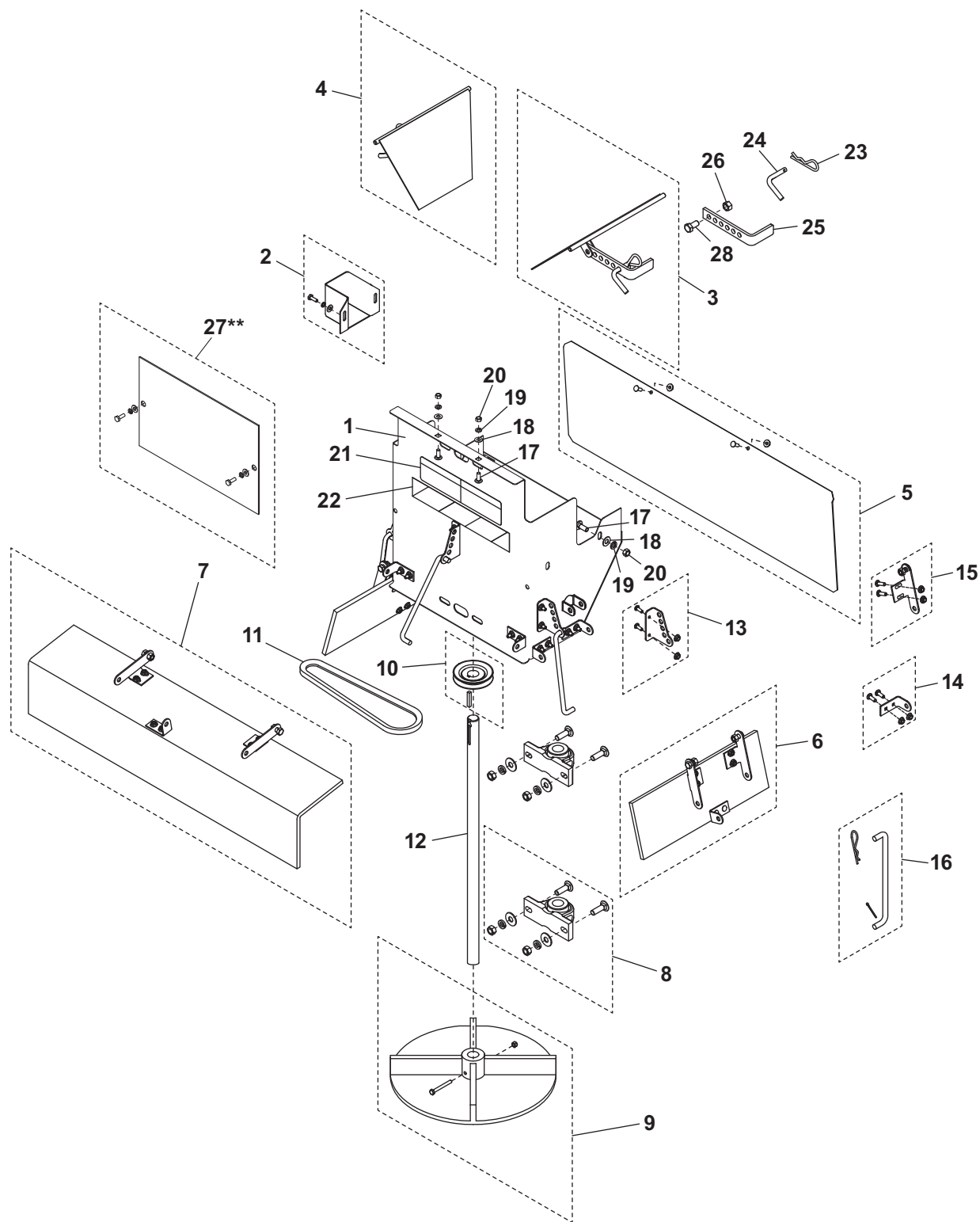




PARTS LIST



This Parts List is for FISHER® PRO-CASTER Hopper Spreaders with serial numbers 0303 and higher.

PRO-CASTER™ Center Belt Drive Chute Assembly Parts List

PRO-CASTER Center Belt Drive Chute Assembly Parts Numbers			
Part	Description	Part	Description
95424	14" Belt Drive MS	95426	26" Belt Drive MS
95425	14" Belt Drive SS	95427	26" Belt Drive SS

PRO-CASTER Center Belt Drive Chute Assembly Parts List							
Item	Part	Qty	Description	Item	Part	Qty	Description
1*		1	Chute Housing	14	94888	9	Baffle Tab Kit
2	95478	1	Output Guard Kit MS	15	95234	6	Hinge Kit, Rear and Side Baffles
	95479	1	Output Guard Kit SS	16	94889	3	Baffle Adjustment Rod Kit
3	95480	1	Internal Baffle Passenger Side Kit MS	17	95569	4	3/8-16 x 1 Carriage Bolt SS
	95481	1	Internal Baffle Passenger Side Kit SS	18	91123	4	3/8" Plain Washer SS
4	95482	1	Internal Baffle Driver Side Kit MS	19	91282	4	3/8" Lock Washer SS
	95483	1	Internal Baffle Driver Side Kit SS	20	91431	4	3/8-16 Hex Nut SS
5	95484	1	Front Deflector Kit MS	21	68595	1	Label – Information (Control)
	95485	1	Front Deflector Kit SS	22	68737	1	Reflective Strip (Red/White)
6	95486	2	Side Deflector Kit	23	91959	5	3/32 x 2-1/4 Hairpin Cotter
7	95487	1	Rear Deflector Kit	24	65206	2	Adjustment Pin
8	95488	2	Bearing Kit, Chute	25	9198	2	Baffle Handle MS
9	94513	1	Spinner Service Kit, 14.5" Poly		20101	2	Baffle Handle SS
10	95489	1	Pulley Kit, Chute	26	67368	2	3/8-16 Hex Jam Locknut SS
11	95418	1	Belt	27**	95505	1	Access Panel Kit MS
12	95420	1	Shaft, 14" Chute		95506	1	Access Panel Kit SS
	95421	1	Shaft, 26" Chute	28	91015	2	3/8-16 x 1 Hex Cap Screw SS
13	94887	3	Adjustment Bracket Kit				

MS = Mild Steel

SS = Stainless Steel

* = Not Available as a Service Item

** = 26" Chutes Only

Copyright © 2013 Douglas Dynamics, LLC. All rights reserved. This material may not be reproduced or copied, in whole or in part, in any printed, mechanical, electronic, film or other distribution and storage media, without the written consent of Fisher Engineering. Authorization to photocopy items for internal or personal use by Fisher Engineering outlets or spreader owner is granted.

Fisher Engineering reserves the right under its product improvement policy to change construction or design details and furnish equipment when so altered without reference to illustrations or specifications used. Fisher Engineering or the vehicle manufacturer may require or recommend optional equipment for spreaders. Do not exceed vehicle ratings with a spreader. Fisher Engineering offers a limited warranty for all spreaders and accessories. See separately printed page for this important information. The following are registered (®) or unregistered (™) trademarks of Douglas Dynamics, LLC: FISHER®, PRO-CASTER™.

Printed in U.S.A.