



Fisher Engineering

77116

50 Gordon Drive, Rockland, Maine 04841-2139 • www.fisherplows.com

December 1, 2023
Lit. No. 31492, Rev. 01

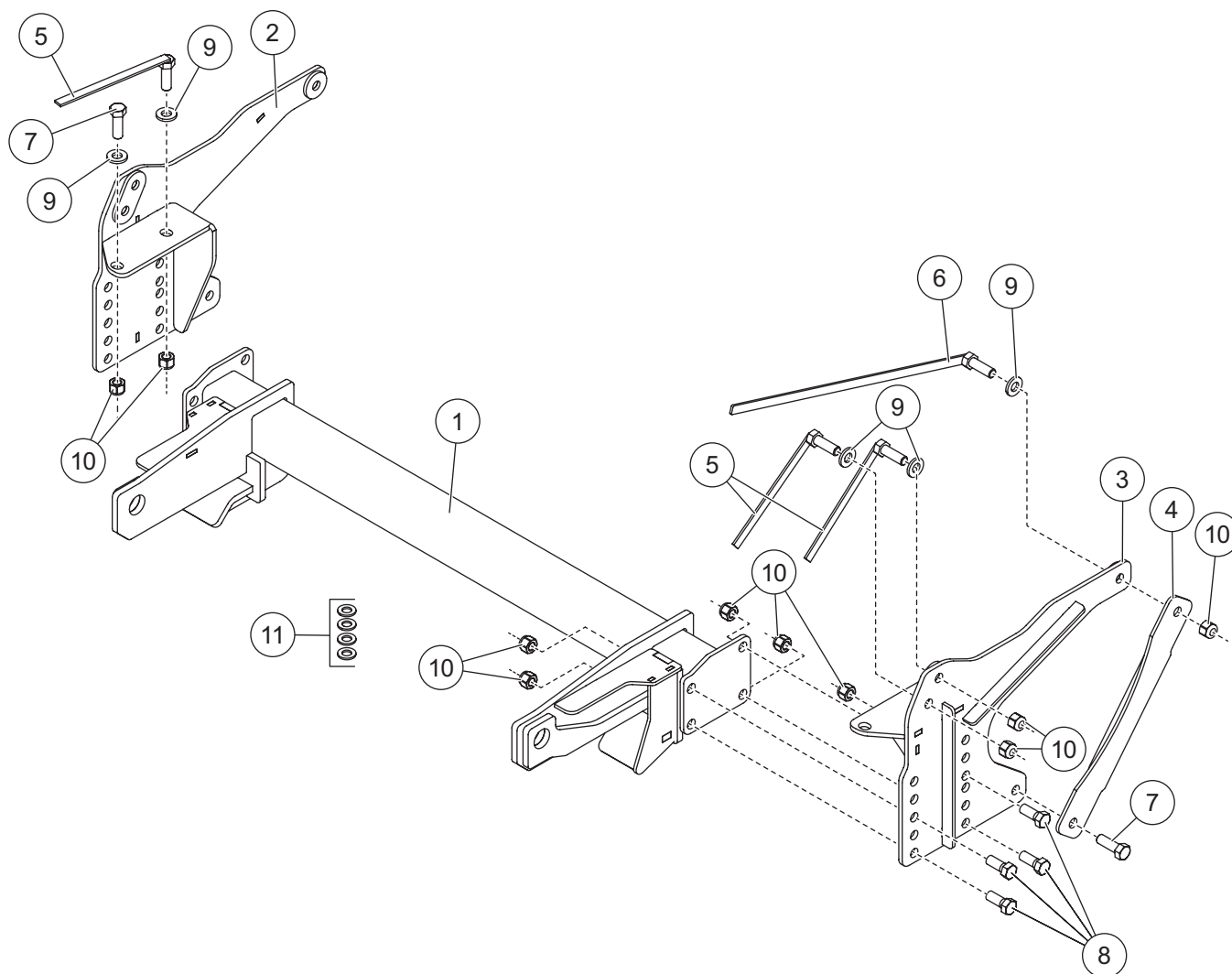
Minute² SYSTEM

MOUNT KIT

Toyota Tundra

2022-__

Parts List



77116 Mount Kit							
Item	Part	Qty	Description	Item	Part	Qty	Description
1	81581	1	Mount Beam	5	28749	6	1/2-13 x 1-1/2 Handled Hex Cap Screw G5, 7"
2	81582	1	Side Plate, PS	6	22314	2	1/2-13 x 1-1/2 Handled Hex Cap Screw G5, 18"
3	81583	1	Side Plate, DS	ns	81585	1	Bolt Bag
4	81586	2	Stiffener Arm				
81585 Bolt Bag							
7		4	1/2-13 x 1-1/2 Hex Cap Screw G5	10		20	1/2-13 Hex Locknut GB
8		8	1/2-13 x 1-1/4 Hex Cap Screw G5	11		4	M12 Flat Washer
9		10	1/2 Hardened Flat Washer Type 1				
ns = not shown				M = Metric		G = Grade	

Copyright © 2023 Douglas Dynamics, LLC. All rights reserved. This material may not be reproduced or copied, in whole or in part, in any printed, mechanical, electronic, film, or other distribution and storage media, without the written consent of Fisher Engineering. Authorization to photocopy items for internal or personal use by Fisher Engineering outlets or snowplow owner is granted.

Fisher Engineering reserves the right under its product improvement policy to change construction or design details and furnish equipment when so altered without reference to illustrations or specifications used. Fisher Engineering or the vehicle manufacturer may require or recommend optional equipment for snow removal. Do not exceed vehicle ratings with a snowplow. Fisher Engineering offers a limited warranty for all snowplows and accessories. See separately printed page for this important information. The following are registered (®) trademarks of Douglas Dynamics, LLC: FISHER®, Minute Mount® 2.

Printed in U.S.A.