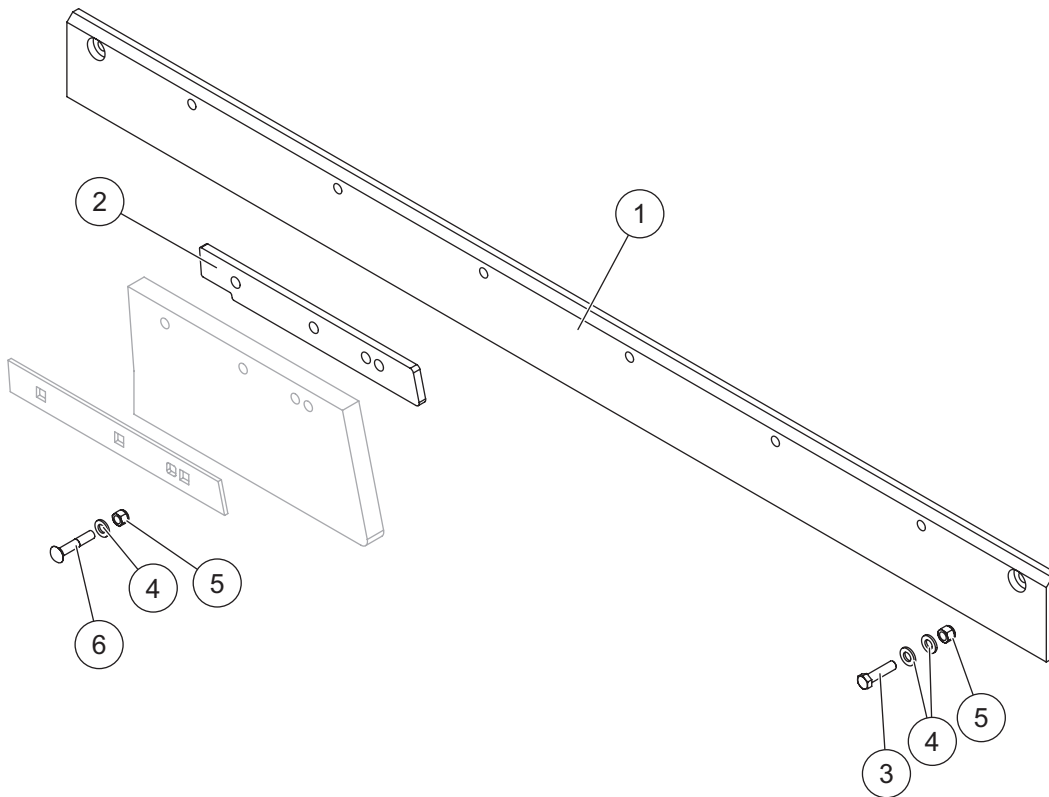




# Poly Cutting Edge Kit

## XRS™ Snowplow

### PARTS LIST



85750 Poly Cutting Edge Kit – XRS							
Item	Part	Qty	Description	Item	Part	Qty	Description
1	88999	1	Poly Cutting Edge – XRS	ns	85775	1	Poly Cutting Edge Hardware Kit – XRS
85775 Poly Cutting Edge Hardware Kit – XRS							
2	88998	2	Wing Spacer – XRS	ns	85705	1	Bolt Bag – Poly Cutting Edge
Item 4 85705 Bolt Bag – Poly Cutting Edge							
3		8	5/8-11 x 2-1/2 Hex Cap Screw G5	5		14	5/8-11 Hex Locknut GB
4		22	5/8 Hardened Flat Washer	6		6	5/8-11 x 3-1/2 Carriage Bolt
ns = not shown				G = Grade			

## INSTALLATION INSTRUCTIONS

### ⚠ WARNING

Do not exceed GVWR or GAWR, including blade and ballast. The rating label is found on the driver-side vehicle door cornerpost.

### ⚠ WARNING

The driver shall keep bystanders clear of the blade when it is being raised, lowered or angled. Do not stand between the vehicle and the blade or within 8 feet of a moving blade. A moving or falling blade could cause personal injury.

### ⚠ WARNING

Blade can drop unexpectedly. Place A-frame on jack stands. Failure to do so could result in serious personal injury.

### ⚠ CAUTION

Read this document before installing the poly cutting edge kit.

### ⚠ CAUTION

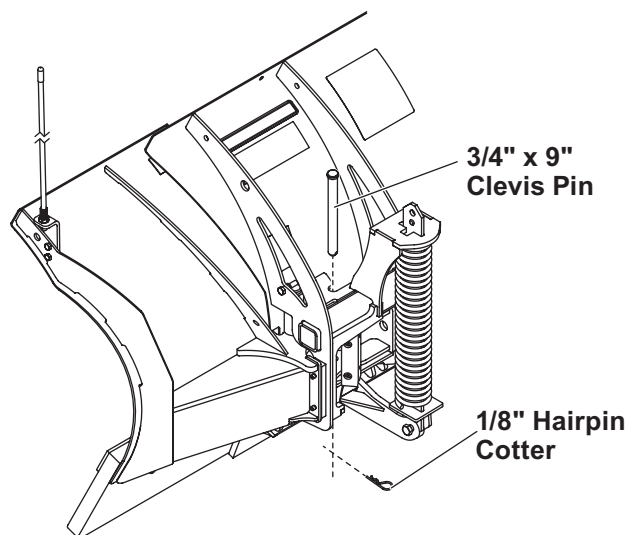
Use standard methods and practices when attaching snowplow and installing accessories, including proper personal protective safety equipment.

### ⚠ CAUTION

See your FISHER® outlet/website for specific vehicle application recommendations before installation. Poly cutting edge weight information may be found in the eMatch selection system.

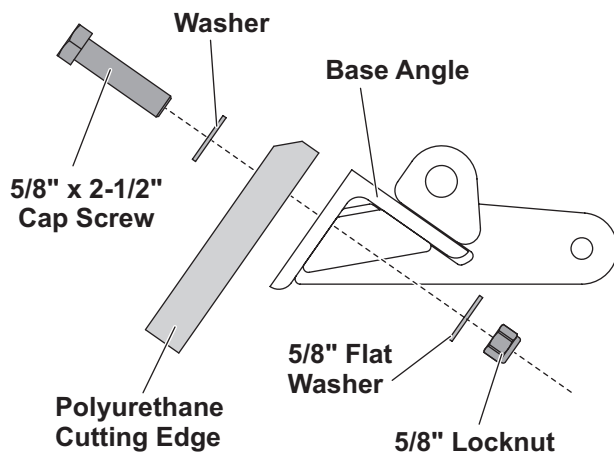
This cutting edge kit fits XRS™ blades for both truck and skid steer applications. These instructions refer to a control for truck installations; skid steer installations use hydraulics to lift and lower the blade.

1. Park the vehicle on a smooth, level, hard surface, such as concrete. Raise the blade.
2. Angle the blade fully to the right, extending and locking the wing in the fully-extended position using a 3/4" x 9" clevis pin and 1/8" hairpin cotter supplied with the off-truck/skid steer mount kit. Repeat, angling the blade all the way to the left and pinning the opposite wing.



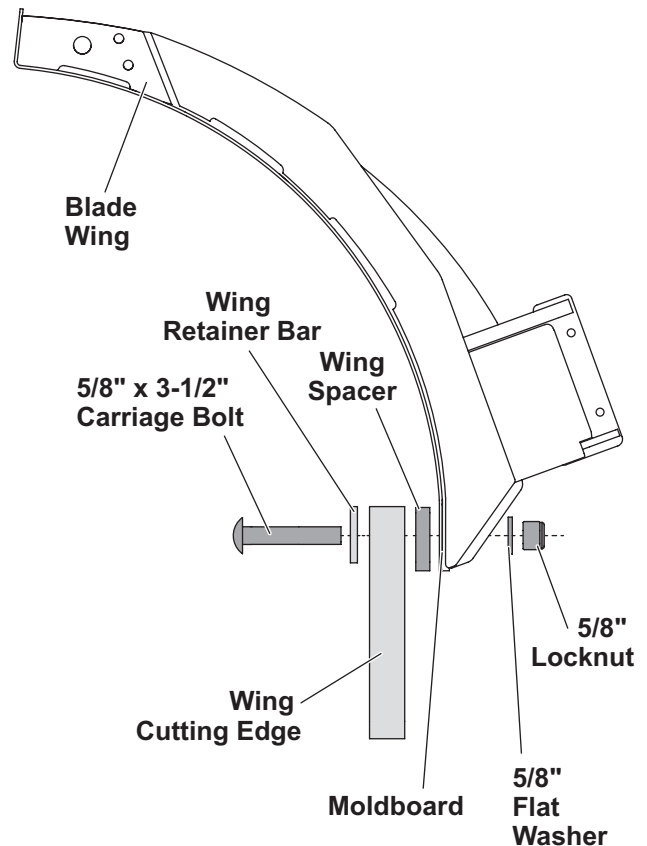
3. Turn the control OFF. From the side of the blade assembly, place a jack stand under the A-frame.
4. Turn the control ON and lower the blade so that the A-frame rests securely on the jack stands. Turn the control OFF. Turn the vehicle ignition to the "OFF" position and remove the key.

5. Remove the existing cutting edges and fasteners from both wings. Set aside the yellow retainer bars and cutting edges for reinstallation, discarding the fasteners.
6. Remove the existing center cutting edge and fasteners from the blade, and discard all.
7. For the center cutting edge of the blade, insert the supplied 5/8" x 2-1/2" cap screws through 5/8" flat washers, poly cutting edge, and base angle. Install a 5/8" flat washer and 5/8" locknut onto each cap screw, and hand-tighten locknuts.



8. Torque locknuts to 50 ft-lb, starting in the center working outward.
9. Gather the wing spacers and hardware supplied in the kit, along with the yellow retainer bars and wing cutting edges removed in Step 5.
10. Beginning on one wing, position a wing spacer between the moldboard and a wing cutting edge. (See the illustration in the following step.) The angle of the wing spacer should match the retainer bar and follow the edge of the wing.

11. Insert three supplied 5/8" x 3-1/2" carriage bolts through a wing retainer bar, into a wing cutting edge, through the supplied wing spacer and the blade wing. Install a 5/8" flat washer and 5/8" locknut onto each carriage bolt and torque locknuts to 50 ft-lb.



12. Repeat Steps 10–11 on the opposite wing and confirm that all hardware is tightened to 50 ft-lb.
13. Turn the vehicle ignition to the "ON" position. Turn the control ON, raise the blade slightly from the jack stands, and fully angle the blade in each direction, removing the wing pins installed in Step 2. Turn the control OFF, and remove the jack stands.
14. Stand 8' clear of the blade, and lower the blade to the ground.
15. Level the A-frame according to the snowplow Installation Instructions or Owner's Manual.

Copyright © 2025 Douglas Dynamics, LLC. All rights reserved. This material may not be reproduced or copied, in whole or in part, in any printed, mechanical, electronic, film, or other distribution and storage media, without the written consent of Fisher Engineering. Authorization to photocopy items for internal or personal use by Fisher Engineering outlets or snowplow owner is granted.

Fisher Engineering reserves the right under its product improvement policy to change construction or design details and furnish equipment when so altered without reference to illustrations or specifications used. Fisher Engineering or the vehicle manufacturer may require or recommend optional equipment for snow removal. Do not exceed vehicle ratings with a snowplow. Fisher Engineering offers a limited warranty for all snowplows and accessories. See separately printed page for this important information. The following are registered (®) or unregistered (™) trademarks of Douglas Dynamics, LLC: FISHER®, XRS™.

**Printed in U.S.A.**