



# basic education

Department:  
Basic Education  
**REPUBLIC OF SOUTH AFRICA**

## **NATIONAL SENIOR CERTIFICATE**

**IBANGA LE-12**

**ISIZULU ULIMI LOKUQALA LOKWENGEZA (FAL)**

**IPHEPHA LOKUQALA (P1)**

**NOVEMBA 2014**

**IMEMORANDAMU**

**AMAMAKI: 80**

**Leli phepha linamakhasi ayisi-7.**

**ISIQEPHU A: ISIVIVINYO SOKUQONDISISA****UMBUZO 1****Ukumakwa Kwesifundo Sokuqondisisa:**

Kulesi sigaba kugxilwe ekutheni umfundi uyakuqonda yini akufundile, ngakho uma sekumakwa abafundi akumele baphucwe amamaki ngamaphutha opelomagama kanye nawo limi.

Emibuzweni evulekile abafundi akumele banikwe amamaki ngempendulo ethi **YEBO** noma **CHA**. Abafundi bayonikwa amamaki ngokusekela kwabo.

Emibuzweni evulekile abafundi akumele banikwe amamaki ngempendulo ethi **IQINISO/AMANGA** noma **IQINISO/UMBONO**. Abafundi bayonikwa amamaki ngokusekela kwabo.

Uma umbuzo udinga ukuphendulwa ngegama elilodwa, umfundi aphenidule ngomusho ophelele kumele anikwe amamaki uma nje igama okuyilona eliyimpendulo lidwetshelwe.

Uma umbuzo udinga ukuphendulwa ngamaphuzu amabili noma amathathu, umfundi yena anikeze angaphezulu. Kufanele kumakwe awokuqala amabili noma amathathu adingekayo.

Uma umfundi esebenzise igama elingolunye ulimi okungelona ahlolwa ngalo kodwa ukusetshenziswa kwalelo gama kungawulahli umqondo womusho, umfundi akangaphucwa imiklomelo. Uma umfundi esebenzise igama lolunye ulimi kodwa lelo gama vele bekumele alisebenzise umfundi kumele angaphucwa amamaki.

Ulimi olwahlukile lwezigodi/lweziFundazwe kumele lwamukelwe/lubhekelelwe nalo.

Emibuzweni okukhethwa kuyona izimpendulo (multiple-choice) kumele kwamukelwe iletha ehambisana nempendulo efanele kuphindwe kwamukelwe nempendulo ebhalwe ngokugcwele.

- 1.1 1.1.1 Amaphuzu AMABILI kwalandelayo:
- Imfundo.
  - Umshado.
  - Impilo engcono.
  - Abantwana. (2)
  - Izikhundla eziphezulu.
- 1.1.2 Ukuthi abasichithi isikhathi esanele nemindeni yabo. (1)
- 1.1.3 Ukuhluleka ukuzibambela mathupha/Ukuhluleka ukuzenzela. (1)
- 1.1.4 Uyamhlonipha/B. (1)
- 1.1.5 Ukukhuluphala **kuyanconywa** kakhulu kulezi zinsuku/kuyatuswa. (1)
- 1.1.6 (a) Sekuntambama/Sekuyahlwa/Seliyoshona. (2)  
(b) Ukuzenzela wena uqobo/ukungathumeli. (2)  
(c) Uyovuka kuqala kunawo wonke umuntu. (2)
- 1.1.7 Izimpendulo ziyokwehluka. Nasi isibonelo somusho ongalindeleka:  
Chitha lolo bisi ngoba selonakele. (2)
- 1.1.8 Kuguga othandayo esikhathini samanje/Kulezi zinsuku akekho ofuna ukubukeka egugile. (2)
- 1.1.9 Amaphuzu AMABILI kwalandelayo:
- Ngabakufuna konke empilweni.
  - Ngabavocavoca imizimba yabo.
  - Abakwazi ukwenza izinto eziningi ngesikhathi esisodwa.
  - Ngabafundile.
  - Ngabanezikhundla eziphezulu emsebenzini.
  - Abangafuni ukuguga.
  - Abalungisa amakhanda, izinzipho, nabangena ezinkundleni zokuxhumana. (2)
- 1.1.10 Amaphuzu AMATHATHU kwalandelayo:
- Ngoba sebethola izikhundla eziphezulu emsebenzini.
  - Ngoba sebekwazi ukuzimela.
  - Ngoba babamba iqhaza elifana nelobaba kwezomnotho.
  - Ngoba bayaqhubeka nemfundo yabo. (3)
- 1.1.11 Umbono. Bangingi obaba ababamba iqhaza ekukhuliseni abantwana babo. (3)

- 1.2 1.2.1 UBona. (1)
- 1.2.2 Iphuzu elilodwa kwalandelayo:
- Ifenisha.
  - Izimpahla zikagesi. (1)
- 1.2.3 Isifo sikashukela/C. (1)
- 1.2.4 Iphuzu elilodwa kwalandelayo:
- Izinwele zokufakelwa.
  - Amashiya acwecwiwe.
  - Ubuhlalu/Umgexo. (1)
  - Ugcobe umlomo.
  - Ufake amacici esimanje.
  - Indlela agqoke ngayo.
- 1.2.5 Kungabalungiselela ngezinsalelo abazobhekana nazo uma sebefika eNyuvesi/kungabagqugquzela ukuthi baphase ibanga le-12. (2)

**AMAMAKI ESIQEPHU A: 30**

**ISIQEPHU B: UKUFINGQA****UMBUZO 2****Ukufingqa kumele kumakwe ngale ndlela:****Ukwabiwa Kwamamaki:**

- Amaphuzu ayisi-7- Amamaki ayisi-7.
- Ulimi- Amamaki ama-3.

Amamaki Esewonke: [10]

Ukwabiwa kwamamaki uma abafundi bengacaphunile okusesiqeshini:

- Iphuzu eli-1 kuya kwama-3: imaki eli-1
- Amaphuzu ama-4 kuya kwama-5: amamaki ama-2
- Amaphuzu ayisi-6 kuya kwayisi-7: amamaki ama-3

**Ukubalwa Kwamagama:**

- Abamakayo kulindeleke ukuthi babale inani lamagama asetshenzisiwe.
- Awekho amamaki asuswayo uma umfundi engalibhalanga inani lamagama asetshenzisiwe noma elibhalile kodwa kungesilona.
- Uma inani lamagama asetshenzisiwe leqiwe, omakayo kumele afunde amagama amahlanu ngaphezu kwesibalo esinqunyiwe angabe esakunaka okunye okuza emva kwalokho. Indaba efingqwe ngamagama angaphansi kwenani elibekelwe ibe inawo wonke amaphuzu abalulekile ayiphucwa amamaki.

<b>Nanka Amaphuzu Abafundi Bafingqele Phezu Kwawo:</b>	
1.	Umfundi kumele ahlele ngendlela efanele umsebenzi wonyaka wonke.
2.	Kubalulekile ukuthi umfundi azakhele uhlelo lwakhe lokutadisha ukuze abele zonke izifundo isikhathi esanele.
3.	Kuyasiza ukuthi abafundi basebenze ngamaqembu.
4.	Kubalulekile nokuthi abafundi babheke amaphepha eminyaka edlule ukuze babone indlela imibuzo engase ibuzwe ngayo.
5.	Umfundi kumele adle ngendlela enempilo uma ebhala izivivinyo.
6.	Umfundi obhala ukuhlolwa kokuphela konyaka kumele anciphise isikhathi asichitha kumabonakude, umakhalekhukhwini kanye nabangani
7.	Kuhle ukuthi umuntu avocavoce umzimba ukuze angakhathali.

**AMAMAKI ESIQEPHU B: 10**

**ISIQEPHU C: UHLELO NOKUSETSHENZISWA KOLIMI****UMBUZO 3**

- 3.1 Izinto EZIMBILI kwezilandelayo:
- Amakamelo amakhulu okulala.
  - Ikhishi.
  - Indlu yokuphumula. (2)
- 3.2 Phuthuma/Ungaphuthelwa. (1)
- 3.3 Umuntu ohlala emzini awukhokhelayo kube kungewona owakhe/umuntu oqashile. (2)
- 3.4 Olukhohlisayo/A. (1)
- 3.5 Ukuheha abathengi/ukugqamisa okukhangiswayo/ukukhombisa ukuthi yini ekhangiswayo. (2)
- 3.6 Ngoba akayidingi impendulo/ngoba uzama ukukhumbuza abathengi into vele abayaziyo. (2)
- [10]**

**UMBUZO 4**

- 4.1 Ukubhala izivivinyo/ukuhlolwa. (1)
- 4.2 Akakulungele ukubhala izivivinyo/akafundisisanga. (1)
- 4.3 Ngiyazi baba angifundisisanga, kodwa ngiyakudinga ukuphasa. (1)
- 4.4 Uyamhleka/D. (1)
- 4.5 Udadewethu/Usisi. (1)
- 4.6 Uyathandaza/Uyakhuleka/Uyacela kuBaba ukuphasa. (1)
- 4.7 Izimpendulo zingathinta amaphuzu alandelayo:
- Uhlobo lwesikole: (Esabafana namantombaza ne[co-educational] esabantu abaMnyama kuphela, esabadala.
  - Indlela abafundi abagqoke ngayo.
  - Ukuziphatha kwabafundi.
  - Udonga amadeski. (2)
- 4.8 Izimpendulo ziyokwehluka. Abafundi kumele besekele izimpendulo zabo:
- Cha, ngoba umuntu uphasa uma efundisisile umsebenzi wakhe.
  - Yebo, ngoba ukuthandaza kuyakunika ithemba lokuthi ungaphasa. (2)
- [10]**

**UMBUZO 5**

- 5.1 5.1.1 **Akuvamisile/Akuvamanga** ukuthi uma umuntu ebanjwe entshontsha **angaphiki**. (2)
- 5.1.2 Nina enimbonile nisala nisenkingeni/nisezinkingeni. (2)
- 5.1.3 Izimpendulo ziyokwehluka. Nasi isibonelo somqondo olindelekile emushweni:  
Isokisi likaSanele akumele ukuthi ngabe usaligqoka ngoba linezambane elikhulu. (2)
- 5.1.4 Ukuqamba amanga/A. (1)
- 5.1.5 Umuntu ontshontshile kumele ajeziswe **ngoba** uphula umthetho. (1)
- 5.1.6 Ngaleyo **ndledlana** kugcina sekudaleke amacala amaningi/ndlelana (2)
- 5.1.7 **Uzozwa** ngokukhuluma ukuthi **uzoqamba** amanga. (2)
- 5.1.8 Uzwa ngokukhuluma abe namalimi sengathi udla izambane elishisayo ukuthi usephelile uvalo. (2)
- 5.2 5.2.1 Imizwa yokujabula/yokuhlabana/yokunqoba/yempumelelo. (1)
- 5.2.2 Abaphansi banami/Ngadla mina kababa! (1)
- 5.2.3 Ulimi lokwedelela/lokweyisa/lukuchwensa/lokubukela phansi. (2)
- 5.2.4 Kungcono ukuba nezingane zamantombazane ngoba uthola imali noma izinkomo uma zilotsholwa/abafana bayizindleko. (2)

**[20]**

**AMAMAKI ESIQEPHU C: 40**  
**AMAMAKI ESEWONKE: 80**



# basic education

Department:  
Basic Education  
**REPUBLIC OF SOUTH AFRICA**

## **NATIONAL SENIOR CERTIFICATE**

**IBANGA LE-12**

**ISIZULU ULIMI LOKUQALA LOKWENGEZA (FAL)**

**IPHEPHA LOKUQALA (P1)**

**NOVEMBA 2014**

**AMAMAKI: 80**

**ISIKHATHI: amahora ama-2.**

**Leli phepha linamakhasi ayi-13.**

**IMIYALELO KWABAHLOLWAYO**

1. Leli phepha lehlukaniwe IZIQEPHU EZINTATHU:

ISIQEPHU A: Isivivinyo sokuqondisisa	(30)
ISIQEPHU B: Ukufingqa	(10)
ISIQEPHU C: Uhlelo nokusetshenziswa kolimi	(40)

2. Fundisisa YONKE imiyalelo ngaphambi kokuba uphendule imibuzo.

3. Phendula YONKE imibuzo ekuleli phepha.

4. Qala isiqephu NGASINYE ekhasini ELISHA bese udweba umugqa emva kwaleso siqephu.

5. Bhala izinombolo zezimpendulo njengoba zibhalwe emibuzweni.

6. Shiya umugqa emva kombuzo ngamunye.

7. Bhala ngobunono nangesandla esifundekayo.

8. Qaphela upelomagama kanye nokwakheka kwemisho.

9. Ungahlukanisa isikhathi obhala ngaso ngokwalezi ziqephu:

ISIQEPHU A: Imizuzu engama-50
ISIQEPHU B: Imizuzu engama-30
ISIQEPHU C: Imizuzu engama-40

**ISIQEPHU A: ISIVIVINYO SOKUQONDISISA****UMBUZO 1**

1.1 Fundisisa lesi siqephu esingezansi bese uphendula imibuzo ezolandela.

**ABESIFAZANE ABAKUFUNA KONKE**

Abesifazane bamanje bakufuna konke, imfundo, umshado, impilo engcono, abantwana nezikhundla eziphezulu emisebenzini. Kunzima ukukuthola konke. Abantu besifazane abakufuna konke bavame ukuphila nonembeza (conscience) wokuthi abenzi ubulungiswa/kahle emindenini yabo ngenxa yokungakwazi ukuchitha isikhathi nomndeni. Ukwethembela kubaba wekhaya ukuthi kube nguyena okhokhela zonke izidingo zekhaya sekuphelelwe isikhathi. Ukubambisana ekukhokheni izindleko zekhaya kwenza imindeni eminingi iphumelele. Ngaphandle kwengcindezi (pressure) elethwa ukubiza kwezinto, abesifazane banenye ingcindezi yokukhombisa lonke izwe ukuthi uHulumeni wentando yeningi akenzanga iphutha ngamathuba abanike wona.

UMaMkhize Sithole omunye womama abakufuna konke noma engumama wesimanje owaziyo amalungelo akhe, ukhetha ukubizwa ngoMaMkhize. Umyeni wakhe umbiza ngobaba hhayi ngobaby njengoba kujwayelekile kubashadikazi besimanje. Lokhu kuhloniphana phakathi kwakhe nomyeni wakhe kuyamsiza ukuthi intuthuko nempumelelo yakhe ingamenzi akhohlwe yizinto ezibalulekile empilweni yomuntu. Lezi izinto ezifana nenhlonipho, umndeni kanye nokuthobeka.

Abesifazane babhekene nezinsalelo (challenges) ezibadinga bephila emzimbeni, emqondweni kanye nasemphefumulweni. Akulula ukuthi umuntu ahlale esesimweni esihle ngalolu hlobo, kumele kube nemizamo ayenzayo ukuzigcina ephila kahle. Yingakho iningi lomama besimanje liqala usuku lwalo ngehora lesine ekuseni. Kuyavukwa kuyiwe ejimini. Ukuvocavoca umzimba kubalulekile. Ngaphandle kokuthi wonke umuntu ufuna ukuba mncane ngomzimba, ukuzivocavoca kusiza kakhulu ukwehlisa ingcindezi komama abaningi abaphila nayo ngenxa yokubhekana nezinto eziningi okumele zenziwe, futhi zenziwe kahle. Ukukhuluphala kuyagxekwa kakhulu kulezi zinsuku ngoba kuletha izifo eziningi emzimbeni. Kuphinde kwenze umuntu abukeke emdala kuneminyaka yakhe kanti kulezi zinsuku akekho ofuna ukubukeka egugile. Kuguga othandayo esikhathini samanje.

Abantu abaningi basuka ejimini baye emsebenzini. Abanye baqale emakhaya sebeyothatha abantwana beyiswa esikoleni. Ukulungiselela abantwana ukuya esikoleni kujwayelekile ukuthi kube ngumsebenzi ka-anti osizayo. Uma ungowesifazane okufuna konke kumele ube nabantu abazokusiza bafike lapho wena ongakwazi ukufika khona. Akufanele futhi uzisole ngokungakwazi **ukuzibambela wena mathupha**. Alikho iphutha ekwethembeleni kwabanye abantu ukuthi bakusize. Nabesilisa baphumelela kanjalo, abanqeni/abavilaphi ukuthumela.

Umama uphuthuma emsebenzini ngemuva kokubeka abantwana esikoleni. Emsebenzini ulindeleke ukuthi azibonakalise ukuthi isikhundla asiphethe usifanele ngempela. Kugadwe iphutha elincane nje angalenza bese kuba indaba enkulu. Uma **seliyozilahla kunina**, umama uphuthuma ukulanda abantwana esikoleni. Phela abantwana bamanje abasakwazi ukuhamba ngezinyawo. Baya lethwa baphinde balandwe esikoleni noma ngabe ibanga lifishane kangakanani, kodwa bona balinda ukulandwa. Ziningi izizathu ezenza ukuthi abantwana bangazihambeli ngezinyawo. Esinye sazo ukwenyuka kwezinga lobugebengu. Izingane ziyantshontshwa. Ngakho-ke abazali bayaqiniseka ukuthi abantwana babo babagadile ngaso sonke isikhathi. Lapho kufikwa ekhaya kwenziwa umsebenzi wabantwana wesikole. Lesi yisona isikhathi umama akwazi ukusichitha nabantwana bakhe uma singasibali asichitha nabo emotweni kuyiwa noma kubuywa esikoleni.

Ngemuva kwalokho kudliwa isidlo sakusihlwa. Abantwana bayalala umama usefunda umsebenzi wakhe wokuzithukisa. Isimo siyamenza ukuthi azithukise ukuze alungele amathuba avulelekele abesifazane. Ngaphambi kokuthi aqale afunde kumele avule ama-imeyili angakwazanga ukuwafunda emsebenzini. Usuku lwakhe luphela phakathi kwamabili, nasekuseni **ukusa kuyobonwa nguye** esephuthuma ejimini. Asikho ngisho esabangani isikhathi, uma engathintananga nabo ezinkundleni zokuxhumana nesikhathi sazo esingekho kahle, ubungani bungagcina buphele nya. Liphele kanjalo isonto. NgoMgqibelo ilanga lokulungisa ikhanda, izinziphokuthenga ukudla nezidingo zabantwana. NgeSonto kuyiwa esontweni. Kanti kuphunywulwa nini?

[Own source]

- 1.1.1 Bhala izinto EZIMBILI ezifunwa ngabesifazane abakufuna konke ngokwale ndaba. (2)
- 1.1.2 Yikuphi okubaphatha kabi abesifazane okukhulunywa ngabo lapha endabeni? (1)
- 1.1.3 Yikuphi abesifazane abakufuna konke abahluleka ukuzenzela khona? (1)
- 1.1.4 Khetha impendulo efanele kwezilandelayo:  
UMaMkhize umbiza ngobaba umyeni wakhe ngoba:  
A Ungubaba wezingane zakhe.  
B Uyamhlonipha.  
C Inkosikazi akumele ibize umyeni wayo ngobaby.  
D Umyeni wakhe akasazi isiNgisi. (1)
- 1.1.5 Bhala elakho igama elimqondo ophikisana (opposite) nelibhalwe ngokugqamile kulo musho olandelayo:  
Ukukhuluphala **kuyagxekwa** kakhulu kulezi zinsuku. (1)

- 1.1.6 Chaza lezi zimo zokukhuluma ezibhalwe ngokugqamile njengoba zisetshenzisiwe endabeni:
- (a) Uma **seliyozilahla kunina**, umama uphuthuma ukulanda abantwana esikoleni. (2)
  - (b) Ungazisoli ngokungakwazi **ukuzibambela wena mathupha**. (2)
  - (c) Nasekuseni **ukusa kuyobonwa nguyeye** esephuthuma ejimini. (2)
- 1.1.7 Emushweni ozakhele wona sebenzisa igama '**chitha**' liveze umqondo ohlukile kunalona ovele kulo musho olandelayo:
- Lesi ukuphela kwesikhathi umama akwazi **ukusichitha** nabantwana bakhe. (2)
- 1.1.8 Endabeni oyifunde ngenhla caphuna umusho osho okufanayo nalo olandelayo:
- Esikhathini samanje ungakwazi ukuzenza ukuthi ungabonakali ukuthi uneminyaka emingaki. (2)
- 1.1.9 Ngokwale ndaba ngabanjani omama esingababiza ngokuthi abesimanje? Bhala amaphuzu AMABILI. (2)
- 1.1.10 Inkululeko yabakhulula abesifazane. Sekela lesi sitatimende ngamaphuzu AMATHATHU atholakala endabeni. (3)
- 1.1.11 Ngabe iqiniso noma umbono ukuthi omama yibona kuphela ababamba iqhaza ekukhuliseni abantwana babo. Sekela impendulo yakho ngamaphuzu AMATHATHU. (3)

## 1.2 Bukisisa lesi sithombe bese uphendula imibuzo ezolandela:



[Sicashunwe ku-Bona Magazine-2008]

- 1.2.1 Bhala igama le phephabhuku elingenhla. (1)
- 1.2.2 Umfundi waleli phephabhuku angawinani? Bhala okukodwa. (1)
- 1.2.3 Gcwalisa isikhala ngamagama afanele emushweni olandelayo:  
Ngokwaleli phephabhuku ... singumbulali othule. (1)
- 1.2.4 Bhala iphuzu elilodwa elifakazela ukuthi le ntokazi evezwe esithombeni iphila esikhathini samanje. (1)
- 1.2.5 Isihloko esithi: 'Ukuba SeNyuvesi' kungabasiza kanjani abafundi bebanga le-12? (2)

AMAMAKI ESIQEPHU A: 30

**ISIQEPHU B: UKUFINGQA****UMBUZO 2**

Fundisisa lesi siqeshana esingezansi esikhuluma ngezindlela zokulungiselela ukubhala izivivinyo zokuphela konyaka bese usifingqa ngamaphuzu ayi-7.

**IMIYALELO:**

1. Bhala amaphuzu ayi-7 ngemisho ephelele. Amagama akho abe phakathi kwangama-50 kuya kwangama-60.
2. Imisho yakho mayibe nezinombolo kusukela ku-1 kuya ku-7.
3. Bhala iphuzu elilodwa kumusho ngamunye.
4. Sebenzisa amagama akho emishweni.
5. Ekugcineni kwamaphuzu onke owabhalile bhala inani lamagama owasebenzisile.

**IZINDLELA ZOKUZILUNGISELELA IZIVIVINYO ZOKUPHELA KONYAKA**

Isikhathi sokubhala izivivinyo zokuphela konyaka siletha uvalo/ukwesaba kubafundi abaningi. Abanye bafisa nokuthi kuhlehle ngoba basuke bengakazilungiselele kahle ukuqala ukubhala. Kubalulekile ukuhlela kusenesikhathi ukuze uphumelele. Nazi izindlela ongazilandela ukulungiselela ukubhala:

Kufanele uma ungumfundi uqoqe zonke izincwadi, amanothi kanye nemisebenzi ebeyenziwa ekilasini phakathi nonyaka. Lokhu kuyasiza ukubona ukuthi yikuphi ongenakho bese ucela kothisha kanye nakwabanye abafundi ukopishe kusenesikhathi. Umfundi kufanele abukisise uhlelo olunezifundo, izinsuku nezikhathi zokubhala (time table) ngesikhathi belunikwa esikoleni. Emva kokuthola uhlelo lokubhala esikoleni umfundi usengazakhela olwakhe lokutadisha ukuze abhalansise isikhathi asinika izifundo azozibhala. Lolu hlelo angalunamathisela endaweni esobala ekhaya.

Ukuhlangana ningamaqembu bese nixoxa ngezifundo nabanye abafundi kuyasiza kodwa akusho ukuthi umfundi usengagcina ngalokho. Kufanele uma eseyedwa ekhaya aphinde afunde asebenzise nolwazi aluthole kulabo afunda nabo. Amaphepha okuhlolwa eminyaka edlule ayasiza ukubona indlela imibuzo engabuzwa ngayo. Ngale ndlela, umfundi uthola nolwazi abengalutholanga kuthisha wakhe.

Ngesikhathi sokuhlolwa kubalulekile ukuthi umfundi adle ukudla okunomsoco esikhundleni sezibiliboco. Lokhu kwenza umqondo womfundi usebenze kahle futhi angahlaselwa izifo ezihambisana nokuba ngaphansi kwengcindezi (stress). Kubalulekile ukuphuza amanzi amaningi esikhundleni seziphuza ezinoshukela. Kujwayelekile ukuthi abafundi ngalesi sikhathi baphuze amaphilisi nemithi eyenza ukuba bangalali. Lokhu akulungile ngoba kufanele umfundi alale kahle ukuze nomqondo wakhe uphumule. Ukufunda kuze kuse akulungile ngoba kungenza ukuthi umfundi alale ngesikhathi sokubhala/sokuhlolwa.

Izinto ezifana nomabonakude, amaselula, ukuzula nokuvakasha kuyawuphazamisa umqondo womfundi. Ukuzivocavoca kungenye yezindlela ezenza umzimba nomqondo ungakhathali. Indlela eya empumelelweni ifuna usebenze ngokuzinikela nangokuzimisela.

[Own source]

**AMAMAKI ESIQEPHU B: 10**

**ISIQEPHU C: UHLELO NOKUSETSHENZISWA KOLIMI**

**UMBUZO 3**

Bukisisa lesi sikhangisi bese uphendula imibuzo ezolandela:

**IZINDLU!**

**IZINDLU!**

**IZINDLU!**

# **THOLI' IKHAYA HOMES**

**ZICOSHWA PHANSI IZINDLU EMTHUNZINI!**

Usukhathele ukurenta?  
Uholo imali engaphezu kwezinkulungwane ezi-R5 500.00 ngenyanga?

Woza kwaThol' Ikhaya uzozitholela elakho ikhaya!

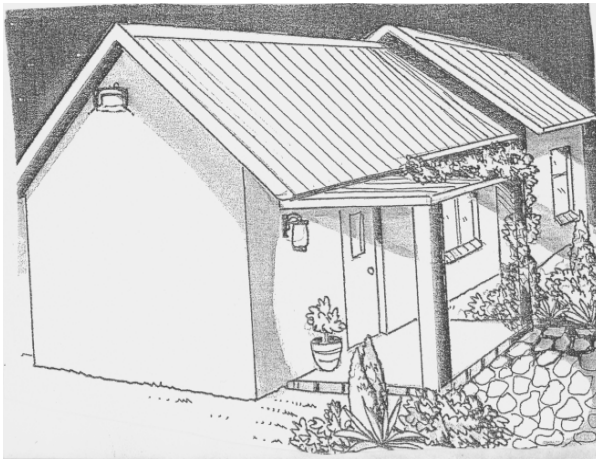
**ETHOL' IKHAYA HOMES SAKHA IZINDLU:**

Ezinamakelo ama-2 amakhulu okulala, ikhishi nendlu yokuphumula.  
Zisukela ezinkulungwaneni ezi-R200 000.

Ziseduze nezikole nenxanxathela yezitolo.

Izinto zokuhamba zitholakala kalula.

**PHUTHUMA! PHUTHUMA! PHUTHUMA! UNGAPHUTHELWA!**



**Sithinte:  
87 Solo Road  
Mthunzini  
083 876 8696  
032 392 8729**

**[tholkhaya@gmail.com](mailto:tholkhaya@gmail.com)**

Imithetho Nemibandela  
Asibadayiseli abanamagama amabi ebhange.

[Isithombe sicashunwe ku-[www.googlepicture.com](http://www.googlepicture.com)]

- 3.1 Bhala izinto EZIMBILI ezitholakala kulezi zindlu. (2)
- 3.2 Esikhangisweni esingenhla caphuna igama elisho okufanayo nelithi **shesha**. (1)
- 3.3 Ngumuntu onjani orentayo? (2)
- 3.4 Khetha impendulo efanele kulezi ezilandelayo:  
Umusho othi: 'Zicoshwa phansi izindlu eMthunzini!' uqukethe ulimi:  
A Olukhohlisayo.  
B Oluncengayo.  
C Olubandlululayo.  
D Olukhombisa indelelo. (1)
- 3.5 Sitshenzisweleni isithombe sendlu kulesi sikhangisi? (2)
- 3.6 Kungani kusetshenziswe lo mbuzombumbulu kulesi sikhangisi?  
Uhola imali engaphezu kwezinkulungwane ezi-R5 500.00 ngenyanga? (2)

**[10]****UMBUZO 4**

Bukisisa le khathuni bese uphendula imibuzo ezolandela:



[Sicashunwe kwiSolezwe - 2013]

- 4.1 Balindele ukwenzani laba abasesithombeni? (1)
- 4.2 Iyphi inkinga ebhekene nalo wesifazane? (1)

- 4.3 Lungisa upelomagama kulo musho olandelayo:  
Ngiyazi baba angifundisisanga, kodwa ng'yakudinga uk'phasa. (1)
- 4.4 Khetha impendulo efanele kwezilandelayo:  
Kule khathuni engenhla owesilisa ... lo wesifazane:  
A Uyamzwela.  
B Uyamthanda.  
C Uyamzonda.  
D Uyamhleka. (1)
- 4.5 Bhala igama '**sistaz**' ngolimi olwejwayelekile. (1)
- 4.6 Kungani lo wesifazane ehlanganise izandla? (1)
- 4.7 Luhlobo luni lwesikole esifunda laba ababili abasesithombeni? (2)
- 4.8 Ngokucabanga kwakho ngabe ukuthandaza kuyamsiza yini umfundi ongazilungiselele? Sekela impendulo yakho. (2)
- [10]**

**UMBUZO 5**

- 5.1 Funda lesi siqeshana esilandelayo bese uphendula imibuzo ezolandela:

Kuvamisile ukuthi uma umuntu ebanjwe entshontsha aphike. Ungaze ufunge uthi uyasukelwa. Wena ombonile ugcina ufana nomuntu osenga ezimithiyo. Uzwa ngokukhuluma abe namalimi sengathi udla izambane elishisayo ukuthi usephelile uvalo. Uma uthi uyambuka uface ubuso bakhe sebumnyama bhuqe. Ungafunga ukuthi uyasukelwa kanti usedliwa unembeza.

Wena ombonile entshontsha ungagcina usungena ejele asale yena. Phela amasela angamaqili okuqala nawokugcina. Kumele nakanjani iqine ingalo yomthetho uma umuntu entshontshile, ajeze ngalokho. Ukungaqini kwengalo yomthetho kungaholela ekutheni abantu bazithathele umthetho bawubeke ezandleni zabo. Ngaleyo ndlela kugcina sekudaleka amanye amacala angenasidingo.

- 5.1.1 Phinda ubhale umusho olandelayo ukhomba ukuphika:  
Kuvamisile ukuthi uma umuntu ebanjwe entshontsha aphike. (2)
- 5.1.2 Phinda ubhale umusho olandelayo ukhomba ubuningi:  
Wena ombonile usala usenkingeni. (2)
- 5.1.3 Yakha umusho usebenzise igama elibhalwe ngokugqamile liveze umqondo ohlukile kunalo osesiqeshini.  
Umuntu ontshontshile ukhuluma sengathi udla **izambane** elishisayo. (2)

5.1.4 Khetha impendulo efanele kwezilandelayo:

Ukusenga ezimithiyo kusho:

A Ukuqamba amanga.

B Ukucasuka.

C Ukubaleka.

D Ukukhuluma kakhulu. (1)

5.1.5 Khetha isihlanganiso esifanele kubakaki ukuhlanganisa imisho elandelayo:

(uma, ngoba, futhi)

Umuntu ontshontshile kumele ajeziswe. Umuntu uphula umthetho. (1)

5.1.6 Nciphisa igama elibhalwe ngokugqamile emshweni olandelayo:

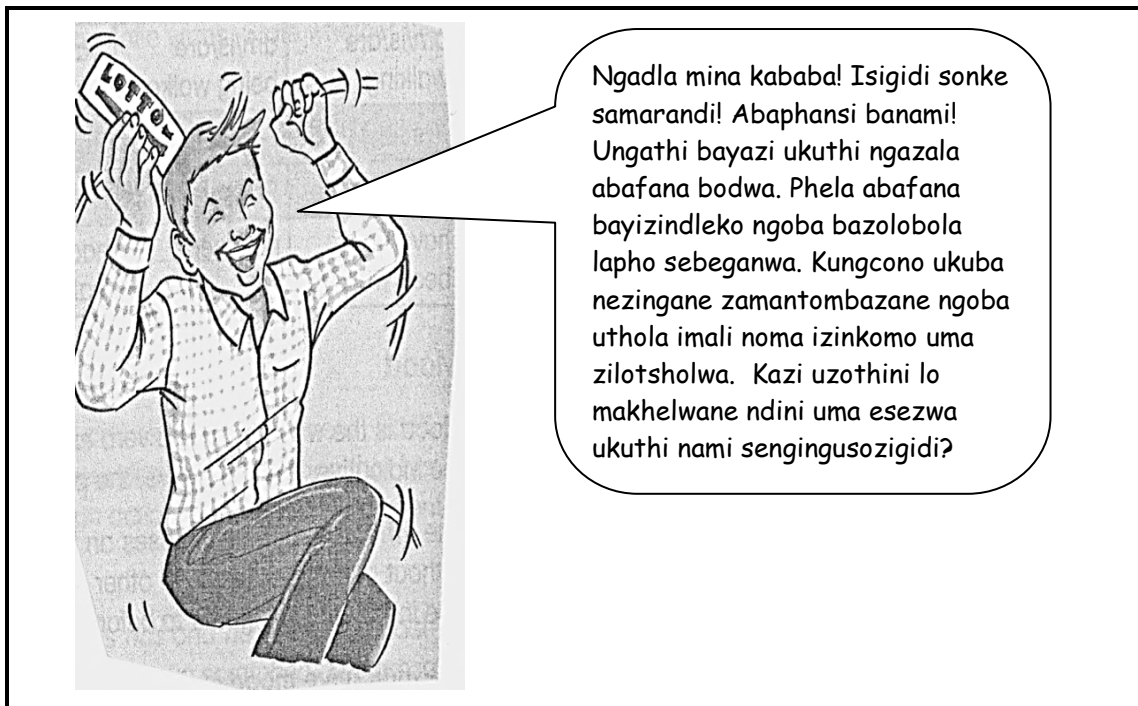
Ngaleyo **ndlela** kugcina sekudaleka amanye amacala angenasidingo (2)

5.1.7 Bhala umusho olandelayo ube senkathini ezayo:

Uzwa ngokukhuluma ukuthi uqamba amanga. (2)

5.1.8 Tomula umusho oqukethe isifaniso kulesi siqeshana esingenhla. (2)

5.2 Buka isithombe esilandelayo bese uphendula imibuzo ezolandela:



Sicashunwe ku-[www.googlepictures.com](http://www.googlepictures.com)

- 5.2.1 Ibinzana 'Ngadla mina kababa!' liqukethe/livusa miphil imizwa? (1)
- 5.2.2 Kulesi siqeshana esingenhla caphuna ibinzana elisho okufanayo nokuthi 'ngehlelwe inhlanhla enkulu'. (1)
- 5.2.3 Kulo musho olandelayo la magama abhalwe ngokugqamile akhombisa luphi uhlobo lolimi?  
Kazi uzothini lo makhelwane ndini uma esezwa ukuthi nami sengingusozigidi? (2)
- 5.2.4 Tomula umusho oqukethe inkolelo engaguquki kule nkulamo engenhla. (2)

**[20]****AMAMAKI ESIQEPHU C: 40**  
**AMAMAKI ESEWONKE: 80**



# basic education

Department:  
Basic Education  
REPUBLIC OF SOUTH AFRICA

## NATIONAL SENIOR CERTIFICATE

IBANGA LE-12

ISIZULU ULIMI LOKUQALA LOKWENGEZA (FAL)

IPHEPHA LESIBILI (P2)

NOVEMBA 2014

IMEMORANDAMU

AMAMAKI: 70

Le memorandamu inamakhasi ayi-15.

## ISIQEPHU A: INOVELI

### ***KUSINDA KWEHLELA ENDODENI – SJ Mchunu***

#### **UMBUZO 1**

- 1.1 Owokujabulela ukuwina kukaManyoba ilotheno. (1)
- 1.2 UMfundisi uZakwe/uMfundisi. (1)
- 1.3 Ngehora leshumi ekuseni/ngehora le-10. (1)
- 1.4 UMalaki. (1)
- 1.5 Ezine/A. (1)
- 1.6 Amaphuzu AMATHATHU kwalandelayo:
- Wasebenza isithupha, epulazini.
  - Wasebenza ezimayini eGoli.
  - Wasebenza efemini khona eGoli.
  - Wasebenza edeli, eGreytown. (3)
- 1.7
- 1.7.1 Izingubo zokugqoka ezinhle kakhulu. (2)
- 1.7.2 Kwangenwa ohlelweni lomcimbi/kwaqalwa uhlelo lomcimbi/kwalandelwa okubhalwe phansi ohlelweni ngaphandle kokugudluka. (2)
- 1.7.3 Ukungabi namandla okuzondla/okubhekana nezidingo zempilo. (2)
- 1.8 Amaphuzu AMATHATHU kwalandelayo:
- Wasebenza wabeka imali walobola washada.
  - Wathola abantwana wabondla bangeswela.
  - Wafundisa izingane zakhe zabafana.
  - Wazilobolela amakhosikazi.
  - Wamphatha kahle unkosikazi wakhe kwaze kwaba sekugcineni.
  - Akazange abhunguke ngesikhathi esebenza eGoli kanti kwakuvamile ukuthi amadoda abhunguke akhohlwe ngamakhosikazi awashiye emakhaya.
  - Wayeyindoda emesabayo uNkulunkulu kwakuthandazwa kwakhe ngaphambi kokuba kulalwe. (3)
- 1.9 Nanka amaphuzu abangabhalela phezu kwawo:
- Wayephatheke kabi, wayeke alale engadlile.
  - Babemshiya uma beyodla ehhotela.
  - Wayengawashelwa, anga-ayinelwa. (2)

- 1.10 Amaphuzu AMABILI kwalandelayo:
- Bajabulelana, babambana bangana.
  - Bakhala becabanga ngosizi abebephila ngaphansi kwalo.
  - Bavumelana ngokuthi kebahambe baye edolobheni babuke ukuthi selaba njani.
  - Baxoxa ngendlela abebephatheke ngayo lapho bephuma khona.
  - Besahamba bafikelwa umcabango wokuhamba bangaziwa lapho baya khona. (2)
- 1.11 1.11.1 UMjwayeli waya kulo muzi uyise ayejwayele ukuya kuwona eyobuza ukuthi ngabe uyise akashongo yini ukuthi uyaphi.
- 1.11.2 UMduduzi wabikela amaphoyisa.
- 1.11.3 UFanyana wahamba waya kobuza kwamakhelwane lapho okwakujwayele khona umama wakhe. (6)
- 1.12 Amaphuzu AMABILI kwalandelayo:
- Wathi angawina ilotho wamema zonke izihlobo nabangani ukuthi bazojabula naye kulo mcimbi wazisa bonke ababekhona ukuthi izingane zakhe zimphathe kabi kanjani lapho yena nomkakhe sebephelelwe ngamandla okuzondla, nakuba bona bazikhulisa kahle.
  - Wanquma ukuthi angeke azabele lutho emalini ayeyiwine kwilotho.
  - Wathi ifa lonke liyotholwa abazukulu bakhe. (2)
- 1.13 Amaphuzu angathinta AMATHATHU kwalandelayo:
- Hlonipha uyihlo nonyoko ukuze izinsuku zakho zande ezweni. Ngenxa yokungahloniphi abazali bawo, amadodana kaManyoba alahlekelwa yithuba lokwabelwa imali eyayingashintsha izimpilo zawo.
  - Ikusasa alaziwa, izinto zingashintsha zibe ngenye indlela ngokuphazima kweso. Amadodana kaManyoba ayecabanga ukuthi ngenxa yokuthi abazali bawo abasenamandla okuzondla kusho ukuthi yiwona asezothatha izinqumo ngokuthi izimpilo zawo aziphila kanjani.
  - Kuhle ukubonisana nonkosikazi wakho noma nomyeni wakho uma uthatha izinqumo. Izinkinga eziningi ezivela kule ndaba zidalwa ukuthi amadodana kaManyoba athatha izinqumo ewodwa ashiya amakhosikazi awo ngaphandle.
  - Umuntu ophila ngobuqotho nokwethembeka kuMdali akesweli uhlale enikwa njalo konke akudingayo. UMdali wabona ukukhala kukaManyoba kwathi ngenxa yemisebenzi yakhe emihle wase emnika umvuzo welotho. (3)
- 1.14 Umbono.
- UManyoba walihlelela ikusasa lakhe nelomndeni wakhe. Iphutha alenza ukuthi wacabanga ngendlela yakudala. Wazitshela ukuthi ukufundisa nokwakhela amadodana akhe imizi kungukuzibekela kanti uyaphazama. NgokukaManyoba konke ayekwenza esasebenza kwakungukulungiselela ikusasa lakhe nonkosikazi wakhe. (3)

(3)  
[35]

## NOMA

## UMBUZO 2

### **UMSHADO – N Zulu**

- 2.1 Esitobhini/erenki. (1)
- 2.2 Iphuzu ELILODWA kwalandelayo:
- Wayengathwele ekhanda.
  - Izinwele zakhe zazikanywe kahle.
  - Isiketi ayesigqokile sasisifishane.
  - Wathathwa ubuhle/uthando (1)
- 2.3 Wayengenazo izingane/C. (1)
- 2.4 Amaphuzu AMABILI kwalandelayo:
- Waqala ukubona ubaba kaTholakele ngelanga lomshado, wayengakaze ambone ngaphambi kwalokho.
  - Wayengazi ukuthi uTholakele ufunde wagcinaphi, usebenzaphi nokuthi wenzani lapho esebenza khona.
  - Akazi ukuthi kungani engabatholanga abantwana emshadweni wakhe wokuqala.
  - Akazi nokuthi umkhwenyana wakhe wokuqala wabulawa yini.
  - Akazi noma unabo abafowabo nodadewabo. (2)
- 2.5 Amaphuzu AMABILI kwalandelayo:
- UBhekani wayefuna ukushada noTholakele, lokhu kwakungahambisani nenqubo yesintu. Umfana ongakaze ashade akumele ashade nomfelokazi. Umama wakhe wayefuna ashade noLindiwe ngoba wayengakaze ashade ngaphambili.
  - Umama kaBhekani wayebona ukuthi uTholakele mdala kunoBhekani. UBhekani yena engenandaba nalokho.
  - Umama kaBhekani wayefuna uBhekani ashade noLindiwe ngoba elingana naye futhi eyintombazane eziphethe kahle futhi efundile, uTholakele wayengenaso isimilo futhi engafundile. (2)
- 2.6 Amaphuzu AMABILI kwalandelayo:
- Wayefuna ukungena uTholakele.
  - Wayesongela uBhekani ethi ngeke avume ukuthi ashade noTholakele.
  - Wayehlale elwisana noBhekani uma embona noTholakele. (2)
- 2.7 Amaphuzu AMABILI kwalandelayo:
- UTholakele wayengamhloniphi uBhekani.
  - Wayengamtsheli izinto ezidinga ukwaziwa umuntu ozoshada naye njengemvelaphi yakhe nokuthi wayesebenzaphi, enza msebenzi muni nokuthi wayefunde wagcinaphi.
  - Wayebona ukuthi ukuzwana kwakhe noPamela kunobugebengu kodwa engakwazi ukuthola ukuthi hlobo luni lobugebengu.
  - Wayazi ukuthi uTholakele unobudlelwano bezocansi noPamela.
  - UTholakele wayephuza utshwala.
  - UTholakele wayesebenzisa izidakamizwa.
  - Ubudlelwano bukaTholakele noBhatomu babubeka impilo kaBhekani engozini. (2)

- 2.8 2.8.1 Angazi ukuthi enzenjani/uzothini. (2)
- 2.8.2 Ahambe kancane ukuze angabalandeli eduze laba ayebalandela. (2)
- 2.8.3 Ebuka uTholakele engafuni abone ukuthi uyambuka. (2)
- Amaphuzu AMABILI kwalandelayo:
- 2.9
- Yilapho uBhekani aphupha uyise ejaha intombazane egqoke izingubo ezimnyama eyixosha emzini wakhe. (1)
  - Ilapho uBhekani ephupha uyise eza noLindiwe embambe ngengalo. (1)
  - UBhekani waphupha ubaba wakhe engenisa abantu esangweni kuthe uma sekungena intombazane yezingubo ezimnyama wayivimba. (1)
- Amaphuzu AMABILI kwalandelayo:
- 2.10
- Ngokuthandana noTholakele uBhekani akadicilelanga phansi isithunzi sakhe kuphela kepha nesomndeni.
  - Umndeni wakhe wawethemba ukuthi ngoba ufundile naye uzoshada nentombazane efundile.
  - Ubaba wakhe wayelindele ukuthi uzoshada nomuntu ohloniphekile ozokwandisa isibongo ngokuthola abantwana, uTholakele wayemdala kunoBhekani okusho ukuthi kwakungase kube nzima ukuthola abantwana. Kanti vele uTholakele wayengabatholi abantwana, akazange abathole nasemshadweni wakhe wokuqala. (2)
- 2.11 Amaphuzu AMABILI kwalandelayo:
- Wakwazi ukutshaleka uTholakele imali yokukhokha ibheyili kaZenze.
  - Wakwazi ukukhokha lonke ilobolo, waze wanezelela ngaphezulu ngesikhathi sebekhala 'abasekhweni' ukuthi imali efike nabakhongi incane.
  - Wakwazi ukuthwala izindleko zomshado. (2)
- 2.12
- Akazange avume ukuba ngumkhongi kaBhekani ngoba yena noBhekani babengaboni ngaso linye ngendaba yokuthi aganwe nguTholakele.
  - Wathi angeke eze nasemshadweni, kwaze kwadingeka uBhekani aye komncenga. (2)
  - Wakwazi ukubeka imali ebhange. (2)
- 2.13 Amaphuzu AMABILI kwalandelayo:
- Washela umfelokazi ozilile.
  - Wamlobola engazange agezwe asuswe isinyama sokushonelwa.
  - Wathumela abantu abangahlobene naye ngokwegazi ukuthi bayomlolo.
  - Walobolela emjondolo wangaya ekhaya lakubo kaTholakele lapho okukhona abazali bakhe.
  - Akalandelanga inqubo elandelwa uma umuntu eganwa ngumfelokazi.
  - Waphambana nokwakushiwo nguyise emaphusheni.
  - Wanqaba ukushisa impepho ashweleze. (2)

2.14 Amaphuzu AMABILI kwalandelayo:

- UTholakele waqamba amanga kuBhekani wathi uZenze umzala wakhe.
- UTholakele waboleka imali kuBhekani wakhokha ibheyili kaZenze bangabe besamkhokhela njengokwethembisa kukaTholakele.
- UTholakele wahlangana noZenze badla imali yelobolo bakhohlisa uBhekani bathi uZenze umele abakubokaTholakele kwabaphansi.

(2)

- 2.15 Izimpendulo ziyokwehluka. Nasi isibonelo sempendulo engalindeleka:  
Iphuzu ELILODWA kwalandelayo:
- Intsha ephila esikhathini samanje ayiwahloniphi amasiko futhi ayifundisekile ngawo. Isikhathi le ndaba eyenzeka ngaso esamanje. UBhekani wenza okulindelekile entsheni ephila esikhathini samanje.
  - Intsha efundile iwabukela phansi amasiko ibona ukuthi into esiphelelwe isikhathi. Isibonelo, intsha yesikhathi samanje yazi ukuthi ukungathandani nomuntu oshonelwe yindoda kungukumcwasa lowo oshonelwe.
  - Abazali bakhe abazange bamfundise esemncane ukubaluleka kwamasiko. Kwakungamele balindele ukuthi uzowazi bebe bengamchazelanga ngawo esakhula.
- Nokunye okuyoshiwo ngabafundi okunembayo. (3)
- 2.16 Iqiniso. Baboshwa ngelanga lomshado beboshelwa amacala ehlukeno obugebengu. (3)  
[35]

**AMAMAKI ESIQEPHU A: 35**

## ISIQEPHU B: UMDLALO

### UMBUZO 3

#### **ABABULALI BENYATHI – RM Mngadi**

- 3.1 Uyikhansela. (1)
- 3.2 NguShandu. (1)
- 3.3 Musa ukulokhu ucabangana nabantu abatatazeliswa ngukuchithwa yisikhathi/Amakhosi aphelelwe yisikhathi. (1)
- 3.4 UDuma akafuni ukusebenzisana nenkosi ngokuthi aye kozehlisa kuyona acele imvume yokuletha intuthuko endaweni. (2)
- 3.5 UDuma wakhethwa ngabantu, inkosi yona ayikhethwanga ngokwentando yeningi yazalwa iyinkosi/UDuma nguyena oletha intuthuko emphakathini. (2)
- 3.6 Ongumqhathi/A. (1)
- 3.7 3.7.1 Awasenandawo/Awusekho umsebenzi wawo. (2)
- 3.7.2 Ukufika kwezinguquko kusho ukuthi umsebenzi wabo awusekho. (2)
- 3.7.3 Abathanda izindaba/abazazi zonke. (2)
- 3.8 Amaphuzu AMABILI kwalandelayo:  
• Itiyela lizolimaza izinselo zemfuyo yabo.  
• Izinkomo zizoxhoshwa ngugesu.  
• Umphakathi awunayo imali yokukhokha amareyithi. (2)
- 3.9 • UDuma ukhulele emakhaya uyayazi inqubo yakhona yokuthi konke okwenzekayo emphakathini kubikwa enkosini ngisho noma ngabe kuncane kangakanani. UDuma yena ukhetha ukungayi ukuyobika izinhlelo anazo zokuthuthukisa umphakathi enkosini. Lokhu kuyayicasula inkosi kanye namanye amalunga omphakathi. (1)  
• Wanqaba ukuya esigodlweni senkosi ngemuva kokuthi isizehlisile yathumela isigijimi ukuthi sizombiza. (1)
- 3.10 Amaphuzu AMABILI kwalandelayo:  
• Wakhuthaza uDuma ukuthi angayi kokhothama enkosini nakuba abuye wawushintsha lo mqondo.  
• Waya kokhuluma nonkosikazi wenkosi uMaNgema ngaphandle kokubonisana nomyeni wakhe.  
• Waxosha uMbandlwa emzini wakhe. Unkosikazi ohloniphayo angeke axoshe abangani bendoda yakhe emzini wabo.  
• Waduba wabuyela kubo ngoba uDuma ayengafuni ukumlalela, kamuva wabuye wabuyela emzini wakhe futhi. (4)

- 3.11
- **UDuma:** Akafuni ukuzehlisa enkosini acele ukusebenzisana nayo. Nakuba akhethwa ngabantu kodwa njengomuntu okhulele emakhaya uyayazi inqubo yokuthi konke kuyabikwa enkosini kwesinye isikhathi hhayi ngoba ufuna imvume kodwa ukuyazisa inkosi ngokuqhubekayo endaweni yayo.
  - **Inkosi:** Kwakumele ikwamukele ukuthi ukushintsha komthethosisekelo kusho ukuthi inqubo angeke isafana. Inhlonipho amakhosi ayeyithola ngaphambi kwentando yeningi yayingeke isafana neyesikhathi sikaHulumeni wentando yeningi.

(4)

- 3.12 Kulo mdlalo uDlamini nomndeni wakhe yibona abashona. Bashona kabuhlungu ngokushiselwa umuzi wabo. Ukufa kukaDlamini kwakungenxa yokwesekela kwakhe inkosi. UDlamini noDuma basebephenduke ikati nenja ngoba uDlamini ebona ukuthi uDuma akanayo inhlonipho. Izenzo zakhe zikhombisa indelelo.

### NOMA

UMbandlwa naye wabulawa ngoba esekela uDuma.

(3)

- 3.13 Izimpendulo ziyokwehluka. Nasi isibonelo sezimpendulo ezingavela:

- Njengoba kwasekuqalile ukuthi uDuma nenkosi besizwa ngumfundisi bathelane amanzi, lokho kwaqhubeka nasemphakathini wonkana. Kwaba nokuthula endaweni.
- Ukugula kwenkosi kwawethusa kakhulu umphakathi, ngenxa yokuthi wase uke walubona udlame lubheduka ngaphambilini, zonke izinhlaka zehlisa umoya kwaba nokuthula nokubambisana ngoba zesaba ukuthi uma ziphikisana nenkosi zazingayiphatha kabi emoyeni igcine ishona njengoba vele yayihlaselwe isifo senhliziyu ngenxa yokushona kukaMbandlwa noDlamini induna yayo.

Nokunye okunembayo okuyoshiwo ngumfundi.

(3)

- 3.14 Iqiniso.

Umfundi angesekela ngamaphuzu alandelayo:

- Ngaphambi kokufika kukaHulumeni wentando yeningi kwakunodlame kule ndawo lapho okwafa khona abantu abaningi.
- UDlamini namabutho bashaya balimaza uMbandlwa emhlanganweni owawubanjelwe esikoleni.
- UMaShezi uyasongelwa abafana abadlula ngendlela eduze kwakwakhe. Baqhumisa nesibhamu emoyeni. Lokhu kuyamethusa uMaShezi uzizwa esesaba.
- UDlamini nomndeni wakhe bayabulawa. Kushiswa umuzi kaDlamini usha uyangqongqa.
- Ukubulawa kukaMbandlwa nakho kukhombisa udlame.
- UDlamini uthuka uDuma umbiza ngenja eklewulayo ngesikhathi uDuma ememezela umhlangano. Lokhu kudala ingxabano phakathi kwabo baxishe balwa.

(3)

**[35]**

## UMBUZO 4

### ISIKO NELUNGELO – N Zulu

- 4.1 NguDumisani. (1)
- 4.2 NguNondumiso. (1)
- 4.3 NguManzini/B noGwabini/A (1)
- 4.4 4.4.1 Ukufa akunamahloni kuthatha nabantu ababukeka bengakakufaneli. (2)
- 4.4.2 Ubethandwa ngabantu/Ubebathanda abantu nabo bemthanda. (2)
- 4.4.3 Le ndaba ifuna umuntu osekhulile ngokomqondo. Ozihlaziwayo izinto ngaphambi kokuthatha izinqumo/ifuna ukuphathwa ngobunono/ngesizotha/ingathathelwa phezulu/inzima. (2)
- 4.5
- Akamthandi/Akekho omunye umuntu wesilisa ayoke amthande ngaphandle komkhwenyana wakhe oshonile.
  - UDumisani mncane kunaye ngeminyaka. (2)
- 4.6 Amaphuzu AMATHATHU kwalandelayo:
- UZungu uthi akafuni uThenjiwe apha theke kabi ngoba usezwa ubuhlungu bokushonelwa ngumyeni wakhe.
  - Uthi akamethembi uDumisani ukuthi uzokwazi ukumphatha kahle uThenjiwe.
  - Ukhombisa ukukhathazeka ngesikhathi uThenjiwe ehambe wangasho ukuthi uyaphi.
  - Uyamncoma uma emphakela ukudla ukhombisa uthando nokujabulela umsebenzi kaThenjiwe omuhle wokumnakekela.
  - Wayefisa ukuthi uThenjiwe akhululwe abuyele ekhaya kodwa wacindezelwa uMaMbatha emsabisa ngokuthi uzoziqhatha namadlozi uma evumela uThenjiwe abuyele kubo. (3)
- 4.7 Amaphuzu AMATHATHU kwalandelayo:
- Akazange anike uThenjiwe ithuba lokuzila abhekane nokushona komyeni wakhe, wathi esanda kungcwatshwa umyeni kaThenjiwe uMaMbatha wayesekhuluma indaba yokuthi kumele angenwe. Lokho kwakukhombisa ukungamdabukeli esimweni ayebhekene naso.
  - Wamhlukumeza uThenjiwe wabophisa umngani wakhe uSipho wamqambela amanga wathi nguyena oyimbangela yokuthi uThenjiwe anqabe ukugana uDumisani.
  - Wasabisa uThenjiwe ngokuthi uzombophisa ngokuzama kwakhe ukudlisa uDumisani ushevu ngoba engafuni ukumgana.
  - Wahlukanisa uDumisani nomama wengane yakhe ngoba efuna uDumisani ashade noThenjiwe ngoba yena esalotsholwa umama wengane engakalotsholwa. (3)

- 4.8 Abazali bakhe abazange bameseke uma ethi ufuna ukubuya azohlala ekhaya ngoba kwaZungu bemphoqa ukuthi agane uDumisani. (Nokunye okunembayo) (2)
- 4.9 Iphuzu ELILODWA kwalandelayo:
- UNondumiso wafika kwaZungu ezozama ukubonisana noMaMbatha ngendaba kaThenjiwe yokungenwa. UMaMbatha wamdelela wamxosha.
  - UNondumiso wafika kwaZungu ezovakashela uThenjiwe, uMaMbatha wamtshela ukuthi akakhulume asheshise ngoba uThenjiwe uyasebenza. (2)
- 4.10 Amaphuzu AMATHATHU kwalandelayo:
- UThenjiwe watshela uSipho ukuthi weqile emzini wathi uvakashela udadewabo ukuze akwazi ukuzombona.
  - USipho watshela uThenjiwe ukuthi icala athweswa lona elokonisa yena uThenjiwe emshadweni. Kwathiwa uyophuma ejele mhla uThenjiwe wavuma ukugana uDumisani.
  - USipho watshela uThenjiwe ukuthi uhlezi kabuhlungu ejele wase emkhuthaza ukuthi ashintshe umqondo ngodaba lokugana uDumisani.
  - UThenjiwe watshela uSipho ukuthi uzogcina embulele uDumisani. (3)
- 4.11 Kwamphatha kabi kakhulu kwagcina kumthambisa inhliziyu wagcina evumile ukushada noDumisani. (2)
- 4.12
- UDumisani wayenomama wengane okwamele ukuba amshiye ukuze ashade noThenjiwe.
  - UThenjiwe wayemdala kunaye futhi akanikwanga ithuba lokuphawula ngalesi sinqumo.
  - Wayesemncane ngokweminyaka ukuthi usengaphoqwa ukushada nomfelokazi.
  - Waphucwa ilungelo lokushada nomuntu amthandayo. (3)
- 4.13 UThenjiwe ugcina esevuma ukushada noDumisani. Bagcina sebehleli kahle sekumnandi. UThenjiwe esezisola ukuthi wake wazama ukubulala uDumisani. (3)
- 4.14 Iqiniso.
- Abafundi bangesekela ngephuzu ELILODWA kwalandelayo:
- Ekuqaleni wayengahambisani nokuthi angene uThenjiwe kodwa wagcina esevumile ngoba engafuni ukuphoxa abazali.
  - Wancama ukushiya umama wengane yakhe ashade noThenjiwe ukuze ajabulise abazali bakhe. (3)

**[35]****AMAMAKI ESIQEPHU B: 35****NOMA**

## ISIQEPHU C: IZINDABA EZIMFUSHANE

### IZINYEMBEZI ZOTHANDO – DBZ Ntuli (Umhleli)

#### UMBUZO 5

#### ILOBOLO – S Zimema

- 5.1 5.1.1 Ufuna ukwelekelelwa ngezindleko zomngcwabo wendodakazi yakhe. (1)
- 5.1.2 Amaphuzu AMABILI kwalandelayo:  
• Ilobolo.  
• Umakoti.  
• Usuku lomshado wasesontweni. (2)
- 5.1.3 Zine/4. (1)
- 5.1.4 Kukhona abantu ababefuna ukuthwala umakoti wakhe. (1)
- 5.1.5 Ngocingo/B. (1)
- 5.1.6 Babethi umakoti waya kothwasa yini noma waya kolashwa. (1)
- 5.1.7 Bengizozikhokha. (2)
- 5.1.8 Amaphuzu AMABILI kwalandelayo:  
• Wangena ekamelweni lakhe wazivalela.  
• Wakhala.  
• Wangafuna ukukhuluma namuntu, kwala ngisho abazali bakhe bengqongqoza wangavula.  
• Wangafuna nokubamba ucingo lukamukhwe wakhe. (2)
- 5.1.9 Amaphuzu AMABILI kwalandelayo:  
• Umukhwe kwakumele azingcwabele ngoba ingane yakhe eyayishonile hhayi ekaMandlenkosi.  
• Umukhwe akazange akhombise ukumamukela uMandlenkosi njengomkhwenyana wakwakhe ukuba wayemnakile wayengamsiza.  
• Uthi akasebenzise imali yelobolo. (2)  
(Nokunye okunembayo okuyoshiwo ngabafundi).
- 5.1.10 Uthi uMandlenkosi akazithwale izindleko zomngcwabo. Baze bathi ukuba banayo imali ngabe bayelekelela. (2)
- 5.1.11 Umbono.  
Izimpendulo ziyokwehluka. Nasi isibonelo sezimpendulo ezingavela:  
Ubaba: Walahlekelwa naye yindodakazi.  
UMandlenkosi: Naye walahlekelwa yilobolo. (3)

## UMUNWE – S Zimema

- 5.2 5.2.1 Edendale/B. (1)
- 5.2.2 Ungumabhalane. (1)
- 5.2.3 Ufuna ukuthola intombi/umuntu azohlekisana naye. (1)
- 5.2.4 NguZodwa. (1)
- 5.2.5 Enkantini. (1)
- 5.2.6 Ngomaka omhlophe owawusemunweni lapho kuhlala khona iringi. (1)
- 5.2.7 Yenza ungahlonipheki emphakathini. (2)
- 5.2.8 Ukuya esontweni. (2)
- 5.2.9 Iphuzu ELILODWA kwalandelayo:  
• Wathi lapho uZodwa embuza ukuthi uthembekile yini wathi yebo ebe azi ukuthi akathembekile. (2)  
• UZodwa wabuza ukuthi ushadile yini wathi cha ebe eshadile.
- 5.2.10 • Unemigomo emihle aphila ngayo. Akazimisele ukuthandana nomuntu oshadile. (2)  
• Uyakwazisa ukwethembeka nokubaqotho kumuntu athandana naye.
- 5.2.11 Umbono. (3)  
Akusiwona wonke amadoda ashadile afaka amaringi.

**AMAMAKI ESIQEPHU C: 35**

## NOMA

## ISIQEPHU D: IZINKONDLO

### AMAHLOKOHLOKO/IZINKWAZI ZOTHUKELA – EJ Mhlanga noJJ Thwala

#### UMBUZO 6

#### 6.1 Inhlansi Yakho Thuli – SB Mlambo

- 6.1.1 UNontando. (1)
- 6.1.2 Kude/B. (1)
- 6.1.3 Umlilo wothando. (1)
- 6.1.4 Ngihamba ngingazi ngiyaphi/A. (2)  
Ngakuhlula ngenkulumo/B. (2)
- 6.1.5 Imvumelwano siqalo. (1)
- 6.1.6 Ngazihasha ngingembongi/Nganqoba ngingeqhawe. (2)
- 6.1.7 Isenzasamuntu. (1)
- 6.1.8 Kugcizelela ukujula kothando imbongi eyeyinalo ngoThuli. (2)
- 6.1.9 Ilirikhi. (1)  
Imbongi iveza imizwa yayo ngesithandwa sayo esisha esitholile. (1)
- 6.1.10 Amaphuzu AMABILI kwalandelayo:  
• Le nkondlo ikhuluma ngomuntu oqonywe yintombi akade eyishela.  
• Imbongi iqale ukubona lesi sithandwa sayo kade ilahlwe yintombi yayo, uNontando.  
• Imbongi isifisa ukuthi sengathi lolu thando elutholile lungangaqedwa muntu/lutho.  
(Nokunye okunembayo okuyoshiwo abafundi). (2)

#### 6.2 Kwamfaz' Ongemama

- 6.2.1 Kusemendweni/Emshadweni/Emzini. (1)
- 6.2.2 Amagama AMABILI kwalandelayo  
• Baba.  
• Mveli.  
• Menzi. (2)
- 6.2.3 Ukuxhumana siqalo. (1)

- 6.2.4 Ayikho indlela umuntu angathola ngayo ukuthi uyophatheka kanjani emendweni/A. (2)  
Ngigula kakhulu/B. (2)
- 6.2.5 Namuhla ngiqombol' izintaba. (1)
- 6.2.6 Amaphuzu AMABILI kwalandelayo:  
• Uz' ube yisihlangu sami Baba/Umugqa we-21.  
• Uz'ungilonde Mveli/Umugqa wesi-06.  
• Uz'ungigcine Menzi/Umugqa we-13. (2)
- 6.2.7 **Ngidele** konke ngokwenda,  
**Ngidel'** ikhaya likababa,

**NOMA**

**Ngadel'** izihlobo nabangani,  
**Ngadela** nezinkalo zakithi, (2)

Imvumelwano siqalo. (1)

6.2.8 Isisebenzisele ukugcizelela ukuthi uthando enalo ngesithandwa sayo lukhulu kanganani. (2)

6.2.9 Amaphuzu AMABILI kwalandelayo:  
• Le nkondlo ikhuluma ngomuntu wesifazane owashiya konke ayekuthanda wayogana.  
• Njengoba eyogana ukulindele ukuthi akazukuphatheka kahle emendweni.  
• Uthembe uMdali ukuthi nguyena oyomvikela kukho konke.  
(Nokunye okunembayo okuyoshiwo ngabafundi). (2)

**[35]**

**AMAMAKI ESIQEPHU D: 35**  
**AMAMAKI ESEWONKE: 70**



# basic education

Department:  
Basic Education  
**REPUBLIC OF SOUTH AFRICA**

## **NATIONAL SENIOR CERTIFICATE**

**IBANGA LE-12**

**ISIZULU ULIMI LOKUQALA LOKWENGEZA (FAL)**

**IPHEPHA LESIBILI (P2)**

**NOVEMBA 2014**

**AMAMAKI: 70**

**SIKHATHI: amahora ama-2**

**Leli phepha linamakhasi angama-19.**

**IMIYALELO KWABAHLOLWAYO**

1. Fundisisa kahle imiyalelo ekuleli khasi ngaphambi kokuba uphendule imibuzo.
2. Ungayifundi yonke imibuzo ekuleli phepha. Bheka OKUQUKETHWE ekhasini elilandelayo bese umaka izinombolo zemibuzo yezincwadi ozifundile kulo nyaka. Ngemuva kwalokho funda le mibuzo bese ukhetha imibuzo ezincwadini EZIMBILI ozophendula ngazo.
3. Leli phepha lineziqephu EZINE:  

ISIQEPHU A: Inoveli	(35)
ISIQEPHU B: Umdlalo	(35)
ISIQEPHU C: Izindaba ezimfushane	(35)
ISIQEPHU D: Izinkondlo	(35)
4. Phendula imibuzo EMIBILI kuphela, umbuzo OWODWA esiqeshini ngasinye.  

ISIQEPHU A: INOVELI  
Phendula umbuzo ngenoveli EYODWA oyifundile.

ISIQEPHU B: UMDLALO  
Phendula umbuzo ngomdlalo OWODWA owufundile.

ISIQEPHU C: IZINDABA EZIMFISHANE  
Phendula imibuzo ngazo ZOMBILI izindaba ezimfishane ezihlolwayo.

ISIQEPHU D: IZINKONDLO  
Phendula imibuzo ngezinkondlo EZIMBILI ezibuziwe.
5. Sebenzisa uhlu lokubheka imibuzo ephenduliwe (checklist) ukubheka ukuthi ukhethe ngandlela efanele yini.
6. Landela imiyalelo esekuqaleni kwesiqephu NGASINYE.
7. Bhala izinombolo njengoba zibhaliwe ephepheni lemibuzo.
8. Qala ISIQEPHU NGASINYE ekhasini ELISHA.
9. Bhala ngobunono nangesandla esifundekayo.
10. Qikelela ukusebenzisa isikhathi esicishe sibe imizuzu engama-60 esiqeshini ngasinye.

**OKUQUKETHWE:**

Leli khasi lizokusiza ukukhetha imibuzo ofisa ukuyiphendula ngaphandle kokufunda yonke imibuzo.

<b>ISIQEPHU A: INOVELI</b>		
<b><i>Phendula noma yimuphi umbuzo OWODWA kulesi siqephu</i></b>		
<b>IZINOMBOLO ZEMIBUZO</b>	<b>IMIBUZO</b>	<b>IKHASI</b>
1. <i>Kusinda Kwehlela Endodeni</i>	Umbuzo omfishane	5–6
2. <i>Umshado</i>	Umbuzo omfishane	7–8
<b>ISIQEPHU B: UMDLALO</b>		
<b><i>Phendula noma yimuphi umbuzo OWODWA kulesi siqephu</i></b>		
3. <i>Ababulali Benyathi</i>	Umbuzo omfishane	9–10
4. <i>Isiko Nelungelo</i>	Umbuzo omfishane	11–12
<b>ISIQEPHU C: IZINDABA EZIMFISHANE</b>		
<b><i>Phendula imibuzo kuzona ZOMBILI izindaba ezimfishane ezihloliwe.</i></b>		
5.1 <i>Ilobolo</i>	Umbuzo omfishane	13–14
5.2 <i>Umunwe</i>	Umbuzo omfishane	14–15
<b>ISIQEPHU D: IZINKONDLO</b>		
<b><i>Phendula noma yimuphi imibuzo EMIBILI kulesi siqephu</i></b>		
6.1. <i>Inhlansi Yakho Thuli</i>	Umbuzo omfishane	16–17
6.2. <i>Kwamfaz' Ongemama</i>	Umbuzo omfishane	18–19

**Uhlu Lokubheka Imibuzo Ekhethiwe (Checklist):**

<b>ISIQEPHU</b>	<b>IZINOMBOLO ZEMIBUZO</b>	<b>IMIBUZO EPHENDULIWE</b>	<b>THIKHA UMBURU OWUKHETHILE</b>
A-INOVELI (Imibuzo emifishane)	1–2		
<b>NOMA</b>			
B-UMDLALO (Imibuzo emifishane)	3–4		
<b>NOMA</b>			
C-IZINDABA EZIMFISHANE (Imibuzo emifishane)	5		
<b>NOMA</b>			
D-IZINKONDLO (Imibuzo emifishane)	6		
<b>Qaphela:</b> Qiniseka ukuthi uphendule imibuzo eziqeshini EZIMBILI kuphela.			

**ISIQEPHU A: INOVELI****UMBULO 1: KUSINDA KWEHLELA ENDODENI – SJ Mchunu**

Funda isiqeshana esingezansi bese uphendula imibuzo ezolandela:

Ngelanga lomcimbi, uManyoba noMaNdlovu bagqoka babahle **ngezikanokusho** izingubo lezi. Umcimbi waqala ngehora leshumi ekuseni. Umphathi womcimbi wawuqalisa kahle kakhulu ngokuhlalisa wonke umuntu kahle. Kwavulwa ngomthandazo maqede **kwahlalwa ohlelweni**.

Ubaba ukhuluma njenge sitatanyiswa: 'Okubhalwe eBhayibhelini encwadini yokuqala kaMalaki, evesini lesithupha kuya kwelesikhombisa; kuthi: Indodana idumisa uyise, nenceku inkosi yayo; uma nginguyise, kuphi ukudunyiswa kwami? Uma ngiyinkosi, kuphi ukwesatshwa kwami? Usho njalo uJehova Sebawoti kinina baPristi enilidelele igama lami. Nokho nithi: Silidelele kanjani igama lakho na? Ngokunikela ngesinkwa esingcolileyo e-altare lami. Bese nithi: sikungcolise ngani na?'

'Mhlawumbe nezingane zami zibuza lowo mbuzo kimina ngendlela ezasiphatha ngayo nonina **sesiphelewe amandla okuziphilisa**. Ngijabula kakhulu ngoba nazo izingane zami zikhona la kulo mcimbi. Angizuzihleba zizozizwela.

Angiyena uJehova kodwa thina sikhule sazi ukuthi ubaba nomama oNkulunkulu bakho basezweni, bakukhulise kahle bese kuthi uma bengesenamandla kube nguweni obanika ukudla kuze kufike izinsuku zabo zokuya kuMdali wabo. Ezinganeni zami akubanga njalo, zabona ukuthi kungcono ukuba zisehlukane nonina singahlali ndawonye. Okwahlanganiswa nguNkulunkulu kuhlukaniswa nguye futhi. Zasehlukane izinyanga ezine izingane zethu, zehlukanisa abantu asebehlale ndawonye iminyaka engaphezu kwamashumi amathathu nanhlanu. Ngazikhulisa ngezwi leNkosi lezi zingane. Liphilile izwi leNkosi kulesi senzo sazo?'

- 1.1 Ngowani lo mcimbi obanjwe lapha? (1)
- 1.2 Kwakungubani umphathi wohlelo walo mcimbi? (1)
- 1.3 Waqala ngasikhathi sini lo mcimbi? (1)
- 1.4 Wavula yiphi incwadi eBhayibhelini uManyoba ngesikhathi esethula inkulumbo? (1)
- 1.5 Khetha impendulo efanele kwezilandelayo:  
Amadodana kaManyoba anquma ukuthi umzali ngamunye wayezohlala izinyanga ... nendodana ngayinye.  
A Ezine  
B Ezimbili  
C Ezintathu (1)
- 1.6 Bhala izindawo EZINTATHU uManyoba ake asebenza kuzona ngesikhathi esasebenza. (3)

- 1.7 Chaza lezi zimo zokukhuluma ezibhalwe ngokugqamile njengoba zisetshenzisiwe esiqeshini esingenhla:
- 1.7.1 Ngelanga lomcimbi, uManyoba noMaNdlovu bagqoka babahle **ngezikanokusho** izingubo lezi. (2)
- 1.7.2 Kwavulwa ngomthandazo maqede **kwahlalwa ohlelweni**. (2)
- 1.7.3 Mhlawumbe nezingane zami zibuza lowo mbuzo kimina ngendlela ezasiphatha ngayo nonina **sesiphelewe amandla okuziphilisa**. (2)
- 1.8 UManyoba wayeyindoda eqotho. Bhala amaphuzu AMATHATHU asekela lo mbono. (3)
- 1.9 Chaza ukuthi wayephatheke kanjani uManyoba ngenkathi ehlala kwandodana yakhe uMjwayeli. (2)
- 1.10 Chaza ngokwenzeka esiteshini eMnambithi ngesikhathi uManyoba ehlangana nonkosikazi wakhe bevela emizini yamadodana abo. (2)
- 1.11 Bhala imizamo eyenziwa yilawa madodana kaManyoba alandelayo ukuzama ukuthola yena nonkosikazi wakhe ngesikhathi bengatholakali esiteshini:
- 1.11.1 UMjwayeli. (2)
- 1.11.2 UMduduzi. (2)
- 1.11.3 UFanyana. (2)
- 1.12 Ngamaphuzu AMABILI chaza ukuthi uManyoba wazijezisa kanjani izingane zakhe ngokumphatha kabi kwazo. (2)
- 1.13 Ngamaphuzu AMATHATHU bhala isifundo ositholile ngokufunda le ndaba. (3)
- 1.14 Ngabe IQINISO noma UMBONO ukuthi uManyoba akalilungiselelanga ikusasa lakhe nonkosikazi wakhe? Sekela impendulo yakho. (3)

**[35]****NOMA**

**UMBUZO 2: UMSHADO – N Zulu**

Funda isiqeshana esingezansi bese uphendula imibuzo ezolandela:

'Bengimtshelile futhi lo sisi ukuthi ngifuna ukuxoxa naye. Kufanele ame uma edlula lapha,' kukhuluma uBhekani ezinika ithemba. Asondele uBhekani. Asondele noTholi nomuntu wakhe. Bahlangane. Kubingelelwane. Kwedlulwane. **Ziyime emthumeni** kuBhekani. UTholi nomlisa bedlule sengathi abakaze bambone.

'Ngizokwenzenjani?' UBhekani ozibuza lowo mbuzo. 'Angijike ngibalandele kancane.' Nangempela bathi bethi sithe oTholi, wayejika ngokushesha uBhekani. Walandela uTholi nomlisa lowo. Imxake le nto uBhekani. Bayazana laba bantu. Bayaxoxa futhi baze bahleke benjalo nje. Alandele nokho. Uthe ebona wayesalela manje uTholakele. Angazi uBhekani noma sebembonile yini, bafuna ukumxosha. Alandele. Kokunye le ndoda iyolanda isikhali manje. UBhekani ocabanga lokho. **Ahole izinyawo** manje uBhekani. Amehlo akhe abe elokhu **entshontsha** uTholakele. Uthe evusa ikhanda wabona uTholakele emqhweba. Ajabule kuthi inhliziyo ayiphume ngomlomo kuBhekani.

'Ngiyabona ukuthi sewesaba ukungimisa ngoba ngihamba noZenze.'

'UZenze waphi yena lowo?'

'Owalapha ngiqashe khona Bhekani.'

Amangale uBhekani ebona ukuthi igama lakhe alikhohlakele.

'Uphuma ngalesi sikhathi njalo emsebenzini?'

'Cha. Kodwa kusasa ngisazophuma ngaso lesi sikhathi.'

'Injongo yami ukuthi sihlale phansi sixoxe Tholakele. Kusukela ngikubonile ngibe nesifiso sokuxoxa kabanzi nawe.'

'Asenze nje Bhekani. Namhlanje ayikho into esingayixoxa ngoba bengingazi ukuthi uzongivakashela.' Adumale uBhekani.

- 2.1 Bahlangana kuphi oBhekani noTholakele okokuqala? (1)
- 2.2 Yini eyenza uBhekani angaboni ukuthi uTholakele ungumfelokazi nakuba ayegqoke izingubo ezimnyama? (1)
- 2.3 Khetha impendulo efanele kwezilandelayo:
- UTholakele:
- A Wayenengane eyodwa.  
B Wayenezingane ezimbili.  
C Wayengenazo izingane. (1)
- 2.4 UBhekani wayengazi lutho ngemvelaphi (background) kaTholakele. Bhala amaphuzu AMABILI asekela lokhu. (2)
- 2.5 Bhala amaphuzu AMABILI ayenza kube nokungezwani phakathi kukaBhekani nomama wakhe mayelana nokuganwa/ukushada kukaBhekani nguTholakele. (2)

- 2.6 Ngamaphuzu AMABILI bhala usho ukuthi uBhatomu wayeluphazamisa kanjani uthando lukaBhekani noTholakele. (2)
- 2.7 Bhala izinto EZIMBILI ezimbi uBhekani ayezibona ngoTholakele ocabanga ukuthi kwakumele zimenze angabe esashada naye. (2)
- 2.8 Chaza lezi zimo zokukhuluma ezibhalwe ngokugqamile njengoba zisetshenzisiwe esiqeshini esingenhla:
- 2.8.1 **Ziyime emthumeni** kuBhekani. (2)
- 2.8.2 **Ahole izinyawo** manje uBhekani. (2)
- 2.8.3 Amehlo akhe abe elokhu **entshontsha** uTholakele. (2)
- 2.9 Kuwona wonke amaphupho kaBhekani yimaphi AMABILI acacisa/abonisa ukuthi ubaba wakhe akamfuni uTholakele njengomakoti wakwakhe? (2)
- 2.10 UBhekani akakwazanga ukujabulisa umndeni wakhe nokufeza izifiso zikababa wakhe. Sekela lo mbono ngamaphuzu AMABILI. (2)
- 2.11 UBhekani wayekwazi ukonga imali. Bhala amaphuzu AMABILI asekela lo mbono. (2)
- 2.12 Umalume kaBhekani ungumuntu odubayo (give up) uma into ingahambisani/ingavumelani naye. Sekela lo mbono ngamaphuzu AMABILI asendabeni. (2)
- 2.13 Kuningi okwenziwa nguBhekani okungahambisani nesiko. Bhala amaphuzu AMABILI asekela lo mbono. (2)
- 2.14 UZenze noTholakele benza uBhekani isilima ngezindlela eziningi. Bhala amaphuzu AMABILI asekela lo mbono. (2)
- 2.15 Ngokwakho ukucabanga yini eyayenza uBhekani enze izinto ezazingahambisani nokwakulindelwe ngabazali bakhe nomphakathi waseNyawushane kuyena? (3)
- 2.16 Ngabe IQINISO noma UMBONO ukuthi ubudlelwano bukaPamela noTholakele bunobugebengu? Sekela. (3)

**[35]****AMAMAKI ESIQEPHU A:****35****NOMA**

**ISIQEPHU B: UMDLALO****UMBUZO 3: ABABULALI BENYATHI – RM Mngadi**

Funda isiqeshana esingezansi bese uphendula imibuzo ezolandela:

*(Emzini weKhansela, uDuma. UDuma uhleli esigcakini nomkakhe uMaShezi, bayaxoxa.)*

MaShezi: *(uyahleka, ushaya izandla sakubabaza)* He! He! He! Mina lo MaShezi, sengingumama oyinkosikazi yekhansela! Bonke abafazi bale ndawo sebengibingelela sengathi babona inkosikazi yenkosi. *(aphinde ashaye izandla)* Hhawu! Hamba mzabalazo!

Duma: *(emamatheka)* We! Nina bafazi nijatshuliswa wubala ngempela. Nifana nchimishi nezingane.

MaShezi: *(ebuka umyeni wakhe emehlweni)* Ha! Ha! Ubani ongayeka ukujabula esesimweni esifana nesami. Uthi wubala baba uqala ukuhola le mali osuyihola? Angithi ngikhuluma nje usuyakhulekelwa wena.

Duma: *(ubuso bushintshe buhwaqabale)* MaShezi! Lokho-ke yikho okungihluphayo. **Osibhincamakhasana** bayasho ukuthi inkosi yendawo uShandu, akeneme futhi ukubeka kucace ukuthi mina sengicabanga ukuthi sengiyinkosi. Eqinisweni angazi ukuthi inkosi ikhathazwa yini ngoba mina ngakhethwa ngabantu. Angiyona inkosi, kodwa yimi olawula intuthuko yalapha endaweni yakithi.

MaShezi: Amakhosi **aphelelwe yisikhathi** manje. Phela intando yeningi iphoqa ukuthi abaholi mabakhethwe ngabantu. Inkosi yakhethwa nini-ke yona? Suka lapha! Musa ukulokhu ucabangana nabantu abatatazeliswa **ngukuchithwa yisikhathi**.

Duma: Kuzocaca maduze nje ngoba izinhlelo zentuthuko sezizoqala kungekudala. Kufanele ngihlele imihlangano yomphakathi kodwa mina ngeke ngilokhu ngiyotatazelela inkosi ngicelana nelungelo lokubiza imihlangano. Angithi yona ifuna ukubikelwa, incengwe ngisho umuntu ezokwenza idina lodwa leli.

- 3.1 Unasikhundla sini uDuma kule ndawo? (1)
- 3.2 Ngubani isibongo senkosi yale ndawo? (1)
- 3.3 Kulesi siqeshana esingenhla caphuna umusho oshiwo nguMaShezi okhuthaza uDuma ukuthi angayihloniphi inkosi. (1)
- 3.4 Yisiphi isizathu esenza kube nokungezwani phakathi kukaDuma nenkosi? (2)
- 3.5 Ngokwalesi siqeshana ukuphi umehluko phakathi kukaDuma nenkosi? (2)

- 3.6 Khetha impendulo efanele kwezilandelayo:  
Kulo mdlalo uMbandlwa uvezwe njengomelekeleli:
- A Ongumqhathi  
B Ongumlamuli  
C Ongenalusizo (1)
- 3.7 Chaza lezi zimo zokukhuluma ezibhalwe ngokugqamile njengoba zisetshenzisiwe esiqeshini esingenhla:
- 3.7.1 Amakhosi **aphelelwe yisikhathi** manje. (2)
- 3.7.2 Musa ukulokhu ucabangana nabantu abatatazeliswa **ngukuchithwa yisikhathi**. (2)
- 3.7.3 **Osibhincamakhasana** bayasho ukuthi inkosi yendawo uShandu, akeneme futhi ukubeka kucace ukuthi mina sengicabanga ukuthi sengiyinkosi. (2)
- 3.8 Bhala amaphuzu AMABILI abekwa yinkosi uShandu nenduna yayo uDlamini okuyiwona enza bangahambisani nentuthuko ezoledwa nguDuma. (2)
- 3.9 UDuma ukhombise ukungayihloniphi inkosi ngezindlela eziningi. Bhala izenzo EZIMBILI zikaDuma ezikhombisa ukwedelela kwakhe inkosi. (2)
- 3.10 UMaShezi uvezwe njengomlingiswa othathela izinto phezulu, akazicabangisisi izinto ngaphambi kokuzenza. Sekela lo mbono ngamaphuzu AMABILI. (4)
- 3.11 UDuma nenkosi banamakhanda aqinile. Sekela lo mbono ngokucaphuna amaphuzu AMABILI emdlalweni. (4)
- 3.12 Kuvamile ukuthi uma kunodlame kube nabantu abaningi abashonayo ngenxa yokwethembeka kwabo kubaholi bamaqembu abawesekayo. Chaza ukuthi kulo mdlalo ngubani owashona ngenxa yokwethembeka kwakhe kumholi wakhe. (3)
- 3.13 Ngokwakho ukucabanga ukuxolelana kukaDuma nenkosi uShandu kwaba namthelela muni esimweni senhlalo kule ndawo? (3)
- 3.14 Ngabe IQINISO noma UMBONO ukuthi abantu bakule ndawo bayakuthanda ukulwa? Sekela. (3)

**[35]****NOMA**

**UMBUZO 4: ISIKO NELUNGELO – N Zulu**

Funda isiqeshana esingezansi bese uphendula imibuzo ezolandela:

*(Kusendlini enkulu. Kuhleli uZungu noMaMbatha bayaxoxa)*

MaMbatha: Sengathi wahamba kahle umngcwabo womfana.

Zungu: Cha nami ngibona sengathi wabamuhle. Ngamangazwa ubuningi babantu nje, kanti umfana ubesemncane.

MaMbatha: Lisho uliphinde. Kusobala ukuthi lo mfana **ubengumuntu wabantu**. Okubi nje ukuthi ushiye ingane yabantu isencane.

Zungu: Impela **ukufa kusikhombisile ukuthi kulinuku**. Le ngane encane kangaka izoba yini nje manje? Kodwa uthi ngeke ivele isuke ibuyele kubo?

MaMbatha: Ingakwenza kanjani lokho? Phela isingumuntu walapha ekhaya. Uma iya kubo ingahamba ngokuvakasha kuphela.

Zungu: Le nto ngike ngayixoxa nomakhelwane naye nokho akangisizanga okutheni. Into kuphela engibone sengathi isemqondweni wakhe ukuthi siyidedele ingane uma ifuna ukubuyela ekhaya.

MaMbatha: Uyabona Manzini, ungavumi ukulawulelwa amanye amadoda izindaba zomuzi wakho. Le ndaba **ibucayi kakhulu**. Phela umalokazane walapha ekhaya lo uhlanganiswe namadlozi akoNyamakayishi. Bangathini-ke bona esehamba kalula nje?

Zungu: Usho kanjalo nkosikazi?

MaMbatha: Qaphela impela Manzini. Sengathi uzosilandela ulaka lwabaphansi. Mina ngibona le ngane kufanele ibe ngumuntu walapha ekhaya unomphela.

Zungu: Kodwa singakwenza kanjani ukuthi umalokazane emncane kangaka abe owalapha ekhaya unomphela.

MaMbatha: Kuzoboniswa phela. Akhona namasiko ayesiza uma umuntu eshonelwe yindoda esemncane.

Zungu: Yiliphi-ke lelo siko?

MaMbatha: Phela kungabhekwa kubo abafana balapha ekhaya. Kokunye ukhona ongavuma ukuthatha isikhundla sikamkhwenyana. *(Kuthuleke besabukana)* Angithi uyalazi lelo siko baba?

Zungu: Ngiyalazi impela. Kodwa uthi ukhona lapha ekhaya ongavuma lelo siko? UDumisani ngibona sengathi usemncane mina.

4.1 Bhala igama lendodana yakwaZungu esaphila.

(1)

- 4.2 Ngubani udadewabo kaThenjiwe? (1)
- 4.3 Khetha impendulo efanele kwezilandelayo:  
Isithakazelo sakwaZungu:
- A UGwabini  
B UManzini  
C UMenziwa (1)
- 4.4 Chaza lezi zimo zokukhuluma ezibhalwe ngokugqamile ngezansi njengoba zisetshenziwe esiqeshini esingenhla:
- 4.4.1 Impela **ukufa kusikhombisile ukuthi kulinuku.** (2)
- 4.4.2 Kusobala ukuthi lo mfana **ubengumuntu wabantu.** (2)
- 4.4.3 Le ndaba **ibucayi kakhulu.** (2)
- 4.5 Bhala izizathu EZIMBILI ezinikezwa nguThenjiwe ezenza angafuni ukungenwa nguDumisani. (2)
- 4.6 UZungu uyamthanda futhi akafuni aphaatheke kabi umakoti wakwakhe. Bhala amaphuzu AMATHATHU asekela lo mbono. (3)
- 4.7 UMaMbatha ungumama onenhliziyo embi. Sekela lo mbono ngamaphuzu AMATHATHU atholakala kulo mdlalo. (3)
- 4.8 Abazali bakaThenjiwe bahlonipha kakhulu amasiko kunamalungelo. Bhala iphuzu ELILODWA elisekela lokhu. (2)
- 4.9 UNondumiso noMaMbatha babengazwani. Xoxa ngodweshu olwake lwaba khona phakathi kwabo. (2)
- 4.10 Ngamaphuzu AMATHATHU bhala okubalulekile ngengxoxo eyaba phakathi kukaSipho noThenjiwe ngesikhathi uThenjiwe emvakashele ejele. (3)
- 4.11 Ukufa kukaSipho kwaba namuphi umthelela/umphumela empilweni kaThenjiwe? Chaza. (2)
- 4.12 Chaza ukuthi ukuphoqwa kukaDumisani ukuthi ashade noThenjiwe kwamphuca/kwalithatha kanjani ilungelo lakhe lokuzikhethela unkosikazi. (3)
- 4.13 Phawula ngengwijikhwebu etholakala kulo mdlalo. Bhala amaphuzu AMATHATHU. (3)
- 4.14 Ngabe IQINISO noma UMBONO ukuthi uDumisani uyabahlonipha abazali bakhe. Sekela. (3)

**[35]****AMAMAKI ESIQEPHU B: 35****NOMA**

**ISIQEPHU C: IZINDABA EZIMFUSHANE****IZINYEMBEZI ZOTHANDO – DBZ Ntuli (Umhleli)**

Kulesi siqephu phendula YOMIBILI imibuzo; umbuzo 5.1 nombuzo 5.2.

**UMBUZO 5: ILOBOLO – S Zimema**

5.1 Funda lesi siqeshana esingezansi bese uphendula imibuzo ezolandela:

'Kulungile. Akahlalele kulelo themba lakhe aze ayofa njengoba esihlalise ethembeni kwaze kwafa omunye nje. 'Elami lithi, ngeke ngize ngifake ngisho elimnyama isenti. Ningamelekelela nina uma ninemali eningi. Lo muntu sisanda kumnikeza inqwaba yemali. Akasebenzise yona. Ukuba wayidedela ingane yakhe, ngabe asihluphani ngalutho nale ndoda. **Bengizozithwala** ngikhululeke izindleko zomngcwabo. Bengingeke ngimeme omunye umuntu.'

'Ndodana,' kusho uyise, 'izinyanga ezine ziningi kakhulu kumuntu owadilizwa emsebenzini. Ziningi izikhala esezagcwaliswa yileyo mali. Engikwaziyo wukuthi kwaphela yona imali kwasala izikhala. Mhlawumbe yaphela ngesonto lokuqala nje. Khohlwa yileyo mali.'

'Yindaba yakhe leyo. Angingeni ndawo mina kuleyo nto. Inhliziyo yami ibuhlungu kabi ngokulahlekelwa kabili. Ngilahlekelwe yimali engiyisebenzele kanzima, ngayipha umuntu ovele wagodla ingane yakhe. Wangibamba umuntu, engafuni ukungikhululela yona. Manje sekudingeka ngiphinde ngimuphe enye futhi, ngimngcwabele ingane yakhe? Kanti ngiyimayini yini mina? Kanti abanawo yini umndeni laba bantu? Yini angakhulumi nomndeni wakhe umelekelele uma ehluleka? Akakhulume nomndeni wakhe yena, ahlukane nami. Kuthi angivele ngimtshela ukuthi sengiyayidinga kwaleyo mali yelobolo engakuyena. Kuthi angiyoyilanda ngoba ayizange yenze lutho, kwaba umnikelo nje. Angizange ngibuyelwe yilutho mina. Kwaba yisipho engivele ngasipha umuntu engingahlobene ngalutho naye.'

'Kahle bo! Ungalokothi wenze ihlazo elinjalo.'

5.1.1 Yiluphi usizo olufunwa ngumukhwe kaMandlenkosi? (1)

5.1.2 Bhala izinto EZIMBILI ezazigodlwe ngumukhwe kaMandlenkosi. (2)

5.1.3 Zingaki izinyanga ayesezihlale ekhaya engasebenzi umukhwe kaMandlenkosi? (1)

5.1.4 Kungani kwakumele uMandlenkosi aye kobhala enkantolo nomakoti wakhe? (1)

5.1.5 Khetha impendulo efanele kwezilandelayo:

Umbiko owawazisa uMandlenkosi ngengozi evelele umakoti wakhe wafika:

A Ngesigijimi

B Ngocingo

C Ngencwadi

(1)

- 5.1.6 Babethini omakhelwane bakaMandlenkosi uma sebhlekisa ngokuthi ushadile kodwa akahlali naye umakoti wakhe. (1)
- 5.1.7 Chaza lesi simo sokukhuluma esibhalwe ngokugqamile njengoba sisetshenzisiwe esiqeshini esingenhla:  
**Bengizozithwala** ngikhululeke izindleko zomngcwabo. (2)
- 5.1.8 Chaza ukuthi yini eyenziwa nguMandlenkosi ukukhombisa ukuphatheka kabi kwakhe ngemuva kokuthola umyalezo wokuthi umakoti wakhe useshonile. Bhala amaphuzu AMABILI. (2)
- 5.1.9 Bhala izizathu EZIMBILI ezinikezwa/ezishiwo nguMandlenkosi ezenza angafuni ukuthwala/ukwelekelela umukhwe ngezindleko zomngcwabo. (2)
- 5.1.10 Uthini umbono wabazali bakaMandlenkosi ngodaba lokwelekelela/ lokusiza ngezindleko zomngcwabo. (2)
- 5.1.11 Ngabe IQINISO noma UMBONO ukuthi umuntu owalahlekelwa kakhulu ngokushona kukamakoti kaMandlenkosi ngubaba wakhe umakoti kunoMandlenkosi? Sekela. (3)

**UMUNWE: S Zimema**

- 5.2 Funda lesi siqeshana esingezansi bese uphendula imibuzo ezolandela:

Kunjengoba kade ngishilo ngathi bahle abantu lapha, kodwa kukhona oyedwa okuthi uma ngimbuka, luvele lungithi heqe uvalo. Nanguyana manje ehleli yedwa laphaya ngasekhoneni. Sengathi yinkomo edla yodwa nje leya? Hhayi, mhlawumbe kwenziwa wukuthi ngivamise ukumbona eyedwa. Kufanele ngisheshe, ngithathe ipuleti lami, ngihambe ngiyohlala eduze kwayo le ntokazi engigulisayo lapha ngaphakathi. Kufanele ngisheshe ngoba isikhathi sekhefu sincane, kanti kuningi okufanele ngikukhulume naleya ntokazi. Ngifuna ukuthola umuntu engizohlekisana naye, khona lapha ngaphakathi esibhedlela. Ngifuna abe munye nje kuphela, hhayi inqwaba. Angifuni ukuba nezintombi eziningi endaweni eyodwa. Lokho kudala izinkulumo eziningi kanye nezingxabano ezingapheli. Mina ngiyazithanda.

Angifuni igama lami lihuduleke phansi. **Yehlisa isithunzi** indaba yokubangwa yizintombi. Yimbi leyo nto. Ayibukeki. Iletha amakhulu amahloni. Nangaphandle kokuthi kubuye kwehlise isithunzi ukuqonywa kakhulu, isikhathi asisavumi neze. Umuntu sekufanele anamathele kulowo muntu wakhe oyedwa.

Angazi ukuthi yini le eyenza ukuthi silutheke, sibe nesibindi sokuyosukela abantu esingabazi ukuthi banjani, baphila yiphi impilo. Kuqala amasoka ayebulawa yizishimane ezinesikhwele. Izishimane lezo zazikhwelezela izintombi zazo. Namhlanje amasoka asevele azifele wona, engadutshulwanga, futhi engagwazwanga yizishimane. Okubuhlungu yikho ukuthi amasoka lawa abulala nabantu abangenacala, ngaso lesi sikhali esingabonakali.

- 5.2.1 Khetha impendulo efanele kwezilandelayo:  
Le ndaba yenzeka esibhedlela sase:  
A King Edward  
B Edendale  
C Greys (1)
- 5.2.2 Wenza msebenzi muni umbhali wale ndaba? (1)
- 5.2.3 Njengoba esanda kufika nje umbhali kulesi sibhedlela kunento eyodwa afuna ukuyithola. Shono ukuthi yini leyo. (1)
- 5.2.4 Ngubani igama le ntokazi engumhlengikazi kulesi sibhedlela umbhali afuna ukuba nobudlelwano nayo? (1)
- 5.2.5 Bahlangana kuphi umbhali nale ntokazi ayefuna ukuthi imqome? (1)
- 5.2.6 Wabanjwa kanjani umbhali wale ndaba ukuthi ushadile? (1)
- 5.2.7 Chaza lesi simo sokukhuluma esibhalwe ngokugqamile njengoba sisetshenzisiwe esiqeshini esingenhla:  
**Yehlisa isithunzi** indaba yokubangwa yizintombi. (2)
- 5.2.8 Bhala into EYODWA umbhali athi kungaba nzima ukuyenza uma le ntokazi ayithandayo ingayibeka njengombandela wokuthi imqome. (2)
- 5.2.9 Waqamba amanga wathini umbhali wale ndaba ngesikhathi eshela le ntokazi? (2)
- 5.2.10 UZodwa ungumuntu oqotho. Sekela lo mbono ngamaphuzu AMABILI atholakala endabeni. (2)
- 5.2.11 Ngabe IQINISO noma UMBONO ukuthi wonke amadoda ashadile abonakala ngokufaka amaringi eminweni? Sekela. (3)

**AMAMAKI ESIQEPHU C: 35**

**NOMA**

**ISIQEPHU D: IZINKONDLO****AMAHLOKOHLOKO/IZINKWAZI ZOTHUKELA – EJ Mhlanga noJJ Thwala**

Kulesi siqephu uzophendula YOMIBILI imibuzo; umbuzo 6.1 nombuzo 6.2.

6.1 Funda inkondlo engenzansi bese uphendula imibuzo ezolandela:

**Inhlansi yakho Thuli – SB Mlambo**

- 1 Ngisathwayiza ngizibona ngiyintandan' ezweni
- 2 Ngishiywe nguNontando dengwane
- 3 Amehlo anezithukuthuku zosizi,
- 4 Ngingaboni lutho wufasimba,
- 5 Kujuluke namehlo.
  
- 6 Ngakubona buqamama.
- 7 Ngakubona uyinhlansana.
- 8 Ngasondela, ngakubona ucwebezela.
- 9 Ngamangala, ngankema.
- 10 Ngakubona ungena kimi ngamehlo.
- 11 Ngezwa usuyifudumeza inhliziyo,
- 12 Yokhela, yalanguz' ilangabi.
- 13 Ngabuzwa ubulangulangu
- 14 Ngaziba, lakhula ilangabi.
- 15 Kokheleka nakwezinye izitho.
  
- 16 Ukunyamezela kwangiphika.
- 17 Ukubekezela kwanyamalala.
- 18 Wadlondlobala umlilo ngazidela.
- 19 Ngayihlomisa eyomlomo.
- 20 Ngayiphaka ezikhotheni zakwenu.
  
- 21 Ngakujuma ungazelele.
- 22 Ngakucoboshisa ngeyamazwi.
- 23 Ngagadla ngengedla wapaquza,
- 24 Ngabasela ngewisa ngakuguqisa,
- 25 Ngagwaza ngesijula.
  
- 26 Nganqoba ngingeqhawe.
- 27 Ngazihasha ngingembongi,
- 28 Yahlokom' imvelo.
- 29 Kwabakuhle konke.
  
- 30 Ngayithumb' eyakho inhliziyo,
- 31 Ngayokhelisa yokhela.
- 32 Kwahlangan' ilangabi.
- 33 Mawungacishwa muntu
- 34 Mawungacishwa mvula nomoya.

- 6.1.1 Ngesikhathi imbongi ihlangana noThuli yayikade ilahlwe ngubani? (1)
- 6.1.2 Khetha impendulo efanele kwezilandelayo:  
Ngesikhathi imbongi iqala ukubona uThuli yambonela:  
A Eduze  
B Kude  
C Ehlane (1)
- 6.1.3 Kule nkondlo imbongi ikhuluma ngomlilo. Hlobo luni lomlilo lolu imbongi ekhuluma ngalo? (1)
- 6.1.4 Chaza lezi zimo zokukhuluma ezilandelayo njengoba zisetshenzisiwe enkondlweni engenhla:  
A Ngisathwayiza ngizibona ngiyintandan' ezweni (2)  
B Ngakucoboshisa ngeyamazwi. (2)
- 6.1.5 Bhala uhlobo lwemvumelwano olutholakala kule migqa elandelayo:  
Ngayithumb' eyakho inhliziyu,  
Ngayokhelisa yokhela. (1)
- 6.1.6 Kusitanza sesi-5 tomula umugqa okhomba ukuthi imbongi iyigagu. (2)
- 6.1.7 Bhala uhlobo lwesifengqo oluqukethwe yilo mugqa olandelayo.  
Yahlokom' imvelo. (1)
- 6.1.8 Shono ukuthi ukuxhumana siqalo okutholakala kule migqa elandelayo kunamuphi umthelela emqondweni wenkondlo:  
Mawungacishwa muntu  
Mawungacishwa mvula nomoya. (2)
- 6.1.9 Iluhlobo luni lenkondlo? Sekela. (2)
- 6.1.10 Ngamaphuzu AMABILI nikeza umqondo wale nkondlo. (2)

## 6.2 Funda inkondlo engenzansi bese uphendula imibuzo ezolandela:

**Kwamfaz' Ongemama – FF Mbatha**

- 1 Awuthunyelwa gundane  
 2 Ngidele konke ngayokwenda,  
 3 Ngidel' ikhaya likababa,  
 4 Ngadel' izihlobo nabangani,  
 5 Ngadela nezinkalo zakithi,  
 6 Uze ungilonde Mveli  
 7 Kwamfaz' ongemama.
- 8 Namuhla ngiqombol' izintaba,  
 9 Ngilibangise kwamfaz'ongemama.  
 10 Noma ngibangwa nezibi,  
 11 Liyophuma lithi  
 12 Ngiyatefa ngiyazenzisa,  
 13 Uze ungigcine Menzi  
 14 Lapho kwanhliziyo ngise.
- 15 Noma ngingayisisulu sikamamezala,  
 16 Noma angangicakafula angichaphe  
 17 Ngelumelayo yodwa,  
 18 Ngiyobekezela ngizithobe.  
 19 Mntanomuntu ngibekezele,  
 20 Ngigcine yonk' eyasemendweni.  
 21 Uz' ube yisihlangu sami Baba,  
 22 Lapho kwamfaz' ongemama.
- 23 Konke kwenzeka samlingo,  
 24 Nokho lolu thando luyithumbil' eyami,  
 25 Lolu thando lungishay' indali emajukujukwini,  
 26 Ngiyazesaba ezakhona izehlo.  
 27 Nokho akusenani  
 28 Sengobekezela ngizithobe,  
 29 Kwamfaz' ongemama.

- 6.2.1 Ngokwale nkondlo kukuphi kwamfazi ongemama? (1)
- 6.2.2 Bhala amagama AMABILI asetshenziswe yimbongi asho uMdali. (2)
- 6.2.3 Bhala uhlobo lokuxhumana olutholakala kule migqa elandelayo:  
 Noma ngingayisisulu sikamamezala,  
 Noma angangicakafula angichaphe. (1)
- 6.2.4 Chaza lezi zimo zokukhuluma ezilandelayo:  
 A Awuthunyelwa gundane. (2)  
 B Noma ngibangwa nezibi. (2)

- 6.2.5 Esitanzeni sesibili caphuna umugqa ochaza ukuthi imbongi ihambe ibanga elide ukuze ifike kwamfaz' ongemama. (1)
- 6.2.6 Tomula imigqa EMIBILI lapho imbongi icela uMdali ukuthi abe ngumvikeli wayo. (2)
- 6.2.7 Tomula imigqa enemvumelwano etholakala esitanzeni sokuqala, bese usho ukuthi iluhlobo luni. (3)
- 6.2.8 Kungani imbongi isebenzise lesi senzاسامuntu esilandelayo esitanzeni sesi-5.  
Lolu thando lungishay' indali emajukujukwini. (2)
- 6.2.9 Ngamaphuzu AMABILI bhala umqondo wale nkondlo. (2)

**AMAMAKI ESIQEPHU D: 35**  
**AMAMAKI ESEWONKE: 70**



# basic education

Department:  
Basic Education  
**REPUBLIC OF SOUTH AFRICA**

## **NATIONAL SENIOR CERTIFICATE**

**IBANGA LE-12**

**ISIZULU ULIMI LOKUQALA LOKWENGEZA (FAL)**

**IPHEPHA LESITHATHU (P3)**

**NOVEMBA 2014**

**IMEMORANDAMU**

**AMAMAKI: 100**

**Le memorandamu inamakhasi ayi-11.**

**QAPHELA:**

- Ngaso sonke isikhathi sebenzisa irubhriki uma umaka umbhalo wokuziqambela (Iphepha lesi-3, ISIQEPHU A).
- Amamaki ukusuka ku: 0–50 ahlukaniwe ngokwamazinga amahlanu ngokwezinkomba.
- Okubonwa ngakho okuqukethwe, ulimi & isitayela, inkomba ngayinye kumazinga amahlanu ihlukaniswe izingxenye ezimbili kuye ngokwabiwa kwamamaki. Kunengxenye engenhla kanye nengezansi.
- Isakhiwo sona asithinteki ekuhlukaniseni ngokwezingxenye. Ayikho ingxenye engenhla noma engezansi.

**AMARUBHRIKHI OKUHLOLA I-ESEYI ULIMI LOKUQALA LOKWENGEZA [AMAMAKI ANGAMA-50]**

Okungabonwa ngakho		Okungavamile	Okunekhono	Okusendimeni	Okuqalisayo	Akwanelisi
<b>OKUQUKETHWE &amp; UHLAKA</b>  (Izimpendolo kanye nemibono) Ukuhlela imibono uyihlelela uhlaka Ukuqonda inhloso, izethameli kanye nesimo  <b>AMAMAKI ANGAMA-30</b>	<b>Ingxenye engenhla</b>	<b>28–30</b>	<b>22–24</b>	<b>16–18</b>	<b>10–12</b>	<b>4–6</b>
		-Impendolo enembayo ngaphezu kobekulindelekile -Imibono ekhaliphile, echukuluza ingqondo kanye nekhombisa ukuvuthwa komqondo -Ihleleke ngobunyoinco kanye nokulandelana (nokuxhumana) kubandakanya isingeniso, umzimba kanye nesiphetho	-Impendolo yakheke kahle -Imibono eshaya emhloveni nehlabahlosile enokuvuthwa komqondo -Ihleleke kahle kakhulu kanye nokulandelana (nokuxhumana) kubandakanya isingeniso, umzimba kanye nesiphetho	-Impendolo eyanelisayo -Imibono inakho ukulandelana nokushaya emhloveni -Ihleleke ngokusendimeni kanye nokulandelana (nokuxhumana) kubandakanya isingeniso, umzimba kanye nesiphetho	-Impendolo ikhombisa ukungahlangani -Imibono engacacile nekungeyona eyokuzisungulela -Kukhona okukhombisa ukuhlela okuncane nokulandelana	-Impendolo enhlanhlathayo -Imibono edidayo nenganembi -Akuzwakali kunokuphindaphinda -Akukho ukuhlela kanye nokulandelana
	<b>Ingxenye engezansi</b>	<b>25–27</b>	<b>19–21</b>	<b>13–15</b>	<b>7–9</b>	<b>0–3</b>
		-Impendolo yinhle kakhulu kepha intula izimpawu ze-eseyi enembayo -Imibono ekhombisa ukuvuthwa komqondo kanye nokukhalipha -Ikhombisa ikhono lokuhlela kanye nokulandelana (nokuxhumana) kubandakanya isingeniso, umzimba kanye nesiphetho	-Impendolo yakheke kahle -Imibono ehambisanayo nendaba nehlabahlosile -Ihleleke kahle kakhulu kanye nokulandelana (nokuxhumana) kubandakanya isingeniso, umzimba kanye nesiphetho	-Impendolo enembayo kodwa intula ukucacisa -Imibono iyalandelana ngokusendimeni futhi iyamukeleka -Kukhona okukhomba ukuhlela kanye nokulandelana (nokuxhumana) kubandakanya isingeniso, umzimba kanye nesiphetho	-Impendolo engashayi emhloveni -Imibono ithanda ukuba nhlakanhlaka futhi iyadida -Ukuhlela kanye nokulandelana akukho	-Ayikho imizamo ekhombisa ukuphendula ngesihloko -Akuhambisani nesihloko futhi akufanelene -Akuqondene nesihloko futhi kuphithene

**AMARUBHRIKHI OKUHLOLA I-ESEYI ULIMI LOKUQALA LOKWENGEZA [AMAMAKI ANGAMA-50] (continued)**

Okungabonwa ngakho		Okungavamile	Okunekhono	Okusendimeni	Okuqalisayo	Akwanelisi
		14–15	11–12	8–9	5–6	0–3
<b>ULIMI, ISITAYELA &amp; UKULUNGISA AMAPHUTHA</b>  Ithoni, irejista, isitayela, ulwazimagama kuyahambisana nenhloso/umthelela kanye nesimo Ukukhethwa kwamagama, ukusetshenziswa kolimi, izimpawu zokuloba, uhlelo, isipelingi  <b>AMAMAKI AYI-15</b>	Ingxenywe engenhla	-Ithoni, irejista, isitayela, ulwazimagama kuhambisana kahle kakhulu nenhloso, izethameli kanye nesimo -Ulimi lukhombisa ukuzethemba, luyancomeka kakhulu -Ithoni ekhomba ukuphoqa kanye namasu obuciko obunembayo -Akunamaphutha sanhlobo ohlelweni kanye nesipelingi -Ikhombise ikhono eliphezulu lokubumba	-Ithoni, irejista, isitayela, ulwazimagama kuhambisana kahle nenhloso, izethameli kanye nesimo -Ulimi lufanelekile kanye nokusetshenziswa kwethoni ngendlela efanelekile -Kukhombisa ukungabi namaphutha ohlelweni kanye nesipelingi -Ibumbeka kahle kakhulu	-Ithoni, irejista, isitayela, ulwazimagama kuhambisana kahle nenhloso, izethameli kanye nesimo -Ukusetshenziswa kolimi ukudlulisa umqondo -Ithoni ifanelekile -Kusetshenziswe amasu obuciko ukukhulisa okuqukethwe	-Ithoni, irejista, isitayela, ulwazimagama kuhambisana ngokungagculisi nenhloso, izethameli kanye nesimo -Ukusetshenziswa kolimi ukudlulisa umqondo akugculisi -Ithoni nephimbo akugculisi -Kusetshenziswe amasu obuciko ngokungagculisi ukukhulisa okuqukethwe	-Ulimi aluqondakali -Ithoni, irejista, isitayela kanye nolwazimagama akuhambisani nenhloso, izethameli kanye nesimo -Ulwazimagama luncane kakhulu okwenza kube lukhuni ukuqonda
		Ingxenywe engezansi	13	10	7	4
<b>ISAKHIWO</b>  Izimpawu zethekisthi, ukuthuthuka kwezigaba kanye nokwakhiwa kwemisho  <b>AMAMAKI AYISI-5</b>		5	4	3	2	0–1
		-Ukuthuthuka kwesihloko okunembayo -Ukucacisa okunembayo -Imisho, izigaba kwakheke kahle kakhulu	-Ukuthuthuka nokugeleza kwendaba -Ukulandelana -Imisho, izigaba kuyalandelana futhi kuxubile	-Ukuthuthuka kwendaba okulindelekile -Imisho, izigaba kwakheke kahle -I-eseyi isenawo umqondo	-Amaphuzu ambalwa azwakalayo -Imisho kanye nezigaba kunamaphutha -I-eseyi isenawo umqondo noma inamaphutha	-Amaphuzu awatholakali -Imisho kanye nezigaba kunamaphutha -I-eseyi ayinamqondo
<b>UKWABIWA KWAMAMAKI</b>		43–50	33–40	23–30	13–20	0–10

**Amakhodi Okuqopha Amamaki Kulesi Sigaba:**

- Q no H : 30
- SK : 15.
- LSP : 05

**Amakhodi angasetshenziswa uma kumakwa**

SP – (dwebela)-isipelingi esingamukelekile.

PH – uphawu lokubhala olungemukelekile.

L – (dwebela)- ulimi olungemukelekile.

// – khombisa isigaba esisha.

NK – inkathi engemukelekile.

'S-I – i-aphostilofi engemukelekile.

GL – amagama awalandelani ngokufanele.

R – irejista.

KM – akwenzi umqondo.

ISIV. – isivumelwano esingavumelani.

AK – akudingekile.

^ – kunegama elingekho.

GN –kunegama elingcono ebelingasetshenziswa.

/ –ukwehlukanisa amagama

() – ukuhlanganisa amagama

PP-kuphindaphindwe amagama/amabinzana.

**OKULINDELEKILE MAYELANA NESAKHIWO SEMIBHALO (ISIQEPHU A)**

- Isingeniso: Siyaheha, siyisigaba esisodwa, singenisa indikimba.
- Umzimba: (i) Izigaba zinemiqondo ezwakalayo nenikezelanayo.  
(ii) Zihleleke kahle /umqondo osekelayo.  
(iii) Umbhalo nombhalo mawuhambelane nenkathi okumele ubhalwe ngayo.
- Isiphetho: (i) Siyisigaba esisodwa.  
(ii) Makuvele ukuthi umbhalo usuyagoqwa noma uyasongwa.  
(iii) Selungavela uvo lombhali ngalokho abhala ngakho okungaba ukuxwayisa /ukweluleka /ukuxolisa.

**OKULINDELEKILE MAYELANA NEZIHLOKO ZEZINDABA (ISIQEPHU A)**

<p><b>1.1 Engizibona Ngiyikho Eminyakeni Emihlanu Ezayo.</b></p> <p>Izimpendolo zingathinta amaphuzu alandelayo:</p> <ul style="list-style-type: none"> <li>• Izifundo azikhethile.</li> <li>• Iphupho analo ngekusasa lakhe.</li> <li>• Ukuqeda kwakhe isikole.</li> <li>• Ukusebenza.</li> <li>• Ukuziqhuba ngokwemfundo.</li> <li>• Ukuphumelelisa iphupho lakhe.</li> </ul> <p>Nokunye okuhambisana nesihloko.</p>	<p><b>1.2 Izindlela Esinganciphisa Ngazo Izingozi Zemigwaqo.</b></p> <p>Izimpendolo zingathinta amaphuzu alandelayo:</p> <ul style="list-style-type: none"> <li>• Ukwehlisa ijubane.</li> <li>• Ukuqina kwemithetho yomgwaqo mayelana nabaphuzile, abangenazo izincwadi zokushayela.</li> <li>• Ukuqinisa imithetho yokujezisa amaphoyisa agwazelwayo.</li> <li>• Ukuboshwa kwabeqa imigwaqo engothelawayeka ngezinyawo.</li> <li>• Ukwakha amabhuloho okuwela abahamba ngezinyawo.</li> <li>• Ukwakha imigwaqo esesimweni esihle.</li> <li>• Ukuvala imigodi eba semigwaqweni.</li> <li>• Ukuhlonishwa kwezimpawu zomgwaqo ngabahamba ngezinyawo nabashayeli.</li> <li>• Ukuboshwa kwabagcwalisa izithuthi ngokweqile.</li> <li>• Ukuthuthukiswa kwezimo zokusebenza zabashayeli abashayela amabanga amade.</li> <li>• Abantu abadayisa emgwaqweni.</li> <li>• Ukufundisa izingane ezikoleni ngezokuphepha emgwaqweni.</li> </ul> <p>Nokunye okuhambisana nesihloko.</p>	<p><b>1.3 Uhlobo Lomculo Engiluthandayo.</b></p> <p>Izimpendolo zingathinta amaphuzu alandelayo:</p> <ul style="list-style-type: none"> <li>• Uhlobo lomculo umfundi aluthandayo.</li> <li>• Isizathu sokuluthanda lolo hlobo.</li> <li>• Abaculi balo.</li> <li>• Imvelaphi yalo.</li> <li>• Isilomo esaziyo esicula lolo hlobo lomculo.</li> <li>• Ulimi olusetshenziswa kulolu hlobo lomculo nemizwa oluyichukuluzayo.</li> <li>• Inggqephu ehambisana nalo.</li> </ul> <p>Nokunye okuhambisana nesihloko.</p>
<p><b>1.4 Umbono Wami Ngokugqokwa Komfaniswano (Uniform) Ezikoleni.</b></p> <p>Izimpendolo zingathinta amaphuzu alandelayo:</p> <p><b>Abavumayo:</b></p> <ul style="list-style-type: none"> <li>• Ubuhle bomfaniswano: <ul style="list-style-type: none"> <li>✓ Wenza abafundi babukeke kahle.</li> <li>✓ Unika abafundi isithunzi sokuhlonipheka.</li> <li>✓ Ubeka abafundi ezingeni elilinganayo.</li> </ul> </li> <li>• <b>Abaphikayo:</b> <ul style="list-style-type: none"> <li>✓ Ezinye izinhlobo zomfaniswano ziyabiza.</li> <li>✓ Umfaniswano awenzi umehluko empumelelweni yomfundi.</li> <li>✓ Ukufaka umfaniswano akubalungiseleli abafundi impilo ngaphandle kwesikole ngoba emsebenzini eminingi izisebenzi abawugqoki umfaniswano.</li> </ul> </li> </ul>	<p><b>1.5 Abafundi Bayinika Isihloko Indaba Yabo.</b></p> <p>Izimpendolo zingathinta amaphuzu alandelayo:</p> <ul style="list-style-type: none"> <li>• Ukudlwengulwa kwabesifazane nezingane.</li> <li>• Ukubulala ngesihluku.</li> <li>• Ukuntshontsha.</li> <li>• Ubugebengu.</li> <li>• Ukusetshenziswa kwezidakamizwa.</li> <li>• Ukukhwananisa.</li> <li>• Ukushushumbiswa kwabantu nezitho zomzimba.</li> <li>• Ukuhlukumeza abantu abadala.</li> <li>• Ukuziphatha kwezisebenzi zikaHulumeni.</li> </ul> <p>Nokunye okuhambisana nesihloko umfundi asinike indaba.</p>	<p><b>1.6.1 Isithombe:</b></p> <p>Izimpendolo zingathinta amaphuzu alandelayo:</p> <ul style="list-style-type: none"> <li>• Ubuhle nobubi bokufunda ezikoleni ezixube izinhlanga.</li> <li>• Ukuhloniphana ngokobulili.</li> <li>• Ukufunda amasiko nemvelaphi yezinye izinhlanga.</li> <li>• Kufunda izinkolelo nezinkolelo zezinye izinhlanga.</li> <li>• Izinselelo zokufunda ezikoleni ezixube izinhlanga.</li> </ul> <p><b>QAPHELA:</b> Amaphuzu angehluka kuye ngesihloko esibhalwe ngumfundi.</p>

<p><b>1.6.2 Isithombe:</b> Amaphuzu angathinta okulandelayo:</p> <ul style="list-style-type: none"> <li>• Igama lesiqwi.</li> <li>• Abantu owawuhamba nabo mhla uvakashela isiqwi.</li> <li>• Inhloso yohambo.</li> <li>• Okutholakala nokwenziwa esiqwini.</li> <li>• Ukubaluleka kokulondolozwa kwemvelo.</li> </ul> <p><b>QAPHELA:</b> Amaphuzu angehluka kuye ngesihloko esibhalwe ngumfundi.</p>	<p><b>1.6.3 Isithombe:</b> Amaphuzu angathinta okulandelayo:</p> <ul style="list-style-type: none"> <li>• Impilo yasemaphandleni.</li> <li>• Ukulethwa kwentuthuko.</li> <li>• Amasimu nokudliwayo.</li> <li>• Imisebenzi ehlukeneyo yasemaphandleni.</li> <li>• Inqalasisizinda.</li> </ul> <p><b>QAPHELA:</b> Amaphuzu angehluka kuye ngesihloko esibhalwe ngumfundi.</p>	
---	---	--

**ISIQEPHU: B****AMARUBHRIKHI OKUHLOLA UMBHALO OMUDE ODLULISA UMYALEZO ULIMI LOKUQALA LOKWENGEZA [AMAMAKI ANGAMA-30]**

<b>Okungabonwa ngakho</b>	<b>Okungavamile</b>	<b>Okunekhono</b>	<b>Okusendimeni</b>	<b>Okuqalisayo</b>	<b>Akwanelisi</b>
<b>OKUQUKETHWE NESAKHIWO.</b> Impendulo kanye nemibono Ukuhlela imibono. Inhloso, izethameli, izakhiwo nezimiso kanye nesimo  <b>AMAMAKI AYI-18</b>	<b>15–18</b> -Impendulo enembayo ngaphezu kobekulindelekile -Amasu akhaliphile kanye nokuvuthwa komqondo -Ulwazi olubanzi lwezimpawu zohlobo lombhalo -Umbhalo unamathele esihlokweni -Amasu akhombisa ukuthelelana kanye nokulandelana -Acacisa ngokusobala kanye nokusekela isihloko -Isakhiwo esifanelekile necacile	<b>11–14</b> -Impendulo enhle kakhulu ekhombisa ulwazi lwezimpawu zohlobo lombhalo -Inamathele esihlokweni -Akunamaphutha -Ukulandelana kokuqukethwe nemibono, kuchazwe kahle futhi kusekela isihloko -Isakhiwo esifanele enamaphushana	<b>8–10</b> -Impendulo esendimeni ekhombisa ulwazi lwezimpawu zohlobo lombhalo -Ayinamathele kahle esihlokweni – inamaphutha ambalwa -Ukulandelana kwemibono, okuqukethwe kufanelekile -Ukuchaza okumbalwa kusekela isihloko -Isakhiwo esifanelekile kodwa kunamaphutha ambalwa	<b>5–7</b> -Impendulo esezingeni eliyisisekelo ekhombisa ulwazi lwezimpawu zohlobo lombhalo -Ukunamathela kuyabonakala kodwa kunamaphutha -Ukulandelana kwamaphuzu nokuqukethwe kubuye kungabonakali -Ukuchaza okumbalwa kusekela isihloko -Usebenzise ngokunganele imithetho yesakhiwo -Kukhona okumbalwa okubalulekile	<b>0–4</b> -Impendulo ikhombisa ukungabi nalo ulwazi lwezimpawu zohlobo lombhalo -Umbhalo uyanhlanhlatha kunamaphutha amaningi -Imibono ayilandelani nhlobo -Ukuchaza okumbalwa okusekela isihloko -Akasebenzisanga nhlobo imithetho yesakhiwo.
<b>ULIMI, ISITAYELA KANYE NOKULUNGISA AMAPHUTHA</b>  Ithoni, irejista, isitayela, inhloso/umthelela, izethameli kanye nesimo Ukusetshenziswa kolimi kanye nezimiso Ukukhethwa kwamagama Izimpawu zokuloba kanye nesipelingi  <b>AMAMAKI AYI-12</b>	<b>10–12</b> -Ithoni, irejista, isitayela, ulwazimagama kuhambisana kahle kakhulu nenhloso, izethameli kanye nesimo -Uhlelo lufanelekile futhi lwakheke kahle kakhulu -Akunamaphutha nhlobo	<b>8–9</b> -Ithoni, irejista, isitayela, ulwazimagama kuhambisana kahle nenhloso, izethameli kanye nesimo -Uhlelo lufanelekile futhi lwakheke kahle -Ulwazimagama oluhle -Akunamaphutha	<b>6–7</b> -Ithoni, irejista, isitayela, ulwazimagama kuyahambisana nenhloso, izethameli kanye nesimo -Kunamaphutha ambalwa -Ulwazimagama olusendimeni -Amaphutha awawuphazamisi umqondo	<b>4–5</b> -Ithoni, irejista, isitayela, ulwazimagama kunokungahambisani nenhloso, izethameli kanye nesimo -Uhlelo olungafanelekile olunamaphutha amaningi -Ulwazimagama olunganele -Umqondo wombhalo ufiphele	<b>0–3</b> -Ithoni, irejista, isitayela kanye nolwazimagama akuhambisani nenhloso, izethameli kanye nesimo -Kugcwele amaphutha futhi kuyadida -Ulwazimagama aluhambisani nenhloso -Umbhalo uyanhlanhlatha kakhulu
<b>UKWABIWA KWAMAMAKI</b>	<b>25–30</b>	<b>19–23</b>	<b>14–17</b>	<b>9–12</b>	<b>0–7</b>

**Amakhodi Okuqopha Amamaki Kulesi Sigaba:**

- Q noS : 18
- LSP : 12

**OKULINDELEKILE****2.1 INCWADI YOBUNGANI:[30]**

- Ikheli elilodwa.
- Ikheli lobhalayo lihamba nosuku. Isib.(16 kuNdasa 2014/ 16 Mashi 2014 / 03.16.2014/ 16/03/2014)
- Obhalelwayo makabingelelwe sakukhuluma: Thandi/Sipho.
- Isigaba sokuqala singaqalisa kanje:Ngiyethemba.....,Ngiyaxolisa....njalo-njalo
- Valelisa ukhombise ukumazi lowo ombhalelayo. Isib.
- Yimina umngane wakho  
uNjabulo  
Okulindelekile: (i) Isingeniso  
(ii) Umzimba (ungaba yizigaba ezimbili)  
(iii) Isiphetho (makuvele ukuqoqwa kwendaba)  
(iv) Inani lamagama kumele lihambisane nemiyalelo enikeziwe.

**2.2 Umlando Ngomufi:**

- Isihloko.
- Iminingwane ngomufi engathinta lawa maphuzu alandelayo:
  - ✓ Umufi uzalwe nini washona nini.
  - ✓ Imvelaphi yakhe.
  - ✓ Imfuno.
  - ✓ Amagalelo akhe emphakathini.
  - ✓ Abantu abashiyile.
  - ✓ Umyalezo wothando omphelezelayo/izithakazelo.

**2.3 I-Athikhili Yephephandaba:**

- Isihloko masibhalwe ngokugqamile.
- Akuvele igama lombhali.
- Igama lenhlangano/ umuntu owenze ucwaningo.
- Amaphuzu avezwa ucwaningo.
- Izindlela abafundi abaphazamiseka ngazo ngokusebenzisa umakhalekhukhwini.

**2.4. Inkulumo-mpendulwano: [30]**

- Isihloko.
- Isingeniso.
- Abalingiswa bangabi ngaphezu kwababili.
- Inkulumo mayenyuke iphinde yehle.
- Abavumelane ekugcineni.

**ISIQEPHU C:****AMARUBHRIKHI OKUHLOLA UMBHALO OMUFUSHANE ODLULISA UMYALEZO ULIMI LOKUQALA LOKWENGEZA [AMAMAKI ANGAMA-20]**

<b>Okungabonwa ngakho</b>	<b>Okungavamile</b>	<b>Okunekhono</b>	<b>Okusendimeni</b>	<b>Okuqalisayo</b>	<b>Akwanelisi</b>
<b>OKUQUKETHWE NESAKHIWO.</b>  Impendulo nemibono Ukuhlela imibono Izimpawu/izimiso kanye nesimo  <b>AMAMAKI AYI-12</b>	<b>10–12</b>  -Impendulo enembayo ngaphezu kobekulindelekile -Amasu akhaliphile kanye nokuvuthwa komqondo -Ulwazi olubanzi lwezimpawu zohlobo lombhalo -Umbhalo unamathele esihlokweni -Amasu akhombisa ukuthelelana kanye nokulandelana -Acacisa ngokusobala kanye nokusekela isihloko -Isakhiwo esifanelekile necacile	<b>8–9</b>  -Impendulo enhle kakhulu ekhombisa ulwazi lwezimpawu zohlobo lombhalo -Inamathele esihlokweni -Akunamaphutha -Ukulandelana kokuqukethwe nemibono, kuchazwe kahle futhi kusekela isihloko -Isakhiwo esifanele enamaphushana	<b>6–7</b>  -Impendulo esendimeni ekhombisa ulwazi lwezimpawu zohlobo lombhalo -Ayinamathele kahle esihlokweni – inamaphutha ambalwa -Ukulandelana kwemibono okuqukethwe kufanelekile -Ukuchaza okumbalwa kusekela isihloko -Isakhiwo esifanelekile kodwa kunamaphutha ambalwa	<b>4–5</b>  -Impendulo esezingeni eliyisisekelo ekhombisa ulwazi lwezimpawu zohlobo lombhalo -Ukunamathela kuyabonakala kodwa kunamaphutha -Ukulandelana kwamaphuzu okuqukethwe kubuye kungabonakali -Ukuchaza okumbalwa kusekela isihloko -Usebenzise ngokunganele imithetho yesakhiwo. -Kukhona okumbalwa okubalulekile	<b>0–3</b>  -Impendulo ikhombisa ukungabi nalo ulwazi lwezimpawu zohlobo lombhalo -Umbhalo uyanhlanhlatha kunamaphutha amaningi -Imibono ayilandelani nhlobo -Ukuchaza okumbalwa okusekela isihloko -Akasebenzisanga nhlobo imithetho yesakhiwo.
<b>ULIMI, ISITAYELA KANYE NOKULUNGISA AMAPHUTHA</b>  Ithoni, irejista, isitayela, inhloso/umthelela, izethameli kanye nesimo Ukuqokobisa kolimi kanye nezimiso Ukukhethwa kwamagama Izimpawu zokuloba kanye nesipelingi  <b>AMAMAKI AYISI-8</b>	<b>7–8</b>  -Ithoni, irejista, isitayela, ulwazimagama kuhambisana kahle kakhulu nenhloso, izethameli kanye nesimo -Uhlelo lufanelekile futhi lwakheke kahle kakhulu -Akunamaphutha nhlobo	<b>5–6</b>  -Ithoni, irejista, isitayela, ulwazimagama kuhambisana kahle nenhloso, izethameli kanye nesimo -Uhlelo lufanelekile futhi lwakheke kahle -Ulwazimagama oluhle -Akunamaphutha	<b>4</b>  -Ithoni, irejista, isitayela, ulwazimagama kuyahambisana nenhloso, izethameli kanye nesimo -Kunamaphutha ambalwa -Ulwazimagama olusendimeni -Amaphutha awawuphazamisi umqondo	<b>3</b>  -Ithoni, irejista, isitayela, ulwazimagama kunokungahambisani nenhloso, izethameli kanye nesimo -Uhlelo olungafanelekile olunamaphutha amaningi -Ulwazimagama olunganele -Umqondo ufiphele	<b>0–2</b>  -Ithoni, irejista, isitayela kanye nolwazimagama akuhambisani nenhloso, izethameli kanye nesimo -Kugcwele amaphutha futhi kuyadida -Ulwazimagama aluhambisani nenhloso -Umqondo wombhalo uyanhlanhlatha kakhulu
<b>UKWABIWA KWAMAMAKI</b>	<b>17–20</b>	<b>13–15</b>	<b>10–11</b>	<b>7–8</b>	<b>0–5</b>

## **OKULINDELEKILE**

### **Amakhodi Okuqopha Amamaki Kulesi Sigaba:**

- Q noS : 12
- LSP : 08

## **OKULINDELEKILE**

### **3.1 Isikhangisi:**

- Masibhalwe ebhokisini.
- Kusetshenziswa ulimi oluhehayo
- Igama lebhizinisi malivele.
- Usizo olutholakala ebhizinisini.
- Indawo elitholakala kuyo ibhizinisi.
- Inombolo yocingo neyesikhahlamezi.
- I-imeyili yebhizinisi engasetshenziswa uma kunemibuzo.
- Igama lomuntu ongathintwa uma umuntu efuna usizo.

### **3.2 Idayari:**

- Isihloko.
- Akuvele ilanga nosuku
- Akuvele okuzobe kwenziwa usuku nosuku.
- Ayibe senkathini ezayo.

### **3.3 Imiyalelo:**

- Izithako.
- Izilinganiso.
- Indlela Yokwenza.
- Kwanela abangaki.
- Kungadliwa nani.

### **OKULINDELEKILE MAYELANA NOBUDE NOBUFUSHANE BEMIBHALO**

- Uma amagama eqe noma ehle esukela ku 1–5 kuyokwamukeleka.
- Uma amagama eqe noma ehle esukela ku 6–10 kuyosuswa imaki elilodwa.
- Uma amagama eqe noma ehle esukela ku 11–15 kuyosuswa amamaki ama–2.
- Uma amagama eqe noma ehle esukela ku 16 kuya ku–20 kuyosuswa amamaki ama–3.

Akuvumelekile ukukopisha leli phepha



# basic education

Department:  
Basic Education  
**REPUBLIC OF SOUTH AFRICA**

## **NATIONAL SENIOR CERTIFICATE**

**IBANGA LE-12**

**ISIZULU ULIMI LOKUQALA LOKWENGEZA (FAL)**

**IPHEPHA LESITHATHU (P3)**

**NOVEMBA 2014**

**AMAMAKI: 100**

**ISIKHATHI: amahora ama-2½**

**Leli phepha linamakhasi ayisi-6.**

**IMIYALELO KWABAHLOLWAYO:**

1. Leli phepha lehlukaniwe iziqephu EZINTATHU:  

ISIQEPHU A: Indaba	(50)
ISIQEPHU B: Imibhalo emide edlulisa imiyalezo	(30)
ISIQEPHU C: Imibhalo emifishane edlulisa imiyalezo	(20)
2. Phendula umbuzo OWODWA esiqeshini NGASINYE.
3. Bhala usebenzise ulimi ohlolwa ngalo.
4. Qala umbuzo ngaMUNYE ekhasini ELISHA.
5. Bhala uhlaka (lungaba imephu/idayagramu, ishadi lemicabango, amagama asemqoka njll). Fundisisa bese ulungisa amaphutha emsebenzini wakho.
6. Qiniseka ukuthi ubhala uhlaka ngaphambi kokubhala indaba yakho.
7. Uyayalwa ukuba usebenzise isikhathi sokubhala ngale ndlela elandelayo:  

Amaminithi angama-80: ISIQEPHU A
Amaminithi angama-40: ISIQEPHU B
Amaminithi angama-30: ISIQEPHU C
8. Ungazishintshi izinombolo zemibuzo. Zibhale njengoba zinjalo ephepheni lemibuzo.
9. Bhala izihlokwana ezifanele lapho zidingeka khona.
10. Ungazibali izihloko nezihlokwana lapho usubala inani lamagama omsebenzi wakho.
11. Bhala ngobunono nangesandla esifundekayo.

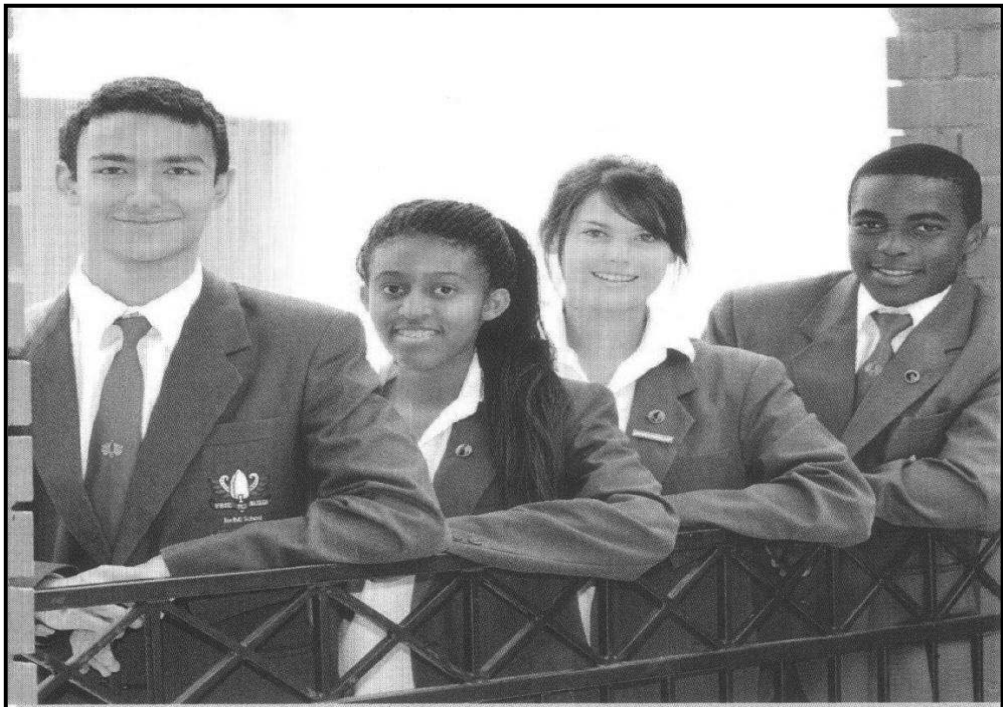
**ISIQEPHU A: IZINDABA****UMBUZO 1**

Khetha isihloko ESISODWA kwezilandelayo ubhale ngaso indaba ibe ngamagama ayi-190 kuya kwangama-240.

**QAPHELA:** Bhala uhlaka lwendaba yakho lube sekhasini lwalo lodwa.

- 1.1 Engzibona Ngiyikho Eminyakeni Emihlanu Ezayo. [50]
- 1.2 Izinga lezingozi emigwaqweni liphezulu kakhulu. Bhala indaba ngesihloko esithi:  
Izindlela Esinganciphisa Ngazo Izingozi Zemigwaqo. [50]
- 1.3 Umculo ubalulekile kubantu abasha. Bhala indaba ngesihloko esithi:  
Uhlobo Lomculo Engiluthandayo. [50]
- 1.4 Umbono Wami Ngokugqokwa Komfaniswano ('uniform') Ezikoleni. [50]
- 1.5 Ziningi izinto ezenzekayo ezikhombisa ukungaziphathi kahle kwabantu. Bhala indaba uveze ezinye zalezi zinto. Nika indaba yakho isihloko. [50]
- 1.6 Khetha isithombe ESISODWA kulezi ezilandelayo bese ubhala indaba ngaso. Nika indaba yakho isihloko esifanele:

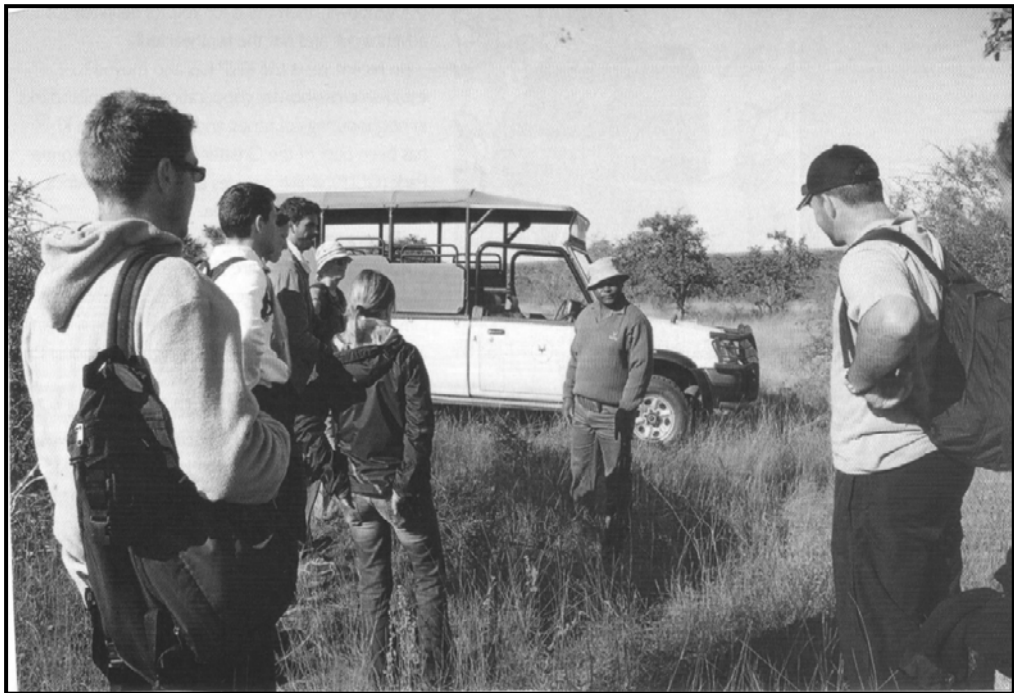
1.6.1



[Icashunwe ku*Destiny Magazine*, Okthoba 2013]

[50]

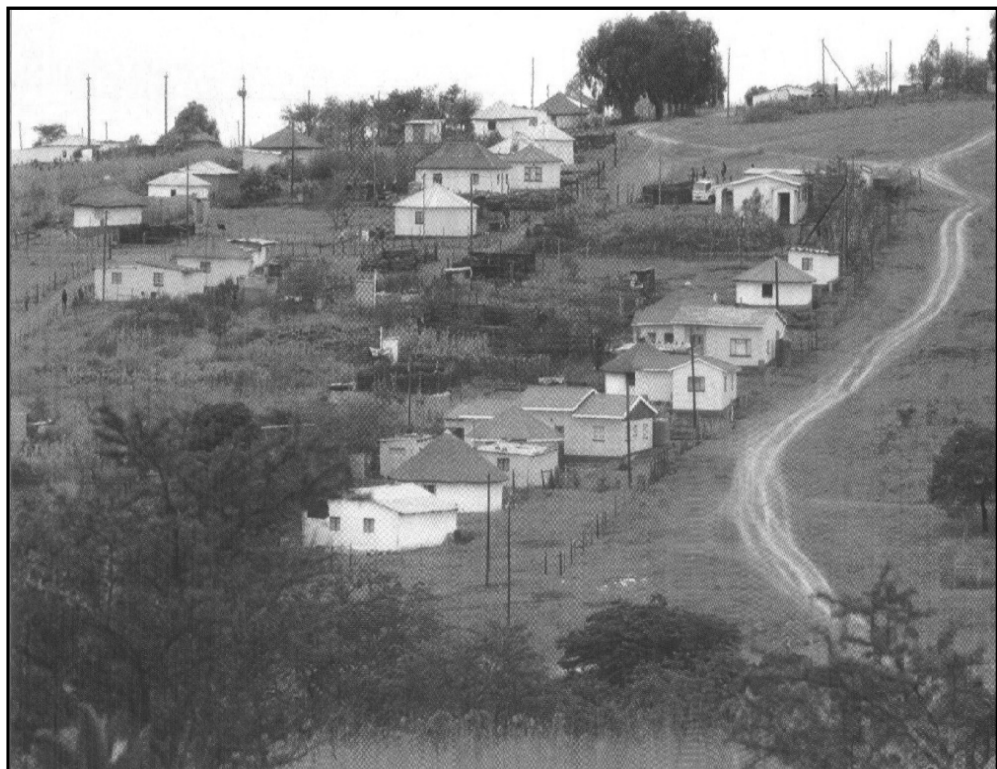
1.6.2



[Icashunwe ku*Destiny Magazine*, Okthoba 2013]

[50]

1.6.3



[Icashunwe ku-[www.googleimages.com](http://www.googleimages.com)]

[50]

**AMAMAKI ESIQEPHU A:**

**50**

**ISIQEPHU B: IMIBHALO EMIDE EDLULISA IMIYALEZO****UMBUZO 2**

Khetha isihloko ESISODWA ubhale ngaso kube ngamagama angama-80 kuya kwayi-100.

**2.1 Incwadi Yobungani**

Abazali bomngani wakho bamthengele imoto yohlobo oluphambili. Mbhalele incwadi umbongele uphinde umtshela ukuthi ayiphathe kahle imoto yakhe. [30]

**2.2 Umlando Ngomufi**

Umfowenu omdala ushone ngokukhulu ukuzuma. Umndeni ukucele ukuthi ubhale umlando wakhe. Bhala umlando ngomufi ozowufunda ngosuku lomngcwabo. [30]

**2.3 I-Athikhili Yephephandaba**

Bhala i-athikhili yephephandaba ngesihloko esithi:

Ucwaningo Luveza Ukuthi Umakhalekhukhwini Uyisiphazamiso Kubafundi. [30]

**2.4 Inkulumo-mpendulwano/Ingxoxo**

Ubaba wakho ufuna uqhubeke nezifundo zakho eNyuvesi, wena ubona ukuthi ukufunda kuzokuchithela isikhathi ngoba unekhono/ithalente lokudlala ibhola lezinyawo. Bhala ingxoxo phakathi kwakho nobaba wakho umbonise ukuthi kungakuhle akuvumele uye kodlala ibhola elikhokhelayo. [30]

**AMAMAKI ESIQEPHU B: 30**

**ISIQEPHU C: IMIBHALO EMIFISHANE EDLULISA IMIYALEZO****UMBUZO 3**

Khetha isihloko ESISODWA ubhale ngaso kube ngamagama angama-60 kuya kwangama-80.

**3.1 Isikhangisi**

Uvule indawo yokulungisa izinwele nezinzipho. Bhala isikhangisi ozoheha ngaso amakhasimende.

**[20]****3.2 Idayari**

Umndeni uhlele ukuthi nivakashele eKapa izinsuku eziyisi-5 ngamaholide kaDisemba. Bhala idayari uveze enihlele ukukwenza ngalezi zinsuku ezinhlanu enizozihlala khona.

**[20]****3.3 Imiyalelo/Iresiphi**

Umalumekazi wakho kade enivakashele, upheke isitshulu ('stew') esimnandi senyama yenkukhu. Ukucele ukuthi umfundise ukuthi usipheke kanjani. Bhala imiyalelo/iresiphi oyisebenzisile ukusipheka.

**[20]****AMAMAKI ESIQEPHU C:  
AMAMAKI ESEWONKE****20  
100**