

TWELFTH NIGHT

Show information

This document contains detailed information about Twelfth Night, describing what you should expect when attending.

This includes information about the performance space, the themes of the show, lighting and sound, content warnings, and further access information.

Please note that as the show is still developing in the rehearsal room, this information is not yet complete and as soon as possible.

by discussing the content of the show, the below information contains descriptions of what happens in the performance.



**If you have any questions, please do not hesitate to contact the
National Youth Theatre Box office
Email: boxoffice@nyt.org.guk**

Contents

Page 3 - About the performance space

Page 4 - Accessing the theatre

Page 5 - About the facilities

Page 6 - About the performers

Page 7 - About the performance

Page 8 - Content information & lighting, sound effects and staging

Page 9 - Information about show content, themes and staging with timings (Act 1)

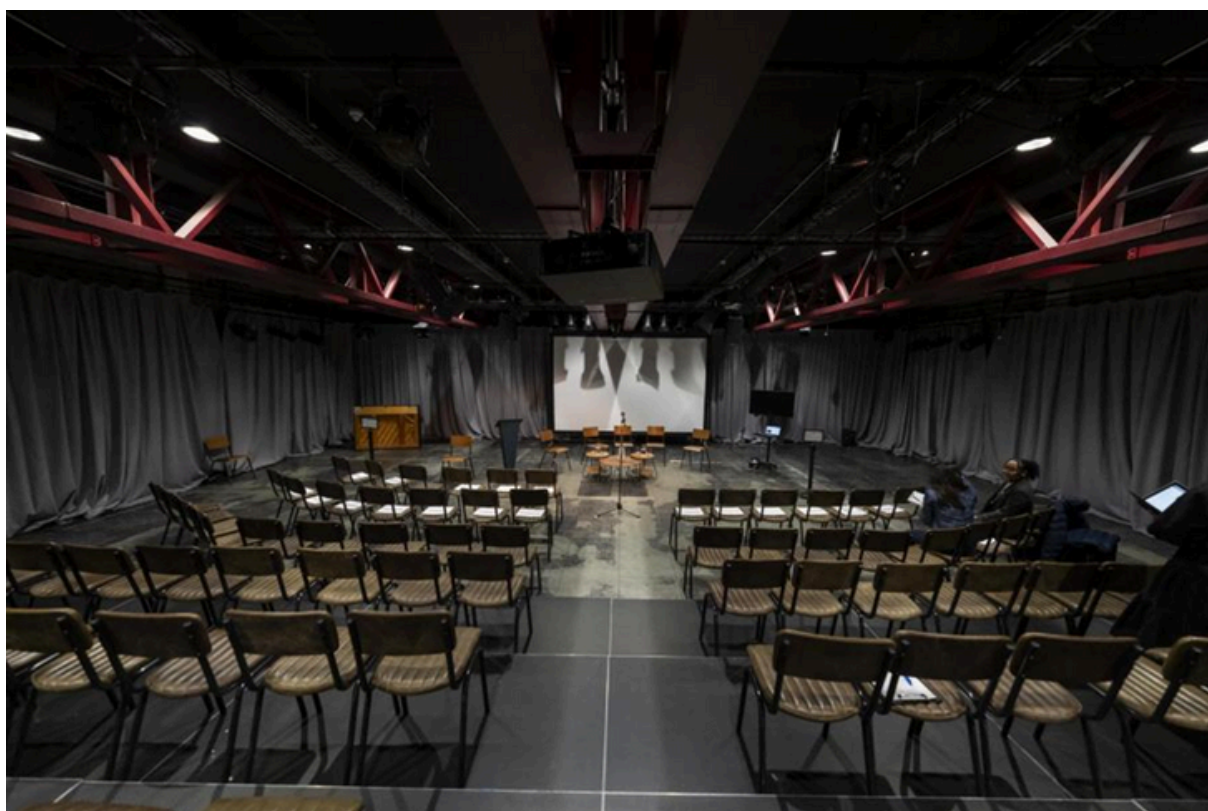
Page 10 - Information about show content, themes and staging with timings (ACT 2)

Pages 11 – 15 - Show synopsis

PERFORMANCE SPACE

The show will take place at The Workshop Theatre, 443-445 Holloway Road, London N7 6LW.

An image of the stage and an image of the seating layout are below. The maximum number of people in the theatre is 110.



ACCESSING THE THEATRE

This production takes place in our Workshop Theatre at National Youth Theatre, 443-445 Holloway Road, London, N7 6LW. Access to the Workshop Theatre is depicted below. After collecting your tickets at reception you will travel up the stairs, past the toilets and green room area to the door headed 'theatre' with a large neon red sign.

- Our building is accessible to wheelchairs users including lift access across all five floors and every rehearsal space and meeting room.
- Our Workshop Theatre and new rehearsal rooms and meeting spaces have hearing induction loops.
- The building has a Changing Places facility and three other disabled toilet facilities and accessible showers across two floors for use by our visitors and the public.
- There are blue badge parking bays near by on Holloway Road.
- NYT ushers will be on hand to help you - they wear black t-shirts and a NYT Lanyard

Download a map to our building here you would like to see a route to our building, follow [here](#)

Download a map of the Grounds and First Floors of our building [here](#)

FACILITIES

Toilets



Disabled toilet changing space
(Adult changing surface, hoist, privacy screen, support rails, emergency cord)



Disabled toilet and baby changing
(Baby changing, shower, support rails, emergency cord)



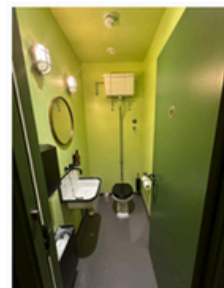
Disabled cubicle
(Support rail, emergency cord)



Single cubicle



Single cubicle



Single cubicle

Assistance dogs

Assistance dogs are welcome. If you are planning a visit with an Assistance Dog, please let us know in advance which performance you will be attending by emailing info@nyt.org.uk

Access for All

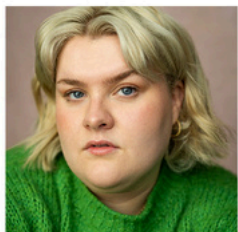
For full information about National Youth Theatre's Access Measures, please visit the Access page on our website here:
<https://www.nyt.org.uk/about-us/accessibility/>

The Performers

This is the NYT REP Company who will be performing in the piece. There are 18 actors in the Company. Some of them will be playing multiple characters within the show.



Selorm Adonu



Stella Blakeley



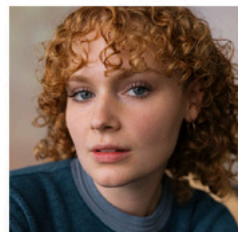
Emily Casey



Talitha Christina



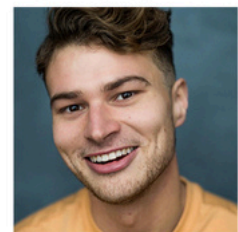
Luc de Freitas



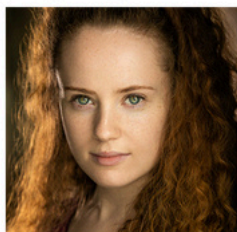
Megan Keaveny



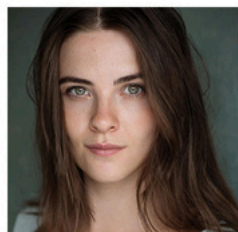
Tyler Kinghorn



Paddy Lintin



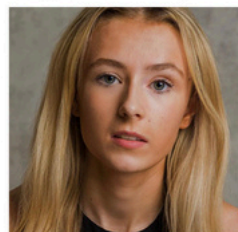
Holly Masters



Laura Masters



David Olaniregun



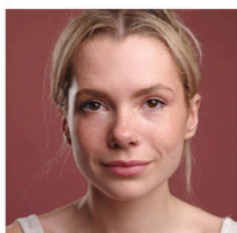
Freya Catherine Purdie



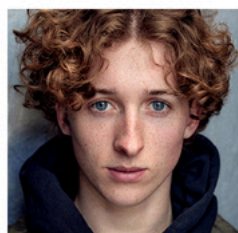
Daniel Regan



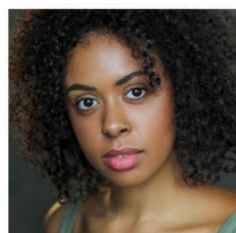
Dominic Semwanga



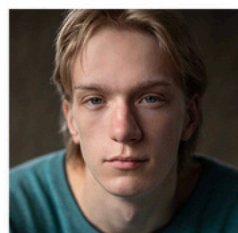
Cathy Sole



Ruari Spooner



Ruby Ward



Alfie Wickham

About the performance

Twelfth Night is a live performance taking place in The Workshop Theatre.

The show lasts for approximately 2 hours, 15 minutes with 1 interval.

More detail on running time of the first and second act will be available after 29 November.

Shakespeare's hilarious and heartbreaking classic is adapted for the NYT REP Company by former Artistic director of the Gate Theatre Ellen McDougall.

The Director's name is Meghan Doyle,

Everyone is welcome at this performance, and we take a relaxed approach to movement and noise in the audience. A Chill Out space will be available for the audience at every performance of Twelfth Night. You can make use of this space if you need to take a break from the performance.

Latecomers are admitted, and you are free to leave the performance space and come back in at any time. Ear defenders and ear plugs will be available for audiences to use during the performance.

The performance on **Wednesday 11 December** at 7pm will be captioned in English.

Content Information

- Frequent references to and depictions of alcohol use.
- References to and depictions of grief and mourning.
- References to misogyny.
- References to and depictions of bullying and cruelty.
- Depiction of fighting.

Lighting, Sound Effects and Staging

- Front of House area installation.

- Full size real Christmas trees adorn the space (2x 10ft, 3x 8ft, 1x 6ft and 3x 4ft trees) and may drop pine needles throughout the performance.

- Loud sounds and live music; the onstage band will consist of 2x electric acoustic guitars, a drum kit and miscellaneous percussion instruments, a cello, a flute, an accordion and a bass guitar).

This will be supplemented by pre-corded sounds and sound effects