

# STORYFEST

## Show information

This document contains detailed information about the productions in our StoryFest Festival, describing what you should expect when attending the show.



This includes information about the performance space, the themes of the show, lighting and sound, content warnings, and further access information.

As this show is a work in progress this document will be updated as the show develops.

By discussing the content of the show, the below information contains descriptions of what happens in the performance.

**If you have any questions, please do not hesitate to contact the National Youth Theatre Box office**

**Email: [boxoffice@nyt.org.uk](mailto:boxoffice@nyt.org.uk) Phone: 020 3696 7066**

# CONTENTS

**Page 3** - About the performance space

**Page 4** - Accessing the theatre

**Page 5** - Chill out space

**Page 6-9** - About the facilities

**Page 11** - Show information about F\*cking White Boys

**Page 12** - Show information about The Flip side

**Page 13** - Show information about THUNDER THIGHS

**Page 14** - Show information about Bin Girl

**Page 16** - Show information about Alien Breakdown Play

**Page 17** - Show information about Sunday (Someday)

**Page 18** - Show information about BOSH

**Page 19** - Show information about BUTCH

**Page 20** - Show information about The Boy in the Bed

**Page 21** - Show information about Indigo

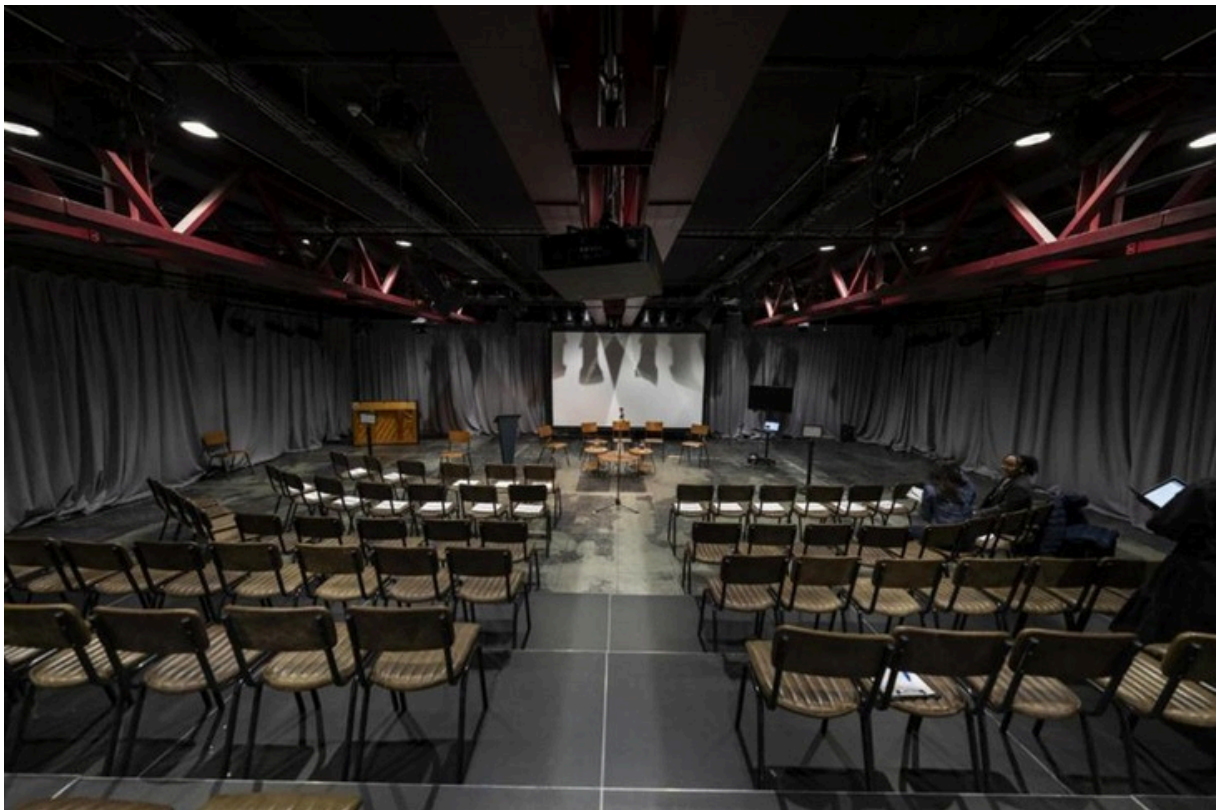
**Page 22** - Show information about StoryFuture

# PERFORMANCE SPACE

The show will take place at The Workshop Theatre, 443-445 Holloway Road, London N7 6LW.

The maximum number of people in the theatre is 110.

Everyone is welcome at this performance, and we take a relaxed approach to movement and noise in the audience. Latecomers are admitted, and you are free to leave the performance space and come back in at any time

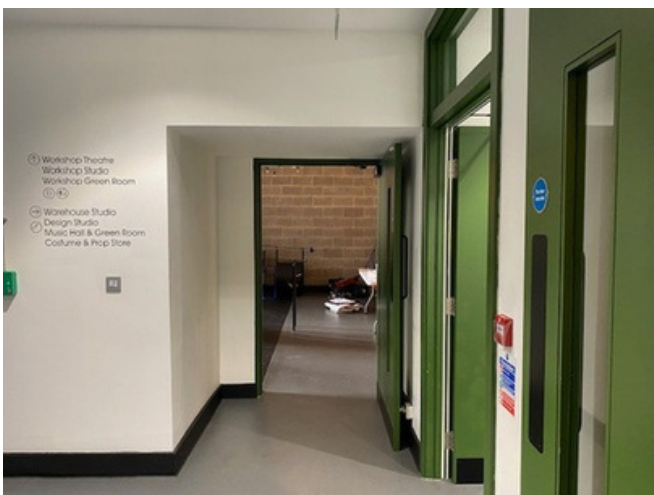


# ACCESSING THE THEATRE

This production takes place at the National Youth Theatre, in our Workshop Theatre. When you arrive, you will be asked to show your E-Ticket at Reception. Once you've shown your ticket, use the stairs or take the lift.



Head through to the Green Room space outside the Theatre. The theatre entrance has a red neon sign above it.



# CHILL OUT SPACE

There will be a chill out space for each performance. You can use this space in any way that works for you. You can make noise in this space or take some quiet time.

You can be in this space for as long as you want and come back into the theatre when you're ready. This is a shared space, open for every performance, before and during the show. You can eat and drink in this space.

Ear defenders and ear plugs are available to pick up at the bar if you would like some. If you need any more help or support please speak to our Venues Team. You can find them in our building or you can contact us over email on [boxoffice@nyt.org.uk](mailto:boxoffice@nyt.org.uk) and by phone 020 3696 7066.



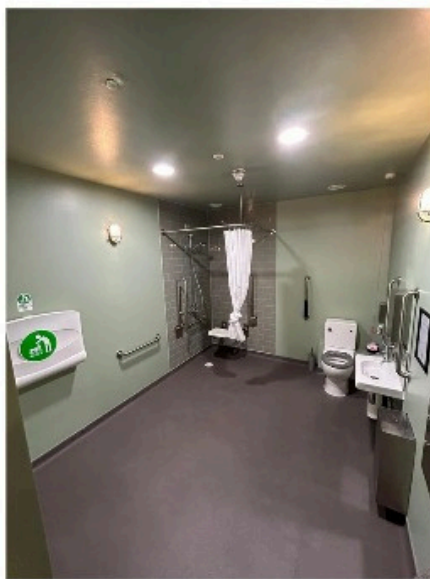
# THEATRE FACILITIES

## Toilets

When entering the green room outside the theatre, the toilets are on the right. There are a range of single cubicles available for audience members of any gender, including a Changing Places Toilet.



**Changing Places Toilet**  
(Adult changing surface, hoist, privacy screen, support rails, emergency cord)



**Toilet with Baby changing, shower with seat, support rails, emergency cord**



**Toilet with Support rail and emergency cord**



**Single cubicle**

## Wheelchair Access

NYT's Theatre is wheelchair accessible. There is a lift from reception to the upper ground floor of the building.

## Blue Badge Parking

There are blue badge parking bays nearby on Holloway Road.

# THEATRE FACILITIES

## Bar

We have a bar area selling snacks and drinks located opposite the theatre. This area can get quite busy during show times with music playing in the background.



Ear defenders and ear plugs are available to pick up from here.

# THEATRE FACILITIES

## Opening times

### Box Office opening hours

- Weekdays: 10:00 AM – 6:00 PM, or until 30 minutes before performances on show days.
- Weekends: 10:00 AM – 6:00 PM, or until 30 minutes before performances on show days.
- Closed: Sundays and Bank Holidays.

### Bar opening hours

The Bar opens 1 hour before the performance begins

### Theatre opening hours

Doors to the theatre will open approximately 15 minutes before the performance begins

# THEATRE FACILITIES

## Assistance Dogs

Assistance dogs are welcome. If you are planning a visit with an Assistance Dog, please let us know in advance which performance you will be attending by emailing [info@nyt.org.uk](mailto:info@nyt.org.uk)

## Building Maps

To plan your route to National Youth Theatre - you can use our location map [here](#) Download a map of the Ground and First Floors of our building [here](#)

## Access for All

For full information about National Youth Theatre's Access Measures please visit the Access page on our website [here](#):

<https://www.nyt.org.uk/about-us/accessibility/>

## Any more help?

If you need any support whilst visiting please speak to an usher.

Usher's wear black T-shirts and an NYT lanyard. Or contact our team on [boxoffice@nyt.org.uk](mailto:boxoffice@nyt.org.uk) or by phone on 020 3696 7066

# SHOW INFORMATION

## A note on all shows:

These shows are all work in progress which means that the sensory elements of the performances such as lights and sounds will continue to change and develop in the next few weeks. We will continue to update this information for each play as we move closer to July.

## Relaxed performances:

All performances are relaxed which means that during this performance we take a relaxed approach to movement and noise in the audience.

Latecomers are admitted, and you are free to leave the performance space and come back in at any time.

## Captioned Performances

Captions will be in English . If you require a seat with the best view of the caption unit, please let our box office team know on [boxoffice@nyt.org.uk](mailto:boxoffice@nyt.org.uk) or when you arrive to collect your ticket, and we will make sure you and your party are seated first.

- The Flip Side - Thursday 17<sup>th</sup> July, 7pm

# StoryFest Schedule

All performances start at 7pm

## **F\*cking White Boys**

Thursday 10, Friday 11, Saturday 12 July

## **StoryFirst 1: Alien Breakdown Play and Sunday (Someday)**

Monday 14 July

## **The Flip Side**

Wednesday 16, Thursday 17 July\*

*\*17 July is a captioned performance*

## **StoryFirst 2: BOSH and BUTCH**

Friday 18 July

## **THUNDER THIGHS**

Monday 21, Tuesday 22 July

## **Bin Girl**

Wednesday 23, Thursday 24 July

## **StoryFuture**

Friday 25 July

## **StoryFirst 3: The Boy in the Bed and Indigo**

Saturday 26 July

# SHOW INFORMATION

## F\*cking White Boys

By Gracie Oddie-James. Directed by Jessica Enemokwu

### Content information includes:

- Sex
- Racism
- References to and performed drug taking
- Misogyny
- Swearing
- Reference to and use of weapons
- Brief depictions of nudity and strangulation
- Use of e-cigarettes

### Sensory information:

- Flashing lights
- Loud music
- Blackout
- Haze
- Sound of gunshots

### Summary & audience information:

Hinge meets Jane Austen in NYT member Gracie Oddie-James' playful and comic debut. Set at Oxford University, the play explores sex, privilege and who's fetishising who.

The show lasts for approximately 90 minutes

# SHOW INFORMATION

## The Flip Side

**By Shireen Mula. Directed by Eleanor Henderson**

**A National Youth Theatre and Compass Collective co-production**

### **Content information includes:**

- Fleeting references to depression and exploitation.

### **Sensory information:**

### **Summary & audience information:**

Alex is pissed that dating never goes right. Jesse just wants everyone to get along and Sami is bored of all the drama. Jordan wonders have they finally met their soulmate while Ash wears killer heels. Always.

The Flip Side explores the truth behind the screens of 20 somethings who have come from near and far to live in London.

The Flip Side is be created with and star breakout talent from National Youth Theatre and its associate company Compass Collective, a charity who support the integration of young refugees and people seeking asylum in the UK through the arts.

The show lasts for approximately 60 minutes

# SHOW INFORMATION

## THUNDER THIGHS

**By Krishna Isthā. Directed by Nancy Zamit**

### **Content information includes:**

- References to racism, sexism and transphobia
- Mentions of sex
- depiction of a physical assault
- Stylised depictions of transphobic violence
- References to racism, sexism, homophobia and transphobia
- References to sex
- Swearing
- References to a young person providing care to their family

### **Sensory information:**

- Flashing lights
- Shouting
- Loud music
- Use of whistles
- Use of clapboard
- Flashing Lights
- Haze

# SHOW INFORMATION

## THUNDER THIGHS

**By Krishna Isthā. Directed by Nancy Zamit**

### **Summary & audience information:**

THUNDER THIGHS is a coming-of-age queer comedy set against the backdrop of roller derby, an energetic sport played on roller skates that prides itself on being inclusive. When THUNDER THIGHS are forced to work together to save their derby team—a chaotic group of lovable misfits—their biggest battle isn't on the track, it's with each other

The show lasts for approximately 70 minutes

# SHOW INFORMATION

## Bin Girl

**By Lauren O'Rourke. Directed by Matt Harrison**

### Content information includes:

- Weapons
- Balloons
- Sexual harassment
- Workplace harassment
- Misogyny
- Protest
- Strike & Industrial action
- Swearing
- Vaping

### Sensory information:

- Balloon popping
- Loud music

### Summary & audience information:

Set against the backdrop of the 2025 Birmingham bin strikes, Bin Girl explores who's to blame and the limits to female solidarity in a comic new drama

The show lasts for approximately 70 minutes

# SHOW INFORMATION

## Alien Breakdown Play

By Amenie Groves. Directed by Luke Skilbeck

### Content information includes:

- References to alcohol
- Themes of suicide
- Strong Language

### Sensory information:

### Summary & audience information:

When AWOL podcaster Terri Day reappears claiming to be an alien, her story must stand up against the FBI, an actual alien, and perhaps most difficult of all, her own doubts. An absurd comedy exploring undiagnosed neurodivergence.

The show lasts for approximately 30 minutes

# SHOW INFORMATION

## Sunday (Someday)

by Maya Ostle. Directed by Luke Skilbeck

### Content information includes:

- Strong language
- Bodily harm
- Blasphemy
- Discussion of God/Christianity
- Reference to: violence, misogyny, death, injury, sex, suicide and self harm

### Sensory information:

### Summary & audience information:

Set underneath a decaying old pier, Sunday (Someday) is a play about growing up, the supernatural, and the seaside.

Event Details

The show lasts for approximately 30 minutes

# SHOW INFORMATION

## BOSH

by Olivia McGeachy. Directed by Hetty Hodgson

### Content information includes:

- References to sexual activity
- Racism
- References to and depictions of violence

### Sensory information:

### Summary & audience information:

Following cheeky teenager Jaye and her cool best friend Robyn, BOSH is a new comedy exploring mixed heritage identity, friendship and coming of age.

The show lasts for approximately 30 minutes

# SHOW INFORMATION

## BUTCH

**by Imogen Cordelia Grover. Directed by Hetty Hodgson**

### Content information includes:

- Descriptions of slaughtering animals
- References to violence against women
- Use of profanities, offensive language and attitudes towards travelers and misogynistic and homophobic language.
- Disturbing imagery
- Use of knives
- Sexual assault
- Murder
- References to the Yorkshire Ripper killings.

### Sensory information:

### Summary & audience information:

In the summer of 1979, a violent attack on another young woman leaves the town of Haworth ravenous for answers, and Sam questioning the connection between the Yorkshire Ripper murders and her family business.

The show lasts for approximately 30 minutes

# SHOW INFORMATION

## The Boy in the Bed

by Jessie Williams. Directed by Josie Dexter

### Content information includes:

- Strong language
- Indirect references to self harm and mental health decline
- Brief depiction of aggression

### Sensory information:

### Summary & audience information:

In a hectic, tight-knit uni house, one boy's sudden refusal to get out of bed turns daily life into a pressure cooker of tension, compassion, and darkly comic chaos.

The show lasts for approximately 30 minutes

# SHOW INFORMATION

## Indigo

by Rechella Ketedzi. Directed by Josie Dexter

### Content information includes:

- Includes themes of medical stress and relationship breakdown
- Includes discussion of neurodivergence within family dynamics
- References to verbal and emotional tension within a family setting
- Depiction of a moment of physical conflict between siblings, domestic violence

### Sensory information:

### Summary & audience information:

Set in a car on the drive back to university after Mother's Day, *Indigo* follows three young women who use the humour and safety of sisterhood to confront unspoken anger and the reality of returning home.

The show lasts for approximately 30 minutes

# SHOW INFORMATION

## StoryFuture

Curated by James Northcote

**Content information includes:**

**Sensory information:**

**Summary & audience information:**

Exploring the future of live storytelling incorporating new technologies including Artificial Intelligence, sharing work created through our national free Digital Accelerator programme supported by Microsoft.