

STORYFEST

Show information

This document contains detailed information about the productions in our StoryFest Festival, describing what you should expect when attending the show.



This includes information about the performance space, the themes of the show, lighting and sound, content warnings, and further access information.

As this show is a work in progress this document will be updated as the show develops.

By discussing the content of the show, the below information contains descriptions of what happens in the performance.

If you have any questions, please do not hesitate to contact the National Youth Theatre Box office

Email: boxoffice@nyt.org.uk Phone: 020 3696 7066

CONTENTS

Page 3 - About the performance space

Page 4 - Accessing the theatre

Page 5 - Chill out space

Page 6-9 - About the facilities

Page 11 - Show information about F*cking White Boys

Page 12 - Show information about The Flip side

Page 13 - Show information about THUNDER THIGHS

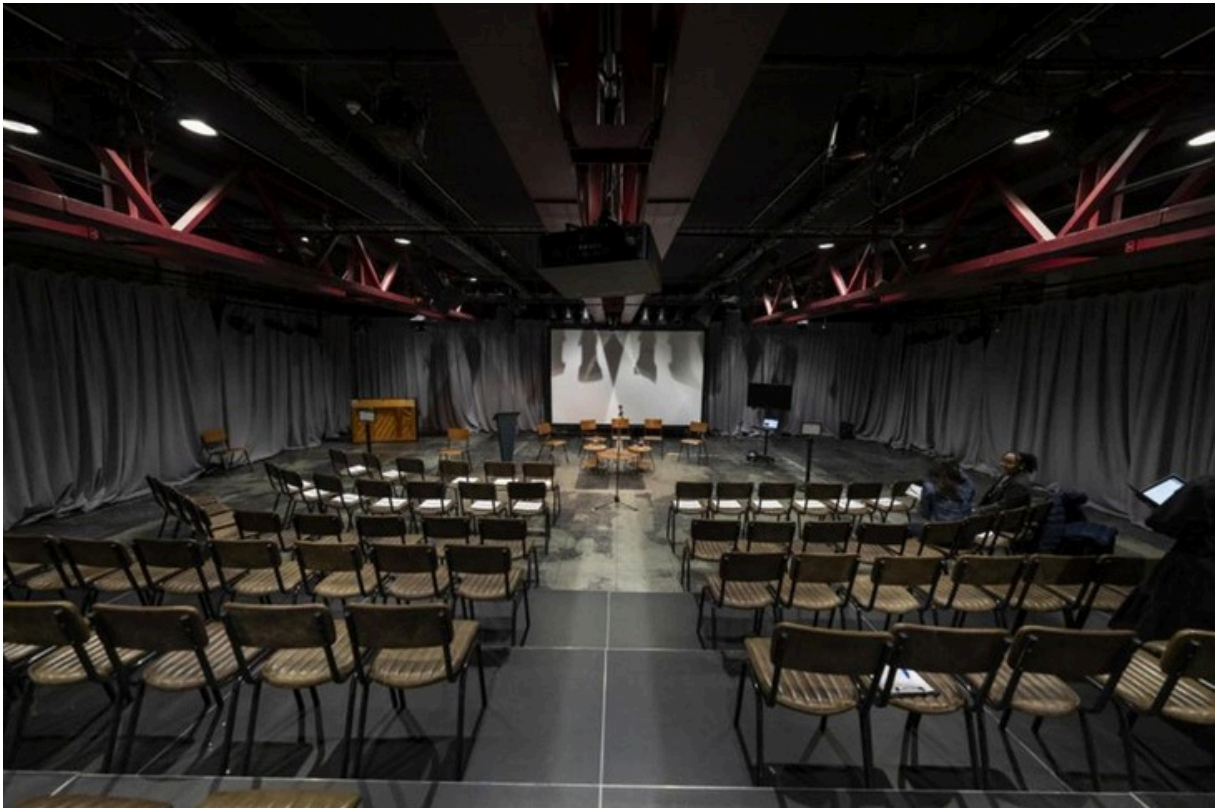
Page 14 - Show information about Bin Girl

PERFORMANCE SPACE

The show will take place at The Workshop Theatre, 443-445 Holloway Road, London N7 6LW.

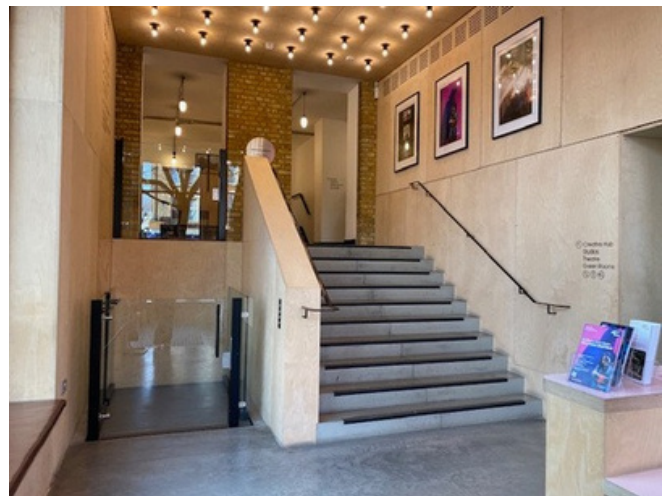
The maximum number of people in the theatre is 110.

Everyone is welcome at this performance, and we take a relaxed approach to movement and noise in the audience. Latecomers are admitted, and you are free to leave the performance space and come back in at any time

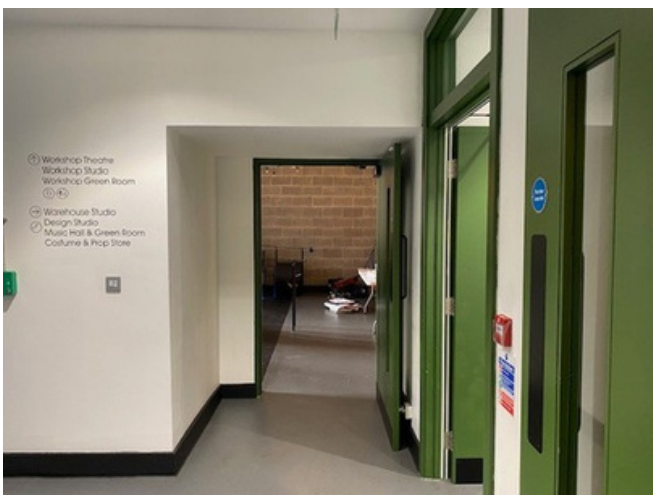


ACCESSING THE THEATRE

This production takes place at the National Youth Theatre, in our Workshop Theatre. When you arrive, you will be asked to show your E-Ticket at Reception. Once you've shown your ticket, use the stairs or take the lift.



Head through to the Green Room space outside the Theatre. The theatre entrance has a red neon sign above it.



CHILL OUT SPACE

There will be a chill out space for each performance. You can use this space in any way that works for you. You can make noise in this space or take some quiet time.

You can be in this space for as long as you want and come back into the theatre when you're ready. This is a shared space, open for every performance, before and during the show. You can eat and drink in this space.

Ear defenders and ear plugs are available to pick up at the bar if you would like some. If you need any more help or support please speak to our Venues Team. You can find them in our building or you can contact us over email on boxoffice@nyt.org.uk and by phone 020 3696 7066.



THEATRE FACILITIES

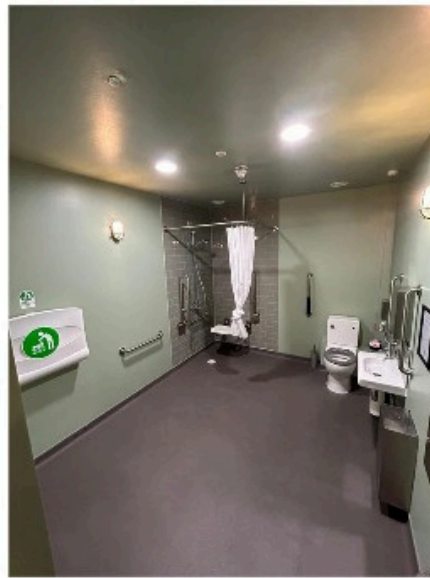
Toilets

When entering the green room outside the theatre, the toilets are on the right.

There are a range of cubicle toilets including a Changing Places Toilet.



Changing Places Toilet
(Adult changing surface, hoist, privacy screen, support rails, emergency cord)



Toilet with Baby changing, shower with seat, support rails, emergency cord



Toilet with Support rail and emergency cord



Single cubicle

Wheelchair Access

NYT's Theatre is wheelchair accessible. There is a lift from reception to the upper ground floor of the building.

Blue Badge Parking

There are blue badge parking bays nearby on Holloway Road.

THEATRE FACILITIES

Bar

We have a bar area selling snacks and drinks located opposite the theatre. This area can get quite busy during show times with music playing in the background.



Ear defenders and ear plugs are available to pick up from here.

THEATRE FACILITIES

Opening times

Box Office opening hours

- Weekdays: 10:00 AM – 6:00 PM, or until 30 minutes before performances on show days.
- Weekends: 10:00 AM – 6:00 PM, or until 30 minutes before performances on show days.
- Closed: Sundays and Bank Holidays.

Bar opening hours

The Bar opens 1 hour before the performance begins

Theatre opening hours

Doors to the theatre will open approximately 15 minutes before the performance begins

THEATRE FACILITIES

Assistance Dogs

Assistance dogs are welcome. If you are planning a visit with an Assistance Dog, please let us know in advance which performance you will be attending by emailing info@nyt.org.uk

Building Maps

To plan your route to National Youth Theatre - you can use our location map [here](#) Download a map of the Ground and First Floors of our building [here](#)

Access for All

For full information about National Youth Theatre's Access Measures please visit the Access page on our website [here](#):

<https://www.nyt.org.uk/about-us/accessibility/>

Any more help?

If you need any support whilst visiting please speak to an usher.

Usher's wear black T-shirts and an NYT lanyard. Or contact our team on boxoffice@nyt.org.uk or by phone on 020 3696 7066

SHOW INFORMATION

A note on all shows:

These shows are all work in progress which means that the sensory elements of the performances such as lights and sounds will continue to change and develop in the next few weeks. We will continue to update this information for each play as we move closer to July.

Relaxed performances:

All performances are relaxed which means that during this performance we take a relaxed approach to movement and noise in the audience.

Latecomers are admitted, and you are free to leave the performance space and come back in at any time.

SHOW INFORMATION

F*cking White Boys

By Gracie Oddie-James. Directed by Jessica Enemokwu

Content information includes:

- Sex
- Racism

Sensory information:

- Flashing lights

Summary & audience information:

Hinge meets Jane Austen in NYT member Gracie Oddie-James' playful and comic debut. Set at Oxford University, the play explores sex, privilege and who's fetishising who.

The show lasts for 70 minutes

SHOW INFORMATION

The Flip Side

By Shireen Mula. Directed by Eleanor Henderson

A National Youth Theatre and Compass Collective co-production

Content information includes:

Sensory information:

Summary & audience information:

The Flipside is a coming-of-age story taking an unblinking look at the bizarre customs and brutal rituals of growing up in London today.

The Flipside will be created with and star breakout talent from National Youth Theatre and its associate company Compass Collective, a charity who support the integration of young refugees and people seeking asylum in the UK through the arts.

The show lasts for 70 minutes

SHOW INFORMATION

THUNDER THIGHS

By Krishna Isthā. Directed by Nancy Zamit

Content information includes:

- References to racism, sexism and transphobia
- Mentions of sex

Sensory information:

Summary & audience information:

THUNDER THIGHS is a coming-of-age queer comedy set against the backdrop of roller derby, an energetic sport played on roller skates that prides itself on being inclusive. When THUNDER THIGHS are forced to work together to save their derby team—a chaotic group of lovable misfits—their biggest battle isn't on the track, it's with each other

The show lasts for 60 minutes

SHOW INFORMATION

Bin Girl

By Lauren O'Rourke. Directed by Matt Harrison

Content information includes:

Sensory information:

Summary & audience information:

Set against the backdrop of the 2025 Birmingham bin strikes, Bin Girl explores who's to blame and the limits to female solidarity in a comic new drama

The show lasts for 60 minutes