

RD

Pulser for cold and hot water meters Dynamic



Main Features

- Simple installation
- Pulsers can be fitted without breaking the meter seal
- Two different pulse values

Applications

- RD 01 and RD 01 for cold water meters up to 50 °C
- RD 02 and RD 022 for hot water meters up to 130 °C
- RD 01 and RD 02 for remote counters and batching systems
- RD 011 and RD 022 for heat meters
- RD 022 Ex for use in explosive environment R



Reed RD

Available variants

Pulser	Temperature	Order no
RD 01	50 °C	11 78 01
RD 02	130 °C	11 78 02
RD 011	50 °C	11 78 03
RD 022	130 °C	11 78 04
RD 022 EX	50 / 130 °C	11 20 29

Performance data

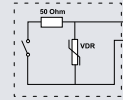
Switching component Reed switch, plug type

Switch protection RD 01/02 surge limiting resistor and voltage limiting varistor (VDR)

switching voltage $U_{max} = 48 \text{ V AC/DC}$

switching current $I_{max} = 0.2 \text{ A}$

switching power $P_{max} = 4 \text{ W}$

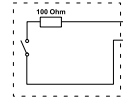


Switch protection RD 011/022 surge limiting resistor

switching voltage $U_{max} = 125 \text{ V AC/DC}$

switching current $I_{max} = 0.035 \text{ A}$

switching power $P_{max} = 2 \text{ W}$

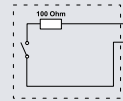


RD 022 Ex surge limiting resistor

switching voltage $U_{max} = 28 \text{ V AC/DC}$

switching current $I_{max} = 0.035 \text{ A}$

switching power $P_{max} = 0.98 \text{ W}$



Pulse duration depending on flow in the meter
at meter stop continuous pulse possible

Protection IP 68 (EN 60529)

Temperature range RD 01/011 ambient temperature $t_{amb} \leq 70 \text{ °C}$
medium temperature $t_m \leq 50 \text{ °C}$

Temperature range RD 02/022 ambient temperature $t_{amb} \leq 70 \text{ °C}$
medium temperature $t_m \leq 150 \text{ °C}$

Connection cable length 3 m

Pulse values

Size of meter	DN	RKD / RPD 1 pulse $\hat{=}$...	40 ... 125 1 pulse $\hat{=}$...	150 ... 300 1 pulse $\hat{=}$...	DN 400 1 pulse $\hat{=}$...
Cold water meter	Standard	0.1 m ³ 0.01 m ³	1 m ³ 0.1 m ³	10 m ³ 1 m ³	100 m ³ 10 m ³
Cold water meter	With special register	-	1 m ³ 0.01 m ³	10 m ³ 0.1 m ³	100 m ³ 10 m ³
Hot water meter	Standard	-	0.25 m ³ 0.1 m ³	2.5 m ³ 1 m ³	-
Hot water meter	With special register	-	0.25 m ³ 0.025 m ³	2.5 m ³ 0.25 m ³	-

Wiring example

