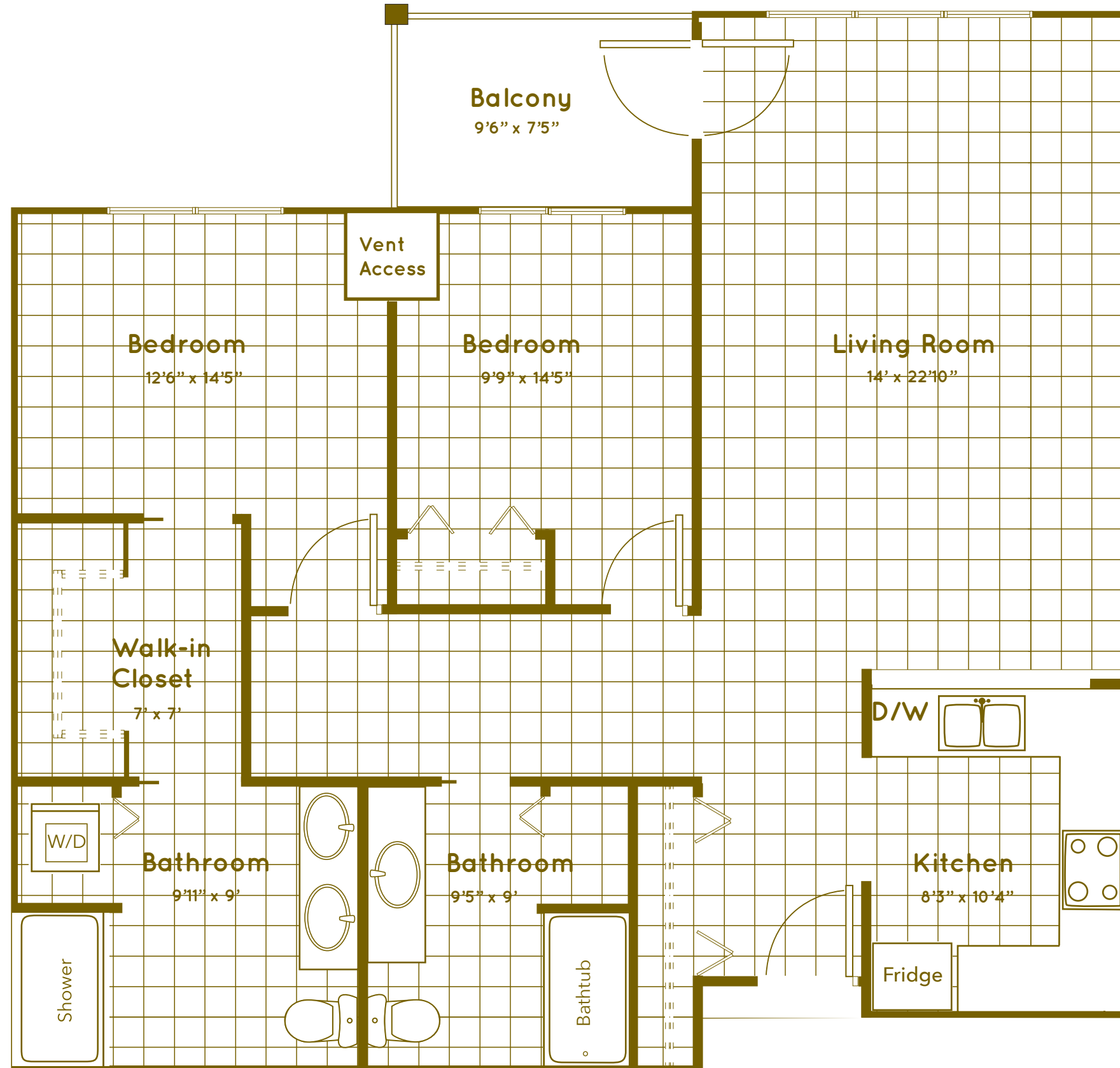


# Aspen Pointe Two Bedroom Madison



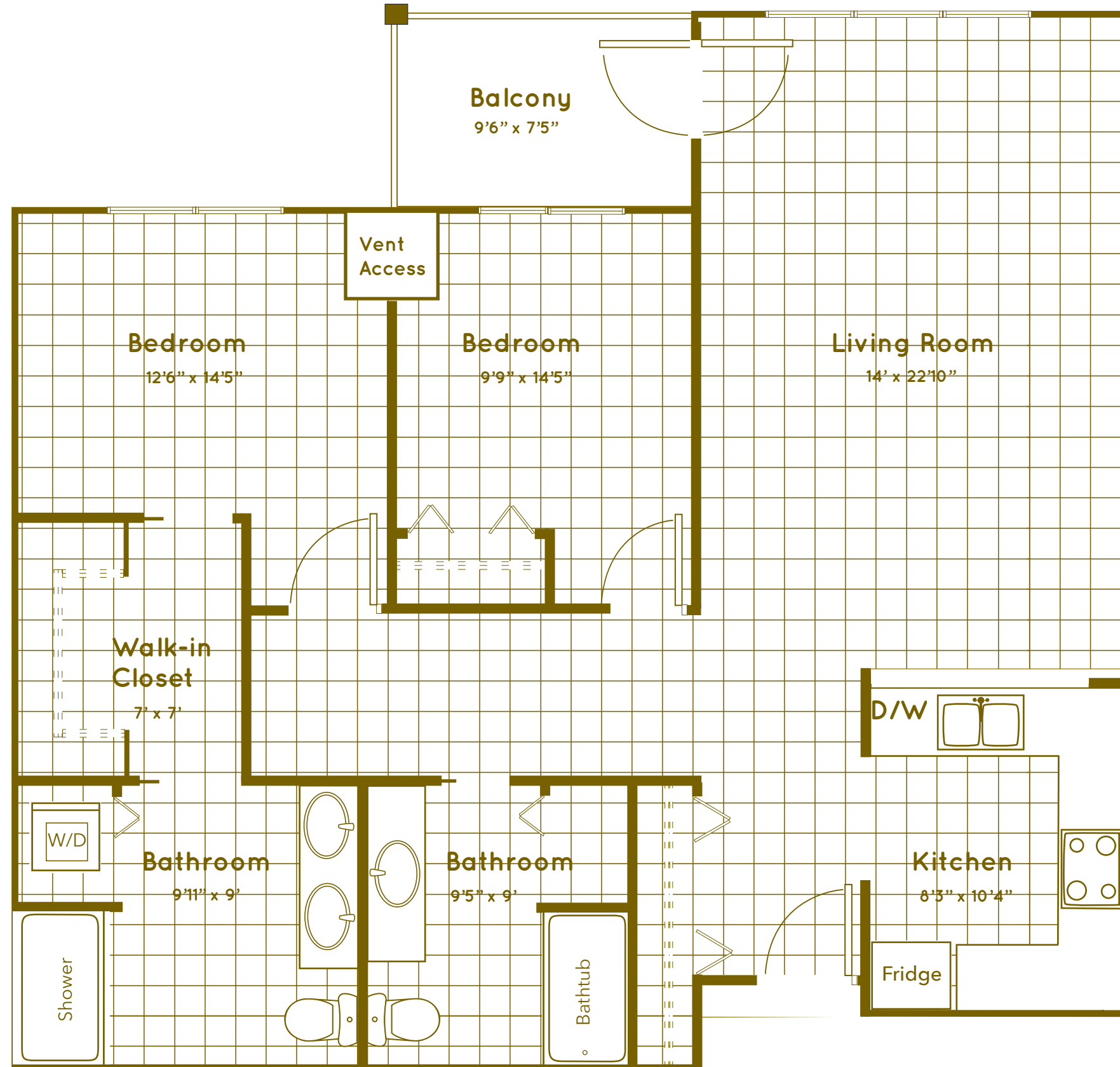
This apartment home is number:  
**D-101, D-203, D-303**  
Approximately 1135 sq ft  
Scale: 1/4" = 1'



 **BOZEMAN HEALTH**  
HILLCREST SENIOR LIVING

Marketing and Information Office  
406-414-2008  
[www.HillcrestLivingBozeman.org](http://www.HillcrestLivingBozeman.org)

# Aspen Pointe Two Bedroom Madison Reverse



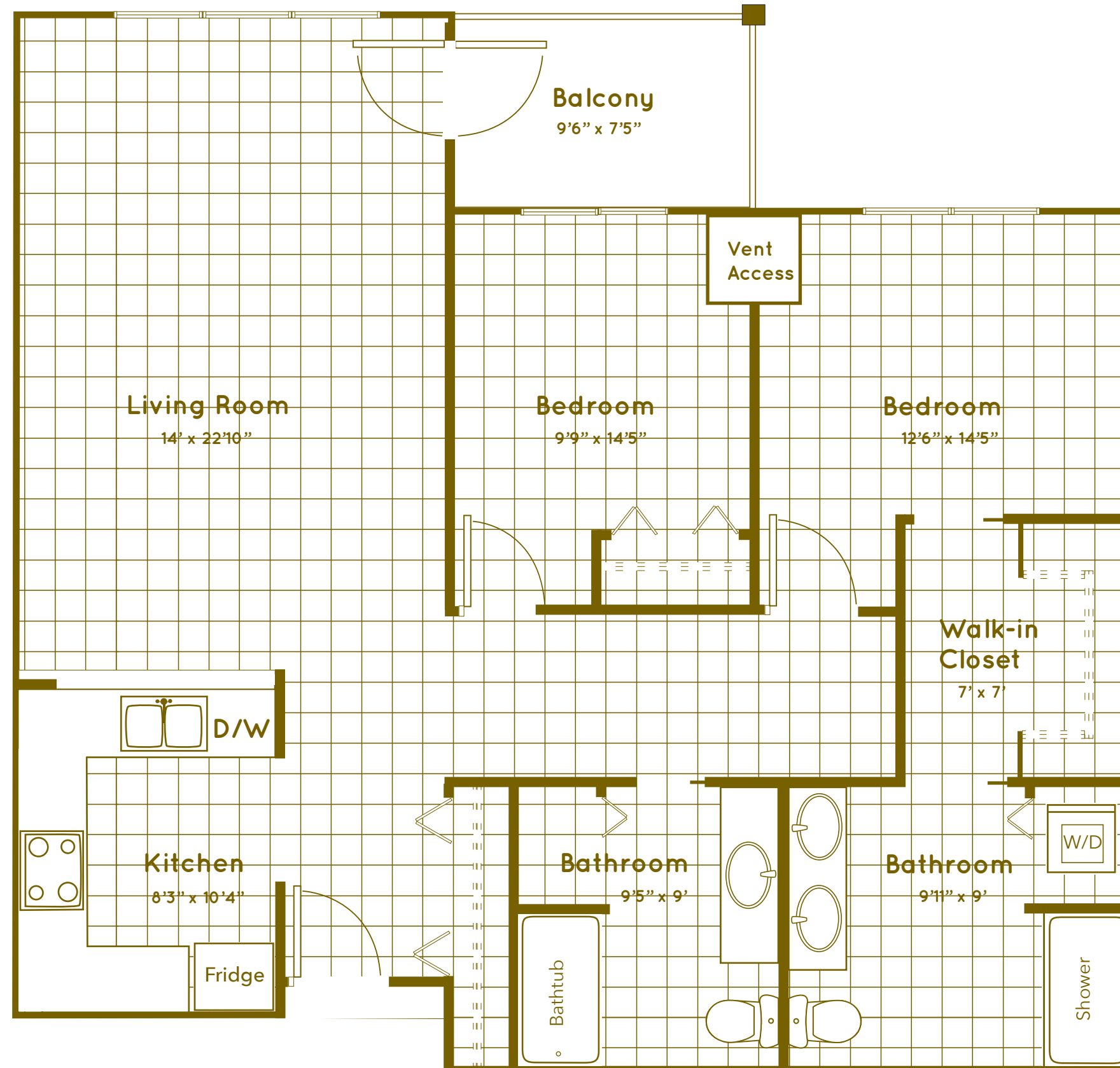
This apartment home is number:  
**D-102, D-106, D-204**  
**D-208, D-304, D-308**  
Approximately 1145 sq ft  
Scale: 1/4" = 1'



 **BOZEMAN HEALTH**  
HILLCREST SENIOR LIVING

Marketing and Information Office  
406-414-2008  
[www.HillcrestLivingBozeman.org](http://www.HillcrestLivingBozeman.org)

# Aspen Pointe Two Bedroom Madison



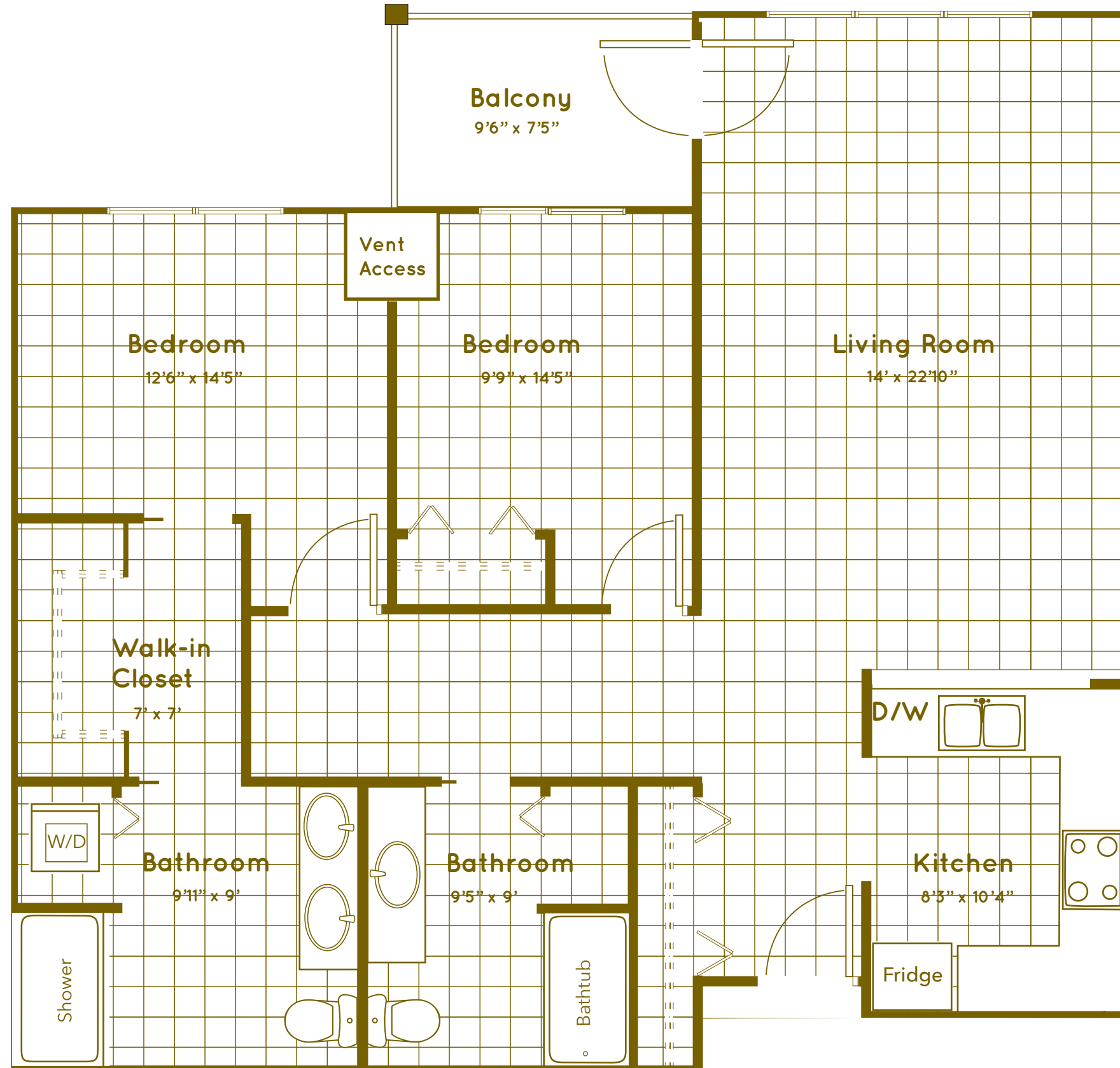
This apartment home is number:  
**D-103, D-205, D-305**  
Approximately 1145 sq ft  
Scale: 1/4" = 1'



 **BOZEMAN HEALTH**  
HILLCREST SENIOR LIVING

Marketing and Information Office  
406-414-2008  
[www.HillcrestLivingBozeman.org](http://www.HillcrestLivingBozeman.org)

# Aspen Pointe Two Bedroom Madison



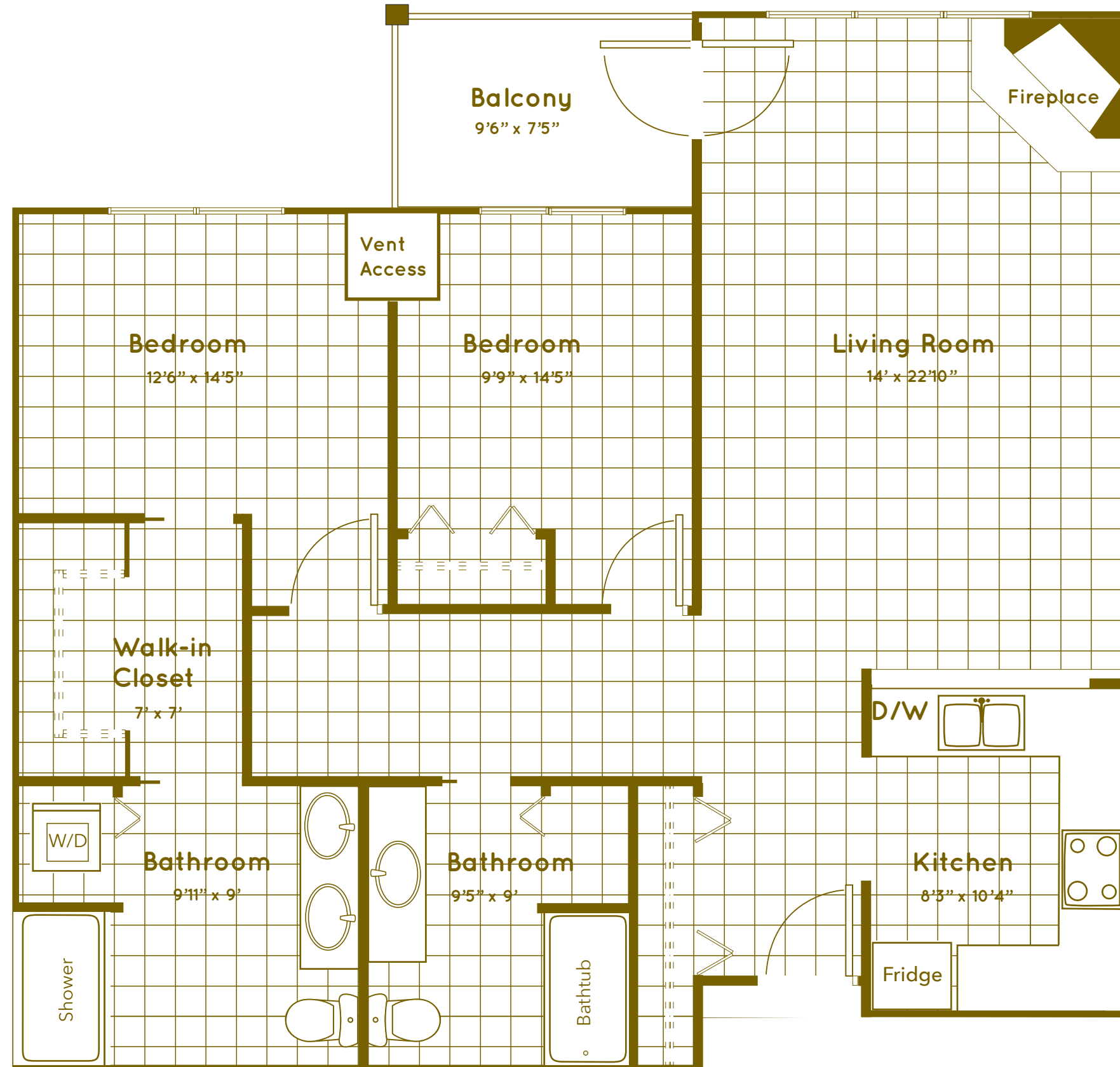
This apartment home is number:  
**D-104, D-108, D-206**  
**D-210, D-306, D-310**  
Approximately 1145 sq ft  
Scale: 1/4" = 1'



 **BOZEMAN HEALTH**  
HILLCREST SENIOR LIVING

Marketing and Information Office  
406-414-2008  
[www.HillcrestLivingBozeman.org](http://www.HillcrestLivingBozeman.org)

# Aspen Pointe Two Bedroom Madison



This apartment home is number:  
**D-105, D-207, D-307**  
Approximately 1135 sq ft  
Scale: 1/4" = 1'

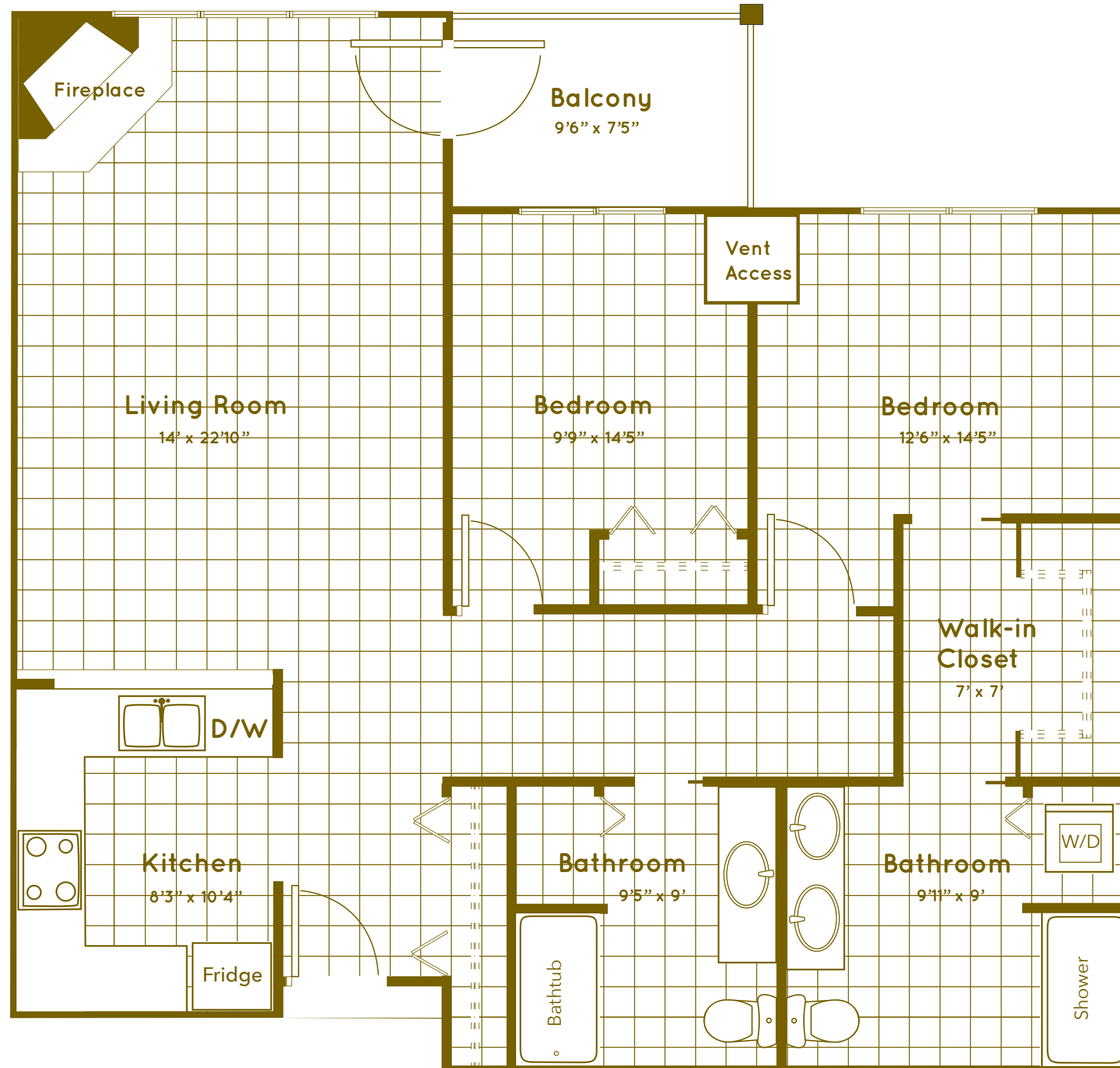


 **BOZEMAN HEALTH**  
HILLCREST SENIOR LIVING

Marketing and Information Office  
406-414-2008  
[www.HillcrestLivingBozeman.org](http://www.HillcrestLivingBozeman.org)



# Aspen Pointe Two Bedroom Madison



This apartment home is number:

**D-107, D-209**

Approximately 1145 sq ft

Scale: 1/4" = 1'



**BOZEMAN HEALTH**  
HILLCREST SENIOR LIVING

Marketing and Information Office

406-414-2008

[www.HillcrestLivingBozeman.org](http://www.HillcrestLivingBozeman.org)