



BOZEMAN HEALTH

Subarea Plan Overview



BOZEMAN HEALTH

SANDERSON
STEWART 

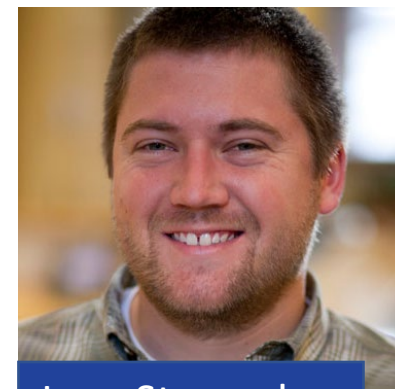
- The City of Bozeman asked Bozeman Health to update the 2006 subarea plan, which guides future land use.
- Bozeman Health currently has no plans to develop the land in Highland Glen.
- The planning process is just beginning – we are carrying out a robust public engagement process to ensure your input will be considered in meaningful ways.

Bozeman Health has partnered with Sanderson Stewart to provide local professional expertise to facilitate the subarea planning process.

Sanderson Stewart is an engineering and planning firm with 80 employees working across the intermountain West. For over 50 years we have been driven by a single purpose to plan and design enduring communities.



Danielle Scharf
Project Principal



Joey Staszczuk
Senior Engineer



Lauren Waterton
Senior Planner



Chris Naumann
Senior Planner










Lenna Johnson
Staff Planner



BOZEMAN^{MT} COMMUNITY PLAN



-  A RESILIENT CITY;
-  A CITY OF UNIQUE NEIGHBORHOODS;
-  A CITY BOLSTERED BY DOWNTOWN AND COMPLEMENTARY DISTRICTS;
-  A CITY INFLUENCED BY OUR NATURAL ENVIRONMENT, PARKS, AND OPEN LANDS;
-  A CITY THAT PRIORITIZES ACCESSIBILITY AND MOBILITY;
-  A CITY POWERED BY ITS CREATIVE, INNOVATIVE, AND ENTREPRENEURIAL ECONOMY;
-  A CITY ENGAGED IN REGIONAL COORDINATION.





Planning Context

Subarea Plan

Applies the goals and objective of the Community Plan to a more specific 'neighborhood' or district. The City requested Bozeman Health create a new subarea plan to replace the outdated 2006 Subarea Plan.



Master Site Plan

Required for each distinct part of a Subarea Plan. A Master Site Plan outlines the phased development of a particular property.



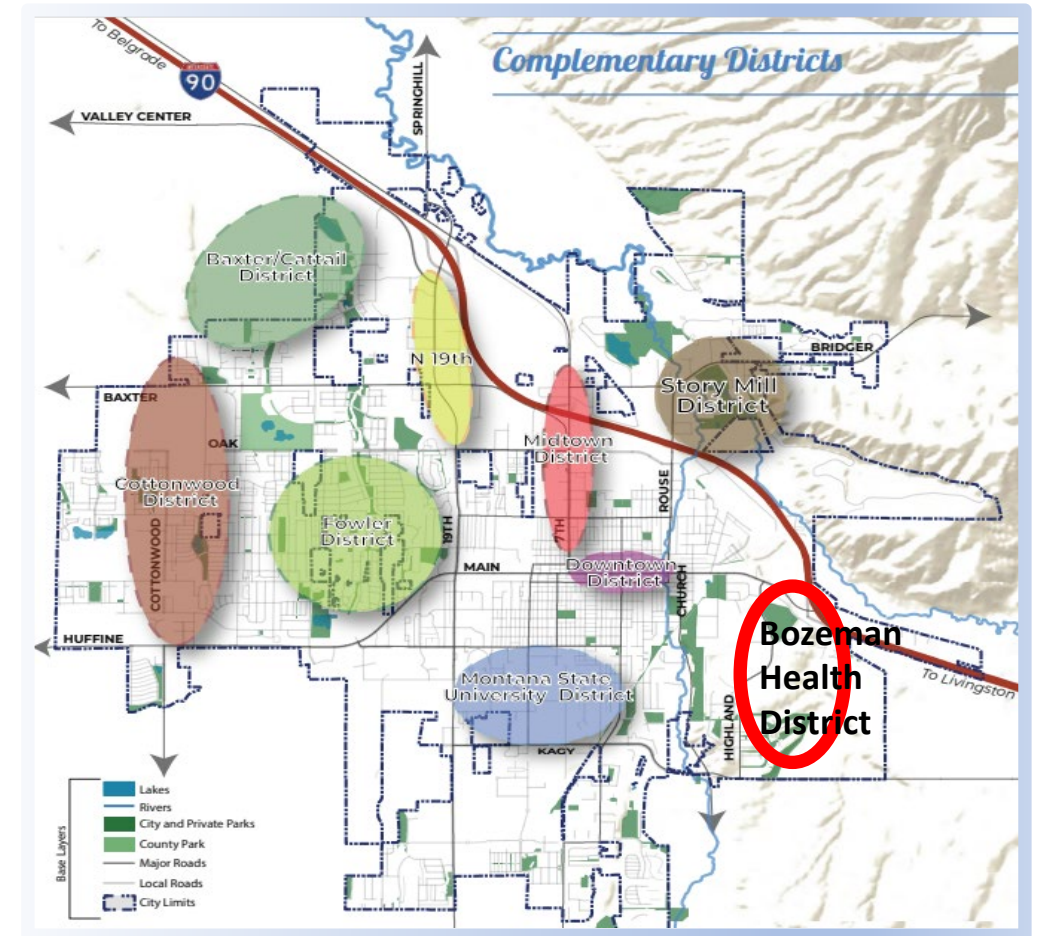
Site Plan

Required for each development project within an approved Master Site Plan.



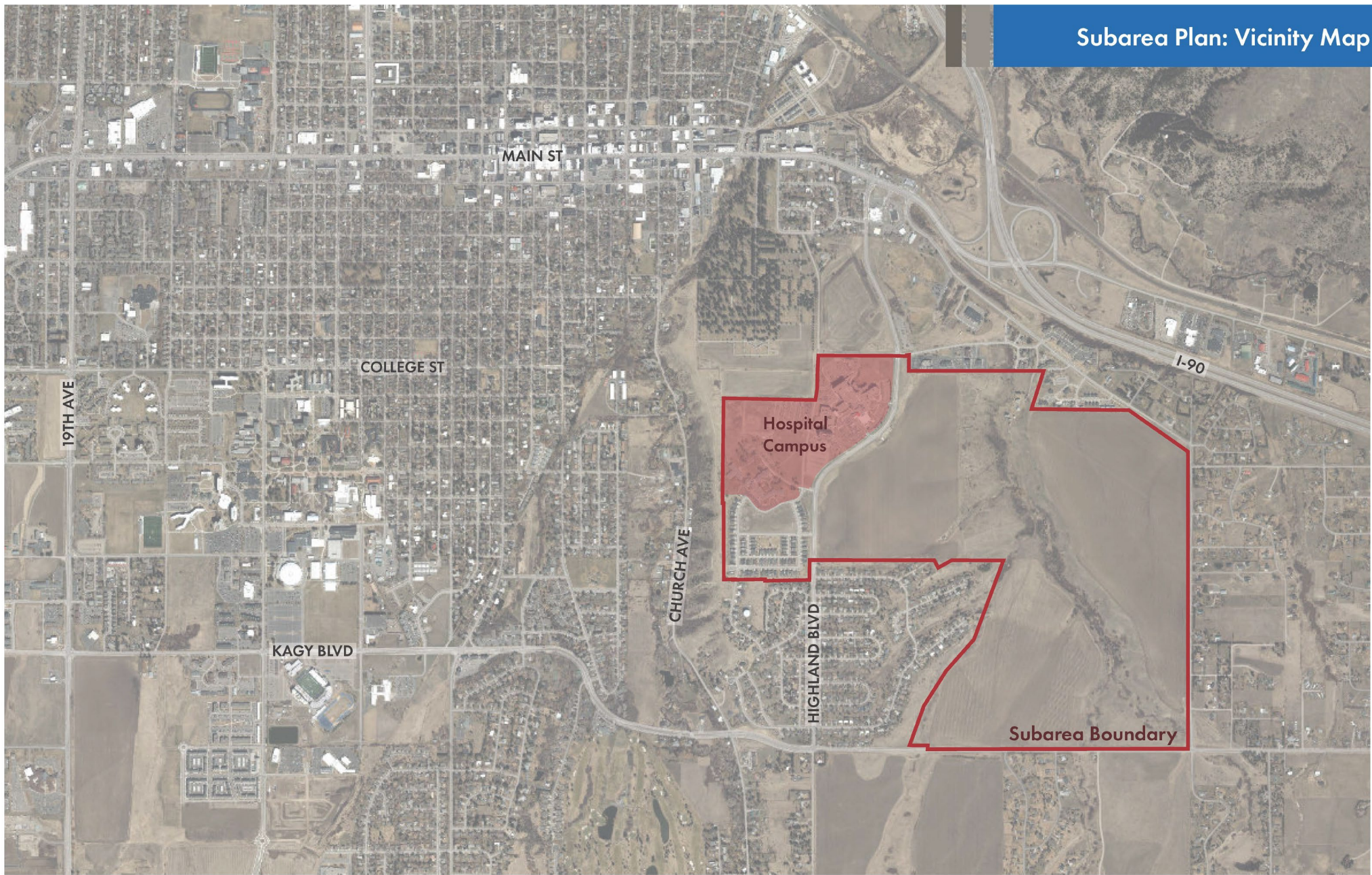
Building Permit

Required to construct each building or component of an approved Site Plan.



Vicinity Map

Subarea Plan: Vicinity Map



2006 Subarea Plan



LEGEND:

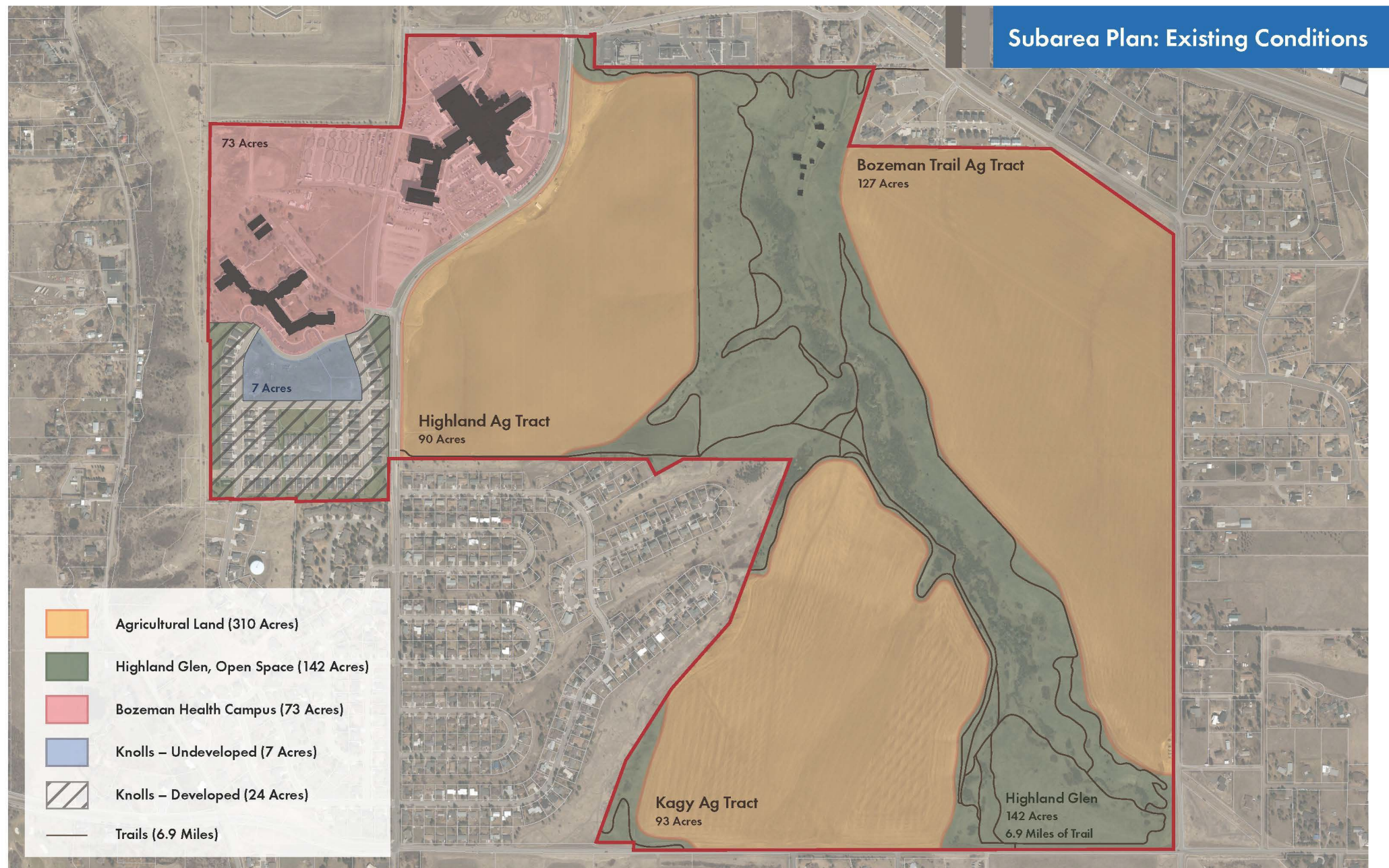
- | | | | | |
|--|---|--|---|--|
|  EXISTING HOSPITAL FACILITY
- (v-28 AC) |  HILLCREST RESIDENTIAL
- (v-40 AC) |  MULTI-FAMILY RESIDENTIAL
- (v-6 AC) |  EXISTING ROADS (PRIMARY) |  EXISTING PEDESTRIAN TRAILS |
|  CONTIGUOUS HOSPITAL AREA
- (v-28 AC) |  MULTI-USE CAMPUS
- (v-27 AC) |  NEIGHBORHOOD SERVICES
- (v-6 AC) |  FUTURE SIGNALIZATION POTENTIAL |  PROPOSED PEDESTRIAN TRAIL |
|  HIGHLAND VILLAGE CENTER (MIXED USE)
- (v-27 AC) |  LOW DENSITY RESIDENTIAL
- (v-27 AC) |  NATURAL AREAS / OPEN SPACE |  FUTURE PUBLIC TRANSPORTATION STOP |  EXISTING DRAINAGE SWALE |
|  EXISTING HILLCREST FACILITY
- (v-28 AC) |  MEDIUM DENSITY RESIDENTIAL
- (v-28 AC) |  ACTIVE RECREATION PARKS |  GRADE SEPARATED TRAIL CROSSING |  OVERHEAD POWERLINE |
|  FUTURE HILLCREST EXPANSION AREA
- (v-28 AC) |  HIGH DENSITY RESIDENTIAL
- (v-28 AC) |  PUBLIC WORKS FACILITY POTENTIAL
- (v-28 AC) | | |

Scale in Feet
1" = 100'





Existing Conditions



Bozeman Health

- Recognizes the vision of our leadership in 1956, and a responsibility to continue building on that vision
- Leans into regional growth challenges and opportunities
- Helps ensure access for all to an #OutdoorHealthyLife
- Safeguards long-term sustainability of high quality, locally available healthcare services

Bozeman Health is inspired by a desire to take outdoor active and healthy lifestyles and combine them with traditional services including behavioral health to increase health and wellness in a way that is accessible to all. Our leadership is passionate about not only maintaining, but also enhancing the open space our care team members and community have grown to love since beginning our trails partnerships in 2013.



"GVLT is so proud of our decade long partnership with Bozeman Health and the incredible trails we have built together at Highland Glen. We look forward to engaging in this planning process to ensure the future of those trails and to envision new ways to connect our community to the land."

"BSF is committed to the stewardship of the Highland Glen Trails. Highland Glen has served as a centerpiece of Bozeman's trail network—accommodating hundreds of users daily from kids after school ski lessons, to community members getting out for a lunch break, to free weekend family fun days. BSF looks forward to working with Bozeman Health and the community on this land use plan."



Bozeman Health Subarea Plan
Community Engagement will take place between
May and October 2022

Community Open House Events

- June 21, 2022
- July 12, 2022
- September TBD
- October TBD

We value your engagement. If you are interested in receiving updates on the planning process and opportunities to engage, please subscribe to our update list [here](#).

More information can be found here:
<https://www.bozemanhealth.org/bhsubarea/>



Community Engagement is:

an **inclusive** and **ongoing process** that relies on a **two-way exchange** of information, ideas, and expertise between the public and the City of Bozeman to solve problems and make **sustainable decisions**.



Community Engagement

- May – October 2022

TIMELINE: Today--1--2--3--4--5--6--7--8--9--10--11--12--13--14+ months

Plan Iterations (Draft and final versions)

- September – December 2022



City of Bozeman Adoption Process

- January – June 2023

Again, we value your engagement. If you are interested in receiving updates on the planning process and opportunities to engage, please subscribe to our update list [here](#).