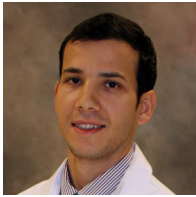


Meet Our Critical Care Team



Edmond Sarkis, MD



Michael Bonk, MD



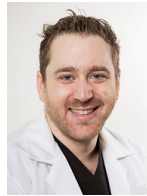
Michael Kouch, MD



Nitin Puri, MD



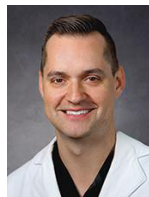
Rachoin Jean-Sebastian, MD



Samson Zarbiv, MD



Robert Cole, MD



Jason Bartock, MD

AFTER-HOURS COVERAGE BY ADVANCED ICU CARE

Cape Regional has partnered with Advanced ICU Care, the nation's largest provider of Tele-ICU services, to deliver monitoring by highly-trained intensivist physicians and critical care specialists 7 pm to 7 am, 7 days a week, providing an extra layer of care to enhance quality and patient safety. Their services include in-room video conferencing, continuous monitoring of patient data - including vital signs, medications, lab results - and collaboration with the bedside critical care team.



CRITICAL CARE SPECIALISTS

CLOSE TO HOME



Two health systems collaborating to deliver advanced critical care to you and your family, right here in Cape May County.



For a Healthier Life.

609.463.CAPE | www.caperregional.com



Cape Regional Health System and Cooper University Health Care

Cape Regional Medical Center in partnership with Cooper University Health Care has launched a Critical Care Intensivist Program.

An intensivist is a board-certified physician who provides special care for critically ill patients. Also known as a critical care physician, the intensivist has advanced training and experience in treating this complex type of patient.

Cape Regional has a long history of providing high quality care and continually looks for ways to improve the services we provide. The Intensivist program is a perfect example of that commitment.

The partnership enhances Cape Regional's high quality critical care program and support our community with physicians experienced in treating very complex patient cases.

Critical Care Program Highlights Include:

- Access to Cooper University Health Care's academic medical center program utilizing the best practices in critical care management, the latest clinical techniques, research protocols and access to nationally recognized physicians who collaborate with other nationally ranked critical care specialists to ensure the best possible care is provided
- The Intensivist team's collaboration with our hospitalists, specialists and primary care providers to deliver a higher level of critical care to the patients we treat
- Patients requiring this type of care will no longer have to leave our community, which benefits not only the patient but their families as well
- The Cooper team are members of our medical staff and are all board certified or board eligible in critical care medicine
- The team provides coverage in the ICU at Cape Regional Medical Center 12 hours a day with continued Advanced ICU telemedicine support after hours

Why Cooper University Healthcare

Cooper University Health Care is the leading academic health system in South Jersey.

World-class physicians and nurses, and state-of-the-art methods for treating patients, are at the heart of Cooper critical care medicine.

This partnership provides an opportunity for the Critical Care physician team to collaborate with Cape Regional Health System providers to deliver a higher level of critical care to the residents and visitors to Cape May County.

