

Cass County MO

Community Health Needs Assessment
Prepared on behalf of ConnectCASS



December 2013

**VWV Research & Development INC.
Olathe, KS**

Community Health Needs Assessment

Table of Contents

I Executive Summary

II Methodology

- a) CHNA Scope & Purpose
- b) Local Collaborating CHNA parties...the identity of any and all organizations with which the organization collaborated and third parties that engaged to assist with the CHNA.
- c) CHNA & Town Hall Research Process... a description of the process & methods used to conduct the CHNA, a description of how the organization considered the input of persons representing the community, and an explanation of the process/criteria used in prioritizing such needs.
- d) Community Profile (Demographics/Economics)... a description of the community served by the facility and how the community was determined. TABS 1-2

III Community Health Status

- a) Town Hall CHNA Findings: Areas of Strengths & Areas to Change and/or Improve.”
- b) County Health Area of Future Focus... a prioritized description of all of the community needs identified by the CHNA.
- c) Historical Health Statistics – TAB 3-10

IV Inventory of Existing County Health Resources

- a) Physician Manpower,
- b) Health Service Offerings,
- c) Detail Inventory of HC providers a description of the existing health care facilities and other resources within the community available to meet the needs identified through the CHNA.

V Detail Exhibits

- a) Patient Origin & Access to Care
- b) Town Hall Attendees, Notes & Feedback... who those persons are (with qualifications)
- c) Public Notice & News
- d) Primary Research Detail *Shaded lines note IRS requirements*

I. Executive Summary

[VVV Research & Development INC]

I. Executive Summary

The following Community Health Needs Assessment (CHNA) report has been prepared for **ConnectCASS**, a 501(c) 3 organization dedicated to provide leadership to enhance the whole health of every person in Cass County Missouri. This report has been prepared to meet CHNA Federal regulations for both *Cass Regional Medical Center and Cass County Health Department (MO)* and was contracted by ConnectCass.

Creating healthy communities requires a high level of mutual understanding and collaboration with community individuals and partner groups. The development of this assessment brings together community health leaders and providers, along with local residents, to research, prioritize county health needs and to document community health delivery successes. This health assessment will serve as the foundation for community health improvement efforts for the next three years. The Patient Protection and Affordable Care Act (ACA) require non-profit hospitals to conduct a CHNA every three years and adopt an implementation strategy to meet the needs identified by the CHNA.

Year 2013 CHNA brings together a variety of health status information. This assessment was coordinated and produced by VVV Research & Development INC. from Olathe, Kansas under the direction of Vince Vandelaar, MBA. Important CHNA benefits for the sponsoring local hospital and health department, as well as for the community, are as follows: 1) Increases knowledge of community health needs and resources, 2) Creates a common understanding of the priorities of the community's health needs, 3) Enhances relationships and mutual understanding between and among stakeholders, 4) Provides a basis upon which community stakeholders can make decisions about how they can contribute to improving the health of the community, 5) Provides rationale for current and potential funders to support efforts to improve the health of the community, 6) Creates opportunities for collaboration in delivery of services to the community and 7) Provides guidance to the hospital and local health department for how they can align their services and community benefit programs to best meet needs.

Town Hall Community Health Strengths Cited – Cass County Missouri

Cass County, MO - Community Health "Strengths" Summary			
#	Topic	#	Topic
1	Access to services and providers.	6	Private funding for health care initiatives
2	Good Pharmacies, Rural clinics, Dentists, Chiropractors & Optical Care	7	Quality health care providers
3	Great Highway access - Interstate 71	8	Strong education/schools- embrace health
4	Improving health care facilities (new)	9	Strong hospitals and health department working relations
5	People in Cass Co are involved in health care and want to see changes	10	Surrounding county health partnerships ie Jackson MO & Johnson KS

CHNA “Health Priorities” Cited – Cass County MO:

Below is a summary table of Town Hall roundtable views of local health needs. Each Town Hall participant picked their top 4 areas of interest.

Cass County MO				
Town Hall Community Health Needs Priorities (36 Attendees)				
#	NEEDS (TOPICS)	Votes	%	Accum
Total Town Votes		131	100%	
1	Lack of mental health providers & placement of patients	28	21.4%	21.4%
2	Obesity Rates - Need for Nutrition & Fitness	20	15.3%	36.6%
3	Transportation for health care	17	13.0%	49.6%
4	Drug Prevention resources	15	11.5%	61.1%
5	Access for dental treatment for uninsured/Medicaid	13	9.9%	71.0%
6	Limited local Health Department funding	7	5.3%	76.3%
7	Desire for Urgent Care	6	4.6%	80.9%
Note:	Other items receiving votes: expand rural Cass County ambulance services (SW / Eastern / Western communities), provide assisted living options rural Cass, expand prenatal wellness, increase senior communications of health offerings, recruit additional physicians (within 20 mins of home) ie Pediatrics, OBGYN, Pulmonary, Neurology, Endocrinology & Geri and accomodate large patients using ambulance services			

Key Community Health Needs Assessment Conclusions (Secondary Research)

- MO HEALTH RANKINGS: According to the 2013 RWJ County Health Rankings study, Cass County’s highest State of Missouri ranking (of 115 counties) was in Health Outcomes (14th). The lowest ranking was in Health Behaviors (55th).
- TAB 1: Cass County’s population has grown slightly for the last three years slightly declining by .9% (Years 2010-2012). The median household income is \$60,807, which is higher than the state (\$47,202) and almost double other rural county norms (\$36,366).
- TAB 2: Cass County has an unemployment rate of 8.6%, on par with the state and rural county norms. The number of children living below the poverty level is much lower than the state (22%) and other rural counties (30.4%).
- TAB 3: Cass County has a higher number (91.9%) of high school graduates than rural county communities (81.3%) and a higher number of bachelor degrees versus rural (21.9% versus 12.94%, respectively) and slightly lower than the state (25.4%).

Continue Key CHNA Conclusions (Secondary Research)

- TAB 4: Cass County's percentage of mothers who have prenatal care in the first trimester is lower than other rural counties (75.4% for Cass versus 80.9% for comparable counties.)
- TAB 5: Cass County has only 33.2 primary care providers per 100,000 people, compared to 51.7 for the state and 44.5 for comparable counties.
- TAB 6: The number of individuals treated for various behavioral disorders such as adjustment, mood, developmental and psychotic disorders fell slightly from 2011 to 2012 in Cass County. Treatment for anxiety and impulse control disorders rose slightly.
- TAB 7: Adult obesity in Cass County (33%) is slightly higher than the state average (31%) and comparable counties (31.5%). The physical inactivity rate (28%) and adults smoking rate (23%) about the same as both the state and comparable counties.
- TAB 8: Cass County has a lower rate of uninsured at 15.6% than the state norm of 19.3% and other rural counties at 20.1%
- TAB 9: Heart disease and cancer death rates in Cass County are lower than the state average, but chronic respiratory disease and Alzheimer's disease death rates are slightly higher.
- TAB 10: The mammography rate in Cass County is slightly higher than the state and comparable counties. The average number of poor mental and physical health days is lower than the state and comparable counties.

Key Community Health Needs Assessment Conclusions (Primary Research)

- Cass County residents are very satisfied with community pharmacies, primary care doctors, inpatient / outpatient services, chiropractors and dentists. Areas with low community satisfaction were family planning services, mental health services, nursing homes, child care options and public health.
- Additional health education and/or attention in Cass County were as follows: 1) Obesity, 2) Nutrition, 3) Abuse, 4) Preventative Health, 5) Dementia, 6) Mental Illness and 7) Tobacco Use.
- Causes of diseases or disability cited as a major health problem in Cass County were: Obesity, Substance Abuse, Diabetes, Heart Disease and Mental Disorders.
- The overall quality of care delivery in Cass County is 82.2% (Very Good /Good) compared to a regional norm of 79.4%.

II. Methodology

[VVV Research & Development INC]

II. Methodology

a. CHNA Scope and Purpose

The new federal Patient Protection and Affordable Care Act requires that each registered 501(c)3 hospital conduct a Community Health Needs Assessment (CHNA) at least once every three years and adopt a strategy to meet community health needs. Any hospital who has filed a 990 is required to conduct a CHNA. IRS Notice 2011-52 was released in late fall of 2011 to give notice and request comments.

JOB #1: Meet/Report IRS 990 Required Documentation

1. a description of the community served by the facility and how the community was determined;
2. a description of the process and methods used to conduct the CHNA;
3. the identity of any and all organizations with which the organization collaborated and third parties that it engaged to assist with the CHNA;
4. a description of how the organization considered the input of persons representing the community (*e.g., through meetings, focus groups, interviews, etc.*), who those persons are, and their qualifications;
5. a prioritized description of all of the community needs identified by the CHNA and an explanation of the process and criteria used in prioritizing such needs; and
6. a description of the existing health care facilities and other resources within the community available to meet the needs identified through the CHNA.

Section 501(r) provides that a CHNA must take into account input from persons who represent the broad interests of the community served by the hospital facility, including individuals with special knowledge of or expertise in public health. Under the Notice, the persons consulted must also include: Government agencies with current information relevant to the health needs of the community and representatives or members in the community that are medically underserved, low-income, minority populations, and populations with chronic disease needs. In addition, a hospital organization may seek input from other individuals and organizations located in or serving the hospital facility's defined community (*e.g., health care consumer advocates, academic experts, private businesses, health insurance and managed care organizations, etc.*).

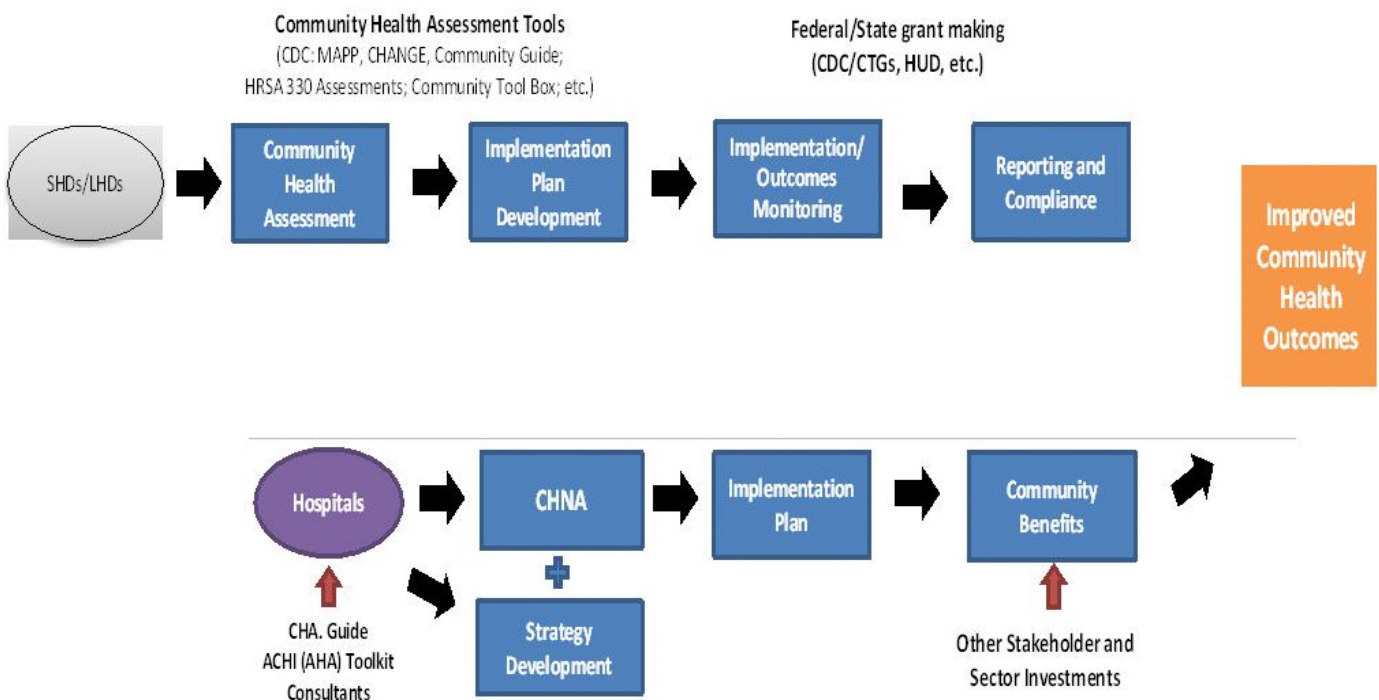
JOB #2: Making a CHNA Widely Available to the Public

The Notice provides that a CHNA will be considered to be "conducted" in the taxable year that the written report of the CHNA findings is made widely available to the public. The Notice also indicates that the IRS intends to pattern its rules for **making a CHNA "widely available to the public"** after the rules currently in effect for Form 990. Accordingly, an organization would make a **facility's written report** widely available by posting the final report on its website either in the form of (1) the report itself, in a readily accessible format, or (2) a link to another organization's website, along with instructions for accessing the report on that website. *The Notice clarifies that an organization must post the CHNA for each facility until the date on which its subsequent CHNA for that facility is posted.*

JOB #3: Adopt an Implementation Strategy by Hospital

Section 501(r) requires a hospital organization to adopt an implementation strategy to meet the needs identified through each CHNA. The Notice defines an “implementation strategy” as a written plan that addresses each of the needs identified in a CHNA by either (1) describing how the facility plans to meet the health need, or (2) identifying the health need as one that the facility does not intend to meet and explaining why the facility does not intend to meet it. A hospital organization may develop an implementation strategy in collaboration with other organizations, which must be identified in the implementation strategy. As with the CHNA, a hospital organization that operates multiple hospital facilities must have a separate written implementation strategy for each of its facilities.

Great emphasis has been given to work hand-in-hand with leaders from both hospitals and the local county health department. A common approach has been adopted to create the CHNA, leading to aligned implementation plans and community reporting.



IRS Notice 2011-52 Overview

Applicability of CHNA Requirements to “Hospital Organizations”

The CHNA requirements apply to “**hospital organizations**,” which are defined in Section 501(r) to include (1) organizations that operate one or more state-licensed hospital facilities, and (2) any other organization that the Treasury Secretary determines is providing hospital care as its principal function or basis for exemption.

Under Section 501(r), a hospital organization is required to conduct a CHNA for each of its hospital facilities once every three taxable years. ***The CHNA must take into account input from persons representing the community served by the hospital facility and must be made widely available to the public. The CHNA requirements are effective for taxable years beginning after March 23, 2012.*** As a result, a hospital organization with a June 30 fiscal year end must conduct an initial CHNA for each of its hospital facilities by June 30, 2013, either during the fiscal year ending June 30, 2013 or during either of the two previous fiscal years.

Determining the Community Served

A CHNA must identify and assess the health needs of the **community served** by the hospital facility. Although the Notice suggests that geographic location should be the primary basis for defining the community served, it provides that the organization may also take into account the target populations served by the facility (e.g., children, women, or the aged) and/or the facility’s principal functions (e.g., specialty area or targeted disease). *A hospital organization, however, will not be permitted to define the community served in a way that would effectively circumvent the CHNA requirements (e.g., by excluding medically underserved populations, low-income persons, minority groups, or those with chronic disease needs).*

Persons Representing the Community Served

Section 501(r) provides that a CHNA must take into account input from **persons who represent the broad interests of the community** served by the hospital facility, including individuals with special knowledge of or expertise in public health. Under the Notice, the persons consulted must also include: (1) government agencies with current information relevant to the health needs of the community and (2) representatives or members of medically underserved, low-income, and minority populations, and populations with chronic disease needs, in the community. In addition, a hospital organization may seek input from other individuals and organizations located in or serving the hospital facility’s defined community (e.g., health care consumer advocates, academic experts, private businesses, health insurance and managed care organizations, etc.).

Required Documentation The Notice provides that a hospital organization will be required to separately document the CHNA for each of its hospital facilities in a **written report** that includes the following information: 1) a description of the community served by the facility and how the community was determined; 2) a description of the process and methods used to conduct the CHNA; 3) the identity of any and all organizations with which the organization collaborated and third parties that it engaged to assist with the CHNA; 4) a description of how the organization considered the input of persons representing the community (e.g., through meetings, focus groups, interviews, etc.), who those persons are, and their qualifications; 5) a prioritized description of all of the community needs identified by the CHNA and an explanation of the process and criteria used in prioritizing such needs; and 6) a description of the existing health care facilities and other resources within the community available to meet the needs identified through the CHNA.

Making a CHNA Widely Available to the Public

The Notice provides that a CHNA will be considered to be “**conducted**” in the taxable year that the written report of the CHNA findings is made **widely available to the public**. The Notice also indicates that the IRS intends to pattern its rules for making a CHNA “widely available to the public” after the rules currently in effect for Forms 990. *Accordingly, an organization would make a facility’s written report widely available by posting on its website either (1) the report itself, in a readily accessible format, or (2) a link to another organization’s website, along with instructions for accessing the report on that website. The Notice clarifies that an organization must post the CHNA for each facility until the date on which its subsequent CHNA for that facility is posted.*

How and When to Adopt an Implementation Strategy

Section 501(r) requires a hospital organization to adopt an implementation strategy to meet the needs identified through each CHNA. **The Notice defines an “implementation strategy” as a written plan that addresses each of the needs identified in a CHNA by either (1) describing how the facility plans to meet the health need, or (2) identifying the health need as one that the facility does not intend to meet and explaining why the facility does not intend to meet it.** A hospital organization may develop an implementation strategy in collaboration with other organizations, which must be identified in the implementation strategy. As with the CHNA, a hospital organization that operates multiple hospital facilities must have a separate written implementation strategy for each of its facilities.

Under the Notice, an implementation strategy is considered to be “adopted” on the date the strategy is approved by the organization’s board of directors or by a committee of the board or other parties legally authorized by the board to act on its behalf. Further, the formal adoption of the implementation strategy must occur by the end of the same taxable year in which the written report of the CHNA findings was made available to the public. For hospital organizations with a June 30 fiscal year end, that effectively means that the organization must complete and appropriately post its first CHNA no later than its fiscal year ending June 30, 2013, and formally adopt a related implementation strategy by the end of the same tax year. *This final requirement may come as a surprise to many charitable hospitals, considering Section 501(r) contains no deadline for the adoption of the implementation strategy.*

II. Methodology

b. Collaborating CHNA Parties

Working together to improve community health takes collaboration. Listed below are in depth profiles of CHNA partners that collaborated to produce a comprehensive community health needs assessment for Cass County MO:

Connect Cass

ConnectCASS
Post Office Box 984
Harrisonville, Missouri 64701
Chris Molendorp, Executive Director
Connectcass.org

One Voice. One Mission. *ConnectCASS*.

Who We Are: Our mission is to provide leadership to enhance the whole health of every person in Cass County.

Where We Started: The Community Health Assessment Team (CHART) was a 501(c)(3) organization incepted in 1997. Seven boards of directors and members who represented multiple sectors within the County led CHART. CHART's accomplishments include:

- Abstinence education
- Suicide prevention program
- Initiatives to prevent child abuse and neglect
- Countywide resource directory
-

ConnectCASS aims to build on CHART's successes by establishing partnerships to identify, address and meet the whole health needs of the community. To learn more about our vision and values, we invite you to spend a little time on the web site or download our brochure. If you have questions and would like to learn more about *ConnectCASS*.

Our Vision: Our vision is Cass County will be a safe and healthy place with a strong sense of community and support for every person's ability to prosper.

Our Purpose: To achieve our vision, we will provide the following services to Cass County focused on two core strategic priorities: Health Services Access and Safe and Healthy Communities.

- ***Be a central resource and relationship broker.*** ConnectCASS will be an organization that seeks to involve both usual and unusual voices, and will look for and make connections between individuals and organizations for the purpose of making Cass County safe and healthy.
- ***Provide education:*** ConnectCASS will provide education to the community about the importance of health and wellness and its impact on the county as a whole.
- ***Engage in systems change:*** ConnectCASS will engage in strategies that support long-term, systemic impact.
- ***Leverage funding:*** ConnectCASS will seek opportunities to coordinate collaborations and partnerships that maximize and ensure the most efficient use of resources for the improvement of health in the county.

Cass County Health Department

300 S. Main Street

Harrisonville, Mo 64701

Office 816-380-8425

Fax 816-380-8450

Tiffany Klassen MHP, Health Director

www.casscountyhealth.com

THE THREE CORE PUBLIC HEALTH FUNCTIONS

1. Assessment
 - % Monitor health status to identify community health problems
 - % Diagnose and investigate health problems and health hazards in the community
 - % Evaluate effectiveness, accessibility, and quality of personal and population-based health services
2. Policy Development
 - % Develop policies and plans that support individual and community health efforts
 - % Enforce laws and regulations that protect health and ensure safety.
 - % Research for new insights and innovative solutions to health problems
3. Assurance
 - % Link people to needed personal health services and assure the provision of health care when otherwise unavailable
 - % Assure a competent public health and personal health care workforce
 - % Inform, educate, and empower people about health issues
 - % Mobilize community partnerships to identify and solve health problems

Ten Essential Services

1. Monitor health status to identify and solve community health problems
2. Diagnose and investigate health problems and health hazards in the community
3. Inform, educate and empower people about health issues
4. Mobilize community partnerships and action to identify and solve health problems
5. Develop policies and plans that support individual and community health efforts
6. Enforce laws and regulations that protect health and ensure safety
7. Link people to needed personal health services and assure the provision of health care when otherwise unavailable
8. Assure a competent public and personal health-care work force
9. Evaluate effectiveness, accessibility, & quality of personal and population-based health services
10. Research new insights and innovative solutions to health problems

Cass Regional Medical Center

2800 East Rock Haven Road
Harrisonville, MO 64701
816-380-3474
Chris Lang - CEO
<http://www.cassregional.org>

Cass Regional Medical Center is a general, acute care facility located in Harrisonville, Missouri, that serves the residents of Cass County, northern Bates County, northwestern Henry County, and western Johnson County in Missouri. As a critical access hospital, Cass Regional maintains a 21-bed medical/surgical unit, a 4-bed intensive care unit, and a 10-bed behavioral health unit.

Cass Regional traces its roots to Harrisonville Memorial Hospital, which was founded on the historic Harrisonville Square in 1946. In the early 1960s, the Memorial Hospital Association board began a drive to construct a new facility, and Cass County voters approved a \$400,000 bond issue for a new, 50-bed hospital. In 1963, Cass County Memorial Hospital opened at 1800 East Mechanic Street in Harrisonville.

In 1984, the hospital's name changed to Cass Medical Center to reflect its growing scope of services, and the original hospital building was expanded in 1982, 1988, and again in 1992. In October 2007, Cass Medical Center broke ground on a new, 138,000-square-foot replacement facility at 2800 East Rock Haven Road in Harrisonville, and in August 2008, the organization was renamed Cass Regional Medical Center to better describe the area it serves.

As part of its mission to provide accessible care to the communities it serves, Cass Regional established family practice clinics in the towns of Archie, Drexel, Garden City, Harrisonville, Peculiar, and Pleasant Hill during the 1990s and early to mid-2000s. In 2010, Cass Regional acquired Kingsville Medical Clinic, formerly Western Johnson County Medical Clinic. Today, more than 75,000 patient visits are experienced annually at Cass Regional and its affiliated locations. With more than 400 employees, Cass Regional is one of the largest employers in the region.

Cass Regional maintains the prestigious accreditation of The Joint Commission. The hospital is owned by Cass County, Missouri, and a five-member Board of Trustees elected by county citizens governs the organization. Current board members are Carole Arnold, Chris Benjamin, Katy Crabtree, Bryan Mallory, and Linda Sherman. While the Board of Trustees retains governance and operating control, Healthcare Corporation of America (HCA) Midwest Division manages Cass Regional under contract. Since 2003, the medical center's administration and other valuable services, including purchasing group membership, managed care contract negotiation, and strategic planning services, have been provided through this arrangement.

Our Mission

Cass Regional Medical Center is committed to serving the communities of Cass County and the surrounding region with:

- Compassionate;
- Customer-focused; and
- Professional healthcare services.

Our Vision

For every life we touch, Cass Regional Medical Center will be known for the passion of our people towards service excellence and our commitment to promoting wellness and expanding healthcare services for the communities we serve.

Our Values

At Cass Regional Medical Center, we believe in:

Our Family

Our roots run deep in this region that we are proud to call home. We cherish our relationships with our families, friends and neighbors, and believe that every patient, visitor, volunteer, physician and employee is a member of Cass Regional's extended family. We join together as a team everyday in both our hospital and our community-based clinics, where we share in each other's daily joys and struggles and are a source of encouragement and support for one another.

Stewardship

We stand on the shoulders of many people who have worked hard to make us what we are today, and it is our privilege to preserve and grow the resources that have been entrusted to us so that future generations may also benefit. We believe that through wise stewardship of our resources – human,

Services and Specialties

Behavioral Health (BHU)
Community/Occupational Health
Diabetes Education
Emergency
Intensive Care Unit
Laboratory
Medical Imaging
Sleep Lab
Specialists Clinic
Speech Therapy
Surgery
Weight Loss and Bariatric Surgery

financial, and environmental –we are best equipped to accomplish our greater purpose, which is to promote wellness, ease suffering and heal the sick and injured.

Kindness

We believe in the simple goodness of being nice to each other. We treasure the richness that our varied experiences, knowledge, skills and cultural backgrounds bring to our organization and our relationships with one another. We treat others as we want to be treated, and always try to see every situation from the other's perspective.

Respectfulness

We believe that every person has worth and deserves to be treated with honesty, fairness and understanding. Everyone, no matter their role in the organization, takes time to listen and to care, and we uphold our integrity by keeping our word and making sure our actions match our intentions. We have pride in our conduct and in our professional appearance, and seek to build each other up through a spirit of camaraderie, mutual trust and friendship.

Dedication

Delivering the highest quality care is of utmost importance, and we strive to consistently do our best for every patient, every time. We set high standards for ourselves, both in our personal and organizational codes of conduct. We can always be counted on to take pride and ownership in our work, and to lead by example, no matter the task.

Excellence

We are committed to continual improvement, and embrace challenges with confidence and optimism. We believe that we are lifelong learners, and that new and better ways to support the delivery of health care can always be discovered. We are open to innovative ideas and solutions, and constantly pursue advanced knowledge and technology so that our patients receive the best care possible.

Cardiac Rehabilitation
Medical/Surgical
Pharmacy
Pulmonary Rehabilitation
Physical/Occupational Therapy
Respiratory Therapy

Belton Regional Medical Center

17065 S. 71 Highway

Belton, MO 64012

(816) 348-1200

Todd Krass - CEO

<http://beltonregionalmedicalcenter.com>

Belton Regional Medical Center is one of 10 HCA Midwest Health System hospitals in the Kansas City and surrounding areas. Located conveniently at Highways 71 and 58 in Belton, Mo., Belton Regional Medical Center is a 71-bed acute care facility offering a full range of inpatient and outpatient services.

Mission: To touch lives with hope, healing, comfort and care.

Vision: Together we will be the provider and employer of choice in the communities we serve.

Values:

Compassion: Respond to our patient's needs with compassion and tenderness. Make customers and their needs a primary focus of our action. Develop and sustain productive customer relationships. Seek first to understand rather than to be understood.

Attitude: Display a caring and courteous attitude under all circumstances. Seek opportunities to work with each other to achieve our goals. Celebrate individual and team accomplishments.

Respect: Uphold the dignity of every individual. See and listen through the eyes and ears of others. Embrace a culturally diverse work environment. Take responsibility for all your actions

Excellence: Exceed the needs and expectations of those we serve. Assume responsibility and accountability for successfully completing assignments. Self-impose standards of excellence rather than having standards be imposed.

Services:

Cancer Care

Chemotherapy

Hematology

Oncology Clinic

Education & Support Groups

MS Support Group

Fibromyalgia Support Group

Emergency Services

Level III Certified Trauma Center

Intensive Care Unit

Laboratory

Radiology/Imaging Services

16-Slice CT

Biopsy-CT & US

Breast Imaging Center (with digital mammography)

MRI

Nuclear Medicine

Radiology

Ultrasound

Rehabilitation

Inpatient

Occupational Therapy

Outpatient

Physical Therapy

Speech Therapy

Sports Medicine ATCs

Sleep Lab Specialty Clinics

Allergy

Cardiology

Dermatology

Otolaryngology (ENT)

EMG

Endocrinology

Family Practice

Gastroenterology

Internal Medicine

Neurology

Orthopedics

Pain Management

Physiatrist

Podiatry

Urology

Surgical Services

Inpatient / Outpatient

Oral Maxillofacial

Orthopedic

Urological

Gynecologic

Podiatry

II. Methodology

b. Collaborating CHNA Parties (continue)

Consultant Qualifications



VV Research & Development, Inc.

Company Profile: 601 N. Mahaffie, Olathe, KS 66061-6431 (913) 302-7264

VINCE VANDEHAAR, MBA

Principal Consultant & Owner of VV Research & Development, Inc.

VV Research & Development, Inc. was incorporated on May 28th 2009. With over 30 years of business & faculty experience in helping both providers, payors, and financial service firms obtain their strategic planning, research & development needs, Vince brings in-depth health industry knowledge, research aptitude, planning expertise, and energy. VV Research & Development services are organized, formal processes of listening to the voice of the customer. Vince started his consulting business in May of 2009, after working for Saint Luke's Health System (SLHS) of Kansas City for 16 years. Note: Saint Luke's Hospital of Kansas City, SLHS's largest hospital, won the Malcolm Baldrige National Quality Award in March of 2003. The Baldrige examiners cited Vince's department as "Best Practice" in the areas of customer satisfaction, market research, and evaluation efforts (Kansas City Star 3/10/04).

VV Research & Development, INC. (Olathe, KS) consultants have in-depth experience helping hospitals work with local Health Departments to engage community residents & leaders to identify gaps between existing health community resources & needs, and construct detailed strategies to meet those needs - while still adhering to the hospital's mission and budget. Over the past 20 years, Vandehaar has completed 8 comprehensive Baldrige aligned Community Health Needs Assessments for Saint Luke's of Kansas City System facilities (3 campuses) and was contracted to conduct 2 additional independent Dept. of Health consulting projects (prior to IRS 990 regs). Currently in 2012, VV has 12 CHNA IRS aligned assessments underway for Kansas hospitals & Health Departments.

Vince Vandehaar, MBA is actively involved in the Kansas City community. He is a member the Greater Kansas City Employee Benefits Association, the Society for Healthcare Strategy & Market Development, the American Marketing Association Kansas City Chapter, and Co-Chair of the AMA Kansas City Healthcare Special Interest Group. In addition to these roles, from 2000 to 2008, Vince served as the state chairman for MHA's Data Committee and was a member of KHA's Data Taskforce.

Collaborating Consultants

Sarah Legg, Lead Project Coordinator & Planning Analyst

II. Methodology

c. CHNA & Town Hall Research Process

ConnectCass, a 501(c) 3 organization dedicated to the health and wellness of all Cass County residents has created a unique partnership with Cass Regional Medical Center to conduct a Community Health Needs Assessment (CHNA) in late Fall 2013. At that time an inquiry was made by Chris Molendorp ConnectCASS Executive Director to VVV Research & Development to explore the possibility of conducting a comprehensive IRS aligned CHNA for Cass County MO. On November 22nd, 2013 a meeting was held to learn more about ConnectCASS & Cass Regional Medical Center collaborative options. On that date VVV Research & Development INC reviewed: VVV Research & Development CHNA experience, CHNA requirements (in-depth regulations), CHNA development steps / options to meet IRS requirements, and next steps after option approval.

VVV CHNA Deliverables:

- Review previous Cass County CHNA work. Confirm Cass Regional Medical Center service area meets 75/25 % patient origin rule,
- Uncover/Document Basic Secondary Research – Health of County. Organized by 10 TABS,
- Conduct Town Hall Meeting to discuss secondary data and uncover/prioritize county health needs,
- Create/conduct CHNA online primary research for Cass County residents and
- Prepare and publish IRS-aligned CHNA report to meet requirements.

(NOTE: To ensure proper primary service for CRMC CHNA (75/25%), the following patient origin 3 years summary was generated and reported.)

Cass Regional Medical Center			MHA	HIDI	CRMC IP	CRMC OP	CRMC Inpatients			CRMC ER/ Outpatients		
#	ZIP	CITY	County	3 YR Accum	3 YR Total	3 YR Total	FFY10	FFY11	FFY12	FFY10	FFY11	FFY12
1	64701	Harrisonville, MO	CASS	42.0%	2,151	50,594	726	708	717	17,298	17,048	16,247
2	64747	Garden City, MO	CASS	51.0%	326	10,960	110	105	111	3,779	3,665	3,516
3	64080	Pleasant Hill, MO	CASS	59.7%	372	10,600	142	115	116	3,649	3,598	3,354
4	64078	Peculiar, MO	CASS	68.1%	303	10,157	85	107	111	3,044	3,583	3,531
5	64725	Archie, MO	CASS	72.5%	156	5,473	45	55	56	1,838	1,848	1,786
6	64012	Belton, MO	CASS	76.8%	103	5,206	29	42	33	1,551	1,791	1,865
7	64720	Adrian, MO	BATES	80.9%	156	5,077	55	53	48	1,622	1,689	1,766
8	64083	Raymore, MO	CASS	83.7%	115	3,356	40	29	46	1,089	1,091	1,177
9	64746	Freeman, MO	CASS	86.3%	95	3,204	34	32	29	1,041	1,059	1,104

The following chart (calendar of events) outlines approved ConnectCass CHNA roles & responsibilities:

Cass Regional Medical Center - CHNA Work Plan			
Project Timeline & Roles - Nov 2013 - March 2014			
Step	Date (Start-Finish)	LEAD	TASK
1	11/22/2013	VVV / CRMC	Hold CHNA Kickoff meeting with CRMC/ConnectCass CEOs
2	11/22/2013 ??	VVV	Signed VVV CHNA project quote, emailed back to VV
3	11/22/2013	VVV / CRMC	Request CRMC to send FFY 12, 11 and 10 IHA patient origin data to document service area.
4	11/25/2013	VVV	Send out REQCoimmInvite Excel file plus SchoolHealthdata Excel file for client input.
5	11/27/2013	VVV / CRMC	Prepare/send out PR story to local media announcing upcoming CHNA work (general story) Post Online CHNA survey: http://useyourlibraryvoice.wordpress.com/2013/12/19/what-do-you-think-about-healthcare-services-in-cass-county/
6	12/13/2013	VVV	Assemble & complete Secondary Research - Find / populate 10 TABS. Start Town Hall ppt
7	12/3/2013 or sooner	CRMC	Prepare/send out Community TOWN HALL invite letter. (Use PSA Required data file - joint signature (2). Use VVV letter sample format.)
8	12/3/2013	CRMC	Prepare/send out PR story to local media announcing upcoming Town Hall. VVV will mock-up PR release to media sources.
9	12/13/2013	VVV / CRMC	Conduct CHNA conference call TBD. Review Town Hall Secondary Research data (10 TABS) ppt.
10	12/17/2013	VVV	Conduct CHNA Town Hall. Dinner 5:30-7pm (Location TBD) Review Basic CHNA info RANK priorities.
11	12/27/2013	VVV	Complete Analysis - Release Draft 1- seek feedback from Leaders (Hospital & Health Dept.)
12	on or before 12/31/2013	VVV	Produce & Release CHNA report. CRMC will post CHNA PDF online.
13	FEB 2014 TDB	VVV / CRMC	Hold Stakeholder meetings to discuss CHNA needs and create CRMC Implementation Plan. (Note: This work has not been quoted yet.)
14	- March 2014	CRMC	Hold Board Meetings discuss CHNA needs and adopt Implementation plan/strategy. Communicate CHNA plan to community TBD.

To meet IRS aligned CHNA requirements, a four-phase methodology was reviewed and approved as follows:

Phase I – Discovery: Conduct a 30 minute conference call with CHNA client, hospitals and County Health Department. Review / confirm CHNA calendar of events, explain / coach client to complete required participants database and schedule / organize all Phase II activities.

Phase II – QUALIFY Community Need:

A) Conduct secondary research to uncover the following historical community health status for PSA. Use MHA, Vital Statistics, County Health Rankings, etc. to document “current state” of county health organized as follows:

TAB 1. Demographic Profile
TAB 2. Economic/Business Profile
TAB 3. Educational Profile
TAB 4. Maternal and Infant Health Profile
TAB 5. Hospitalization / Providers Profile
TAB 6. Behavioral Health Profile
TAB 7. Risk Indicators & Factors
TAB 8. Uninsured Profile
TAB 9. Mortality Profile
TAB 10. Preventative Quality Measures

B) Gather historical primary research to uncover public health needs, practices and perceptions for hospital primary service areas.

Phase III – QUANTIFY Community Need: Conduct 90 minute Town Hall meeting with required county PSA residents. (Note: At each Town Hall meeting, CHNA secondary data will be reviewed, facilitated group discussion will occur, and a group ranking activity to determine the most important community health needs will be administered.

Phase IV - Complete data analysis & create comprehensive Community Health Needs Assessment. Post CHNA report findings to meet IRS CHNA criteria.

After consideration of CHNA stakeholders (sponsoring hospital & local health department) the CHNA Basic option was selected with the following project schedule:

Phase I: Discovery.....	November 2013
Phase II: Secondary Research	December 2013
Phase III: Town Hall Meeting.....	Dec 17, 2013
Phase IV: Prepare / Release CHNA report.....	December 2013

Detail CHNA development steps include:

	Suggested Development Steps
Step # 1 Commitment	<i>Determine interest level of area healthcare leaders (Hospital, Health Dept, Schools, Churches, Physicians etc), hold community meeting.</i>
Step # 2 Planning	<i>Prepare brief Community Health Needs Assessment Plan - list goals, objectives, purpose, outcome, roles, community involvement, etc. Hold Community Kick-off meeting.</i>
Step # 3 Secondary Research	<i>Collect & Report Community Health Published Facts. Gather data health practice data from published secondary research sources i.e. census, county health records, behavioral risk factors surveillance, etc.</i>
Step # 4a Primary Research	<i>Conduct Community Roundtable (Qualitative Research). Review Secondary Research (Step3) with Community Stakeholders. Gather current opinions and identify health needs.</i>
Step # 4b Primary Research <Optional>	<i>Collect Community Opinions. (Quantitative Research). Gather current opinions (Valid sample size) regarding community health needs and healthcare practices. If appropriate, conduct Physician Manpower Assessment to determine FTE Physician need by specialty.</i>
Steps # 5 Reporting	<i>Prepare/Present comprehensive Community Health Needs Assessment report (to community leaders) with Recommended Actions to improve health . < Note: Formal report will follow IRS Notice 2011-52 regs ></i>
	VVV Research & Development INC 913 302-7264

Overview of Town Hall Community Priority Setting Process

Each community has a wealth of expertise to be tapped for CHNA development. For this reason, a town hall is the perfect forum to gather community insight and provide an atmosphere to objectively consensus build and prioritize county health issues.

All Town Hall priority-setting and scoring processes involve the input of key stakeholders in attendance. Individuals and organizations attending the Town Halls were critically important to the success of the CHNA. The following list outlines partners invited to Town Hall: local hospital, public health community, mental health community, free clinics, community-based clinics, service providers, local residents, community leaders, opinion leaders, school leaders, business leaders, local government, faith-based organizations and persons (or organizations serving them), people with chronic conditions, uninsured community members, low income residents, and minority groups.

Cass County MO community Town Hall was held over dinner on Tuesday December 17th 2014, at the Harrison Community Center. Vince Vandelaar and Sarah Legg facilitated this 1 ½ hour session with thirty six community attendees. (Note: a detail roster of Town Hall attendees is listed in Section V a. Over 250 key Cass County area health contacts were invited to attend.)

The following Town Hall agenda was conducted:

1. Welcome & Introductions
2. Review purpose for the CHNA Town Hall and roles in the process
3. Present / Review of historical County Health Indicators (10 TABS)
4. Present Preliminary Cass County CHNA primary research Key question results
5. Facilitate Town Hall participant discussion of data (probe health strengths / concerns). Reflect on size and seriousness of any health concerns cited and discuss current community health strengths.
6. Engage Town Hall participants to rank health needs (using 4 dots to cast votes on priority issues). Tally & rank top community health concerns cited.
7. Close meeting by reflecting on the health needs / community voting results. Inform participants on "next steps".

At the end of each Town Hall session, WV encouraged all community members to continue to contribute ideas to both hospital and health department leaders via email or personal conversations.

< NOTE: To review detail Town Hall discussion content, please turn to Section V for detail notes of session and activity card content reporting of open end comments.>

**Community Health Needs Assessment
Cass County MO Town Hall**



Vince Vandelaar, MBA
VVV Marketing & Development INC.
Consultant & Adjunct Marketing Professor

Olathe, Kansas 66061

VVV@VandelaarMarketing.com
www.vandelaarmarketing.com
913-302-7264


**Community Health Needs Assessment (CHNA)
Town Hall Discussion Agenda**

- I. Opening / Introductions (10 mins)
- II. Review CHNA Purpose & Process (10 mins)
- III. Review Current Regional "Health Status" --
Secondary Data by 10 TAB Categories &
Preliminary CHNA online results (35 mins)
- IV. Collect Community (Your) Health Perspectives
Hold Community Voting Activity. Determine MOST Important
Health areas to improve. (30 mins)
- V. Close / Next Steps (5 mins)

VVV Marketing & Development INC.

I. Introduction:

Background and Experience



Vince Vandelaar MBA, VVV Marketing & Development INC
Principal Consultant, Olathe, KS 913 302-7264

- > – Professional Consulting Services: Strategic Planning, Marketing Management, Business Research & Development Focus : Strategy , Research , Deployment.
- > – Over 25 years of experience with Tillinghast, BCBSKC, Saint Luke's

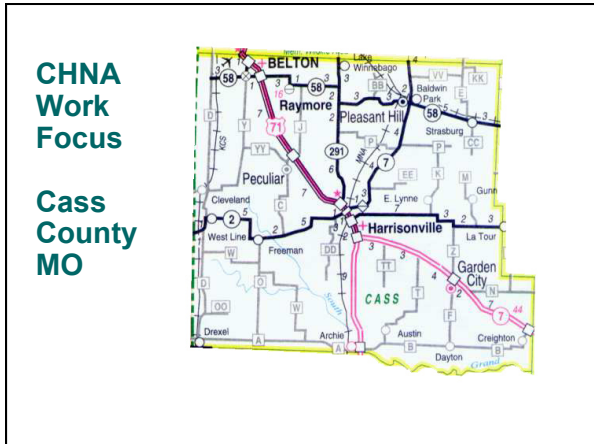
Adjunct Professor - Marketing / Health Admin.- 24 years +

- > Webster University (1988 – present)
- > Rockhurst University (2010 – present)

□ Sarah Legg MS, Planning Analyst

Town Hall Participation (You)

- All attendees welcome to share.
 - Parking Lot
- There are no right or wrong answers.
- Only one person speaks at a time.
- Please give truthful responses.
- Have a little fun along the way.



Community Health Needs Assessment Project Three Tasks to Complete

- 1) A "community health needs assessment" must include input from persons "representing the broad interests of the community served by the hospital facility," including those "with special knowledge of or expertise in public health." The assessment must be made widely available to the public - WEB
- 2) After CHNA report is released, an Implementation Plan will be assembled - Work with OTHERS to address needs .
- 3) Hospital Board must **ADOPT** several measures to address community health needs. (Documented in Board minutes, recorded on 990 and communicated to community.

I. Introductions: a conversation with the community. *Community members invited to CHNA Town Hall*

Consumers: Uninsured/underinsured people, Members of at-risk populations, Parents, caregivers and other consumers of health care in the community, and Consumer advocates.

Community leaders and groups: The hospital organization's board members, Local clergy and congregational leaders, Presidents or chairs of civic or service clubs - Chamber of Commerce, veterans' organizations, Lions, Rotary, etc., Representatives from businesses - owners/CEO's of large businesses (local or large corporations with local branches.), Business people & merchants (e.g., who sell tobacco, alcohol, or other drugs), Representatives from organized labor, Political, appointed and elected officials., Foundations., United Way organizations. And other "community leaders."

Public and other organizations: Public health officials, Directors or staff of health and human service organizations, City/Community planners and development officials, Individuals with business and economic development experience, Welfare and social service agency staff, Housing advocates - administrators of housing programs: homeless shelters, low-income-family housing and senior housing, Education officials and staff - school superintendents, principals and teachers, Public safety officials, Staff from state and area agencies on aging, Law enforcement agencies - Chiefs of police, Local colleges and universities, Coalitions working on health or other issues.

Other providers: Physicians, Leaders in other not-for-profit health care organizations, such as hospitals, clinics, nursing homes and home-based and community-based services, Leaders from Catholic Charities and other faith-based service providers, Mental health providers, Oral health providers, Health insurers, Parish and congregational nursing programs, Other health professionals

II. Purpose: Why conduct Community Health Needs Assessment?

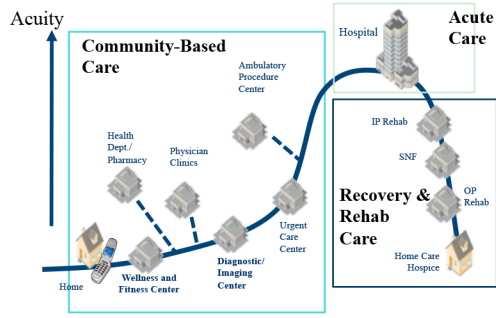
- To determine health-related trends and issues of the community.
- To understand/evaluate health delivery programs in place.
- To meet Federal requirements – both local hospital & Health Departments.
- To develop strategies to address unmet health needs. (Early 2014)

II. Review CHNA Definition

A Community Health Needs Assessment (CHNA) is a systematic collection, assembly, analysis, and dissemination of information about the health of the community. *<NOTE: Some of the data has already been collected (published) by local, state and federal public health organizations. Some data will be collected today.>*

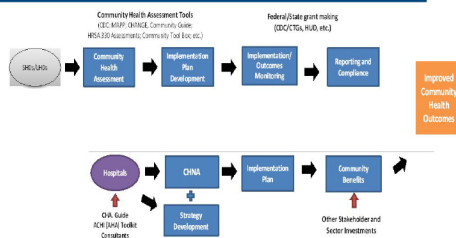
CHNA will identify factors that affect the health of a population and determine the availability of resources to adequately address those factors.

Future System of CARE Sg2



IP = inpatient; SNF = skilled nursing facility; OP = outpatient.

Community Health Needs Assessment Joint Process: ConnectCass, Providers and Public Health



II. Required Written Report IRS 990 Documentation

- a description of the community served
- a description of the CHNA process
- the identity of any and all organizations & third parties which collaborated to assist with the CHNA;
- a description of how the organization considered the input of persons representing the community (e.g., through meetings, focus groups, interviews, etc.), who those persons are, and their qualifications;
- a prioritized description of all of the community needs identified by the CHNA and
- a description of the existing health care facilities and other resources within the community available to meet the needs identified through the CHNA.

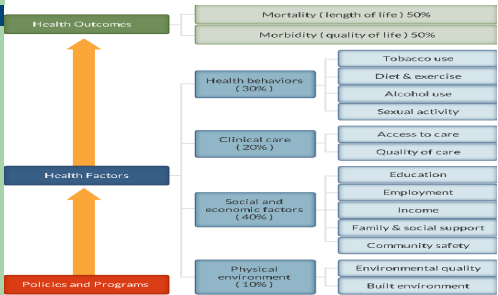
Secondary Data: “Source Files” for Missouri CHNA:

- Robert Wood Johnson County Health Rankings and Roadmaps (www.countyhealthrankings.org)
- U.S. Census Quick Facts (<http://quickfacts.census.gov/health.mo.gov/data/mica/mica/population.php> and 2010)
- MHA and MO Division of Alcohol and Drug Abuse and the Substance Abuse and Mental Health Services Administration
- Kansas City Health Matters – Community Health Data and Resources
- Kids Count Data (kidscount.org/datacenter)
- Medicare/Dartmouth Institute (2001-2005), Health Resources & Services Administration (2006)
- Diabetes and Obesity Data (<http://diabetes-obesity.findthedata.org/>)
- Vital Statistics: Maternal and Infant Health Profile, 2011 (PDF)
- Division of Comprehensive Psychiatric Services - Clinical Data

III. Review Current County “Health Status” – Secondary Data by 10 TAB Categories plus MO State Rankings

TAB 1. Demographic Profile
TAB 2. Economic/Business Profile
TAB 3. Educational Profile
TAB 4. Maternal and Infant Health Profile
TAB 5. Hospitalization / Providers Profile
TAB 6. Behavioral Health Profile
TAB 7. Risk Indicators & Factors
TAB 8. Uninsured Profile
TAB 9. Mortality Profile
TAB 10. Preventative Quality Measures

County Health Rankings from The Robert Wood Johnson Foundation & University of WI Health Institute



IV. Collect Community Health Perspectives Ask your opinion. Your thoughts?

- 1) Today: What are the *strengths* our community that contribute to health
- 2) Today: Are there healthcare services in your community / neighborhood that you feel *need to be improved and / or changed*?
- 3) Tomorrow: What is occurring or might occur *that affects the health of our community*?

V. Have we forgotten anything ?

- | | |
|-------------------------------|-----------------------------------|
| a.Aging Services | m.Hospice |
| b.Chronic Pain Management | n.Hospital Services |
| c.Dental Care/Oral Health | o.Maternal, Infant & Child Health |
| d.Developmental Disabilities | p.Nutrition |
| e.Domestic Violence, | r.Pharmacy Services |
| f.Early Detection & Screening | s.Primary Health Care |
| g.Environmental Health | t.Public Health |
| q.Exercise | u.School Health |
| h.Family Planning | v.Social Services |
| i.Food Safety | w.Specialty Medical Care Clinics |
| j.Health Care Coverage | x.Substance Abuse |
| k.Health Education | y.Transportation |
| l.Home Health | z. Other _____ |

Community Health Needs Assessment

Questions Next Steps ?

VVV Research & Development INC.

vmlvandehaar@aol.com
913 302-7264

II. Methodology

d. Community Profile (a description of community served)

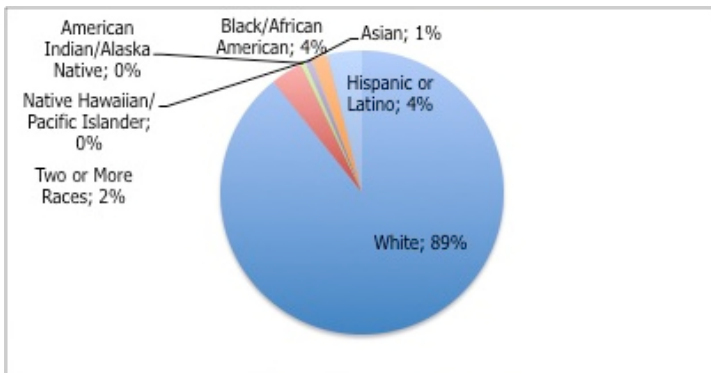
Cass County Missouri Community Profile



Demographics

The population of Cass County was estimated to be 100,376 in 2012, and had a 0.9% change in population from 2010–2012. The county covers 696.84 square miles.¹ The county has an overall population density of 142.8 persons per square mile, compared to the State average of 87.1 per square mile. The county was founded in the mid-1800's and the county seat is Harrisonville.² The county is located in central-western Missouri, and its economy is based on Construction, Agriculture and Food Service.³

Population by Race 2011



Major highway transportation: Interstate 49, Route 2, Route 7, Route 58, Route 291.

Homeownership in Cass County (78.8%) is higher than the state average (69.5%). The median price of an owner-occupied home is \$154,700 as compared to than the state at \$138,900.

Employment Many residents live in Cass County and work in KC metro area. The median household income in Cass County was \$60,807 from 2007-2011 versus the state median household income of \$47,202.⁴ In 2013 the average unemployment rate was 8.6%.⁵

¹ <http://quickfacts.census.gov/qfd/states/29/29037.html>

² http://en.wikipedia.org/wiki/Cass_County,_Missouri

³ http://www.city-data.com/county/Cass_County-MO.html

Detail Demographic Profile - Cass County MO

ZIP	NAME	County	Population:			Households			Per Capita	
			Yr2011	Yr2016	Chg	Yr2011	Yr2016	Avg Size	Income 11	
64012	BELTON	CASS, MO	27,763	29,436	6.0%	10,433	11,088	2.6	\$24,619	
64078	PECULIAR	CASS, MO	8,848	9,230	4.3%	3,236	3,398	2.7	\$25,454	
64080	PLEASANT HILL	CASS, MO	13,097	14,107	7.7%	4,811	5,185	2.7	\$27,093	
64083	RAYMORE	CASS, MO	21,004	22,732	8.2%	7,702	8,410	2.7	\$27,458	
64701	HARRISONVILLE	CASS, MO	14,890	15,667	5.2%	5,651	5,963	2.6	\$23,217	
64725	ARCHIE	CASS, MO	2,005	2,211	10.3%	744	816	2.7	\$20,046	
64734	CLEVELAND	CASS, MO	1,923	2,015	4.8%	720	761	2.7	\$28,228	
64746	FREEMAN	CASS, MO	1,452	1,544	6.3%	544	583	2.7	\$25,689	
64747	GARDEN CITY	CASS, MO	3,929	4,223	7.5%	1,502	1,619	2.6	\$22,927	
64742	DREXEL	CASS, MO	1707	1832	7.3%	697	755	2.5	\$23,439	
64739	CREIGHTON	CASS, MO	1055	1091	3.4%	418	436	2.5	\$22,389	
64743	EAST LYNNE	CASS, MO	303	304	0.3%	107	107	2.7	na	
64090	STRASBURG	CASS, MO	141	141	0.0%	54	54	2.7	na	
Totals			98,117	104,533	6.5%	36,619	39,175	2.6	\$24,596	

ZIP	NAME	County	Population 2011:			Age1530			Females	
			Yr2011	POP65p	%	GenX	MALES	FEMALES	Age20_35	
64012	BELTON	CASS, MO	27,763	3,408	12.3%	7,493	13,492	14,271	3,689	
64078	PECULIAR	CASS, MO	8,848	1,026	11.6%	2,148	4,398	4,450	1,021	
64080	PLEASANT HILL	CASS, MO	13,097	1,732	13.2%	3,148	6,442	6,655	1,593	
64083	RAYMORE	CASS, MO	21,004	2,956	14.1%	4,931	10,105	10,899	2,643	
64701	HARRISONVILLE	CASS, MO	14,890	2,335	15.7%	3,601	7,204	7,686	1,752	
64725	ARCHIE	CASS, MO	2,005	285	14.2%	489	996	1,009	244	
64734	CLEVELAND	CASS, MO	1,923	306	15.9%	361	965	958	149	
64746	FREEMAN	CASS, MO	1,452	215	14.8%	311	736	716	134	
64747	GARDEN CITY	CASS, MO	3,929	560	14.3%	933	1,986	1,943	443	
64742	DREXEL	CASS, MO	1707	281	16.5%	372	850	857	165	
64739	CREIGHTON	CASS, MO	1055	153	14.5%	232	539	516	108	
64743	EAST LYNNE	CASS, MO	303	41	13.5%	74	147	154	37	
64090	STRASBURG	CASS, MO	141	19	13.5%	35	68	72	17	
Totals			98,117	13,317	13.6%	24,128	47,929	50,186	11,995	

ZIP	NAME	County	Population 2011:				Hholds	Average	# of
			White	Black	AM IND	Hisp			
64012	BELTON	CASS, MO	24,092	1,445	163	2,236	10,433	\$64,968	5,945
64078	PECULIAR	CASS, MO	8,394	172	42	234	3,236	\$69,487	1,969
64080	PLEASANT HILL	CASS, MO	12,578	86	70	373	4,811	\$73,323	2,894
64083	RAYMORE	CASS, MO	18,515	1,557	100	744	7,702	\$74,213	5,184
64701	HARRISONVILLE	CASS, MO	14,207	151	97	354	5,651	\$59,429	2,933
64725	ARCHIE	CASS, MO	1,941	8	10	37	744	\$54,023	337
64734	CLEVELAND	CASS, MO	1,851	14	10	35	720	\$75,392	457
64746	FREEMAN	CASS, MO	1,405	10	4	20	544	\$68,566	314
64747	GARDEN CITY	CASS, MO	3,807	20	32	66	1,502	\$59,974	783
64742	DREXEL	CASS, MO	1662	11	6	17	697	\$57,404	352
64739	CREIGHTON	CASS, MO	1029	5	5	17	418	\$56,507	192
64743	EAST LYNNE	CASS, MO	na	na	na	na	107	na	na
64090	STRASBURG	CASS, MO	na	na	na	na	54	na	na
Totals			89,481	3,479	539	4,133	36,619	\$64,844	21,360

Source: ERSA Demographics

III. Community Health Status

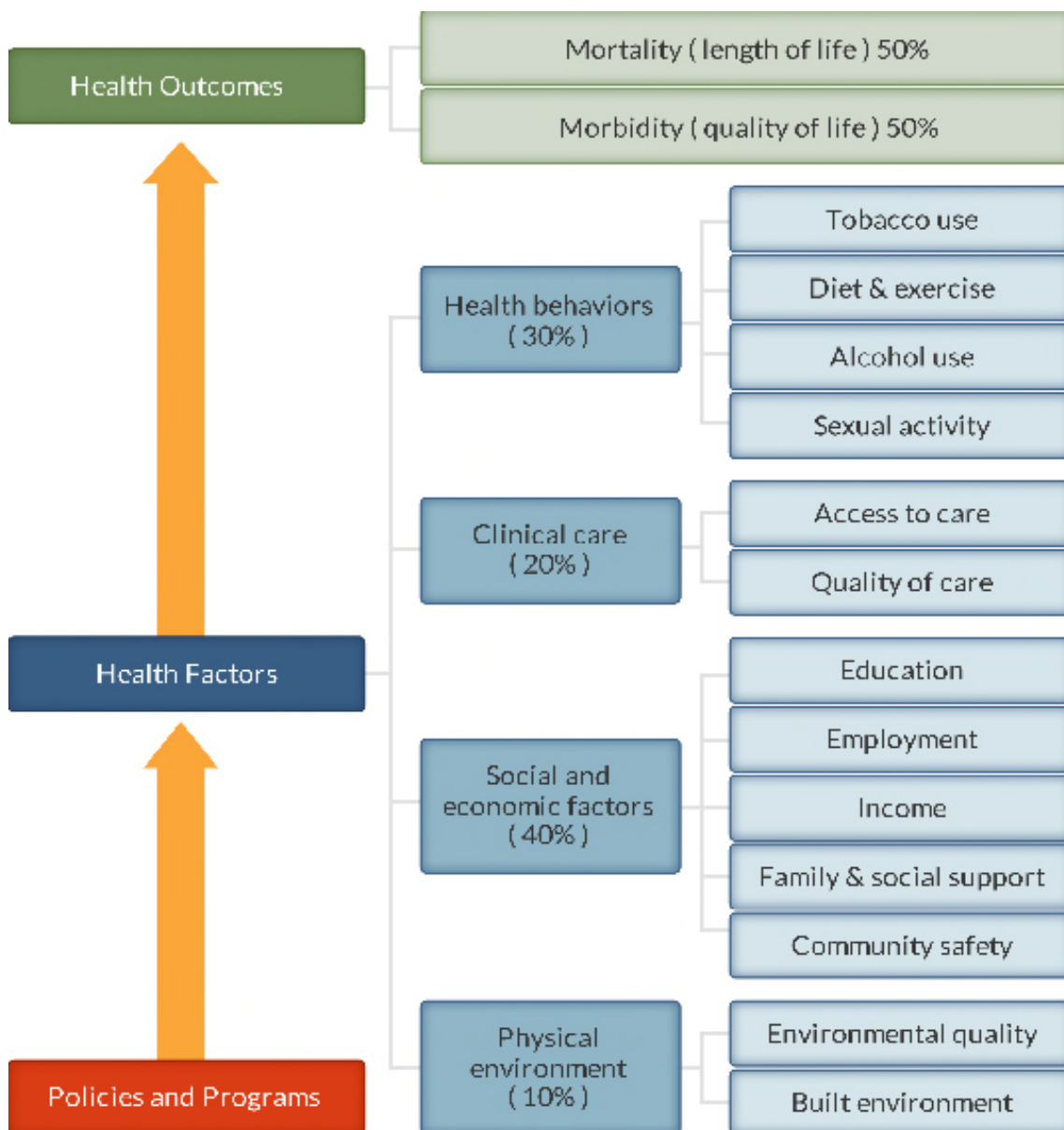
[VVV Research & Development INC]

II. Community Health Status

a. Secondary Research Findings (Historical Health Statistics)

Health Status Profile – Cass County MO

This section of the CHNA reviews published quantitative community health indicators and results of our recent CHNA Town Hall. To produce this profile, VVV Research & Development staff analyzed data from multiple sources. This analysis focuses on a set of published health indicators organized by ten areas of focus (10 TABS), results from the 2013 County Health Rankings and conversations from Town Hall primary research. (Note: The Robert Wood Johnson Foundation collaborates with the University of Wisconsin Population Health Institute to release annual *County Health Rankings*. As seen below in model, these rankings are based on a number of health factors.)



2013 State Health Rankings

County Health Rankings - RWJ & Univ of WI					
#	MO Rank of 115 counties	Definitions	Cass County MO	Trend	**MO Rural Counties Norm
1	Physical Environment	Air, Land, Water quality	25		56
2	Health Factors		17		67
2a	Clinical Care	Access to care / Quality of Care	19		75
2b	Social & Economic Factors	Education, Employment, Income, Family/Social support, Community Safety	14		66
3	Health Outcomes		17		67
3a	Health Behaviors	Tobacco Use, Diet/Exercise, Alcohol Use, Sexual Activitiy	55		59
3b	Morbidity	Quality of life	20		64
3c	Mortality	Length of life	20		68
** MO Rural Norm includes all rural MO "non MSA counties", exclude St. Louis, Kansas City, Cape Girardeau, Springfield, Joplin, Columbia, Jefferson City, St. Joseph, and Branson MSA counties.					
http://www.countyhealthrankings.org					

When considering the state of community health, it's important to review published health data by topic area. Below is a summary of key TABS of information collected:

Tab 1 Demographic Profile

#	Population History	2007	2008	2009	2010	2011	Trend
1	Cass County	96,845	98,095	98,835	99,478	100,052	3.3%
<i>Source: health.mo.gov/data/mica/mica/population.php and 2010</i>							
#	People QuickFacts	Cass County MO	Trend	Missouri	**MO Rural Counties Norm		
1	Veterans, 2007-2011 (Totals)	9,531		503,720	NA		
2	Living in same house 1 year & over, percent, 2007-2011	85.2%		83.5%	86.9%		
3	Foreign born persons, percent, 2007-2011	2.1%		3.8%	1.2%		
4	Persons per square mile, 2010	143		87	23		
5	Mean travel time to work (minutes), workers age 16+, 2007-2011	28.2		23.3	24.0		
6	Households, 2011 (Totals)	36,864		2,354,104	NA		
7	Homeownership rate, 2007-2011	78.8%		69.5%	75.0%		
8	Median value of owner-occupied housing units, 2007-2011	\$154,700		\$138,900	\$88,905		
9	Persons per household, 2007-2011	2.65		2.46	2.42		
10	Per capita money income in the past 12 months (2011 dollars)	\$27,129		\$25,371	\$19,230		
11	Median household income, 2007-2011	\$60,807		\$47,202	\$36,366		
12	Persons below poverty level, percent, 2007-2011	7.9%		14.3%	18.1%		

Tab 1 Demographic Profile (Con't)

#	Source: countyhealthrankings.com, 2012	Cass County	Trend	Missouri	**MO Rural Counties Norm
1	Children in poverty	15%		22%	30.4%
2	Fast food restaurants (lower better)	42%		47%	35.3%
3	Unemployment	8.6%		8.60%	8.9%
4	Rate of Violent Crime (per 1,000 population)	151		484	211
#	Source: countyhealthrankings.com, 2012	Cass County	Trend	Missouri	**MO Rural Counties Norm
1	Children in single-parent households	27%		33%	30.6%

Tab 2 Economic Profile

#	Business Quick Facts	Cass County	Trend	Missouri	**MO Rural Counties Norm
1	Private nonfarm establishments, 2011	1,823		147,274	335 (Aver)
2	Private nonfarm employment, 2011	17,176		2,298,295	3,162
3	Private nonfarm employment, percent change, 2010-2011	-3.4%		0.3%	-7.3%
4	Total number of firms, 2007	9,203		501,064	1220 (Aver)
5	Retail sales per capita, 2007	\$9,180		\$12,957	\$9,297
6	Women-owned firms, percent, 2007	27.7%		26.1%	12.5%
7	Merchant wholesaler sales, 2007 (\$1000)	\$351,585		81,032,913	\$65,167
8	Retail sales, 2007 (\$1000)	\$ 898,675		76,575,216	\$146,120
9	Accommodation and food services sales, 2007 (\$1000)	\$ 82,368.00		11,070,634	\$14,017
10	Building permits, 2012	160		12297	6.2 (Aver)

Tab 3 Public Schools Health Delivery Profile. Currently school districts are providing on site primary health screenings and basic care.

#	www.countyhealthrankings.org, 2012	Cass County MO	Trend	Missouri	**MO Rural Counties Norm
1	High school graduation	88.0%		80.0%	87.0%
2	Some college	64.0%		62.0%	46.0%
#	Missouri Hospital Association Social and Economic Factors, 2012	Cass County MO	Trend	Missouri	**MO Rural Counties Norm
1	Post-secondary education PSED	61.5%		47.6%	43.2
2	Illiteracy Rate	7.3%		9.1%	10.1
3	Percent of children eligible for free lunch	21.8%		39.3%	40.0%

Tab 3 Public Schools Health Delivery Profile (Con't Detail)

#	Indicators	Harrisonville R-9	Belton R-124	Cass-Midway R-1	Archie R-V	Drexel R-IV
1	Total # Public School Nurses	5	4	1	1	1
2	School Nurse is part of the IEP team	No	as needed	Yes	No	Yes
3	School Wellness Plan in place (Active)	Yes	No	Yes	Yes	Yes
4	VISION: # Screened / Referred to Prof / Seen by Professional	unknown	1386/245/17	unknown/not completed	166/4/3	271/20/10
5	HEARING: # Screened / Referred to Prof / Seen by Professional	695/30/5	1375/24/0	unknown/not completed	166/1/unknown	271/2/2
6	ORAL HEALTH: # Screened / Referred to Prof / Seen by Professional	unknown	1291/131/4	None	78/5/3	30/30/0
7	SCOLIOSIS: # Screened / Referred to Prof / Seen by Professional	500/0/0	None offered	unknown/not completed	No	50/0/0
8	# of Students served with no identified chronic health concerns	unknown	78%	unknown/not completed	554	280
9	School has a suicide prevention program	No	No	No	No	No
10	Compliance on required vaccinations (%)	99%	98%	99%	100%	100%

#	Indicators	East Lynne 40	Sherwood Cass R-8	Pleasant Hill R-3	Strasburg C-3	Raymore-Peculiar
1	Total # Public School Nurses	0	2	5	1	14
2	School Nurse is part of the IEP team	No	No	No	No	13 no but 1 is
3	School Wellness Plan in place (Active)	Yes	No	Yes	Yes	Yes
4	VISION: # Screened / Referred to Prof / Seen by Professional	142/10/unknown	350/12/5	not completed for 2013	2012: 104/0/0	unknown
5	HEARING: # Screened / Referred to Prof / Seen by Professional	142/0/0	300/30/6	665/5/3	unknown	unknown
6	ORAL HEALTH: # Screened / Referred to Prof / Seen by Professional	None	120/12/5	25 screened; no other results	None	unknown
7	SCOLIOSIS: # Screened / Referred to Prof / Seen by Professional	15/0/0	not completed for 2013	150/2/2	None	None
8	# of Students served with no identified chronic health concerns	125	687	537	83	unknown
9	School has a suicide prevention program	No	No	No	No	No
10	Compliance on required vaccinations (%)	100	100	99%	100%	100%

TAB 4 Maternal and Infant Health Profile. Tracking maternal & infant care patterns are vital in understanding the foundation of family health.

#	Vital Statistics: Maternal and Infant Health Profile, 2010	Cass Co MO	Trend	Missouri	**MO Rural Counties Norm
1	Total Live Births, 2011 (Totals)	1,197		76,069	NA
2	Percent Premature (<37 weeks)	10.8%		12.5%	12.0%
3	Births with Prenatal Care in First 3 Months	75.4%		NA	80.9%
4	Mother WIC Participant	38.5%		NA	57.4%
5	% of Mothers who Smoke Any Time During Pregnancy	21.2%		18.3%	26.1%
6	% of Mothers who Drank Any Time During Pregnancy	NA		4.2%	2.8%

Source: <http://health.mo.gov/data/vitalstatistics/mvs09/Table10B.pdf>

#	www.countyhealthrankings.org, 2012	Cass Co MO	Trend	Missouri	**MO Rural Counties Norm
1	Low birth weight	6.7%		8.1%	7.7%
2	Teen birth rate per 1000	31.0		42	51

#	Vital Statistics: Age-Group of Mothers, 2011 (%)	Cass County	Trend	Missouri	**MO Rural Counties Norm
2	Under 15	0.2%		0.1%	0.1%
3	15-17	2.9%		2.5%	3.2%
4	18-19	4.7%		6.7%	9.8%
5	20-24	24.6%		26.5%	34.6%
6	25-29	31.9%		30.5%	29.0%
7	30-34	25.3%		23.0%	15.3%
8	35-39	9.0%		8.8%	6.5%
9	40 & Over	1.5%		1.9%	1.5%

Source: <http://health.mo.gov/data/vitalstatistics/mvs09/Table10B.pdf>

TAB 5 Hospitalization/Provider Profile Understanding provider access and disease patterns are fundamental in healthcare delivery. Listed below are several vital county statistics.

#	Missouri Hospital Association, 2010	Cass County MO	Trend	Missouri	**MO Rural Counties Norm
1	Primary Care Provider Rate per 100,000	33.2		51.7	44.5

Source: Medicare/Dartmouth Institute (2001-20)

#	countyhealthrankings.org, 2012	Cass County MO	Trend	Missouri	**MO Rural Counties Norm
1	Preventable hospital stays per 1000 disc	70.0		73.0	88.9
2	PCP Ratio (# people served per PCP	4,156:1		1,495:1	3,352:1

#	Kansas City Health Matters	Cass County	Trend	KC Norm
1	Emergency Room Visit Rate per 1000	341		387
2	Hospital Admission Rate per 100,000	1,068		1172

TAB 5 Hospitalization/Provider Profile (Con't)

#	MHA HIDI - Market CASS County MO	FFY 2010	FFY 2011	FFY 2012	Trend
1	Total Discharges (All IP)	11,892	11,800	12,151	
2	Total IP Discharges-Age 45-64	2,590	2,630	2,646	
3	Total IP Discharges-Age 65+	4,096	4,104	3,270	
4	Psychiatric	919	927	1,180	
5	Obstetric	1,289	1,183	1,224	
6	Surgical %	26.4%	25.6%	22.9%	

Cass Regional Medical Center		Historical Patient Volumes			
#	Total Patients	YR2010	YR2011	YR2012	Trend
1	Total Inpatient discharges (All zips)	1,725	1,613	1,691	
2	Total Emergency Visits	13,931	14,470	14,915	
3	Total Outpatient Visits	38,773	38,469	37,691	
4	Total Clinic (Physician) visits	42,157	48,747	51,998	

Source Hospital Internal Records

Belton Regional Medical Center		Historical Patient Volumes			
#	Total Patients	YR2010	YR2011	YR2012	Trend
1	Total Inpatient discharges (All zips)	1,569	1,648	1,862	
2	Total Emergency Visits	17,459	18,710	19,386	
3	Total Outpatient Visits	23,235	23,883	25,314	
4	Total Clinic (Physician) visits	38,287	44,835	49,301	

Source Hospital Internal Records

TAB 6 Social & Rehab Services Profile. Behavioral health care provide another important indicator of community health status. Below is a summary of limited information:

#	Kids Count - Health/Mental Health	Cass County	Trend	Missouri	**MO Rural Counties Norm
1	Children receiving services for serious emotional disorders	190		26,755	85 (Aver)
2	Juvenile law violation referrals	40		28,292	55

#	Division of Comprehensive Psychiatric Services - Clinical Data - Cass County Only	2011	2012	Trend
1	Adjustment Disorder	62	49	
2	Anxiety Disorder	187	206	
3	Dementia	0	0	
4	Developmental Disorder	7	0	
5	Impulse Control Disorder	141	144	
6	Mood Disorder	376	366	
7	Psychotic Disorder	87	84	

People Who Received Clinical Treatment from the Division of Comprehensive Psychiatric Services: The total number of diagnoses is larger than the number served because some individuals had more than one type of disorder. *Counts under 5 suppressed to protect identities

TAB 7 Health Risk Profiles. Knowing community health risk factors and disease patterns can aid in the understanding “next steps” to improve health. Being overweight/obese; smoking, drinking in excess, not exercising etc can lead to poor health.

#	www.countyhealthrankings.org, 2012	Cass County	Trend	Missouri	**MO Rural Counties Norm
1	Adult obesity	33.0%		31.0%	31.5%
2	Adult smoking	23.0%		23.0%	23.4%
3	Excessive drinking	14.0%		17.0%	12.2%
4	Inadequate social support	15.0%		19.0%	17.8%
5	Physical inactivity	28.0%		28.0%	31.8%
6	Poor mental health days	3.5		3.8	3.8
7	Poor physical health days	3.5		3.7	4.4
8	Sexually transmitted infections (#)	273		435	162
#	www.countyhealthrankings.org, 2012	Cass County	Trend	Missouri	**MO Rural Counties Norm
1	Air Pollution Particulate Matter Days	9.2		10.6	10.62
2	Lead Risk Housing	NA		NA	NA
3	Exposure to Poor Water Quality	4%		5%	NA
#	Missouri Hospital Association, 2012	Cass County	Trend	Missouri	**MO Rural Counties Norm
1	HIV rate per 100,000	58.0		110.0	72.7
2	Poor or Fair Health	14.0%		20.9%	19.9%

TAB 8 Uninsured Profiles. Based on synthetic estimations, the number of insured is documented below. Also, the amount of charity care (last 3 years of free care) from area providers is trended below.

#	www.countyhealthrankings.org, 2012	Cass County	Trend	Missouri	**MO Rural Counties Norm
1	Uninsured	13-15%		15.0%	22.9%
#	Kids Count - Children enrolled in MO HealthNet for Kids	Cass County	Trend	Missouri	**MO Rural Counties Norm
1	2008	5,933		476,386	1,392
2	2007	5,547		472,387	1,395
3	2006	5,264		471,913	1,405
Source Hospital Internal Records					
Cass Regional Medical Center \$ (000)					
		YR10	YR11	YR12	Trend
1	Bad Debt.. Have Insurance Cant' Pay Bill	\$7,085	\$7,985	\$10,337	
2	Charity Care .. Free Care given	\$1,157	\$1,316	\$1,436	
Totals		\$8,242	\$9,301	\$11,773	
Belton Regional Medical Center \$ (000)					
		YR10	YR11	YR12	Trend
1	Bad Debt.. Have Insurance Cant' Pay Bill	4,791	5,375	6,557	
2	Charity Care .. Free Care given	3,960	4,675	4,675	
Totals		\$8,751	\$10,050	\$11,232	

TAB 9 Mortality Profile. The leading causes of county deaths are listed below. Areas of higher than expected are so noted.

#	2011 Vital Statistics Cause of Death	Cass County MO	Mix %	Missouri	Mix %	Trend
	TOTALS	759	100.0%	55,599	100.0%	
1	Cancer	185	24.4%	12,403	22.3%	
2	Heart disease	160	21.1%	13,746	24.7%	
3	Other diseases (residual)	160	21.1%	6,559	11.8%	
4	Chronic lower respiratory diseases	58	7.6%	3,483	6.3%	
5	Alzheimer's disease	47	6.2%	1,916	3.4%	
6	Cerebrovascular disease (Stroke)	40	5.3%	3,010	5.4%	
7	Kidney disease (nephritis/nephrotic syndrome/nephrosis)	24	3.2%	1,251	2.3%	
8	Diabetes	18	2.4%	1,421	2.6%	
9	Pneumonia and influenza	15	2.0%	1,200	2.2%	
10	Essential hypertension	11	1.4%	458	0.8%	
11	Motor vehicle accidents	10	1.3%	830	1.5%	
12	Suicide	10	1.3%	921	1.7%	
13	Septicemia	8	1.1%	794	1.4%	
14	Homicide	5	0.7%	416	0.7%	

TAB 10 Preventive Health Profile. The following table reflects future health of county. This information also is an indicator of community awareness of preventative measures.

#	www.countyhealthrankings.org, 2012	Cass County MO	Trend	Missouri	**MO Rural Counties Norm
1	Diabetic screening	85.0%		85%	84.2%
2	Limited access to healthy foods	8.0%		6%	8.4%
3	Mammography screening	64.0%		64%	57.0%

#	Future Data	Cass County	Trend	Missouri	**MO Rural Countys Norm
1	Annual check-up visit PCP (past year)	NA		NA	NA
2	Annual check-up visit to Dentist (past year)	NA		NA	NA
3	Annual check-up visit to Eye Doctor (past year)	NA		NA	NA

Primary Research Findings

CassConnect also requested primary research to be conducted. In the first week of December 2013, a CHNA online survey was created to connect community data (see Section V for survey content). On Jan 6th, 2014 2,200 paper surveys will be distributed (mailed/handed out) to randomly selected Cass County residents. (Note: Below are key CHNA Cass County findings as of 2/21/14 N=511):

CASS County MO - CHNA Returns				
ZIP	NAME	Sample	Replies	%
64012	BELTON	553	136	24.6%
64701	HARRISONVILLE	392	120	30.6%
64083	RAYMORE	411	89	21.7%
64078	PECULIAR	233	58	24.9%
64080	PLEASANT HILL	333	46	13.8%
64747	GARDEN CITY	104	19	18.3%
64725	ARCHIE	64	12	18.8%
64742	DREXEL	NA	6	NA
64734	CLEVELAND	51	4	7.8%
64739	CREIGHTON	NA	3	NA
64090	STRASBURG	8	2	25.0%
64746	FREEMAN	42	2	4.8%
64743	EAST LYNNE	9	1	11.1%
Other Replies - Cass Co			13	
TOTALS	Overall CASS Co	2200	511	23.2%
	S Cass zips only (No	1647	372	22.6%

Community Healthcare Needs Assessment 2013_14							
In general, how would you rate the overall quality of the healthcare delivered to your community?	CHNA NORM (22) N=8496	%	Cass County MO N=511	%	South Cass Co only N=372	%	Trend
Top 2 Boxes		78.7%		71.0%		69.6%	
Very Good	2,493	28.8%	93	19.0%	62	17.3%	
Good	4,316	49.9%	255	52.0%	187	52.2%	
Fair	1,517	17.5%	121	24.7%	93	26.0%	
Poor	266	3.1%	16	3.3%	12	3.4%	
Very Poor	60	0.7%	5	1.0%	4	1.1%	
Totals	8,652	100%	490	100.0%	358	100.0%	
<i>* Norm is composed of 22 CHNA community surveys from IA, KS and MO. S Cass County values do not include Belton MO replies.</i>							

Are you. . . ?	CHNA NORM (22) N=8496	% Yes	Cass County MO N=511	%	South Cass Co only N=372	%	Trend
Eating right daily (fruits/vegs/breads)	3,435	50.7%	293	58.3%	209	59.8%	
Using tobacco products weekly	736	9.1%	71	15.2%	55	13.8%	
Exercising 2-3 times weekly	3,633	50.2%	306	60.8%	227	59.0%	
Consuming Alcohol More than One Drink Daily	479	5.1%	44	9.2%	31	9.6%	
Receiving an annual flu shot	4,023	66.6%	329	65.0%	243	63.4%	

Table below outlines Cass County perceptions of satisfaction with HC services .

Lower scores are better.

Community Healthcare Needs Assessment 2013_14	Poor / Very Poor %										
How satisfied are you with each of the following . . . ?	CHNA NORM(22) N=8496	Cass County MO N=511	South Cass Co only N=372	Trend	Very Good	Good	Fair	Poor	Very Poor	N/A	Valid N
a) Ambulance Service	3.5%	6.5%	4.2%		92	186	68	15	9	129	370
b) Child Care	9.2%	8.6%	12.3%		43	149	73	20	5	201	290
c) Chiropractor	4.8%	4.5%	6.4%		59	152	67	11	2	206	291
d) Dentists	7.9%	9.0%	5.7%		101	185	87	28	9	85	410
e) Emergency Room	10.6%	22.1%	9.4%		64	156	121	57	40	66	438
f) Eye Doctor / Optometrist	5.5%	6.4%	4.7%		128	193	59	18	8	95	406
g) Family Planning Services	14.5%	14.6%	31.9%		34	98	55	25	7	276	219
h) Home Health	6.3%	3.0%	11.2%		107	137	45	6	3	203	298
i) Hospice	4.9%	2.2%	10.2%		117	116	38	3	3	218	277
j) Hospital Inpatient Services	5.4%	6.0%	7.0%		108	178	73	14	9	115	382
k) Mental Health Services	30.6%	21.1%	34.4%		36	92	93	39	20	212	280
l) Nursing Home	13.3%	22.4%	14.6%		31	97	107	52	16	192	303
m) Outpatient Services	4.0%	3.0%	3.2%		128	198	64	8	4	93	402
n) Pharmacy	2.1%	1.7%	1.6%		190	235	36	7	1	29	469
o) Primary Care Doctors	4.4%	3.0%	4.5%		182	209	56	11	3	32	461
p) Public Health Department	5.7%	4.1%	15.8%		93	172	88	8	7	125	368
q) School Nurse	7.7%	7.7%	7.3%		74	131	59	18	4	205	286
r) Specialist Physician care	10.4%	10.7%	13.7%		105	154	82	28	13	110	382

* Norm is composed of 22 CHNA community surveys from IA, KS and MO. S Cass County values do not include Belton MO replies.

Community Healthcare Needs Assessment 2013_14	Major Problem %								
In your opinion, how much of a problem are the following causes of diseases or disability in your community?	CHNA NORM (22) N=8496	Cass County MO N= 511	South Cass MD only N=372	Trend	Not a Problem	Somewhat of a Problem	Major Problem	Don't Know	Valid N
Cancer	52.5%	39.6%	38.6%		12	151	230	108	501
Diabetes	55.2%	57.8%	58.9%		7	142	255	98	502
Substance Abuse	60.6%	63.3%	62.9%		12	80	340	69	501
Heart Disease	46.1%	47.8%	46.7%		16	195	186	102	499
Sexually Transmitted Dis	22.0%	22.2%	23.2%		29	144	73	253	499
Mental Disorders	38.1%	44.0%	45.1%		13	160	162	163	498
Obesity	61.7%	67.7%	68.0%		8	140	295	60	503
Pneumonia / Flu	17.2%	16.9%	16.9%		50	255	63	132	500
Respiratory Disease	27.4%	30.2%	29.6%		29	215	108	146	498
Stroke	22.8%	23.9%	24.9%		28	225	79	165	497
Suicide	16.9%	13.3%	14.9%		47	181	41	232	501
Trauma	15.3%	16.0%	15.2%		45	182	63	208	498

* Norm is composed of 22 CHNA community surveys from IA, KS and MO. S Cass County values do not include Belton MO replies.

Table below tallies Cass County opinions regarding areas of health focus.

Community Healthcare Needs Assessment 2013_14							
In your opinion, what areas need additional education or attention in our community? (Check all that apply)	CHNA NORM (22) N=8496	%	Cass County MO N=511	%	South Cass Co only N=372	%	Trend
a) Abuse / Violence	3,317	5.4%	241	5.8%	182	5.9%	
b) Aging (Dementia)	3,399	5.6%	221	5.3%	166	5.4%	
c) Alcohol	3,286	5.4%	201	4.8%	157	5.1%	
d) Alternative Medicine	1,976	3.2%	144	3.5%	107	3.5%	
e) Child Care	1,810	3.0%	110	2.7%	88	2.9%	
f) Chronic Diseases	2,065	3.4%	140	3.4%	107	3.5%	
g) Family Planning / Birth Control	2,284	3.7%	142	3.4%	105	3.4%	
h) Lead Exposure	512	0.8%	16	0.4%	13	0.4%	
i) Mental Illness	3,417	5.6%	229	5.5%	163	5.3%	
j) Neglect	1,881	3.1%	132	3.2%	96	3.1%	
k) Nutrition	3,359	5.5%	251	6.1%	191	6.2%	
l) Obesity	4,976	8.1%	333	8.0%	244	7.9%	
m) Ozone (Air Quality)	370	0.6%	20	0.5%	16	0.5%	
n) Pain Management	2,290	3.7%	136	3.3%	102	3.3%	
o) Poverty	2,739	4.5%	192	4.6%	138	4.5%	
p) Preventative Healthcare	3,312	5.4%	223	5.4%	168	5.5%	
q) Sexually Transmitted Diseases	1,411	2.3%	83	2.0%	61	2.0%	
r) Suicide	1,934	3.2%	114	2.7%	86	2.8%	
s) Teen Pregnancy	2,971	4.9%	161	3.9%	111	3.6%	
t) Tobacco Use	2,947	4.8%	193	4.7%	139	4.5%	
u) Uninsured	3,148	5.1%	212	5.1%	150	4.9%	
v) Vaccinations / Immunizations	1,302	2.1%	100	2.4%	75	2.4%	
w) Water Quality	1,473	2.4%	58	1.4%	48	1.6%	
x) Wellness Education	2,911	4.8%	194	4.7%	140	4.6%	
y) Drugs	1,250	2.0%	199	4.8%	151	4.9%	
z) Gambling	267	0.4%	26	0.6%	15	0.5%	
aa) Injury Prevention	268	0.4%	37	0.9%	26	0.8%	
Other (please specify)	549	0.9%	40	1.0%	26	0.8%	
TOTALS	61,226	100.0%	4148	100.0%	3071	100.0%	

* Norm is composed of 22 CHNA community surveys from IA, KS and MO. S Cass County values do not include Belton MO replies.

IV. Inventory of Community Health Resources

[VVV Research & Development INC]

Inventory of Health Services - Cass County MO				
Cat	HC Services Offered in county: Yes / No	Hospital	HLTH Dept	Private
Clinic	Primary Care	yes	no	yes
Hosp	Alzheimer Center	no	no	yes
Hosp	Ambulatory Surgery Centers	yes	no	no
Hosp	Arthritis Treatment Center	no	no	no
Hosp	Bariatric/weight control services	yes	no	yes
Hosp	Birthing/LDR/LDRP Room	no	no	no
Hosp	Breast Cancer	yes	no	no
Hosp	Burn Care	no	no	no
Hosp	Cardiac Rehabilitation	yes	no	no
Hosp	Cardiac Surgery	no	no	no
Hosp	Cardiology services	yes	no	no
Hosp	Case Management	yes	no	no
Hosp	Chaplaincy/pastoral care services	yes	no	yes
Hosp	Chemotherapy	yes	no	no
Hosp	Colonoscopy	yes	no	no
Hosp	Crisis Prevention	yes	no	yes
Hosp	CTScanner	yes	no	no
Hosp	Diagnostic Radioisotope Facility	yes	no	no
Hosp	Diagnostic/Invasive Catheterization	yes	no	no
Hosp	Electron Beam Computed Tomography (EBCT)	no	no	no
Hosp	Enrollment Assistance Services	yes	no	yes
Hosp	Extracorporeal Shock Wave Lithotripter (ESWL)	no	no	no
Hosp	Fertility Clinic	no	no	no
Hosp	FullField Digital Mammography (FFDM)	yes	no	no
Hosp	Genetic Testing/Counseling	yes	no	no
Hosp	Geriatric Services	yes	no	yes
Hosp	Heart	yes	no	no
Hosp	Hemodialysis	yes	no	yes
Hosp	HIV/AIDS Services	yes	no	no
Hosp	Image-Guided Radiation Therapy (IGRT)	no	no	no
Hosp	Inpatient Acute Care - Hospital services	yes	no	no
Hosp	Intensity-Modulated Radiation Therapy (IMRT) 161	no	no	no
Hosp	Intensive Care Unit	yes	no	no
Hosp	Intermediate Care Unit	no	no	no
Hosp	Interventional Cardiac Catheterization	yes	no	no
Hosp	Isolation room	yes	no	no
Hosp	Kidney	yes	no	yes
Hosp	Liver	no	no	no
Hosp	Lung	yes	no	no
Hosp	Magnetic Resonance Imaging (MRI)	yes	no	no
Hosp	Mammograms	yes	no	yes
Hosp	Mobile Health Services	no	no	no
Hosp	Multislice Spiral Computed Tomography (<64 slice CT)	yes	no	no
Hosp	Multislice Spiral Computed Tomography (<64+ slice CT)	yes	no	no
Hosp	Neonatal	no	no	no
Hosp	Neurological services	yes	no	yes
Hosp	Obstetrics	yes	no	no
Hosp	Occupational Health Services	yes	no	yes
Hosp	Oncology Services	yes	no	no
Hosp	Orthopedic services	yes	no	yes
Hosp	Outpatient Surgery	yes	no	no
Hosp	Pain Management	yes	no	yes
Hosp	Palliative Care Program	yes	no	yes
Hosp	Pediatric	yes	no	yes
Hosp	Physical Rehabilitation	yes	no	yes
Hosp	Positron Emission Tomography (PET)	no	no	no
Hosp	Positron Emission Tomography/CT (PET/CT)	yes	no	no
Hosp	Psychiatric Services	yes	no	yes

Inventory of Health Services - Cass County MO				
Cat	HC Services Offered in county: Yes / No	Hospital	HLTH Dept	Private
Hosp	Radiology, Diagnostic	yes	no	yes
Hosp	Radiology, Therapeutic	yes	no	no
Hosp	Reproductive Health	yes	no	no
Hosp	Robotic Surgery	no	no	no
Hosp	Shaped Beam Radiation System 161	no	no	no
Hosp	Single Photon Emission Computerized Tomography	no	no	no
Hosp	Sleep Center	yes	no	no
Hosp	Social Work Services	yes	no	yes
Hosp	Sports Medicine	yes	no	yes
Hosp	Stereotactic Radiosurgery	no	no	no
Hosp	Swing Bed Services	yes	no	yes
Hosp	Transplant Services	no	no	no
Hosp	Trauma Center -Level IV	yes	no	no
Hosp	Ultrasound	yes	no	yes
Hosp	Women's Health Services	yes	no	yes
Hosp	Wound Care	yes	no	no
SR	Adult Day Care Program	no	no	yes
SR	Assisted Living	no	no	yes
SR	Home Health Services	no	no	yes
SR	Hospice	no	no	yes
SR	LongTerm Care	no	no	yes
SR	Nursing Home Services	no	no	yes
SR	Retirement Housing	no	no	yes
SR	Skilled Nursing Care	yes	no	yes
ER	Emergency Services	yes	no	no
ER	Urgent Care Center	no	no	yes
ER	Ambulance Services	no	no	yes
SERV	Alcoholism-Drug Abuse	no	no	yes
SERV	Blood Donor Center	no	no	no
SERV	Chiropractic Services	no	no	yes
SERV	Complementary Medicine Services	no	no	yes
SERV	Dental Services	no	no	yes
SERV	Fitness Center	no	no	yes
SERV	Health Education Classes	yes	yes	yes
SERV	Health Fair (Annual)	yes	no	yes
SERV	Health Information Center	yes	no	yes
SERV	Health Screenings	yes	no	yes
SERV	Meals on Wheels	no	no	yes
SERV	Nutrition Programs	yes	yes	yes
SERV	Patient Education Center	yes	no	no
SERV	Support Groups	yes	no	yes
SERV	Teen Outreach Services	no	no	yes
SERV	Tobacco Treatment/Cessation Program	yes	no	yes
SERV	Transportation to Health Facilities	no	no	yes
SERV	Wellness Program	yes	yes	yes

Providers Delivering Care in Cass County MO Service Area

# of FTE Providers working in county	FTE Physicians			FTE Allied Staff
	County Based @ CRMC	County Based @ Belton	Visting DRs *	PA / NP @ CRMC
Primary Care:				
Family Practice	11.6	6.0	3.0	9.5
Internal Medicine / Geriatrician	1.0	1.0	2.0	
Obstetrics/Gynecology	0.3	4.0	0.1	0.2
Pediatrics	0.0	0.0	0.0	
Medicine Specialists:				
Allergy/Immunology	0.0	1.0	0.0	
Cardiology	1.4	8.0	0.6	1.0
Dermatology	0.5	0.0	0.0	
Endocrinology	0.1	0.0	0.0	
Gastroenterology	0.0	0.0	5.0	
Oncology/RADO	0.4	3.0	0.3	
Infectious Diseases	0.1	0.0	2.0	
Nephrology	0.2	0.0	8.0	
Neurology	0.5	3.0	1.0	
Psychiatry	1.0	0.0	0.2	
Pulmonary	0.2	5.0	1.0	
Rheumatology	0.4	0.0	0.0	
Surgery Specialists:				
General Surgery / Colon / Oral	3.0	2.0	1.4	
Neurosurgery	0.0	0.0	0.0	
Ophthalmology	0.4	0.0	0.1	
Orthopedics	1.0	3.0	1.5	1.0
Otolaryngology (ENT)	1.0	2.0	3.1	
Plastic/Reconstructive	0.0	1.0	2.1	
Thoracic/Cardiovascular/Vasc	0.0	0.0	0.0	
Urology	0.2	1.0	0.1	
Hospital Based:				
Anesthesia/Pain	0.9	0.0	8.0	3.6
Emergency	5.2	8.0	0.0	1.0
Urgent Care	2.1	0.0	0.0	2.1
Radiology	1.0	6.0	0.0	
Pathology	1.0	1.0	1.0	
Hospitalist	3.0	0.0	4.0	
Neonatal/Perinatal	0.0	0.0	0.0	
Physical Medicine/Rehab	0.0	0.0	0.0	
Wound Care	0.5	0.0	0.0	
Podiatry	0.2	2.0	2.0	
TOTALS	37.2	57.0	46.5	18.4

* Total # of FTE Specialists serving community who office outside Cass County.

Visiting Specialists to Cass Regional Medical Center					
SPECIALTY	Physician Name or Group	Specialist Office Location (City)	At Hospital	At MOB	FTEs
Audiology	Angelda Wright	Harrisonville, Mo		Fridays	0.2
Cardiology	Midwest Cardiology	Harrisonville, Mo		2 days per week	0.4
Cardiology	KC Cardiology- Carrie Totta, MD	Harrisonville, Mo		5 days per week	1.0
Dermatology	Viseslav Tonkovic, MD	Harrisonville, Mo	2nd & 4th Friday morning		0.05
Dermatology	Marija Tonkovic, MD	Harrisonville, Mo	2nd and 4th Wednesday		0.1
Dermatology	Marija Tonkovic, MD	Harrisonville, Mo	Mondays		0.2
Dermatology	Viseslav Tonkovic, MD	Harrisonville, Mo	Tuesday afternoons		0.1
EMG	Michael Schwartzman, MD	Harrisonville, Mo	Fridays 2X per month		0.1
EMG	Robert Trout, MD	Harrisonville, Mo	Thursdays		0.2
Endocrinology	Madhavi Yarlagadda, MD	Harrisonville, Mo		2nd & 3rd Thursdays	0.1
Eye	Christopher Banning, MD	Harrisonville, Mo	1st & 3rd Wednesday		0.1
General Surgery	Jack Hudkins, MD, Michael Kohlman, MD & Walter Costner, MD	Harrisonville, Mo	Daily	Daily	3.0
Gynecology -	Scott Beard, MD	Harrisonville, Mo	Tuesday afternoons		0.10
Gynecology -	Bradley Sullivan, MD	Harrisonville, Mo		3rd Tuesday mornings	
Gynecology -	Megan Sneed, MD	Harrisonville, Mo		Wednesday	1.0
Infectious Disease	Paul Brune, MD, David McKinsey, MD & Jeol McKinsey, MD	Harrisonville, Mo		Wednesday afternoons	0.2
Infusion Clinic	Cass Regional Medical Center	Harrisonville, Mo	5 days per week		1.0
Nephrology	Robert Golder, MD & Subramanian Sivarajan, MD	Harrisonville, Mo		Mondays	0.2
Neurology -	Susan Crandell, DO	Harrisonville, Mo	Fridays- 2 X per month		0.05
Neurology -	Michael Schwartzman, MD	Harrisonville, Mo	Wednesdays		0.2
Neurology -	Iftexhar Ahmed, MD	Harrisonville, Mo		Wednesday afternoons	0.1
Oncology -	William Stephenson, MD	Harrisonville, Mo	Mondays & Thursdays		0.4
Otolaryngology	Mary Luce, MD	Harrisonville, Mo		Mon, Tue, Thurs, Fridays	0.8
Orthopedic -	Danny Carroll, MD, James Queenan, DO & Ken Petersen, DO	Harrisonville, Mo	Thursdays	Tuesdays, Wednesdays, Thursdays all day & Friday mornings	1.0
Pain Mgmt	James Johnson, DO	Harrisonville, Mo	Thursday afternoons		0.2
Pain Mgmt	Richard Morgan, MD	Harrisonville, Mo	Tuesday afternoons		0.2
Pain Mgmt	George Edwards, MD	Harrisonville, Mo	Wednesday afternoons		0.2
Podiatry	William Cruceam DPM	Harrisonville, Mo	Wednesdays		0.2
Pulmonary -	Kansas City Pulmonary Practice	Harrisonville, Mo	Wednesdays	Wednesdays	0.2
Rheumatology -	Kevin Latinis, MD	Harrisonville, Mo	Wednesdays & Thursdays		0.4
Urology -	Keith Ambercrombie, MD	Harrisonville, Mo	Tuesday mornings		0.1
Urology -	Steven Nash, MD	Harrisonville, Mo		Thursday mornings	0.1
Vein	Bangalore Deepak, MD	Harrisonville, Mo		1st Thursday afternoons	0.025
Weight Loss	Laura Voss, DO & James Lawrenzi, DO	Harrisonville, Mo		Tuesday mornings	0.1
Wound	Cass Regional Medical Center	Harrisonville, Mo	5 days a week		1.0
Wound	Michael Kohlman, MD	Harrisonville, Mo	Thursday afternoons		0.1
Wound	Shaun Holden, MD	Harrisonville, Mo	Tuesday mornings		0.1

Cass County MO Health Services Directory

Emergency Numbers

Police/Sheriff	911
Fire	911
Ambulance	911

Non-Emergency Numbers

	Police	Fire	Ambulance
Harrisonville	(816) 380-8320	(816) 380-8592	(816) 380-8925
Belton	(816) 331-4331	(816) 331-7969	(816) 331-7969
Raymore	(816) 331-0350	(816) 331-3008	(816) 331-3008
Pleasant Hill	(816) 540-9109	(816) 540-9108	(816) 540-9109
Peculiar	(816) 779-5102	(816) 779-5766	(816) 779-5766
Archie	(816) 430-5242	(816) 380-6744	(816) 380-6744
	Police	Fire	
Cleveland	(816) 618-3059	(816) 618-3998	
Freeman	(816) 250-2902	(816) 899-2550	
Garden City	(816) 773-8201	(816) 862-6366	
Drexel	(816) 380-5200	(816) 657-2662	
Creighton	(660) 499-2210	(660) 499-2313	
East Lynne	(816) 626-3521	(816) 869-3840	
Strasburg	(816) 866-3911	(816) 540-9108	

Cass Co. Sherriff (816) 380-5200

Hospitals

Belton Regional Medical Center
17065 U.S. 71
Belton, MO 64012
(816) 348-1200

Cass Regional Medical Center
2800 Rock Haven Rd.
Harrisonville, MO 64701
(816) 380-3474

Health Departments /Extension

Cass County Health Department
300 S Main St
Harrisonville, MO 64701
(816) 380-8425

University of MO Extension
201 West Wall
Harrisonville, MO 64701
(816) 380-8460

<http://extension.missouri.edu/cass>

Clinics

Allergy and Immunology

Aggarwal Jag M, MD
Aggarwal Allergy Clinic, Inc
17067 S 71 Highway Ste 200
Belton, MO 64012
(816) 525-8400

Anesthesia

Barrett Mark. CRNA
Cass Regional Medical Center
Anesthesia Department
2800 E. Rock Haven Road
Harrisonville, MO 64701
(816) 380-3474

Dunham Gerald. CRNA
Cass Regional Medical Center
Anesthesia Department
2800 E. Rock Haven Road
Harrisonville, MO 64701
(816) 380-3474

Schnorf-McCully Kristi. CRNA
Cass Regional Medical Center
Anesthesia Department
2800 E. Rock Haven Road
Harrisonville, MO 64701
(816) 380-3474

Audiology

Wright Angela, AuD
Cass Regional ENT Clinic
2820 E. Rock Haven Rd., Suite 210
Harrisonville, MO 64701
(816) 380-2446

Cardiology

Ashley Lillard G. Jr., MD
Kansas City Cardiology Associates
2820 E. Rock Haven Rd., Ste. 130
Harrisonville, MO 64701
(816) 525-1600

Blick David, MD
Kansas City Cardiology Associates
2820 E. Rock Haven Rd., Ste. 130
Harrisonville, MO 64701
(816) 525-1600

Brown Richard Paul, MD
Midwest Heart & Vascular Specialists,
LLC
17067 South Outer Road, Suite 200
Belton, MO 64012
(816) 276-4800

Chilappa Kiranmayi , MD
Midwest Heart & Vascular Specialists,
LLC
17065 South Outer Road
Belton, MO 64012
(816) 348-1200

Chilappa Kiranmayi , MD
Midwest Heart & Vascular Specialists,
LLC
2820 E. Rock Haven Rd., Ste. 200
Harrisonville, MO 64701
(816) 380-8080

Dang Elizabeth V, MD
Midwest Heart & Vascular Specialists,
LLC
17067 South Outer Road, Suite 200
Belton, MO 64012
(816) 276-4800

Dunker Daniel H., MD
Kansas City Cardiology Associates
2820 E. Rock Haven Rd., Ste. 130
Harrisonville, MO 64701
(816) 525-1600

Hill Shellie, FNP-C
Midwest Heart & Vascular Specialists,
LLC
2820 E. Rock Haven Rd., Ste. 200
Harrisonville, MO 64701
(816) 380-8080

Hockstad Eric S., MD
Kansas City Cardiology Associates
2820 E. Rock Haven Rd., Ste. 130
Harrisonville, MO 64701
(816) 525-1600

Mazzella Marco S., MD
Kansas City Cardiology Associates
2820 E. Rock Haven Rd., Ste. 130
Harrisonville, MO 64701
(816) 525-1600

Park Peter H, MD
Midwest Heart & Vascular Specialists,
LLC
17065 South Outer Road
Belton, MO 64012
(816) 348-1200

Patel Ujjaval M, MD
Midwest Heart & Vascular Specialists,
LLC
17065 South Outer Road
Belton, MO 64012
(816) 348-1200

Sear James E., MD
Kansas City Cardiology Associates
2820 E. Rock Haven Rd., Ste. 130
Harrisonville, MO 64701
(816) 525-1600

Sosland Rachel H, MD
Midwest Heart & Vascular Specialists
17067 South Outer Road, Suite 200
Belton, MO 64012
(816) 276-4800

Totta Carrie A., MD, FACC
Midwest Heart & Vascular Specialists,
LLC
17065 South Outer Road
Belton, MO 64012
(816) 348-1200

Totta Carrie A., MD, FCC
Midwest Heart & Vascular Specialists,
LLC
2820 E. Rock Haven Rd., Ste. 200
Harrisonville, MO 64701
(816) 380-8080

Dermatology

Tonkovic-Capin Marija, MD
Rock Haven Specialty Clinic
2820 E. Rock Haven Rd., Ste. 150
Harrisonville, MO 64701
(816) 887-0312

Tonkovic-Capin Visislav, MD
Rock Haven Specialty Clinic
2820 E. Rock Haven Rd., Ste. 150
Harrisonville, MO 64701
(816) 887-0312

Diagnostic Radiology

Farber Michael Eliot, MD
Midwest Radiology, Inc 17065 South
Hwy 71
Belton, MO 64012
(816) 348-1200

Emergency Medicine

Chamberlain Rebecca J., DO
Health Care Associated Emergency
Physicians
Cass Regional Medical Center
2800 E. Rock Haven Rd.
Harrisonville, MO 64701
(816) 887-0762

Charles Deidra L., MD
Lindsey Belt Emergency Physicians, LLC
17065 South 71 Hwy
Belton, MO 64012
(816) 348-1250

Cook Cecil Alan, DO
Lindsey Belt Emergency Physicians, LLC
17065 South 71 Hwy
Belton, MO 64012
(816) 348-1250

Cook Cecil Alan, DO
Health Care Associated Emergency
Physicians
Cass Regional Medical Center
2800 E. Rock Haven Rd.
Harrisonville, MO 64701
(816) 887-0762

Deshmukh Ameet, MD
Health Care Associated Emergency
Physicians
Cass Regional Medical Center
2800 E. Rock Haven Rd.
Harrisonville, MO 64701
(816) 887-0762

Dickerson David W., MD
Health Care Associated Emergency
Physicians
Cass Regional Medical Center
2800 E. Rock Haven Rd.
Harrisonville, MO 64701
(816) 887-0762

Galvin William Jr., DO
Health Care Associated Emergency
Physicians
Cass Regional Medical Center
2800 E. Rock Haven Rd.
Harrisonville, MO 64701
(816) 887-0762

Girken Jeffrey, MD
Health Care Associated Emergency
Physicians
Cass Regional Medical Center
2800 E. Rock Haven Rd.
Harrisonville, MO 64701
(816) 887-0762

Griego Natalie A., MD
Lindsey Belt Emergency Physicians, LLC
17065 South 71 Hwy
Belton, MO 64012
(816) 348-1250

Holcomb Mark, MD
Health Care Associated Emergency
Physicians
Cass Regional Medical Center
2800 E. Rock Haven Rd.
Harrisonville, MO 64701
(816) 887-0762

Johnston Robert M., MD
Health Care Associated Emergency
Physicians
Cass Regional Medical Center
2800 E. Rock Haven Rd.
Harrisonville, MO 64701
(816) 887-0762

Kousha Farahaz, MD
Lindsey Belt Emergency Physicians, LLC
17065 South 71 Hwy
Belton, MO 64012
(816) 348-1250

Lienhop Terry E., DO
Health Care Associated Emergency
Physicians
Cass Regional Medical Center
2800 E Rock Haven Rd.
Harrisonville, MO 64701
(816) 887-0762

Mayhue Franklin, MD
EMCare
18167 U.S. Highway 19 N., Ste. 650
Clearwater, FL 33764
(727) 507-3646

Stamper Erik, DO
Lindsey Belt Emergency Physicians, LLC
17065 South 71 Hwy
Belton, MO 64012
(816) 348-1250

Shustek Stefanie A, MD
Health Care Associated Emergency
Physicians
Cass Regional Medical Center
2800 E. Rock Haven Rd.
Harrisonville, MO 64701
(816) 887-0762

Pemberton Jay, DO
Health Care Associated Emergency
Physicians
Cass Regional Medical Center
2800 E. Rock Haven Rd.
Harrisonville, MO 64701
(816) 887-0762

Richards Dow, DO
Health Care Associated Emergency
Physicians
Cass Regional Medical Center
2800 E. Rock Haven Rd.
Harrisonville, MO 64701
(816) 887-0762

Scarborough Mark, MD
Health Care Associated Emergency
Physicians
Cass Regional Medical Center
2800 E. Rock Haven Rd.
Harrisonville, MO 64701
(816) 887-0762

VanBiber Jeffrey, DO
Health Care Associated Emergency
Physicians
Cass Regional Medical Center
2800 E. Rock Haven Rd.
Harrisonville, MO 64701
(816) 887-0762

Wilson Rebecca Jo, MD
Lindsey Belt Emergency Physicians, LLC
17065 South 71 Hwy
Belton, MO 64012
(816) 348-1250

White C. Catherine, DO
Health Care Associated Emergency
Physicians
Cass Regional Medical Center
2800 E. Rock Haven Rd.
Harrisonville, MO 64701
(816) 887-0762

Wyatt Billy Demetrius, MD
Lindsey Belt Emergency Physicians, LLC
17065 South 71 Hwy
Belton, MO 64012
(816) 348-1250

Endocrinology

Yarlagadda Madhavi, MD
Harrisonville Specialists-Medical Group
of Kansas City
2820 E. Rock Haven Rd., Ste. 205
Harrisonville, MO 64701
(816) 380-8080

Family Medicine

Anstine Kristi Smith, DNP, APRN, FNP-BC

Kingsville Medical Clinic
305 E. Pacific St
Kingsville, MO 64061
(816) 597-3500

Beatty Cassandra, MD
Peculiar Medical Clinic
300 S. Main St.
Peculiar, MO 64078
(816) 779-1100

Brewster Samuel, MD
Harrisonville Medical Clinic
2820 E. Rock Haven Rd., Ste. 210
Harrisonville, MO 64701
(816) 380-7470

Bogner Kent A, DO
Southland Primary Care
17067 S. 71 Hwy., Ste. 100
Belton, MO 64012
(816) 331-4000

Bradley Douglas L, MD
Southland Primary Care
17067 S. 71 Hwy., Ste. 100
Belton, MO 64012
(816) 331-4000

Burris Marsha, FNP-BC
Harrisonville Family Medicine
2820 E. Rock Haven Rd., Ste. 100
Harrisonville, MO 64701
(816) 380-3582

Davis Pamela, DO
Pleasant Hill Medical Clinic
1601 N. Highway 7
Pleasant Hill, MO 64080
(816) 540-2111

Durante Stephanie, MSN, ARNP, BC
Pleasant Hill Medical Clinic
1601 N. Highway 7
Pleasant Hill, MO 64080
(816) 540-2111

Fleming Kandice, MD
Harrisonville Family Medicine
2820 E. Rock Haven Rd., Ste 100
Harrisonville, MO 64701
(816) 380-3582

Goosey Karmen, RN, MSN, FNP-BC
Garden City Medical Clinic
101-B Old 7 Highway
Garden City, MO 64747
(816) 773-6203

Holden Shaun B., MD
Harrisonville Family Medicine
2820 E. Rock Haven Rd., Ste. 100
Harrisonville, MO 64701
(816) 380-3582

Holder Stephanie, RN, NP-C
Harrisonville Medical Clinic
2820 E. Rock Haven Rd., Ste. 210
Harrisonville, MO 64701
(816) 380-7470

Kratt Logan Frederick, MD
Southland Primary Care
17067 S. 71 Hwy., Ste. 100
Belton, MO 64012
(816) 331-4000

Lawrenzi James, DO
Archie Medical Clinic
709 E. Pine
Archie, MO 64725
(816) 430-5777

Lawrenzi James, DO
Garden City Medical Clinic
101-B Old 7 Highway
Garden City, MO 64747
(816) 773-6203

Maxwell Christopher D., MD
Kingsville Medical Clinic
305 E. Pacific St
Kingsville, MO 64061
(816) 597-3500

Mohan Purnima S., MD
Southland Primary Care
17067 S. 71 Hwy., Ste. 100
Belton, MO 64012
(816) 331-4000

Moore Christine, DO
Christine L. Moore, DO
402 Pine Street, Ste. K
Raymore, MO 64083
(816) 322-0701

Moore Deana, FBP-BC
Harrisonville Family Medicine
2820 E. Rock Haven Rd., Ste. 100
Harrisonville, MO 64701
(816) 380-3582

Orear Angelena, ARNP, NP-C
Drexel Medical Clinic
201 East Main Street
Drexel, MO 64742
(816) 619-3000

Ostrander Craig, DO
Harrisonville Medical Clinic
2820 E. Rock Haven Rd., Ste. 210
Harrisonville, MO 64701
(816) 380-7470

Price Richard C., MD
Harrisonville Medical Clinic
2820 E. Rock Haven Rd., Ste. 210
Harrisonville, MO 64701
(816) 380-7470

Ridley Kirk D., MD
Southland Primary Care
17067 S. 71 Hwy. Ste. 100
Belton, MO 64012
(816) 331-4000

Schlagle Jackie, RN, FNP-BC
Archie Medical Clinic
709 E. Pine
Archie, MO 64725
(816) 430-5777

Scott Jeffrey A., MD
Jeffrey A. Scott MD Medical Group
13010 White Ave., Ste. A
Grandview, MO 64118
(816) 452-1211

Suarez Alberto, MD
Westchester Family Care PC
809 Westchester Ave
Harrisonville, MO 64701
(816) 380-3898

Suarez, Alberto, MD
Drexel Medical Clinic
201 East Main Street
Drexel, MO 64742
(816) 619-3000

Thurston Jeana, MSN, RN, FNP-C, CNN
Peculiar Medical Clinic
300 S. Main St.
Peculiar, MO 64078
(816) 779-1100

Travis, Damon K., DO
Harrisonville Family Medicine
2820 E. Rock Haven Rd., Ste. 100
Harrisonville, MO 64701
(816) 380-3582

Williams David R., MD
Southland Primary Care
17067 S 71 HWY STE 100
Belton, MO 64012
(816) 331-4000

Utterback Jennifer, NP_C
Harrisonville Family Medicine
2820 E. Rock Haven Rd., Ste. 100
Harrisonville, MO 64701
(816) 380-3582

Voss Laura, DO
Pleasant Hill Medical Clinic
1601 N. Highway 7
Pleasant Hill, MO 64080
(816) 540-2111

Wheeler Robert L., MD
Harrisonville Medical Clinic
2820 E. Rock Haven Rd., Ste. 210
Harrisonville, MO 64701
(816) 380-7470

Williams David R., MD
Southland Primary Care
17067 S. 71 Hwy., Ste 100
Belton MO 64012
(816) 331-4000

Wilson, Amanda, NP-C
Harrisonville Family Medicine
2820 E. Rock Haven Rd., Ste. 100
Harrisonville, MO 64701
(816) 380-3582

Gastroenterology

Conner Michael J., MD
Fedotin & Ginsberg, MD, Inc.
6420 Prospect, Ste.T-407
Kansas City, MO 64132
(816) 333-5424

Elias Ivan J., MD
Fedotin & Ginsberg, MD, Inc.
6420 Prospect, Ste.T-407
Kansas City, MO 64132
(816) 333-5424

Fedotin Michael S., MD
Fedotin & Ginsberg, MD, Inc.
6420 Prospect, Ste.T-407
Kansas City, MO 64132
(816) 333-5424

Ginsberg Brent W., MD
Fedotin & Ginsberg, MD, Inc.
6420 Prospect, Ste.T-407
Kansas City, MO 64132
(816) 333-5424

Merritt Gregory A., MD
Fedotin & Ginsberg, MD, Inc.
6420 Prospect, Ste.T-407
Kansas City, MO 64132
(816) 333-5424

General Surgery

Costner Walter, MD
Harrisonville Medical Clinic
2820 E. Rock Haven Rd., Ste. 210
Harrisonville, MO 64701
(816)380-2446

Hudkins Jack, MD
Harrisonville Medical Clinic
2820 E. Rock Haven Rd., Ste. 210
Harrisonville, MO 64701
(816)380-2446

Kirk Spencer P., DO
Midwest Medicine Associates, LLC
17067 South Outer Road, Suite 100
Belton, MO 64012
(816) 348-4266

Kohlman Michael, MD
Harrisonville Medical Clinic
2820 E. Rock Haven Rd., Ste. 210
Harrisonville, MO 64701
(816)380-2446

Troiani Robert Thomas, MD
Midwest Medicine Associates, LLC
17067 S. Outer Rd., Ste 200
Belton, MO 64012
(816) 348-4270

Hematology/Oncology

Evans Rhonda, FNP
Midwest Oncology Associates, LLC
17065 South Outer Road
Belton, MO 64012
(816) 348-1654

Slovick Frank T, MD
Midwest Oncology Associates, LLC
17065 South Outer Road
Belton, MO 64012
(816) 348-1654

Stephenson William T., MD
Midwest Oncology Associates, LLC
Cass Regional Medical Center Specialists
Clinic
2800 E. Rock Haven Rd.
Harrisonville, MO 64701
(816) 887-0331

Stephenson William T., MD
Midwest Oncology Associates, LLC
17065 South Outer Road
Belton, MO 64012
(816) 348-1654

Infectious Disease

Bajracharya Himil B., MD
Infectious Disease Associates of Kansas
City, PC
6400 Prospect, Ste. 392
Kansas City, MO 64132
(816) 822-8486

Brune Paul R, MD
Infectious Disease Associates of Kansas
City, PC
2820 E. Rock Haven Rd., Ste. 205
Harrisonville, MO 64701
(816) 522-8486

Driks Michael R., MD
Infectious Disease Associates of Kansas
City, PC
6400 Prospect, Ste. 392
Kansas City, MO 64132
(816) 822-8486

McKinsey David S, MD
Infectious Disease Associates of Kansas
City, PC
2820 E. Rock Haven Rd., Ste. 205
Harrisonville, MO 64701
(816) 522-8486

McKinsey Joel P, MD
Infectious Disease Associates of Kansas
City, PC
2820 E. Rock Haven Rd., Ste. 205
Harrisonville, MO 64701
(816) 522-8486

Internal Medicine

Barnett Daniel K, MD
Grandview Health Care Clinic, LLC
1003 S Cedar St
Belton, MO 64012
(816) 331-0781

Cuezze Joy E., MD
Kansas City Medical Partners
106 W. 11th Street, Ste. 1215
Kansas City, MO 64105
(816) 822-0050

Carpenter Jennifer Christine, MD
Southland Primary Care
17067 S. 71 Hwy. Ste. 100
Belton, MO 64012
(816) 331-4000

Farrell Kevin E., MD
Kansas City Medical Partners
106 W. 11th Street, Ste. 1215
Kansas City, MO 64105
(816) 822-0050

Travis Aaron, DO
Harrisonville Family Medicine
2820 E. Rock Haven Rd., Ste. 100
Harrisonville, MO 64701
(816) 380-3582

Interventional Cardiology

Deepak Bangalore V, MD
Midwest Heart & Vascular Specialists,
LLC
17065 South Outer Road
Belton, MO 64012
(816) 348-1200

Deepak Bangalore V, MD
Midwest Heart & Vascular Specialists,
LLC
2820 E. Rock Haven Rd, Ste. 200
Harrisonville, MO 64701
(816) 380-3474

Nephrology

Al-Absi Ahmed I., MD
Kidney Associates of Kansas City, PA
6530 Troost Ave., Ste. A
Kansas City, MO 64131
(816) 361-0670

Alford Kelly R., MD
Kidney Associates of Kansas City, PA
6530 Troost Ave., Ste. A
Kansas City, MO 64131
(816) 361-0670

Bender Walter L., MD
Kidney Associates of Kansas City, PA
6530 Troost Ave., Ste. A
Kansas City, MO 64131
(816) 361-0670

Dalal Pranavkum K., MD
Kidney Associates of Kansas City, PA
6530 Troost Ave., Ste. A
Kansas City, MO 64131
(816) 361-0670

Golder Robert E., MD
Midwest Nephrology Consultants
2820 E. Rock Haven Rd., Ste. 205
Harrisonville, MO 64701
(816) 380-8080

Muther Richard S., MD
Kidney Associates of Kansas City, PA
6530 Troost Ave., Ste. A
Kansas City, MO 64131
(816) 361-0670

Neufeld Timothy K., MD
Kidney Associates of Kansas City, PA
6530 Troost Ave., Ste. A
Kansas City, MO 64131
(816) 361-0670

Peterson William J., MD
Kidney Associates of Kansas City, PA
6530 Troost Ave., Ste. A
Kansas City, MO 64131
(816) 361-0670

Reid Gerald M., MD
Kidney Associates of Kansas City, PA
6530 Troost Ave., Ste. A
Kansas City, MO 64131
(816) 361-0670

Sivarajan Subramanian, MD
Midwest Nephrology Consultants
2820 E. Rock Haven Rd., Ste. 205
Harrisonville, MO 64701
(816) 380-8080

Neurology

Ahmed Iftekhar, MD
Research Neurology Associates, LLC
2820 E. Rock Haven Rd., Ste. 205
Harrisonville, MO 64701
(816) 756-2651

Crandall Suzanne, DO
St. Luke's Neurology Consultants
Rock Haven Specialty Clinic
2820 E. Rock Haven Rd., Ste. 150
Harrisonville, Mo. 64701
(816) 9887-0312

Kosa Steven C., MD
Research Neurology Associates, LLC
17067 South Outer Road
Belton, MO 64012
(816) 756-2641

Kosa Steven C., MD
Research Neurology Associates, LLC
2820 E. Rock Haven Rd., Ste. 205
Harrisonville, MO 64701
(816) 756-2651

Parreira Jennifer Ann, NP
Research Neurology Associates, LLC
17067 South Outer Road
Belton, MO 64012
(816) 756-2641

Sand John J., MD
MD Electordiagnosis, Inc. PC
6420 Prospect Ave., Ste. T-503
Kansas City, MO 64132
(816) 361-8684

Schwartzman Michael J., DO
St. Luke's Neurology Consultants
Rock Haven Specialty Clinic
2820 E. Rock Haven Rd., Ste. 150
Harrisonville, Mo. 64701
(816) 887-0312

Obstetrics and Gynecology

Beard Scott, MD
Rock Haven Specialty Clinic
2820 E. Rock Haven Rd., Ste. 150
Harrisonville, MO 64701
(816) 887-0312

Bledsoe Amber R, MD
Midwest Women's Healthcare
Specialists, LLC
17065 South Outer Road
Belton, MO 64012
(816) 348-1200

Cowan Mary A., APN
Midwest Women's Healthcare
Specialists, LLC
17053 South Hwy 71, Ste. 204
Belton, MO 64012
(816) 331-6920

Johnson Rebecca S, MD
Midwest Women's Healthcare
17067 South Outer Road, Suite 200
Belton, MO 64012
(816) 348-4266

Sneed Megan L., MD
Women's Care at Lee's Summit
2820 E. Rock Haven Rd., Ste. 200D
Harrisonville, MO 64701
(816) 380-8080

Sullivan Bradley H, MD
Midwest Women's Healthcare
Specialists, LLC
17067 S 71 Hwy Ste. 200
Belton, MO 64012
(816) 348-4270

Sullivan Bradley H, MD
Midwest Women's Healthcare
Specialists, LLC
2820 E. Rock Haven Rd., Ste. 205
Harrisonville MO 64701
(816) 380-8081

West, Patti, RN, CNW
Women's Care at Lee's Summit
2820 E. Rock Haven Rd., Ste. 200D
Harrisonville, MO 64701
(816) 380-8080

Ophthalmology

Banning, Christopher S., MD
Rock Haven Specialty Clinic
2820 E. Rock Haven Rd., Suite 150
Harrisonville, MO 64701
(816) 887-0312

Bauman Alan E., MD
Cass County Eye Center
424 E. North Ave.
Belton, MO 64012

Oral and Maxillofacial Surgery

Sims Shera A., DDS
A World of Smiles
304 Locust Street
Harrisonville, MO 64701
(816) 380-2222

Smith David M., DDS, MD
Raymore Oral and Maxillofacial Surgery
909 W. Foxwood Dr., Ste. 237
Raymore MO 64083
(816) 348-7527

Stone Randell E., DDS
200 S.E. Douglas, Ste. 100
Lee's Summit, MO 64063
(816) 524-2492

Orthopedic Surgery

Carroll Danny K, MD
Bone & Joint Specialists Physician
Group, LLC
17067 S. Outer Rd., Ste. 200
Belton, MO 64012
(816) 322-0688

Carroll Danny K, MD Bone & Joint
Specialists Physician Group, LLC
2820 E Rock Haven Rd., STE 120
Harrisonville, MO 64701
(816) 380-2530

Gillen John A. III, MD
John A. Gillen II MD Orthopaedic
Specialists, PA
900 Main Street
Grandview, MO 64039
(816) 331-6700

Petersen Kenneth W., DO
Bone & Joint Specialists Physician
Group, LLC
17067 S. Outer Rd., Ste. 200
Belton, MO 64012
(816) 322-0688

Petersen Kenneth W., DO
Bone & Joint Specialists Physician
Group, LLC
2820 E. Rock Haven Rd., Suite 120
Harrisonville, MO 64701
(816) 348-4266

Queenan James F., DO
Bone & Joint Specialists Physician
Group, LLC
17067 S. Outer Rd., Ste. 200
Belton, MO 64012
(816) 322-0688

Queenan James F., DO
Bone & Joint Specialists Physician
Group, LLC
2820 E. Rock Haven Rd., Ste. 120
Harrisonville, MO 64701
(816) 380-2530

Queenan James F., DO
Rock Haven Specialists Clinic
2820 E. Rock Haven Rd, Suite 150
Harrisonville, MO. 64701
(816) 887-0312

Winkley Kimberly A RN, NP
Bone & Joint Specialists Physicians
Group, LLC
17067 S. Outer Rd., Ste. 200
Belton, MO 64012
(816) 322-0688

Winkley Kimberly A RN, NP
Bone & Joint Specialists Physician
Group, LLC
2820 E. Rock Haven Suite 120
Harrisonville, MO 64701
(816) 348-4266

Otolaryngology

Cowan Douglas H., MD
ENT Associates of Greater Kansas City,
PC
4880 NE Goodview Circle
Lee's Summit, MO 64064
(816) 478-4200

Luce Mary, MD
Cass Regional Medical Center ENT Clinic
Harrisonville Medical Clinic
2820 Rock Haven Rd., Ste. 210
Harrisonville, MO 64701
(816) 380-2446

Sleve Daniel A., MD
ENT Associates of Greater Kansas City,
PC
4880 NE Goodview Circle
Lee's Summit, MO 64064
(816) 478-4200

Walls Kelvin L, MD
ENT Associates of Greater Kansas City,
PC
17067 South 71 Hwy, Ste 200
Belton, MO 64012
(816) 478-4200

Walton Mark S, MD
Head & Neck Surgery of Kansas City, PA
17053 South Hwy 71, Ste 206
Belton, MO 64012
(816) 322-4098

Pain Management

Edwards George, MD
Pain Management Associates
Cass Regional Medical Center
2800 E. Rock Haven Rd.
Harrisonville, MO 64701
(816) 380-5888 ext. 4570

Johnson James E., DO
SJ Pain Associates, Inc.
Cass Regional Medical Center
2800 E. Rock Haven Rd.
Harrisonville, MO 64701
(816) 380-5888 ext. 4570

Morgan Richard L., MD
SJ Pain Associates, Inc.
Cass Regional Medical Center
2800 E. Rock Haven Rd.
Harrisonville, MO 64701
(816) 380-5888 ext. 4570

Pathology

Lisle Allison E, MD
Midwest Pathology Associates, LLC
17065 South Outer Road
Belton, MO 64012
(816) 348-1200

Shideler Barbara, MD
Physicians Reference Lab
Cass Regional Medical Center
2800 E. Rock Haven Rd.
Harrisonville, Mo. 64701
(816) 887-0751

Plastic Surgery

Zadoo Vikram P., MD
Midwest Trauma Services, LLC
17065 South Outer Road
Belton, MO 64012
(816) 276-7410

Podiatry

Bondi Laurel A., DPM
Robert A & Laurel Bondi, DPMs
115 Bradford Lane
Belton, MO 64012
(816) 322-3177

Bondi Robert A., DPM
Robert A & Laurel Bondi, DPMs
115 Bradford Lane
Belton, MO 64012
(816) 322-3177

Cruce William, DPM
Rock Haven Specialty Clinic
2820 E. Rock Haven Rd., Suite 150
Harrisonville, MO 64701
(816) 887-0312

Engel Shannon A., DPM
Ankle & Foot Centers of MO
407 NE 76th Terrace
Gladstone, MO 64118
(816) 436-7900

Hewitt Thomas C., DPM
Family Foot Docs
6717 N. Oak Trafficway
Gladstone, MO 64118
(816) 452-1211

Theoharidis Akilis M., DPN
Ankle & Foot Centers of MO
407 NE 76th Terrace
Gladstone, MO 64118
(816) 436-7900

Psychiatry

Hachinsky Wade, DO
Psychiatric Associates of Kansas City
Sage Behavior Health Unit
2800 E. Rock Haven Rd.
Harrisonville, MO 64071
(816) 887-0793

Mays Kevin, MD
Psychiatric Associates of Kansas City
Sage Behavior Health Unit
2800 E. Rock Haven Rd.
Harrisonville, MO 64071
(816) 887-0793

Pulmonology

Beary William M, MD
Kansas City Pulmonology Practice, LLC
17067 South Outer Road, Ste. 200
Belton, MO 64012
(816) 348-4266

Beary William M, MD
Kansas City Pulmonology Practice, LLC
2820 E. Rock Haven Rd., Ste. 200
Harrisonville, MO 64701
(816) 380-8080

Beller Thomas A., MD
Kansas City Pulmonology Practice, LLC
17067 South Outer Road, Ste. 200
Belton, MO 64012
(816) 348-4266

Beller Thomas A., MD
Kansas City Pulmonology Practice, LLC
2820 E. Rock Haven Rd., Ste. 200
Harrisonville, MO 64701
(816) 380-8080

Brook Charles J., MD
Kansas City Pulmonology Practice, LLC
17065 South Outer Road
Belton, MO 64012
(816) 333-1919

Brook Charles J, MD
Kansas City Pulmonology Practice, LLC
2820 E. Rock Haven Rd., Ste. 200
Harrisonville, MO 64701
(816) 380-8080

Chacey Michael David, MD
Kansas City Pulmonology Practice, LLC
17067 South Outer Road, Suite 200
Belton, MO 64012
(816) 348-4266

Chacey Michael David, MD
Kansas City Pulmonology Practice, LLC
2820 E. Rock Haven Rd., Ste. 200
Harrisonville, MO 64701
(816) 380-8080

Gaur Neeta, MD
Kansas City Pulmonology Practice, LLC
17065 South Outer Road
Belton, MO 64012
(816) 333-1919

Gaur Neeta, MD
Kansas City Pulmonology Practice, LLC
2820 E. Rock Haven Rd., Ste. 200
Harrisonville, MO 64701
(816) 380-8080

Montee Tannaz, MD, ABSM
Kansas City Pulmonology Practice, LLC
17065 South Outer Road
Belton, MO 64012
(816) 333-1919

Montee Tannaz, MD, ABSM
Kansas City Pulmonology Practice, LLC
2820 E. Rock Haven Rd., Ste. 200
Harrisonville, MO 64701
(816) 380-8080

Waxman Michael J, MD
Kansas City Pulmonology Practice, LLC
2820 E. Rock Haven Rd., Ste. 200
Harrisonville, MO 64701
(816) 380-8080

Radiology

Bhargava Neil, MD
Midwest Radiology, Inc
17065 South Hwy 71
Belton, MO 64012
(816) 348-1200

DePaolis Dion C., MD
Midwest Radiology, Inc
17065 South Hwy 71
Belton, MO 64012
(816) 348-1200

Farber Michael E., MD
Midwest Radiology, Inc
17065 South Hwy 71
Belton, MO 64012
(816) 348-1200

Halder Vandana, MD
United Imaging Consultants
Cass Regional Medical Center
2800 E. Rock Haven Rd.
Harrisonville, MO 64701
(816) 887-0735

Hazuka David, MD
United Imaging Consultants
Cass Regional Medical Center
2800 E. Rock Haven Rd.

Harrisonville, MO 64701
(816) 887-0735

Lee Graham K, MD
Midwest Radiology, Inc
17065 South Hwy 71
Belton, MO 64012
(816) 348-1200

Litwin Kevin Lee, MD
Midwest Radiology, Inc
17065 South Hwy 71
Belton, MO 64012
(816) 348-1200

Sweeney Thomas Patrick, MD
Midwest Radiology, Inc
17065 South Hwy 71
Belton, MO 64012
(816) 348-1200

Rheumatology

Latinis Kevin, MD, PhD
Cass Regional Medical Center Specialists
Clinic
2800 E. Rock Haven Rd.
Harrisonville, MO 64701
(816) 887-0331

Urology

Ambercrombie Keith, MD
Rock Haven Specialty Clinic
2820 E. Rock Haven Rd., Ste. 150
Harrisonville, MO 64701
(816) 887-0312

Nash Steven D., MD
Kansas City Urology Care, PA
17053 South Hwy 71, Ste. 204
Belton, MO 64012
(816) 331-6920

Nash Steven D., MD
Kansas City Urology Care, PA
2820 E. Rock Haven Rd., Ste. 205
Harrisonville, MO 64701
(816) 331-6920

Vascular Neurology

Kohake Shannon E, MD
Research Neurology Associates, LLC
17065 South Outer Road
Belton, MO 64012
(816) 756-2641

Kohake Shannon E, MD Research
Neurology Associates, LLC
2820 E. Rock Haven Rd., Ste. 205
Harrisonville, MO 64701
(816) 380-8080

Vein Specialist

Deepak Bangalore V., MD
Midwest Heart and Vascular
2820 E. Rock Haven Rd., Ste. 200
Harrisonville, MO 64701
(816) 380-8088

Weight Loss & Bariatric Medicine

Lawrenzi James, DO
Cass Regional Weight Loss & Bariatric
Surgery Clinic
2820 E. Rock Haven Rd., Ste. 210
Harrisonville, MO 64701
(816) 380-2446

Voss Laura, DO
Cass Regional Weight Loss & Bariatric
Surgery Clinic
2820 E Rock Haven Rd., Ste. 210
Harrisonville, MO 64701
(816) 380-2446

Wellness Medicine

Burris Marsha, FNP-BC
HFM Zone
2820 E. Rock Haven Rd., Ste. 100
Harrisonville, MO 64701
(816) 380-3582

Holden Shaun B., MD
HFM Zone
2820 E. Rock Haven Rd., Ste. 100
Harrisonville, MO 64701
(816) 380-3582

Wound Care

Costner Walter, MD
The Wound Center at Rock Haven
Specialty Clinic
2820 E. Rock Haven Rd., Ste. 150
Harrisonville, MO 64701
(816) 887-0303

Deshmukh Ameet, MD
The Wound Center at Rock Haven
Specialty Clinic
2820 E. Rock Haven Rd., Ste. 150
Harrisonville, MO 64701
(816) 887-0303

Holcomb Mark, MD
The Wound Center at Rock Haven
Specialty Clinic
2820 E. Rock Haven Rd., Ste. 150
Harrisonville, MO 64701
(816) 887-0303

Holden Shaun B., MD
The Wound Center at Rock Haven
Specialty Clinic
2820 E. Rock Haven Rd., Ste. 150
Harrisonville, MO 64701
(816) 887-0303

Johnston Robert MD
The Wound Center at Rock Haven
Specialty Clinic
2820 E. Rock Haven Rd., Ste. 150
Harrisonville, MO 64701
(816) 887-0303

Kohlman Michael, MD
The Wound Center at Rock Haven
Specialty Clinic
2820 E. Rock Haven Rd., Ste. 150
Harrisonville, MO 64701
(816) 887-0303

Ostrander Craig, DO
The Wound Center at Rock Haven
Specialty Clinic
2820 E. Rock Haven Rd., Ste. 150
Harrisonville, MO 64701
(816) 887-0303

Children and Youth

Boys and Girls Town National Hotline
1-800-448-3000
www.girlsandboystown.org

Child/Adult Abuse and Neglect Hotline
800-922-5330

Child Abuse National Hotline
800-422-4453
800-222-4453 (TDD)
www.childhelp.org

Child Abuse National Hotline
1-800-4-A-CHILD (422-4453)
www.childabuse.com

Child Find of America
1-800-426-5678

Child Help USA National Child Abuse
Hotline
1-800-422-4453

National Runaway Switchboard
1-800-RUNAWAY
www.1800runaway.org/

National Society for Missing and
Exploited Children
1-800-THE-LOST (843-5678)
www.missingkids.com

Parents Anonymous Help Line
800-345-5044
<http://www.parentsanonymous.org/paIndex10.html>

Runaway Line
800-621-4000 / 800-621-0394 (TDD)
<http://www.1800runaway.org/>

Chiropractors

Cass County Chiro Center
903 N Commercial St,
Harrisonville MO
(816) 380-3555

Absolute Health
2017 Plaza Dr
Harrisonville, MO
(816) 380-2436

Schroeder Chiropractic PC
207 E Wall St # 7,
Harrisonville, MO
(816) 380-6699

Mc Candless Chiropractic
8446 Clint Dr,
Belton, MO
(816) 322-4377

Family Chiropractic
3001 N State Route 291 4,
Harrisonville, MO
(816) 380-5180

Eye Doctors

Advanced Eyecare
905 W Foxwood Dr
Raymore, MO 64083-7200 Map
(816) 322-1872

Bauman Alan
424 E North Ave
Belton, MO 64012-2017 Map
(816) 322-6100

Blair Robert OD
1700 281 Hwy
Harrisonville, MO 64701-6470 Map
(816) 884-5845

Cass County Eye Care Center
424 E North Ave
Belton, MO 64012-2017 Map
(816) 322 -6100

Ciccio Amy E M.d.
424 E North Ave
Belton, MO 64012-2017 Map
(816) 322-6100

Cline Ginger E
424 E North Ave
Belton, MO 64012-2017 Map
(816) 322-6100

Dehning Doug O
2033 N Commercial St
Harrisonville, MO 64701-1282 Map
(816) 478-1230

Discover Vision Centers
2033 N Commercial St
Harrisonville, MO 64701-1282 Map
(816) 478-1230

Dyer Vision Center
101 Apple Valley Pkwy
Belton, MO 64012-4725 Map
(816) 331-9590

DYERVISIONCENTERINC
101 Apple Valley Pkwy
Belton, MO 64012-4725 Map
(816) 331-9585

Eye Center
1800 E Mechanic St
Harrisonville, MO 64701-2017 Map
(816) 884-3291

Huff Bryan OD
887 E Walnut St
Raymore, MO 64083-8100 Map
(816) 318-3937

Insight Eye Care Specialists
1525 N State Route 7
Pleasant Hill, MO 64080-1972 Map
(816) 987-2203

Insight Eyecare Specialties- Harrisonville
2100 E Mechanic St
Harrisonville, MO 64701-2057 Map
(816) 884-5212

Raymore Eyecare
887 E Walnut St
Raymore, MO 64083-8100 Map
(816) 318-3937
Share

Snider & Associates Optometry
2100 E Mechanic St
Harrisonville, MO 64701-2057 Map
(816) 884-5212

Snider & Associates Optometry
1525 N State Route 7 Ste 102
Pleasant Hill, MO 64080-1979 Map
(816) 987-2203

Snider Larry D OD Office
2100 E Mechanic St
Harrisonville, MO 64701-2057 Map
(816) 884-5212

Dentists

Mary Kay Mitchell DDS Family Dentistry
109 S Madison St
Raymore, MO
(816) 322-8080
mkmds.com

Viloria Richard P DDS PC
425 W Pine St
Raymore, MO
(816) 331-8450
viloriaartofdentistry.com

Harmony Smiles Orthodontics
613 Conway St #103
Raymore, MO
(816) 322-2525
harmonysmiles.com

Silver Lake Dentistry
Whitford, Joshua E DDS
901 W Foxwood Dr
Raymore, MO
(816) 322-2292
silverlakedentistry.com

Cass County Smiles
209 S Washington St
Raymore, MO
(816) 331-3456

Dr. David M. Smith, MD
909 W Foxwood Dr
Raymore, MO
(816) 348-7527
raymoreoms.com

Burleson Orthodontics & Pediatric
Dentistry
401 Laurus Dr
Raymore, MO
(816) 318-8820
raypecsmiles.com

Cass County Smiles
Broyles Irene DDS
209 S Washington St
Raymore, MO
(888) 750-5844

Foxwood Springs Living Center
Seabaugh Ruth Anne DDS
1500 W Foxwood Dr
Raymore, MO
(913) 649-1351

Mann Paul R
1286 W Foxwood Dr
Raymore, MO
(816) 322-7668

Dr. Jacob D. Young, DDS
8015 E 171st St
Belton, MO
(816) 331-4800
beltondentist.com

Dunning Steven D DDS
561 N Scott Ave
Belton, MO
(816) 331-4333
stevendunningdds.com

Bradford Place Family Dentist
119 Bradford Ln,
Belton, MO
(816) 331-9802
markandersondds.com

Dr. Terry L. Myers, DDS
109 Apple Valley Pkwy
Belton, MO
(816) 331-4200
keystone-dentistry.com

Dentures & Dental Services® of Belton
17049 Bel Ray Blvd
Belton, MO
(816) 322-6551
belton.dentalservice.net

Smiles Unlimited LLC
McNamara, Kevin DDS
103 Congress
Belton, MO
(816) 331-9100
beltonsmiles.com

Evans Carla J DDS
8435 Clint Dr
Belton, MO
(816) 331-5900
drcarlaevans.com

Graig Grider PC
8432 Clint Dr
Belton, MO
(816) 246-9995
griderorthodontics.com

Braces By Billings
Billings Steven P DDS
410 E North Ave
Belton, MO
(816) 331-1902
bracesbybillings.com

Terry L Myers PC:
Perme Paul R DDS
109 Apple Valley Pkwy
Belton, MO
(816) 331-4200
keystone-dentistry.com

Disability Services

American Disability Group
877-790-8899

American Association of People with
Disabilities (AAPD)
www.aapd.com

American Council for the Blind
1-800-424-8666
www.acb.org

Americans with Disabilities Act
Information Hotline
1-800-514-0301
1-800-514-0383 (TTY)
www.ada.gov

National Center for Learning Disabilities
1-888-575-7373
www.nclld.org

National Library Services for Blind &
Physically Handicapped
www.loc.gov/nls/
1-800-424-8567

Environment

Environmental Protection Agency
1-800-223-0425
913-321-9516 (TTY)
www.epa.gov

Fitness Centers

Belton Parks Community Center
609 Minnie Ave
Belton, MO 64012
(816) 322-7976

Harrisonville Community Center
2400 S Jefferson Pkwy, Harrisonville,
MO 64701
(816) 380-8980

Food and Drug

Center for Food Safety and Applied
Nutrition
1-888-SAFEFOOD (723-3366)
www.cfsan.fda.gov/
www.healthfinder.gov/

US Consumer Product Safety
Commission
800-638-2772
800-638-8270 (TDD)
www.cpsc.gov

USDA Meat and Poultry Hotline
1-888-674-6854
1-800-256-7072 (TTY)
www.fsis.usda.gov/

U.S. Food and Drug Administration
1-888-INFO-FDA
1-888-463-6332
www.fsis.usda.gov/

Home Health

Quality Home Care
1903 Gaslight Dr
Harrisonville, MO 64701
(816) 380-3222

Visiting Nurses Association
1604 E Elm St
Harrisonville, MO 64701
(816) 380-3654

Hospice

Serenity Care Hospice
2000 E Mechanic St
Harrisonville, MO 64701
(816) 380-3913

Legal Services

Missouri Attorney General's Office
Supreme Court Building
207 W. High St.
P.O. Box 899
Jefferson City, MO 65102
573-751-3321
Fax: 573-751-0774

Medicaid

U.S. Department of Health and Human
Services
Centers for Medicare and Medicaid
Services
800-MEDICARE (800-633-4227) or
877-486-2048 (TTY)
www.cms.hhs.gov

Medicare

Social Security Administration
1612 Imperial Drive
West Plains, MO 65775
1-866-614-2741
1-800-772-1213
TTY: 1-800-325-0778
Office Hours: Monday - Friday:
09:00 Am - 03:30 Pm

Mental Health Services

Missouri Department of Mental Health
573-751-4122
1-800-364-9687
Fax: 573-751-8224

Mental Health America
1-800-969-6MHA (969-6642)

National Alliance for the Mentally Ill
Helpline
1-800-950-6264
703-516-7227 (TTY)
www.nami.org

National Institute of Mental Health
1-866-615-6464
1-866-415-8051 (TTY)
www.nimh.nih.gov

Suicide Prevention Hotline
1-800-SUICIDE [784-2433]
www.hopeline.com

National and State Agencies

Missouri Child Abuse Hotline
Toll-Free: (800) 392-3738
Local: (573) 751-3448

Missouri Coalition Against Domestic and
Sexual Violence
217 Oscar Dr., Suite A
Jefferson City, MO 65101
573-634-4161

National Domestic Violence Hotline
800-799-7233
www.ndvh.org
www.thehotline.org

National Sexual Assault Hotline
800-656-4673

Federal Bureau of Investigation
St. Louis Office
2222 Market Street, St. Louis, MO
(314) 231-4324

Federal Bureau of Investigation
866-483-5137

Missouri Road Conditions
MoDOT
Central Office
105 W. Capitol Avenue
Jefferson City, MO 65102
1-888 ASK MODOT
(1-888 275 6636)

Poison Control Center
800-222-1222
www.aapcc.org

Suicide Prevention Hotline
800-SUICIDE
800-442-HOPE
<http://hopeline.com>
800-273-TALK
www.suicidepreventionlifeline.com

Toxic Chemical and Oil Spills
800-424-8802

Alcohol and Drug Treatment Programs

A 1 A Detox Treatment
1-800-757-0771

Recovery Connection
1-800-993-3869

Able Detox-Rehab Treatment
1-800-577-2481 (NATIONAL)

Abuse Addiction Agency
1-800-861-1768
www.thewatershed.com

Al-Anon Family Group
1-888-4AL-ANON (425-2666)
www.al-anon.alateen.org

Alcohol and Drug Abuse Hotline
800-ALCOHOL

Alcohol and Drug Addiction Treatment Programs
1-800-510-9435

Alcohol and Drug Helpline
1-800-821-4357

Alcoholism/Drug Addiction Treatment Center
800-477-3447

Mothers Against Drunk Driving
1-800-GET-MADD (438-6233)
www.madd.org

National Council on Alcoholism and Drug Dependence, Inc.
1-800-NCA-CALL (622-2255)
www.ncadd.org

National Health Services

AIDS/HIV Center for Disease Control and Prevention
800-CDC-INFO
888-232-6348 (TTY)
<http://www.cdc.gov/hiv/>

AIDS/STD National Hot Line
800-342-AIDS
800-227-8922 (STD line)

American Health Assistance Foundation
800-437-2423
www.ahaf.org

American Heart Association
800-242-8721
www.americanheart.org

American Lung Association
800-586-4872

American Stroke Association
1-888-4-STROKE
www.americanheart.org

Center for Disease Control and Prevention
800-CDC-INFO
888-232-6348 (TTY)
<http://www.cdc.gov/hiv/>

Elder Care Helpline
www.eldercarelink.com

Eye Care Council
800-960-EYES
www.seetolearn.com

National Health Information Center
800-336-4797
www.health.gov/nhic

National Cancer Information Center
800-227-2345
866-228-4327 (TTY)
www.cancer.org

National Institute on Deafness and
Other Communication Disorders
Information Clearinghouse
800-241-1044
800-241-1055 (TTY)
www.nidcd.nih.gov

Nursing Homes

Crown Care Center
3001 E Elm St.
Harrisonville, MO 64701
(816) 380-6525

Camden
2203 East Mechanic
Harrisonville, MO 64701
(816) 380-2622

Pleasant Hill Health and Rehab Center
1300 Broadway St
Pleasant Hill, MO 64080
(816) 540-2116

Foxwood Springs
1500 W Foxwood Dr
Raymore, MO 64083
(866) 869-3091

ABC Health Center
307 E South St
Harrisonville, MO 64701
(816) 380-7399

Golden Years
2001 Jefferson Parkway
Harrisonville, MO 64701
(816) 380-4731

Beautiful Savior Lutheran Home and
Manor
1003 S Cedar St
Belton, MO 64012
(816) 331-0781

Rehab Center of Raymore
600 E Sunrise Dr
Raymore, MO 64083
(816) 322-1991

Nutrition

American Dietetic Association
1-800-877-1600
www.eatright.org

American Dietetic Association Consumer
Nutrition Hotline
800-366-1655

Missouri Coordinated School Health
Coalition
PO Box 309 Columbia, MO 65205
info@healthykidsmo.org

WIC and Nutrition Services
573-751-6204
800-392-8209
Fax: 573-526-1470
info@health.mo.gov

Community Food and Nutrition
Assistance
573-751-6269
800-733-6251
CACFP@health.mo.gov

Optometrist (Eye)

Bauman Alan E, MD
Cass County Eye Care Center
424 E N Ave
Belton, MO 64012
(816) 322-6100

Cass County Eye Care
424 E North Ave,
Belton · (816) 322-6100

Pharmacy

CVS
1215 W Foxwood Dr
Raymore, MO 64083
(816) 318-8022

CVS
409 E North Ave
Belton, MO 64012
(816) 331-9716

CVS
300 S Commercial St,
Harrisonville, MO 64701
(816) 380-6566

Walgreens
1400 E North Ave
Belton, MO 64012
(816) 322-4177

Walgreens
505 S Commercial St,
Harrisonville, MO 64701
(816) 884-1891

Walgreens
1214 W Foxwood Dr,
Raymore, MO 64083
(816) 331-1410

Walmart
2015 W Foxwood Dr
Raymore, MO 64083
(816) 322-5455

Walmart
1700 Missouri 291
Harrisonville, MO 64701
(816) 884-5635

Price Chopper
520 S Commercial St
Harrisonville, MO 64701
(816) 380-3266

Price Chopper
900 W Foxwood Dr
Raymore, MO 64083
(816) 265-6121

Price Chopper
109 N Cedar St

Belton, MO 64012
(816) 322-1088

Price Chopper
2101 Missouri 7
Pleasant Hill, MO 64080
(816) 540-3009

Drexel Home town Pharmacy
203 E Main St
Drexel, MO 64742
(816) 657-2448

Pleasant Hill Drug
1905 Missouri 7
Pleasant Hill, MO 64080
(816) 540-4000

Gillen's
2820 Rock Haven Rd
Harrisonville, MO 64701
(816) 884-5115

Target
1106 E North Ave
Belton, MO 64012
(816) 331-3516

Red Cross Pharmacy
401 Main St.
Belton, MO 64012
(816) 892-1200

Rehab
Belton Regional Medical Center
17065 U.S. 71
Belton, MO 64012
(816) 348-1200

Cass Regional Medical Center
2800 Rock Haven Rd.
Harrisonville, MO 64701
(816) 380-3474

SERC
17134 Bel Ray Pl
Belton, MO 64012
(816) 318-0436

SERC
815 Westchester Ave, Harrisonville, MO
64701
(816) 380-3344

ETC
1610 Missouri 7, Pleasant Hill, MO
64080
(816) 540-2022

Senior Services

Alzheimer's Association
1-800-487-2585

American Association of Retired Persons
(AARP)
1-888-OUR-AARP (687-2277)
www.aarp.org

Americans with Disabilities Act
Information Line
1-800-514-0301
1-800-514-0383 [TTY]
www.usdoj.gov/crt/ada

American Association of Retired Persons
888-687-2277
www.aarp.org

Eldercare Locator
1-800-677-1116
www.eldercare.gov/eldercare/public/home.asp

Federal Information Center
1-800-333-4636
www.FirstGov.gov

U.S. Department of Veterans Affairs
1-800-513-7731
www.kcva.org

Education (GI Bill)
1-888-442-4551

Health Resource Center
877-222-8387

Insurance Center
800-669-8477

Veteran Special Issue Help Line
Includes Gulf War/Agent Orange
Helpline
800-749-8387

U.S. Department of Veterans Affairs
Mammography Helpline
888-492-7844

Memorial Program Service [includes
status of headstones and markers]
800-697-6947

Telecommunications Device for the
Deaf/Hearing Impaired
800-829-4833 (TTY)
www.vba.va.gov

Welfare Fraud Hotline
800-432-3913

General Online Healthcare Resources

Doctors and Dentists--General

[AMA Physician Select: Online Doctor Finder](#) (American Medical Association) [DocFinder](#) (Administrators in Medicine) [Find a Dentist](#) (Academy of General Dentistry) [Find a Dentist: ADA Member Directory](#) (American Dental Association) [Physician Compare](#) (Centers for Medicare & Medicaid Services)

Hospitals and Clinics--General

[Find a Health Center](#) (Health Resources and Services Administration) [Find a Provider: TRICARE Provider Directories](#) (TRICARE Management Activity) [Hospital Quality Compare](#) (Centers for Medicare & Medicaid Services)

Doctors and Dentists--Specialists

[ACOG's Physician Directory](#) (American College of Obstetricians and Gynecologists) [ACR: Geographic Membership Directory](#) (American College of Rheumatology) [American College of Surgeons Membership Directory](#) (American College of Surgeons) [American Osteopathic Association D.O. Database](#) (American Osteopathic Association) [ASGE: Find a Doctor](#) (American Society for Gastrointestinal Endoscopy) [Cancer Genetics Services Directory](#) (National Cancer Institute) [Child and Adolescent Psychiatrist Finder](#) (American Academy of Child and Adolescent Psychiatry) [Dystonia: Find a Health Care Professional](#) (Dystonia Medical Research Foundation) [Expert Locator: Immunologists](#) (Jeffrey Modell Foundation) [Find a Dermatologic Surgeon](#) (American Society for Dermatologic Surgery) [Find a Dermatologist](#) (American Academy of Dermatology) [Find a Gastroenterologist](#) (American College of Gastroenterology) [Find a Gynecologic Oncologist](#) (Society of Gynecologic Oncologists) [Find a Hand Surgeon](#) (American Society for Surgery of the Hand) [Find a Hematologist](#) (American Society of Hematology) [Find a Neurologist](#) (American Academy of Neurology) [Find a Pediatric Dentist](#) (American Academy of Pediatric Dentistry) [Find a Pediatrician or Pediatric Specialist](#) (American Academy of Pediatrics) [Find a Periodontist](#) (American Academy of Periodontology) [Find a Physical Medicine & Rehabilitation Physician](#) (American Academy of Physical Medicine and Rehabilitation) [Find a Plastic Surgeon](#) (American Society of Plastic Surgeons) [Find a Podiatrist](#) (American Podiatric Medical Association) [Find a Thyroid Specialist](#) (American Thyroid Association) [Find a Urologist](#) (American Urological Association) [Find an ACFAS Physician](#) (American College of Foot and Ankle Surgeons) [Find an Allergist/Immunologist: Search](#) (American Academy of Allergy, Asthma, and Immunology) [Find an Endocrinologist](#) (Hormone Health Network) [Find an Eye M.D.](#) (American Academy of Ophthalmology) [Find an Interventional Radiologist](#) (Society of Interventional Radiology) [Find an Oncologist](#) (American Society of Clinical Oncology) [Find an Oral and Maxillofacial Surgeon](#) (American Association of Oral and Maxillofacial Surgeons) [Find an Orthopaedic Foot and Ankle MD](#) (American Orthopaedic Foot and Ankle Society) [Find an Otolaryngologist \(ENT\)](#) (American Academy of Otolaryngology--Head and Neck Surgery) [Finding an Eye Care Professional](#) (National Eye Institute) [GI Locator Service](#) (American Gastroenterological Association)

Other Healthcare Providers

[AMTA's Find a Massage Therapist](#) (American Massage Therapy Association) [Cancer Genetics Services Directory](#) (National Cancer Institute) [Find a Diabetes Educator](#) (American Association of Diabetes Educators) [Find a Genetic Counselor](#) (National Society of Genetic Counselors) [Find a Midwife](#) (American College of Nurse-Midwives) [Find a Nurse Practitioner](#) (American Academy of Nurse Practitioners) [Find a Physical Therapist](#) (American Physical Therapy Association) [Find a Professional: Online Directory of Audiology and Speech-Language Pathology Programs](#) (American Speech-Language-Hearing Association) [Find a Registered Dietitian](#) (Academy of Nutrition and Dietetics) [Find a Therapist](#) (Anxiety Disorders Association of America) [Find an Audiologist](#) (American Academy of Audiology) [Manual Lymphatic Drainage Therapists](#) (National Lymphedema Network) [National Register of Health Service Providers in Psychology](#) (National Register of Health Service Providers in Psychology) [NCCAOM: Find Nationally Certified Practitioners](#) (National Certification Commission for Acupuncture and Oriental Medicine) [Search for an Emergency Contraception Provider in the United States](#) (Princeton University, Office of Population Research)

Hospitals and Clinics--Specialized

[Accredited Birth Centers](#) (Commission for the Accreditation of Birth Centers) [Alzheimer's Disease Research Centers](#) (National Institute on Aging) [Cystic Fibrosis Foundation: Find a Chapter](#) (Cystic Fibrosis Foundation) [Cystic Fibrosis Foundation: Find an Accredited Care Center](#) (Cystic Fibrosis Foundation) [Dialysis Facility Compare](#) (Centers for Medicare & Medicaid Services) [FDA Certified Mammography Facilities](#) (Food and Drug Administration) [Find a Free Clinic](#) (National Association of Free Clinics) [Find an Indian Health Service Facility](#) (Indian Health Service) [Find Treatment Centers](#) (American Cancer Society) [Genetics Clinic Directory Search](#) (University of Washington) [Locate a Sleep Center in the United States by Zip Code](#) (American Academy of Sleep Medicine) [MDA ALS Centers](#) (Muscular Dystrophy Association) [Mental Health Services Locator](#) (Substance Abuse and Mental Health Services Administration) [NCI Designated Cancer Centers](#) (National Cancer Institute) [Neurofibromatosis Specialists](#) (Children's Tumor Foundation) [Post-Polio Directory 2011: Post-Polio Clinics, Health Professionals, Support Groups](#) (Post-Polio Health International including International Ventilator Users Network) [Spina Bifida Clinic Directory](#) (Spina Bifida Association of America) [Substance Abuse Treatment Facility Locator](#) (Substance Abuse and Mental Health Services Administration) [Transplant Center Search Form](#) (BMT InfoNet) [U.S. NMDP Transplant Centers](#) (National Marrow Donor Program) [VA Health Care Facilities Locator & Directory](#) (Veterans Health Administration) [Where to Donate Blood](#) (AABB) [Where to Donate Cord Blood](#) (National Marrow Donor Program)

Other Healthcare Facilities and Services

[Alzheimer's Disease Resource Locator](#) (Fisher Center for Alzheimer's Research Foundation) [American College of Radiology Accredited Facility Search](#) (American College of Radiology) [APA District Branch / State Association Directory](#) (American Psychiatric Association) [Directory of Organizations \(Deafness and Communication Disorders\)](#) (National Institute on Deafness and Other Communication Disorders) [Dog Guide Schools in the United States](#) (American Foundation for the Blind) [Eldercare Locator](#) (Dept. of Health and Human Services) [Find a Hospice or Palliative Care Program](#) (National Hospice and Palliative Care Organization) [Find Services \(for People with Vision Loss\)](#) (American Foundation for the Blind) [Find Urgent Care Centers by State](#) (Urgent Care Association of America) [Genetic Testing Laboratory Directory](#) (University of Washington) [Home Health Compare](#) (Centers for Medicare & Medicaid Services) [Medicare: Helpful Contacts](#) (Centers for Medicare & Medicaid Services) [Muscular Dystrophy Association Clinics and Services](#) (Muscular Dystrophy Association) [National Foster Care and Adoption Directory Search](#) (Children's Bureau) [Nursing Home Compare](#) (Centers for Medicare & Medicaid Services) [Organizations That Offer Support Services](#) (National Cancer Institute) [Poison Control Centers](#) (American Association of Poison Control Centers) [Resources and Information for Parents about Braille](#) (American Foundation for the Blind) [State-Based Physical Activity Program Directory](#) (Centers for Disease Control and Prevention) [TSA Chapters in the USA](#) (Tourette Syndrome Association) [Violence against Women: Resources by State](#) (Dept. of Health and Human Services, Office on Women's Health) [Where to Find Hair Loss Accessories and Breast Cancer Products](#) (American Cancer Society)

SOURCE: MedlinePlus provides links to directories to help you find libraries, health professionals, services and facilities. NLM does not endorse or recommend the organizations that produce these directories, nor the individuals or organizations that are included in the directories.

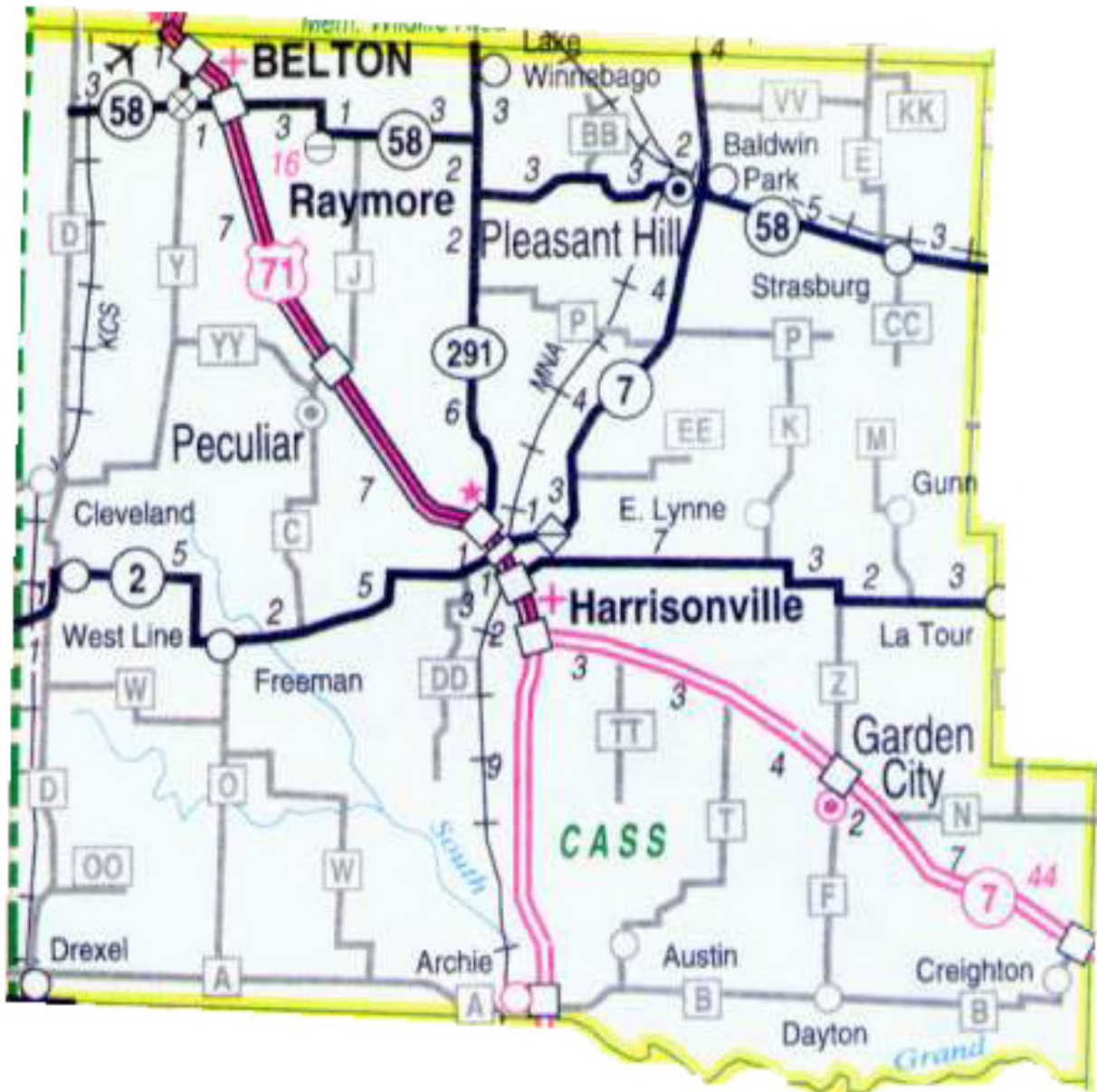
V. Detail Exhibits

[VVV Research & Development INC]

Patient Origin & Access

[VVV Research & Development INC]

Cass County Missouri Service Area Map



HOSPITAL INDUSTRY DATA INSTITUTE
CRMC Zip Market Penetration - Inpatient / Outpatient

Cass Regional Medical Center											
#	ZIP	CITY	County	CRMC IP	CRMC OP	CRMC Inpatients			CRMC ER/Outpatients		
				3 YR Total	3 YR Total	FFY10	FFY11	FFY12	FFY10	FFY11	FFY12
1	64701	Harrisonville, MO	CASS	2,151	50,594	726	708	717	17,298	17,048	16,247
2	64747	Garden City, MO	CASS	326	10,960	110	105	111	3,779	3,665	3,516
3	64080	Pleasant Hill, MO	CASS	372	10,600	142	115	116	3,649	3,598	3,354
4	64078	Peculiar, MO	CASS	303	10,157	85	107	111	3,044	3,583	3,531
5	64725	Archie, MO	CASS	156	5,473	45	55	56	1,838	1,848	1,786
6	64012	Belton, MO	CASS	103	5,206	29	42	33	1,551	1,791	1,865
7	64720	Adrian, MO	BATES	156	5,077	55	53	48	1,622	1,689	1,766
8	64083	Raymore, MO	CASS	115	3,356	40	29	46	1,089	1,091	1,177
9	64746	Freeman, MO	CASS	95	3,204	34	32	29	1,041	1,059	1,104
10	64742	Drexel, MO	BATES	93	2,812	29	25	39	906	969	937
11	64040	Holden, MO	JOHNSON	107	2,552	43	30	34	852	810	890
12	64730	Butler, MO	BATES	87	2,506	32	20	35	742	890	873
13	64739	Creighton, MO	HENRY	105	2,363	33	41	31	814	806	743
14	64734	Cleveland, MO	CASS	36	1,389	9	15	12	455	463	470
15	64061	Kingsville, MO	JOHNSON	56	1,146	24	15	17	408	362	376
16	64788	Urish, MO	HENRY	24	1,116	14	10		356	367	393
17	64735	Ointon, MO	HENRY	60	925	18	22	20	322	339	264
18	64030	Grandview, MO	JACKSON	33	740	10	10	13	228	234	279

HOSPITAL INDUSTRY DATA INSTITUTE

CRMC Market Penetration by Zip - Inpatient*

Cass Regional Medical Center		CRMC	FFY10			FFY11			FFY12			
#	ZIP	CITY	3 YR Total	IP Disc	MShr	CRMC	IP Disc	MShr	CRMC	IP Disc	MShr	CRMC
1	64701	Harrisonville, MO	2,151	2,135	34.0%	726	2,119	33.4%	708	2,284	31.4%	717
2	64080	Pleasant Hill, MO	372	1,646	8.6%	142	1,488	7.7%	115	1,594	7.3%	116
3	64747	Garden City, MO	326	499	22.0%	110	482	21.8%	105	489	22.7%	111
4	64078	Peculiar, MO	303	986	8.6%	85	1,010	10.6%	107	1,012	11.0%	111
5	64720	Adrian, MO	156	624	8.8%	55	592	9.0%	53	537	8.9%	48
6	64725	Archie, MO	156	251	17.9%	45	278	19.8%	55	239	23.4%	56
7	64083	Raymore, MO	115	2,355	1.7%	40	2,401	1.2%	29	2,290	2.0%	46
8	64040	Holden, MO	107	949	4.5%	43	817	3.7%	30	914	3.7%	34
9	64739	Creighton, MO	105	166	19.9%	33	143	28.7%	41	147	21.1%	31
10	64012	Belton, MO	103	3,572	0.8%	29	3,478	1.2%	42	3,645	0.9%	33
11	64746	Freeman, MO	95	169	20.1%	34	153	20.9%	32	180	16.1%	29
12	64742	Drexel, MO	93	251	11.6%	29	233	10.7%	25	291	13.4%	39
13	64730	Butler, MO	87	1,434	2.2%	32	1,411	1.4%	20	1,073	3.3%	35
14	64735	Ointon, MO	60	2,215	0.8%	18	2,415	0.9%	22	2,537	0.8%	20
15	64061	Kingsville, MO	56	404	5.9%	24	399	3.8%	15	326	5.2%	17
16	64093	Warrensburg, MO	48	2,960	0.7%	21	2,944	0.5%	15	3,078	0.4%	12
17	64734	Cleveland, MO	36	200	4.5%	9	194	7.7%	15	198	6.1%	12
18	64030	Grandview, MO	33	3,296	0.3%	10	3,280	0.3%	10	3,349	0.4%	13

HOSPITAL INDUSTRY DATA INSTITUTE

CRMC Market Penetration - Outpatient (ER/OP SRG/Clinical Services)

Cass Regional Medical Center		CRMC	FFY10			FFY11			FFY12			
#	ZIP	CITY	3 YR Total	OP Disc	MShr	CRMC	OP Disc	MShr	CRMC	OP Disc	MShr	CRMC
1	64701	Harrisonville, MO	50,594	26,986	64.1%	17,298	27,061	63.0%	17,048	26,591	61.1%	16,247
2	64747	Garden City, MO	10,960	7,157	52.8%	3,779	7,048	52.0%	3,665	6,801	51.7%	3,516
3	64080	Pleasant Hill, MO	10,600	16,738	21.8%	3,649	17,296	20.8%	3,598	17,378	19.3%	3,354
4	64078	Peculiar, MO	10,157	11,399	26.7%	3,044	12,440	28.8%	3,583	12,175	29.0%	3,531
5	64725	Archie, MO	5,473	3,522	52.2%	1,838	3,949	46.8%	1,848	3,435	52.0%	1,786
6	64012	Belton, MO	5,206	39,773	3.9%	1,551	40,699	4.4%	1,791	40,534	4.6%	1,865
7	64720	Adrian, MO	5,077	9,115	17.8%	1,622	10,052	16.8%	1,689	9,103	19.4%	1,766
8	64083	Raymore, MO	3,356	25,324	4.3%	1,089	26,603	4.1%	1,091	26,742	4.4%	1,177
9	64746	Freeman, MO	3,204	2,115	49.2%	1,041	2,197	48.2%	1,059	2,244	49.2%	1,104
10	64742	Drexel, MO	2,812	2,627	34.5%	906	2,536	38.2%	969	2,511	37.3%	937
11	64040	Holden, MO	2,552	10,144	8.4%	852	10,253	7.9%	810	9,887	9.0%	890
12	64730	Butler, MO	2,506	23,932	3.1%	742	30,706	2.9%	890	24,260	3.6%	873
13	64739	Creighton, MO	2,363	2,585	31.5%	814	2,264	35.6%	806	2,468	30.1%	743
14	64734	Cleveland, MO	1,389	2,265	20.1%	455	2,175	21.3%	463	2,283	20.6%	470
15	64061	Kingsville, MO	1,146	4,296	9.5%	408	4,521	8.0%	362	3,918	9.6%	376
16	64788	Urish, MO	1,116	5,084	7.0%	356	5,104	7.2%	367	5,311	7.4%	393



Cass County - MO Residents

PO103E - 2010
Annual

Discharges by Hospital, Age, and Major Service

Hospital	Total		Pediatric				Adult Medical/Surgical						Psychiatric		Obstetric		Newborn		Pct Surg
	Discharges	Cases	Age 0 - 17		Age 18 - 44		Age 45 - 64		Age 65 - 74		Age 75 +		Cases	Pct	Cases	Pct	Cases	Pct	
			Cases	Pct	Cases	Pct	Cases	Pct	Cases	Pct	Cases	Pct							
St. Joseph Med Center-KC MO	1,668	14.0	2	0.1	156	9.4	364	21.8	291	17.4	361	21.6	10	0.6	258	15.5	226	13.5	32.8
Research Medical Center-KC MO	1,460	12.3	2	0.1	163	11.2	415	28.4	280	19.2	375	25.7	30	2.1	103	7.1	92	6.3	33.4
Cass Regn Med Cntr-Harrsvl MO	1,252	10.5	16	1.3	148	11.8	319	25.5	194	15.5	456	36.4	119	9.5	0	0	0	0	12.7
Research Belton Hospital-MO	1,059	8.9	1	0.1	129	12.2	274	25.9	200	18.9	443	41.8	12	1.1	0	0	0	0	26.3
St. Luke's East-Lee's Summt MO	806	6.8	5	0.6	74	9.2	143	17.7	76	9.4	125	15.5	0	0	197	24.4	186	23.1	23.9
Menorah Med Ctr-Ovrln Park KS	668	5.6	2	0.3	47	7.0	152	22.8	96	14.4	89	13.3	2	0.3	144	21.6	136	20.4	32.0
Saint Luke's Hospital of KC MO	538	4.5	2	0.4	77	14.3	128	23.8	114	21.2	81	15.1	1	0.2	69	12.8	66	12.3	34.4
Univ of Kansas Hospital-KC KS	527	4.4	14	2.7	101	19.2	189	35.9	99	18.8	92	17.5	6	1.1	15	2.8	11	2.1	41.6
Lee's Summit Medical Center-MO	467	3.9	2	0.4	61	13.1	140	30.0	107	22.9	151	32.3	6	1.3	0	0	0	0	22.3
Overland Park Rgnl Med Cntr-KS	371	3.1	5	1.3	35	9.4	43	11.6	43	11.6	39	10.5	0	0	110	29.6	96	25.9	29.4
St Lukes S Hosp-Ovrln Prk KS	296	2.5	0	0	17	5.7	48	16.2	25	8.4	36	12.2	1	0.3	84	28.4	85	28.7	24.3
Children's Mercy Hosp-KC MO	292	2.5	284	97.3	7	2.4	0	0	0	0	0	0	1	0.3	0	0	0	0	28.1
Truman Med Cntr Lakewood-KC MO	292	2.5	4	1.4	26	8.9	21	7.2	3	1.0	6	2.1	80	27.4	79	27.1	73	25.0	11.3
Shawnee Mission Med Center-KS	277	2.3	0	0	26	9.4	68	24.5	27	9.7	19	6.9	33	11.9	54	19.5	50	18.1	38.3
Research Psychiatric Ctr-KC MO	268	2.3	0	0	0	0	0	0	3	1.1	5	1.9	260	97.0	0	0	0	0	0
Centerpoint MC-Independence MO	218	1.8	2	0.9	31	14.2	46	21.1	27	12.4	31	14.2	0	0	43	19.7	38	17.4	33.0
Truman Med Cntr Hsp Hill-KC MO	212	1.8	0	0	44	20.8	50	23.6	4	1.9	2	0.9	36	17.0	42	19.8	34	16.0	21.2
Chldrn's Mercy S.-Ovrld Prk KS	205	1.7	205	100.0	0	0	0	0	0	0	0	0	0	0	0	0	0	0	0
Nonpartic. MO Hosps - Est	161	1.4	9	5.6	0	0	10	6.2	3	1.9	5	3.1	134	83.2	0	0	0	0	4.3
St. Mary's MC-Blue Springs MO	143	1.2	0	0	11	7.7	27	18.9	7	4.9	26	18.2	1	0.7	38	26.6	33	23.1	23.1
North Kansas City Hospital-MO	115	1.0	0	0	23	20.0	47	40.9	18	15.7	13	11.3	1	0.9	7	6.1	6	5.2	41.7
Olathe Medical Center Inc - KS	89	0.7	0	0	12	13.5	22	24.7	16	18.0	16	18.0	1	1.1	11	12.4	11	12.4	41.6
Crittenton Chldrn's Ctr-KC MO	83	0.7	0	0	0	0	0	0	0	0	0	0	83	100.0	0	0	0	0	0
Golden Villy Mem HC-Clinton MO	64	0.5	1	1.6	3	4.7	5	7.8	8	12.5	4	6.3	0	0	21	32.8	22	34.4	14.1
St. Luke's Northlnd-Smithvle	46	0.4	0	0	0	0	0	0	0	0	0	0	46	100.0	0	0	0	0	0
Univ Hosp /Clinics-Columbia MO	27	0.2	5	18.5	6	22.2	11	40.7	2	7.4	0	0	3	11.1	0	0	0	0	44.4
Kindred Hospital KC - MO	26	0.2	0	0	4	15.4	8	30.8	6	23.1	8	30.8	0	0	0	0	0	0	26.9
Bates Cnty Mem Hosp-Butler MO	25	0.2	1	4.0	7	28.0	8	32.0	5	20.0	3	12.0	1	4.0	0	0	0	0	24.0
Nevada Regional Med Center-MO	25	0.2	0	0	0	0	1	4.0	0	0	0	0	18	72.0	4	16.0	2	8.0	12.0
Heartland Behavrl HS-Nevada MO	22	0.2	0	0	0	0	0	0	0	0	0	0	22	100.0	0	0	0	0	0
* MO Residents/MN Hospitals	19	0.2	2	10.5	6	31.6	10	52.6	1	5.3	0	0	0	0	0	0	0	0	73.7
Liberty Hospital - MO	18	0.2	0	0	4	22.2	9	50.0	3	16.7	0	0	0	0	1	5.6	1	5.6	33.3
Saint Luke's Cancer Inst-KC MO	12	0.1	0	0	4	33.3	1	8.3	0	0	7	58.3	0	0	0	0	0	0	8.3
Western MO MC-Warrensburg MO	12	0.1	0	0	1	8.3	1	8.3	4	33.3	2	16.7	0	0	2	16.7	2	16.7	16.7
St. Luke's Northlnd-Bry Rd-KC	10	0.1	0	0	1	10.0	3	30.0	1	10.0	0	0	0	0	3	30.0	2	20.0	50.0
St. John's Hosp-Springfield MO	9	0.1	0	0	3	33.3	3	33.3	0	0	0	0	1	11.1	1	11.1	1	11.1	44.4
Miami County Med Cntr-Paola KS	8	0.1	1	12.5	0	0	3	37.5	1	12.5	3	37.5	0	0	0	0	0	0	62.5
Providence Med Center-KC KS	8	0.1	0	0	4	50.0	1	12.5	0	0	1	12.5	0	0	1	12.5	1	12.5	37.5
Bothwell Rgnl HC-Sedalia MO	7	0.1	0	0	4	57.1	1	14.3	0	0	2	28.6	0	0	0	0	0	0	57.1
CoxHealth-Springfield MO	7	0.1	0	0	0	0	3	42.9	2	28.6	0	0	2	28.6	0	0	0	0	28.6
* MO Residents/Arkansas Hospitals	7	0.1	1	14.3	0	0	1	14.3	3	42.9	2	28.6	0	0	0	0	0	0	14.3
* MO Residents/Colorado Hosps	6	0.1	0	0	0	0	4	66.7	2	33.3	0	0	0	0	0	0	0	0	33.3
* MO Residents/Nebraska Hosps	6	0.1	4	66.7	0	0	0	0	1	16.7	0	0	1	16.7	0	0	0	0	33.3
Mercy Hlth Ctr - Fort Scott KS	5	0.0	0	0	2	40.0	0	0	1	20.0	2	40.0	0	0	0	0	0	0	60.0
Other Hospitals	56	0.5	3	5.4	12	21.4	11	19.6	7	12.5	11	19.6	8	14.3	2	3.6	2	3.6	30.4
Total	11,892	100.0	573	4.8	1,249	10.5	2,590	21.8	1,680	14.1	2,416	20.3	919	7.7	1,289	10.8	1,176	9.9	26.4



Cass County - MO Residents

PO103E - 2011
Annual

Discharges by Hospital, Age, and Major Service

Hospital	Total Discharges		Pediatric		Adult Medical/Surgical						Psychiatric		Obstetric		Newborn		Pct Surg		
	Cases	Pct	Cases	Pct	Age 0 - 17	Age 18 - 44	Age 45 - 64	Age 65 - 74	Age 75 +	Cases	Pct	Cases	Pct	Cases	Pct	Cases		Pct	
St. Joseph Med Center-KC MO	1,611	13.7	7	0.4	153	9.5	333	20.7	241	15.0	343	21.3	9	0.6	271	16.8	254	15.8	28.2
Research Medical Center-KC MO	1,469	12.4	6	0.4	187	12.7	414	28.2	280	19.1	324	22.1	52	3.5	103	7.0	103	7.0	30.8
Cass Regn Med Cntr-Harrsnvl MO	1,230	10.4	8	0.7	142	11.5	344	28.0	232	18.9	399	32.4	105	8.5	0	0	0	0	13.8
Research Belton Hospital-MO	1,209	10.2	3	0.2	137	11.3	296	24.5	219	18.1	540	44.7	13	1.1	1	0.1	0	0	20.9
St. Luke's East-Lee's Summt MO	858	7.3	5	0.6	66	7.7	149	17.4	112	13.1	128	14.9	5	0.6	200	23.3	193	22.5	25.3
Menorah Med Ctr-Ovrld Park KS	685	5.8	1	0.1	53	7.7	138	20.1	99	14.5	143	20.9	1	0.1	126	18.4	124	18.1	36.1
Saint Luke's Hospital of KC MO	526	4.5	4	0.8	104	19.8	119	22.6	113	21.5	88	16.7	3	0.6	50	9.5	45	8.6	36.1
Lee's Summit Medical Center-MO	472	4.0	1	0.2	50	10.6	166	35.2	116	24.6	134	28.4	5	1.1	0	0	0	0	23.7
Univ of Kansas Hospital-KC KS	441	3.7	4	0.9	72	16.3	176	39.9	92	20.9	82	18.6	5	1.1	5	1.1	5	1.1	40.1
Children's Mercy Hosp-KC MO	363	3.1	351	96.7	6	1.7	0	0	0	0	0	0	1	0.3	2	0.6	3	0.8	30.0
Overland Park Rgnl Med Cntr-KS	352	3.0	4	1.1	32	9.1	60	17.0	34	9.7	29	8.2	0	0	95	27.0	98	27.8	34.1
Truman Med Cntr Lakewood-KC MO	289	2.4	2	0.7	27	9.3	39	13.5	2	0.7	2	0.7	86	29.8	67	23.2	64	22.1	11.4
Research Psychiatric Ctr-KC MO	274	2.3	0	0	0	0	0	3	1.1	6	2.2	265	96.7	0	0	0	0	0	0
St Lukes S Hosp-Ovrld Prk KS	271	2.3	0	0	9	3.3	41	15.1	36	13.3	40	14.8	0	0	73	26.9	72	26.6	31.0
Shawnee Mission Med Center-KS	252	2.1	0	0	32	12.7	67	26.6	27	10.7	13	5.2	30	11.9	41	16.3	42	16.7	44.4
Centerpoint MC-Independence MO	221	1.9	2	0.9	34	15.4	53	24.0	26	11.8	27	12.2	0	0	44	19.9	35	15.8	38.9
Chldrn's Mercy S.-Ovrld Prk KS	179	1.5	179	100.0	0	0	0	0	0	0	0	0	0	0	0	0	0	0	0
Truman Med Cntr Hsp Hill-KC MO	156	1.3	1	0.6	38	24.4	51	32.7	3	1.9	0	0	18	11.5	24	15.4	21	13.5	16.7
Crittenton Childrn's Ctr-KC MO	132	1.1	0	0	0	0	0	0	0	0	0	0	132	100.0	0	0	0	0	0
St. Mary's MC-Blue Springs MO	99	0.8	1	1.0	3	3.0	13	13.1	5	5.1	10	10.1	3	3.0	33	33.3	31	31.3	16.2
* Two Rivrs Behav Hlth Sys-KC MO	93	0.8	0	0	0	0	0	1	1.1	0	0	0	92	98.9	0	0	0	0	0
Olathe Medical Center Inc - KS	89	0.8	0	0	16	18.0	21	23.6	17	19.1	17	19.1	0	0	9	10.1	9	10.1	36.0
North Kansas City Hospital-MO	83	0.7	0	0	10	12.0	39	47.0	11	13.3	10	12.0	1	1.2	6	7.2	6	7.2	41.0
* Nonpartic. MO Hosps - Est	57	0.5	0	0	3	5.3	7	12.3	5	8.8	8	14.0	34	59.6	0	0	0	0	3.5
Golden Vily Mem HC-Clinton MO	47	0.4	1	2.1	2	4.3	9	19.1	3	6.4	2	4.3	1	2.1	15	31.9	14	29.8	23.4
St. Luke's North-Smithville	33	0.3	0	0	0	0	1	3.0	0	0	0	0	31	93.9	1	3.0	0	0	0
Bates Cnty Mem Hosp-Butler MO	32	0.3	1	3.1	8	25.0	12	37.5	3	9.4	7	21.9	0	0	1	3.1	0	0	3.1
Kindred Hospital KC - MO	28	0.2	0	0	5	17.9	15	53.6	5	17.9	3	10.7	0	0	0	0	0	0	14.3
Univ Hosp /Clinics-Columbia MO	19	0.2	1	5.3	4	21.1	11	57.9	0	0	0	0	1	5.3	1	5.3	1	5.3	68.4
* MO Residents/MN Hospitals	16	0.1	3	18.8	3	18.8	6	37.5	4	25.0	0	0	0	0	0	0	0	0	81.3
Western MO MC-Warrensburg MO	12	0.1	0	0	1	8.3	2	16.7	0	0	0	0	0	0	5	41.7	4	33.3	16.7
Nevada Regional Med Center-MO	11	0.1	0	0	0	0	1	9.1	0	0	0	0	5	45.5	3	27.3	2	18.2	9.1
CoxHealth-Springfield MO	10	0.1	0	0	0	0	3	30.0	6	60.0	0	0	1	10.0	0	0	0	0	30.0
Liberty Hospital - MO	10	0.1	0	0	5	50.0	1	10.0	3	30.0	1	10.0	0	0	0	0	0	0	10.0
* MO Residents/Nebraska Hospitals	10	0.1	0	0	0	0	8	80.0	2	20.0	0	0	0	0	0	0	0	0	60.0
* MO Residents/Oth IL Hospitals	10	0.1	1	10.0	6	60.0	0	0	0	0	1	10.0	0	0	1	10.0	1	10.0	20.0
Heartland Behavrl HS-Nevada MO	9	0.1	0	0	0	0	0	0	0	0	0	0	9	100.0	0	0	0	0	0
Mercy Hospital-Springfield, MO	9	0.1	0	0	2	22.2	3	33.3	0	0	4	44.4	0	0	0	0	0	0	11.1
Providence Med Center-KC KS	8	0.1	0	0	0	0	3	37.5	2	25.0	3	37.5	0	0	0	0	0	0	50.0
Cushing Mem Hsp-Leavenworth KS	7	0.1	0	0	1	14.3	0	0	1	14.3	0	0	5	71.4	0	0	0	0	0
* MO Residents/Iowa Hospitals	7	0.1	2	28.6	2	28.6	2	28.6	1	14.3	0	0	0	0	0	0	0	0	42.9
St. Luke's North Hosp-KC MO	7	0.1	0	0	1	14.3	2	28.6	0	0	0	0	0	0	2	28.6	2	28.6	57.1
Heartland Reg MC-St Jsph MO	6	0.1	0	0	2	33.3	3	50.0	0	0	1	16.7	0	0	0	0	0	0	33.3
Mercy Hlth Ctr - Fort Scott KS	6	0.1	0	0	0	0	0	0	0	6	100.0	0	0	0	0	0	0	0	0
* MO Residents/Arkansas Hospitals	6	0.1	0	0	0	0	1	16.7	0	0	3	50.0	0	0	1	16.7	1	16.7	33.3
* MO Residents/Colorado Hosps	6	0.1	1	16.7	3	50.0	1	16.7	0	0	1	16.7	0	0	0	0	0	0	50.0
Mercy Hospital St. Louis - MO	5	0.0	3	60.0	0	0	1	20.0	0	0	1	20.0	0	0	0	0	0	0	20.0
Miami County Med Cntr-Paola KS	5	0.0	0	0	0	0	0	0	2	40.0	3	60.0	0	0	0	0	0	0	60.0
Saint Luke's Cancer Inst-KC MO	5	0.0	0	0	2	40.0	0	0	1	20.0	2	40.0	0	0	0	0	0	0	0
Other Hospitals	65	0.6	5	7.7	8	12.3	19	29.2	5	7.7	11	16.9	14	21.5	3	4.6	0	0	16.9
Total	11,800	100.0	597	5.1	1,229	10.4	2,630	22.3	1,712	14.5	2,392	20.3	927	7.9	1,183	10.0	1,130	9.6	25.6

* Annual total estimated or reporting year varies - See hospital page in PO101 Report for details.



Cass Regional Medical Center - Harrisonville, MO

PO102E-2011
Annual

Discharges by Major Service, Age, and Patient ZIP Code of Residence

ZIP	City	Total Discharges		Pediatric		Adult Medical/Surgical										Psychiatric		Obstetric		Newborn		Surg
		Cases	Pct	Cases	Pct	Age 0 - 17	Age 18 - 44	Age 45 - 64	Age 65 - 74	Age 75 +	Cases	Pct	Cases	Pct	Cases	Pct	Cases	Pct	Cases	Pct	Pct	
64701	Harrisonville, MO	708	43.9	2	0.3	71	10.0	184	26.0	128	18.1	267	37.7	56	7.9	0	0	0	0	0	11.2	
64080	Pleasant Hill, MO	115	7.1	2	1.7	17	14.8	34	29.6	17	14.8	38	33.0	7	6.1	0	0	0	0	0	19.1	
64078	Peculiar, MO	107	6.6	2	1.9	17	15.9	40	37.4	17	15.9	25	23.4	6	5.6	0	0	0	0	0	19.6	
64747	Garden City, MO	105	6.5	1	1.0	17	16.2	26	24.8	31	29.5	20	19.0	10	9.5	0	0	0	0	0	15.2	
64725	Archie, MO	55	3.4	0	0	1	1.8	17	30.9	17	30.9	15	27.3	5	9.1	0	0	0	0	0	18.2	
64720	Adrian, MO	53	3.3	1	1.9	5	9.4	14	26.4	8	15.1	22	41.5	3	5.7	0	0	0	0	0	18.9	
64012	Belton, MO	41	2.5	0	0	7	17.1	18	43.9	6	14.6	1	2.4	9	22.0	0	0	0	0	0	9.8	
64739	Creighton, MO	41	2.5	1	2.4	7	17.1	12	29.3	11	26.8	10	24.4	0	0	0	0	0	0	0	17.1	
64746	Freeman, MO	32	2.0	1	3.1	4	12.5	9	28.1	4	12.5	10	31.3	4	12.5	0	0	0	0	0	21.9	
64040	Holden, MO	30	1.9	0	0	1	3.3	11	36.7	5	16.7	11	36.7	2	6.7	0	0	0	0	0	16.7	
64083	Raymore, MO	29	1.8	0	0	4	13.8	3	10.3	2	6.9	14	48.3	6	20.7	0	0	0	0	0	10.3	
64742	Drexel, MO	25	1.5	0	0	8	32.0	5	20.0	5	20.0	6	24.0	1	4.0	0	0	0	0	0	20.0	
64735	Clinton, MO	22	1.4	0	0	4	18.2	8	36.4	1	4.5	0	0	9	40.9	0	0	0	0	0	22.7	
64730	Butler, MO	20	1.2	1	5.0	3	15.0	3	15.0	4	20.0	3	15.0	6	30.0	0	0	0	0	0	10.0	
64061	Kingsville, MO	15	0.9	0	0	4	26.7	3	20.0	2	13.3	3	20.0	3	20.0	0	0	0	0	0	13.3	
64734	Cleveland, MO	15	0.9	0	0	0	0	5	33.3	4	26.7	4	26.7	2	13.3	0	0	0	0	0	33.3	
64093	Warrensburg, MO	14	0.9	0	0	0	0	0	0	1	7.1	2	14.3	11	78.6	0	0	0	0	0	0	
64030	Grandview, MO	11	0.7	0	0	1	9.1	0	0	5	45.5	2	18.2	3	27.3	0	0	0	0	0	9.1	
64772	Nevada, MO	11	0.7	0	0	0	0	2	18.2	0	0	1	9.1	8	72.7	0	0	0	0	0	9.1	
64788	Urigh, MO	10	0.6	0	0	4	40.0	1	10.0	2	20.0	2	20.0	1	10.0	0	0	0	0	0	10.0	
64723	Amsterdam, MO	9	0.6	1	11.1	3	33.3	1	11.1	2	22.2	2	22.2	0	0	0	0	0	0	0	11.1	
65355	Warsaw, MO	9	0.6	0	0	1	11.1	2	22.2	0	0	2	22.2	4	44.4	0	0	0	0	0	11.1	
64081	Lees Summit, MO	6	0.4	0	0	0	0	5	83.3	0	0	0	0	1	16.7	0	0	0	0	0	16.7	
64131	Kansas City, MO	6	0.4	0	0	0	0	1	16.7	0	0	0	0	5	83.3	0	0	0	0	0	0	
66209	Shawnee Mission, KS	6	0.4	0	0	0	0	0	0	1	16.7	0	0	5	83.3	0	0	0	0	0	0	
64015	Blue Springs, MO	5	0.3	0	0	2	40.0	0	0	0	0	0	0	3	60.0	0	0	0	0	0	0	
64019	Centerview, MO	5	0.3	0	0	0	0	1	20.0	0	0	2	40.0	2	40.0	0	0	0	0	0	0	
64050	Independence, MO	5	0.3	0	0	1	20.0	0	0	1	20.0	0	0	3	60.0	0	0	0	0	0	0	
64779	Rich Hill, MO	5	0.3	0	0	0	0	5	100.0	0	0	0	0	0	0	0	0	0	0	0	0	
	Other ZIP codes	99	6.1	0	0	11	11.1	16	16.2	7	7.1	20	20.2	45	45.5	0	0	0	0	0	10.1	
	Hospital Total	1,614	100.0	12	0.7	193	12.0	426	26.4	281	17.4	482	29.9	220	13.6	0	0	0	0	0	13.6	

© 2012 Hospital Industry Data Institute.

Town Hall Attendees Notes & Feedback

[VVV Research & Development INC]

**Cass County MO Community CHNA TOWN HALL Roundtable Meeting Date TUES 12/17/13 Suggested
Community members & organizations when forming a CHNA collaborative work group.**

Cat	Attend 12/17	Firstname	Lastname	Organization	Address	City	ST	Zip
Clergy	1	Brenda	Buford	Beautiful Savior Lutheran Home	1003 S Cedar	Belton	MO	64012
Business	1	Bill	Gray	Hawthorn Bank	8127 E 171st Street	Belton	MO	64012
Hosp	1	Todd	Krass	Belton Regional Medical Center	17065 S 71 Highway	Belton	MO	64012
Gov	1	Chris	Molendorp	State Representative	8200 E 161st Street	Belton	MO	64012
Dental	1	Katie	Schroeder	Cass County Dental Clinic	802 E walnut	Belton	MO	64012
Schools	1	Andrew	Underwood	Belton School District #124	110 W Walnut Street	Belton	MO	64012
Comm	1	Sharon	West		3500 E 185th Street	Belton	MO	64012
Gov	1	Dick	Scharfen	Mayor, City of Lake Winnebago	4 Mohave Drive	Lake Winnebago	MO	64034
Schools	1	Lisa	Hatfield	Raymore-Peculiar Schools	21005 School Road	Peculiar	MO	64078
Schools	1	Nicole	Osbourne	Raymore-Peculiar Schools	21005 School Road	Peculiar	MO	64078
Comm	1	Holly	Stark		9202 E State Rte YY	Peculiar	MO	64078
Business	1	Robert	White	Money Concepts	30109 E 222nd Court	Pleasant Hill	MO	64080
Chiropractor	1	David	Leonard	Heritage Chiropractic & Wellness	103 S Jefferson	Raymore	MO	64083
Untited Way	1	Gloria	Fondren	United Way of Greater Kansas City	1080 Washington	Kansas City	MO	64105
Comm	1	Bill	Day	Community Member		Harrisonville	MO	64701
Comm	1	Verda	Day	Community Member		Harrisonville	MO	64701
Senior	1	Dana	Ditch	Hope Haven	PO Box 754	Harrisonville	MO	64701
Gov	1	Wendy	Hersherger	Parks & Recreation	PO Box 367	Harrisonville	MO	64701
Gov	1	Kim	Hubbard	City of Harrisonville	300 E Pearl Street	Harrisonville	MO	64701
P HLTH	1	Tiffany	Klassen, MPH	Cass County Health Department	300 S Main Street	Harrisonville	MO	64701
Underserved	1	Melinda	Lacy	CRMC-Discharge	2800 E Rock Haven Rd	Harrisonville	MO	64701
Hosp	1	Chris	Lang	Cass Regional Medical Center	2800 E Rock Haven Rd	Harrisonville	MO	64701
Gov	1	Meryl	Lange	Associate Circuit Judge	2501 W Mechanic St	Harrisonville	MO	64701
Senior	1	Martha	Mauren	Beautiful Savior Lutheran Home		Harrisonville	MO	64701
Ed	1	Susan	Mills-Gray	University of Missouri Extension	201 W Wall Street	Harrisonville	MO	64701
Comm	1	Alice	Molendorp	Community Member		Harrisonville	MO	64701
Comm	1	Gene	Molendorp	Community Member		Harrisonville	MO	64701
Gov	1	Bev	Newman	Chief Juvenile Officer	2501 West Wall St	Harrisonville	MO	64701
Gov	1	Tracie	Oliver	Parks & Recreation	PO Box 367	Harrisonville	MO	64701
Comm	1	Maggie	Oliver	Community Member		Harrisonville	MO	64701
Senior	1	Jane	Prier	Crown Care Center	3001 E Elm	Harrisonville	MO	64701
Business	1	Laurence	Smith	Reece & Nichols	905 N Commercial	Harrisonville	MO	64701
Senior	1	Linda	Tesser	Hope Haven	PO Box 754	Harrisonville	MO	64701
Board	1	Carole	Arnold	CRMC Board of Trustees	20404 E State Rte A	Archie	MO	64725
Comm	1	Carol	Welborn		1509 E State Rte A	Drexel	MO	64742
Comm	1	Jim	Welborn		1509 E State Rte A	Drexel	MO	64742
Law	1	Thomas	Alber	Chief of Police	PO Box 20	Garden City	MO	64747

Cass County CHNA Town Hall Notes

December 16, 2013

Harrisonville Community Center

In Attendance: N=36

- About 3-4 business owners
- About 2-3 elected officials
- About 4-5 health care providers
- About 2 clergy members
- About 2 veterans
- Vince Vandelaar lead meeting.

RWJ National Health Rankings – Cass County MO

- Better rankings due to metro being so close
- County is split between rural areas and Belton/Harrisonville
- Proximity to the metro skews numbers
- There is some disparity over what accessibility means – is a 20-minute drive acceptable? Is a 40-minute drive acceptable?

Secondary Research review with community:

1. Demographic Profile

- Spanish and Vietnamese languages are two prevalent non-English languages spoken
- Unemployment may be lower than listed – 8.3%

2. Economic/Business Profile

3. Education

- Free lunch percent is about right – school districts with higher are Sherwood, East Linn, Archie, Drexel, some public Belton schools i.e. Scott Elementary

4. Maternal-Infant Health

5. Hospitalization/Providers

- Closeness to Jackson County, MO and Johnson County, KS messing up data – physicians living in counties practicing in Cass
- NP and PA not included in number

6. Behavioral Health

- Private care data not reported

7. Risk Indicators

- Water doesn't taste good

8. Uninsured

- Uninsured rate looks accurate

9. Mortality

10. Preventative Measures

Cass County CHNA Town Hall Notes

December 16, 2013

Harrisonville Community Center

Primary Data N=170, survey in progress – Close date 2/21/14

North Cass- Walgreens and CVS care clinics & pharmacies in serve.

Roundtable discussions conducted – reported strengths/areas of improvement.

For a rural Cass community, there's pretty good access to providers – not agreed on by everyone however.

Cass County, MO - Community Health "Strengths" N=36			
#	Topic	#	Topic
1	Access to services and providers	12	Low teen birth rate
2	Adequate housing	13	People are willing to help each other out
3	Better outcomes than other rural areas	14	People in Cass Co are involved in health care and want to see changes
4	Free dental clinic in Belton	15	Private funding for health care initiatives
5	Good Pharmacies, Rural clinics, Dentists, Chiropractors & Opitcal Care	16	Proximity to KC metro area
6	Good physical environment water/air	17	Quality health care providers
7	Great Highway access - Interstate 71	18	Recreational opportunities - wellness, pools, trails
8	High income and employment level	19	Strong education/schools- embrace health
9	High quality water and air	20	Strong hospitals and health department working relations
10	High school graduation rates	21	Surrounding county health partnerships ie Jackson MO & Johnson KS
11	Improving health care facilities (new)	22	Well-staffed, strong school health programs- social workers and counselors

Town Hall ended at 7:05 pm. VVV thanked all participants.

Cass County MO

Town Hall Community Health Needs Priorities (36 Attendees)

#	Health NEEDS (TOPICS)	Votes	%	Accum
1	Lack of mental health providers & placement of patients	28	21.4%	21.4%
2	Obesity Rates - Need for Nutrition & Fitness	20	15.3%	36.6%
3	Transportation for health care	17	13.0%	49.6%
4	Drug Prevention resources	15	11.5%	61.1%
5	Access for dental treatment for uninsured/Medicaid	13	9.9%	71.0%
6	Limited local Health Department funding	7	5.3%	76.3%
7	Desire for Urgent Care	6	4.6%	80.9%
8	Add Ambulance services for Cass Co rural areas, SW, far East & far West	5	3.8%	84.7%
9	Assisted Living Options for rural Cass County	5	3.8%	88.5%
10	Prenatal health care, prenatal wellness (drink, smoke, drugs)	5	3.8%	92.4%
11	Well child screenings	3	2.3%	94.7%
12	Information/communications for senior services	2	1.5%	96.2%
13	Recruit More primary care providers	2	1.5%	97.7%
14	Specialized care closer to home (15-20 mins): OBGYN, Peds, Pulmonologists, Neurology, Geriatrics, Endocrinologist	2	1.5%	99.2%
15	Ambulances aren't equipped to deal with larger patients	1	0.8%	100.0%
TOTALS		131	100%	

Community Health Needs Assessment

Cass County MO - Strengths (Color cards) N=36

CODE1	CODE2	CODE3	Today: What are the strengths of our community that contribute to health ?
ACC			Access to services and providers
AIR	H2O		Physical environment
CHIR			Chiropractic care
DENT			Free dental clinic in Belton
DOCS			Current health care providers are good quality
DOCS			Existing health care providers are of good quality
ECON			Good wages/income levels
ECON			High income and employment level
EMRM			ER Services
EYE			Optical care
FAC			Health care facilities and services improving
FAC			Improvement in health care facilities
FINA			Private funding for health care initiatives
H2O	AIR		High quality water and air
H2O	AIR		Quality water and air
HOSP	DOH		Strong hospital and health department
HOSP			Two hospitals
IP			Inpatient Services
OTHR			Adequate housing
OTHR			Better outcomes than other rural areas
OTHR			Extended family health
OTHR			High school graduation rates
OTHR			Highway access
OTHR			Interstate runs through middle of county
OTHR			Lion's Club (vision/hearing screen)
OTHR			People are willing to help each other out
OTHR			People in Cass County are involved in health care and want to see changes
OTHR			Proximity to KC metro area
OTHR			Rural clinics
OTHR			Strong education/schools
OTHR			Surrounding county health partnerships
OTHR			Well-staffed, strong school health programs
PHAR			Pharmacy availability
PRIM	DENT	CHIR	PCP, Dentist, Chiro
REC			Recreational opportunities - wellness, pools, trails
SNUR			School social workers and counselors
TPRG			Low teen birth rate
WELL	SNUR		School education on health

**Community Health Needs Assessment - 2013
Cass County MO - Weakness (White cards) N=36**

CODE1	CODE2	CODE3	Today: What are the weaknesses of our community that contribute to health ?
ACC			Access for veterans for health care
ACC	WAIT	URG	Accessibility - longer hours, more clinics to reduce wait times
ACC			Health care delivery systems to rural areas
AGE	HH		Aging-in-place home health delivery services
AGE	NH		Assisted living options for rural Cass
AGE			Information/communications for senior services
AMB			Ambulance service level
AMB			Ambulance services for more-rural areas, Southwest Cass, far East Cass, West
AMB			Ambulances aren't equipped to deal with larger patients
BH			Better mental health service providers
BH			Digital safety, bullying - youth mental health
BH			Lack of mental health providers, placement
BH			Support CASCO for behavioral/handicapped services
CHRON			Chronic disease management
COMM			Rural telephone service for emergencies
DENT	INSU		Access for dental treatment for uninsured/Medicaid
DENT			Lack of dentists outside Belton and Raymore
DIAB			Diabetes education/prevention
DOCS	INSU		More Medicare/Medicaid providers
DOCS			More physicians
DOH			Health department funding
DRUG			Drug use and prevention resources
EMRM			ER rates
FAM			Family planning services
INSU			Reduce charity care/bad debt
NH			Nursing homes
NUTR	WELL		Nutrition/diet education
OBES	NUTR	FIT	Obesity - Nutrition/Fitness, good food access
OBES	WELL		Obesity education
OTHR			Add clinic locations as population grows
OTHR			Lower cost locally versus delivery in SM KS and KC
OTHR			Lower hospital costs - inpatient/ER
PNEO	WELL		Prenatal health care, prenatal wellness (drink, smoke, drugs)
PRIM			More primary care providers
SCRN	OTHR		Increase preventive screening rates/data tracking
SCRN			Rural school health screenings
SMOK			Tobacco cessation education

**Community Health Needs Assessment - 2013
Cass County MO - Weakness (White cards) N=36**

CODE1	CODE2	CODE3	Today: What are the weaknesses of our community that contribute to health ?
SMOK			Tobacco use prevention in teens (girls)
SNUR	WELL		Health education in schools
SPEC			Specialized care closer to home (15-20 mins): OBGYN, Peds, Pulmonologists, Neurology, Geriatrics, Endocrinologist
STD			STD education
SUIC			Suicide prevention
TPRG			Teen pregnancy prevention/education
TRAN			Transportation for health care
URG			Urgent care
VIO			Child abuse
VIO			Violence reduction
WELL			Education on healthy living habits
WELL			Well child screenings

Public Notice & Invitation

[VVV Research & Development INC]



ConnectCass announces unique partnership with Cass Regional Medical Center to assess community health needs

Date: November 26, 2013

For Immediate Release

Contact: Chris Molendorp 816-804-9870

ConnectCass, a 501(c) 3 organization dedicated to the health and wellness of all Cass Countians, is pleased to announce a unique partnership with Cass Regional Medical Center to conduct a Community Health Needs Assessment (CHNA). Results of this assessment will provide guidance to address current and future Cass County health care needs, as well as fulfill mandates required by The Patient Protection and Affordable Care Act of 2010(PPACA).

ConnectCass is also pleased to announce Vince Vandelaar, MBA from VVV Research & Development INC, an independent health research and consulting firm from Olathe, Kansas, has been retained to conduct this assessment. Vandelaar is a veteran health care consultant who has conducted 43 similar assessments around the United States. Vandelaar will lead the community discussions as well as prepare this comprehensive report.

To gather the necessary community health information, a comprehensive paper / online survey has been created. In mid-January 2014, 3000 randomly selected Cass County residents will be mailed a paper survey. However, any Cass County resident may take the survey now by logging onto: https://www.surveymonkey.com/s/CHNA_CASS

Additionally, a Town Hall meeting will be held on Tuesday evening December 17th at the Harrisonville Community Center, 2400 Jefferson Parkway, Harrisonville MO. The public forum will begin at 5:30 and end at 7pm to allow participants to share and discuss community health needs, priorities and the steps needed to improve community health. **All Cass County residents and business leaders are encouraged to attend this event. A chilli supper will provided for all participants free of charge by Kurzweil's Country Meats, Garden City.**

For further information about this assessment, please call Chris Molendorp, Executive Director ConnectCass at (816) 804-9870 or chrismolendorp@connectcass.org.

END



Post Office Box 984
Harrisonville, MO 64701

December 3, 2013

Dear Community Member,

ConnectCass and Cass Regional Medical Center are partnering to perform a Community Health Needs Assessment. Our goal is to gather input from people throughout Cass County regarding their perceptions of the current state of our population's health and what they believe are the most important health needs that our communities need to address.

We are inviting you to attend a Cass County Town Hall meeting at which we will conduct roundtable discussion, review basic Community Health Needs Assessment information and rank our priorities. We have retained the services Vince Vandehaar of VVV Research and Development, Inc. from Olathe, KS, to facilitate this meeting and prepare our report.

Your input is valuable, and will be incorporated into our final report, which will be made available to the public.

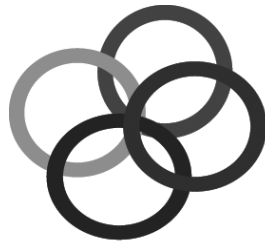
Please join us on Tuesday December 17th from 5:30-7:00 p.m. at The Harrisonville Community Center, 2400 Jefferson Parkway, Harrisonville MO. A light chili supper, provided Kurzweil's Country Meats will be served.

We look forward to seeing you at the Town Hall meeting, and appreciate your input.

Sincerely,

Chris Molendorp
Executive Director, ConnectCass

Chris Lang
CEO, Cass Regional Medical Center



ConnectCASS

Connecting people to enhance the whole health of Cass County

**Community Health Needs Assessment
Cass County Town Hall Meeting**

ConnectCASS will be sponsoring a Town Hall Meeting
Tuesday, December 17, 2013, 5:30 to 7:00 p.m.,
at the Harrisonville Community Center.

The public is invited to attend.
A Chili dinner will be provided.

Please join us for this opportunity to share your opinions and
suggestions to improve health care delivery in Cass County MO.

Please RSVP to 816-804-9870
Thank you in advance for your participation

From: Chris Molendorp <Chris.Molendorp@house.mo.gov>
Date: December 12, 2013 at 11:13:28 AM CST
Subject: Capitol Report - Community Health Needs Survey

Capitol Report – December 12, 2013

COMMUNITY HEALTH NEEDS SURVEY

Dear Cass County Constituents:

I would be grateful if you would take a moment to complete an online survey that will assess the health and wellness in our Cass County community. Several healthcare related groups from our area are currently collecting health and wellness data. It would be great if you could help by completing this survey.

Please click on this link:

https://www.surveymonkey.com/s/CHNA_CASS

Thank you for allowing me the opportunity to serve you.

Representative Chris Molendorp

Proudly Serving the 56th District
Missouri House of Representatives
[573.751.2175](tel:573.751.2175)

Detail Primary Research Primary Service Area

[VVV Research & Development INC]



January 2014

Dear Area Resident:

Over the next six weeks ConnectCASS will be partnering with area providers and the Cass County Health Department to conduct a community health needs assessment (CHNA). ConnectCASS is a 501(c)(3) non-profit organization with a mission to provide leadership to enhance the whole health of every person in Cass County.

In order to gather this information, a confidential survey has been developed (for research purposes only) by VVV Research & Development INC, an Olathe KS area based market research consulting firm and approved by ConnectCASS leadership.

We value your input and ask that you take the time to complete the enclosed survey.

Note: If you prefer to fill out a survey online, please enter the following address into your browser: https://www.surveymonkey.com/s/CHNA_CASS

Thank you in advance for your feedback. All surveys must be returned by **Friday, February 21st 2014.**

Sincerely,

Chris Molendorp
Executive Director
ConnectCASS

<http://www.connectcass.org>

Community Health Needs Assessment - Cass County MO

ConnectCass is conducting a comprehensive community health needs assessment. All survey responses will be tabulated and shared with Cass County healthcare providers, in order to better serve the health needs of our county residents.

Please take time to provide us your input by completing this confidential survey today. Completed surveys must be received by Friday February 21st, 2014. *NOTE:* If you prefer, you can complete this same survey online by typing the following link into your browser: https://www.surveymonkey.com/s/CHNA_CASS

Part I: HEALTHCARE PERCEPTIONS & SATISFACTION

1. In general, how would you rate the overall quality of the healthcare delivered to your community?

	Very Good	Good	Fair	Poor	Very Poor
OVERALL Quality of Care	<input type="radio"/>	<input type="radio"/>	<input type="radio"/>	<input type="radio"/>	<input type="radio"/>

2. How satisfied are you with each of the following: (Check one box per row)

	Very Good	Good	Fair	Poor	Very Poor	N/A
a) Ambulance Service	<input type="radio"/>	<input type="radio"/>	<input type="radio"/>	<input type="radio"/>	<input type="radio"/>	<input type="radio"/>
b) Child Care	<input type="radio"/>	<input type="radio"/>	<input type="radio"/>	<input type="radio"/>	<input type="radio"/>	<input type="radio"/>
c) Chiropractor	<input type="radio"/>	<input type="radio"/>	<input type="radio"/>	<input type="radio"/>	<input type="radio"/>	<input type="radio"/>
d) Dentists	<input type="radio"/>	<input type="radio"/>	<input type="radio"/>	<input type="radio"/>	<input type="radio"/>	<input type="radio"/>
e) Emergency Room	<input type="radio"/>	<input type="radio"/>	<input type="radio"/>	<input type="radio"/>	<input type="radio"/>	<input type="radio"/>
f) Eye Doctor / Optometrist	<input type="radio"/>	<input type="radio"/>	<input type="radio"/>	<input type="radio"/>	<input type="radio"/>	<input type="radio"/>
g) Family Planning Services	<input type="radio"/>	<input type="radio"/>	<input type="radio"/>	<input type="radio"/>	<input type="radio"/>	<input type="radio"/>
h) Home Health	<input type="radio"/>	<input type="radio"/>	<input type="radio"/>	<input type="radio"/>	<input type="radio"/>	<input type="radio"/>
i) Hospice	<input type="radio"/>	<input type="radio"/>	<input type="radio"/>	<input type="radio"/>	<input type="radio"/>	<input type="radio"/>
j) Inpatient Services	<input type="radio"/>	<input type="radio"/>	<input type="radio"/>	<input type="radio"/>	<input type="radio"/>	<input type="radio"/>
k) Mental Health Services	<input type="radio"/>	<input type="radio"/>	<input type="radio"/>	<input type="radio"/>	<input type="radio"/>	<input type="radio"/>
l) Nursing Home	<input type="radio"/>	<input type="radio"/>	<input type="radio"/>	<input type="radio"/>	<input type="radio"/>	<input type="radio"/>
m) Outpatient Services	<input type="radio"/>	<input type="radio"/>	<input type="radio"/>	<input type="radio"/>	<input type="radio"/>	<input type="radio"/>
n) Pharmacy	<input type="radio"/>	<input type="radio"/>	<input type="radio"/>	<input type="radio"/>	<input type="radio"/>	<input type="radio"/>
o) Primary Care	<input type="radio"/>	<input type="radio"/>	<input type="radio"/>	<input type="radio"/>	<input type="radio"/>	<input type="radio"/>
p) Public Health Department	<input type="radio"/>	<input type="radio"/>	<input type="radio"/>	<input type="radio"/>	<input type="radio"/>	<input type="radio"/>
q) School Nurse	<input type="radio"/>	<input type="radio"/>	<input type="radio"/>	<input type="radio"/>	<input type="radio"/>	<input type="radio"/>
r) Specialist Physician Care	<input type="radio"/>	<input type="radio"/>	<input type="radio"/>	<input type="radio"/>	<input type="radio"/>	<input type="radio"/>

Other (please specify)

3. Over the past 2 years, did you or your household receive health care services outside of your county?

Yes No

If yes, please specify the healthcare services you received

4. Are there healthcare services in your community / neighborhood that you feel need to be improved and / or changed? (Please be specific)

5. In your opinion, how much of a problem are the following causes of diseases or disability in your community? (Check one box per row)

	Not a Problem	Somewhat of a Problem	Major Problem	Don't Know
a) Cancer	<input type="radio"/>	<input type="radio"/>	<input type="radio"/>	<input type="radio"/>
b) Diabetes	<input type="radio"/>	<input type="radio"/>	<input type="radio"/>	<input type="radio"/>
c) Substance Abuse	<input type="radio"/>	<input type="radio"/>	<input type="radio"/>	<input type="radio"/>
d) Heart Disease	<input type="radio"/>	<input type="radio"/>	<input type="radio"/>	<input type="radio"/>
e) Sexual Transmitted Diseases	<input type="radio"/>	<input type="radio"/>	<input type="radio"/>	<input type="radio"/>
f) Mental Disorders	<input type="radio"/>	<input type="radio"/>	<input type="radio"/>	<input type="radio"/>
g) Obesity	<input type="radio"/>	<input type="radio"/>	<input type="radio"/>	<input type="radio"/>
h) Pneumonia / Flu	<input type="radio"/>	<input type="radio"/>	<input type="radio"/>	<input type="radio"/>
i) Respiratory Disease	<input type="radio"/>	<input type="radio"/>	<input type="radio"/>	<input type="radio"/>
j) Stroke	<input type="radio"/>	<input type="radio"/>	<input type="radio"/>	<input type="radio"/>
k) Suicide	<input type="radio"/>	<input type="radio"/>	<input type="radio"/>	<input type="radio"/>
l) Trauma	<input type="radio"/>	<input type="radio"/>	<input type="radio"/>	<input type="radio"/>

Other (please specify)

6. How well do you feel our local health care providers are doing in addressing the health needs of the following age groups? (Check one box per row)

	Very Good	Good	Fair	Poor	Very Poor	N/A
Infants	<input type="radio"/>	<input type="radio"/>	<input type="radio"/>	<input type="radio"/>	<input type="radio"/>	<input type="radio"/>
Age 1 - 12	<input type="radio"/>	<input type="radio"/>	<input type="radio"/>	<input type="radio"/>	<input type="radio"/>	<input type="radio"/>
Age 13 - 17	<input type="radio"/>	<input type="radio"/>	<input type="radio"/>	<input type="radio"/>	<input type="radio"/>	<input type="radio"/>
Age 18 - 44	<input type="radio"/>	<input type="radio"/>	<input type="radio"/>	<input type="radio"/>	<input type="radio"/>	<input type="radio"/>
Age 45 - 64	<input type="radio"/>	<input type="radio"/>	<input type="radio"/>	<input type="radio"/>	<input type="radio"/>	<input type="radio"/>
Age 65 - 84	<input type="radio"/>	<input type="radio"/>	<input type="radio"/>	<input type="radio"/>	<input type="radio"/>	<input type="radio"/>
Over 85	<input type="radio"/>	<input type="radio"/>	<input type="radio"/>	<input type="radio"/>	<input type="radio"/>	<input type="radio"/>

7. Does our region need any additional healthcare providers?

Yes No

If yes, please specify what is needed:

8. In your opinion, what areas need additional education or attention in our community? (Check all that apply)

- | | | |
|---|---|---|
| <input type="checkbox"/> a) Abuse / Violence | <input type="checkbox"/> i) Mental Illness | <input type="checkbox"/> q) Sexually Transmitted Diseases |
| <input type="checkbox"/> b) Aging (Dementia) | <input type="checkbox"/> j) Neglect | <input type="checkbox"/> r) Suicide |
| <input type="checkbox"/> c) Alcohol | <input type="checkbox"/> k) Nutrition | <input type="checkbox"/> s) Teen Pregnancy |
| <input type="checkbox"/> d) Alternative Medicine | <input type="checkbox"/> l) Obesity | <input type="checkbox"/> t) Tobacco Use |
| <input type="checkbox"/> e) Child Care | <input type="checkbox"/> m) Ozone | <input type="checkbox"/> u) Uninsured |
| <input type="checkbox"/> f) Chronic Diseases | <input type="checkbox"/> n) Pain Management | <input type="checkbox"/> v) Vaccinations |
| <input type="checkbox"/> g) Family Planning / Birth Control | <input type="checkbox"/> o) Poverty | <input type="checkbox"/> w) Water Quality |
| <input type="checkbox"/> h) Lead Exposure | <input type="checkbox"/> p) Preventative Healthcare | <input type="checkbox"/> x) Wellness Education |
| | | <input type="checkbox"/> y) Drugs / Substance Abuse |

Other (please specify below)

PART II: YOUR HEALTH PRACTICES

9. In general, how would you best describe your health? (Choose one)

- Very Good
 Good
 Fair
 Poor
 Very Poor

10. Compared to a year ago, how would you rate your overall health now?

- Much better than a year ago
 About the same
 Much worse than a year ago

11. Do you have a personal healthcare provider you use for primary care?

- Yes
 No

If Yes, please give Physician's name / Specialty / City

12. Have you had a physical in the past 12 months?

- Yes
 No

If no, why not? (Be specific)

13. Do you follow these health practices . . . ? (Check one box per row)

	Yes	No	N/A
If over 50, have you had a colonoscopy?	<input type="radio"/>	<input type="radio"/>	<input type="radio"/>
If male over 40, do you have annual prostate exams?	<input type="radio"/>	<input type="radio"/>	<input type="radio"/>
If female over 40, do you have annual mammograms?	<input type="radio"/>	<input type="radio"/>	<input type="radio"/>
If female, do you have a pap smear every other year?	<input type="radio"/>	<input type="radio"/>	<input type="radio"/>
Do you get 2.5 hours a week of moderately intense physical activity?	<input type="radio"/>	<input type="radio"/>	<input type="radio"/>

14. Please complete sentence below. Are you:

	Yes	No	N/A
a) Eating right (Daily5+servings-fruits/veg/wheat)	<input type="radio"/>	<input type="radio"/>	<input type="radio"/>
b) Using tobacco products weekly	<input type="radio"/>	<input type="radio"/>	<input type="radio"/>
c) Exercising 2-3 times weekly	<input type="radio"/>	<input type="radio"/>	<input type="radio"/>
d) Consuming alcohol (more than 1 drink daily)	<input type="radio"/>	<input type="radio"/>	<input type="radio"/>
e) Receiving an annual flu shot	<input type="radio"/>	<input type="radio"/>	<input type="radio"/>

Part III: A LITTLE MORE ABOUT YOU

15. What is your age?

- Under 18 18 - 44 45 - 64 65 - 74 Over 75

16. Your gender?

- Male Female

17. How would you identify yourself?

- a) Caucasian / White American d) American Indian / Native Alaskan
 b) African American / Black American e) Asian American / Pacific Islander
 c) Latino / Hispanic American f) Multicultural / Multiracial

Other (please specify)

18. How would you describe your household?

- Single Married with children no longer at home
 Married Divorced
 Married with children at home Other _____

19. Regarding your health insurance coverage, what type of health coverage is your primary plan? (Choose one)

- Private Insurance you purchased Covered by Employer (employer pays total cost)
 Medicare Covered by Employer (you & employer share cost)
 Medicaid No Coverage (Uninsured)

Other (please specify)

20. What is your home 5 digit zip code and County of residence?

Zip _____ County _____

Thank you. Please return completed survey with enclosed business reply envelope.

CHNA Report contact :



Vince Vandelaar, MBA
VVV Marketing & Development INC.
***Adjunct Professor / Professional Healthcare
Marketing & Strategic Planning Consulting
Services***

601 N Mahaffie, Olathe, KS 66061
(913) 302-7264 (C)
VVV@VandelaarMarketing.com

LinkedIn: vandelaar
Website: VandelaarMarketing.com