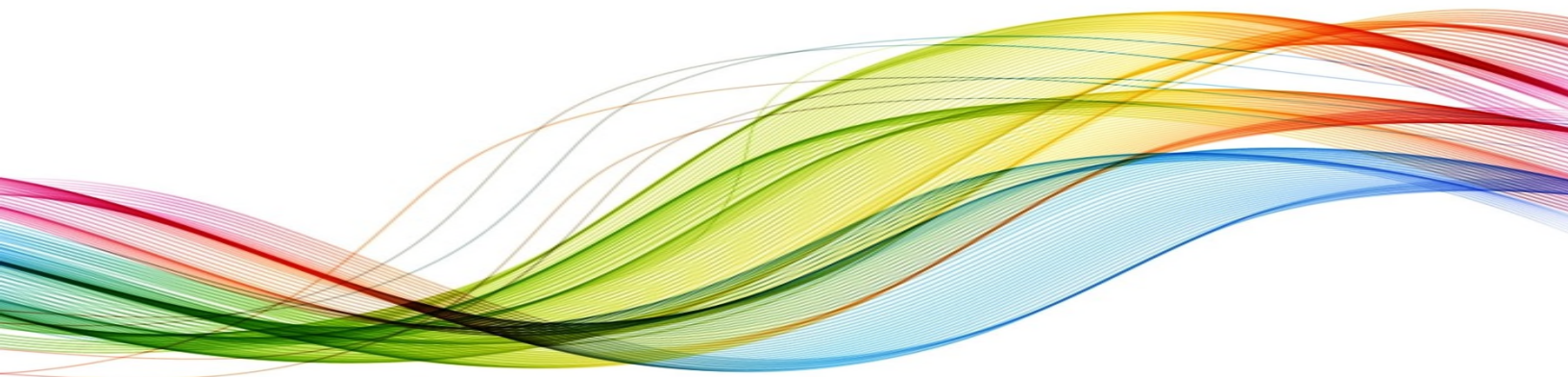




**Community Health Needs Assessment  
Cass Regional Medical Center  
Cass County, MO**

---



**November 2019**

**VVV Consultants LLC  
Olathe, KS**

# Community Health Needs Assessment

## Table of Contents

### **I. Executive Summary**

- a) County Health Area of Future Focus (A prioritized description of future community needs identified by community discussion)
- b) Town Hall CHNA Findings: Areas of Strengths and Areas to Change and/or Improve.

### **II. Methodology**

- a) CHNA Scope and Purpose
- b) Local Collaborating CHNA parties (The identity of any and all organizations with which the organization collaborated and third parties that engaged to assist with the CHNA)
- c) CHNA & Town Hall Research Process (A description of the process & methods used to conduct the CHNA, a description of how the organization considered the input of persons representing the community, and an explanation of the process/ criteria used in prioritizing)
- d) Community Profile (A description of the community served by the facility and how the community was determined)

### **III. Community Health Status**

- a) Historical Community Health Statistics- Secondary Data
- b) Online Research- Health Status

### **IV. Inventory of Existing County Health Resources**

- a) A description of the existing health care facilities and other resources within the community available to meet the needs identified through the CHNA

### **V. Detail Exhibits**

- a) Patient Origin & Access to Care
- b) Town Hall Attendees, Notes, & Feedback (Who attended with qualifications)
- c) Public CHNA Notice / News
- d) Primary Research Detail

# I. Executive Summary

---

[VVV Consultants LLC]

# I. Executive Summary

## Cass Regional Medical Center – Cass County, MO - 2019 Community Health Needs Assessment (CHNA) Wave #3

Creating healthy communities requires a high level of mutual understanding and collaboration among community leaders. The development of this assessment brings together community health leaders and providers, along with the residents, to research and prioritize county health needs and document community health delivery success. This health assessment will serve as the foundation for community health improvement efforts for the next three years.

Cass Regional Medical Center (CRMC) previous CHNA was completed in 2016. (Note: The Patient Protection and Affordable Care Act (ACA) require not-for-profit hospitals to conduct a CHNA every three years and adopt an implementation strategy to meet the needs identified by the CHNA). Wave #3 Cass County, MO CHNA assessment began March 2019 and was facilitated / created by VVV Consultants, LLC (Olathe, KS) staff under the direction of Vince Vandehaar, MBA.

**Important community CHNA Benefits** for both the local hospital and the health department, are as follows: 1) Increases knowledge of community health needs and resources 2) Creates common understanding of the priorities of the community’s health needs 3) Enhances relationships and mutual understanding between and among stakeholders 4) Provides a basis upon which community stakeholders can make decisions about how they can contribute to improving the health of the community 5) Provides rationale for current and potential funders to support efforts to improve the health of the community 6) Creates opportunities for collaboration in delivery of services to the community and 7) Provides guidance to the hospital and local health department for how they can align their services and community benefit programs to best meet needs, and 8) fulfills Hospital “Mission” to deliver quality health care.

### a) County Health Area of Future Focus

#### Cass County, MO: Town Hall - “Community Health Improvements Needs”

2019 CHNA Health Priorities				
Cass Regional Medical Center - Primary Service Area				
CHNA Wave #3 Town Hall - Sept 19, 2019				
Cass County, MO (31 Attendees, 120 Total Votes)				
#	Community Health Needs to Change and/or Improve	Votes	%	Accum
1	Mental Health (Diagnosis, Treatment, Aftercare)	21	17.5%	18%
2	Lack of Healthcare County-wide Coalition	16	13.3%	31%
3	Suicides (Adolescence-focused)	11	9.2%	40%
4	Awareness of Healthcare Services	10	8.3%	48%
5	Senior Care Staffing	10	8.3%	57%
6	Smoking (Vaping)	9	7.5%	64%
7	Domestic Violence	9	7.5%	72%
8	Poverty (Homelessness / Access to Dental Care)	9	7.5%	84%
<b>Total Votes:</b>		<b>120</b>	<b>100.0%</b>	
Other Items receiving votes: HC Transportation, STD, In-School Healthcare Clinics, Chronic Disease Management, Urgent Care, Women's Health / Family Planning, Primary Care, and Owning your own Health (Apathy).				

## b) Town Hall CHNA Findings: Areas of Strengths

### Cass County, MO: Town Hall - “Community Health Areas of Strengths”

Cass County, MO Community Health Strengths			
#	Topic	#	Topic
1	Adopted by St Louis County Prescription Drug Monitoring Program	7	Tobacco laws in Belton, Raymore and Peculiar
2	Cass Regional Medical Center	8	Ministerial Alliance
3	Community Centers	9	Population Growth
4	Dental Clinics	10	REACH Foundation
5	Food Bank	11	Rural Health Clinics
6	Hospice Care	12	Low Medicaid

### Key CHNA Wave#3 Secondary Research Conclusions are as follows:

**MISSOURI HEALTH RANKINGS:** According to the 2019 Robert Wood Johnson County Health Rankings, Cass County, MO Average was ranked 10<sup>th</sup> in Health Outcomes, 14<sup>th</sup> in Health Factors, and 106<sup>th</sup> in Physical Environmental Quality out of the 115 Counties.

**TAB 1.** Cass County’s population is 103,724 (based on 2017), with a population per square mile (based on 2010) of 143 persons. Six percent (6%) of the population is under the age of 5 and 16.5% is over 65 years old. Hispanic or Latinos make up 4.5% of the population and there are 3.8% of Cass County citizens that speak a language other than English at home. Children in single parent households make up 24% and 86.5% are living in the same house as one year ago. There are 8,298 Veterans living in Cass County.

**TAB 2.** The per capita income in Cass County is \$30,618, and 9.2% of the population is in poverty. There is a severe housing problem of 86% and an unemployment rate of 3.5%. Food insecurity is 11%, and limited access to a store (healthy foods) is 9%. There is a 49% long commute for those residing in Cass County, which is higher than the comparative norm.

**TAB 3.** Children eligible for a free or reduced-price lunch is at 37% and 92.4% of students graduate high school while 25.8% of students get their bachelor’s degree or higher in Cass County. There are 2 Head Start Programs in Cass County.

**TAB 4.** The percent of births where prenatal care started in the first trimester is 74.8%. Thirty-five percent (34.7%) of births in Cass County occur to unmarried women. Births where mothers have smoked during the pregnancy is at 13% and the percent of babies that were born prematurely is 9.3%. There are 80.4% of WIC infants ever breastfed in Cass County.

**TAB 5.** There is one primary care physician per 3,960 people in Cass County (based on population coverage per Cass County-officed MD or DO). Patients who gave their hospital a rating of 9 or 10 out of 10 are 73% and there are 73% of patients who reported Yes, They Would Definitely Recommend the Hospital. The average time patients spend in the emergency room is 37 minutes, which is lower than the comparative norm.

**TAB 6.** Medicare population getting treated for depression in Cass County is 17%. There are 4 days out of the year that are considered poor mental health days. The age-adjusted suicide mortality rate per 100,000 is 15.8 in Cass County.

**TAB 7.** Thirty-four percent (34%) of adults in Cass County are obese (based on 2019), with 26% of the population physically inactive. Eighteen percent (18%) of adults drink excessively and 18% smoke. The rate per 100,000 sexually transmitted diseases is higher than the comparative norm (322.8). Hypertension (53.4%), Hyperlipidemia (43.3%), Chronic Kidney Disease (17.6%), Atrial Fibrillation (9.6%) and Osteoporosis (5.2%) Risk for Medicare population are all higher than the comparative norm.

**TAB 8.** The adult uninsured rate for Cass County is 9%.

**TAB 9.** The life expectancy rate in Cass County is 76.4 for Males and 80.3 for Females. Alcohol-impaired driving deaths for Cass County is high, at 31%.

**TAB 10.** Seventy-one percent (71%) of Cass County has access to exercise opportunities and 43% monitor diabetes. Forty-five percent (45%) of women in Cass County get annual mammography screenings. Seventy-eight percent (77.9%) of Cass County citizens have an annual PCP checkup and 68.5% have an annual Dental checkup (based on 2016).

**Key 2019 Community Feedback Conclusions: Stakeholder feedback from residents, community leaders and providers (N=110) provided the following community insights via an online perception survey:**

- Using a Likert scale, 68.2% of Cass County stakeholders would rate the overall quality of healthcare delivery in their community as either Very Good or Good.
- Cass County stakeholders are satisfied with the following services: Ambulance Services, Chiropractors, Dentists, Hospice, Inpatient Services and Pharmacy.
- When considering past CHNA needs: Mental Health, Drugs, Urgent Care Services, Healthcare Transportation, Obesity, Suicides and Access to Dental Services for Uninsured came up.

CHNA Wave #3 - Year 2019		Cass County MO N=110			
Past CHNAs health needs identified		Ongoing Problem			Pressing
#	Topic	Votes	%	Trend	RANK
1	Mental Health Services	64.9%	50		1
2	Drugs	59.7%	46		2
3	Urgent Care Services	54.6%	42		3
4	Healthcare Transportation	49.4%	38		4
5	Obesity (Nutrition/ Exercise)	44.2%	34		5
6	Access to Dental Services for Uninsured	37.7%	29		7
7	Suicides	32.5%	25		6
8	Lack of local Health Department funding	23.4%	18		9
9	Access to Primary Care	19.5%	15		8

# II. Methodology

---

[VVV Consultants LLC]

## II. Methodology

### a) CHNA Scope and Purpose

The federal Patient Protection and Affordable Care Act (ACA) requires that each registered 501(c)3 hospital conduct a Community Health Needs Assessment (CHNA) at least once every three years and adopt a strategy to meet community health needs. Any hospital that has filed a 990 is required to conduct a CHNA. IRS Notice 2011-52 was released in late fall of 2011 to give notice and request comments.

#### **JOB #1: Meet/Report IRS 990 Required Documentation**

1. A description of the community served by the facility and how the community was determined;
2. A description of the process and methods used to conduct the CHNA;
3. The identity of any and all organizations with which the organization collaborated and third parties that it engaged to assist with the CHNA;
4. A description of how the organization considered the input of persons representing the community (e.g., through meetings, focus groups, interviews, etc.), who those persons are, and their qualifications;
5. A prioritized description of all of the community needs identified by the CHNA and an explanation of the process and criteria used in prioritizing such needs; and
6. A description of the existing health care facilities and other resources within the community available to meet the needs identified through the CHNA.

Section 501(r) provides that a CHNA must take into account input from persons who represent the broad interests of the community served by the hospital facility, including individuals with special knowledge of or expertise in public health. Under the Notice, the persons consulted must also include: Government agencies with current information relevant to the health needs of the community and representatives or members in the community who are medically underserved, low-income, minority populations, and populations with chronic disease needs. In addition, a hospital organization may seek input from other individuals and organizations located in or serving the hospital facility's defined community (e.g., health care consumer advocates, academic experts, private businesses, health insurance and managed care organizations, etc.).

#### **JOB #2: Making a CHNA Widely Available to the Public**

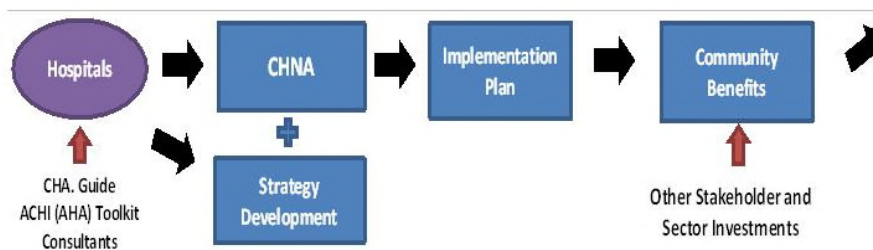
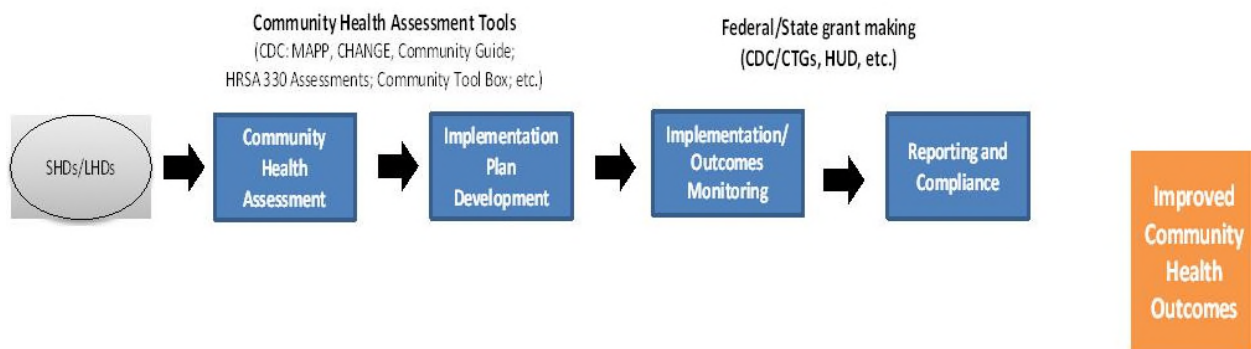
The Notice provides that a CHNA will be considered to be "conducted" in the taxable year that the written report of the CHNA findings is made widely available to the public. The Notice also indicates that the IRS intends to pattern its rules for **making a CHNA "widely available to the public"** after the rules currently in effect for Form 990. Accordingly, an organization would make a **facility's written report** widely available by posting the final report on its website either in the form of (1) the report itself, in a readily accessible format or (2) a link to another organization's website, along with instructions for accessing the report on that website. *The Notice clarifies that an organization must post the CHNA for each facility until the date on which its subsequent CHNA for that facility is posted.*



### **JOB #3: Adopt an Implementation Strategy by Hospital**

Section 501(r) requires a hospital organization to adopt an implementation strategy to meet the needs identified through each CHNA. The Notice defines an “implementation strategy” as a written plan that addresses each of the needs identified in a CHNA by either (1) describing how the facility plans to meet the health need or (2) identifying the health need as one that the facility does not intend to meet and explaining why the facility does not intend to meet it. A hospital organization may develop an implementation strategy in collaboration with other organizations, which must be identified in the implementation strategy. As with the CHNA, a hospital organization that operates multiple hospital facilities must have a separate written implementation strategy for each of its facilities.

Great emphasis has been given to work hand-in-hand with leaders from hospitals, the state health department and the local health department. A common approach has been adopted to create the CHNA, leading to aligned implementation plans and community reporting.



## **IRS Notice 2011-52 Overview**

### Notice and Request for Comments Regarding the Community Health Needs Assessment Requirements for Tax-exempt Hospitals

#### **Applicability of CHNA Requirements to “Hospital Organizations”**

The CHNA requirements apply to “hospital organizations,” which are defined in Section 501(r) to include (1) organizations that operate one or more state-licensed hospital facilities, and (2) any other organization that the Treasury Secretary determines is providing hospital care as its principal function or basis for exemption.

#### **How and When to Conduct a CHNA**

Under Section 501(r), a hospital organization is required to conduct a CHNA for each of its hospital facilities once every three taxable years. ***The CHNA must take into account input from persons representing the community served by the hospital facility and must be made widely available to the public. The CHNA requirements are effective for taxable years beginning after March 23, 2012.*** As a result, a hospital organization with a June 30 fiscal year end must conduct an initial CHNA for each of its hospital facilities by June 30, 2013, either during the fiscal year ending June 30, 2013 or during either of the two previous fiscal years.

#### **Determining the Community Served**

A CHNA must identify and assess the health needs of the **community served** by the hospital facility. Although the Notice suggests that geographic location should be the primary basis for defining the community served, it provides that the organization may also take into account the target populations served by the facility (e.g., children, women, or the aged) and/or the facility’s principal functions (e.g., specialty area or targeted disease). *A hospital organization, however, will not be permitted to define the community served in a way that would effectively circumvent the CHNA requirements (e.g., by excluding medically underserved populations, low-income persons, minority groups, or those with chronic disease needs).*

#### **Persons Representing the Community Served**

Section 501(r) provides that a CHNA must take into account input from **persons who represent the broad interests of the community** served by the hospital facility, including individuals with special knowledge of or expertise in public health. Under the Notice, the persons consulted must also include: (1) government agencies with current information relevant to the health needs of the community and (2) representatives or members of medically underserved, low-income, and minority populations, and populations with chronic disease needs, in the community. In addition, a hospital organization may seek input from other individuals and organizations located in or serving the hospital facility’s defined community (e.g., health care consumer advocates, academic experts, private businesses, health insurance and managed care organizations, etc).

## Required Documentation

The Notice provides that a hospital organization will be required to separately document the CHNA for each of its hospital facilities in a **written report** that includes the following information: 1) a description of the community served by the facility and how the community was determined; 2) a description of the process and methods used to conduct the CHNA; 3) the identity of any and all organizations with which the organization collaborated and third parties that it engaged to assist with the CHNA; 4) a description of how the organization considered the input of persons representing the community (e.g., through meetings, focus groups, interviews, etc.), who those persons are, and their qualifications; 5) a prioritized description of all of the community needs identified by the CHNA and an explanation of the process and criteria used in prioritizing such needs; and 6) a description of the existing health care facilities and other resources within the community available to meet the needs identified through the CHNA.

## Making a CHNA Widely Available to the Public

The Notice provides that a CHNA will be considered to be **“conducted”** in the taxable year that the written report of the CHNA findings is made **widely available to the public**. The Notice also indicates that the IRS intends to pattern its rules for making a CHNA “widely available to the public” after the rules currently in effect for Forms 990. *Accordingly, an organization would make a facility’s written report widely available by posting on its website either (1) the report itself, in a readily accessible format, or (2) a link to another organization’s website, along with instructions for accessing the report on that website. The Notice clarifies that an organization must post the CHNA for each facility until the date on which its subsequent CHNA for that facility is posted.*

## How and When to Adopt an Implementation Strategy

Section 501(r) requires a hospital organization to adopt an implementation strategy to meet the needs identified through each CHNA. **The Notice defines an “implementation strategy” as a written plan that addresses each of the needs identified in a CHNA by either (1) describing how the facility plans to meet the health need, or (2) identifying the health need as one that the facility does not intend to meet and explaining why the facility does not intend to meet it.** A hospital organization may develop an implementation strategy in collaboration with other organizations, which must be identified in the implementation strategy. As with the CHNA, a hospital organization that operates multiple hospital facilities must have a separate written implementation strategy for each of its facilities.

Under the Notice, an implementation strategy is considered to be “adopted” on the date the strategy is approved by the organization’s board of directors or by a committee of the board or other parties legally authorized by the board to act on its behalf. Further, the formal adoption of the implementation strategy must occur by the end of the same taxable year in which the written report of the CHNA findings was made available to the public. For hospital organizations with a June 30 fiscal year end, that effectively means that the organization must complete and appropriately post its first CHNA no later than its fiscal year ending June 30, 2013, and formally adopt a related implementation strategy by the end of the same tax year. *This final requirement may come as a surprise to many charitable hospitals, considering Section 501(r) contains no deadline for the adoption of the implementation strategy.*

# Public Health Criteria:

## **Domain 1: Conduct and disseminate assessments focused on population health status and public health issues facing the community.**

Domain 1 focuses on the assessment of the health of the population in the jurisdiction served by the health department. The domain includes: systematic monitoring of health status; collection, analysis, and dissemination of data; use of data to inform public health policies, processes, and interventions; and participation in a process for the development of a shared, comprehensive health assessment of the community.

### **DOMAIN 1 includes 4 STANDARDS:**

- **Standard 1.1** - Participate in or Conduct a Collaborative Process Resulting in a Comprehensive Community Health Assessment
- **Standard 1.2** - Collect and Maintain Reliable, Comparable, and Valid Data That Provide Information on Conditions of Public Health Importance and on the Health Status of the Population
- **Standard 1.3** - Analyze Public Health Data to Identify Trends in Health Problems, Environmental Public Health Hazards, and Social and Economic Factors That Affect the Public's Health
- **Standard 1.4** - Provide and Use the Results of Health Data Analysis to Develop Recommendations Regarding Public Health Policy, Processes, Programs, or Interventions

### **Required CHNA Planning Process Requirements:**

- a. Participation by a wide range of community partners.
- b. Data / information provided to participants in CHNA planning process.
- c. Evidence of community / stakeholder discussions to identify issues & themes. Community definition of a "healthy community" included along with list of issues.
- d. Community assets & resources identified.
- e. A description of CHNA process used to set priority health issues.

### **Seven Steps of Public Health Department Accreditation (PHAB):**

1. Pre-Application
2. Application
3. Document Selection and Submission
4. Site Visit
5. Accreditation Decision
6. Reports
7. Reaccreditation

## II. Methodology

### b) Collaborating CHNA Parties

Working together to improve community health takes collaboration. Listed below is an in-depth profile of the local hospital and health department CHNA partners:

#### **Cass Regional Medical Center Profile**

**280 Rock Haven Rd, Harrisonville, MO 64701**

**Phone: (816) 380-3474**

**CEO: J. Christopher Lang**

**About Our Hospital and Clinics:** Cass Regional Medical Center is a general, acute care facility located in Harrisonville, Missouri, that serves the residents of Cass County (population 100,000+) and the surrounding areas. As a critical access hospital, Cass Regional maintains a 21-bed medical/surgical unit, a four-bed intensive care unit and a 10-bed behavioral health unit.

In September 2009, Cass Regional Medical Center opened a new, 138,000-square-foot facility at 2800 East Rock Haven Road in Harrisonville. It replaced the former facility located at 1800 East Mechanic in Harrisonville, which housed the hospital for over 46 years.

Cass Regional offers state-of-the-art diagnostic equipment and a wide range of services. Our Specialists Clinic and the adjoining Rock Haven Medical Mall offer convenient access to some of the region's finest medical specialists. Our staff of dedicated employees works with our physicians to keep pace with the latest technology and works as a team to care for patients and their families. We maintain the prestigious accreditation of The Joint Commission.

Specialists in nearly 20 different areas treat patients on the Cass Regional campus in either the medical center or the adjoining Rock Haven Medical Mall, which is home to Cass Regional's Rock Haven Specialty Clinic, General Surgery Clinic; Ear, Nose and Throat Clinic and Cass Regional Orthopedics. The Wound Center at Rock Haven Specialty Clinic provides comprehensive treatment (including hyperbaric oxygen therapy) for chronic, slow-to-heal and serious wounds. Cass Regional also operates seven family practice clinics in the communities of Archie, Drexel, Garden City, Harrisonville, Kingsville, Peculiar and Pleasant Hill.

**HCA Midwest Health System:** While the hospital's board of trustees retains local governance and operating control, Cass Regional Medical Center is managed under contract by HCA Midwest Health. Since 2003, medical center administration and other valuable services have been provided through this arrangement.

HCA Midwest Health is a comprehensive health care system serving the Kansas City metropolitan area and the outlying region. How does HCA Midwest Health strengthen Cass Regional Medical Center? Like many businesses, health care can be provided more efficiently and cost-effectively when similar providers pool their resources. By working together, we have greater purchasing power and can provide our patients with a broader range of health care services.

**Our Mission:** Cass Regional Medical Center, a publicly owned health care organization, is committed to serving the communities of Cass County and the surrounding region with:

- compassionate;
- customer-focused; and
- professional health care services.

**Our Vision:** For every life we touch, Cass Regional Medical Center will be known for the passion of our people towards service excellence and our commitment to promoting wellness and expanding health care services for the communities we serve.

**Our Values:** At Cass Regional Medical Center, we believe in:

- **Family:** Our roots run deep in this region that we are proud to call home. We cherish our relationships with our families, friends and neighbors, and believe that every patient, visitor, volunteer, physician and employee is a member of Cass Regional's extended family. We join together as a team every day in both our hospital and our community-based clinics, where we share in each other's daily joys and struggles and are a source of encouragement and support for one another.
- **Stewardship:** We stand on the shoulders of many people who have worked hard to make us what we are today, and it is our privilege to preserve and grow the resources that have been entrusted to us so that future generations may also benefit. We believe that through wise stewardship of our resources – human, financial, and environmental – we are best equipped to accomplish our greater purpose, which is to promote wellness, ease suffering and heal the sick and injured.
- **Kindness:** We believe in the simple goodness of being nice to each other. We treasure the richness that our varied experiences, knowledge, skills and cultural backgrounds bring to our organization and our relationships with one another. We treat others as we want to be treated, and always try to see every situation from the other's perspective.
- **Respectfulness:** We believe that every person has worth and deserves to be treated with honesty, fairness and understanding. Everyone, no matter their role in the organization, takes time to listen and to care, and we uphold our integrity by keeping our word and making sure our actions match our intentions. We have pride in our conduct and in our professional appearance, and seek to build each other up through a spirit of camaraderie, mutual trust and friendship.
- **Dedication:** Delivering the highest quality care is of utmost importance, and we strive to consistently do our best for every patient, every time. We set high standards for ourselves, both in our personal and organizational codes of conduct. We can always be counted on to take pride and ownership in our work, and to lead by example, no matter the task.
- **Excellence:** We are committed to continual improvement, and embrace challenges with confidence and optimism. We believe that we are lifelong learners, and that new and better ways to support the delivery of health care can always be discovered. We are open to innovative ideas and solutions, and constantly pursue advanced knowledge and technology so that our patients receive the best care possible.

## General and Specialty Services

- Audiology
- Behavioral Health Unit (BHU)
- Cardiology (clinic and cardiac procedures include ECHO, Stress test, and Atrial Fibrillation)
- Cardiac Rehabilitation
- Case Management
- Dermatology
- Diabetes Education
- Ear, Nose and Throat Clinic
- Emergency Department
  - Level III Trauma Center
  - Acute Stroke Ready Hospital
  - Telemedicine Services (Psychiatric, Stroke and Neurology)
- Endocrinology
- Endoscopy
- Family Practice Clinics (7 Locations in Cass and Johnson Counties)
- Gastroenterology
- General Surgery Clinic
- Hematology
- Hospitalists Services
- Intensive Care Unit (ICU)
- Infusion Therapy
- Laboratory
- Medical Imaging (MRI, CT, Diagnostic, Mammography, Bone Density, Nuclear Medicine, Ultrasound – including ECHO and Vascular, and PET/CT)
- Medical / Surgical Unit
- Nephrology
- Neurology
- New Vision Drug & Alcohol Withdrawal Treatment
- Nutrition Counseling
- Obstetrics and Gynecology
- Oncology – Cancer Care
- Ophthalmology
- Orthopedics
- Pain Management
- Pharmacy
- Podiatry
- Pulmonary Rehabilitation
- Respiratory Services
- Sleep Lab
- Sports Medicine
- Surgical Services
- Therapy Services
  - Occupational Therapy
  - Physical Therapy (Lymphedema Therapy, Vestibular Rehabilitation Therapy, and Industrial Medicine)
  - Speech Therapy
- Urology
- Weight Management
- Wound Care

## **Cass County Health Department Profile**

**300 S Main St, Harrisonville, MO 64701**  
**Health Director: Amanda Prough**

### **About Us**

**Establishment and Growth:** The Cass County Health Department was established in 1938. Today, with 13 staff members, the Cass County Health Department serves a combined population of approximately 99,478 people. The Cass County Health Department, along with community and state partnerships, carry out the Three Core Public Health Functions and the 10 Essential Public Health Services.

**Mission:** To protect, promote and improve the health of all people in Cass County through integrated community efforts.

**Vision:** Empowering all people living in Cass County to live healthier lives.

### **Values:**

- **Collaboration:** We work collaboratively with our community partners, sharing knowledge and resources to enhance access to services and improve the health and well-being of all residents in Cass County.
- **Integrity:** We honor the public's trust and are committed to the highest standards of excellence, professional ethics and personal integrity in all that we do.
- **Diversity:** We value and respect diversity and recognize the benefits it brings in understanding and serving all people.
- **Empowerment:** Our organizational culture supports staff in their initiative to take actions that support our goals. We strive to be a high performance organization by promoting a culture of continuous improvement and foster employees that are competent, motivated, engaged and empowered.
- **Customer Centered:** Cass County Health Department staff will treat all customers with dignity and respect while being adaptive and flexible to listen, meet and exceed all the expectations of the community we serve.

### **What is Public Health?**

Public health encompasses a variety of functions and services that protect the health of the community and help citizens live longer, healthier, happier lives. This includes:

- Connecting citizens to community health services
- Developing policies to promote a healthy community
- Educating our community about public health issues
- Enforcing city ordinances
- Evaluating current community health programs
- Monitoring, identifying and investigating potential health threats
- Partnering with other community organizations to address local health issues



**Organization:** The Health Department is organized into seven divisions which carry out the 10 Essential Public Health Functions.

- Administration
- Communicable Disease Surveillance
- Environmental Health
- Nursing
- Emergency Preparedness Planning
- Women, Infants and Children – WIC
- Health Education

### **Programs and Services**

- Missouri Birth and Death Certificates
- Immunizations
- Food Handler Classes
- Women, Infants and Children – WIC
- Environmental Health
- Resource Directory
- Pregnancy Testing
- Tuberculosis (TB) Skin Testing
- Communicable Disease Surveillance
- Emergency Preparedness Planning
- Health Education
- Nursing

## II. Methodology

### b) Collaborating CHNA Parties Continued

#### Consultant Qualifications



#### VVV Consultants LLC

Company Profile: 601 N. Mahaffie, Olathe, KS 66061 (913) 302-7264

**Vince Vandehaar MBA, Principal Consultant & Adjunct** (913) 302-7264

[VVV@VandehaarMarketing.com](mailto:VVV@VandehaarMarketing.com)

Vince provides professional business consulting services to help healthcare organizations with business strategy, research and development. Specifically, Vince facilitates strategic planning, creates proven marketing plans/tactics, prepares IRS aligned community health needs assessments and conducts both qualitative and quantitative market research studies.

Vince started his consulting firm (VVV Consultants LLC) on 1/1/2009, after working for Saint Luke's Health System of Kansas City for 16 years. (Note: Saint Luke's Hospital of KC, SLHS's largest hospital, won the Malcolm Baldrige National Quality Award in March of 2003). Prior to his experience at Saint Luke's, Vince worked in the payor and insurance industry for Blue Cross and Blue Shield of Kansas City; Tillinghast, a Tower's Perrin Actuarial Consulting Firm; and Lutheran Mutual Life Insurance Company.

Vince also is an Adjunct Professor teaching BA, MBA & MHA classes part time 20% of his time at Avila, Rockhurst and/or Webster University (Strategic Planning, Marketing, MHA Capstone, Marketing Research, Sales & Social Media classes) and consults the remainder of his time.

Vince is a Malcolm Baldrige coach and a professional focus group moderator. He is actively involved in the national Society for Healthcare Strategy & Market Development (SHSMD), KHA/MHA Marketing Associations, KC Employee Benefit Professional Association, Healthcare Executives Kansas City, the American Marketing Association KC Chapter and is a SG2 advocate.

#### **Collaborating Support:**

Tessa Taylor BBA BA - VVV Consultants LLC

Lead Consultant

## II. Methodology

### c) CHNA and Town Hall Research Process

Wave #3 Community Health Needs Assessment (CHNA) process began in March 2019 for Cass Regional Medical Center (CRMC) to meet IRS CHNA requirements.

In March, a meeting was called by Cass Regional Medical Center (Cass County, MO) to review possible CHNA collaborative options, in collaboration with Cass County Health Department. Note: VVV Consultants LLC from Olathe, KS was asked to facilitate this discussion with the following agenda: VVV CHNA experience, review CHNA requirements (regulations) and discuss CHNA steps/options to meet IRS requirements and to discuss next steps. Outcomes from discussion led to Cass Regional requesting VVV Consultants LLC to complete a CHNA IRS aligned comprehensive report.

#### VVV CHNA Deliverables:

- Document Hospital Primary Service Area - meets the 80-20 Patient Origin Rule.
- Uncover / document basic secondary research county health data, organized by 10 tabs.
- Conduct / report CHNA Community Check-in Feedback Findings (primary research).
- Conduct a Town Hall meeting to discuss with community secondary & primary data findings leading to determining (prioritizing) county health needs.
- Prepare & publish CHNA report which meets ACA requirements.

To ensure proper PSA Town Hall representation (that meets the 80-20 Patient Origin Rule), a patient origin three-year summary was generated documenting patient draw by zips as seen below:

<b>CRMC Primary Service Area - Yr 2018-16</b>						
<b>TOTAL Patient Origin Counts by Zip</b>				<b>IP/OP/ER/CL</b>	<b>%</b>	<b>ACCUM</b>
<b>#</b>	<b>ZIP</b>	<b>City</b>	<b>County</b>	<b>215,181</b>	<b>100.0%</b>	
1	64701	Harrisonville, MO	CASS	<b>63,927</b>	<b>29.7%</b>	<b>29.7%</b>
2	64080	Pleasant Hill, MO	CASS	<b>22,414</b>	<b>10.4%</b>	<b>40.1%</b>
3	64747	Garden City, MO	CASS	<b>16,851</b>	<b>7.8%</b>	<b>48.0%</b>
4	64078	Peculiar, MO	CASS	<b>16,572</b>	<b>7.7%</b>	<b>55.7%</b>
5	64725	Archie, MO	CASS	<b>9,314</b>	<b>4.3%</b>	<b>60.0%</b>
6	64012	Belton, MO	CASS	<b>8,360</b>	<b>3.9%</b>	<b>63.9%</b>
7	64720	Adrian, MO	BATES	<b>7,646</b>	<b>3.6%</b>	<b>67.4%</b>
8	64083	Raymore, MO	CASS	<b>6,414</b>	<b>3.0%</b>	<b>70.4%</b>
9	64742	Drexel, MO	CASS	<b>5,831</b>	<b>2.7%</b>	<b>73.1%</b>
10	64746	Freeman, MO	CASS	<b>4,097</b>	<b>1.9%</b>	<b>75.0%</b>
11	64734	Cleveland	CASS	<b>2,577</b>	<b>1.2%</b>	<b>76.2%</b>
Source MHA / Internal Records						

Specific CHNA roles, responsibility and project timelines are documented by the following calendar.

## Cass Regional Medical Center 2019 CHNA Wave#3 Project Work Plan Cass County, MO - Timeline and Roles

Step	Date (Start-Finish)	Lead	Task
1	12/19/2018	Cass	Select CHNA Option C. Approve quote and signed by CEO
2	2/22/2019	VVV / Cass	Discussed upcoming CHNA work with Cass Regional Administration
3	3/27/2019	VVV	Present at Cass Regional Board meeting CHNA Overview.
4	by 7/1/2019	VVV	Send out REQ CommInvite Excel file. Hospital and health department to fill in PSA stakeholders names, addresses and e-mails.
5	by 8/1/2019	VVV	Request hospital client to send MHA PO Reports (see sample formats) to document service area for YR 16, 17 and 18. In addition, request hospital to complete three year historical PSA IP/OP/ER/Clinic patient origin file.
6	by 7/15/2019	VVV	Prepare CHNA Wave#3 stakeholder feedback online link. Send text link for hospital review.
7	On or before 7/15/2019	All	Prepare and send out PR story and Stakeholder email to local community members announcing upcoming CHNA work. Hospital to place PR locally.
8	On or before 8/2/2019	All	Launch and conduct online survey to stakeholders. Hospital will e-mail invite to participate to all stakeholders. Due by 9/11/2019.
9	On or before 8/1/2019	All	Prepare and send out PR story to local media CHNA survey announcing online CHNA Wave #3 feedback. Request public to participate.
10	On or before 8/30/2019	VVV	Assemble and complete secondary research. Find and populate 10 TABS to meet IRS Regs. Create Town Hall PowerPoint for presentation.
11	On or before 8/30/2019	VVV	Prepare community Town Hall invite letter and place local ad. VVV will mock up PR release to media sources.
12	On or before 9/1/2019	Cass	Send out PR story to local media announcing upcoming Town Hall.
13	On or before 9/18/2019	All	Conduct conference call ( <i>time TBD</i> ) with hospital and health department to review Town Hall data and flow.
14	Thursday, Sept 19th 5:30-7:00p.m.	VVV	Conduct CHNA Town Hall dinner at Cass Regional. Review & discuss basic health data / online PSA findings. Rank HC Needs.
15	On or before 10/31/2019	VVV	Complete analysis. Release draft one and seek feedback from leaders at hospital and health department.
16	On or before 10/31/2019	VVV	Produce and release final CHNA report. Hospital will post CHNA online.
17	On or before 11/15/2019	All	Implementation Plan creation session with community stakeholders. VVV will facilitate discussions.
18	30 days prior to end of hospital fiscal year	Cass	Hold board meeting to discuss CHNA needs, create and adopt an Implementation Plan. Communicate CHNA plan to community.

To meet IRS aligned CHNA requirements and meet Public Health accreditation criteria stated earlier, a four-phase methodology was followed:

**Phase I—Discovery:**

Conduct a 30-minute conference call with the CHNA county health department and hospital clients. Review / confirm CHNA calendar of events, explain / coach clients to complete required participant database and schedule / organize all Phase II activities.

**Phase II—Qualify Community Need:**

A) Conduct secondary research to uncover the following historical community health status for the primary service area. Use Missouri Hospital Association (MHA), Vital Statistics, Robert Wood Johnson Foundation: County Health Rankings, etc. to document current state of county health organized as follows:

<b>TAB 1. Demographic Profile</b>
<b>TAB 2. Economic/Business Profile</b>
<b>TAB 3. Educational Profile</b>
<b>TAB 4. Maternal and Infant Health Profile</b>
<b>TAB 5. Hospitalization / Providers Profile</b>
<b>TAB 6. Behavioral Health Profile</b>
<b>TAB 7. Risk Indicators &amp; Factors</b>
<b>TAB 8. Uninsured Profile</b>
<b>TAB 9. Mortality Profile</b>
<b>TAB 10. Preventative Quality Measures</b>

B) Gather primary research (stakeholder feedback) to uncover public health needs, practices and perceptions for primary service areas.

**Phase III—Quantify Community Need:**

Conduct a 90-minute town hall meeting with required community primary service area residents. At each town hall meeting, CHNA secondary data will be reviewed, facilitated group discussion will occur and a group ranking activity to determine the most important community health needs was administered.

**Phase IV—Complete Data Analysis and Create Comprehensive Community Health Needs Assessment:**

Post CHNA report findings to meet both PHAB and IRS CHNA criteria.

After consideration of CHNA stakeholders (sponsoring county health department and hospital), the CHNA Option C was selected with the following project schedule:

Phase I: Discovery.....	Mar 2019
Phase II: Secondary / Primary Research.....	Apr - Aug 2019
Phase III: Town Hall Meeting.....	Sept 19, 2019
Phase IV: Prepare / Release CHNA report.....	Oct - Nov 2019

Detail CHNA Development Steps Include:

<b>Development Steps to Create Comprehensive Community Health Needs Assessment</b>	
<b>Step # 1 Commitment</b>	<i>Determine interest level of area healthcare leaders (Hospital, Health Dept., Mental Health Centers, schools, churches, physicians etc.), prepare project quote.</i>
<b>Step # 2 Planning</b>	<i>Prepare brief CHNA Project Work Calendar - list goals, objectives, purpose, outcome, roles, community involvement, etc. Hold community kick-off meeting.</i>
<b>Step # 3 Secondary Research</b>	<i>Collect and report community health published facts. Gather data health practice data from published secondary research sources (i.e. census, county health records, behavioral risk factors surveillance, etc.)</i>
<b>Step # 4a Primary Research - Town Hall prep</b>	<i>Collect community opinions. (quantitative research). Gather stakeholders / community opinions regarding community health needs and healthcare practices.</i>
<b>Step # 4b Primary Research - Conduct Town Hall</b>	<i>Conduct "Conversation with Community" Town Hall (qualitative research). Review secondary &amp; primary data findings. Facilitate community conversation to build consensus; discuss opinions / identify health needs.</i>
<b>Steps # 5 Reporting</b>	<i>Prepare and present comprehensive CHNA report (to community leaders), facilitate development of CHNA Implementation Plan (actions to improve health). (Note: formal report will follow IRS Notice 2011-52 regs &amp; PHAB requirements.)</i>
VVV Consultants, LLC Olathe, KS (913) 302-7264	

## Overview of Town Hall Community Priority Setting Process

Each community has a wealth of expertise to be tapped for CHNA development. For this reason, a town hall is the perfect forum to gather community insight and provide an atmosphere to objectively consensus build and prioritize county health issues.

All Town Hall priority-setting and scoring processes involve the input of key stakeholders in attendance. Individuals and organizations attending the Town Halls were critically important to the success of the CHNA. The following list outlines partners invited to Town Hall: local hospital, public health community, mental health community, free clinics, community-based clinics, service providers, local residents, community leaders, opinion leaders, school leaders, business leaders, local government, faith-based organizations and persons (or organizations serving them), people with chronic conditions, uninsured community members, low income residents and minority groups.


Cass Regional Medical Center (Cass County, MO) town hall meeting was held on Thursday, September 19<sup>th</sup>, 2019 from 5:30 p.m. to 7:00 p.m. in the CRMC Main Conference Room (2800 Rock Haven Rd, Harrisonville, MO 64701). Vince Vandehaar facilitated this 1 ½ hour session with thirty-one (31) attendees. (Note: a detailed roster of Town Hall attendees is listed in Section V a).

The following Town Hall agenda was conducted:

1. Welcome & Introductions
2. Review Purpose for the CHNA Town Hall & Process Roles
3. Present / Review of Historical County Health Indicators (10 TABS)
4. Facilitate Town Hall participant discussion of data (probe health strengths / concerns). Reflect on size and seriousness of any health concerns cited and discuss current community health strengths.
5. Engage Town Hall participants to rank health needs (using 4 dots to cast votes on priority issues). Tally & rank top community health concerns cited.
6. Close meeting by reflecting on the health needs / community voting results. Inform participants on “next steps.”

At the end of each Town Hall session, VVV encouraged all community members to continue to contribute ideas to both hospital / health department leaders via e-mail or personal conversations. NOTE: To review detail Town Hall discussion content, please turn to Section V for detailed notes of session and activity card content reporting strengths & items to change or improve.

**Community Health Needs Assessment  
Town Hall Meeting – on behalf of  
Cass Regional Medical Center Medical Center  
Cass County, MO**



**Vince Vandehaar, MBA**  
**VVV Consultants LLC**  
Principal / Adjunct Full Professor

Olathe, Kansas 66061  
VVV@VandehaarMarketing.com  
913-302-7264

1

**Community Health Needs Assessment (CHNA)  
Town Hall Discussion Agenda**

- I. Opening / Introductions (10 mins)
- II. Review CHNA Purpose and Process (10 mins)
- III. Review Current County “Health Status”
  - Secondary Data by 10 TAB Categories
  - Review Community Feedback Research (35 mins)
- IV. Collect Community Health Perspectives
  - Hold Community Voting Activity
  - Determine Most Important Health Areas (30 mins)
- v. Close / Next Steps (5 mins)

2

**I. Introduction:**  
Background and Experience



**Vince Vandehaar, MBA**  
VVV Consultants LLC – Principal Consultant  
Olathe, KS 913 302-7264

- Professional Consulting Services: Strategic Planning, Marketing Management, Business Research & Development
- Focus: Strategy, Research, Deployment
- 30+ years of experience with Tillinghast, BCBSKC, Saint Luke’s

**Adjunct Full Professor - Marketing & MHA 31+ years**

- Avila University
- Webster University
- Rockhurst University



**Tessa Taylor, BBA BA – Lead Consultant**

- University of Wisconsin-Whitewater: AMA Chapter President (2 years)
- KAHCC Member
- AMAKC Healthcare SIG Co-Chair, Board Member

3

**Town Hall Participation (You)**

- ALL attendees welcome to share
  - Parking Lot
- There are no right or wrong answers
- Only one person speaks at a time
- Please give truthful responses
- Have a little fun along the way

4



### I. Introductions: A Conversation with the Community

*Community members and organizations invited to CHNA Town Hall*

**Consumers:** Uninsured/underinsured people, Members of at-risk populations, Parents, caregivers and other consumers of health care in the community, and Consumer advocates.

**Community leaders and groups:** The hospital organization's board members, Local clergy and congregational leaders, Presidents or chairs of civic or service clubs -- Chamber of Commerce, veterans' organizations, Lions, Rotary, etc., Representatives from businesses -- owners/CEO's of large businesses (local or large corporations with local branches.), Business people & merchants (e.g., who sell tobacco, alcohol, or other drugs), Representatives from organized labor, Political, appointed and elected officials, Foundations, United Way organizations. And other "community leaders."

**Public and other organizations:** Public health officials, Directors or staff of health and human service organizations, City/Community planners and development officials, Individuals with business and economic development experience, Welfare and social service agency staff, Housing advocates - administrators of housing programs: homeless shelters, low-income-family housing and senior housing, Education officials and staff - school superintendents, principals and teachers, Public safety officials, Staff from state and area agencies on aging, Law enforcement agencies - Chiefs of police, Local colleges and universities, Coalitions working on health or other issues.

**Other providers:** Physicians, Leaders in other not-for-profit health care organizations, such as hospitals, clinics, nursing homes and home-based and community-based services, Leaders from Catholic Charities and other faith-based service providers, Mental health providers, Oral health providers, Health insurers, Parish and congregational nursing programs, Other health professionals

5

### II. Review CHNA Definition

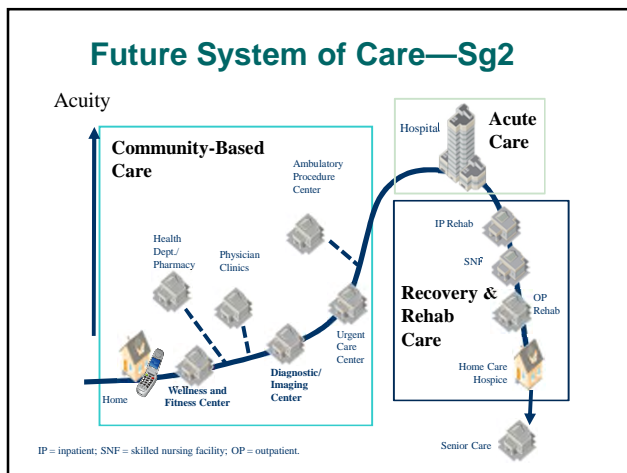
- A Community Health Needs Assessment (CHNA) is a **systematic collection, assembly, analysis, and dissemination of information about the health of the community.** (NOTE: Some the data has already been collected / published by Local, State and Federal public health organizations. Some data will be collected today.)
- A CHNA's role is to identify **factors** that affect the health of a population and **determine the availability of resources** to adequately address those factors.

6

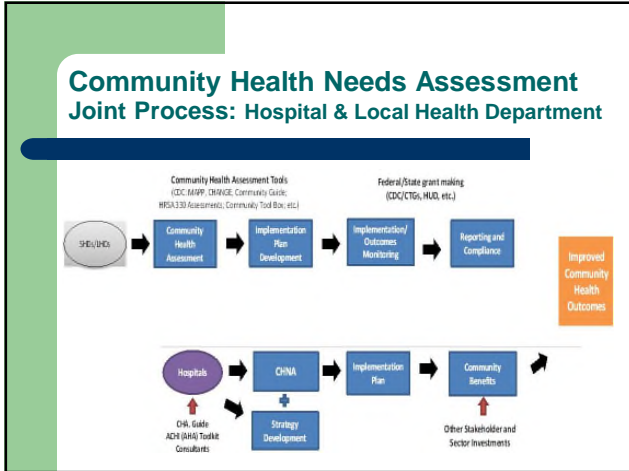
### Purpose—Why Conduct a CHNA?

- To determine health-related trends and issues of the community
- To understand / evaluate health delivery programs in place.
- To meet Federal requirements – both local hospital and health department
- To develop strategies to address unmet health needs (4-6 weeks after Town Hall)

7



8



9

### II. IRS Hospital CHNA Written Report Documentation

- a description of the community served
- a description of the CHNA process
- the identity of any and all organizations and third parties which collaborated to assist with the CHNA
- a description of how the organization considered the input of persons representing the community (e.g., through meetings, focus groups, interviews, etc.), who those persons are, and their qualifications
- a **prioritized description of all of the community needs identified by the CHNA** and
- a description of the existing health care facilities and other resources within the community available to meet the needs identified through the CHNA

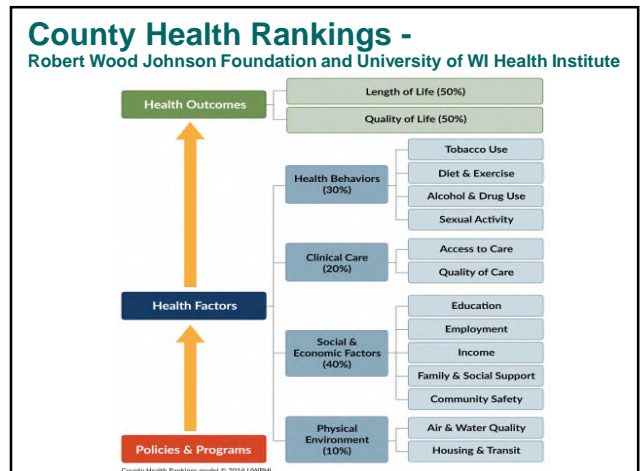
10

### III. Review Current County Health Status: Secondary Data by 10 Tab Categories & State Rankings

Trends: **Good** **Same** **Poor**

TAB 1. Demographic Profile
TAB 2. Economic/Business Profile
TAB 3. Educational Profile
TAB 4. Maternal and Infant Health Profile
TAB 5. Hospitalization / Providers Profile
TAB 6. Behavioral Health Profile
TAB 7. Risk Indicators & Factors
TAB 8. Uninsured Profile
TAB 9. Mortality Profile
TAB 10. Preventative Quality Measures

11



12

1	Physical Environment (10%)	2b	Social and Economic Environment (40%)
<b>Focus Area</b>	<b>Measure</b>	<b>Description</b>	<b>Focus Area</b>
<b>Air and water quality (5%)</b>	<b>Asbestos performance</b>	The average daily measure of fine particulate matter in micrograms per cubic meter (PM2.5) in a county	<b>Community safety (5%)</b>
	<b>Drinking water arsenic</b>	Percent of population potentially exposed to water exceeding a violation limit during the past year	<b>Violent crime</b>
	<b>Housing and transit (5%)</b>	Percent of households with at least 1 of 4 housing problems: overcrowding, high housing costs, or lack of kitchen or plumbing facilities	<b>Injury deaths</b>
		Percent of the workforce that drives alone to work	<b>Injury mortality</b>
		Percent of commuters who commute in their car alone, the percent that commutes more than 30 minutes	<b>per 100,000</b>
<b>2a</b>	<b>Clinical Care (20%)</b>		<b>3</b>
<b>Focus Area</b>	<b>Measure</b>	<b>Description</b>	<b>Health Outcomes (30%)</b>
<b>Access to care (10%)</b>	<b>Uninsured</b>	Percent of population under age 65 without health insurance	<b>Health Behaviors</b>
	<b>Primary care physicians</b>	Ratio of population to primary care physicians	<b>Tobacco use</b>
	<b>Dentists</b>	Ratio of population to dentists	<b>Adult smoking</b>
	<b>Mental health providers</b>	Ratio of population to mental health providers	<b>Diet and obesity</b>
<b>Quality of care (10%)</b>	<b>Preventable hospital stays</b>	Hospitalization rate for ambulatory care sensitive conditions per 1,000 Medicare enrollees	<b>Adult obesity</b>
	<b>Diabetic screening</b>	Percent of diabetic Medicare enrollees that receive diabetic screening	<b>Food environment index</b>
	<b>Mammography screening</b>	Percent of female Medicare enrollees that receive mammography screening	<b>Physical inactivity index</b>
<b>2b</b>	<b>Social and Economic Environment (40%)</b>		<b>Access to exercise opportunities</b>
<b>Focus Area</b>	<b>Measure</b>	<b>Description</b>	<b>Alcohol and drug use (5%)</b>
<b>Education (10%)</b>	<b>High school graduation</b>	Percent of ninth grade cohort that graduates in 4 years	<b>Excessive drinking</b>
	<b>Some college</b>	Percent of adults aged 25-44 years with some post-secondary education	<b>Alcohol-impaired driving deaths</b>
<b>Employment (10%)</b>	<b>Unemployment</b>	Percent of population age 16+ unemployed but seeking work	<b>Sexual activity (5%)</b>
<b>Income (10%)</b>	<b>Children in poverty</b>	Percent of children under age 18 in poverty	<b>Teen births</b>
<b>Family and social support (5%)</b>	<b>Inadequate social support</b>	Percent of adults without social/emotional support	<b>Teen births</b>
	<b>Children in single-parent households</b>	Percent of children that live in households headed by single parent	<b>Morbidity / Mortality</b>
			<b>2b / 3c</b>
			<b>Focus Area</b>
			<b>Measure</b>
			<b>Description</b>
<b>Quality of life (50%)</b>	<b>Poor or fair health</b>	Percent of adults reporting fair or poor health (age-adjusted)	
	<b>Poor physical health days</b>	Average number of physically unhealthy days reported in past 30 days (age-adjusted)	
	<b>Poor mental health days</b>	Average number of mentally unhealthy days reported in past 30 days (age-adjusted)	
	<b>Low birthweight</b>	Percent of live births with low birthweight (< 5,000 grams)	
	<b>Premature death</b>	Years of potential life lost before age 75 per 100,000 population (age-adjusted)	

13

## IV. Collect Community Health Perspectives

### Ask your opinion. Your thoughts?

- 1) **Today:** What are the *strengths* of our community that contribute to health? (White card)
- 2) **Today:** Are there healthcare services in your community / neighborhood that you feel *need to be improved and / or changed?* (Color card)
- 3) **Tomorrow:** What is occurring or might occur that would affect the "health of our community?"

14


## Have We Forgotten Anything?

<ul style="list-style-type: none"> <li>A. Aging Services</li> <li>B. Chronic Pain Management</li> <li>C. Dental Care/Oral Health</li> <li>D. Developmental Disabilities</li> <li>E. Domestic Violence,</li> <li>F. Early Detection &amp; Screening</li> <li>G. Environmental Health</li> <li>Q. Exercise</li> <li>H. Family Planning</li> <li>I. Food Safety</li> <li>J. Health Care Coverage</li> <li>K. Health Education</li> <li>L. Home Health</li> </ul>	<ul style="list-style-type: none"> <li>M. Hospice</li> <li>N. Hospital Services</li> <li>O. Maternal, Infant &amp; Child Health</li> <li>P. Nutrition</li> <li>R. Pharmacy Services</li> <li>S. Primary Health Care</li> <li>T. Public Health</li> <li>U. School Health</li> <li>V. Social Services</li> <li>W. Specialty Medical Care Clinics</li> <li>X. Substance Abuse</li> <li>Y. Transportation</li> <li>Z. Other _____</li> </ul>
---	--

15

## Community Health Needs Assessment

# Questions; Next Steps?



V&V Consultants LLC  
601 N Mahaffie  
Olathe, KS 66061

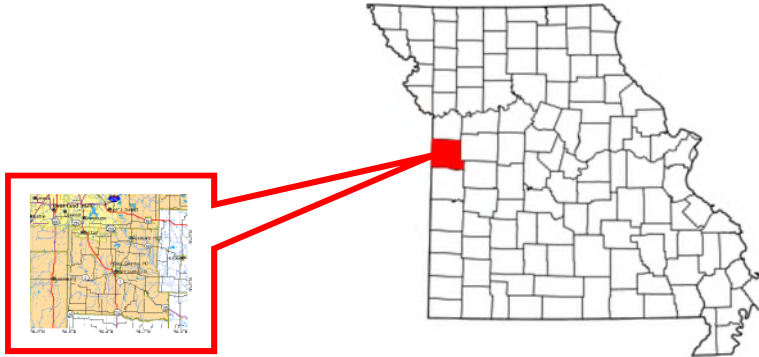
VVV@VandehaarMarketing.com  
(913) 302-7264

16

## II. Methodology

### d) Community Profile (A Description of Community Served)

#### Cass County, Missouri Community Profile



The population of Cass County was estimated to be 107,709 citizens in 2019 and a population density of 155 persons per square mile. Cass County's major cities are Archie, Baldwin Park, Belton, Cleveland, Creighton, Drexel, East Lynne, Freeman, Garden City, Gunn City, Harrisonville, Kansas City, Lake Annette, Lake Winnebago, Lees Summit, Loch Lloyd, Peculiar, Pleasant Hill, Raymore, Riverview Estates, Strasburg and West Line.

#### **Cass County (MO) Public Airports<sup>1</sup>**

Name	USGS Topo Map
Bishop's Landing	Freeman
Falcon Helipad	Raymore
Flying G Airport	Quick City
Hilltop Airport	Freeman
Inter-State Airport	Pleasant Hill
Lawrence Smith Memorial Airport	Austin
McDonnell Airport	Main City
Research Belton Hospital Heliport	Belton
Richters Airport	Harrisonville
Ridgeview Ranch Airport	Peculiar
Riordan Airport	Pleasant Hill
Robinson Airport	Belton
Veach Field	West Line
Williams Airport	West Line

<sup>1</sup> <https://missouri.hometownlocator.com/features/countyfeatures,scfips,29037,c,cass.cfm>

## Cass County (MO): Public Schools<sup>2</sup>

Name	Address	Phone	Levels
Archie High	302 W State Rte A Archie, MO 64725	816-293-5312	6-12
Belton High	801 W North Ave Belton, MO 64012	816-489-7500	9-12
Belton Middle	107 W Pirate Parkway Belton, MO 64012	816-348-1040	7-8
Bridle Ridge Intermediate	900 E 195th St Raymore, MO 64083	816-892-1700	5-6
Cambridge Elem	109 W Cambridge Belton, MO 64012	816-348-1008	K-4
Cass Co Elem	302 W State Rte A Archie, MO 64725	816-293-5312	PK-5
Creekmoor Elem	1501 Creekmoor Dr Raymore, MO 64083	816-892-1675	PK-4
Drexel Elem	207 S Fourth St Drexel, MO 64742	816-619-2468	PK-6
Drexel High	207 S Fourth St Drexel, MO 64742	816-619-2287	7-12
Eagle Glen Intermediate	100 S Foxridge Dr Raymore, MO 64083	816-892-1750	5-6
Early Childhood Center	500 Polar Ln Harrisonville, MO 64701	816-380-4421	PK-K
East Lynne Elem	24706 S State Rte K East Lynne, MO 64743	816-626-3511	PK-8
Gladden Elem	405 Westover Rd Belton, MO 64012	816-489-7530	K-4
Grace Early Child Ed Center	614 W Mill Belton, MO 64012	816-348-1514	PK
Harrisonville Elem	101 Meghan Dr Harrisonville, MO 64701	816-380-4131	1-3
Harrisonville High	1504 E Elm Harrisonville, MO 64701	816-380-3273	9-12
Harrisonville Middle	601 S Highland Harrisonville, MO 64701	816-380-7654	6-8
Hilcrest Steam Academy	106 S Hillcrest Rd Belton, MO 64012	816-348-1130	K-6
Kentucky Trail Elem	8301 E 163rd St Belton, MO 64012	816-348-1100	K-4
Mceowen Elem	1901 S Halsey Ave Harrisonville, MO 64701	816-380-4545	4-5
Midway Elem	5801 E State Rte 2 Cleveland, MO 64734	816-250-2994	K-6
Midway High	5801 E State Rte 2 Cleveland, MO 64734	816-250-2994	7-12
Mill Creek Upper Elem	308 S Cleveland Belton, MO 64012	816-348-1576	5-6
Peculiar Elem	201 E 3rd St Peculiar, MO 64078	816-892-1650	K-4
Pleasant Hill Elem	327 N McKissock Pleasant Hill, MO 64080	816-540-2220	3-4
Pleasant Hill High	1 Rooster Way Pleasant Hill, MO 64080	816-540-3111	9-12

<sup>2</sup> <https://missouri.hometownlocator.com/mo/cass/>

## Cass County (MO): Public Schools (Continued)

Name	Address	Phone	Levels
Pleasant Hill Intermediate	1204 E 163rd St Pleasant Hill, MO 64080	816-540-3156	5-6
Pleasant Hill Middle	1301 Myrtle Pleasant Hill, MO 64080	816-540-2149	7-8
Pleasant Hill Primary	304 Eklund St Pleasant Hill, MO 64080	816-540-2119	PK-2
Raymore Elem	500 S Madison Raymore, MO 64083	816-892-1925	PK-4
Raymore-Peculiar East Middle	175 E State Rte 58 Raymore, MO 64083	816-388-4000	7-8
Raymore-Peculiar Sr High	20801 School Rd Peculiar, MO 64078	816-892-1400	9-12
Scott Elem	310 S Scott Belton, MO 64012	816-489-7040	K-4
Sherwood Elem	33300 S Sherwood Dr Creighton, MO 64739	660-499-2202	PK-5
Sherwood High	33300 S Sherwood Dr Creighton, MO 64739	660-499-2239	9-12
Sherwood Middle	33300 S Sherwood Dr Creighton, MO 64739	660-499-2239	6-8
Shull Elem	11706 E 211th St Peculiar, MO 64078	816-892-1600	K-4
Stonegate Elem	900 S Foxridge Dr Raymore, MO 64083	816-892-1900	K-4
Strasburg Elem	600 E State Rte E Strasburg, MO 64090	816-680-3333	K-8
Timber Creek Elem	310 E Calico Dr Raymore, MO 64083	816-892-1950	K-4

## ERSI Demographics - Cass Co (MO)

ERSI Demographics - Cass Co (MO)										
Zip	Name	ST	County	Population			Households			Per Capita
				YR 2018	YR 2023	Chg.	YR 2018	YR 2023	Size	Inc 18
64012	Belton	MO	CASS	28,461	29,478	3.6%	10,801	11,209	3	\$28,272
64078	Peculiar	MO	CASS	9,178	9,568	4.2%	3,390	3,543	3	\$30,304
64080	Pleasant Hill	MO	CASS	13,951	14,664	5.1%	5,160	5,438	3	\$31,901
64083	Raymore	MO	CASS	23,292	24,762	6.3%	8,504	9,045	3	\$33,720
64090	Strasburg	MO	CASS	15	15	0.0%	6	7	3	\$35,418
64701	Harrisonville	MO	CASS	15,075	15,406	2.2%	5,735	5,874	3	\$26,670
64725	Archie	MO	CASS	2,120	2,219	4.7%	796	835	3	\$25,862
64734	Cleveland	MO	CASS	2,134	2,203	3.2%	810	840	3	\$38,228
64746	Freeman	MO	CASS	1,535	1,610	4.9%	585	616	3	\$30,018
64747	Garden City	MO	CASS	3,872	3,942	1.8%	1,495	1,526	3	\$25,614
<b>Totals</b>				<b>99,633</b>	<b>103,867</b>	<b>4.2%</b>	<b>37,282</b>	<b>38,933</b>	<b>3</b>	<b>\$30,601</b>
Zip	Name	ST	County	Pop18 65+	Pop18 <=18	Females	White	Black	Amer. Ind.	Hisp.
64012	Belton	MO	CASS	4,377	7,693	14,621	24,034	1,641	195	2,435
64078	Peculiar	MO	CASS	1,342	2,328	4,603	8,591	196	52	254
64080	Pleasant Hill	MO	CASS	2,162	3,741	7,084	13,267	102	86	424
64083	Raymore	MO	CASS	3,702	6,461	12,040	20,061	1,900	127	851
64090	Strasburg	MO	CASS	4	-	7	15	-	-	-
64701	Harrisonville	MO	CASS	2,667	3,804	7,766	14,222	170	109	381
64725	Archie	MO	CASS	332	583	1,073	2,033	9	12	43
64734	Cleveland	MO	CASS	449	442	1,057	2,031	17	14	42
64746	Freeman	MO	CASS	284	321	748	1,469	12	5	23
64747	Garden City	MO	CASS	631	1,005	1,920	3,721	23	35	70
<b>Totals</b>				<b>15,950</b>	<b>26,378</b>	<b>50,919</b>	<b>89,444</b>	<b>4,070</b>	<b>635</b>	<b>4,523</b>
<b>Percentages</b>				<b>16.0%</b>	<b>26.5%</b>	<b>51.1%</b>	<b>89.8%</b>	<b>4.1%</b>	<b>0.6%</b>	<b>4.5%</b>

# **III. Community Health Status**

---

[VVV Consultants LLC]



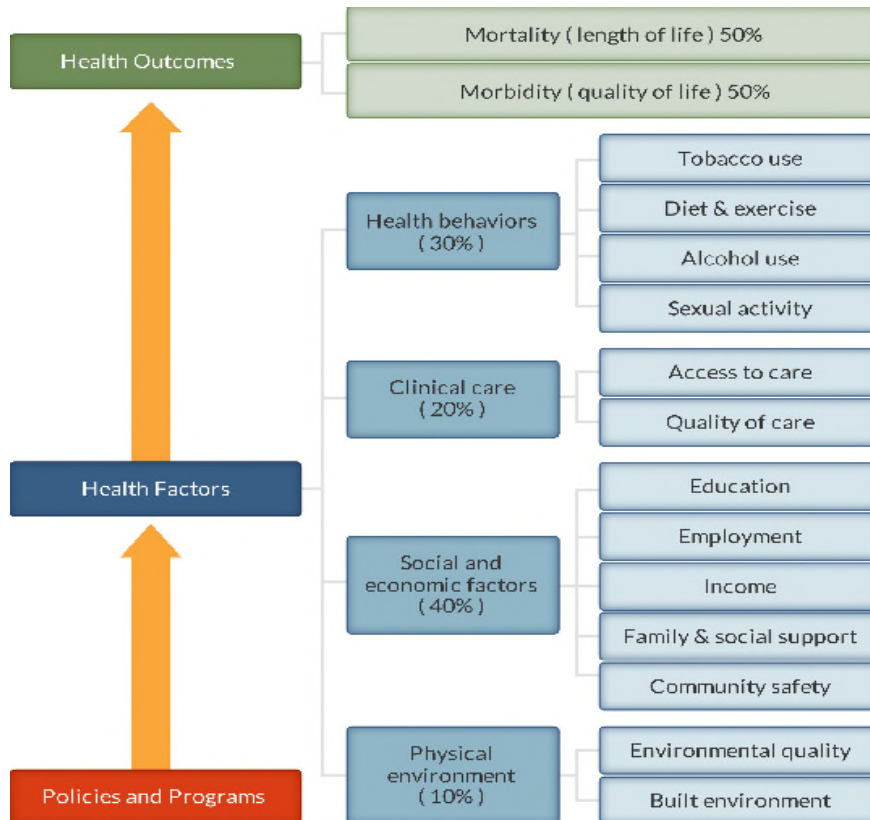
### III. Community Health Status

#### a) Historical Health Statistics- Secondary Research

##### Health Status Profile

This section of the CHNA reviews published quantitative community health indicators from public health sources and results of community primary research. To produce this profile, VVV Consultants LLC staff analyzed & trended data from multiple sources. This analysis focuses on a set of published health indicators organized by ten areas of focus (10 TABS), results from the 2019 RWJ County Health Rankings and conversations from Town Hall participates. Each table published reflects a Trend column, with GREEN denoting growing/high performance indicators, YELLOW denoting minimal change/average performance indicators and RED denoting declining/low performance indicators.

Note: The Robert Wood Johnson Foundation collaborates with the University of Wisconsin Population Health Institute to release annual *County Health Rankings*. As seen below, RWJ's model use a number of health factors to rank each county.>



County Health Rankings model ©2012 UWPHI

## National Research – Year 2019 RWJ Health Rankings:

#	2019 MO Rankings - 115 Counties	Definitions	Cass Co MO	Rural 20 MO Norms
1	<b>Health Outcomes</b>		<b>10</b>	<b>47</b>
	Mortality	Length of Life	<b>17</b>	<b>51</b>
	Morbidity	Quality of Life	<b>8</b>	<b>44</b>
2	<b>Health Factors</b>		<b>14</b>	<b>53</b>
	Health Behaviors	Tobacco Use, Diet/Exercise, Alcohol Use, Sexual Activity	<b>13</b>	<b>50</b>
	Clinical Care	Access to care / Quality of Care	<b>24</b>	<b>65</b>
	Social & Economic Factors	Education, Employment, Income, Family/Social support, Community Safety	<b>12</b>	<b>49</b>
3	<b>Physical Environment</b>	Environmental quality	<b>106</b>	<b>60</b>
<a href="http://www.countyhealthrankings.org">http://www.countyhealthrankings.org</a> , released 2019 Rural 20 MO Norms: Lewis, Marion, Monroe, Pike, Ralls, Shelby, Cass, Johnson, Pettis, Lafayette, Henry, Benton, St. Clair, Bates, Venon, Cedar, Clinton, DeKalb, Caldwell, Daviess.				

## PSA Secondary Research:

When studying community health, it's important to document health data by topical areas for primary service area (PSA). Below is a summary of key findings organized by subject area.

### Tab 1 Demographic Profile

Understanding population and household make-up is vital to start CHNA evaluation.

Tab	Health Indicator	Cass Co MO	Trend	MO State	Rural 20 MO Norm	Source
1a	a Population estimates, July 1, 2017, (V2017)	103,724		6,113,532	23,322	People Quick Facts
	b Population, percent change - April 1, 2010 (estimates base) to July 1, 2017, (V2017)	4.2%		2.1%	-1.3%	People Quick Facts
	c Population per square mile, 2010	143		87	37	People Quick Facts
	d Persons under 5 years, percent, July 1, 2017, (V2017)	6.0%		6.1%	5.9%	People Quick Facts
	e Persons 65 years and over, percent, July 1, 2017	16.5%		16.5%	19.8%	People Quick Facts
	f Female persons, percent, July 1, 2017, (V2017)	51.2%		50.9%	49.2%	People Quick Facts
	g White alone, percent, July 1, 2017, (V2017)	91.8%		83.1%	94.2%	People Quick Facts
	h Black or African American alone, percent, July 1, 2017, (V2017)	4.1%		11.8%	2.8%	People Quick Facts
	i Hispanic or Latino, percent, July 1, 2017, (V2017)	4.5%		4.2%	2.7%	People Quick Facts
	j Foreign born persons, percent, 2013-2017	2.4%		4.0%	1.4%	People Quick Facts
	k Language other than English spoken at home, percent of persons age 5 years+, 2013-2017	3.8%		6.0%	3.7%	People Quick Facts
	l Living in same house 1 year ago, percent of persons age 1 year+, 2013-2017	86.5%		84.3%	85.0%	People Quick Facts
	m Children in single-parent households, percent, 2019	24.0%		33.0%	29.3%	County Health Rankings
	n Total Veterans, 2013-2017	8,298		424,605	2,005	People Quick Facts

**Tab 2 Economic/Business Profile**

Monetary resources will (at times) drive health “access” and self-care.

Tab	Health Indicator	Cass Co MO	Trend	MO State	Rural 20 MO Norm	Source
2	a Per capita income in past 12 months (in 2017 dollars), 2013-2017	\$30,618		\$28,282	\$23,290	People Quick Facts
	b Persons in poverty, percent, 2017	9.2%		13.4%	14.7%	People Quick Facts
	c Total Housing units, July 1, 2017, (V2017)	41,802		2,792,506	10,685	People Quick Facts
	d Total Persons per household, 2012-2016	2.6		2.5	2.4	People Quick Facts
	e Severe housing problems, percent, 2010-2014	86.0%		82.0%	80.3%	County Health Rankings
	f Total of All firms, 2012	7,025		491,606	1,845	People Quick Facts
	g Unemployment, percent, 2019	3.5%		3.8%	4.0%	County Health Rankings
	h Food insecurity, percent, 2019	11.0%		15.0%	13.9%	County Health Rankings
	i Limited access to healthy foods, percent, 2019	9.0%		7.0%	8.2%	County Health Rankings
	j Long commute - driving alone, percent, 2019	49.0%		32.0%	34.4%	County Health Rankings

**Tab 3 Educational Profile**

Currently, school districts are providing on-site primary health screenings and basic care.

Tab	Health Indicator	Cass Co MO	Trend	MO State	Rural 20 MO Norm	Source
3	a Children eligible for free or reduced price lunch, percent, 2019	37.0%		51.0%	54.2%	County Health Rankings
	b Number of Head Start Programs, 2018	2		379	3	US Department of Health & Human Services, Administration for Children and Families. 2018.
	c High school graduate or higher, percent of persons age 25 years+, 2013-2017	92.4%		89.2%	87.7%	People Quick Facts
	d Bachelor's degree or higher, percent of persons age 25 years+, 2013-2017	25.8%		28.2%	17.0%	People Quick Facts

**Tab 4 Maternal and Infant Profile**

Tracking maternal / infant care patterns are vital in understanding the foundation of family health.

Missouri Resident Births (MICA)				
County	2015	2016	2017	Trend
Cass County	1,125	1,125	1,117	
Missouri	75,042	74,664	73,017	

Source: DHSS - MOPHIMS - Birth MICA

**Tab 4 Maternal and Infant Profile (Continued)**

Tab	Health Indicator	Cass Co MO	Trend	MO State	Rural 20 MO Norm	Source	
4	a	Percent of Births Where Prenatal Care began in First Trimester, 2017 (rate per 100)	74.8%		72.5%	73.5%	MOPHIMS
	b	Percentage of Preterm Births, 2013-2017 (rate per 100)	9.3%		10.4%	9.1%	MOPHIMS
	c	Percent of Births with Low Birth Weight, 2013-2017 (rate per 100)	7.3%		8.4%	7.3%	MOPHIMS
	d	Percent of WIC Infants- Ever Breastfed, percent, 2016 (rate per 100)	80.4%		73.0%	74.3%	MOPHIMS
	e	Percent of all Births Occurring to Teens (15-17), 2013-2017 (rate per 100)	1.5%		1.6%	1.6%	MOPHIMS
	f	Percent of Births Occurring to Unmarried (out-of-wedlock) women, 2013-2017 (rate per 100)	34.7%		40.2%	37.5%	MOPHIMS
	g	Percent of births Where Mother Smoked During Pregnancy, 2013-2017 (rate per 100)	13.0%		14.5%	19.4%	MOPHIMS

**Tab 5 Hospitalization/Provider Profile**

Understanding provider access and disease patterns are fundamental in healthcare delivery. Listed below are several vital county statistics.

Tab	Health Indicator	Cass Co MO	Trend	MO State	Rural 20 MO Norm	Source	
5	a	Primary care physicians (MD or DO) (Pop Coverage per Cass Co officed doctor), 2019	3,960:1		1,420:1	3,370:1	County Health Rankings
	b	Preventable hospital stays - Rate of hospital stays for ambulatory-care sensitive conditions per 1,000 Medicare enrollees (lower the better), 2017.	65		57	69	County Health Rankings
	c	Patients Who Gave Their Hospital a Rating of 9 or 10 on a Scale from 0 (Lowest) to 10 (Highest)	73.0%		73.0%	68.4%	CMS Hospital Compare, 10/1/2015-9/30/2016
	d	Patients Who Reported Yes, They Would Definitely Recommend the Hospital	73.0%		71.0%	67.3%	CMS Hospital Compare, 10/1/2015-9/30/2016
	e	Average Time Patients Spent in the Emergency Dept. Before They Were Seen by a Healthcare Professional (in Minutes)	37		46	45	CMS Hospital Compare, 10/1/2015-9/30/2016

**Tab 5 Hospitalization/Provider Profile (Continued)**

#	Inpatient - MHA PO103	Cass Co - ALL IP			
		Trend	FFY18	FFY17	FFY16
1	<b>Total Discharges</b>		14,046	13,462	13,335
2	Pediatric Age 0-17		564	575	507
3	Adult Medical/Surgical Age 18-44		1,233	1,264	1,228
4	Adult Medical/Surgical Age 45-64		3,258	3,065	2,942
5	Adult Medical/Surgical Age 65-74		2,268	2,178	2,109
6	Adult Medical/Surgical Age 75+		3,211	3,012	3,024
7	Psychiatric		1,169	1,141	1,179
8	Obstetric		1,221	1,155	1,229
#	Inpatient - MHA PO103	CRMC Only			
		Trend	FFY18	FFY17	FFY16
1	<b>Total Discharges</b>		755	704	868
2	Pediatric Age 0-17		1	0	7
3	Adult Medical/Surgical Age 18-44		59	46	57
4	Adult Medical/Surgical Age 45-64		207	198	236
5	Adult Medical/Surgical Age 65-74		155	152	177
6	Adult Medical/Surgical Age 75+		286	265	331
7	Psychiatric		47	43	60
8	Obstetric		0	0	0
#	MHA TOT223E -	Trend	FFY18	FFY17	FFY16
	<b>CRMC - Cass Co residents</b>		16,012	16,408	15,609
	<b>CRMC Emergency %</b>		48.6%	49.5%	48.3%

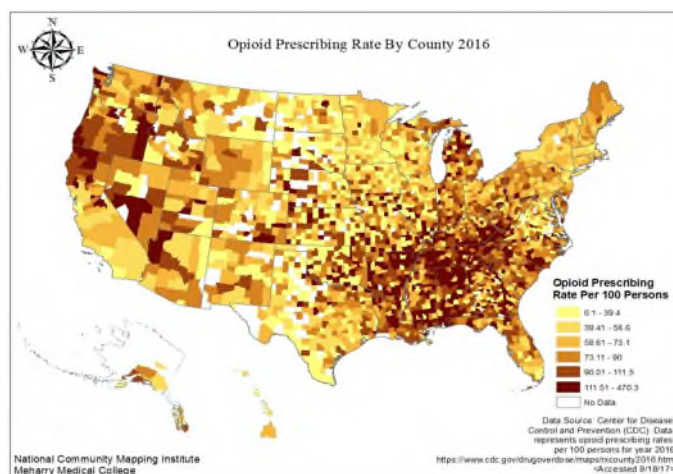
**Tab 6 Behavioral Profile**

Behavioral healthcare provides another important indicator of community health status.

Tab	Health Indicator	Cass Co MO	Trend	MO State	Rural 20 MO Norm	Source
6	a Depression: Medicare Population, percent, 2015	17.0%		20.0%	16.7%	Centers for Medicare and Medicaid Services
	b Age-adjusted Suicide Mortality Rate per 100,000 population, 2014-2016 (lower is better)	15.8		18.5	15.5	World Bank
	c Poor mental health days, 2019	4.0		4.4	4.4	County Health Rankings

### Tab 6 Behavioral Profile (Continued)

Opioid Prescription Rate per 100 – 2017 (Cass Co= 95.1 and State of MO = 71.8)



### Tab 7a Risk Indicators & Factors Profile

Knowing community health risk factors and disease patterns can aid in the understanding next steps to improve health.

Tab	Health Indicator	Cass Co MO	Trend	MO State	Rural 20 MO Norm	Source
7a	a Adult obesity, percent, 2019	34.0%		32.0%	34.2%	County Health Rankings
	b Adult smoking, percent, 2019	18.0%		22.0%	21.1%	County Health Rankings
	c Excessive drinking, percent, 2019	18.0%		19.0%	17.0%	County Health Rankings
	d Physical inactivity, percent, 2019	26.0%		25.0%	27.9%	County Health Rankings
	e Poor physical health days, 2019	4.1		4.2	4.5	County Health Rankings
	f Sexually transmitted infections, rate per 100k, 2019	322.8		507.0	273.9	County Health Rankings

### Tab 7b Risk Indicators & Factors Profile

Tab	Health Indicator	Cass Co MO	Trend	MO State	Rural 20 MO Norm	Source
7b	a Hypertension: Medicare Population, 2015	53.4%		54.6%	52.1%	CMS
	b Hyperlipidemia: Medicare Population, 2015	43.3%		41.8%	38.2%	CMS
	c Heart Failure: Medicare Population, 2015	12.5%		13.7%	13.8%	CMS
	d Chronic Kidney Disease: Medicare Pop, 2015	17.6%		18.2%	15.6%	CMS
	e COPD: Medicare Population, 2015	12.5%		13.4%	14.5%	CMS
	f Atrial Fibrillation: Medicare Population, 2015	9.6%		8.2%	8.6%	CMS
	g Cancer: Medicare Population, 2015	7.2%		7.8%	7.3%	CMS
	h Osteoporosis: Medicare Population, 2015	5.2%		5.8%	4.6%	CMS
	i Asthma: Medicare Population, 2015	8.0%		8.6%	8.1%	CMS
	j Stroke: Medicare Population, 2015	4.1%		3.9%	3.7%	CMS

**Tab 8a Uninsured Profile/Community Benefit**

Based on state estimations, the number of insured is documented below. Also, the amount of charity care (last three years of free care) from area providers is trended below.

Tab	Health Indicator	Cass Co MO	Trend	MO State	Rural 20 MO Norm	Source
8	a Uninsured, percent, 2019	9.0%		11.0%	12.3%	County Health Rankings
	b Percent of Insured Pop Receiving Medicaid, 2013-2017	13.1%		16.3%	18.9%	US Census Bureau, American Community Survey, 2013-17

Source Hospital Internal Records					
	Cass Regional Medical Center	TREND	YR 2018	YR 2017	YR 2016
1	Bad Debt	+	\$14,082,536	\$13,688,102	\$11,261,686
2	Charity Care		\$1,140,800	\$1,591,259	\$1,018,581

**Tab 9 Mortality Profile**

The leading causes of county deaths are listed below. Areas of higher than expected are so noted.

Tab	Health Indicator	Cass Co MO	Trend	MO State	Rural 20 MO Norm	Source
9	a Life Expectancy for Males, 2014	76.4		74.9	75.0	World Bank
	b Life Expectancy for Females, 2014	80.3		80.1	79.9	World Bank
	c Alcohol-impaired driving deaths, percent, 2019	31.0%		29.0%	25.3%	County Health Rankings

Causes of Death by County of Residence, MO 2016	Cass County MO	%	TREND	State of MO	%
<b>TOTAL County</b>	<b>932</b>	<b>100%</b>		<b>61,866</b>	<b>100%</b>
Malignant neoplasms	216	23.2%		861	1.4%
All other diseases	202	21.7%		71	0.1%
Diseases of heart	200	21.5%		155	0.3%
Chronic lower respiratory disease	84	9.0%		1,606	2.6%
Unintentional injuries	37	4.0%		2,545	4.1%
Cerebrovascular diseases	37	4.0%		14,818	24.0%
Influenza and pneumonia	27	2.9%		592	1.0%
Suicide	21	2.3%		3,159	5.1%
Alzheimer's disease	18	1.9%		3,941	6.4%
Nephritis and nephrosis	15	1.6%		700	1.1%
Diabetes mellitus	14	1.5%		1,280	2.1%
Parkinson's disease	14	1.5%		9,741	15.7%
Septicemia	13	1.4%		1,515	2.4%
...Accidental poisoning	12	1.3%		209	0.3%
...Motor vehicle crashes	11	1.2%		620	1.0%
...Other unintentional injuries	8	0.9%		690	1.1%

<https://health.mo.gov/data/vitalstatistics/mvs16/Table26c.pdf>

**Tab 10 Preventive Quality Measures Profile**

The following table reflects future health of the county. This information also is an indicator of community awareness of preventative measures.

Tab	Health Indicator	Cass Co MO	Trend	MO State	Rural 20 MO Norm	Source
10	a Access to exercise opportunities, percent, 2019	71.0%		76.0%	46.0%	County Health Rankings
	b Diabetes monitoring, percent, 2019	43.0%		43.0%	39.3%	County Health Rankings
	c Mammography screening, percent, 2019	45.0%		44.0%	34.9%	County Health Rankings
	d Percent Annual Check-Up Visit with PCP (Have a regular Doctor), 2016	77.9%		NA	79.1%	MO Department of Health and Senior Services, MO Co-Level Study (CLS). 2016.
	e Percent Annual Check-Up Visit with Dentist (Within last 12 months), 2016	68.5%		NA	55.9%	MO Department of Health and Senior Services, MO Co-Level Study (CLS). 2016.
	f Percent Annual Check-Up Visit with Eye Doctor	NA		NA	NA	TBD



## b) Online Research- Health Status

### PSA Primary Research:

For each CHNA Wave # 3 evaluation, a community stakeholder survey has been created and administered to collect “current” healthcare information for Cass County, MO. Responses for Cass County online survey equals 110 residents. Below are multiple charts reviewing survey demographics.

**Chart #1 – Cass County, MO Online Feedback Response N=110**

<b>Community Health Needs Assessment Wave #3</b>			
For reporting purposes, are you involved in or are you a .... ?	Cass Co MO N=110	Trend	Rural Norms 33 Co N=5,972
<b>Business / Merchant</b>	10.7%	Green	11.3%
<b>Community Board Member</b>	8.0%	Yellow	8.9%
<b>Case Manager / Discharge Planner</b>	0.9%	Yellow	1.3%
<b>Clergy</b>	1.8%	Yellow	1.5%
<b>College / University</b>	0.9%	Yellow	2.4%
<b>Consumer Advocate</b>	1.8%	Yellow	1.9%
<b>Dentist / Eye Doctor / Chiropractor</b>	0.0%	White	0.6%
<b>Elected Official - City/County</b>	1.8%	Yellow	2.1%
<b>EMS / Emergency</b>	2.7%	Yellow	2.6%
<b>Farmer / Rancher</b>	3.6%	Yellow	6.6%
<b>Hospital / Health Dept</b>	22.3%	Green	18.9%
<b>Housing / Builder</b>	0.0%	White	0.7%
<b>Insurance</b>	0.9%	Yellow	1.1%
<b>Labor</b>	0.0%	White	2.3%
<b>Law Enforcement</b>	3.6%	Yellow	1.7%
<b>Mental Health</b>	0.0%	White	2.7%
<b>Other Health Professional</b>	8.0%	Green	11.2%
<b>Parent / Caregiver</b>	11.6%	Green	17.0%
<b>Pharmacy / Clinic</b>	2.7%	Yellow	2.3%
<b>Media (Paper/TV/Radio)</b>	0.0%	White	0.6%
<b>Senior Care</b>	1.8%	Yellow	3.0%
<b>Teacher / School Admin</b>	5.4%	Green	6.7%
<b>Veteran</b>	4.5%	Green	3.1%
<b>Unemployed / Other</b>	7.1%	Green	8.5%

Rural 33 Norms Include the following counties: Appanoose IA, Atchison KS, Barton, Bates MO, Brown KS, Butler KS, Carroll IA, Cass MO, Clinton MO, Cowley, Decatur IA, Dickinson KS, Edwards, Ellsworth KS, Fremont IA, Furnas NE, Hays, Hoxie, Jasper IA, Johnson MO, Kiowa, Linn, Marion MO, Miami, Montgomery KS, Nemaha, Osborne, Page IA, Pawnee, Pike MO, Russell KS, Smith, Trego.

**Chart #2 - Quality of Healthcare Delivery Community Rating**

Community Health Needs Assessment Wave #3			
How would you rate the "Overall Quality" of healthcare delivery in our community?	Cass Co MO N=110	Trend	Rural Norms 33 Co N=5,972
<b>Top Box %</b>	<b>20.9%</b>		<b>21.6%</b>
<b>Top 2 Boxes %</b>	<b>68.2%</b>		<b>65.0%</b>
<b>Very Poor</b>	<b>0.9%</b>		<b>1.3%</b>
<b>Poor</b>	<b>5.5%</b>		<b>5.9%</b>
<b>Average</b>	<b>25.5%</b>		<b>27.4%</b>
<b>Good</b>	<b>47.3%</b>		<b>43.4%</b>
<b>Very Good</b>	<b>20.9%</b>		<b>21.6%</b>

**Chart #3 – Overall Community Health Quality Trend**

Community Health Needs Assessment Wave #3			
When considering "overall community health quality", is it ...	Cass Co MO N=110	Trend	Rural Norms 33 Co N=5,972
<b>Increasing - moving up</b>	<b>37.3%</b>		<b>40.2%</b>
<b>Not really changing much</b>	<b>42.7%</b>		<b>39.8%</b>
<b>Decreasing - slipping</b>	<b>8.2%</b>		<b>11.2%</b>

**Chart #4 – Re-evaluate Past Community Health Needs Assessment Needs**

CHNA Wave #3 - Year 2019		Cass County MO N=110			
Past CHNAs health needs identified		Ongoing Problem			Pressing
#	Topic	Votes	%	Trend	RANK
1	Mental Health Services	64.9%	50		1
2	Drugs	59.7%	46		2
3	Urgent Care Services	54.6%	42		3
4	Healthcare Transportation	49.4%	38		4
5	Obesity (Nutrition/ Exercise)	44.2%	34		5
6	Access to Dental Services for Uninsured	37.7%	29		7
7	Suicides	32.5%	25		6
8	Lack of local Health Department funding	23.4%	18		9
9	Access to Primary Care	19.5%	15		8

**Chart #5 - Community Health Needs Assessment "Causes of Poor Health"**

<b>Community Health Needs Assessment Wave #3</b>			
In your opinion, what are the root causes of "poor health" in our community?	Cass Co MO N=110	Trend	Rural Norms 33 Co N=5,972
Finance & Insurance Coverage*	22.2%		14.7%
Lack of awareness of existing local programs, providers, and services	15.7%		17.9%
Limited access to mental health assistance	19.1%		16.7%
Elder assistance programs	7.8%		9.1%
Lack of health & wellness education	9.6%		11.6%
Family assistance programs	4.8%		7.4%
Chronic disease prevention	12.2%		10.4%
Case management assistance	4.8%		7.0%
Other (please specify)	3.9%		5.3%

*Note: \*Finance & Insurance Coverage Norm is for 19 counties.*

**Chart #6 – Community Rating of HC Delivery Services (Perceptions)**

<b>CHNA Wave #3 - 2019</b>	Cass Co MO N=110		Trend	Rural Norms 33 Co N=5,972	
	Top 2 boxes	Bottom 2 boxes		Top 2 boxes	Bottom 2 boxes
Ambulance Services	77.8%	4.2%		85.6%	2.4%
Child Care	40.9%	16.7%		50.2%	12.0%
Chiropractors	74.3%	2.9%		74.1%	4.9%
Dentists	78.4%	2.7%		62.7%	14.4%
Emergency Room	72.0%	9.3%		68.1%	11.0%
Eye Doctor/Optometrist	66.2%	8.1%		74.9%	7.0%
Family Planning Services	29.0%	29.0%		39.5%	18.0%
Home Health	52.9%	10.0%		57.7%	10.2%
Hospice	66.2%	2.8%		69.9%	6.5%
Inpatient Services	75.3%	4.1%		72.7%	6.3%
Mental Health	18.6%	47.1%		23.8%	35.8%
Nursing Home	35.2%	19.7%		43.9%	18.0%
Outpatient Services	69.3%	5.3%		73.8%	4.6%
Pharmacy	87.5%	1.4%		87.3%	2.5%
Physician Clinics	81.1%	8.1%		76.0%	5.4%
Public Health	46.9%	17.2%		58.7%	8.7%
School Nurse	67.7%	6.2%		63.3%	8.0%
Specialists	54.8%	11.0%		57.2%	12.9%

**Chart #7 – Community Health Readiness**

Community Health Needs Assessment Wave #3		Bottom 2 boxes	
Community Health Readiness is vital. How would you rate each of the following? (% Poor / Very Poor)	Cass Co MO N=110	Trend	Rural Norms 33 Co N=5,972
Early Childhood Development Programs	6.3%	Yellow	10.4%
Emergency Preparedness	11.6%	Red	9.1%
Food and Nutrition Services/Education	18.2%	Red	14.5%
Health Screenings (asthma, hearing, vision, scoliosis)	14.3%	Red	14.9%
Immunization Programs	5.7%	Yellow	6.8%
Obesity Prevention & Treatment	39.7%	Red	33.1%
Prenatal / Child Health Programs	33.3%	Red	12.0%
Sexually Transmitted Disease Testing	37.7%	Red	16.3%
Spiritual Health Support	9.2%	Yellow	11.9%
Substance Use Treatment & Education	50.8%	Red	34.2%
Tobacco Prevention & Cessation Programs	40.3%	Red	30.0%
Violence Prevention	34.9%	Red	32.5%
Women's Wellness Programs	21.0%	Red	16.6%
WIC Nutrition Program	8.2%	Yellow	6.8%
Poverty / Financial Health	35.3%	Red	35.8%

Note: The calculated Norm for Poverty / Financial Health is for 16 counties.

**Chart #8 – Healthcare Delivery “Outside our Community”**

Community Health Needs Assessment Wave #3			
In the past 2 years, did you or someone you know receive HC outside of our community?	Cass Co MO N=110	Trend	Rural Norms 33 Co N=5,972
Yes	75.0%	Yellow	81.5%
No	13.9%	Yellow	13.4%
I don't know	11.1%	Red	5.1%

**Specialties:**

SPEC	CTS
SURG	8
PRIM	6
DERM	5
ENT	4
FP	4
GAS	4
MAMO	4
OBG	4
ORTH	4
IP	3

**Chart #8 – Healthcare Delivery “Outside our Community” (Continued)**

Community Health Needs Assessment Wave #3			
Are we actively working together to address community health?	Cass Co MO N=110	Trend	Rural Norms 33 Co N=5,972
Yes	40.8%	Red	46.8%
No	7.0%	Yellow	12.7%
I don't know	52.1%	Red	40.0%

**Chart #9 – What Healthcare topics need to be discussed in future Town Hall Meeting**

<b>Community Health Needs Assessment Wave #3</b>			
<b>What needs to be discussed further at our CHNA Town Hall meeting?</b>	<b>Cass Co MO N=110</b>	<b>Trend</b>	<b>Rural Norms 33 Co N=5,972</b>
<b>Abuse/Violence</b>	<b>7.3%</b>	<b>Red</b>	<b>5.5%</b>
<b>Alcohol</b>	<b>3.7%</b>	<b>Yellow</b>	<b>4.8%</b>
<b>Breast Feeding Friendly Workplace</b>	<b>2.1%</b>	<b>White</b>	<b>1.7%</b>
<b>Cancer</b>	<b>3.1%</b>	<b>Yellow</b>	<b>3.7%</b>
<b>Diabetes</b>	<b>4.5%</b>	<b>Yellow</b>	<b>4.3%</b>
<b>Drugs/Substance Abuse</b>	<b>10.0%</b>	<b>Red</b>	<b>9.4%</b>
<b>Family Planning</b>	<b>3.9%</b>	<b>Yellow</b>	<b>2.7%</b>
<b>Heart Disease</b>	<b>2.9%</b>	<b>Yellow</b>	<b>3.0%</b>
<b>Lead Exposure</b>	<b>0.5%</b>	<b>White</b>	<b>0.8%</b>
<b>Mental Illness</b>	<b>10.5%</b>	<b>Red</b>	<b>10.5%</b>
<b>Nutrition</b>	<b>3.7%</b>	<b>Yellow</b>	<b>4.8%</b>
<b>Obesity</b>	<b>8.4%</b>	<b>Red</b>	<b>7.6%</b>
<b>Environmental Health</b>	<b>1.6%</b>	<b>White</b>	<b>1.4%</b>
<b>Physical Exercise</b>	<b>5.5%</b>	<b>Red</b>	<b>5.8%</b>
<b>Poverty</b>	<b>4.7%</b>	<b>Yellow</b>	<b>7.0%</b>
<b>Lung Disease</b>	<b>0.8%</b>	<b>White</b>	<b>1.7%</b>
<b>Sexually Transmitted Diseases</b>	<b>2.9%</b>	<b>White</b>	<b>2.4%</b>
<b>Smoke-Free Workplace</b>	<b>0.5%</b>	<b>White</b>	<b>1.6%</b>
<b>Suicide</b>	<b>7.3%</b>	<b>Red</b>	<b>7.2%</b>
<b>Teen Pregnancy</b>	<b>3.1%</b>	<b>Yellow</b>	<b>3.1%</b>
<b>Tobacco Use</b>	<b>3.9%</b>	<b>Yellow</b>	<b>3.6%</b>
<b>Vaccinations</b>	<b>1.8%</b>	<b>White</b>	<b>3.0%</b>
<b>Water Quality</b>	<b>2.4%</b>	<b>Yellow</b>	<b>3.3%</b>
<b>Wellness Education</b>	<b>4.7%</b>	<b>Yellow</b>	<b>6.0%</b>

# **IV. Inventory of Community Health Resources**

---

[VVV Consultants LLC]

## Inventory of Health Services - Cass County MO - 2019

Cat	HC Services Offered in county: Yes / No	Hospital	HLTH Dept	Private
Clinic	Primary Care	yes	yes	yes
Hosp	Alzheimer Center	no	no	yes
Hosp	Ambulatory Surgery Centers	yes	no	no
Hosp	Arthritis Treatment Center	yes	no	no
Hosp	Bariatric/weight control services	yes	no	yes
Hosp	Birthing/LDR/LDRP Room	no	no	no
Hosp	Breast Cancer	yes	no	no
Hosp	Burn Care	no	no	no
Hosp	Cardiac Rehabilitation	yes	no	no
Hosp	Cardiac Surgery	no	no	no
Hosp	Cardiology services	yes	no	no
Hosp	Case Management	yes	no	yes
Hosp	Chaplaincy/pastoral care services	yes	no	no
Hosp	Chemotherapy	yes	no	no
Hosp	Colonoscopy	yes	no	no
Hosp	Crisis Prevention	yes	no	yes
Hosp	CTScanner	yes	no	no
Hosp	Diagnostic Radioisotope Facility	yes	no	no
Hosp	Diagnostic/Invasive Catheterization	yes	no	no
Hosp	Electron Beam Computed Tomography (EBCT)	no	no	no
Hosp	Enrollment Assistance Services	yes	no	yes
Hosp	Extracorporeal Shock Wave Lithotripter (ESWL)	no	no	no
Hosp	Fertility Clinic	no	no	no
Hosp	FullField Digital Mammography (FFDM)	yes	no	no
Hosp	Genetic Testing/Counseling	yes	no	no
Hosp	Geriatric Services	yes	no	yes
Hosp	Heart	no	no	yes
Hosp	Hemodialysis	no	no	yes
Hosp	HIV/AIDS Services	yes	no	no
Hosp	Image-Guided Radiation Therapy (IGRT)	no	no	no
Hosp	Inpatient Acute Care - Hospital services	yes	no	yes
Hosp	Intensity-Modulated Radiation Therapy (IMRT) 161	no	no	no
Hosp	Intensive Care Unit	yes	no	no
Hosp	Intermediate Care Unit	no	no	no
Hosp	Interventional Cardiac Catheterization	yes	no	no
Hosp	Isolation room	no	no	no
Hosp	Kidney	no	no	yes
Hosp	Liver	no	no	yes
Hosp	Lung	no	no	yes
Hosp	MagneticResonance Imaging (MRI)	yes	no	no
Hosp	Mammograms	yes	no	no
Hosp	Mobile Health Services	no	no	yes
Hosp	Multislice Spiral Computed Tomography (<64 slice CT)	yes	no	no
Hosp	Multislice Spiral Computed Tomography (<64+ slice CT)	yes	no	no
Hosp	Neonatal	no	no	no
Hosp	Neurological services	yes	no	yes
Hosp	Obstetrics	no	no	yes
Hosp	Occupational Health Services	yes	no	yes
Hosp	Oncology Services	yes	no	no
Hosp	Orthopedic services	yes	no	yes
Hosp	Outpatient Surgery	yes	no	no
Hosp	Pain Management	yes	no	yes
Hosp	Palliative Care Program	yes	no	yes
Hosp	Pediatric	no	no	yes
Hosp	Physical Rehabilitation	yes	no	yes
Hosp	Positron Emission Tomography (PET)	yes	no	no
Hosp	Positron Emission Tomography/CT (PET/CT)	yes	no	no
Hosp	Psychiatric Services	yes	no	yes

## Inventory of Health Services - Cass County MO - 2019

Cat	HC Services Offered in county: Yes / No	Hospital	HLTH Dept	Private
Hosp	Radiology, Diagnostic	yes	no	yes
Hosp	Radiology, Therapeutic	no	no	no
Hosp	Reproductive Health	yes	no	no
Hosp	Robotic Surgery	yes	no	no
Hosp	Shaped Beam Radiation System 161	no	no	no
Hosp	Single Photon Emission Computerized Tomography	no	no	no
Hosp	Sleep Center	yes	no	no
Hosp	Social Work Services	yes	no	yes
Hosp	Sports Medicine	yes	no	yes
Hosp	Stereotactic Radiosurgery	no	no	no
Hosp	Swing Bed Services	yes	no	yes
Hosp	Transplant Services	no	no	no
Hosp	Trauma Center -Level III	yes	no	no
Hosp	Ultrasound	yes	no	yes
Hosp	Women's Health Services	yes	yes	yes
Hosp	Wound Care	yes	no	no
SR	Adult Day Care Program	no	no	yes
SR	Assisted Living	no	no	yes
SR	Home Health Services	no	no	yes
SR	Hospice	no	no	yes
SR	LongTerm Care	no	no	yes
SR	Nursing Home Services	no	no	yes
SR	Retirement Housing	no	no	yes
SR	Skilled Nursing Care	yes	no	yes
ER	Emergency Services	yes	no	no
ER	Urgent Care Center	no	no	yes
ER	Ambulance Services	no	no	yes
SERV	Alcoholism-Drug Abuse	no	no	yes
SERV	Blood Donor Center	no	no	no
SERV	Chiropractic Services	no	no	yes
SERV	Complementary Medicine Services	no	no	yes
SERV	Dental Services	no	no	yes
SERV	Fitness Center	no	no	yes
SERV	Health Education Classes	yes	yes	yes
SERV	Health Fair (Annual)	yes	no	yes
SERV	Health Information Center	yes	no	yes
SERV	Health Screenings	yes	yes	yes
SERV	Meals on Wheels	no	no	yes
SERV	Nutrition Programs	yes	yes	yes
SERV	Patient Education Center	yes	no	no
SERV	Support Groups	yes	no	yes
SERV	Teen Outreach Services	no	no	yes
SERV	Tobacco Treatment/Cessation Program	yes	no	yes
SERV	Transportation to Health Facilities	no	no	yes
SERV	Wellness Program	yes	yes	yes



## Providers Delivering Care in Cass Regional PSA - 2019

# of FTE Providers working in county	Physicians Counts				Allied Staff
	County Based @ CRMC	County Based @ Belton	Cass County Based	Visiting DRs *	PA / NP @ CRMC
<b>Primary Care:</b>					
Family Practice	9.5	5.0	3.0		14.0
Internal Medicine / Geriatrician	1.0	3.0			2.0
Obstetrics/Gynecology	0.2	0.4		0.2	
Pediatrics			3.0		
<b>Medicine Specialists:</b>					
Allergy/Immunology		0.2		0.2	
Cardiology	1.0	1.0			0.2
Dermatology	0.6				0.2
Endocrinology	0.2	0.2		0.4	0.2
Gastroenterology		0.6		0.6	
Oncology/RADO	0.1	0.4		0.5	0.2
Infectious Diseases		0.2			0.2
Nephrology	0.2	0.2		0.4	
Neurology	0.7	0.7		1.4	
Psychiatry	1.1		2.0	1.1	
Pulmonary	0.4	1.0		1.4	0.1
Rheumatology	0.5				
<b>Surgery Specialists:</b>					
General Surgery / Colon / Oral	3.0	2.0			
Neurosurgery					
Ophthalmology	0.4		3.0	0.6	
Orthopedics	1.0	2.0			2.0
Otolaryngology (ENT)	1.0	1.0		2.0	
Plastic/Reconstructive					
Thoracic/Cardiovascular/Vass		0.2			
Urology	0.3	0.3		0.6	
<b>Hospital Based:</b>					
Anesthesia/Pain	1.6	3.6			4.5
Emergency	5.2	8.0			4.0
Urgent Care			4.0		
Radiology	1.0	1.0			
Pathology	1.0	1.0			
Hospitalist	2.4	4.0			
Neonatal/Perinatal					
Physical Medicine/Rehab					
Wound Care	0.3				0.6
Podiatry	0.4		2.0		
<b>TOTALS</b>	<b>33.1</b>	<b>36.0</b>	<b>17.0</b>	<b>9.4</b>	<b>28.2</b>

\* Total # of FTE Specialists serving community whose office is outside Cass County.

## Visiting Specialists to Cass Regional Medical Center 2019

SPECIALTY	Physician Name or Group	Specialist Office Location (City)	At Hospital	At MOB	FTEs (240)
Audiology	Danielle Barton, Au.D	ENT Associates of Greater Kansas City	Rock Haven Medical Mall, Nose and Throat Clinic- Suite 220	Every Tues, 3rd Thurs, 2nd and 4th Fri	0.05
Audiology	Kelly Spiller, Au.D	ENT Associates of Greater Kansas City	Rock Haven Medical Mall, Nose and Throat Clinic- Suite 220	Every Mon, Wed, Thurs	0.15
Cardiology	Carrie Totta, MD, Lillard Ashley, MD, Kiranmayi Chilappa, MD, Jennifer Parris, NP	Midwest Heart & Vascular	Rock Haven Medical Mall, Suites 200 and 205	by appointment Monday - Friday	1.00
Chiropractic	Rachael Porter, DC. Alex Shatt, DC	KC Core	Rockhaven Medical Mall- Suite 170	Monday - Friday	1.00
Dermatology	Marija Tonkovic-Capin, MD		Rock Haven Speciality Clinic -Suite 150	Every Mon, 2nd and 4th Wed	0.30
Dermatology	Viseslav Tonkovic-Capin, MD		Rock Haven Speciality Clinic -Suite 150	Every Tues, 3rd Thurs, 2nd and 4th Fri (AM)	0.30
ENT	Brandon Johnson, MD	ENT Associates of Greater Kansas City	Rock Haven Medical Mall, Nose and Throat Clinic- Suite 220	Mon and Thurs	0.40
ENT	Kelvin Walls, MD	ENT Associates of Greater Kansas City	Rock Haven Medical Mall, Nose and Throat Clinic- Suite 220	Tues	0.20
ENT	Nicholas Wirtz, MD	ENT Associates of Greater Kansas City	Rock Haven Medical Mall, Nose and Throat Clinic- Suite 220	Wed	0.20
Endocrinology	Madhavi Yarlagadda, MD	Midwest Endocrine Associates	Rock Haven Medical Mall- Suite 200	2nd and 3rd Thurs	
Endoscopy	Aaron L. Travis, DO	Harrisonville Family Medicine	Cass Regional Medical Center-GI Clinic	Mon, Tues, Wed, Fri (AM)	0.40
Endoscopy / General Surgery/ Vein	Jack Hudkins, MD		Cass Regional Medical Center-GI Clinic / Rock Haven Medical Mall General Surgery Clinic Suite 220	Mon (PM), Wed (AM)/ Mon (PM), Wed (PM), Thurs, Fri	1.00
Endoscopy / General Surgery/ Bariatrics	Walter Costner, MD		Cass Regional Medical Center-GI Clinic / Rock Haven Medical Mall General Surgery Clinic Suite 220	Mon (AM), Tues (AM)/ Tues (PM), Wed, Fri	1.00
Endoscopy / General Surgery	Clint Seifert, MD		Cass Regional Medical Center-GI Clinic / Rock Haven Medical Mall General Surgery Clinic Suite 220	Thurs (AM), Fri (PM)/ Mon, Tue, Thurs (PM), Fri (AM)	1.00
Hematology / Oncology	Jaswinder Singh, MD	Midwest Oncology Associates	Cass Regional Specialist Clinic	Mon (PM)	0.10
Hematology / Oncology	Mary Kellam-Upton, MSN, FNP-C	Midwest Oncology Associates	Cass Regional Specialist Clinic	Mon (AM)	0.10
Hospitalist	Patrica Borden, MD, Nick Chitaia, MD, Ziana Leise, MD, Vijay Parthiban, MD, Sreedhar Rama, MD	P & C Healthcare	Cass Regional Medical Center	Monday - Sunday	2.00
Gynecology	Megan Sneed, MD	Women's Center at Lee's Summit	Rock Haven Medical Mall, Suite 205	Every Wed	0.20
Gynecology	Natasha N. Patel, MD	Midwest Women's Healthcare Specialists	Rock Haven Medical Mall, Suite 205	Every Mon	0.20
Infusion Clinic			Cass Regional Specialty Clinic	Monday - Friday	
Nephrology	Robery E. Golder, MD	Midwest Nephrology Consultants, PA	Rock Haven Medical Mall Dialysis Clinic	Mon	0.10
Nephrology	Hemender Vats, MD	Midwest Nephrology Consultants, PA	Rock Haven Medical Mall Dialysis Clinic	Mon	0.10
Neurology/EMG	Michael Schwartzman, DO		Rock Haven Speciality Clinic- Suite 150	Neuro Wed / EMG 2 Fri per month	0.25
Neurology	Suzanne Crandall, MD		Rock Haven Speciality Clinic- Suite 150	Fri (varied)	0.05
Neurology/EMG	Iftekhar Ahmed, MD	Research Neurology Associates	Rock Haven Medical Mall - Suite 220	Tues	0.20
Neurology/EMG	Kenneth R. VanOwen, MD	Research Neurology Associates	Rock Haven Medical Mall - Suite 220	Fri	0.20
Ophthalmology	Christopher S. Banning, MD	Cokingtin Eye Center	Cass Regional Medical Center/ Rock Haven Speciality Clinic- Suite 150	1st Tues (Surg) / Wed clinic	0.10
Ophthalmology	Christopher Pole, MD	Cokingtin Eye Center	Cass Regional Medical Center/ Rock Haven Speciality Clinic- Suite 150	3rd Tues (Surg) / Wed clinic	0.10
Orthopedics	Kenneth W. Peterson, DO		Cass Regional Orthopedics Rockhaven Medical Mall Suite 120 / Pleasant Hill Medical Clinic	Mon and Wed / Thurs (AM) / Tues and Fri (Surg)	0.90
Orthopedics	Danny K. Carroll, MD, Kim Wikley, NP	Bone and Joint Specialists	Cass Regional Orthopedics Rock Haven Medical Mall Suite 120	Thurs	0.20
Pain Mgmt	Richard L. Morgan, MD	SJA Pain Associates	Cass Regional Medical Center Pain Clinic	Every Tues	0.20
Pain Mgmt	James E. Johnson, DO	SJA Pain Associates	Cass Regional Medical Center Pain Clinic	Every Mon and Thurs	0.40
Podiatry	William Cruce, DPM		Rock Haven Speciality Clinic -Suite 150	Mon and Thurs	0.40

## Visiting Specialists to Cass Regional Medical Center 2019

SPECIALTY	Physician Name or Group	Specialist Office Location (City)	At Hospital	At MOB	FTEs (240)
Psychiatry	Kevin Mays, MD	Psychiatry Associates of Kansas City	Rock Haven Medical Mall- Suite 100	4th Mon, 4th Thurs, 2nd & 4th Fri	0.10
Pulmonary	Hamza Alshami, MD, Daniel Balmacada, MD, William Beary, MD, Michael Chacey, MD, Brian Mieczkowski, MD, Nichle VanDuynes, DO, Katie Kincaide, NP,	KC Pulmonary Practice	Rock Haven Medical Mall- Suite 200	Tues and Wed	0.40
Rheumatology	Kevin Latinis, MD		Cass Regional Specialist Clinic	2nd Mon, Every Wed and Thurs	0.45
Urology	Billy Perry, MD		Rock Haven Speciality Clinic- Suite 150	1-4th Tues / Thurs (Surg)	0.20
Urology	Joseph Myers, MD		Rock Haven Speciality Clinic- Suite 150	Every Mon (AM)	0.10
Wound	Walter Costner, MD		The Wound Center at Rock Haven Speciality Clinic- Suite 150	Mon (PM)	0.10
Wound	Shaun B. Holden, MD		The Wound Center at Rock Haven Speciality Clinic- Suite 150	Tues (AM)	0.10
Wound	William Cruce, DPM		The Wound Center at Rock Haven Speciality Clinic- Suite 150	Thurs (AM)	0.10
Wound	Molly Urton, MSN, FNP-BC		The Wound Center at Rock Haven Speciality Clinic- Suite 150	Mon, Wed, Fri (AM)	0.40

# **Cass County, Missouri**

## **Area Healthcare Services – Year 2019**

### **Emergency Numbers**

<b>Police/Sheriff</b>	<b>911</b>
<b>Fire</b>	<b>911</b>
<b>Ambulance</b>	<b>911</b>

**Cass County Sheriff**  
**(816) 380-5200**

### **Non-Emergency Numbers**

	<b>Police</b>	<b>Fire</b>	<b>Ambulance</b>
<b>Harrisonville</b>	<b>(816) 380-8320</b>	<b>(816) 380-8592</b>	<b>(816) 380 8925</b>
<b>Belton</b>	<b>(816) 331-4331</b>	<b>(816) 331-7969</b>	<b>(816) 331-7969</b>
<b>Raymore</b>	<b>(816) 331-0350</b>	<b>(816) 331-3008</b>	<b>(816) 331-3008</b>
<b>Pleasant Hill</b>	<b>(816) 540-9109</b>	<b>(816) 540-9108</b>	<b>(816) 540-9109</b>
<b>Peculiar</b>	<b>(816) 779-5102</b>	<b>(816) 779-5766</b>	<b>(816) 779-5766</b>
<b>Archie</b>	<b>(816) 430-5242</b>	<b>(816) 380-6744</b>	<b>(816) 380-6744</b>
<b>Cleveland</b>	<b>(816) 618-3059</b>	<b>(816) 618-3998</b>	
<b>Freeman</b>	<b>(816) 250-2902</b>	<b>(816) 889-2550</b>	
<b>Garden City</b>	<b>(816) 773-8201</b>	<b>(816) 862-6366</b>	
<b>Drexel</b>	<b>(816) 380-5200</b>	<b>(816) 657-2662</b>	
<b>Creighton</b>	<b>(816) 499-2210</b>	<b>(816) 449-2313</b>	
<b>East Lynne</b>	<b>(816) 626-3521</b>	<b>(816) 869-3840</b>	
<b>Strasburg</b>	<b>(816) 866-3911</b>	<b>(816) 540-9108</b>	

## **Adoption / Crisis Pregnancy**

Birthright  
816-444-7090  
800-550-4900 (24 hr line)  
[www.birthright.org](http://www.birthright.org)

Catholic Charities  
816-221-4377  
Toll Free: 1-800-875-4377  
[www.catholiccharities-kcsj.org](http://www.catholiccharities-kcsj.org)

Crisis Pregnancy Center  
763-2020

Family Support Division / Children's Services  
(formerly DFS)  
816-380-3597  
[www.dss.mo.gov](http://www.dss.mo.gov)

LDS Family Services  
800-537-2229  
816-461-5512  
[www.itsaboutlove.org](http://www.itsaboutlove.org)

Life Choice Center for Women - Harrisonville  
816-887-5100  
[www.lifechoicecenter.org](http://www.lifechoicecenter.org)

Mother's Refuge (pregnant and homeless under  
age 20)  
816-356-4797 ext. 2  
[www.mothersrefuge.org](http://www.mothersrefuge.org)

Shiloh Center – Harrisonville  
816-925-4596

The LIGHT House  
816-361-2233  
[www.lighthousekc.org](http://www.lighthousekc.org)

## **Adult Daycare / Respite Care**

Adult Care Health Center of Greater Kansas City  
816-331-6565  
[www.adultcarekc.com](http://www.adultcarekc.com)

Birdella Jackson Senior Care - Grandview  
816- 763-2484

Meadow View Health and Rehabilitation  
- Harrisonville  
816- 380-2622

Visiting Angels (senior homecare)  
800-365-4189

[www.visitingangels.com](http://www.visitingangels.com)

West Central Missouri Community Action  
Agency  
888-569-9936  
[www.wcmcaa.org](http://www.wcmcaa.org)

## **Alcohol / Drug Treatment (Substance Abuse)**

Alcoholics Anonymous – AA  
- Harrisonville  
816-884-2001

Celebrate Recovery Church on the Rock  
- Harrisonville  
816-380-2428

Cass County Psychological Services (C-star  
program, age 18 and over) - Harrisonville  
816-380-4010  
[www.cmhconline.com](http://www.cmhconline.com)

Compass Health Network  
Harrisonville (816-380-5167)  
Raymore (816-318-4430)

Eric A Copeland, PsyD – Harrisonville  
816-380-4010

Fatino Counseling - Harrisonville  
816-361-1582

Life Issues - Harrisonville  
816-380-3003  
free, drug court-approved drug addiction  
recovery program

Greater Kansas City Healthcare Directory  
[www.healthkc.com](http://www.healthkc.com)

National Council on Alcohol and Drug  
Dependence (assessment and referral services)  
816-361-5900  
[www.recoverycentral.org](http://www.recoverycentral.org)

Probation and Parole Office (for referrals)  
816-322-1166

Scott A. Maid Behavioral Health Center, Inc.  
- Harrisonville  
816-884-5777

The Wellness Counseling Center, LLC  
- Harrisonville  
816-974-7378

## **Child Abuse Reporting / Prevention**

Child Abuse / Neglect Hotline  
800-392-3738  
<http://www.dss.mo.gov/cd/can.htm>

Metropolitan Organization to Counter Sexual Assault (therapy for sexually abused children)  
(MO) 816-531-0233 (KS) 913-642-0233  
[www.mocsa.org](http://www.mocsa.org)

National Center for Missing and Exploited Children  
800-843-5678  
913-469-5437  
[www.missingkids.com](http://www.missingkids.com)

## **Children's / Family Medical**

Family Support Division / Children's Services (formerly DFS)  
816-380-3597  
<http://dss.mo.gov/fsd/>

InfantSee (eye exams for infants 6-12 months @ participating providers) - Belton  
816-331-9590  
[www.infantsee.org](http://www.infantsee.org)

Missouri Health Insurance Pool  
1-800-821-2231

Shriners of North America  
800-237-5055  
[www.shriners.com/hospitals](http://www.shriners.com/hospitals)

## **Child Support**

Cass County Family Services Office  
- Harrisonville  
816-380-3597

## **Christmas Assistance**

Angels on Call - Belton  
816-810-0567  
(emphasis on teens and senior citizens)

Fishes and Loaves Food Pantry - Raymore  
816-501-6801  
(must be Cass county resident)  
[www.fishesandloavesfoodpantry.com](http://www.fishesandloavesfoodpantry.com)

Heart & Hand Ministries - Belton  
816-322-1133

(Belton, Raymore, Peculiar residents only – will also provide Thanksgiving assistance)  
[www.heartnhand.org](http://www.heartnhand.org)

The Cass County Toy Shop - Harrisonville  
816-419-1254  
(calls accepted in November)

West Central Missouri Community Action Agency  
Belton 816-322-0502  
Harrisonville 816-380-6690  
[www.wcmcaa.org](http://www.wcmcaa.org)

## **Clothing Assistance**

Fishes and Loaves - Raymore  
816-322-1177  
(must be Cass County resident)  
[www.fishesandloavesfoodpantry.com](http://www.fishesandloavesfoodpantry.com)

Good Shepherd Thrift Store – Garden City  
816-862-6100

Harrisonville Ministerial Alliance - Harrisonville Thrift Store  
816-884-2279

Heart & Hand Ministries - Belton Thrift Store  
816-322-1133  
[www.heartnhand.org](http://www.heartnhand.org)

Pleasant Hill Thrift Store – Pleasant Hill  
816-987-3600  
[www.tlcphill.com](http://www.tlcphill.com)

## **Dental Care**

A World of Smiles - Harrisonville  
816-380-2222  
[www.aworldofsmiles.net](http://www.aworldofsmiles.net)

Belton Family Dental Care - Belton  
816-331-1900  
[www.beltonfamilydentalcare.com](http://www.beltonfamilydentalcare.com)

Belton Modern Dentistry - Belton  
816-322-3506  
[www.beltonmoderndentistry.com](http://www.beltonmoderndentistry.com)

Braces By Billings - Belton  
Billings Steven P DDS  
(816) 331-1902  
[bracesbybillings.com](http://bracesbybillings.com)

Burleson Orthodontics & Pediatric Dentistry  
- Raymore  
(816) 318-8820  
raypecsmiles.com

Cass County Dental Clinic - Belton  
816- 322-7600  
www.casscountydentalclinic.org  
*(ages 1 through 20, accepts Medicaid; sliding  
scale fee for uninsured and underinsured)*

Cass County Smiles - Raymore  
816-331-3456

Custom Dental of Harrisonville  
816-925-0887  
www.harrisonvilledentist.com

David M. Smith, MD - Raymore  
(816) 348-7527  
raymoreoms.com

DDS Dentures + Implant Solutions of Belton  
816-366-7702  
www.dentalservice.net

Edwin Long, DDS - Harrisonville  
816-380-3522  
www.edwinlongdds.com

Foxwood Springs Living Center: Seabaugh  
- Raymore  
Ruth Anne DDS  
(913) 649-1351

Graig Grider PC - Belton  
(816) 246-9995  
griderorthodontics.com

Harmony Smiles Orthodontics - Raymore  
(816) 322-2525  
harmonysmiles.com

Harrisonville Smile & Trust Co. - Harrisonville  
816-887-2008  
harrisonvillesmileandtrust.com

Jacob D. Young, DDS - Belton  
(816) 331-4800  
beltontdentist.com

KC Family Dental Care - Harrisonville  
816-380-3705  
www.kc-familydental.com

Lifetime Dental - Belton  
Steven Dunning, DDS  
816-331-4333  
lifetimedentalkc.com

Lon Tracy, DDS - Harrisonville  
816-380-6000  
www.drlontracy.com

Love to Smile: Complete Family & Implant  
Dentistry - Peculiar  
816-620-2022  
www.love-to-smile.com

Mark A. Anderson, DDS - Belton  
816-425-2158  
www.markandersondds.com

Mary Kay Mitchell DDS Family Dentistry  
- Raymore  
(816) 322-8080  
mkmds.com

Pacific Plains Dental - Belton  
816-331-5900  
www.pacificplainsdental.com

Paul R Mann, DDS - Raymore  
(816) 322-7668

Peculiar Dental Care - Peculiar  
816-779-6500  
www.peculiardentalcare.com

Pleasant Hill Dental Care – Pleasant Hill.  
816-987-7467  
www.dentistpleasanthill.net

Silver Lake Dentistry - Raymore  
Whitford, Joshua E DDS  
(816) 322-2292  
silverlakedentistry.com

Smiles Unlimited LLC - Belton  
McNamara, Kevin DDS  
(816) 331-9100  
beltonsmiles.com

Terry L. Myers, DDS – Mini Dental Implants  
- Belton  
(816) 331-4200  
keystone-dentistry.com

UMKC Dental School  
816-235-2111  
[www.dentistry.umkc.edu](http://www.dentistry.umkc.edu)

### **Disability Services – Adults**

CASCO Area Workshop (age 18 and over  
employment center)  
- Harrisonville  
816-380-7359

Missouri Department of Health and Senior  
Services  
816-350-54338  
<http://health.mo.gov/seniors/index.php>

Missouri Protection and Advocacy Services  
800-393-8667  
[www.moadvocacy.org](http://www.moadvocacy.org)

Social Security Administration  
800-772-1213  
[www.socialsecurity.gov](http://www.socialsecurity.gov)

The Whole Person  
816-561-0304  
800-878-3037  
[www.thewholeperson.org](http://www.thewholeperson.org)

Vocational Rehab  
816-325-1200  
[www.dese.mo.gov](http://www.dese.mo.gov)

### **Disability Services – Children**

CASCO Area Workshop (case  
management/referral services)  
816-380-7359

Down Syndrome Guild of Greater KC  
office: 913-384-4848  
[www.kcdsg.org](http://www.kcdsg.org)

First Steps Program (0-3 years)  
573-522-8762  
[www.dese.mo.gov](http://www.dese.mo.gov)

Heritage Preschool (for special needs children –  
sliding scale) - Harrisonville  
816-380-4604

Kansas City Regional Office (KCRO)  
816-889-3400  
(for early detection of mental retardation and  
developmental disabilities)  
[www.dmh.mo.gov/kcro/](http://www.dmh.mo.gov/kcro/)

### **Local School Districts Special Services Office**

Missouri Department of Elementary and  
Secondary Education  
[www.dese.mo.gov](http://www.dese.mo.gov)

Missouri Department of Health and Senior  
Services  
[www.dhss.mo.gov](http://www.dhss.mo.gov) (A to Z)

Social Security Administration  
800-772-1213  
[www.socialsecurity.gov](http://www.socialsecurity.gov)

The Family Conservancy (childcare referrals for  
special needs children)  
913-342-1110  
[www.thefamilyconservancy.org](http://www.thefamilyconservancy.org)

### **Domestic Violence**

Hope Haven of Cass County - Harrisonville  
(Emergency Shelter and Outreach programs for  
Domestic & Sexual Violence)  
24-Hour Crisis Hotline: 816-380-4663  
Administrative: 816-380-2833  
[www.hopehavenforcasscounty.org](http://www.hopehavenforcasscounty.org)

Hope House for Battered Women  
816-461-8188  
[www.hopehouse.net](http://www.hopehouse.net)  
Missouri Coalition Against Domestic and Sexual  
Violence  
1-800-799-7233  
[www.mocadsv.org](http://www.mocadsv.org)

Rose Brooks Center  
816-861-6100 (Greater Kansas City)  
1-800-779-7233 (National)  
816-523-5550 (Office)

### **Education (Adult)**

Cass Career Center  
380-3253  
[www.casscareercenter.com](http://www.casscareercenter.com)

Independence Adult Education and Literacy  
Program (GED classes in Belton and  
Harrisonville)  
816-521-5507 (press 1 then 5)  
816-521-5300 (school district)  
[www.indep.k12.mo.us](http://www.indep.k12.mo.us)



### **Educational Financial Assistance**

Education Online Search  
[www.education-online-search.com](http://www.education-online-search.com)

Free Application for Federal Student Aid  
1-800-433-3243  
[www.fafsa.ed.gov](http://www.fafsa.ed.gov)

MOSTARS Information Center  
800-473-6757  
[www.mostars.com](http://www.mostars.com)

### **Emergency Assistance**

Community Assistance Council  
660-476-2185

West Central Missouri Community Action Agency  
Belton 816-322-0502  
816-322-0291  
[www.wcmcaa.org](http://www.wcmcaa.org)

### **Emergency Management / Disaster Preparedness**

American Red Cross  
816-380-4271  
(KC) 816-931-8400  
[www.kcredcross.org](http://www.kcredcross.org)

Cass County Emergency Management  
- Harrisonville  
816-380-8125  
[www.casscounty.com](http://www.casscounty.com)

Cass County Health Department - Harrisonville  
816-380-8441

### **Employment and Training**

Full Employment Council / Missouri Career Center  
(Belton) 816-318-3922 (KC) 816-471-2330  
[www.feckc.org](http://www.feckc.org)

Job Corps (age 16-25)  
816-629-3111  
[excelsiorsprings.jobcorps.gov](http://excelsiorsprings.jobcorps.gov)  
Missouri's Workforce Resource  
[www.greathires.org](http://www.greathires.org)

West Central Missouri Community Action Agency

Belton 816-318-3922  
Harrisonville 816-380-6690  
[www.wcmcaa.org](http://www.wcmcaa.org)

### **Family Counseling Services**

Cass County Psychological Services  
- Harrisonville  
816-380-4010

Compass Health Network  
Harrisonville (816-380-5167)  
Raymore (816-318-4430)

Harrisonville Ministerial Alliance - Harrisonville  
(family counseling – reduced rates)  
816-380-3505

The Family Conservancy  
913-342-1110  
[www.thefamilyconservancy.org](http://www.thefamilyconservancy.org)

Turning American Families Around  
913-449-3696  
[www.turningamericanfamiliesaround.org](http://www.turningamericanfamiliesaround.org)

### **Family Support Services**

Family Support Division / Children's Services  
(formerly DFS)  
816-380-3597 OR 1-800-392-1261  
[www.dss.mo.gov](http://www.dss.mo.gov)

Salvation Army  
816-380-3505  
[www.salvationarmyusa.org](http://www.salvationarmyusa.org)

West Central Missouri Community Action Agency  
Belton 816-322-0502  
Harrisonville 816-380-6690  
[www.wcmcaa.org](http://www.wcmcaa.org)

### **Food Assistance**

Cass County Health Department (WIC)  
816-380-8430  
[www.casscountyhealth.com](http://www.casscountyhealth.com)

Cornerstone Community Church  
816-380-2422

Fishes and Loaves - Raymore  
816-322-1177  
(must be Cass County resident)  
[www.fishesandloavesfoodpantry.com](http://www.fishesandloavesfoodpantry.com)

Garden City Ministerial Alliance – Garden City  
816-773-8577  
(Garden City and surrounding area)

Harvesters Community Food Network  
816-929-3000  
www.harvesters.org

Heart & Hand Ministries - Belton  
816-322-1133  
(Belton, Raymore, Peculiar residents only)  
www.heartnhand.org

Pleasant Hill Food Pantry – Pleasant Hill  
816-987-3600  
www.tlcp Hill.com

Salvation Army  
816-966-8300  
www.salvationarmyusa.org

Senior Centers  
(Belton) 816-348-7410  
(Harrisonville) 816-380-8980

Senior meals delivered  
Belton (348-7410)  
Drexel (619-2434)  
Garden City (773-6262),  
Harrisonville (380-8980)  
Pleasant Hill (987-3952)

Shepherd's Staff Food Pantry  
816-380-3043

South Haven Baptist Church  
816-322-0409  
(Belton/Raymore residents by appointment)  
www.southhavenchurch.org

### **Grandparent Support / Kinship Care**

American Association of Retired Persons  
(AARP)  
1-888-687-2277  
1-877-434-7598  
(Spanish): 1-877-342-2277  
www.aarp.org/grandparents

### **Health Care / Urgent Care Clinic**

Archie Medical Clinic  
709 East Pine Street  
Archie, Mo. 64725  
816-430-5777

Direct Family Healthcare  
305 W Wall St Ste A  
Harrisonville, Mo. 64701  
816-793-0071

Drexel Medical Clinic  
210 East Main Street  
Drexel, Mo. 64742  
816-619-3000

Garden City Medical Clinic  
101-B Old 7 Highway  
Garden City, Mo. 64747  
816-773-6203

Harrisonville Family Medicine  
2820 East Rock Haven Road, Suite 100  
Harrisonville Mo. 64701  
816-380-3582

Harrisonville Medical Clinic  
2800 East Rock Haven Road, Suite 210  
Harrisonville, Mo. 64701  
816-380-7470

Kansas City CARE Clinic (adults w/o insurance  
only)  
816-753-5144

Kingsville Medical Clinic  
305 East Pacific Street  
Kingsville, Mo. 64061  
816-597-3500

Mercy and Truth Medical Clinic  
913-248-9965  
www.mercyandtruth.com

Minute Clinic  
CVS Pharmacy  
(Raymore) 1-866-389-2727  
www.minuteclinic.com

Missouri Health Insurance Marketplace  
1-800-318-2596  
www.covermissouri.org  
www.healthcare.gov

Peculiar Medical Clinic  
300 South Main Street  
Peculiar, Mo. 64078  
816-779-1100

Pleasant Hill Medical Clinic  
1601 North Highway 7  
Pleasant Hill, Mo. 64080  
816-540-2111

Raymore Urgent Care  
242 Broadmoor Dr  
Raymore, Mo. 64083  
816-318-1300

Southland Primary Care  
17067 South 71 Highway, Suite 100  
Belton, Mo. 64012  
816-331-4000

St. Luke's Convenient Care – Hy-Vee Belton  
1307 E North Ave  
Belton, Mo. 64012  
816-251-5765

Swope Health Services  
816-599-5170 (Belton MO)  
816-922-1050 (KCMO, Troost)  
816-923-5800 (Central, Blue Parkway, KCMO)  
[www.swopehealth.org](http://www.swopehealth.org)

### **Home Health Care**

American Home Care  
816-728-0975  
816-358-2477

Foxwood Springs - Raymore  
816-331-3111

Home Instead Senior Care – Pleasant Hill  
816-540-2499

Quality Home Care - Harrisonville  
(816) 380-3222

Right at Home - Raymore  
816-535-5183  
[www.rightathome.net](http://www.rightathome.net)

Visiting Nurse Association - Harrisonville  
816- 380-3654  
[www.vnac.com](http://www.vnac.com)

### **Homeless / Transient Services**

Harrisonville Ministerial Alliance  
816-380-3505

City Union Mission  
816-566-5085  
[www.cityunionmission.org](http://www.cityunionmission.org)

Hotline for the Homeless  
816-474-4599

Hope Haven (for domestic violence victims only)  
816-380-4663  
[www.hopehavenofcasscounty.org](http://www.hopehavenofcasscounty.org)

### **Hospice Services**

Crossroads Hospice of KC  
333-9200  
[www.crossroadshospice.com](http://www.crossroadshospice.com)

Heartland Hospice  
816-943-1798 (KCMO)  
660-679-4300 (Butler)

Kansas City Hospice and Palliative Care  
816-363-2600  
[www.kansascityhospice.org](http://www.kansascityhospice.org)

Omega Health Care – Lee's Summit  
816- 268-4130

Serenity Care Hospice - Harrisonville  
816-380-3913  
[www.serenitycares.com](http://www.serenitycares.com)

Twin Lakes Hospice  
(Clinton) 800-328-5446  
[www.twinlakeshospice.com](http://www.twinlakeshospice.com)

### **Hospitals**

Cass Regional Medical Center  
2800 Rock Haven Rd  
Harrisonville, MO 64701  
816-380-3474 OR 816-380-5888  
[www.cassregional.org](http://www.cassregional.org)

Belton Regional Medical Center  
17065 S. 71 Hwy  
Belton, MO 64012  
816-348-1200  
[www.beltonregionalmedicalcenter.com](http://www.beltonregionalmedicalcenter.com)

*Note: Both Cass Regional and Belton Regional offer community education programs and Cass Regional operates family practice clinics throughout the county. Visit their respective websites for further information.*

## Hotlines / Helplines

Alcoholics Anonymous Helpline  
471-7229  
[www.kc-aa.org](http://www.kc-aa.org)

Breast Center at Menorah Medical Center  
913-498-6266  
[www.menorahmedicalcenter.com/service/breast-care](http://www.menorahmedicalcenter.com/service/breast-care)

Child Abuse / Neglect Hotline  
800-392-3738  
(Missouri only)  
[www.dss.mo.gov/cd/can.htm](http://www.dss.mo.gov/cd/can.htm)

Child Support General Information  
800-859-7999

Child Support Payment Enforcement  
800-225-0530

Domestic Violence Hotline  
800-799-7233  
[www.thehotline.org](http://www.thehotline.org)

Elder Abuse / Neglect Hotline  
800-392-0210  
[www.dss.mo.gov](http://www.dss.mo.gov)

Food Stamp Case Information  
800-392-1261  
[www.dss.mo.gov](http://www.dss.mo.gov)

Girls and Boys Town National Hotline  
800-448-3000  
(crisis resource and referral for parents and children)  
[www.boystown.org/hotline](http://www.boystown.org/hotline)

Homeless Hotline  
816-474-4599

Hope Haven Crisis Line (domestic violence)  
816- 380-4663  
816-380-2833  
[www.hopehavenofcasscounty.org](http://www.hopehavenofcasscounty.org)  
Immunization Hotline (for clinic information)  
380-8433

Medicare Info Hotline  
800-MEDICARE  
[www.medicare.gov](http://www.medicare.gov)

Missouri School Violence Hotline  
866-748-7047

[www.schoolviolencehotline.com](http://www.schoolviolencehotline.com)

Narcotics Anonymous Helpline  
800-561-2250  
[www.na.org](http://www.na.org)

National Center for Missing and Exploited Children  
800-843-5678  
[www.missingkids.com](http://www.missingkids.com)

National Runaway Switchboard  
800-786-2929  
[www.1800runaway.org](http://www.1800runaway.org)

Parent Link Warmline  
800-552-8522  
[extension.missouri.edu/parentlink](http://extension.missouri.edu/parentlink)

Poison Control Center  
800-222-1222  
[www.aapcc.org](http://www.aapcc.org)

Research Psychiatric Crisis Line  
816-444-8161  
[www.researchpsychiatriccenter.com](http://www.researchpsychiatriccenter.com)

Royal Oaks Crisis Referral Line (mental health)  
800-456-2634

Sexual Assault Hotline  
800-656-4673

MOCSA 24-Hour Rape Crisis Line  
816-531-0233

Social Security Information  
800-772-1213  
[www.ssa.gov](http://www.ssa.gov)

STD / AIDS Hotline  
800-227-8922

Suicide Prevention Lifeline  
800-273-8255  
[www.suicidepreventionlifeline.org](http://www.suicidepreventionlifeline.org)

United Way Assistance Line  
"211" or 474-5112  
[www.unitedwaygkc.org](http://www.unitedwaygkc.org)

## Housing Assistance / Home Ownership Counseling

West Central Missouri Community Action Agency

660-476-2185  
www.wcmcaa.org

### **Immunizations**

Cass County Health Department  
816-380-8431  
www.casscountyhealth.com

### **Independent Living**

CASCO Area Workshop  
816-380-7359

The Whole Person  
816-627-2220  
www.thewholeperson.org

Heart-n-Hand Ministries Inc.  
L.I.F.T. Programs (Life Instruction for Today)  
322-1133  
www.heartnhand.org  
(Offers free classes in computer, job resume,  
cooking, finances)

### **Legal Aid / Advocacy Services**

Legal Aid of Western Missouri  
816-474-6750  
www.lawmo.org

Missouri Bar Association  
www.mobar.org

Missouri Protection and Advocacy Services (for  
the disabled)  
800-392-8667  
www.moadvocacy.org

### **Libraries**

Main Office  
Harrisonville (816-380-4600)  
www.casscolibrary.org

Satellites  
Archie, 816-293-5579  
Belton, 816-331-0049  
Drexel, 816-657-4740  
Garden City, 816-862-6611  
Pleasant Hill, 816-987-2231  
Bookmobile, 816-258-2244

### **Medical Lodging**

Hope Lodge (American Cancer Society)  
800-227-2345  
www.cancer.org

Ronald McDonald House  
816-842-7033  
www.rmhckc.org

### **Mental Health Services**

Cass County Psychological Services  
- Harrisonville  
816-380-4010

Catholic Charities  
800-875-4377  
www.catholiccharities-kcsj.org

Compass Health Network  
Harrisonville (816-380-5167)  
Raymore (816-318-4430)

Cornerstones of Care (Care for Children)  
816-508-1700  
www.cornerstonesofcare.org

Crittenton Children's Center (Behavioral Health)  
816-765-6600

Crisis Intervention Teams (Law Enforcement  
Crisis Response)  
contact local law enforcement dispatch or 9-1-1  
and ask for CIT Deputy or officer-on-duty

Pathways Community Behavioral Healthcare  
Harrisonville: 816-380- 5167  
Raymore: 816-318-4430  
www.pathwaysonline.org

Research Psychiatric Center  
816-444-8161  
crisis line: 816-235-8162  
www.researchpsychiatriccenter.com

Royal Oaks Hospital  
888-403-1071  
crisis line: 800-456-2634  
www.royal-oaks-hospital.org

Sage Senior Behavioral Health Services (age 55  
and over)  
816-887-0793

## **Nursing Homes**

Beautiful Savior - Belton  
816-331-0781

Benton House of Raymore  
816-322-2111

Carnegie Village - Belton  
816-322-8444

Crown Care Center - Harrisonville  
816-6525

Foxwood Springs - Raymore  
816-331-3111

Golden Years - Harrisonville  
816-380-4731

Pleasant Hill Health and Rehabilitation Center  
816-540-2116

Rehabilitation Center – Raymore  
816-322-1991

## **Optometry**

Advanced Eyecare South  
816-322-1872

Cylinder Optics Inc – Garden City  
816-862-6253

Discover Vision Centers – Harrisonville,  
Raymore  
816-478-1230

Dyer Vision Center - Belton  
816-331-9590

Ginger Cline, OD - Belton  
816-322-6100

Innovative Vision Care - Belton  
816-331-9590  
[www.innovativevisioncare.com](http://www.innovativevisioncare.com)

Raymore Eyecare - Raymore  
816-318-3937  
[www.raymoreeyecare.com](http://www.raymoreeyecare.com)

Sam's Club Optical Center - Raymore  
816-765-0600

Vision Source - Pleasant Hill

816-987-2203

Vision Source - Raymore  
816-892-0046

Walmart Vision & Glasses - Raymore  
816-322-3039

Wendy Parsons, OD - Belton  
816-554-7747

## **Parenting Support / Child Development**

Parents As Teachers  
Contact your local school district

The Family Conservancy  
913-342-1110  
[www.thefamilyconservancy.org](http://www.thefamilyconservancy.org)

University of Missouri Extension  
"Missouri Families" Program  
573-882-7828  
[www.missourifamilies.org](http://www.missourifamilies.org)

University of Missouri Extension  
Parent Link  
800-552-8522  
[www.extension.missouri.edu/parentlink](http://www.extension.missouri.edu/parentlink)

## **Paternity Testing**

DNA Services of America  
800-927-1635  
[www.dnaso.com](http://www.dnaso.com)

## **Pregnancy Testing**

Birthright of Greater KC (free testing)  
800-550-4900  
[www.birthright.org](http://www.birthright.org)

Cass County Health Department  
816-380-8431  
[www.casscountyhealth.com](http://www.casscountyhealth.com)

Life Choice Center for Women  
816-887-5100  
[www.lifechoicecenter.org](http://www.lifechoicecenter.org)

West Central Missouri Community Action  
Agency  
Belton Clinic: 816-322-5012  
Harrisonville Clinic: 888-577-4640  
[www.wcmcaa.org](http://www.wcmcaa.org)

## **Prescription Assistance**

Needy Meds  
800-503-6897  
www.needmeds.com

Community Assistance Council  
816-763-3277  
www.cackc.org

Medications  
Missouri RxPlan  
1-800-375-1406  
www.morx.mo.gov

## **Psychologist**

A Balanced Mind, LLC - Harrisonville  
816-738-1545

Overcomers Counseling Center – Raymore,  
Peculiar  
816-255-5375

Rick D. Thomas, Ph.D - Belton  
816-331-0374

Wecare Counseling - Harrisonville  
816-884-2900

## **School Supplies Assistance K-12**

West Central Community Action Agency  
816-322-0700  
816-322-0502 (Belton, Raymore, Peculiar  
residents)  
816-380-6690 (Harrisonville residents)

## **Senior Services**

Aging Information and Referral  
800-235-5503  
www.dss.mo.gov

Angels on Call  
816-810-0567  
located in Belton

Belton Senior Center  
816-348-7410

Eldercare Locator  
816-474-4240  
www.eldercare.gov

Experience Works, Inc. (employment for  
Seniors)  
877-872-4740  
www.experienceworks.org

Harrisonville Senior Center  
816-380-8980

Meals-on-Wheels  
816-987-3952  
Medications

Missouri RxPlan  
1-800-375-1406  
www.morx.mo.gov

Medicare Info  
1-800-MEDICARE  
www.medicare.gov

Mid America Regional Council (info on aging  
services)  
816-474-4240  
www.marc.org/aging

Missouri Aging Information Network  
www.moaging.com

Missouri Senior Legal Helpline  
www.moaging.com/legalhelp  
1-800-235-5503

Social Security Information  
800-772-1213  
www.ssa.gov

Visiting Angels (senior homecare)  
800-365-4189  
www.visitingangels.com

West Central Missouri Community Action  
Agency (Low Income Housing)  
Belton 816-331-4620  
Raymore 816-331-2959  
Harrisonville 816-380-6833  
www.wcmcaa.org

## **Support Groups**

Alcoholics Anonymous  
816-471-7229  
www.kc-aa.org

Alzheimer's Support Group  
800-272-3900 (24-hour line)  
www.alz.org

COPD Support Group  
816-380-5159  
888-414-5126

Grief Support Group (suicide survivors)  
Pathways  
Raymore, 816-318-4430

Multiple Sclerosis Support Group  
816-478-1578  
Narcotics Anonymous  
800-561-2250  
www.na.org

Solace House (grief support children/adults)  
913-341-0318  
www.solacehouse.org

Survivors of Suicide  
800-273-8255  
www.afsp.org

### **Thrift Stores**

Angels on Call  
816-810-0567  
located in Belton  
(emphasis on teens and senior citizens)

Good Shepherd Thrift Store  
(Garden City) 862-6100

Goodwill Missouri and Kansas  
816-842-7425  
www.mokangoodwill.org

Harrisonville Ministerial Alliance - Harrisonville  
Thrift Store  
816-884-2279

Heart & Hand Ministries - Belton  
816-322-1133  
(Belton, Raymore, Peculiar residents only)  
www.heartnhand.org

Pleasant Hill Thrift Store & Food Pantry  
– Pleasant Hill  
816-987-3600  
www.tlcp Hill.com

### **Transportation**

Kansas City Area Transit Authority  
816-221-0660  
www.kcata.org

OATS  
816-380-7433  
www.oatstransit.org

### **Uninsured Families**

Cass Regional Medical Center (Extended  
payment options) - Harrisonville  
888-233-8825

Family Support/Children's Division (formerly  
DFS)  
816-380-3597

MO HealthNet (formerly MC+)  
888-275-5908  
www.dss.mo.gov

Cover Missouri  
www.covermissouri.com

### **Veteran's Assistance**

Missouri Veterans Commission,  
Harrisonville site  
816-887-5710  
VA Outpatient Clinic, Belton  
816-922-2161

### **Vital Records (birth / death certificates, passports)**

Cass County Health Department (birth / death  
certificates)  
816-380-8425  
www.casscountyhealth.com

### **Women's Health Services**

Building Blocks of Missouri  
816-513-6129  
www.health.mo.gov

Swope Health - Belton  
www.swopehealth.org  
816-599-5170

Greater Kansas City Healthcare Directory  
www.healthykc.org

Kansas City Free Clinic (adults w/o insurance  
only)  
www.kcfree.org

Life Choice Center for Women  
prenatal clinic (accepts Medicaid)



816-887-5100  
[www.lifechoicecenter.org](http://www.lifechoicecenter.org)

Medicaid for Pregnant Women  
Family Support Division and Children's Services  
(formerly DFS)  
816-380-3597

Temporary Medicaid During Pregnancy  
Cass County Health Department  
380-8431

Women's Health Services Clinics  
Belton (322-5012)  
Harrisonville (888-577-4640)  
(sliding scale fees, exams, STD  
testing/treatment, pregnancy testing)  
[www.wcmcaa.org](http://www.wcmcaa.org)

### **Youth Programs**

Boy Scouts  
942-9333  
[www.hoac-bsa.org](http://www.hoac-bsa.org)

Bullying Prevention Information  
[www.eyesonbullying.org](http://www.eyesonbullying.org)

Community Centers  
Belton (348-7400)  
[www.beltonparks.org](http://www.beltonparks.org)  
Harrisonville (380-8980)

[www.ci.harrisonville.mo.us](http://www.ci.harrisonville.mo.us)

4H  
University of Missouri Extension  
380-8460  
[extension.missouri.edu](http://extension.missouri.edu)

Early Headstart (ages 6weeks-3years)  
779-8687  
Girl Scouts  
358-8750  
[www.girlscoutsksmo.org](http://www.girlscoutsksmo.org)

Headstart (ages 3-5 years)  
Belton (322-0004)  
Harrisonville (380-1844)  
[www.wcmcaa.org](http://www.wcmcaa.org)

Lifeguard Youth Development (character-based  
education about high-risk behaviors in youth  
plus resources for parents)  
836-8336  
[www.guardyourself.org](http://www.guardyourself.org)

Safe Sitters Training  
816-654-7966  
[www.kcumb.edu](http://www.kcumb.edu)

Youth Friends  
816-842-7082  
[www.youthfriends.org](http://www.youthfriends.org)

# Health Care Directory

## Physician Clinics

Physician Clinics by specialty by location located in Cass County.

### Primary Care / Family Practice

#### **Archie Medical Clinic**

Darya Mari Collins, NP-C  
Richard Price, MD  
709 East Pine Street  
Archie, Mo. 64725  
(816)430-5777

#### **Direct Family Healthcare**

Marsha Burris, NP  
Renee Endicott, NP  
305 W Wall St Ste A  
Harrisonville, Mo. 64701  
(816)793-0071

#### **Drexel Medical Clinic**

Angelena L Orear, ARNP  
Alberto Suarez, MD  
210 East Main Street  
Drexel, Mo. 64742  
(816)619-3000

#### **Garden City Medical Clinic**

Karmen E Goosey, ARNP, MSN, FNP-BC  
101-B Old 7 Highway  
Garden City, Mo. 64747  
(816)773-6203

#### **Harrisonville Family Medicine**

Christopher David Maxwell, MD  
Jayme L Decker, DO  
Amy Marie Gibbens, FNP  
Shaun B Holden, MD  
Deana M Moore, NP-C  
Jennifer M Ryan, NP  
Aaron L Travis, DO – Internal Medicine

Damon K Travis, DO  
2820 East Rock Haven Road, Suite 100  
Harrisonville Mo. 64701  
(816)380-3582

#### **Harrisonville Medical Clinic**

Heather A Bloesser, DO  
Lisa Nicole Everhart, NP  
Jack Ryan Hudkins, MD  
Melinda M Lacy, FNP-BC  
Richard C Price, MD  
Samuel Dean Brewster, MD  
2800 East Rock Haven Road, Suite 210  
Harrisonville, Mo. 64701  
(816) 380-7470

#### **Kingsville Medical Clinic**

Kristi Ainstine, FNP  
Jolie Chance, DO  
305 East Pacific Street  
Kingsville, Mo. 64061  
(816)597-3500

#### **Peculiar Medical Clinic**

Jackie D Kumm, RN, MSN, FNP-BC  
Molly Rae Urton, NP  
300 South Main Street  
Peculiar, Mo. 64078  
(816)779-1100

#### **Pleasant Hill Medical Clinic**

Jolie R Chance, DO  
Pamela D Davis, DO  
Stephanie R Duarte, RMSN, FNP-BC  
1601 North Highway 7  
Pleasant Hill, Mo. 64080  
(816)540-2111

#### **Southland Primary Care**

Dinesh Joitabhai Patel, MD  
Angela Marie Randle, ARNP  
17067 South 71 Highway, Suite 100  
Belton, Mo. 64012  
(816)331-4000

## **OB/GYN**

### **Midwest Women's Healthcare Specialist**

Belton Regional Medical Center  
17067 South 71 Highway, Suite 200  
Belton, Mo. 64012  
(816)333-5424

### **Midwest Women's Healthcare Specialist**

Cass Regional Medical Center  
Natasha Patel, MD  
2820 East Rock Haven Road, Suite 205  
Harrisonville Mo. 64701  
(816)444-6888

### **Women's Center at Lee's Summit**

2820 East Rock Haven Road, Suite 200  
Harrisonville Mo. 64701  
(816)333-5005

## **Pediatrics**

### **Cass County Pediatrics & Adolescents**

523 North Scott Ave  
Belton, Mo. 64012  
(816)322-4769

## **Specialists**

### **Allergy**

#### **Aggarwal Allergy Clinic**

17067 South 71 Highway, Suite 200  
Belton, Mo. 64012  
(816)525-8400

### **Cardiology**

#### **Midwest Heart and Vascular Specialist**

- 1) 17067 South 71 Highway, Suite 200  
Belton, Mo. 64012  
(816)348-4281
- 2) 2820 East Rock Haven Road, Suite 200  
Carrie Totta, MD  
Jennifer Parris, NP  
Lillard Ashley, MD  
Harrisonville Mo. 64701

(816)380-8088

## **Dermatology**

### **Rock Haven Specialty Clinic**

2820 East Rock Haven Road, Suite 150  
Viseslav Tonkovic-Capin, MD  
Maria Tonkovic-Capin, MD  
Harrisonville Mo. 64701  
(816)887-0312

## **Dialysis Clinics**

### **Dialysis Clinic, Inc**

17045 South 71 Highway  
Belton, Mo. 64012  
(816)322-4034

### **Davita Harrisonville**

308 Galaxie  
Harrisonville, Mo. 64701  
(866)544-6741 ext. 9610

### **Fersenius Kidney Care-Harrisonville**

2820 East Rock Haven Road, Suite 160  
Harrisonville Mo. 64701  
(800)881-5110

## **Ear Nose and Throat**

### **Cass Regional Medical Center-ENT Clinic**

2820 East Rock Haven Road, Suite 220  
Kevin Walls, MD  
Brandon Johnson, MD  
Nicholas Wirtz, MD  
Harrisonville Mo. 64701  
(816)380-2446

### **ENT Associated of Greater KC**

17067 South 71 Highway, Suite 200  
Belton, Mo. 64012  
(816)478-4200

## **Endocrinology**

### **Medical Group of Kansas City**

- 1) 17067 South 71 Highway, Suite 200

Belton, Mo. 64012  
(816)276-7900

- 2) 2820 East Rock Haven Road, Suite 200  
Harrisonville Mo. 64701  
(816)380-8088

### **Gastroenterology**

#### **Belton Regional Medical Center**

17605 South 71 Highway  
Belton, Mo. 64012  
(816)333-5424

#### **Harrisonville Family Medicine**

2820 East Rock Haven Road, Suite 100  
Aaron L Travis, DO  
Harrisonville Mo. 64701  
(816)380-3582

### **General Surgery**

#### **Belton Surgical Associates**

17067 South 71 Highway, Suite 200  
Belton, Mo. 64012  
(816)348-4220

#### **Cass Regional Medical Center**

##### **General Surgery Clinic**

Jack R Hudkins, MD  
Walter Costner, MD  
Clifton Siefert, MD  
2820 East Rock Haven Road, Suite 220  
Harrisonville Mo. 64701  
(816)380-2446

### **Nephrology**

#### **Fresenius Kidney Care Harrisonville Midwest Nephrology Consultants, PA**

2820 East Rock Haven Road, Suite 160  
Harrisonville Mo. 64701  
(816)276-1700

### **Neurology**

#### **Rock Haven Specialty Clinic**

Michael Schwartzman, DO

2820 East Rock Haven Road, Suite 150  
Harrisonville Mo. 64701  
(816)887-0312

#### **Research Neurology Associates**

- 1) 17067 South 71 Highway, Suite 200  
Belton, Mo. 64012  
(816)348-4267
- 2) 2820 East Rock Haven Road, Suite 205  
Iftekhhar Ahmed, MD  
Kenneth Van Owen, MD  
Harrisonville Mo. 64701  
(816)380-8081

### **Oncology**

#### **MidAmerica Cancer Care**

Jaswinder Singh, MD  
Mary Kellam-Upton, NP  
2800 East Rock Haven Drive  
Harrisonville, Mo. 64701  
(816)380-5888 ext. 7880

#### **Sarah Cannon Cancer Center**

17053 South 71 Highway, Ste 204  
Belton, Mo. 64012  
(816)348-1900

#### **Women's Center at Lee's Summit – Harrisonville**

Megan Sneed, MD  
2820 Rock Haven Rd, Suite 200  
Harrisonville, Mo. 64701

### **Ophthalmology**

#### **Cass County Eye Center**

424 East North Avenue  
Belton, Mo. 64012  
(816)322-6100

#### **Rock Haven Specialty Clinic**

Christopher Banning, MD  
Christopher Pole, MD  
2820 Rock Haven Rd, Suite 150  
Harrisonville, Mo. 64701

**Cokington Eye Center**

2820 East Rock Haven Road, Suite 150  
 Harrisonville Mo. 64701  
 (913)491-3737

**Discover Vision Center - Harrisonville**

670 South Commercial Street  
 Harrisonville, Mo. 64701  
 (816)478-1230

**Discover Vision Centers - Raymore**

1018 W Foxwood Dr  
 Raymore, Mo. 64083  
 (816)478-1230

**Orthopedics****Bone and Joint Specialist Physician Group**

- 1) 17067 South 71 Highway, Suite 200  
 Belton, Mo. 64012  
 (816)348-4270
- 2) 2820 East Rock Haven Road, Suite 120  
 Danny Carroll, MD  
 Kimberly Winkley, NP  
 Christopher Rose, PA  
 Harrisonville Mo. 64701  
 (816)348-4270

**Cass Regional Orthopedics**

Kenneth Peterson, DO  
 Tyson Travis, DO  
 2820 East Rock Haven Road, Suite 120  
 Harrisonville Mo. 64701  
 (816)380-7662

**Apex Orthopedics**

17067 South 71 Highway, Suite  
 Belton, Mo. 64012

**Pain Management****SJA Pain Associated**

Cass Regional Medical Center  
 Richard Morgan, MD  
 James Johnson, DO  
 2800 East Rock Haven Road

Harrisonville, Mo. 64701  
 (816)380-5888

**Pain Management Associates**

Belton Regional Medical Center  
 17605 South 71 Highway  
 Belton, Mo. 64012  
 (913)754-2199  
 (816)331-6700

**Plastic Surgery / Hand**

Vik Zadoo, MDT  
 17067 South 71 Highway, Suite 200  
 Belton, Mo. 64012  
 (816)276-9100

**Podiatry****Associated Podiatrists, PA**

17067 South 71 Highway, Suite 200  
 Belton, Mo. 64012  
 (913)321-0522

**Rock Haven Specialty Clinic**

William Cruce, DPM  
 2820 East Rock Haven Road, Suite 150  
 Harrisonville Mo. 64701

**Robert A & Laurel Bondi, DPM**

115 Bradford Lane  
 Belton, Mo. 64102  
 (816)322-3137

**Pulmonology****Kansas City Pulmonary Practice**

17067 South 71 Highway, Suite 200  
 Belton, Mo. 64012  
 (816)348-4267

**Kansas City Pulmonary Practice**

2820 East Rock Haven Road, Suite 120  
 Harrisonville Mo. 64701  
 (816)333-1919

## **Rheumatology**

### **Cass Regional Medical Center**

#### **Specialist Clinic**

Kevin Latinis, MD

2800 East Rock Haven Road

Harrisonville, Mo 64701

(816)380-5888 ext. 7880

## **Urology**

### **Rock Haven Specialty Clinic**

Billy Perry, MD

2820 East Rock Haven Road, Suite 150

Harrisonville Mo. 64701

### **Kansas City Urology Care**

Belton Regional Medical Center

17067 South 71 Highway, Suite 200

Belton, Mo. 64012

(816) 444-5525

## **Wound Care**

### **Cass Regional Medical Center**

#### **Wound Clinic**

Shaum Holden, MD

Walter Costner, MD

William Cruce, DPM

Molly Urton, NP

2820 East Rock Haven Road, Suite 150

Harrisonville Mo. 64701

(816)887-0309

# General Online Healthcare Resources

## Doctors and Dentists--General

[AMA Physician Select: Online Doctor Finder](#) (American Medical Association) [DocFinder](#) (Administrators in Medicine) [Find a Dentist](#) (Academy of General Dentistry) [Find a Dentist: ADA Member Directory](#) (American Dental Association) [Physician Compare](#) (Centers for Medicare & Medicaid Services)

## Hospitals and Clinics--General

[Find a Health Center](#) (Health Resources and Services Administration) [Find a Provider: TRICARE Provider Directories](#) (TRICARE Management Activity) [Hospital Quality Compare](#) (Centers for Medicare & Medicaid Services)

## Doctors and Dentists--Specialists

[ACOG's Physician Directory](#) (American College of Obstetricians and Gynecologists) [ACR: Geographic Membership Directory](#) (American College of Rheumatology) [American College of Surgeons Membership Directory](#) (American College of Surgeons) [American Osteopathic Association D.O. Database](#) (American Osteopathic Association) [ASGE: Find a Doctor](#) (American Society for Gastrointestinal Endoscopy) [Cancer Genetics Services Directory](#) (National Cancer Institute) [Child and Adolescent Psychiatrist Finder](#) (American Academy of Child and Adolescent Psychiatry) [Dystonia: Find a Health Care Professional](#) (Dystonia Medical Research Foundation) [Expert Locator: Immunologists](#) (Jeffrey Modell Foundation) [Find a Dermatologic Surgeon](#) (American Society for Dermatologic Surgery) [Find a Dermatologist](#) (American Academy of Dermatology) [Find a Gastroenterologist](#) (American College of Gastroenterology) [Find a Gynecologic Oncologist](#) (Society of Gynecologic Oncologists) [Find a Hand Surgeon](#) (American Society for Surgery of the Hand) [Find a Hematologist](#) (American Society of Hematology) [Find a Neurologist](#) (American Academy of Neurology) [Find a Pediatric Dentist](#) (American Academy of Pediatric Dentistry) [Find a Pediatrician or Pediatric Specialist](#) (American Academy of Pediatrics) [Find a Periodontist](#) (American Academy of Periodontology) [Find a Physical Medicine & Rehabilitation Physician](#) (American Academy of Physical Medicine and Rehabilitation) [Find a Plastic Surgeon](#) (American Society of Plastic Surgeons) [Find a Podiatrist](#) (American Podiatric Medical Association) [Find a Thyroid Specialist](#) (American Thyroid Association) [Find a Urologist](#) (American Urological Association) [Find an ACFAS Physician](#) (American College of Foot and Ankle Surgeons) [Find an Allergist/Immunologist: Search](#) (American Academy of Allergy, Asthma, and Immunology) [Find an Endocrinologist](#) (Hormone Health Network) [Find an Eye M.D.](#) (American Academy of Ophthalmology) [Find an Interventional Radiologist](#) (Society of Interventional Radiology) [Find an Oncologist](#) (American Society of Clinical Oncology) [Find an Oral and Maxillofacial Surgeon](#) (American Association of Oral and Maxillofacial Surgeons) [Find an Orthopaedic Foot and Ankle MD](#) (American Orthopaedic Foot and Ankle Society) [Find an Otolaryngologist \(ENT\)](#) (American Academy of Otolaryngology--Head and Neck Surgery) [Finding an Eye Care Professional](#) (National Eye Institute) [GI Locator Service](#) (American Gastroenterological Association)

## Other Healthcare Providers

[AMTA's Find a Massage Therapist](#) (American Massage Therapy Association) [Cancer Genetics Services Directory](#) (National Cancer Institute) [Find a Diabetes Educator](#) (American Association of Diabetes Educators) [Find a Genetic Counselor](#) (National Society of Genetic Counselors) [Find a Midwife](#) (American College of Nurse-Midwives) [Find a Nurse Practitioner](#) (American Academy of Nurse Practitioners) [Find a Physical Therapist](#) (American Physical Therapy Association) [Find a Professional: Online Directory of Audiology and Speech-Language Pathology Programs](#) (American Speech-Language-Hearing Association) [Find a Registered Dietitian](#) (Academy of Nutrition and Dietetics) [Find a Therapist](#) (Anxiety Disorders Association of America) [Find an Audiologist](#) (American Academy of Audiology) [Manual Lymphatic Drainage Therapists](#) (National Lymphedema Network) [National Register of Health Service Providers in Psychology](#) (National Register of Health Service Providers in Psychology) [NCCAOM: Find Nationally Certified Practitioners](#) (National Certification Commission for Acupuncture and Oriental Medicine) [Search for an Emergency Contraception Provider in the United States](#) (Princeton University, Office of Population Research)

## Hospitals and Clinics--Specialized

[Accredited Birth Centers](#) (Commission for the Accreditation of Birth Centers) [Alzheimer's Disease Research Centers](#) (National Institute on Aging) [Cystic Fibrosis Foundation: Find a Chapter](#) (Cystic Fibrosis Foundation) [Cystic Fibrosis Foundation: Find an Accredited Care Center](#) (Cystic Fibrosis Foundation) [Dialysis Facility Compare](#) (Centers for Medicare & Medicaid Services) [FDA Certified Mammography Facilities](#) (Food and Drug Administration) [Find a Free Clinic](#) (National Association of Free Clinics) [Find an Indian Health Service Facility](#) (Indian Health Service) [Find Treatment Centers](#) (American Cancer Society) [Genetics Clinic Directory Search](#) (University of Washington) [Locate a Sleep Center in the United States by Zip Code](#) (American Academy of Sleep Medicine) [MDA ALS Centers](#) (Muscular Dystrophy Association) [Mental Health Services Locator](#) (Substance Abuse and Mental Health Services Administration) [NCI Designated Cancer Centers](#) (National Cancer Institute) [Neurofibromatosis Specialists](#) (Children's Tumor Foundation) [Post-Polio Directory 2011: Post-Polio Clinics, Health Professionals, Support Groups](#) (Post-Polio Health International including International Ventilator Users Network) [Spina Bifida Clinic Directory](#) (Spina Bifida Association of America) [Substance Abuse Treatment Facility Locator](#) (Substance Abuse and Mental Health Services Administration) [Transplant Center Search Form](#) (BMT InfoNet) [U.S. NMDP Transplant Centers](#) (National Marrow Donor Program) [VA Health Care Facilities Locator & Directory](#) (Veterans Health Administration) [Where to Donate Blood](#) (AABB) [Where to Donate Cord Blood](#) (National Marrow Donor Program)

## Other Healthcare Facilities and Services

[Alzheimer's Disease Resource Locator](#) (Fisher Center for Alzheimer's Research Foundation) [American College of Radiology Accredited Facility Search](#) (American College of Radiology) [APA District Branch / State Association Directory](#) (American Psychiatric Association) [Directory of Organizations \(Deafness and Communication Disorders\)](#) (National Institute on Deafness and Other Communication Disorders) [Dog Guide Schools in the United States](#) (American Foundation for the Blind) [Eldercare Locator](#) (Dept. of Health and Human Services) [Find a Hospice or Palliative Care Program](#) (National Hospice and Palliative Care Organization) [Find Services \(for People with Vision Loss\)](#) (American Foundation for the Blind) [Find Urgent Care Centers by State](#) (Urgent Care Association of America) [Genetic Testing Laboratory Directory](#) (University of Washington) [Home Health Compare](#) (Centers for Medicare & Medicaid Services) [Medicare: Helpful Contacts](#) (Centers for Medicare & Medicaid Services) [Muscular Dystrophy Association Clinics and Services](#) (Muscular Dystrophy Association) [National Foster Care and Adoption Directory Search](#) (Children's Bureau) [Nursing Home Compare](#) (Centers for Medicare & Medicaid Services) [Organizations That Offer Support Services](#) (National Cancer Institute) [Poison Control Centers](#) (American Association of Poison Control Centers) [Resources and Information for Parents about Braille](#) (American Foundation for the Blind) [State-Based Physical Activity Program Directory](#) (Centers for Disease Control and Prevention) [TSA Chapters in the USA](#) (Tourette Syndrome Association) [Violence against Women: Resources by State](#) (Dept. of Health and Human Services, Office on Women's Health) [Where to Find Hair Loss Accessories and Breast Cancer Products](#) (American Cancer Society)

**SOURCE:** MedlinePlus provides links to directories to help you find libraries, health professionals, services and facilities. National Library of Medicine (NLM) does not endorse or recommend the organizations that produce these directories, nor the individuals or organizations that are included in the directories.



# V. Detail Exhibits


---


[VVV Consultants LLC]


---

## a) Patient Origin Source Files

[VVV Consultants LLC]

		Patient Origin by Region - Inpatient																	
		Cass, MO Residents Treated in HIDI Reporting Area																	
		Federal Fiscal Year: 2018																	
		Total		Pediatric		Adult Medical/Surgical								Psychiatric		Obstetric		Newborn	
Discharges	Age 0 - 17	Age 18 - 44	Age 45 - 64	Age 65 - 74	Age 75+	Psychiatric	Obstetric	Newborn	Cases	%	Cases	%	Cases	%	Cases	%			
Hospital	Cases	%	Cases	%	Cases	%	Cases	%	Cases	%	Cases	%	Cases	%	Cases	%	Cases	%	
<b>Hospital Total</b>	<b>14,046</b>	<b>100.0%</b>	<b>564</b>	<b>4.0%</b>	<b>1,233</b>	<b>8.8%</b>	<b>3,258</b>	<b>23.2%</b>	<b>2,268</b>	<b>16.1%</b>	<b>3,211</b>	<b>22.9%</b>	<b>1,169</b>	<b>8.3%</b>	<b>1,221</b>	<b>8.7%</b>	<b>1,122</b>	<b>8.0%</b>	<b>24.7%</b>
Research Medical Center - Kansas Ci	2,495	17.8%	8	0.3%	257	10.3%	592	23.7%	384	15.4%	502	20.1%	383	15.4%	195	7.8%	174	7.0%	25.3%
Belton Regional Medical Center - Belt	2,394	17.0%	1	0.0%	259	10.8%	659	27.5%	492	20.6%	933	39.0%	45	1.9%	5	0.2%	0		20.4%
Saint Luke's East Hospital - Lees Sun	1,655	11.8%	4	0.2%	95	5.7%	315	19.0%	261	15.8%	371	22.4%	6	0.4%	311	18.8%	292	17.6%	20.8%
Menorah Medical Center - Overland P	780	5.6%	2	0.3%	40	5.1%	236	30.3%	153	19.6%	145	18.6%	3	0.4%	103	13.2%	98	12.6%	44.5%
Cass Regional Medical Center - Harris	755	5.4%	1	0.1%	59	7.8%	207	27.4%	155	20.5%	286	37.9%	47	6.2%	0		0		20.3%
University of Kansas Health System -	734	5.2%	10	1.4%	104	14.2%	216	29.4%	133	18.1%	116	15.8%	111	15.1%	25	3.4%	19	2.6%	30.0%
Lee's Summit Medical Center - Lees S	716	5.1%	0		89	12.4%	227	31.7%	199	27.8%	193	27.0%	8	1.1%	0		0		24.7%
St. Joseph Medical Center - Kansas C	696	5.0%	0		65	9.3%	214	30.7%	134	19.3%	276	39.7%	6	0.9%	1	0.1%	0		20.8%
Saint Luke's Hospital of Kansas City	602	4.3%	1	0.2%	63	10.5%	162	26.9%	118	19.6%	131	21.8%	8	1.3%	62	10.3%	57	9.5%	36.2%
Children's Mercy Kansas City - Kans	391	2.8%	364	93.1%	6	1.5%	0		0		0		7	1.8%	7	1.8%	7	1.8%	25.1%
Overland Park Regional Medical Cent	377	2.7%	37	9.8%	19	5.0%	60	15.9%	25	6.6%	32	8.5%	0		104	27.6%	100	26.5%	25.5%
Truman Medical Center Lakewood - K	369	2.6%	5	1.4%	15	4.1%	25	6.8%	13	3.5%	6	1.6%	17	4.6%	146	39.6%	142	38.5%	19.0%
AdventHealth Shawnee Mission - Sha	327	2.3%	1	0.3%	38	11.6%	69	21.1%	21	6.4%	27	8.3%	45	13.8%	65	19.9%	61	18.7%	31.5%
Saint Luke's South - Overland Park, K	290	2.1%	0		15	5.2%	63	21.7%	61	21.0%	68	23.4%	1	0.3%	41	14.1%	41	14.1%	30.7%
Centerpoint Medical Center - Indepen	223	1.6%	0		20	9.0%	53	23.8%	34	15.2%	28	12.6%	5	2.2%	43	19.3%	40	17.9%	35.0%
Truman Medical Center Hospital Hill -	185	1.3%	1	0.5%	32	17.3%	31	16.8%	3	1.6%	4	2.2%	33	17.8%	48	25.9%	33	17.8%	21.6%

 HOSPITAL INDUSTRY DATA INSTITUTE		Patient Origin by Region - Inpatient																		
		Cass, MO Residents Treated in HIDI Reporting Area																		
		Federal Fiscal Year: 2017																		
		Total Discharges		Pediatric		Adult Medical/Surgical										Psychiatric		Obstetric		New born
Cases	%	Cases	%	Age 0 - 17	Age 18 - 44	Age 45 - 64	Age 65 - 74	Age 75+	Cases	%	Cases	%	Cases	%	Cases	%	Cases	%		
<b>Hospital Total</b>	13,462	100.0%	575	4.3%	1,264	9.4%	3,065	22.8%	2,178	16.2%	3,012	22.4%	1,141	8.5%	1,155	8.6%	1,072	8.0%	23.9%	
Research Medical Center - Kansas C	2,324	17.3%	7	0.3%	233	10.0%	567	24.4%	324	13.9%	451	19.4%	431	18.5%	166	7.1%	145	6.2%	23.1%	
Belton Regional Medical Center - Bel	2,138	15.9%	3	0.1%	248	11.6%	603	28.2%	474	22.2%	778	36.4%	30	1.4%	2	0.1%	0		21.4%	
Saint Luke's East Hospital - Lees Sun	1,550	11.5%	1	0.1%	131	8.5%	272	17.5%	221	14.3%	336	21.7%	7	0.5%	299	19.3%	283	18.3%	18.9%	
University of Kansas Health System -	817	6.1%	15	1.8%	97	11.9%	222	27.2%	191	23.4%	124	15.2%	114	14.0%	29	3.5%	25	3.1%	32.8%	
St. Joseph Medical Center - Kansas C	817	6.1%	0		81	9.9%	233	28.5%	152	18.6%	328	40.1%	11	1.3%	5	0.6%	7	0.9%	19.8%	
Cass Regional Medical Center - Harri	704	5.2%	0		46	6.5%	198	28.1%	152	21.6%	265	37.6%	43	6.1%	0		0		19.5%	
Menorah Medical Center - Overland P	674	5.0%	0		54	8.0%	176	26.1%	124	18.4%	152	22.6%	5	0.7%	84	12.5%	79	11.7%	37.5%	
Saint Luke's Hospital of Kansas City	651	4.8%	2	0.3%	67	10.3%	166	25.5%	146	22.4%	123	18.9%	5	0.8%	75	11.5%	67	10.3%	37.6%	
Lee's Summit Medical Center - Lees S	602	4.5%	1	0.2%	61	10.1%	193	32.1%	141	23.4%	200	33.2%	6	1.0%	0		0		28.1%	
Children's Mercy Kansas City - Kans	394	2.9%	375	95.2%	5	1.3%	0		0		0		2	0.5%	6	1.5%	6	1.5%	24.4%	
Overland Park Regional Medical Cent	381	2.8%	16	4.2%	31	8.1%	60	15.7%	33	8.7%	37	9.7%	1	0.3%	106	27.8%	97	25.5%	28.1%	
Truman Medical Center Lakewood - K	322	2.4%	0		17	5.3%	19	5.9%	11	3.4%	7	2.2%	37	11.5%	122	37.9%	109	33.9%	10.6%	
Saint Luke's South - Overland Park, K	311	2.3%	0		21	6.8%	62	19.9%	53	17.0%	64	20.6%	1	0.3%	55	17.7%	55	17.7%	28.9%	
AdventHealth Shawnee Mission - Sha	293	2.2%	1	0.3%	28	9.6%	42	14.3%	26	8.9%	14	4.8%	37	12.6%	71	24.2%	74	25.3%	26.6%	
Centerpoint Medical Center - Indepen	230	1.7%	1	0.4%	42	18.3%	56	24.3%	28	12.2%	37	16.1%	1	0.4%	33	14.3%	32	13.9%	30.4%	
Truman Medical Center Hospital Hill -	208	1.5%	5	2.4%	35	16.8%	40	19.2%	6	2.9%	2	1.0%	38	18.3%	45	21.6%	37	17.8%	26.9%	

 <b>HIDI</b> <small>HOSPITAL INDUSTRY DATA INSTITUTE</small>		<b>Patient Origin by Region - Inpatient</b> Cass, MO Residents Treated in HIDI Reporting Area Federal Fiscal Year: 2016																				
		Total Discharges		Pediatric		Adult Medical/Surgical										Psychiatric		Obstetric		New born		Surg %
		Cases	%	Cases	%	Age 18 - 44		Age 45 - 64		Age 65 - 74		Age 75+		Cases	%	Cases	%	Cases	%			
						Cases	%	Cases	%	Cases	%	Cases	%							Cases	%	
<b>Hospital Total</b>	<b>13,335</b>	<b>100.0%</b>	<b>507</b>	<b>3.8%</b>	<b>1,228</b>	<b>9.2%</b>	<b>2,942</b>	<b>22.1%</b>	<b>2,109</b>	<b>15.8%</b>	<b>3,024</b>	<b>22.7%</b>	<b>1,179</b>	<b>8.8%</b>	<b>1,229</b>	<b>9.2%</b>	<b>1,117</b>	<b>8.4%</b>	<b>24.8%</b>			
Research Medical Center - Kansas C	2,314	17.4%	8	0.3%	207	8.9%	519	22.4%	352	15.2%	428	18.5%	475	20.5%	177	7.6%	148	6.4%	22.8%			
Belton Regional Medical Center - Bel	2,049	15.4%	2	0.1%	258	12.6%	572	27.9%	419	20.4%	770	37.6%	26	1.3%	2	0.1%	0		21.4%			
Saint Luke's East Hospital - Lees Sur	1,406	10.5%	6	0.4%	101	7.2%	227	16.1%	166	11.8%	292	20.8%	10	0.7%	310	22.0%	294	20.9%	19.0%			
St. Joseph Medical Center - Kansas C	1,030	7.7%	4	0.4%	66	6.4%	238	23.1%	200	19.4%	311	30.2%	9	0.9%	107	10.4%	95	9.2%	24.5%			
Cass Regional Medical Center - Harris	868	6.5%	7	0.8%	57	6.6%	236	27.2%	177	20.4%	331	38.1%	60	6.9%	0		0		20.6%			
Menorah Medical Center - Overland P	708	5.3%	2	0.3%	70	9.9%	188	26.6%	140	19.8%	196	27.7%	5	0.7%	57	8.1%	50	7.1%	39.1%			
University of Kansas Health System -	686	5.1%	30	4.4%	102	14.9%	179	26.1%	170	24.8%	97	14.1%	75	10.9%	18	2.6%	15	2.2%	36.0%			
Saint Luke's Hospital of Kansas City	628	4.7%	2	0.3%	76	12.1%	155	24.7%	118	18.8%	118	18.8%	3	0.5%	80	12.7%	76	12.1%	37.1%			
Lee's Summit Medical Center - Lees S	617	4.6%	0		52	8.4%	190	30.8%	142	23.0%	224	36.3%	9	1.5%	0		0		25.0%			
AdventHealth Shawnee Mission - Sha	336	2.5%	0		32	9.5%	53	15.8%	36	10.7%	21	6.3%	31	9.2%	83	24.7%	80	23.8%	34.8%			
Overland Park Regional Medical Cent	322	2.4%	6	1.9%	23	7.1%	50	15.5%	29	9.0%	31	9.6%	0		93	28.9%	90	28.0%	28.6%			
Children's Mercy Kansas City - Kans	318	2.4%	297	93.4%	13	4.1%	0		0		0		4	1.3%	2	0.6%	2	0.6%	28.6%			
Saint Luke's South - Overland Park, K	311	2.3%	0		19	6.1%	55	17.7%	30	9.6%	73	23.5%	0		71	22.8%	63	20.3%	26.7%			
Truman Medical Center Lakewood - K	290	2.2%	4	1.4%	16	5.5%	17	5.9%	5	1.7%	13	4.5%	29	10.0%	110	37.9%	96	33.1%	14.8%			
Centerpoint Medical Center - Indepe	216	1.6%	0		26	12.0%	67	31.0%	21	9.7%	26	12.0%	2	0.9%	36	16.7%	38	17.6%	36.6%			
Truman Medical Center Hospital Hill -	195	1.5%	2	1.0%	34	17.4%	42	21.5%	8	4.1%	8	4.1%	42	21.5%	35	17.9%	24	12.3%	24.6%			

---

## b) Town Hall Attendees, Notes, & Feedback

[VVV Consultants LLC]



**Cass Regional - Cass County, MO CHNA Town Hall 9/19/19 5:30-7:00pm N=31**

Attend	Last Name	First Name	Organization	Title	City	ST	ZIP
1	Bosley	Robert	ACI Boland	Senior Associate	RAYMORE	MO	64083
1	Bowman	Judy	City of Harrisonville	Mayor	Harrisonville	MO	64701
1	Cardenas	Samantha	Hope Haven	Assistant Director	Harrisonville	MO	64701
1	Catron	Amy	Cass Regional Medical Center	Board Member	Harrisonville	MO	64701
1	Czech	Sarah	Cass County Health Department	Health Education	Harrisonville	MO	64701
1	Douglass	Billy	HCA	Sr VP Business Development	Overland Park	KS	66211
1	Doolittle	Edith	Community Member	Retired	Belton	MO	64012
1	Gladden	Jenny	Cass County WIC	WIC Coordinator	Harrisonville	MO	64701
1	Grose	Kathi	Compass Health Network, Inc.	Director of Outpatient Services	Raymore	MO	64082
1	Hofmann	Michelle	Raymore-Peculiar School District	Director of Elementary Education	Peculiar	MO	64078
1	Johnson	Jerald	Cass Regional Medical Center	Board of Trustees	Belton	MO	64012
1	Karnes	Alissa	Pathways Community Behavioral Health	Vice President of Operations	Raymore	MO	64083
1	Kroenke	Cricket	Cass Regional Foundation Board	Board Member	Harrisonville	MO	64701
1	Kurzweil	Chris	Cass Regional Medical Center	Board Member	Harrisonville	MO	64701
1	Lang	J. Christopher	Cass Regional Medical Center	Ceo	Harrisonville	MO	64701
1	Mensching	Paul	Harrisonville R-IX Schools	Superintendent	Harrisonville	MO	64701
1	Murphy	Andrea	Serenity Care Hospice	Nurse Liaison	Harrisonville	MO	64701
1	Neumann	Jenna	Hope Haven	Executive Director	Harrisonville	MO	64701
1	Nyberg	Kirsten	HCA	Director Physician Relations / Bus Dev	Overland Park	KS	66211
1	Prenger	Jayne	Integrity Home Care & Hospice	Home Care Navigator	Columbia	MO	65202
1	Prough	Amanda	Cass County Health Department	Director	Harrisonville	MO	64701
1	Santiago	Lida	Compass Health Network	Director of Outpatient Services	Harrisonville	MO	64701
1	Schimmelpfenning	Bing	Harrisonville Chamber of Commerce	Executive Director	Harrisonville	MO	64701
1	Selky	Kathy	Serenity Care Hospice	Clinical Director	Harrisonville	MO	64701
1	Sexton	Brittney	Cass Regional Medical Center	Marketing & Outreach Coordinator	Harrisonville	MO	64701
1	Sims	Kelley	Compass Health	NW CPRC Director	Raymore	MO	64083
1	Smith	Laurence	Reece & Nichols, Smith Realty		Harrisonville	MO	64701
1	Vallee	Marie L	Community Member	Retired Teacher	Harrisonville	MO	64701
1	Warren	Kara	Integrity Home Care & Hospice	Care Supervisor	Columbia	MO	65202
2	Wiseman	Toni / Sonny	Cass Regional Medical Center	Trustee	Harrisonville	MO	64701

## Cass Regional Medical Center – Cass County, MO CHNA Town Hall Notes

Thursday, Sept 19<sup>th</sup>, 2019 5:30-7:00pm N=31

Drexel: ½ Cass Co and ½ Bates Co (South or North of School)

RWJ: Physical Environment – very high score (There are many older houses in Cass Co)

South Cass is declining (in population) compared to North Cass

Many Hispanics in Cass Co

Limited access to healthy foods – some grocery stores are 15 miles away

School nurses: 5 in Harrisonville, 11 Raymore-Peculiar

Drugs: Opioids, Meth, Heroin, Marijuana, Adderall, Xanax, (Vaping)

Homelessness is a problem

New things happening: Election coming up

### Strengths:

- Tobacco 21 rules in 3 communities: Belton, Raymore and Peculiar
- REACH Foundation
- Economic indicators are favorable
- Cass Regional Medical Center
- Adopted St Louis County Prescription Drug Monitoring Program
- Drug Courts
- Community Centers
- Hospice Care
- Health Dept Educational & WIC Programs
- Rural Health Clinics
- Dental Clinics
- Food Bank / Ministerial Alliance
- Population Growth
- Low Medicaid

### Things to Improve:

- Primary Care
- Mental Health
- Domestic Violence
- Homelessness
- Maternal and Child Health
- STD testing and treatment
- Apathy- owning your own health
- Dental Care – poverty level
- Senior care staffing
- Suicides
- Lack of HC county-wide coalition
- Chronic Disease management
- Smoking – vaping
- Urgent Care
- Awareness of HC Services
- HC Transportation
- In-school clinics / healthcare
- Women's Health / family planning



# Wave #3 CHNA - Cass Regional Medical Center

## Town Hall Conversation - Strengths (Color Cards) N= 31

Card #	C1	Today: What are the strengths of our community that contribute to health?	Card #	C1	Today: What are the strengths of our community that contribute to health?
9	ACC	Access points and provider that are here within county vs other rural areas	2	FAC	Numerous LTC facilities
18	ACC	Access to hospital CRMC	5	FIT	Access to exercise places
18	ACC	Access to KC metro via interstate access	2	FIT	Access to fitness
10	ACC	Most of the county's doctors are in our community	4	FIT	Exercise facilities are available - H. Ville Community Center - yoga
15	ACC	Narcan is accessible to first responders that have been trained at no cost	4	HOSP	Cass Medical Center - specialist in clinic and strong ER
7	ACC	Specialty coverage good for CAH	10	HOSP	Great hospital
26	AGE	Home care services available to seniors in the Cass County area	17	HOSP	Hospital services - ED Phys, Cardiologist, Surgeries
8	AGE	Senior food program	17	HOSP	Hospital services - Radiology Lab
27	BH	Behavioral health providers - Compass Health has placed therapists in the schools - Medicaid funded	21	HOSP	Hospital support
24	BH	Comprehensive behavioral health services	7	HOSP	Hospitals
10	BH	Good number of mental health offices	20	HOSP	Large hospital with rural health
13	BH	Mental health services - North Cass	8	HOSP	Two hospitals
23	BH	Open access hours to mental health (8am-5pm)	26	HSP	66.2% hospice
24	BH	Same day access for behavioral healthcare	2	HSP	Hospice care
27	BH	We have behavioral health providers to treat substance use , mental health	4	HSP	Hospice care
5	CLIN	Clinics	3	HSP	Local hospice care (H. Ville)
2	CLIN	CRMC - all clinics/ER/physicians/community clinics	12	INSU	Insurance
28	CLIN	Have 6 clinics (rural) that see patients for hospital	26	INSU	Medicaid low - 13.1%
1	COMM	Staff - communication	19	KID	Cass County babies
6	CORP	Communities that are willing to work together	13	NUTR	Access to healthy food - North Cass
23	CORP	Community leaders interested in making change	2	NUTR	Food bank
2	CORP	Community willing to work together	7	NUTR	Food bank / ministerial alliance
5	CRIT	Critical care	16	NUTR	Public outreach on food
6	DENT	Cass County dental clinic	22	OTHR	Breastfeeding support
5	DENT	Dental	15	PART	Adoption of the St. Louis PDMP
14	DENT	Dental	24	PART	Availability for community funding (Reach Healthcare Foundation, Healthcare Foundation)
21	DENT	Dental	11	PART	County --> PDMP --> St. Louis Adoption
29	DENT	Dental care	2	PART	Ministerial alliance
22	DENT	Dental clinic	15	PART	Partnerships and coalition building is occurring and progressing well
18	DENT	Dental clinic for uninsured and underinsured	20	PART	Strong community coalitions
2	DENT	Dental clinics	1	PART	Working with other healthcare programs
8	DENT	Dental clinics	2	PHARM	Good pharmacies
28	DENT	Dental clinics - to see all children	1	PHARM	Patient assistance
7	DENT	Dental program for kids	6	PHARM	Patient assistance at local hospitals
12	DENT	Dentists	21	PREV	Access to preventative care & services
4	DENT	Free dental care to children and teens - dental screening in all Cass Co. school but not every grade level	5	QUAL	Quick response - in/out
16	DENT	Free dental clinic - combined with public generosity	25	QUAL	Same day services for MH/SUD
19	DENT	Improved dental	8	REC	Community centers

# Wave #3 CHNA - Cass Regional Medical Center

## Town Hall Conversation - Strengths (Color Cards) N= 31

Card #	C1	Today: What are the strengths of our community that contribute to health?	Card #	C1	Today: What are the strengths of our community that contribute to health?
23	DENT	Increased access to dental care	22	REC	Community centers
25	DOCS	Quality providers available in larger towns	20	SAFE	Safe community
2	DOH	Health department	12	SNUR	School nurses in North Cass
11	DOH	Health department has strong educational programs	6	SPEC	Access to a variety of specialists
17	DOH	Health department services / WIC	1	SPEC	Adding specialists as possible
4	DOH	Health department staff - more WIC, free vaccinations	28	SPEC	Many unknown specialists at our hospital - we have nurse practitioners at our offices - make quick appts.
10	DOH	Local health department	15	TOB	Larger communities adopting Tobacco 21
15	DOH	The health department has strong educational programs that are reaching our underinsured population	8	TOB	Tobacco - can't sell unless 21 years old
14	DOH	WIC	11	TOB	Tobacco - 21
21	DOH	WIC	13	URG	Urgent care - North Cass
22	DOH	WIC providers	11	URG	Urgent care good in Mid & North Cass
8	DRUG	Drug court	12	URG	Urgent care in North Cass
21	ECON	Economic indicator - mostly favorable	14	VACC	Vaccination accessibility
20	EDU	Proactive schools	13	VIO	Access to domestic sexual violence grants for rural communities
25	EDU	Quality education provided to youth and MH/SUD services provided in several school districts	8	VIO	H. Ville has a women's shelter
24	EDU	School based therapists (licensed MH clinicians) in many school districts	16	WELL	Community activities
23	EDU	School based therapy programs available	1	WELL	Programs regarding health
27	EDU	School district administrators are problem solving and seeking services for students & families	25	WELL	Smaller programs are successful - example: drug courts
12	EMER	ER availability			

# Wave #3 CHNA - Cass Regional Medical Center

## Town Hall Conversation - Weakness (Color Cards) N= 31

Card #	C1	Today: What are the weaknesses of our community that contribute to health?	Card #	C1	Today: What are the weaknesses of our community that contribute to health?
8	ACC	In school access to the healthcare	18	OBG	Lack of OB/GYN services
5	AGE	Aging related services	24	OBG	OB doctors
8	AGE	Elder care/facilities	5	OBG	OBGYN / women's health
13	AGE	More education on services for senior citizens	28	PEDS	Access to pediatric care
27	AGE	Senior programs	18	PEDS	Lack of pediatricians
5	BH	Access to mental health providers and services	1	PEDS	Need Peds provider
11	BH	After hours assistance for mental health and urgent care for health needs	22	PEDS	Pediatric coverage
21	BH	Availability of mental health care (insured or not)	15	POV	Homeless shelters
22	BH	Easy access to mental health/suicide	17	POV	Homeless shelters
18	BH	Lack of affordable and accessible mental health services	2	POV	Homelessness
17	BH	Lack of patient mental health access especially outpatient	7	POV	Homelessness
26	BH	Mental health	22	POV	Homelessness
3	BH	Mental health	28	POV	Homelessness
7	BH	Mental health	18	POV	Lack of services for homeless population
23	BH	Mental health access and services	12	POV	Polarization with north & south side communities
24	BH	Mental healthcare	25	POV	Poverty level - families
25	BH	Mental health easy access - diagnosis, treatment, and aftercare	22	PREV	Decrease in participation in preventative health
27	BH	Mental healthcare	23	PREV	Preventative health
28	BH	Mental healthcare	5	PRIM	Access to more PCPs
17	CHRON	Chronic disease management	6	PRIM	Access to PCP/VCC
5	CLIN	School-based clinic	8	PRIM	More doctors - primary care physicians
21	COMM	Communications between healthcare and other specialists/care providers to work together	16	PRIM	Primary care
14	CORP	Create a community coalition that is sustainable	10	QUAL	Better understanding of individuals at our hospital
17	CORP	Lack of defined entity to lead the health improvement change	18	SMOK	Lack of smoking ban in public spaces
25	DENT	Access to dental care for adults in poverty	2	SMOK	Vaping - awareness, education
16	DENT	Access to dentists - low income	19	SMOK	Vaping - smoking and chewing tobacco
17	DOCS	Distorted healthcare providers/system	16	SMOK	Vaping - youth
13	DOCS	Need more local docs	23	SMOK	Vaping/smoking prevention cessation
23	DOH	Health department services at risk	4	SPEC	Increase in providers (PC, mental/behavioral, OB)
18	DOH	Lack of funding for local health department	6	SPEC	More specialists - primary to care for the chronic conditions
3	DRUG	Drug abuse	25	STAFF	Long term care staff quality
7	DRUG	Drug addiction	4	STD	Availability to access STI testing services
2	DRUG	Drug addiction - other than criminal system	18	STD	Lack of low cost/no cost STI testing and treatment
10	DRUG	Drug enforcement	3	STD	STD testing
22	DRUG	Drug epidemic	5	STD	STI rates are concerning - testing & treatment
26	DRUG	Drug use	26	SUIC	Suicide
5	DRUG	Drug/substance abuse programs that are preventative and therapeutic- especially for the youth	5	SUIC	Suicide prevention
15	DRUG	Drugs	27	SUIC	Suicide prevention

# Wave #3 CHNA - Cass Regional Medical Center

## Town Hall Conversation - Weakness (Color Cards) N= 31

Card #	C1	Today: What are the weaknesses of our community that contribute to health?	Card #	C1	Today: What are the weaknesses of our community that contribute to health?
11	DRUG	Increase access to drug treatment and community programs & education	28	SUIC	Suicide prevention
28	DRUG	Opioid /drug issues	2	SUIC	Suicide prevention - teens
23	DRUG	Opioid abuse/substance abuse	14	TRANS	Access to public transportation - affordable
18	ECON	With growth of community, county infrastructure needs to grow as well	9	TRANS	Expand Medicaid transport or public transportation options
9	FAM	Access to family planning services & STI services	7	TRANS	Health care transportation
3	FAM	Family planning	25	TRANS	Healthcare transportation
26	FINA	Cost of health care	10	TRANS	More transportation
22	FIT	Affordable access to gyms	2	TRANS	Transportation
8	FIT	Gyms are not affordable	5	TRANS	Transportation
5	HOUS	Affordable housing	27	TRANS	Transportation
9	HOUS	Affordable housing	17	TRANS	Transportation - to improve access
12	HOUS	Affordable housing	21	TRANS	Transportation (healthcare and town to town)
14	HOUS	Availability to access low income housing	12	TRANS	Transportation barriers (South --> North)
11	HOUS	Emergency housing options in county	1	TRANS	Transportation for those who do not have it - perhaps public transportation
2	HOUS	Housing	11	TRANS	Transportation options for community resources
21	HOUS	Housing availability	13	TRAV	49% of residents travel out of the county for work
10	HOUS	More senior housing - affordable	16	TRAV	Commute
9	INSU	Assistance for uninsured individuals to participate in MH/SUD services	1	TRAV	Too many people commute
7	INSU	Constantly changing health coverage	5	URG	Access to after hours Urgent Care
21	KID	Childcare availability	25	URG	No urgent care available in Harrisonville and SouthMart- travel to Belton or Raymore
9	LANG	Bilingual services available	15	URG	Urgent care
22	LTC	Pay to LTC workers - maternal and child health	8	URG	Urgent care - minute clinic
23	MAT	Maternal child health care	22	URG	Urgent care availability
20	MRKT	Get the overall information out the community of what is available & where to get better transportation	24	URG	Urgent care in South Cass
12	MRKT	Lack of knowledge about community resources	19	VIO	Abusive - physical and mental
14	MRKT	Lack of knowledge of services available	14	VIO	Domestic violence shelters
15	NUTR	Access to healthy foods	18	VIO	Lack of domestic abuse shelters and resources
24	NUTR	Access to healthy foods - less emphasis on fast food	15	VIO	Violence/abuse - we need more awareness and grant money but Jackson County gets most of the dollars
5	OBES	Obesity	5	VIO	Women/children domestic violence shelters
7	OBES	Obesity	17	WELL	Awareness of issues (health)
1	OBG	Need OB provider			

---

## c) Public Notice & Requests

[VVV Consultants LLC]

## STAKEHOLDER E-MAIL MESSAGE #1

**From:** Chris Lang

**Date:** July 15, 2019

**To:** [clang@cassregional.org](mailto:clang@cassregional.org) / [bsexton@cassregional.org](mailto:bsexton@cassregional.org)

**BCC:** Community Leaders, Providers and Hospital Board and Staff

**Subject:** Hospital, Health Department seek community health feedback in Cass County

**Cass Regional Medical Center**, in collaboration with Cass County Health Department, is updating their 2016 Community Health Needs Assessment (CHNA). (*Note: This assessment update is a follow-up to meet final IRS regulations released on 01/02/2015, requiring all non-profit hospitals to conduct a Community Health Needs Assessment and adopt an implementation strategy at least once every three years*).

Your feedback and suggestions regarding community health delivery are very important to collect in order to complete the 2019 Community Health Needs Assessment and implementation plan updates.

To accomplish this work, a short online survey has been developed:  
[https://www.surveymonkey.com/r/CassCo\\_Stakeholders\\_CHNA2019](https://www.surveymonkey.com/r/CassCo_Stakeholders_CHNA2019)

All community residents and business leaders are encouraged to **complete the 2019 online CHNA survey by Friday, Sept 6**. All responses are confidential. Thank you in advance for your time and support in participating with this important request.

Please save the date for the Community Town Hall meeting on Thursday, **September 19 from 5:30 p.m. to 7:00 p.m. at Cass Regional Medical Center**, located at 2800 E. Rock Haven Rd., in Harrisonville.

VVV Consultants LLC, an independent research firm from Olathe, Kansas, has been retained to conduct this countywide research. If you have any questions about CHNA activities, please call Cass Regional at (816) 380-3474 or Cass County Health Department at (816) 380-8427.

Sincerely,  
Chris Lang

# Hospital, Health Department seek community health feedback in Cass County

## Press Release Announcement

For Immediate Release 7/15/2019

For more information, contact:

Brittney Sexton, Marketing and Outreach Coordinator

[bsexton@cassregional.org](mailto:bsexton@cassregional.org)

(816) 380-3474

Over the next three months, Cass Regional Medical Center, in collaboration with Cass County Health Department, is updating the 2016 Cass County (Harrisonville, MO) Community Health Needs Assessment (CHNA). (Note: This assessment update is a follow-up to meet final IRS regulations released on 01/02/2015, requiring all non-profit hospitals to conduct a community health needs assessment and adopt an implementation strategy at least once every three years).

The goal of this assessment update is to understand progress in addressing community health needs cited in the 2016 CHNA report and to collect up-to-date community health perceptions. Once this data is collected, a community health improvement plan will be implemented in response to the top perceived health concerns in Cass County.

To accomplish this work, a short online survey has been developed:

[https://www.surveymonkey.com/r/CassCo\\_Stakeholders\\_CHNA2019](https://www.surveymonkey.com/r/CassCo_Stakeholders_CHNA2019)

All community residents and business leaders are encouraged to **complete the 2019 online CHNA survey by Friday, Sept 6**. All responses are confidential. Thank you in advance for your time and support in participating with this important request.

“We hope that the community and health professionals will take advantage of this opportunity to provide input into the future of health care delivery in our county,” comments Chris Lang, Cass Regional CEO.

VVV Consultants LLC, an independent research firm from Olathe, Kansas, has been retained to conduct this countywide research. If you have any questions about CHNA activities, please call Cass Regional at (816) 380-3474 or Cass County Health Department at (816) 380-8427.

# Cass County community notes – The Kansas City Star

[BY KAREN RIDDER](#)

JULY 30, 2019 02:27 PM,

## **COMMUNITY FEEDBACK WANTED**

Cass Regional Medical Center and the Cass County Health Department are hoping to get public feedback on health needs in the community. The organizations are updating a 2016 Cass County Community Health Needs Assessment. The goal of the current survey is to assess progress on community health needs identified three years ago. The information gathered will help plan future health care services in the area. To participate go to the surveymonkey site at: [https://www.surveymonkey.com/r/CassCo\\_Stakeholders\\_CHNA2019](https://www.surveymonkey.com/r/CassCo_Stakeholders_CHNA2019). The survey is open until Friday, Sept. 6. For more information call Cass Regional at 816- 380-3474 or Cass County Health Department at 816-380-8427.



## STAKEHOLDER E-MAIL MESSAGE #2

**From:** [bsexton@cassregional.org](mailto:bsexton@cassregional.org)

**Date:** Aug 9, 2019

**To:** [bsexton@cassregional.org](mailto:bsexton@cassregional.org)

**BCC:** Community Leaders, Providers and Hospital Board and Staff

**Subject:** CHNA Cass County MO – Cass Regional Town Hall Invite – Sept 19

To Community Leaders:

**Cass Regional Medical Center** will be hosting a conversation with our community to review Cass County, MO current health indicators and results from the Stakeholder survey on Thursday evening on September 19<sup>th</sup>. *“This Town Hall discussion is very important to us in order to serve our local service area and meet our national requirements,”* says Chris Lang, Cass Regional Medical Center CEO.

All community members are invited to attend Town Hall meeting scheduled on Thursday, **September 19th from 5:30 p.m. to 7:00 p.m. at Cass Regional Medical Center, Conference Center**, located at 2800 E. Rock Haven Rd., in Harrisonville MO. A light dinner will also be served starting at 5:15 p.m.

Please **Reserve your** Town Hall seat here:

[https://www.surveymonkey.com/r/CassRegional\\_CHNA\\_RSVP2019](https://www.surveymonkey.com/r/CassRegional_CHNA_RSVP2019)

VVV Consultants LLC, an independent research firm from Olathe, Kansas, has been retained to complete Cass Regional’s CHNA research.

If you have any questions about CHNA activities, please call Cass Regional at (816) 380-3474.

Sincerely,  
Brittney Sexton

# Cass Regional Hosts Community Conversation CHNA Town Hall on Sept 19

## Press Release Announcement

**For Immediate Release Aug 9, 2019**

For more information, contact:

Brittney Sexton, Marketing and Outreach Coordinator

[bsexton@cassregional.org](mailto:bsexton@cassregional.org)

(816) 380-3474

Harrisonville MO **Cass Regional Medical Center** will be hosting a conversation with our community to review Cass County, MO current health indicators and the recent results from the Stakeholder survey on Thursday, September 19<sup>th</sup>. *“This Town Hall discussion is very important to us in order to serve our local service area and meet our national requirements,”* says Chris Lang, Cass Regional Medical Center CEO.

**All community members are invited to attend the Town Hall meeting scheduled on Thursday, September 19th from 5:30 p.m. to 7:00 p.m. at Cass Regional Medical Center, Conference Center**, located at 2800 E. Rock Haven Rd., in Harrisonville, MO. A light dinner will also be served starting at 5:15 p.m.

**Please Reserve a Town Hall seat here:**

[https://www.surveymonkey.com/r/CassRegional\\_CHNA\\_RSVP2019](https://www.surveymonkey.com/r/CassRegional_CHNA_RSVP2019)

VVV Consultants LLC, an independent research firm from Olathe, Kansas, has been retained to complete Cass Regional’s CHNA research. If you have any questions about CHNA activities, please call Cass Regional at (816) 380-3474.

# LAST CALL

## Seeking Cass County MO Community Feedback 2019 Community Health Needs Assessment

**Cass Regional invites Community Feedback for CHNA.  
Share your views by taking the Cass County Stakeholder Survey.  
All responses are confidential.**



**To Start ..... go to Cass Regional's Website Homepage:  
<https://www.cassregional.org/>  
or Cass Regional's Facebook page.... OR go Online:  
[https://www.surveymonkey.com/r/CassCo\\_Stakeholders\\_CHNA2019](https://www.surveymonkey.com/r/CassCo_Stakeholders_CHNA2019)  
Thank you for your participation. Due by Sept 11<sup>th</sup>.**

### SAVE THE DATE

CHNA Community Town Hall Meeting  
Thursday, September 19<sup>th</sup> from 5:30-7p.m. in the  
Cass Regional Conference Center.  
RSVP: Cass Regional Website Homepage.  
*A light dinner will be provided starting at 5:15 p.m.*

# Community Health Needs Assessment

Community Town Hall Sept 19<sup>th</sup>, 2019

General Public is invited to attend.

Please join us for this opportunity to share your opinions and suggestions to improve healthcare delivery in Cass County, MO.



**CHNA Community Town Hall  
on Thursday, September 19<sup>th</sup>  
from 5:30-7p.m. at Cass Regional  
Conference Center (inside Main entrance)**

*A light dinner will be provided starting at 5:15 p.m.*

**To RSVP** go to:

[https://www.surveymonkey.com/r/CassRegional\\_CHNA\\_RSVP2019](https://www.surveymonkey.com/r/CassRegional_CHNA_RSVP2019)

or Visit Cass Regional's Website Homepage:

<https://www.cassregional.org/>

or call (816) 380-3474 Ext. 4811

**Thank you in advance for your participation.**

---

## d) Primary Research Detail

Neighborhood Roundtables & Online Research

[VVV Consultants LLC]

## CHNA 2019 Community Feedback - Cass County, MO N=110

ID	Zip	Overall	Movement	c1	c2	c3	When considering "overall community health quality", is it increasing, decreasing or not really changing. Why?
1001	64701	Good	Increasing - moving up	ACC	SPEC		We have greater access to more medical services and medical specialties.
1085	64701	Very Good	Not really changing much	AGE	INSU	HOSP	Seniors due to financial restraints, insurance co-pays or no insurance are reluctant to seek medical care. Hospital offers free health screenings which are greatly appreciated.
1079	64012	Good	Decreasing - slipping downward	DOCS	ACC		Not enough providers to serve the needs of the people.
1091		Good	Increasing - moving up	DOCS	DENT		More medical personnel locating in area (dentists-doctors-etc
1088	64701	Good	Increasing - moving up	DOCS	SPEC	URG	More options for health care are now available because of Marsha Burris and Renee Endicott. Continued wide range of specialists at Cass Med. Walk in clinics available in Belton/Raymore.
1056	64701	Good	Increasing - moving up	HOSP	SPEC	TEL	CRMC remains strong and vibrant - adding days for specialists in a variety of fields; telemetry resources. Plenty of dental providers. Do have concern about some of the nursing homes. Appears to be lots of turnover on nursing staff.
1021	64083	Good	Decreasing - slipping downward	HOSP			Many rumors have been circling the hospital. I want to believe these are not true but it does impact my honest opinion of how well the hospital is performing for our community.
1061	64701	Average	Decreasing - slipping downward	OBES			obesity epidemic
1063	64083	Good	Not really changing much	OP	TEL	URG	While I do see more emphasis on outpatient centers and telemedicine, I also see what appears to be underutilized urgent care centers, or simply perceived failure.
1097	64086	Average	Not really changing much	OTHR	RAD	HOSP	Need some additional equipment. They send to other hospitals when they can not perform say a MRI
1002	64701	Good	Increasing - moving up	OTHR			improved treatments/technology
1069	64078	Average	Not really changing much	OTHR			It seems to be from loved ones to church family, we continually hear of mistakes in care or diagnosis.
1092	64083	Average	Decreasing - slipping downward	RAD	FINA	STFF	I hear of high costs for x-ray and other diagnostic testing at the hospital that are much less expensive if done in Kansas Clty. I hear that the nurses don't check on the patients often enough after surgery.
1082	64082	Good	Increasing - moving up	SPEC	DOCS		Additional specialties, health care providers & programs.
1106		Good	Increasing - moving up	SPEC			Offering more "specialized" care options locally
1064	64012	Good	Increasing - moving up	SURG	OTHR		Belton Regional Medical Center just added a surgical robot to enhance surgical options.
1054		Good	Not really changing much	TRAN	INSU	URG	Lack of transportation to and from doctors' offices and hospital. Can not afford co-pays. No URGENT CARE facility in the county so hospital ER is used too much.
1109	64070	Good	Not really changing much	URG			Could use a minute clinic somewhere in town

## CHNA 2019 Community Feedback - Cass County, MO N=110

ID	Zip	Overall	Movement	c1	c2	c3	What "new" community health programs should be created to meet current community health needs? Can we partner somehow with others?
1063	64083	Good	Not really changing much	ACC	DRUG	SUIC	Better access to drug addiction programs so that we don't just treat people through Court drug treatment programs. In addition, there should be greater emphasis on suicide prevention so that we can prevent losing any more children to suicide.
1001	64701	Good	Increasing - moving up	AGE	INSU		Services for senior citizens (geriatric care), and help with navigating Medicare/Medicaid and greater knowledge of available services and assistance.
1028	64029	Very Good	Not really changing much	BH	PRIM		the mental health issue is still huge and needs connection with the PCP's in the area
1069	64078	Average	Not really changing much	BH			Mental Health Treatment, I would think the several area local mental health facilities would be good to partner with as well as, State resources in Human Health Services.
1035	64739	Good	Not really changing much	CLIN	FINA		free clinics
1086	64739	Poor	Not really changing much	CLIN			Walk in clinics
1021	64083	Good	Decreasing - slipping downward	CORP			If you must have a contractual agreement with a larger organization, choose one such as Saint Luke's who is also not for profit and has a good reputation instead of HCA who has an awful reputation, high costs, and is for profit. Implement classes for parenting such as classes for pregnant mom's, breastfeeding, mental health support groups, etc.
1012	64701	Good	Increasing - moving up	DENT	INSU		Dental needs for the uninsured when they don't qualify for assistance.
1040		Average	Decreasing - slipping downward	DIAB	INSU		Lifescan; more opportunities to have cholesterol screening and glucose/A1C readings for those without insurance, education on the importance of these
1090	64080	Very Good	Increasing - moving up	DRUG	BH		Addiction treatment and mental health treatment
1083		Very Good	Not really changing much	DRUG	SMOK	OBES	substance abuse and smoking cessation clinic obesity clinic gastroenterology specialty services
1101	64701	Very Good	Increasing - moving up	FINA			I would ask where is the money for new programs going to come from.
1002	64701	Good	Increasing - moving up	INSU	POV	GOV	Assist unemployed/uninsured/poverty stricken/homeless by connecting with resources & developing programs to assist with housing/food/clothing/jobs/transport/utilities
1097	64086	Average	Not really changing much	MRKT			Awareness- not everyone knows what Cass can provide
1065	64701	Average	Not really changing much	MRKT			Maybe a web site that shows resource available in the county or Harrisonville. It is very hard to navigate the current healthcare system, not just in this town.
1032	64701	Good	Not really changing much	OBES	NUTR	TRAN	Events specific to rural health - obesity higher in rural locations, lack of quality food, need to drive over walking, etc. Sponsoring more 5Ks, etc. - publicizing better
1098	64725	Average	Not really changing much	OBES	WELL	WIC	Obesity education, WIC availability, mental health needs more services. Health dept availability
1050	64080	Good	Not really changing much	OBG	URG		OB Urgent Care
1066		Very Good	Increasing - moving up	OBG			OB.I would think so.
1015	64747	Good	Increasing - moving up	OBG			Women's health
1060	66216	Good	Decreasing - slipping downward	PHY	KID		School-based therapy for students
1023	64701	Good	Increasing - moving up	PREV	WELL		Teaching the community about prevention and educating them
1027	64701	Average	Not really changing much	PSY	SUIC	DRUG	A stand alone psych facility for the suicidals and druggies, NOT a new program or branch of Cass regional!
1088	64701	Good	Increasing - moving up	TRAN	EYE	DENT	I believe the state Lions Club has a van that does vision and dental screenings for adults in communities.
1043	64747	Average	Not really changing much	URG	OBG		need a urgent care and need OB closer to harrisonville
1009	64701	Good	Decreasing - slipping downward	URG	OTHR		Urgent care online sched/medical records Use online to reach more people. Out with the old in the with the new ideas.
1048	64040	Very Good	Not really changing much	URG			urgent care

## CHNA 2019 Community Feedback - Cass County, MO N=110

ID	Zip	Overall	Movement	c1	c2	c3	What "new" community health programs should be created to meet current community health needs? Can we partner somehow with others?
1005	64747	Average	Increasing - moving up	WELL	DOCS	DOH	Wellness programs - if the general population was more educated many of the problems people face could be reduced or eliminated. People don't pay to go to the doctor for wellness programs, they pay to go when they are sick which is too late many times. The schools educate the children on health issues but by the time they become adults much has been forgotten. If we had a way to partner between schools, health care providers and the county health dept. to have a health fair in conjunction with some other time when people are already drawn to an event, it might have better attendance and results.
1051	64080	Good	Not really changing much	WELL	DRUG		Extensive DARE program in all schools with the BEST instructors!
1008	64747	Good	Not really changing much	WELL	NUTR	OBES	a fresh foods/vegetables program to help fight obesity in the local community. because there are so many that cannot afford healthy eating options, partner with the WIC and health department to develop a fresh foods/vegetables program to those that meet criteria for WIC or Medicaid. these individuals could then also be getting education on healthy eating habits and exercise etc.
1085	64701	Very Good	Not really changing much	WELL	TRAN	CORP	Health awareness programs need to be taken out to communities, many lack transportation. Expand partnerships for not only nursing homes but hospice and other services. Partnership become more important



Let Your Voice Be Heard!

Cass Regional Medical Center (CRMC) requests your input in order to create a 2019-2021 Cass County, Missouri Community Health Needs Assessment (CHNA). To collect "up to date" community feedback, a short online survey has been created to uncover any current community health issues and evaluate local health delivery.

While your participation is voluntary and confidential, all community input is valued. Thank you for your attention! Deadline to participate is Friday, September 13th, 2019.

1. In your opinion, how would you rate the "Overall Quality" of healthcare delivery in our community?

- Very Poor  Poor  Average  Good  Very Good

2. When considering "overall community health quality", is it ...

- Increasing - moving up  Decreasing - slipping downward  
 Not really changing much

Why? (please specify)

3. In your opinion, are there any healthcare services or delivery issues that you feel need to be improved, worked on and/or changed? (Please be specific.)

4. In your own words, what is the general community perception of healthcare providers (i.e. hospitals, doctors, public health, etc.) serving our community? (Please be specific.)

5. From past health assessments of our community, a number of health needs were identified as priorities. Are any of these an ongoing problem for our community? Please select all that apply.

- |  |  |
|--|--|
| <input type="checkbox"/> Access to Primary Care                  | <input type="checkbox"/> Mental Health Services        |
| <input type="checkbox"/> Access to Dental Services for Uninsured | <input type="checkbox"/> Obesity (Nutrition/ Exercise) |
| <input type="checkbox"/> Drugs                                   | <input type="checkbox"/> Suicide                       |
| <input type="checkbox"/> Healthcare Transportation               | <input type="checkbox"/> Urgent Care Services          |
| <input type="checkbox"/> Lack of local Health Department funding |  |

6. Which past health assessment of our community need is NOW the "most pressing" for improvement? Please select top THREE.

- |  |   |
|--|---|
| <input type="checkbox"/> Access to Primary Care                  | <input type="checkbox"/> Mental Health Services       |
| <input type="checkbox"/> Access to Dental Services for Uninsured | <input type="checkbox"/> Obesity (Nutrition/Exercise) |
| <input type="checkbox"/> Drugs                                   | <input type="checkbox"/> Suicide                      |
| <input type="checkbox"/> Healthcare Transportation               | <input type="checkbox"/> Urgent Care Services         |
| <input type="checkbox"/> Lack of local Health Department funding |   |

7. In your opinion, what are the root causes of "poor health" in our community? Please select top THREE.

- |   |  |
|---|--|
| <input type="checkbox"/> Health & wellness education                | <input type="checkbox"/> Elder assistance programs                                     |
| <input type="checkbox"/> Chronic disease prevention                 | <input type="checkbox"/> Family assistance programs                                    |
| <input type="checkbox"/> Limited access to mental health assistance | <input type="checkbox"/> Awareness of existing local programs, providers, and services |
| <input type="checkbox"/> Case management assistance                 | <input type="checkbox"/> Finance & Insurance coverage                                  |

Other (please specify)

8. How would our community area residents rate each of the following health services?

	Very Good	Good	Fair	Poor	Very Poor
Ambulance Services	<input type="radio"/>	<input type="radio"/>	<input type="radio"/>	<input type="radio"/>	<input type="radio"/>
Child Care	<input type="radio"/>	<input type="radio"/>	<input type="radio"/>	<input type="radio"/>	<input type="radio"/>
Chiropractors	<input type="radio"/>	<input type="radio"/>	<input type="radio"/>	<input type="radio"/>	<input type="radio"/>
Dentists	<input type="radio"/>	<input type="radio"/>	<input type="radio"/>	<input type="radio"/>	<input type="radio"/>
Emergency Room	<input type="radio"/>	<input type="radio"/>	<input type="radio"/>	<input type="radio"/>	<input type="radio"/>
Eye Doctor/Optomtrist	<input type="radio"/>	<input type="radio"/>	<input type="radio"/>	<input type="radio"/>	<input type="radio"/>
Family Planning Services	<input type="radio"/>	<input type="radio"/>	<input type="radio"/>	<input type="radio"/>	<input type="radio"/>
Home Health	<input type="radio"/>	<input type="radio"/>	<input type="radio"/>	<input type="radio"/>	<input type="radio"/>
Hospice	<input type="radio"/>	<input type="radio"/>	<input type="radio"/>	<input type="radio"/>	<input type="radio"/>

9. How would our community area residents rate each of the following health services? Continued.

	Very Good	Good	Fair	Poor	Very Poor
Inpatient Services	<input type="radio"/>	<input type="radio"/>	<input type="radio"/>	<input type="radio"/>	<input type="radio"/>
Mental Health	<input type="radio"/>	<input type="radio"/>	<input type="radio"/>	<input type="radio"/>	<input type="radio"/>
Nursing Home	<input type="radio"/>	<input type="radio"/>	<input type="radio"/>	<input type="radio"/>	<input type="radio"/>
Outpatient Services	<input type="radio"/>	<input type="radio"/>	<input type="radio"/>	<input type="radio"/>	<input type="radio"/>
Pharmacy	<input type="radio"/>	<input type="radio"/>	<input type="radio"/>	<input type="radio"/>	<input type="radio"/>
Physician Clinics	<input type="radio"/>	<input type="radio"/>	<input type="radio"/>	<input type="radio"/>	<input type="radio"/>
Public Health	<input type="radio"/>	<input type="radio"/>	<input type="radio"/>	<input type="radio"/>	<input type="radio"/>
School Nurse	<input type="radio"/>	<input type="radio"/>	<input type="radio"/>	<input type="radio"/>	<input type="radio"/>
Specialists/Medical Providers	<input type="radio"/>	<input type="radio"/>	<input type="radio"/>	<input type="radio"/>	<input type="radio"/>

10. Community Health Readiness is vital. How would you rate each of the following?

	Very Good	Good	Fair	Poor	Very Poor
Early Childhood Development Programs	<input type="radio"/>	<input type="radio"/>	<input type="radio"/>	<input type="radio"/>	<input type="radio"/>
Emergency Preparedness	<input type="radio"/>	<input type="radio"/>	<input type="radio"/>	<input type="radio"/>	<input type="radio"/>
Food and Nutrition Services/Education	<input type="radio"/>	<input type="radio"/>	<input type="radio"/>	<input type="radio"/>	<input type="radio"/>
Poverty/Financial HEalth	<input type="radio"/>	<input type="radio"/>	<input type="radio"/>	<input type="radio"/>	<input type="radio"/>
Health Screenings (such as asthma, hearing, vision, wellness)	<input type="radio"/>	<input type="radio"/>	<input type="radio"/>	<input type="radio"/>	<input type="radio"/>
Immunization Programs	<input type="radio"/>	<input type="radio"/>	<input type="radio"/>	<input type="radio"/>	<input type="radio"/>
Obesity Prevention & Treatment	<input type="radio"/>	<input type="radio"/>	<input type="radio"/>	<input type="radio"/>	<input type="radio"/>

11. Community Health Readiness is vital. How would you rate each of the following? Continued.

	Very Good	Good	Fair	Poor	Very Poor
Spiritual Health Support	<input type="radio"/>	<input type="radio"/>	<input type="radio"/>	<input type="radio"/>	<input type="radio"/>
Prenatal / Child Health Programs	<input type="radio"/>	<input type="radio"/>	<input type="radio"/>	<input type="radio"/>	<input type="radio"/>
Sexually Transmitted Disease Testing	<input type="radio"/>	<input type="radio"/>	<input type="radio"/>	<input type="radio"/>	<input type="radio"/>
Substance Use Treatment & Education	<input type="radio"/>	<input type="radio"/>	<input type="radio"/>	<input type="radio"/>	<input type="radio"/>
Tobacco Prevention & Cessation Programs	<input type="radio"/>	<input type="radio"/>	<input type="radio"/>	<input type="radio"/>	<input type="radio"/>
Violence Prevention	<input type="radio"/>	<input type="radio"/>	<input type="radio"/>	<input type="radio"/>	<input type="radio"/>
Women's Wellness Programs	<input type="radio"/>	<input type="radio"/>	<input type="radio"/>	<input type="radio"/>	<input type="radio"/>
WIC Nutrition Program	<input type="radio"/>	<input type="radio"/>	<input type="radio"/>	<input type="radio"/>	<input type="radio"/>

12. In the past 2 years, did you or someone you know receive healthcare services outside of our community?

- Yes
- No
- I don't know

If YES, please specify the healthcare services received.

13. Are our healthcare organizations, providers and community members actively working together to address/improve health in our community?

- Yes
- No
- I don't know

Please explain

14. What "new" community health programs should be created to meet current community health needs?  
Can we partner somehow with others?

15. Are there any other health needs (listed below) that need to be discussed further at our upcoming CHNA Town Hall meeting? (Please select all that apply.)

- |  |   |  |
|--|---|--|
| <input type="checkbox"/> Abuse/Violence                    | <input type="checkbox"/> Lead Exposure            | <input type="checkbox"/> Sexually Transmitted Diseases |
| <input type="checkbox"/> Alcohol                           | <input type="checkbox"/> Mental Illness           | <input type="checkbox"/> Smoke-Free Workplace          |
| <input type="checkbox"/> Breast Feeding Friendly Workplace | <input type="checkbox"/> Nutrition/Access to Food | <input type="checkbox"/> Suicide                       |
| <input type="checkbox"/> Cancer                            | <input type="checkbox"/> Obesity                  | <input type="checkbox"/> Teen Pregnancy                |
| <input type="checkbox"/> Diabetes                          | <input type="checkbox"/> Environmental health     | <input type="checkbox"/> Tobacco Use                   |
| <input type="checkbox"/> Drugs/Substance Abuse             | <input type="checkbox"/> Physical Exercise        | <input type="checkbox"/> Vaccinations                  |
| <input type="checkbox"/> Family Planning                   | <input type="checkbox"/> Poverty                  | <input type="checkbox"/> Water Quality                 |
| <input type="checkbox"/> Heart Disease                     | <input type="checkbox"/> Lung Disease             | <input type="checkbox"/> Wellness Education            |

Other (please specify)

16. For reporting purposes, are you involved in or are you a .... ? (Please select all that apply.)

- |  |   |  |
|--|---|--|
| <input type="checkbox"/> Business / Merchant                 | <input type="checkbox"/> EMS / Emergency        | <input type="checkbox"/> Other Health Professional |
| <input type="checkbox"/> Community Board Member              | <input type="checkbox"/> Farmer / Rancher       | <input type="checkbox"/> Parent / Caregiver        |
| <input type="checkbox"/> Case Manager / Discharge Planner    | <input type="checkbox"/> Hospital / Health Dept | <input type="checkbox"/> Pharmacy / Clinic         |
| <input type="checkbox"/> Clergy                              | <input type="checkbox"/> Housing / Builder      | <input type="checkbox"/> Media (Paper/TV/Radio)    |
| <input type="checkbox"/> College / University                | <input type="checkbox"/> Insurance              | <input type="checkbox"/> Senior Care               |
| <input type="checkbox"/> Consumer Advocate                   | <input type="checkbox"/> Labor                  | <input type="checkbox"/> Teacher / School Admin    |
| <input type="checkbox"/> Dentist / Eye Doctor / Chiropractor | <input type="checkbox"/> Law Enforcement        | <input type="checkbox"/> Veteran                   |
| <input type="checkbox"/> Elected Official - City/County      | <input type="checkbox"/> Mental Health          | <input type="checkbox"/> Unemployed                |

Other (please specify)

17. What is your home ZIP code? Please enter 5-digit ZIP code; for example 00544 or 95305



## VVV Consultants LLC

**Vince Vandehaar, MBA**

*Principal & Adjunct Professor*

(913) 302-7264 (C)

VVV@VandehaarMarketing.com

**Tessa E. Taylor, BBA BA**

*Lead Consultant*

(920) 250-3722 (C)

TET@VandehaarMarketing.com

Office:

601 N Mahaffie, Olathe, KS 66061

<http://vandehaarmarketing.com/>

**VVV Consultants LLC** is an Olathe, KS based “boutique” healthcare consulting firm specializing in Strategy; Research and Business Development services. We partner with clients. Plan the Work; Work the Plan