

EYE PROTECTION | COVID-RELATED STRATEGIES

Eyewear must be worn during all direct patient care situations.

Eyewear comes in a variety of forms. Please use this flyer as a reference for how CMH-issued PPE is to be worn.

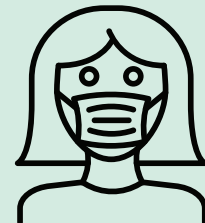
CLINICAL SITUATION



UNMASKED PATIENT



AEROSOL GENERATING PROCEDURE



MASKED PATIENT

CHOOSE ONE:



Gasket-Sealing Goggles



Gasket-Sealing Glasses



Face Shield

CHOOSE ONE:



Gasket-Sealing Goggles



Gasket-Sealing Glasses



Face Shield

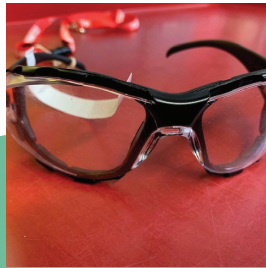


Safety Glasses

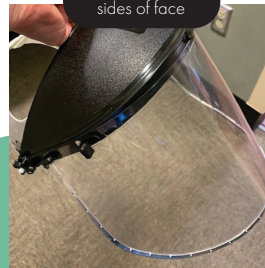
CMH EYEWEAR OPTIONS



GASKET SEALING GOGGLES



GASKET SEALING GLASSES



FACE SHIELD



SAFETY GLASSES



CDC recommendations state "protective eyewear (i.e. safety glasses, trauma glasses) with gaps between glasses and the face likely do not protect eyes from all splashes and sprays."

Source: <https://www.cdc.gov/coronavirus/2019-ncov/hcp/ppe-strategy/eye-protection.html>