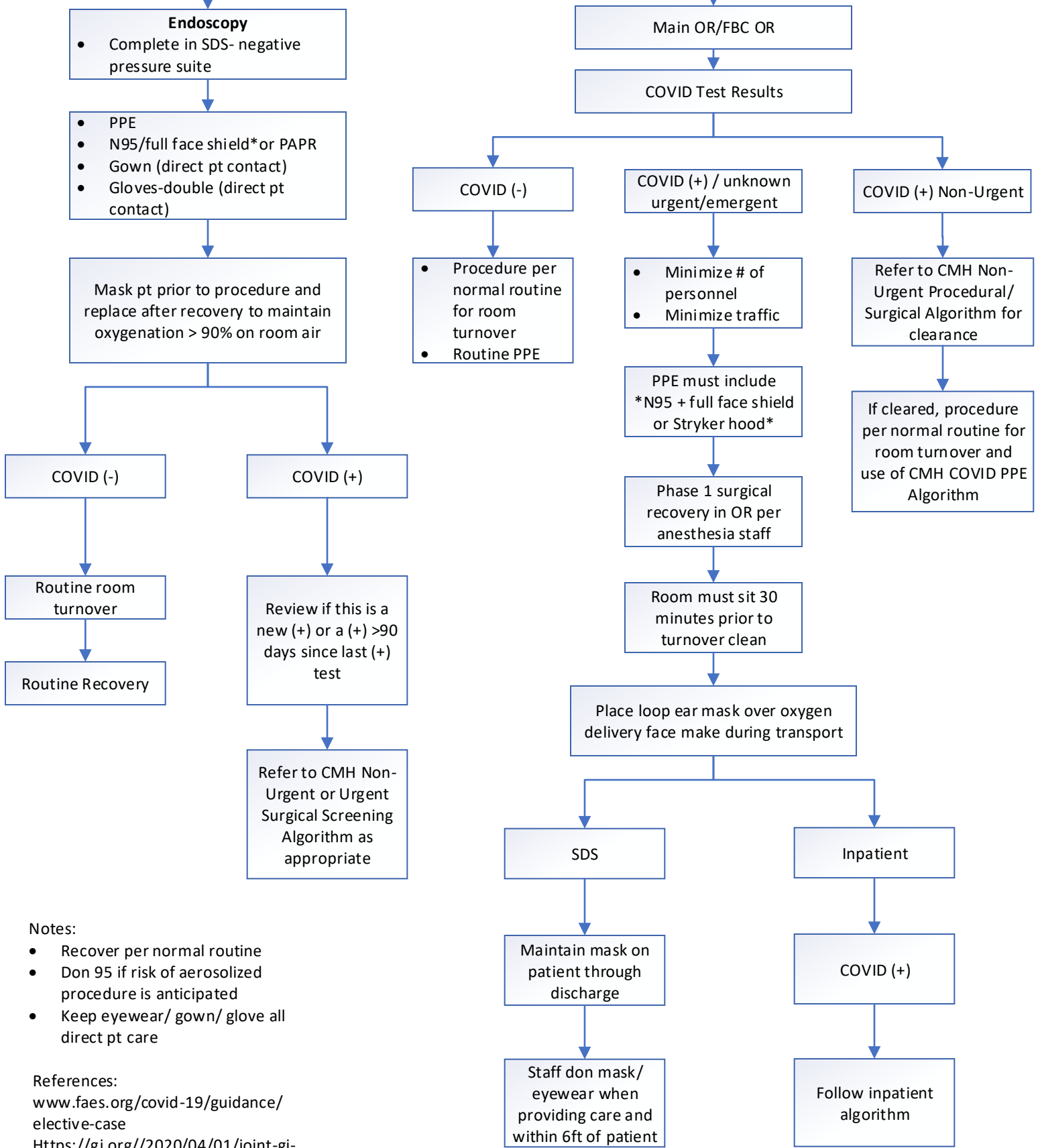


Surgical Care COVID Algorithm

(Updated 7.23.21)



Notes:

- Recover per normal routine
- Don 95 if risk of aerosolized procedure is anticipated
- Keep eyewear/ gown/ glove all direct pt care

References:

www.faes.org/covid-19/guidance/elective-case
<https://gi.org//2020/04/01/joint-gi-society-message-on-ppe-during-covid-19/>