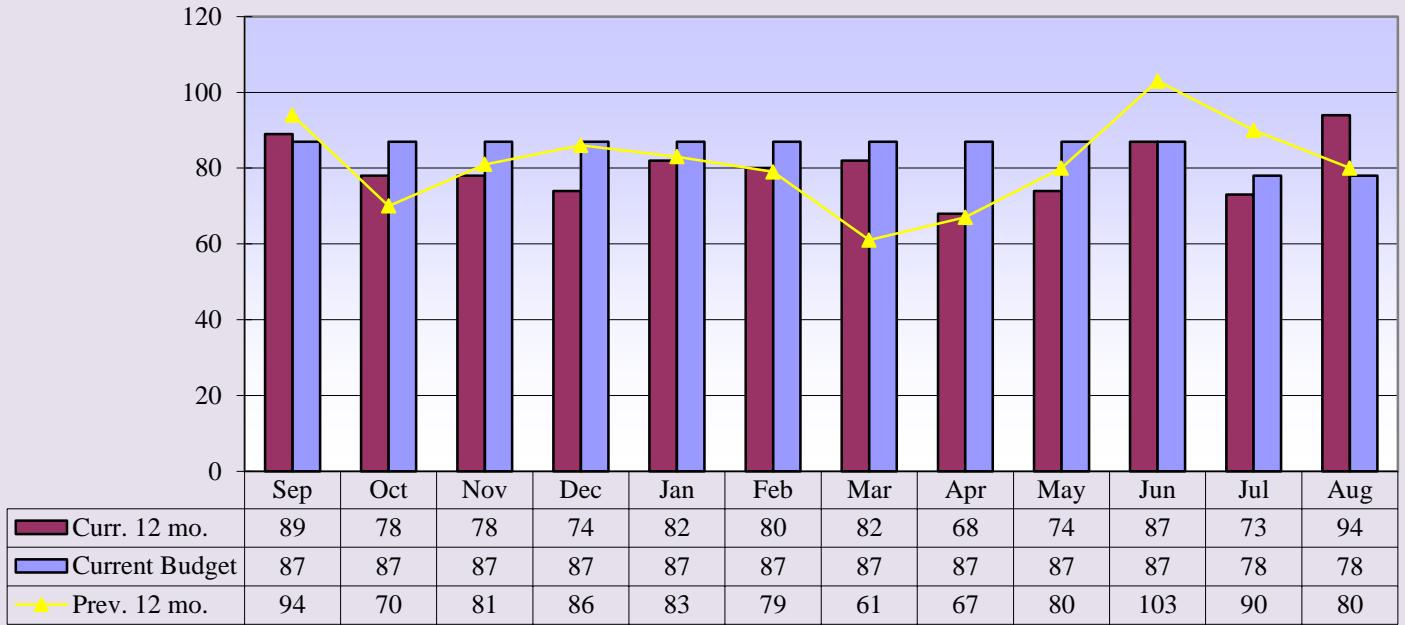


**Memorial Hospital of Converse County**  
**Financial and Statistical Packet**  
**Table of Contents - August 31, 2016**

	<u>Page #</u>
Admissions and Average IP Daily Census Graphs	1
Average Floor Census Breakdown Graph	2
Average Monthly Inpatient Admissions by Physician Graph	3
Average Length of Stay by Physician Graph	4
Payor Mix Comparisons and Emergency Room Visits Graphs	5
Total Surgeries and Orthopedic Surgeries Graphs	6
General and OB/GYN Surgery Graphs	7
Procedure Core Visits Graphs	8
Mammography Exams Graph	9
MRI and Cat Scan Graphs	10
Nuclear Medicine and Ultrasound Exams Graphs	11
Lab Procedures and Other X-Ray Graphs	12
Newborns and Net Days of Revenue in A/R Graphs	13
Respiratory and EKG Procedures Graphs	14
Hospital Revenue Graph	15
Income Statement/Budget Variance Report	16
Financial and Statistical Highlights	17
Statistics (Ratios - Productivity Indicators)	18
Balance Sheet	19
Cash Flow Statement	20

**Memorial Hospital of Converse County  
Admissions and Average IP Daily Census  
August 2016**

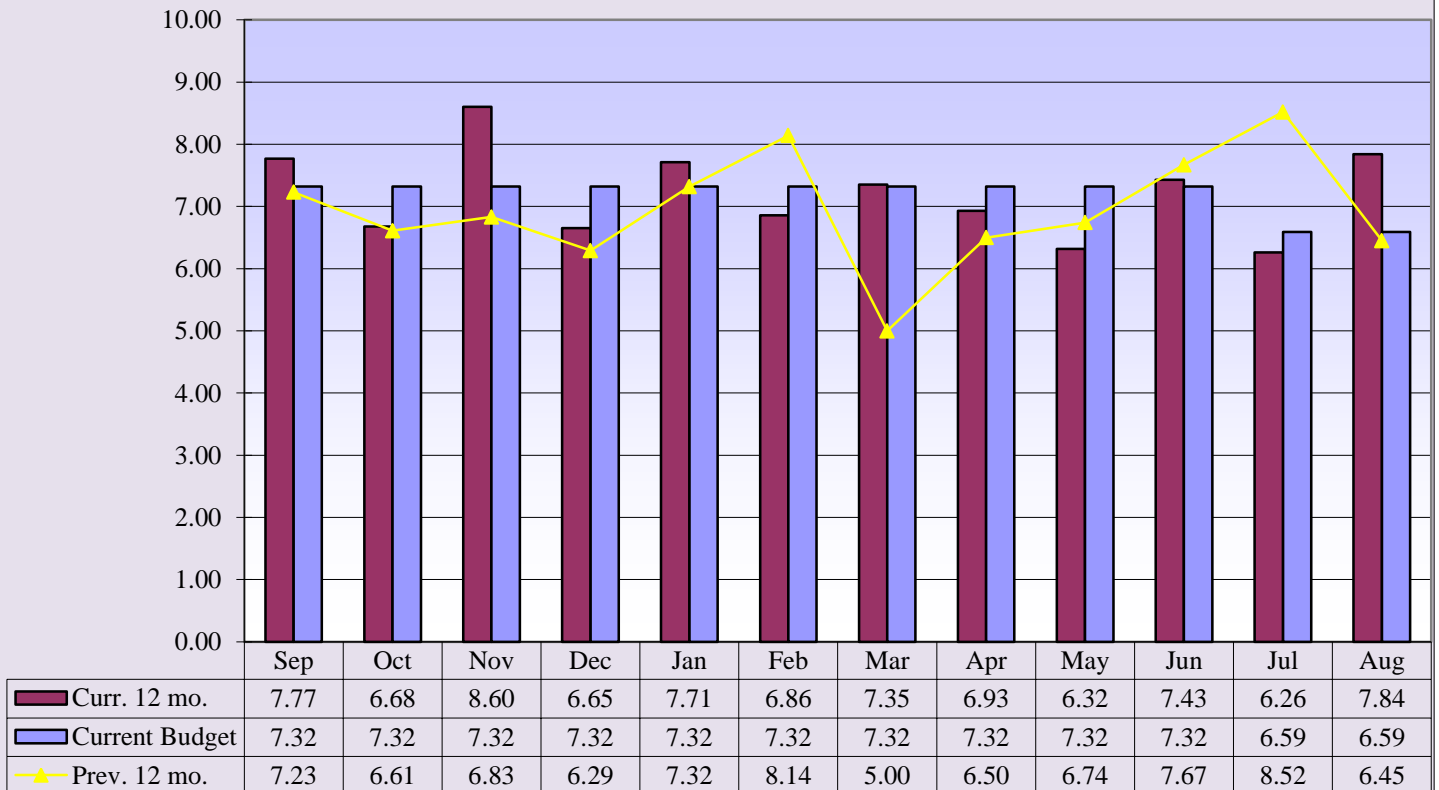
**Admissions**



**Current 12 mo. avg. = 80**

**Previous 12 mo. avg. = 81**

**Average IP Daily Census**

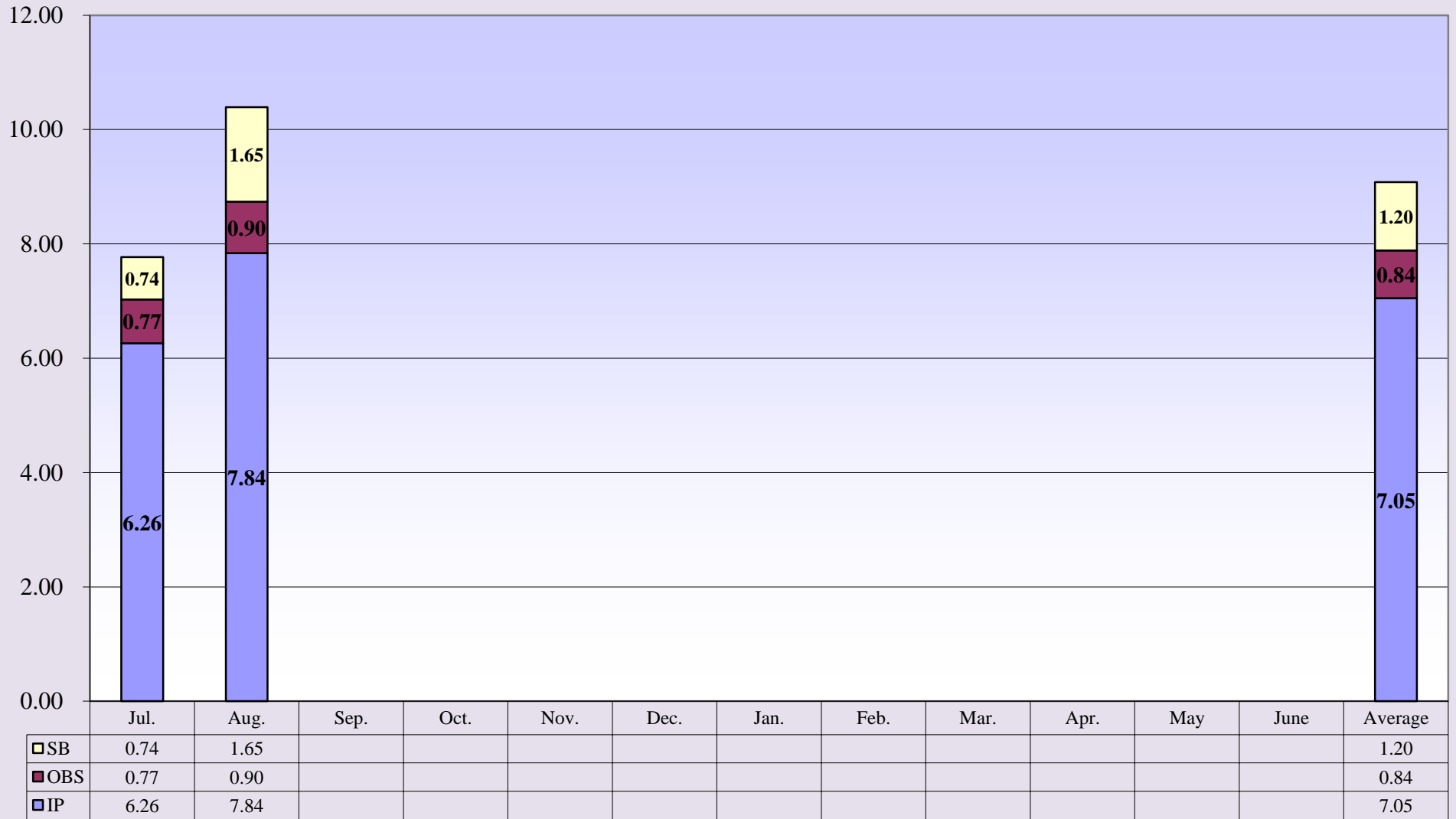


**Curr. 12 mo. avg. = 7.20**

**Prev. 12 mo. avg. = 6.94**

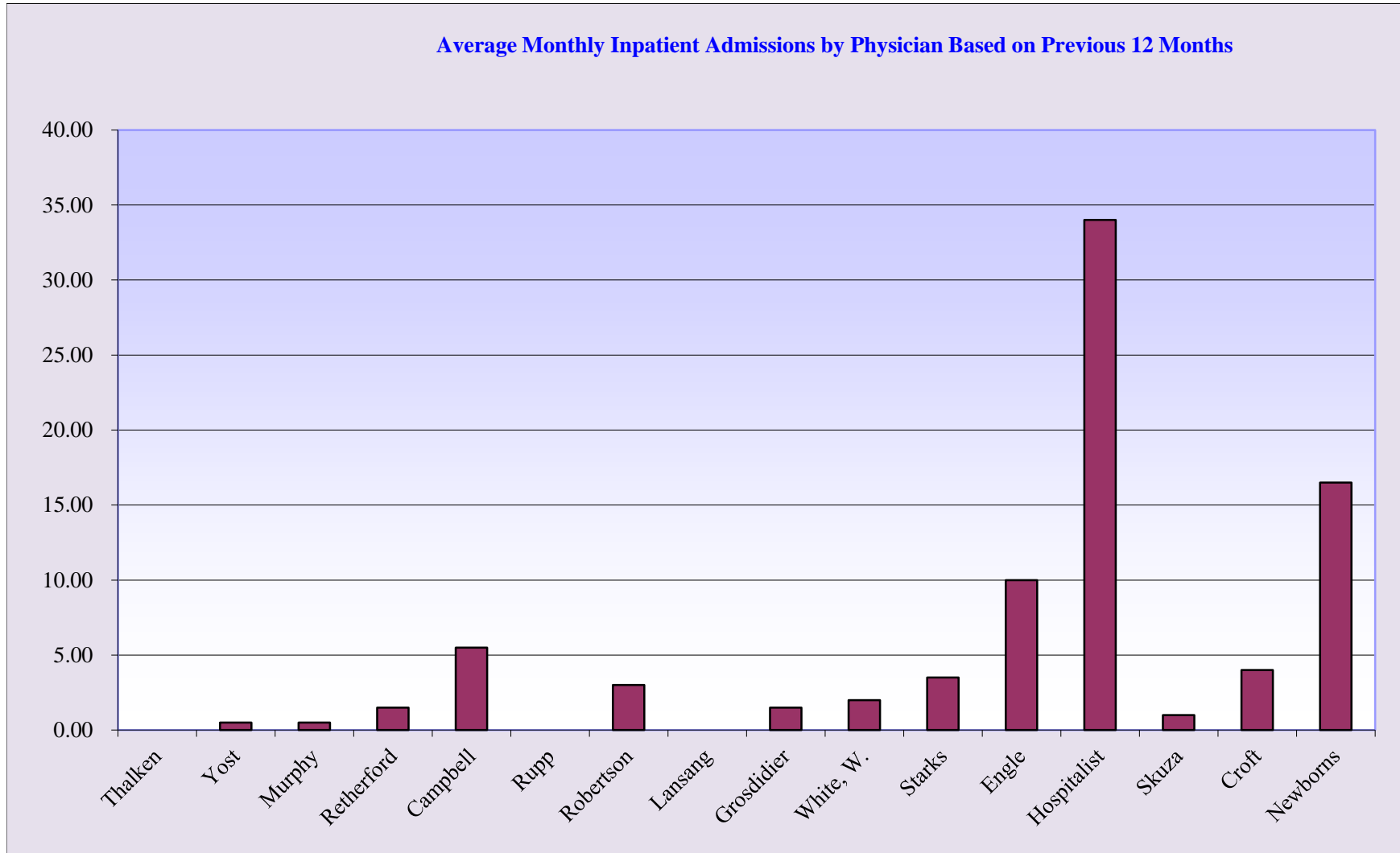
Memorial Hospital of Converse County  
(FY 2017) Average Floor Census Breakdown  
August 2016

## (FY 2017) Average Floor Census Breakdown



IP
 OBS
 SB

**Memorial Hospital of Converse County  
Average Monthly Inpatient Admissions by Physician  
August 2016**



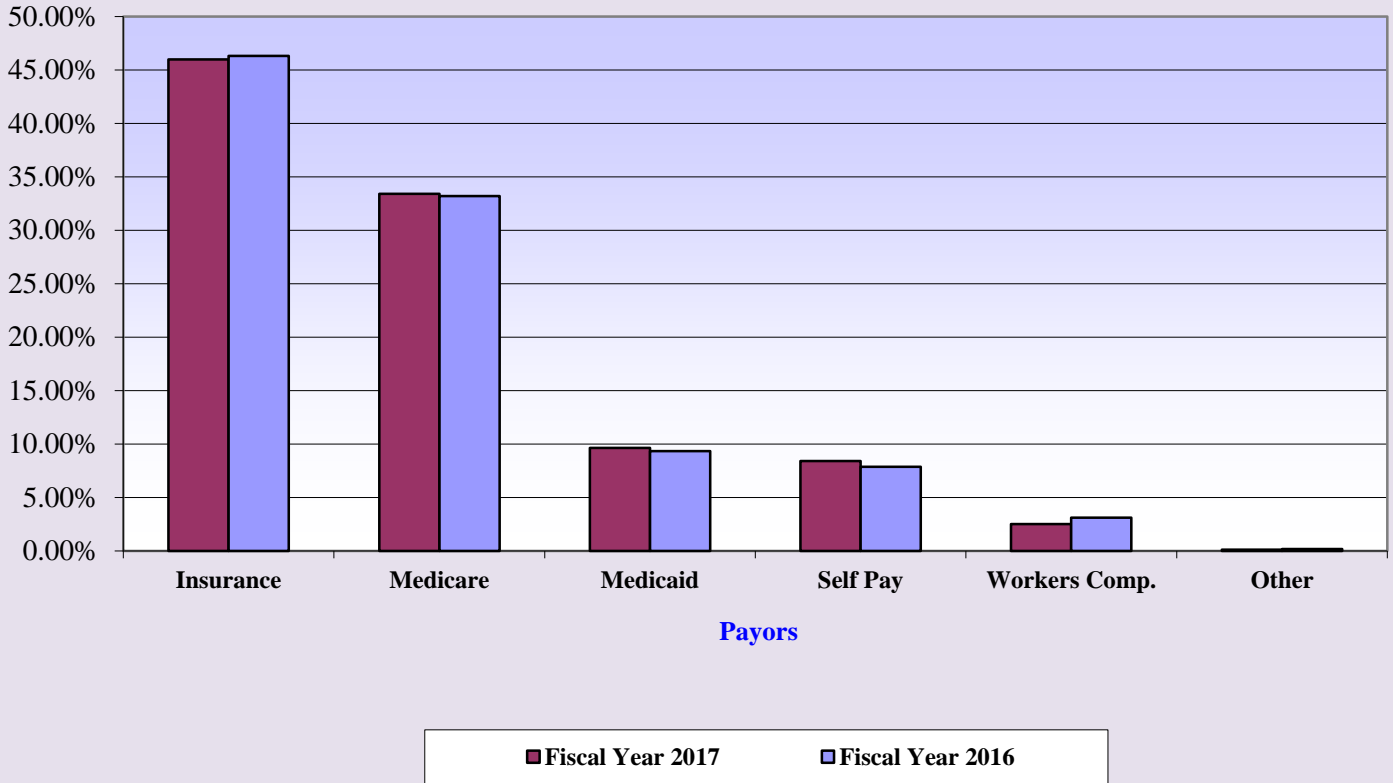
**Memorial Hospital of Converse County  
Average Length of Stay by Physician  
August 2016**

**Average Length of Stay by Physician for Fiscal Year 2017**

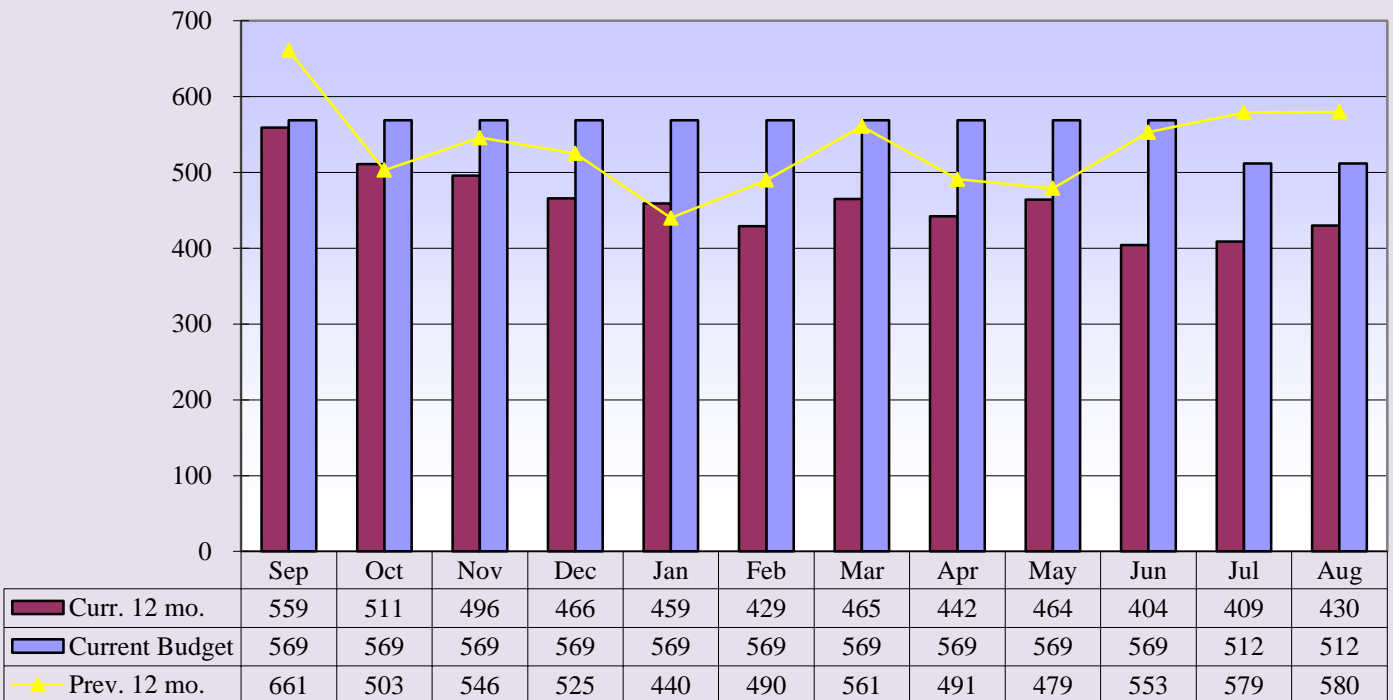


**Memorial Hospital of Converse County  
Payor Mix Comparisons and ER Visits  
August 2016**

**Payor Mix Comparisons**



**Emergency Room Visits**

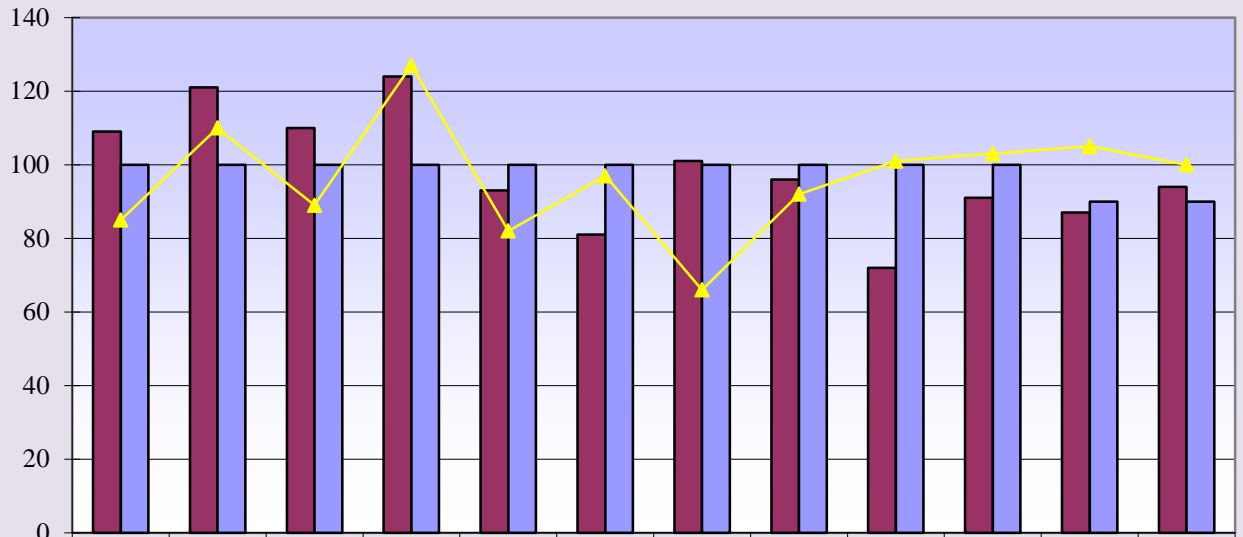


**Curr. 12 mo. avg. = 461**

**Prev. 12. mo. avg. = 534**

**Memorial Hospital of Converse County  
Total Surgeries and Orthopedic Surgeries  
August 2016**

**Total Surgeries**

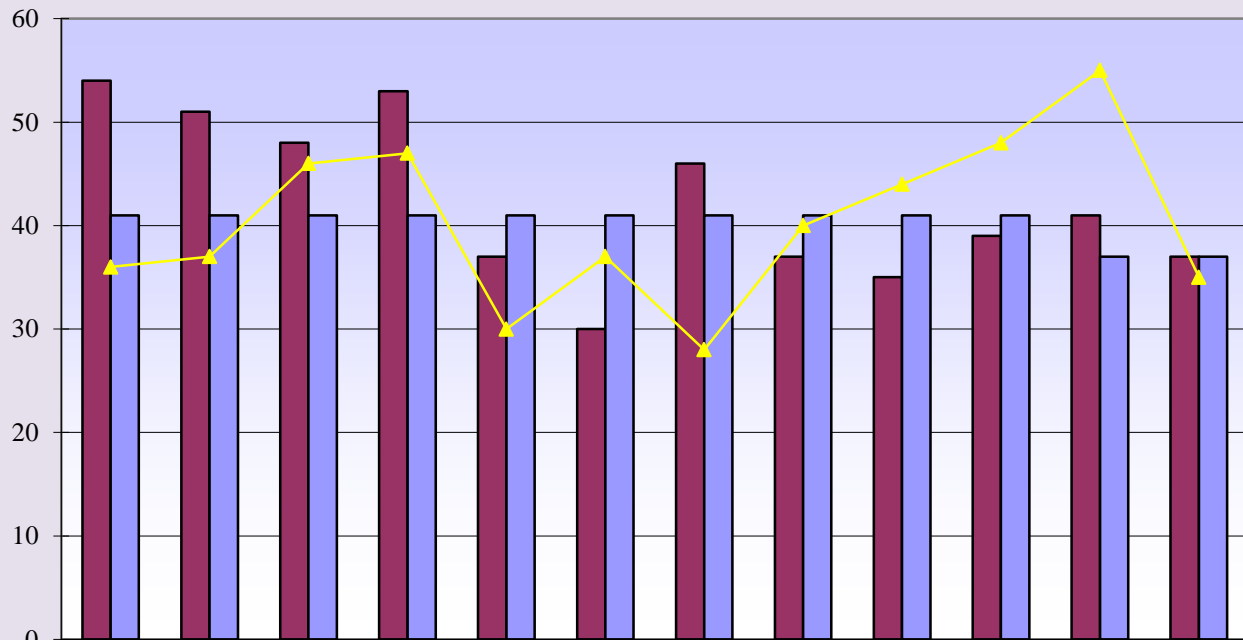


	Sep	Oct	Nov	Dec	Jan	Feb	Mar	Apr	May	Jun	Jul	Aug
Curr. 12 mo.	109	121	110	124	93	81	101	96	72	91	87	94
Current Budget	100	100	100	100	100	100	100	100	100	100	90	90
Prev. 12 mo.	85	110	89	127	82	97	66	92	101	103	105	100

**Current 12 mo. avg. = 98**

**Previous 12 mo. avg. = 96**

**Orthopedic Surgeries**



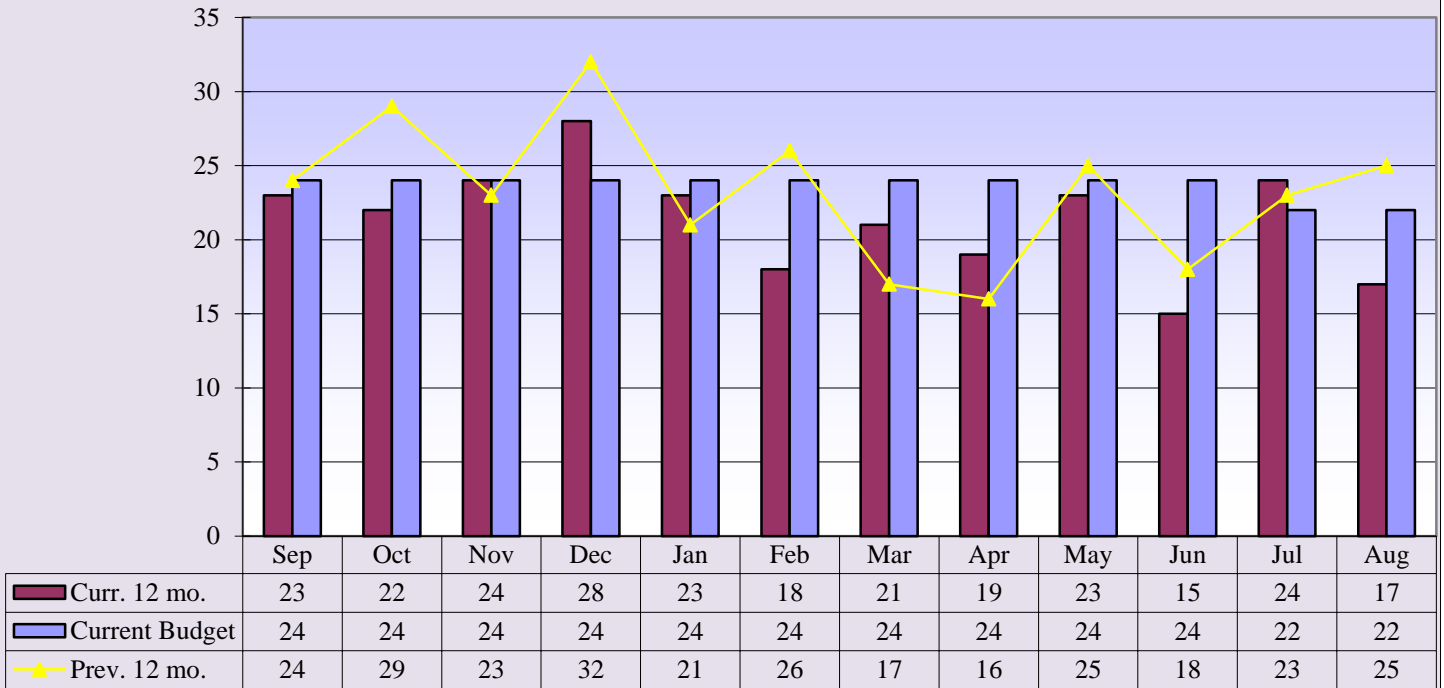
	Sep	Oct	Nov	Dec	Jan	Feb	Mar	Apr	May	Jun	Jul	Aug
Curr. 12 mo.	54	51	48	53	37	30	46	37	35	39	41	37
Current Budget	41	41	41	41	41	41	41	41	41	41	37	37
Prev. 12 mo.	36	37	46	47	30	37	28	40	44	48	55	35

**Curr. 12 mo. avg. = 42**

**Prev. 12 mo. avg. = 40**

**Memorial Hospital of Converse County  
General and OB/GYN Surgeries  
August 2016**

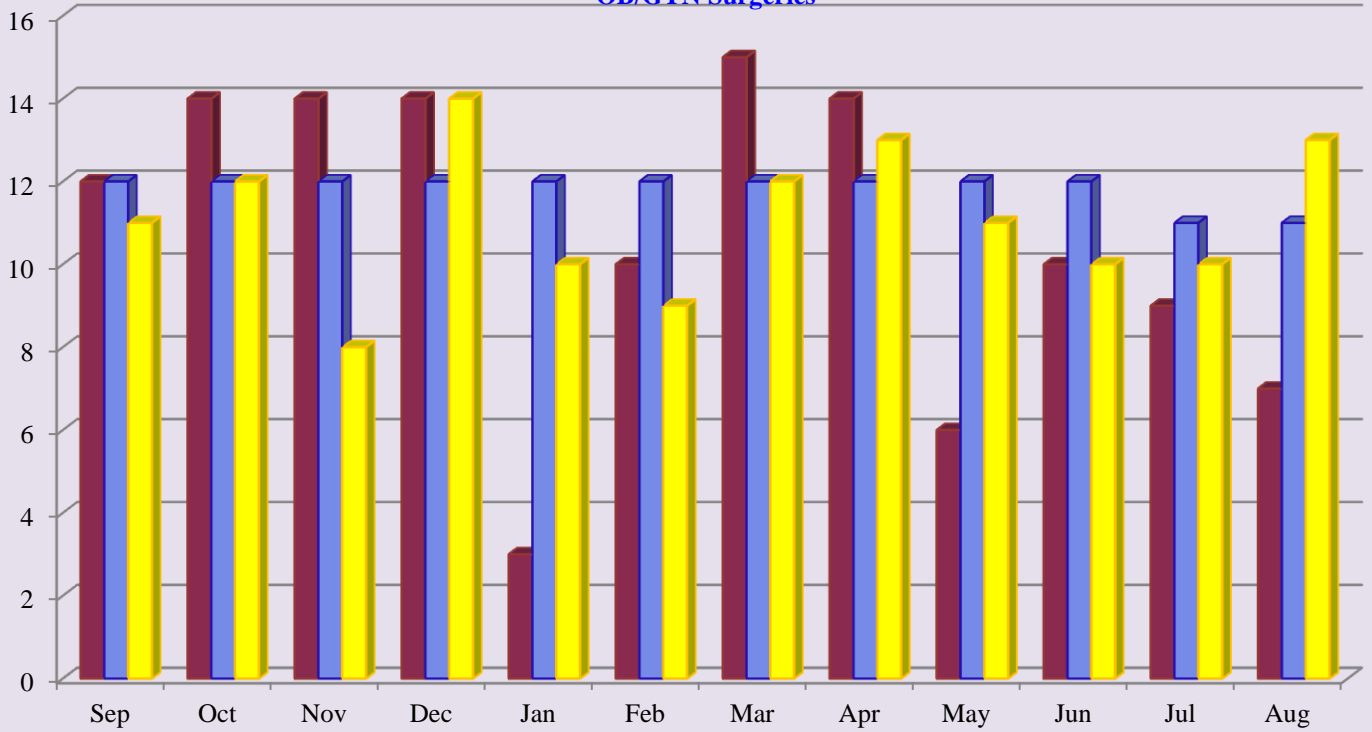
**General Surgeries**



**Curr. 12 mo. avg. = 21**

**Prev. 12 mo. avg. = 23**

**OB/GYN Surgeries**



**Curr. 12 mo. avg. = 11**

**Prev. 12 mo. avg. = 11**

■ Curr. 12 mo.

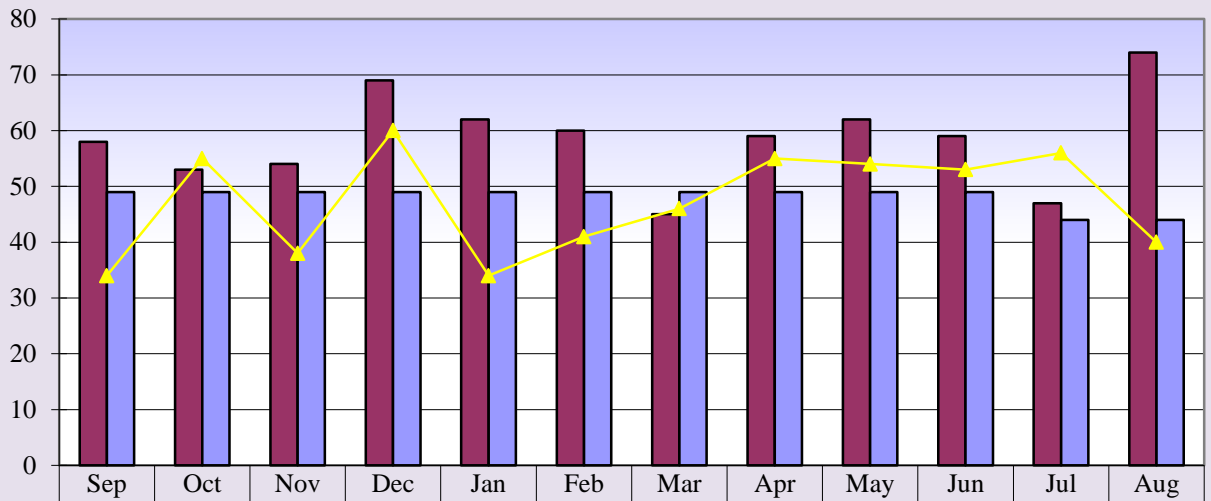
■ Current Budget

■ Prev. 12 mo.



**Memorial Hospital of Converse County  
Procedure Core Visits  
August 2016**

**Procedure Core Visits**

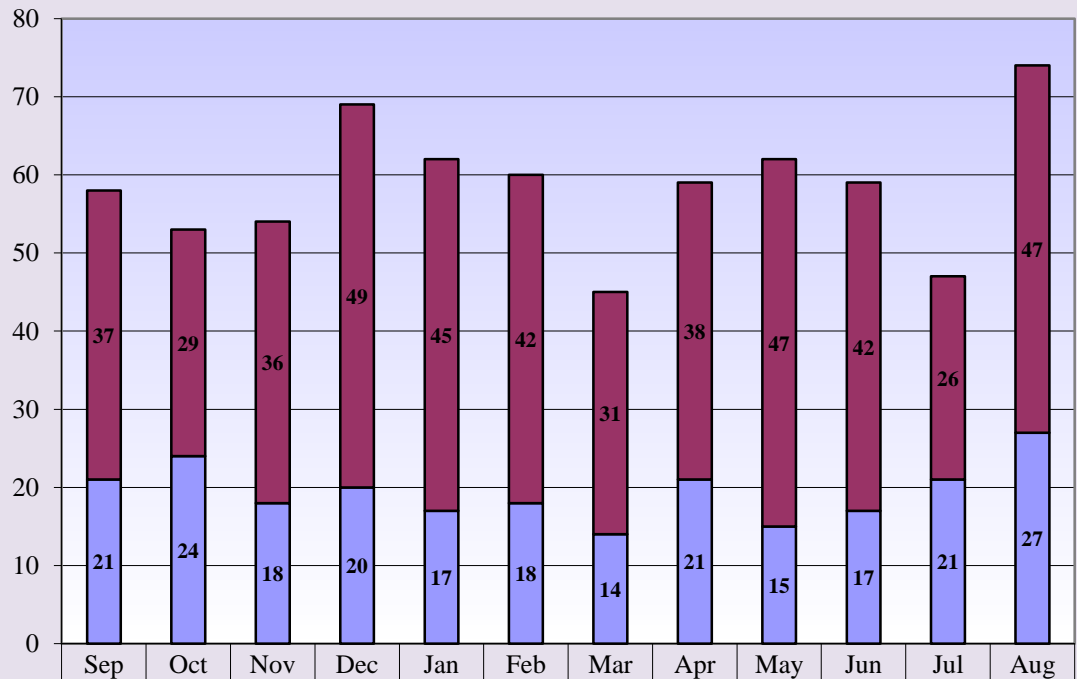


<b>Curr. 12 mo.</b>	58	53	54	69	62	60	45	59	62	59	47	74
<b>Current Budget</b>	49	49	49	49	49	49	49	49	49	49	44	44
<b>Prev. 12 mo.</b>	34	55	38	60	34	41	46	55	54	53	56	40

**Curr. 12 mo. avg. = 59**

**Prev. 12 mo. avg. = 47**

**Procedure Core Visit Types**



<b>Curr. 12 mo. Scopes</b>	37	29	36	49	45	42	31	38	47	42	26	47
<b>Curr. 12 mo. Minor Procedures</b>	21	24	18	20	17	18	14	21	15	17	21	27

**Memorial Hospital of Converse County  
Mammography Exams  
August 2016**

**Mammography Exams**



<b>■ Curr. 12 mo.</b>	108	126	120	111	75	86	117	102	95	90	79	96
<b>■ Current Budget</b>	93	93	93	93	93	93	93	93	93	93	84	84
<b>▲ Prev. 12 mo.</b>	92	112	81	92	70	95	85	81	72	97	103	122

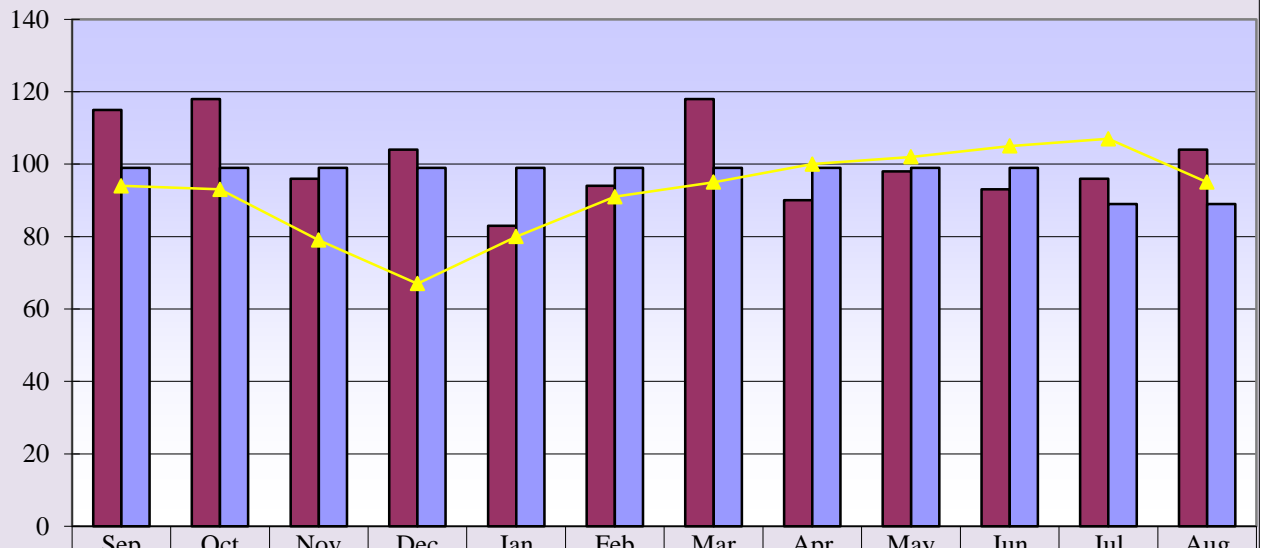
**Curr. 12 mo. avg. = 100**

**Prev. 12 mo. avg. = 92**



**Memorial Hospital of Converse County  
MRI & Cat Scans  
August 2016**

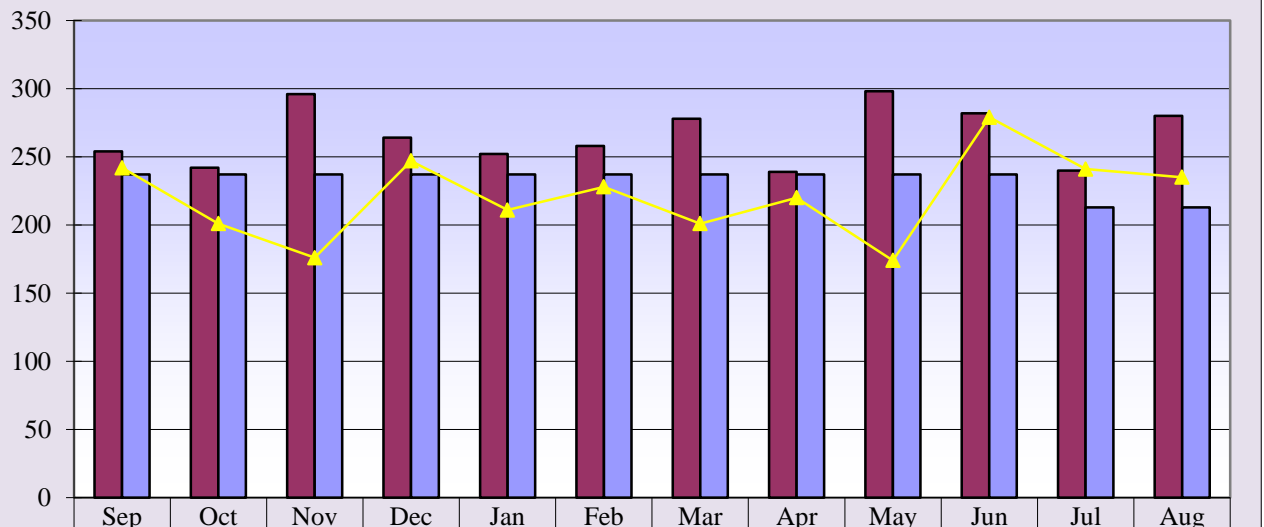
**MRI Exams**



**Curr. 12 mo. avg. = 101**

**Prev. 12 mo. avg. = 92**

**CT Exams**

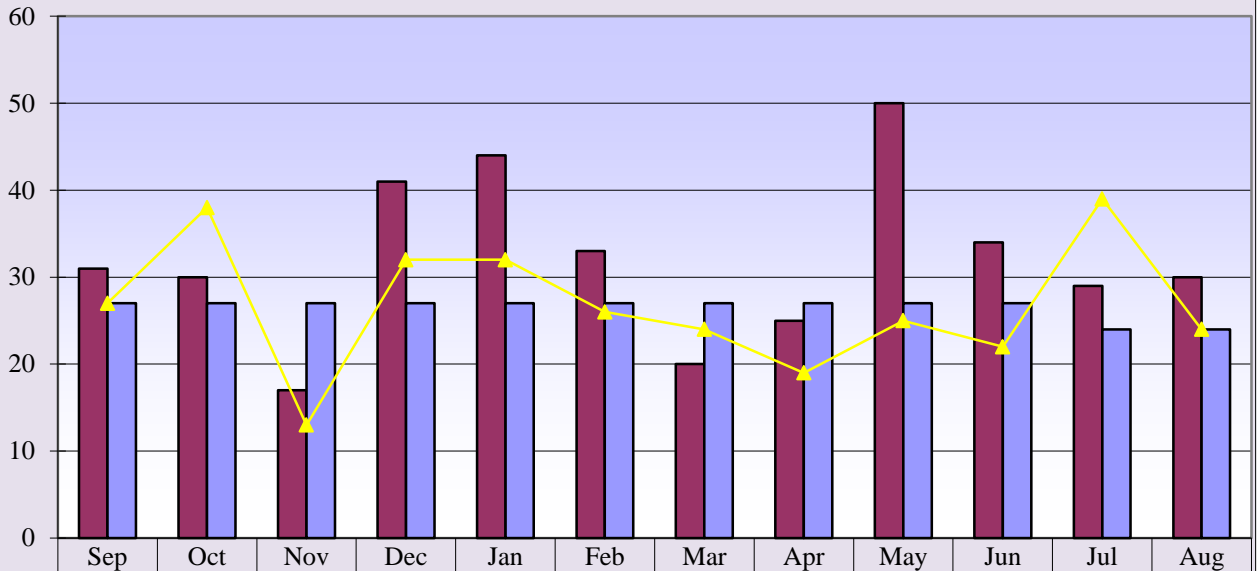


**Curr. 12 mo. avg. = 265**

**Prev. 12 mo. avg. = 221**

**Memorial Hospital of Converse County  
Nuclear Med and Ultrasound Exams  
August 2016**

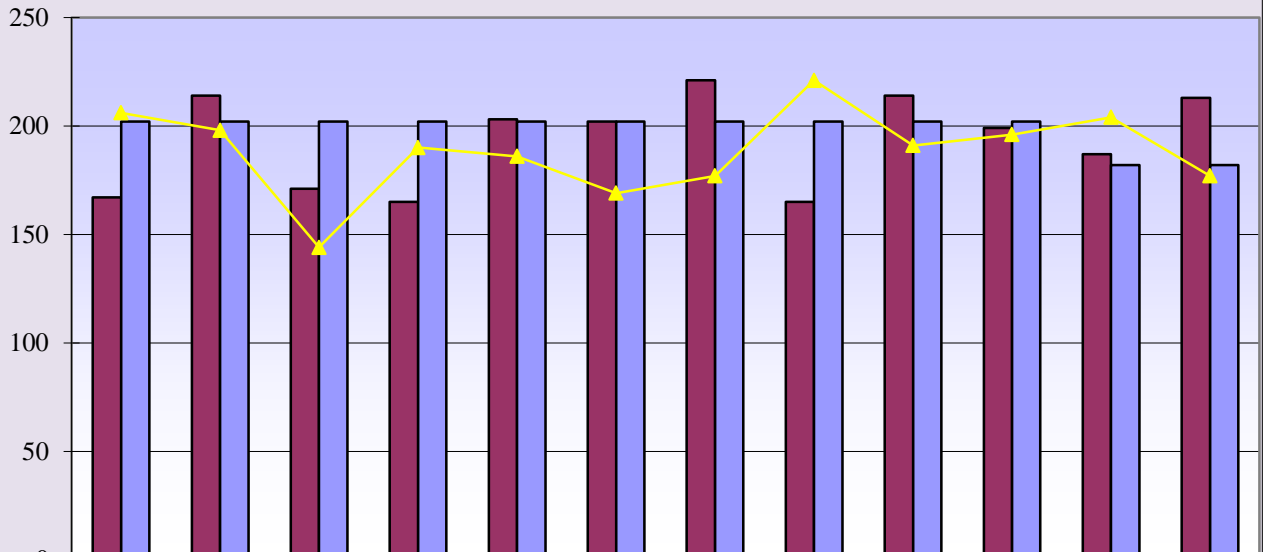
**Nuclear Medicine Exams**



**Curr. 12 mo. avg = 32**

**Prev. 12 mo. avg. = 27**

**Ultrasound Exams**

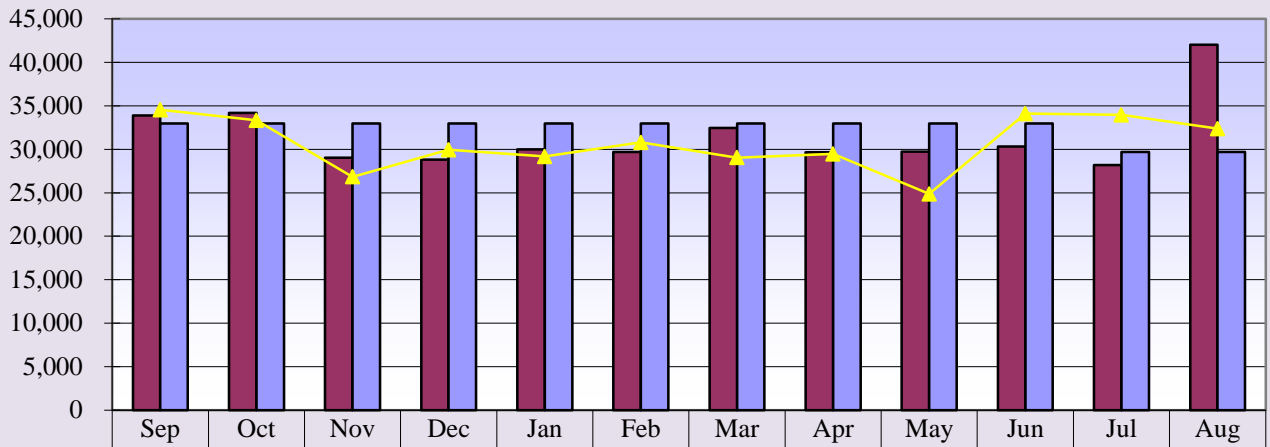


**Curr. 12 mo. avg. = 193**

**Prev. 12 mo. avg. = 188**

**Memorial Hospital of Converse County  
Lab Procedures and Other X-Ray Exams  
August 2016**

**Lab Procedures**

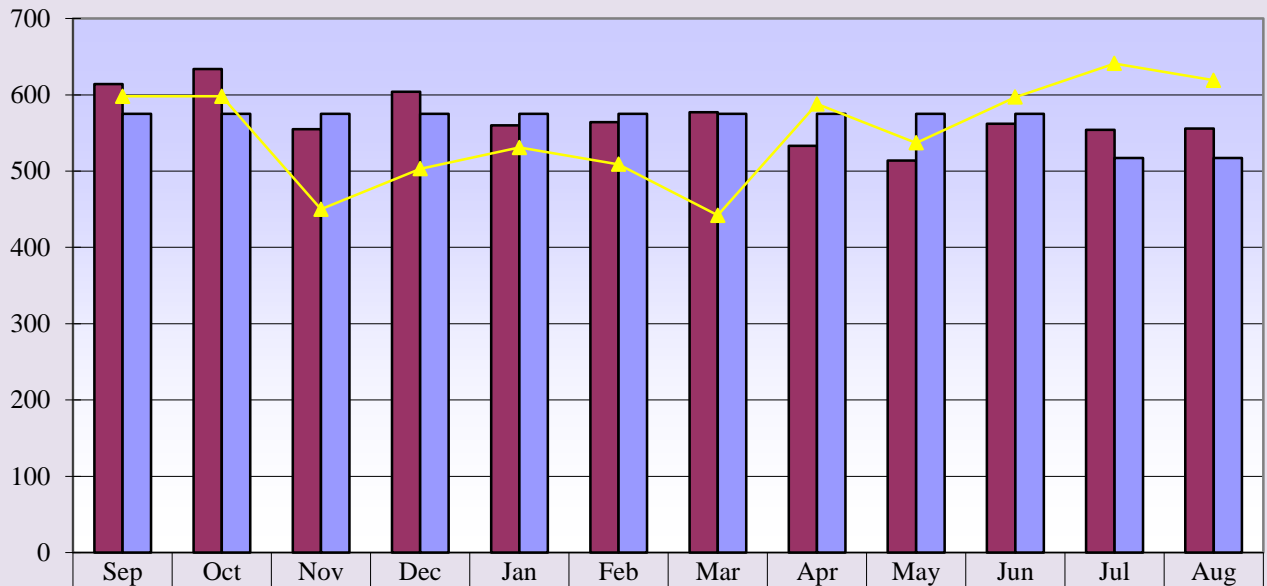


<b>■ Curr. 12 mo.</b>	33,895	34,186	29,028	28,811	29,995	29,694	32,443	29,662	29,729	30,331	28,170	42,038
<b>■ Current Budget</b>	32,981	32,981	32,981	32,981	32,981	32,981	32,981	32,981	32,981	32,981	29,682	29,682
<b>▲ Prev. 12 mo.</b>	34,548	33,336	26,829	29,939	29,174	30,794	29,041	29,470	24,854	34,102	33,960	32,375
<b>✕</b>												

**Curr. 12 mo. avg. = 31,499**

**Prev. 12 mo. avg. = 30,702**

**Total Other X-Ray Exams**



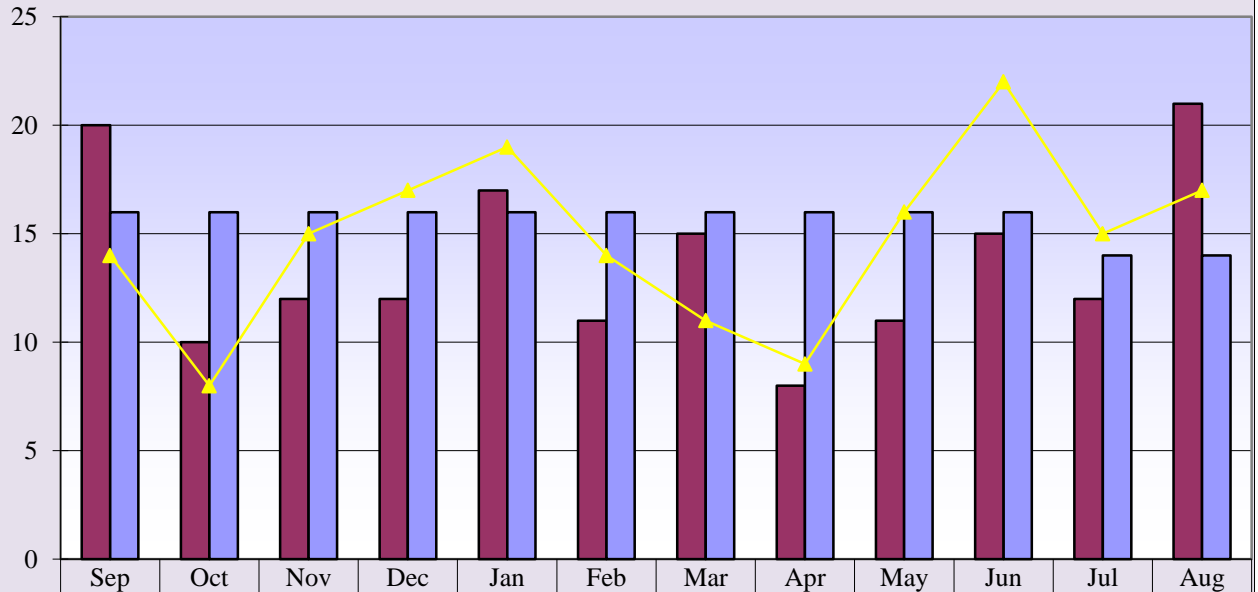
<b>■ Curr. 12 mo.</b>	614	634	555	604	560	564	577	533	514	562	554	556
<b>■ Current Budget</b>	575	575	575	575	575	575	575	575	575	575	517	517
<b>▲ Prev. 12 mo.</b>	598	598	450	503	531	509	442	588	537	597	641	619

**Curr. 12 mo. avg. = 569**

**Prev. 12 mo. avg. = 551**

**Memorial Hospital of Converse County  
Newborns and Net A/R Days  
August 2016**

**Newborns**

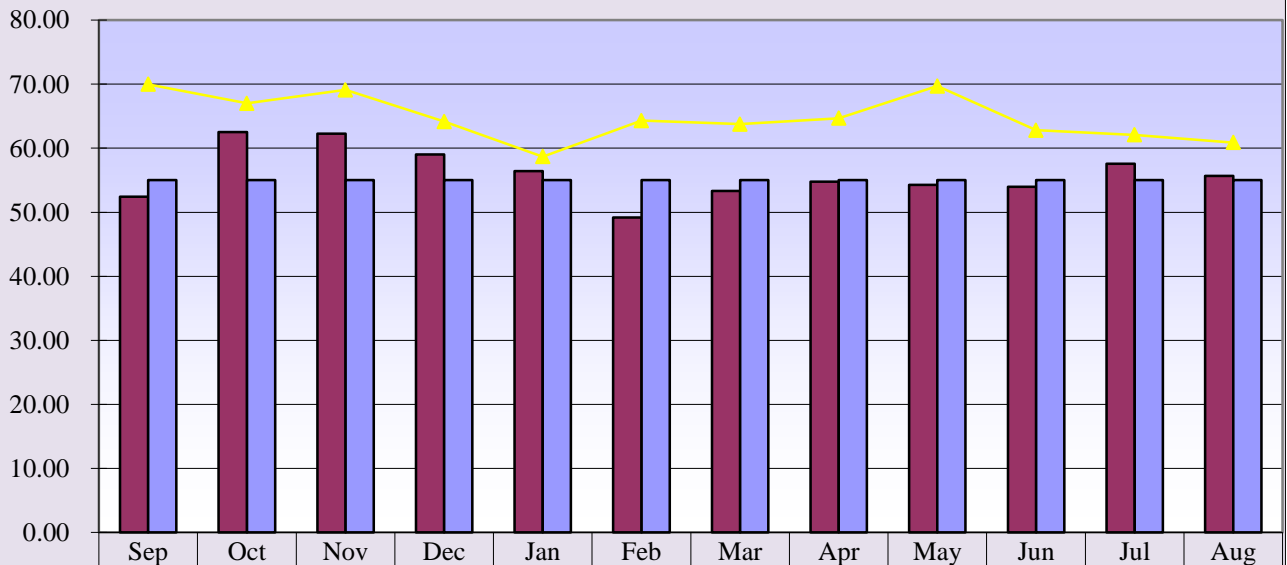


	Sep	Oct	Nov	Dec	Jan	Feb	Mar	Apr	May	Jun	Jul	Aug
Curr. 12 mo.	20	10	12	12	17	11	15	8	11	15	12	21
Current Budget	16	16	16	16	16	16	16	16	16	16	14	14
Prev. 12 mo.	14	8	15	17	19	14	11	9	16	22	15	17

**Curr. 12 mo. avg. = 14**

**Prev. 12 mo. avg. = 15**

**Net Days of Revenue in A/R**

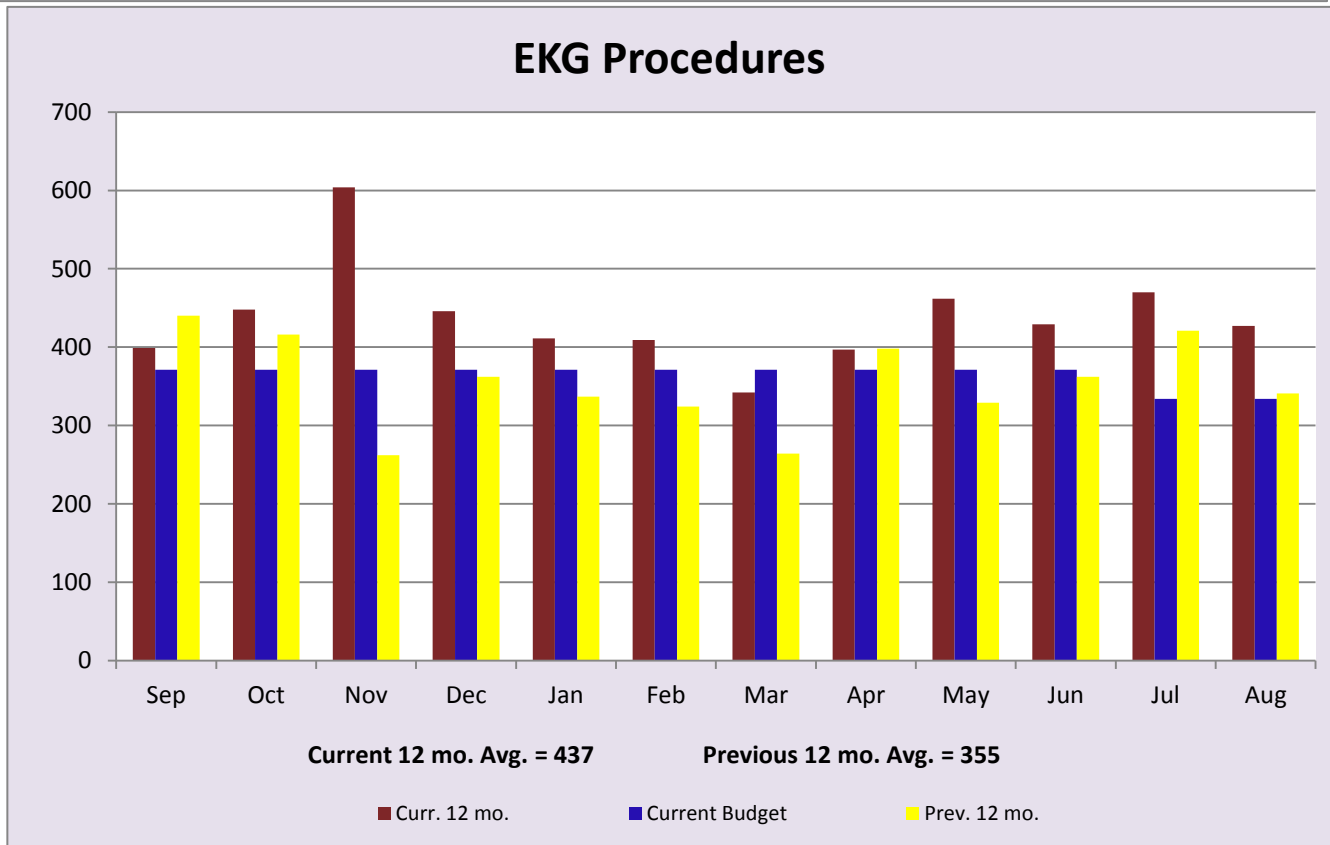
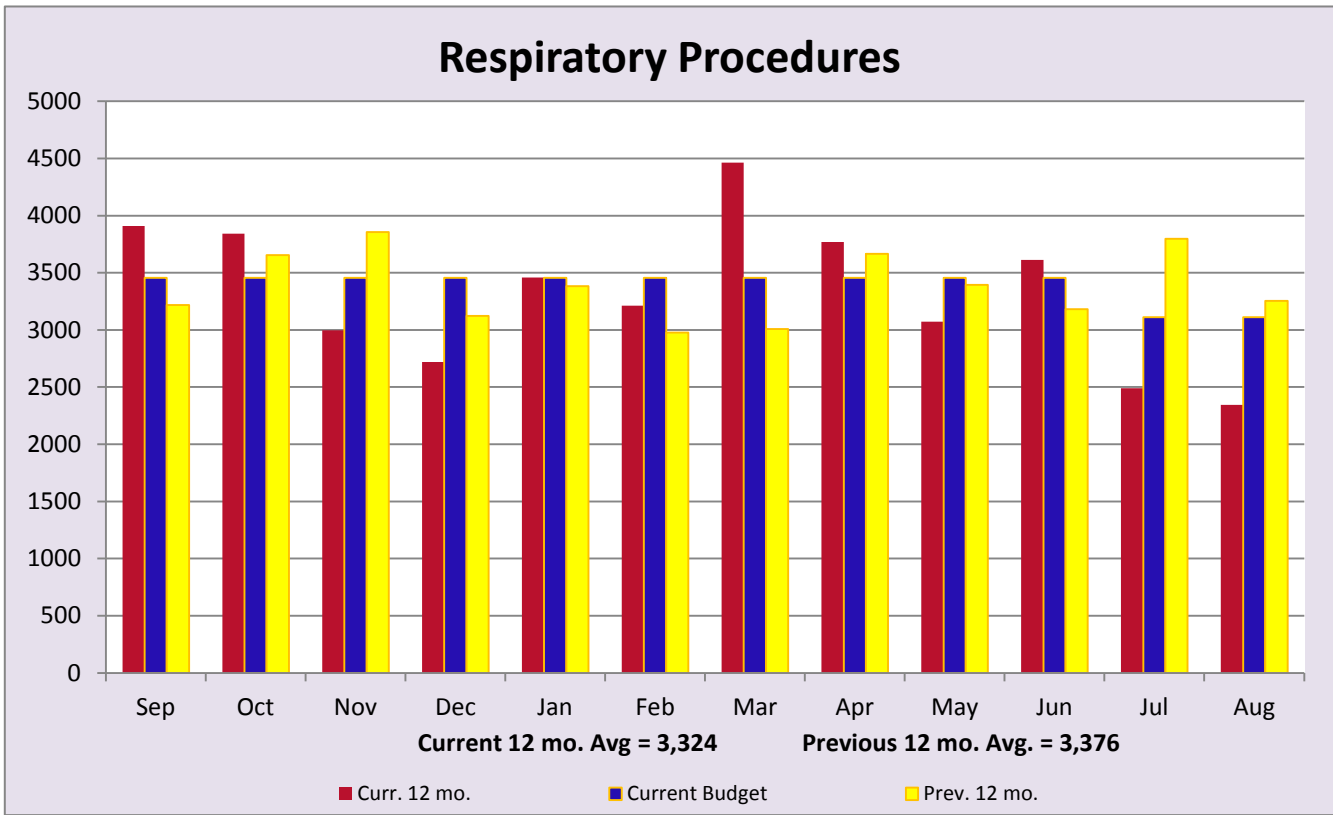


	Sep	Oct	Nov	Dec	Jan	Feb	Mar	Apr	May	Jun	Jul	Aug
Curr. 12 mo.	52.45	62.51	62.27	59.01	56.40	49.16	53.30	54.78	54.26	53.98	57.59	55.66
Current Budget	55.00	55.00	55.00	55.00	55.00	55.00	55.00	55.00	55.00	55.00	55.00	55.00
Prev. 12 mo.	69.98	67.01	69.09	64.15	58.68	64.29	63.76	64.67	69.70	62.80	62.07	60.87

**Curr. 12 mo. avg. = 55.95**

**Prev. 12 mo. avg. = 64.76**

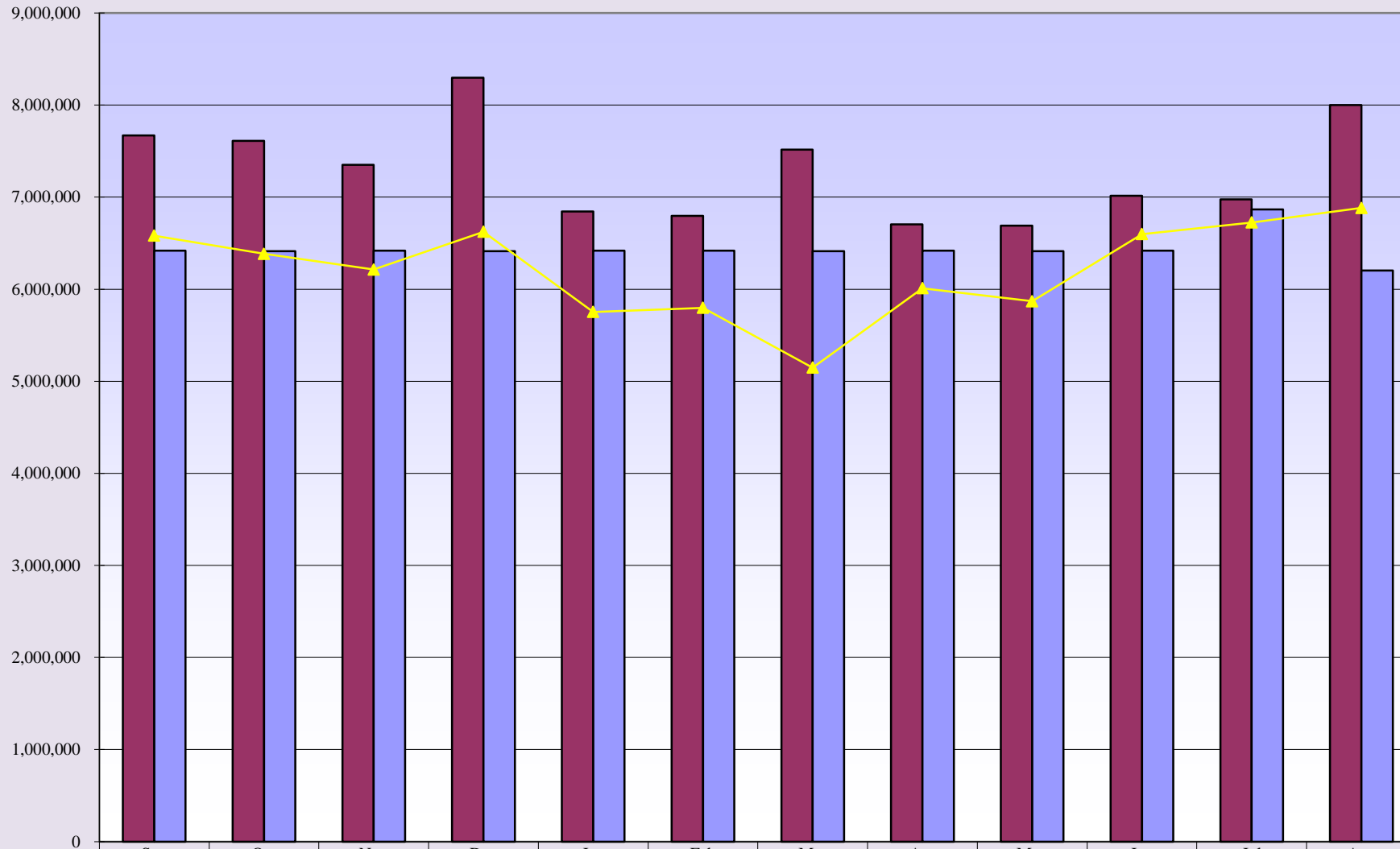
Memorial Hospital of Converse County  
Respiratory and EKG Procedures  
August 2016





**Memorial Hospital of Converse County  
Hospital Patient Revenues  
August 2016**

**Hospital Patient Revenues**



**Curr. 12 mo. avg. = \$7,289,075**

**Prev. 12 mo. avg. = \$6,215,864**

**Memorial Hospital of Converse County  
Income Statement Summary  
Budget Variance Report**

<b>Current Month</b>			<b>Year to Date</b>			<b>Prior Year YTD</b>		
<b>August 2016</b>	<b>Budget</b>	<b>Variance Amount</b>	<b>August</b>	<b>YTD Thru August 2016</b>	<b>YTD Budget</b>	<b>Variance Amount</b>	<b>YTD Thru August 2015</b>	<b>Change From Prior YTD</b>
			<b>Patient Revenue</b>					
\$1,966,053	\$1,649,311	\$316,742	<b>Inpatient</b>	\$3,747,883	\$3,475,335	\$272,548	\$3,506,254	\$241,629
4,655,056	3,282,372	1,372,684	<b>Outpatient</b>	8,555,057	6,916,432	1,638,625	7,431,796	1,123,261
1,380,959	1,270,503	110,456	<b>Physician Clinics</b>	2,675,290	2,677,145	(1,855)	2,669,887	5,403
<u>\$8,002,069</u>	<u>\$6,202,186</u>	<u>\$1,799,883</u>	<b>Total Patient Revenue</b>	<u>\$14,978,230</u>	<u>\$13,068,912</u>	<u>\$1,909,318</u>	<u>\$13,607,937</u>	<u>\$1,370,293</u>
			<b>Deductions From Revenue</b>					
1,008,459	575,343	433,116	<b>Medicare</b>	1,864,460	1,212,329	652,131	1,017,375	847,085
655,918	375,035	280,883	<b>Medicaid</b>	1,106,812	790,252	316,560	585,668	521,144
100,621	153,425	(52,804)	<b>Worker's Compensation</b>	214,278	323,288	(109,010)	209,391	4,887
652,170	541,142	111,028	<b>Other Contractuals</b>	1,201,267	1,140,264	61,003	1,136,917	64,350
205,046	145,069	59,977	<b>Other</b>	344,902	305,682	39,220	279,712	65,190
<u>\$2,622,214</u>	<u>\$1,790,014</u>	<u>\$832,200</u>	<b>Total Deductions</b>	<u>\$4,731,719</u>	<u>\$3,771,815</u>	<u>\$959,904</u>	<u>\$3,229,063</u>	<u>\$1,502,656</u>
5,379,855	4,412,172	967,683	<b>Net Patient Revenue</b>	10,246,511	9,297,097	949,414	10,378,874	(132,363)
101,941	129,635	(27,694)	<b>Other Operating Revenue</b>	217,497	259,272	(41,775)	214,684	2,813
<u>\$5,481,796</u>	<u>\$4,541,807</u>	<u>\$939,989</u>	<b>Total Operating Revenue</b>	<u>\$10,464,008</u>	<u>\$9,556,369</u>	<u>\$907,639</u>	<u>\$10,593,558</u>	<u>(\$129,550)</u>
			<b>Operating Expenses</b>					
2,223,411	2,208,197	15,214	<b>Salaries &amp; Wages</b>	4,705,304	4,652,987	52,317	4,739,333	(34,029)
560,973	544,910	16,063	<b>Benefits</b>	1,267,355	1,148,205	119,150	1,008,826	258,529
571,025	497,775	73,250	<b>Supplies</b>	1,058,113	1,048,870	9,243	1,043,865	14,248
107,704	93,196	14,508	<b>Lease &amp; Rentals</b>	205,509	196,372	9,137	159,776	45,733
94,670	89,942	4,728	<b>Other Expenses</b>	220,020	189,479	30,541	137,387	82,633
1,850	3,835	(1,985)	<b>Legal</b>	27,216	8,082	19,134	1,800	25,416
8,188	31,611	(23,423)	<b>Travel &amp; Education</b>	17,599	66,623	(49,024)	44,666	(27,067)
135,752	96,003	39,749	<b>Maintenance &amp; Repair</b>	224,620	202,293	22,327	201,537	23,083
31,397	15,803	15,594	<b>Physician Fees</b>	65,180	33,299	31,881	28,411	36,769
20,714	9,205	11,509	<b>Interest</b>	41,250	19,397	21,853	24,787	16,463
41,006	42,584	(1,578)	<b>Professional Fees</b>	80,819	89,731	(8,912)	112,144	(31,325)
123,981	103,327	20,654	<b>Purchased Services</b>	223,316	217,723	5,593	236,378	(13,062)
26,463	32,986	(6,523)	<b>Insurance</b>	47,115	69,507	(22,392)	67,460	(20,345)
66,772	44,969	21,803	<b>Utilities</b>	100,518	94,757	5,761	99,820	698
351,365	338,455	12,910	<b>Depreciation</b>	713,587	713,173	414	740,172	(26,585)
609,365	452,604	156,761	<b>Indigent Care</b>	1,372,674	953,698	418,976	1,257,744	114,930
<u>\$4,974,634</u>	<u>\$4,605,402</u>	<u>\$369,232</u>	<b>Total Expenses</b>	<u>\$10,370,194</u>	<u>\$9,704,196</u>	<u>\$665,998</u>	<u>\$9,904,106</u>	<u>\$466,088</u>
507,162	(63,595)	570,757	<b>Operating Income (Loss)</b>	93,814	(147,827)	241,641	689,452	(595,638)
			<b>Non-Operating Revenue</b>					
90,768	90,625	142	<b>County - Indigent Care Reimbursement</b>	181,575	181,251	325	221,380	(39,805)
30,208	30,208	0	<b>County - Ambulance Reimbursement</b>	60,417	60,417	0	94,877	(34,461)
12,294	34,030	(21,736)	<b>Other Non-Operating</b>	74,149	68,057	6,092	67,543	6,606
0	0	0	<b>Non-Operating Expense</b>	0	0	0	0	0
<u>\$640,432</u>	<u>\$91,268</u>	<u>\$549,164</u>	<b>Net Income/(Loss)</b>	<u>\$409,955</u>	<u>\$161,897</u>	<u>\$248,058</u>	<u>\$1,073,252</u>	<u>(\$663,297)</u>

**Memorial Hospital of Converse County  
Financial and Statistical Highlights  
August 2016**

Page #

**Patient Volumes**

IP Daily Census.....	At 7.84 up 1.39 from August 2015 - up 1.58 from July 2016	1-2
Surgeries.....	At 94 down 6 from August 2015 - up 7 from July 2016	6-7
Radiology Exams.....	At 1,279 up 7 from August 2015 - up 94 from July 2016	9-12
Laboratory Tests.....	At 42,038 up 9,663 from August 2015 - up 13,868 from July 2016	12
Emer. Rm. Visits.....	At 430 down 150 from August 2015 - up 21 from July 2016	5

**Income Statement**

Gross Patient Revenue for the month was \$8,002,000 compared to \$6,882,000 last August and \$6,976,000 last month. Net Income for August is \$640,000 compared to \$383,000 last year and **(\$230,000)** last month. 15

Monthly Revenue - over budget by \$1,799,000

The departments that are under budget by \$10,000 or more are as follows:

- ICU - 21,000
- Hospitalists - 30,000
- Surgery - 36,000

Deductions From Revenue - Over budget by \$832,000

Monthly Expense Variances - Over budget by \$369,000

Salaries & Wages - 15,000

Benefits - 16,000

Supplies - 73,000

Lease & Rentals - 14,000

- Laboratory - 74,000
- Pharmacy Drugs - 16,000

- IS - 11,000
- Administration - 1,600
- Cardiopulmonary - 1,400

Other - 4,700

Maintenance & Repairs - 39,000

- Practitioners Collection - 3,000
- Business Office Collection - 8,600
- Public Relations Dues - 5,000

- Cat Scan - 16,000
- Nuclear Medicine - 11,000
- Facilities - 3,000

Interest - 11,000

Physician Fees - 15,000

Accrual for CD Loan

- ER - 8,400
- Radiologists - 6,400

Utilities - 21,000

Purchased Services - 20,000

- Telephone - 1,300
- Electric - 2,500
- Natural Gas - 15,300

- Radiology - 6,000
- Lab - 9,000
- E-Care - 10,000

Depreciation - 12,000

Indigent Care - 156,000

Building - 19,000

**Cash Status**

Cash balances as of August 31, 2016 are \$11,290,723.  
This equates to 72.49 days of expenses on hand.

**Accounts Receivable**

Net Accounts Receivable days are at 55.66 days for the end of August compared to 59.70 last year and 57.49 last month.

**Memorial Hospital of Converse County  
Statistics  
For The Period Ended August 31, 2016**

Monthly						Year to Date					
Aug 2016	Aug 2015	Variance From Prior Aug	Budget	Variance Amount	%	YTD Thru Aug 2016	YTD Thru Aug 2015	Variance From Prior YTD	YTD Budget	Variance Amt.	%
94	63	31	67	27	40.3%	167	138	29	134	33	24.6%
6	8	(2)	4	2	50.0%	7	12	(5)	8	(1)	-12.5%
100	71	29	71	29	40.8%	174	150	24	142	32	22.5%
243	174	69	176	67	38.1%	437	412	25	352	85	24.1%
51	71	(20)	50	1	2.0%	74	119	(45)	100	(26)	-26.0%
294	245	49	226	68	30.1%	511	531	(20)	452	59	13.1%
21	17	4	14	7	50.0%	33	32	1	28	5	17.9%
42	26	16	23	19	82.6%	63	52	11	46	17	37.0%
94	100	(6)	88	6	6.8%	181	205	(24)	176	5	2.8%
3,684	3,265	419	3,130	554	17.7%	6,651	6,750	(99)	6,260	391	6.2%
430	580	(150)	518	(88)	-17.0%	839	1,159	(320)	1,036	(197)	-19.0%
4,114	3,845	269	3,648	466	12.8%	7,490	7,909	(419)	7,296	194	2.7%
325	328	(3)	334	(9)	-2.6%	325	327	(2)	334	(9)	-2.7%

Financial Ratios	August 2016	August 2015	YTD	US	WY	Misc. Measurements	YTD - 16	YTD - 15	Variance From Prior Year	WY	Variance From WY
Days Cash on Hand YTD	72	82	N/A	69	107	Total Revenue per FTE	\$276,414	\$230,813	\$45,601	\$145,000	\$131,414
Operating Margin	9.08%	3.98%	0.80%	0.99%	0.77%	Contractual Deductions	31.61%	21.80%	9.81%	26.70%	4.91%
Net Margin	11.52%	7.17%	3.82%	2.51%	6.79%	Inpatient Revenue %	30.44%	37.68%	-7.24%	31.41%	-0.97%
Current Ratio	3.53	5.16	N/A	2.29	3.89	Outpatient Revenue %	69.56%	62.32%	7.24%	66.90%	2.66%
Gross A/R Days	53.65	65.54				Average Length of Stay	2.61	2.86	(0.25)	3.30	(0.69)
Net A/R Days	55.66	59.70		54.20	57.94	Medicare Inp. Payer Mix	33.41%	32.00%	1.41%	31.00%	2.41%
FTEs per Adjusted Occupied Bed - Excluding MOB			11.07	With MOB	11.51	Average I/P Daily Census	7.05	8.40	(1.35)	3.50	3.55
Medicare Rural Hospital Flexibility Program Monitoring Team - US CAH Median-2013						Salaries to Total Expense	45.37%	50.21%	-4.84%	46.32%	-0.95%
Medicare Rural Hospital Flexibility Program Monitoring Team -WY CAH Medium-2013						Benefits as % of Salaries	26.93%	20.99%	5.94%		

**Memorial Hospital of Converse County**  
**Balance Sheet**  
**August 31, 2016**

	<b>August 2016</b>	<b>August 2015</b>
<b>ASSETS</b>		
<b>CURRENT ASSETS</b>		
Cash On Hand And In Banks	\$4,608,418	\$4,578,596
Certificates Of Deposit - Unrestricted	182,305	68,963
<b>Total Cash Assets</b>	<b>\$4,790,723</b>	<b>\$4,647,559</b>
<b>Assets Whose Use is Restricted</b>		
Certificates of Deposit Securing Loan	6,500,000	7,500,000
Reserve Checking - CCB Contracts	0	12,413
<b>Total Restricted Assets</b>	<b>\$6,500,000</b>	<b>\$7,512,413</b>
Accounts Receivable (Gross)	12,507,276	13,898,274
Uncollectable Accts. & Contratural. Adj.	(3,616,760)	(4,148,897)
<b>Net Patient Accounts</b>	<b>\$8,890,516</b>	<b>\$9,749,377</b>
Due From Physicians	80,273	113,575
Inventories Of Supplies	967,946	1,048,049
Other Current Assets	908,414	3,611,870
<b>Total Current Assets</b>	<b>\$22,137,872</b>	<b>\$26,682,843</b>
<b>LAND, BUILDING AND EQUIPMENT, net</b>	<b>\$30,751,700</b>	<b>\$29,771,486</b>
<b>OTHER ASSETS</b>		
Investment - Big Country Rehab	168,980	218,747
Issue Cost to Capitalize	123,452	0
<b>Total Other Assets</b>	<b>\$292,432</b>	<b>\$218,747</b>
<b>Total Assets</b>	<b>\$53,182,004</b>	<b>\$56,673,076</b>
<b>LIABILITIES AND FUND EQUITY</b>		
<b>CURRENT LIABILITIES</b>		
Accounts Payable	\$630,153	\$769,257
Accrued Salaries	2,542,083	2,609,239
Accrued Self Funded Health Insurance	(21,748)	0
Accrued Taxes And Deductions	662,076	516,547
Current Portion Of Capital Leases	53,777	259,761
Current Portion of CD Secured Note	1,000,000	1,000,000
Contingent Liability-(Patient Contracts)	0	12,413
<b>Total Current Liabilities</b>	<b>\$4,866,340</b>	<b>\$5,167,217</b>
<b>OTHER LIABILITIES</b>		
Long Term EIB Accrual	0	89,297
Deferred Loss On Early Retirement Of Bonds	(455,014)	(499,808)
Medicare Cost Report Settlement	0	0
Long Term CD Secured Note Obligations	6,500,000	6,500,000
Long Term Capital Lease Obligations	31,298	861,915
<b>Total Other Liabilities</b>	<b>\$6,076,284</b>	<b>\$6,951,404</b>
<b>Total Liabilities</b>	<b>\$10,942,624</b>	<b>\$12,118,621</b>
<b>FUND EQUITY</b>		
Fund Balance	\$41,829,425	\$43,481,205
Net Income	409,955	1,073,250
<b>Total Fund Balance</b>	<b>\$42,239,380</b>	<b>\$44,554,455</b>
<b>Total Liabilities And Fund Equity</b>	<b>\$53,182,004</b>	<b>\$56,673,076</b>

Cash Flow Statement for August 2016 and FYTD 2017

<b>Cash Flow From Operations</b>	<b><u>August 2016</u></b>	<b><u>FYTD 2017</u></b>
Net Earnings/(Loss)	\$630,455	\$399,978
<b><u>Additions/(Subtractions) to Cash</u></b>		
Depreciation/Non-cash Interest	351,365	713,587
Decrease/(Increase) in Accounts Receivable	(182,077)	(907,942)
(Decrease)/Increase in Accounts Payable	(1,742,225)	(1,308,539)
Decrease/(Increase) in Inventory	116	(25,114)
<b>Net Cash Flow From Operations</b>	<b><u>(\$942,366)</u></b>	<b><u>(\$1,128,030)</u></b>
 <b>Cash Flow from Capital Purchases</b>		
Equipment, Fixed Assets	(14,036)	(57,879)
Loan Advance	0	0
 <b>Cash Flow from Financing</b>		
Notes Payable	<u>(22,284)</u>	<u>(826,885)</u>
 <b>Cash Flow for the Month Ending:      Aug 2016</b>	<b><u><u>(\$978,686)</u></u></b>	<b><u><u>(\$2,012,794)</u></u></b>

October

	1	2	3	4	5	6	7	8	9	10	11	12	13	14	15	16	17	18	19	20	21	22	23	24	25	26	27	28	29	30	31
IP	7	5	5	4	5	5	5	6	6	4	10	12	11	2	0	0	2	8	10	12	10	10	7	9	10	8	8	7	6	5	3
OBS	0	2	1	4	0	1	3	0	1	2	1	1	2	0	0	0	1	4	1	2	0	0	0	1	4	2	0	1	0	0	1
SW	2	2	2	1	1	1	1	1	1	1	1	1	2	2	2	1	1	1	1	1	1	1	1	1	2	2	2	2	2	2	4
	9	9	8	9	6	7	9	7	8	7	12	14	14	4	2	5	13	12	15	11	11	8	11	16	12	10	10	8	7	8	

Days Recorded: 31

202 6.5  
35 1.1  
47 1.5  
9.2

November

	1	2	3	4	5	6	7	8	9	10	11	12	13	14	15	16	17	18	19	20	21	22	23	24	25	26	27	28	29	30	31
IP	4	9	8	11	11	11	8	11	10	7	5	4	5	10	13	9	8	9	8	7	8	9	11	12	7	6	4	6	16	16	
OBS	4	0	1	4	0	0	3	1	1	2	0	0	1	1	2	2	0	0	0	0	0	3	2	0	0	0	0	1	0	1	
SW	4	3	2	2	2	2	3	4	2	3	4	3	3	3	3	2	3	3	3	3	3	5	5	4	4	6	6	6	6	5	5
	12	12	11	17	13	13	14	16	13	12	9	7	9	14	18	13	11	12	11	10	13	17	17	16	13	12	10	13	21	22	0

Days Recorded: 30

263 8.8  
29 1.0  
109 3.6  
13.4

December

	1	2	3	4	5	6	7	8	9	10	11	12	13	14	15	16	17	18	19	20	21	22	23	24	25	26	27	28	29	30	31
IP	10	7	6	8	7	9	14	12	15	7	7	8	9	12	11	7	4	4	10	12	8	7	5	5	8	5	8	11	9	6	8
OBS	0	0	0	0	2	5	0	1	0	0	1	0	1	0	1	0	0	1	2	2	0	1	1	0	0	1	0	0	2	1	0
SB	5	5	5	5	3	2	3	4	4	4	3	3	1	2	2	1	1	1	1	1	1	1	2	2	2	2	3	3	3	4	4

Days Recorded: 31

259 8.4  
22 0.77  
81 2.6  
11.7

January

	1	2	3	4	5	6	7	8	9	10	11	12	13	14	15	16	17	18	19	20	21	22	23	24	25	26	27	28	29	30	31	
IP	6	5	8	8	13	12	11	9	8	8	7	8	3	2	4	7	10	10	11	10	13	13	14	16	7	9	8	9	8	9	12	
OBS	0	0	1	0	1	1	0	0	1	2	0	1	3	1	0	0	3	2	4	2	1	1	0	2	0	1	1	0	0	1	2	
SB	3	4	4	3	3	2	4	4	6	4	3	3	4	5	5	5	3	3	2	3	3	3	3	3	3	6	4	3	3	3	4	4

Days Recorded: 31

278 9.0  
31 1.0  
112 3.6  
13.6

February

	1	2	3	4	5	6	7	8	9	10	11	12	13	14	15	16	17	18	19	20	21	22	23	24	25	26	27	28	29	30	31	
IP	13	13	7	8	7	10	11	12	8	9	1	2	4	9	14	18	20	16	13	6	10	8	6	5	4	5	8	13				
OBS	1	1	1	0	3	1	1	1	3	1	0	0	4	3	0	1	1	1	0	1	2	1	1	0	0	0	0	0				
SB	4	3	4	3	3	2	3	2	3	5	4	4	3	2	2	2	3	4	4	2	2	2	2	2	2	2	2	3	3			

Days Recorded: 28

260 9.3  
28 1.0  
80 2.9  
13.1

March

	1	2	3	4	5	6	7	8	9	10	11	12	13	14	15	16	17	18	19	20	21	22	23	24	25	26	27	28	29	30	31
IP	11	12	5	10	7	4	4	3	3	5	5	3	9	11	7	7	8	4	5	8	11	11	11	12	11	7	7	9	8	10	12
OBS	0	2	1	0	0	1	1	1	1	0	0	1	1	1	0	2	0	0	0	0	1	1	1	0	0	1	1	3	3	2	3
SB	4	4	4	4	4	3	2	2	3	3	3	3	3	3	3	1	1	1	1	2	2	3	2	2	1	1	2	2	2	2	2

Days Recorded: 31

240 7.7  
28 0.9  
75 2.4  
11.1

April

	1	2	3	4	5	6	7	8	9	10	11	12	13	14	15	16	17	18	19	20	21	22	23	24	25	26	27	28	29	30	31
IP	12	14	11	15	12	10	12	7	5	3	5	4	6	5	3	1	2	4	8	8	4	3	7	6	8	14	9	13	12	8	
OBS	0	1	2	2	1	1	0	0	0	0	3	0	1	1	0	0	0	1	0	2	0	0	0	0	2	0	0	2	0	2	
SB	2	2	2	2	2	2	1	1	1	1	1	1	2	2	2	2	2	2	2	2	3	3	3	4	4	3	4	4	4	5	

Days Recorded: 30

205 6.8  
21 0.7  
72 2.4  
9.9

May

	1	2	3	4	5	6	7	8	9	10	11	12	13	14	15	16	17	18	19	20	21	22	23	24	25	26	27	28	29	30	31
IP	12	14	11	15	12	10	12	7	5	3	5	4	6	5	3	1	2	4	8	8	4	3	7	6	8	14	9	13	12	8	
OBS	0	1	2	2	1	1	0	0	0	0	3	0	1	1	0	0	0	1	0	2	0	0	0	2	0	0	2	0	2		
SB	2	2	2	2	2	2	1	1	1	1	1	2	2	2	2	2	2	2	2	2	3	3	3	4	4	3	4	4	4	5	

Days Recorded: 31

205 6.6  
21 0.7  
72 2.3  
9.6

												Mo's Rec	1						
	Jul.	Aug.	Sep.	Oct.	Nov.	Dec.	Jan.	Feb.	Mar.	Apr.	May	June	Average						
IP	6.26	7.84											7.05						
OBS	0.77	0.90											0.84						
SB	0.74	1.65											1.20						
	7.77	10.39	0.00	0.00	0.00	0.00	0.00	0.00	0.00	0.00	0.00	0.00	9.08						
Hi	16	22											0.00						
Lo	2	7																	

Statistics	August 2016	August	Prior Aug	Thru Aug	August 2015	Aug 2016	Aug 2015	Prior Aug						
	<u>Sep</u>	<u>Oct</u>	<u>Nov</u>	<u>Dec</u>	<u>Jan</u>	<u>Feb</u>	<u>Mar</u>	<u>Apr</u>	<u>May</u>	<u>Jun</u>	<u>Jul</u>	<u>Aug</u>		
Curr. 12 mo.	109	121	110	124	93	81	101	96	72	91	87	94		98
Current Budget	100	100	100	100	100	100	100	100	100	100	90	90		
Prev. 12 mo.	85	110	89	127	82	97	66	92	101	103	105	100		96
Surgeries														
	<u>Sep</u>	<u>Oct</u>	<u>Nov</u>	<u>Dec</u>	<u>Jan</u>	<u>Feb</u>	<u>Mar</u>	<u>Apr</u>	<u>May</u>	<u>Jun</u>	<u>Jul</u>	<u>Aug</u>		
Curr. 12 mo.	7.77	6.68	8.60	6.65	7.71	6.86	7.35	6.93	6.32	7.43	6.26	7.84		7.20
Current Budget	7.32	7.32	7.32	7.32	7.32	7.32	7.32	7.32	7.32	7.32	6.59	6.59		
Prev. 12 mo.	7.23	6.61	6.83	6.29	7.32	8.14	5.00	6.50	6.74	7.67	8.52	6.45		6.94
IP Daily Census														
	<u>Sep</u>	<u>Oct</u>	<u>Nov</u>	<u>Dec</u>	<u>Jan</u>	<u>Feb</u>	<u>Mar</u>	<u>Apr</u>	<u>May</u>	<u>Jun</u>	<u>Jul</u>	<u>Aug</u>		
Curr. 12 mo.	254	242	296	264	252	258	278	239	298	282	240	280		265
Current Budget	237	237	237	237	237	237	237	237	237	237	213	213		
Prev. 12 mo.	242	201	176	247	211	228	201	220	174	279	241	235		221
CTs														
	<u>Sep</u>	<u>Oct</u>	<u>Nov</u>	<u>Dec</u>	<u>Jan</u>	<u>Feb</u>	<u>Mar</u>	<u>Apr</u>	<u>May</u>	<u>Jun</u>	<u>Jul</u>	<u>Aug</u>		
Curr. 12 mo.	115	118	96	104	83	94	118	90	98	93	96	104		101
Current Budget	99	99	99	99	99	99	99	99	99	99	89	89		
Prev. 12 mo.	94	93	79	67	80	91	95	100	102	105	107	95		92
MRIs														
	<u>Sep</u>	<u>Oct</u>	<u>Nov</u>	<u>Dec</u>	<u>Jan</u>	<u>Feb</u>	<u>Mar</u>	<u>Apr</u>	<u>May</u>	<u>Jun</u>	<u>Jul</u>	<u>Aug</u>		
Curr. 12 mo.	614	634	555	604	560	564	577	533	514	562	554	556		569
Current Budget	575	575	575	575	575	575	575	575	575	575	517	517		
Prev. 12 mo.	598	598	450	503	531	509	442	588	537	597	641	619		551
Total Other X-ray Exams														
	<u>Sep</u>	<u>Oct</u>	<u>Nov</u>	<u>Dec</u>	<u>Jan</u>	<u>Feb</u>	<u>Mar</u>	<u>Apr</u>	<u>May</u>	<u>Jun</u>	<u>Jul</u>	<u>Aug</u>		
Lab Procedures														
Curr. 12 mo.	33,895	34,186	29,028	28,811	29,995	29,694	32,443	29,662	29,729	30,331	28,170	42,038		31,499
Current Budget	32,981	32,981	32,981	32,981	32,981	32,981	32,981	32,981	32,981	32,981	29,682	29,682		
Prev. 12 mo.	34,548	33,336	26,829	29,939	29,174	30,794	29,041	29,470	24,854	34,102	33,960	32,375		30,702
														0
	<u>Sep</u>	<u>Oct</u>	<u>Nov</u>	<u>Dec</u>	<u>Jan</u>	<u>Feb</u>	<u>Mar</u>	<u>Apr</u>	<u>May</u>	<u>Jun</u>	<u>Jul</u>	<u>Aug</u>		
Curr. 12 mo.	559	511	496	466	459	429	465	442	464	404	409	430		461
Current Budget	569	569	569	569	569	569	569	569	569	569	512	512		
Prev. 12 mo.	661	503	546	525	440	490	561	491	479	553	579	580		534
Emergency Room Visits														
	<u>Sep</u>	<u>Oct</u>	<u>Nov</u>	<u>Dec</u>	<u>Jan</u>	<u>Feb</u>	<u>Mar</u>	<u>Apr</u>	<u>May</u>	<u>Jun</u>	<u>Jul</u>	<u>Aug</u>		
Curr. 12 mo.	7,669,999	7,612,860	7,350,420	8,296,381	6,844,648	6,797,382	7,516,421	6,704,846	6,691,145	7,016,548	6,976,161	8,002,069		7,289,907
Current Budget	6,417,517	6,413,975	6,417,513	6,413,977	6,417,515	6,417,515	6,413,977	6,417,514	6,413,974	6,417,517	6,866,726	6,202,186		
Prev. 12 mo.	6,582,246	6,384,088	6,214,322	6,623,555	5,752,805	5,798,463	5,148,635	6,010,185	5,869,108	6,599,027	6,725,357	6,882,579		6,215,864
Hospital Revenues														
	<u>Sep</u>	<u>Oct</u>	<u>Nov</u>	<u>Dec</u>	<u>Jan</u>	<u>Feb</u>	<u>Mar</u>	<u>Apr</u>	<u>May</u>	<u>Jun</u>	<u>Jul</u>	<u>Aug</u>		
Curr. 12 mo.	52.45	62.51	62.27	59.01	56.40	49.16	53.30	54.78	54.26	53.98	57.59	55.66		55.95
Current Budget	55.00	55.00	55.00	55.00	55.00	55.00	55.00	55.00	55.00	55.00	55.00	55.00		
Prev. 12 mo.	69.98	67.01	69.09	64.15	58.68	64.29	63.76	64.67	69.70	62.80	62.07	60.87		64.76
Net Days of Revenue in A/R														
	<u>Sep</u>	<u>Oct</u>	<u>Nov</u>	<u>Dec</u>	<u>Jan</u>	<u>Feb</u>	<u>Mar</u>	<u>Apr</u>	<u>May</u>	<u>Jun</u>	<u>Jul</u>	<u>Aug</u>		
Curr. 12 mo.	54	51	48	53	37	30	46	37	35	39	41	37		42
Current Budget	41	41	41	41	41	41	41	41	41	41	37	37		
Prev. 12 mo.	36	37	46	47	30	37	28	40	44	48	55	35		40
Orthopedic Surgeries														
	<u>Sep</u>	<u>Oct</u>	<u>Nov</u>	<u>Dec</u>	<u>Jan</u>	<u>Feb</u>	<u>Mar</u>	<u>Apr</u>	<u>May</u>	<u>Jun</u>	<u>Jul</u>	<u>Aug</u>		



Curr. 12 mo.	20	10	12	12	17	11	15	8	11	15	12	21	14
Current Budget	16	16	16	16	16	16	16	16	16	16	14	14	
Prev. 12 mo.	14	8	15	17	19	14	11	9	16	22	15	17	15

Newborns

	Sep	Oct	Nov	Dec	Jan	Feb	Mar	Apr	May	Jun	Jul	Aug	
Curr. 12 mo.	23	22	24	28	23	18	21	19	23	15	24	17	21
Current Budget	24	24	24	24	24	24	24	24	24	24	22	22	
Prev. 12 mo.	24	29	23	32	21	26	17	16	25	18	23	25	23

General Surgeries

	Sep	Oct	Nov	Dec	Jan	Feb	Mar	Apr	May	Jun	Jul	Aug	
Curr. 12 mo.	58	53	54	69	62	60	45	59	62	59	47	74	59
Current Budget	49	49	49	49	49	49	49	49	49	49	44	44	
Prev. 12 mo.	34	55	38	60	34	41	46	55	54	53	56	40	47

Procedure Core Visits

	Sep	Oct	Nov	Dec	Jan	Feb	Mar	Apr	May	Jun	Jul	Aug	
Curr. 12 mo.	108	126	120	111	75	86	117	102	95	90	79	96	100
Current Budget	93	93	93	93	93	93	93	93	93	93	84	84	
Prev. 12 mo.	92	112	81	92	70	95	85	81	72	97	103	122	92

Mammography

Year	Mammo Exams
Dec-04	977
Dec-05	1,037
Dec-06	1,051
Dec-07	1,101
Dec-08	1,154
Dec-09	1,231
Dec-10	1,208
Dec-11	979

	Sep	Oct	Nov	Dec	Jan	Feb	Mar	Apr	May	Jun	Jul	Aug	
Curr. 12 mo.	167	214	171	165	203	202	221	165	214	199	187	213	193
Current Budget	202	202	202	202	202	202	202	202	202	202	182	182	
Prev. 12 mo.	206	198	144	190	186	169	177	221	191	196	204	177	188

Ultrasound

	Sep	Oct	Nov	Dec	Jan	Feb	Mar	Apr	May	Jun	Jul	Aug	
Curr. 12 mo.	31	30	17	41	44	33	20	25	50	34	29	30	32
Current Budget	27	27	27	27	27	27	27	27	27	27	24	24	
Prev. 12 mo.	27	38	13	32	32	26	24	19	25	22	39	24	27

Nuclear Medicine

	Sep	Oct	Nov	Dec	Jan	Feb	Mar	Apr	May	Jun	Jul	Aug	
Curr. 12 mo.	12	14	14	14	3	10	15	14	6	10	9	7	11
Current Budget	12	12	12	12	12	12	12	12	12	12	11	11	
Prev. 12 mo.	11	12	8	14	10	9	12	13	11	10	10	13	11

OB/GYN Surgeries

	Sep	Oct	Nov	Dec	Jan	Feb	Mar	Apr	May	Jun	Jul	Aug	
Curr. 12 mo.	89	78	78	74	82	80	82	68	74	87	73	94	80
Current Budget	87	87	87	87	87	87	87	87	87	87	78	78	
Prev. 12 mo.	94	70	81	86	83	79	61	67	80	103	90	80	81

Admissions

	Insurance	Medicare	Medicaid	Self Pay	Workers Comp.	Other							
Fiscal Year 2016	46.32%	33.20%	9.33%	7.87%	3.10%	0.18%	100.00%						
Fiscal Year 2017	45.98%	33.41%	9.62%	8.39%	2.50%	0.10%	100.00%						

Payor Mix

	Avg.	Aug	Jul	Jun	May	Apr	Mar	Feb	Jan	Dec	Nov	Oct	Sep
--	------	-----	-----	-----	-----	-----	-----	-----	-----	-----	-----	-----	-----

Thalken	0.00	0	0	0	0	0	0	0	0	0	0	0	0
Yost	0.50	1	0	2	0	0	0	4	0	1	0	0	0
Murphy	0.50	0	1	0	0	1	0	0	0	0	1	0	0
Retherford	1.50	1	2	2	1	2	4	1	0	3	4	2	4
Campbell	5.50	8	3	4	3	4	1	1	3	3	1	2	9
Rupp	0.00	0	0	0	0	0	0	0	0	0	0	0	0
Robertson	3.00	1	5	2	1	0	4	2	1	3	3	4	5
Lansang	0.00	0	0	0	0	0	0	0	0	0	0	1	0
Grosdidier	1.50	1	2	3	1	0	3	2	3	7	3	2	2
White, W.	2.00	3	1	3	4	1	2	4	2	1	1	1	1
Starks	3.50	6	1	5	7	3	0	4	3	2	0	1	2
Engle	10.00	10	10	9	4	3	11	8	12	5	7	7	8
Hospitalist	34.00	35	33	36	36	42	36	38	34	33	39	44	28
Skuza	1.00	1	1	0	0	0	0	0	0	0	0	1	0
Croft	4.00	6	2	6	6	3	6	5	7	4	7	3	10
Newborns	16.50	21	12	15	11	8	15	11	17	12	12	10	20
Admissions	83.50	94	73	87	74	67	82	80	82	74	78	78	89
83.50													

Jan-00	Jan-00	Jan-00	Jan-00	Jan-00	Jan-00	Jan-00	Jan-00	Jan-00	Jan-00	Jan-00	Jan-00	Jan-00	Jan-00
0	0	0	0	0	0	0	0	0	0	0	0	0	0
0	0	0	0	0	0	0	0	0	0	0	0	0	0
0	0	0	0	0	0	0	0	0	0	0	0	0	0
0	0	0	0	0	0	0	0	0	0	0	0	0	0

	<u>Sep</u>	<u>Oct</u>	<u>Nov</u>	<u>Dec</u>	<u>Jan</u>	<u>Feb</u>	<u>Mar</u>	<u>Apr</u>	<u>May</u>	<u>Jun</u>	<u>Jul</u>	<u>Aug</u>	
Curr. 12 mo. Minor Procedures	21	24	18	20	17	18	14	21	15	17	21	27	
Curr. 12 mo. Scopes	37	29	36	49	45	42	31	38	47	42	26	47	
Procedure Core Visits													

	Current Month	YTD FY 2017 Avg. Length of Stay
	Avg. Length of Stay	Length of Stay
Retherford	1.50	2.33
Lansang	0.00	0.00
Starks	2.25	2.13
Hospitalist	3.34	3.24
Grosdidier	2.00	2.00
Murphy	0.00	3.00
White, W.	2.40	2.17
Croft	2.33	2.80
Skuza	2.00	2.40
Yost	1.33	1.50
Engle	1.88	1.77
Rupp	0.00	0.00
Campbell	2.43	2.44
Robertson	3.00	3.50

	<u>Sep</u>	<u>Oct</u>	<u>Nov</u>	<u>Dec</u>	<u>Jan</u>	<u>Feb</u>	<u>Mar</u>	<u>Apr</u>	<u>May</u>	<u>Jun</u>	<u>Jul</u>	<u>Aug</u>	
Curr. 12 mo.	3910	3841	2998	2720	3458	3212	4464	3769	3073	3612	2489	2344	3,324
Current Budget	3457	3457	3457	3457	3457	3457	3457	3457	3457	3457	3111	3111	
Prev. 12 mo.	3219	3654	3857	3124	3384	2976	3009	3666	3395	3181	3798	3253	3,376
RT Procedures													

	<u>Sep</u>	<u>Oct</u>	<u>Nov</u>	<u>Dec</u>	<u>Jan</u>	<u>Feb</u>	<u>Mar</u>	<u>Apr</u>	<u>May</u>	<u>Jun</u>	<u>Jul</u>	<u>Aug</u>	
Curr. 12 mo.	399	448	604	446	411	409	342	397	462	429	470	427	437
Current Budget	371	371	371	371	371	371	371	371	371	371	334	334	
Prev. 12 mo.	440	416	262	362	337	324	264	398	329	362	421	341	355



---