

# Emanate Health

## An Important NOTIFICATION

Event: Go Live Tips - Citrix

AUDIENCE: Providers


We are going back in using Citrix to access Meditech Expanse. VMware is going away. Using Citrix, this will help eliminate issue in viewing the PACs image remotely. Within the Citrix environment the following Apps will be available- Dragon, CPacs, PACs and Meditech Expanse. After logging into Citrix, DUO authentication screen will need to be completed.

If you are not actively using Meditech Expanse from your office and would like to be set up, please contact Service Desk 626 813-4989.

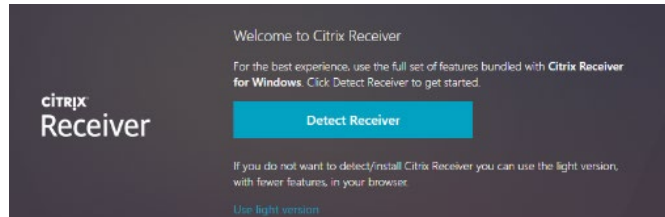
**This is for Desktop Users Only**

**1. Enter address citrix.cvhp.org and login**

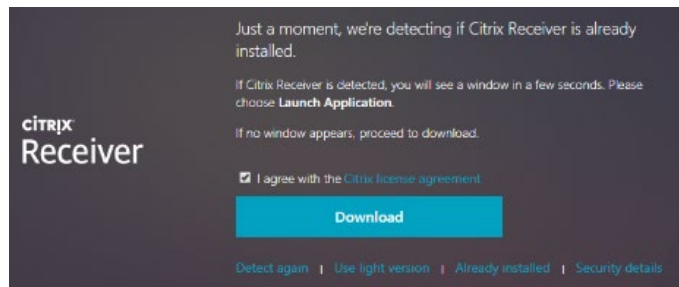
**\*Do not add @ CVHP at the end of your username\***



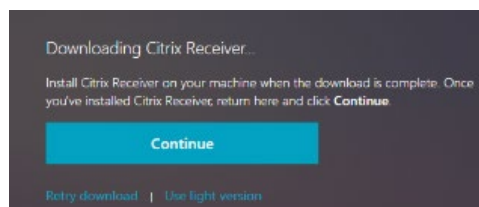
**2. Click Detect Receiver**



**3. Download Receiver**



**4. Click Continue.** The download will show at the bottom. Click to open.

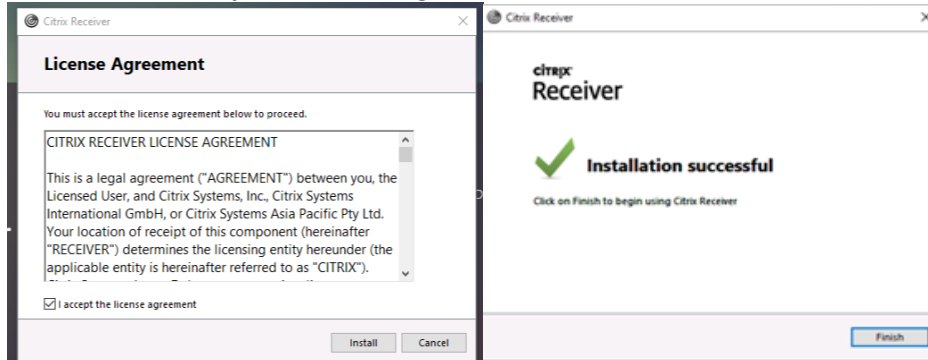


DETAILS:

## 5. Click on start

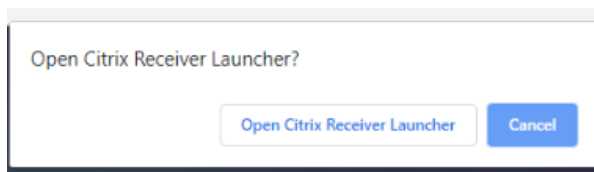


## 6. Check off "I accept the license agreement" and click install. Click Finish

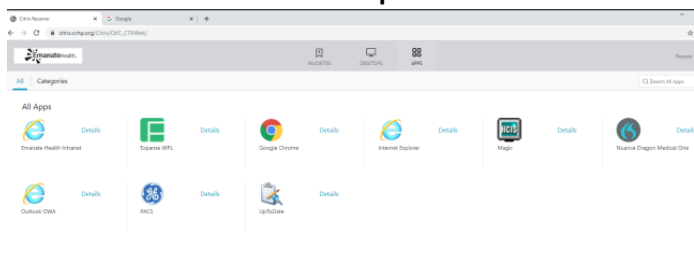


## 7. Click Open Citrix Receiver Launcher.

**\*If that does not open go back to STEP #3 click on Already Installed or Use Lite Version\***



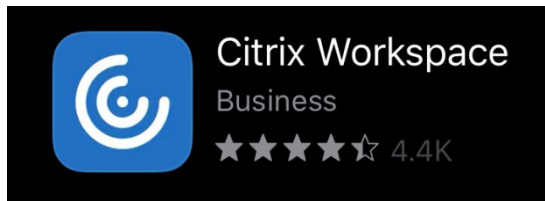
## 8. Click on APPS and click on Expanse WPL



## 9. Complete the DUO Authentication when you launch Expanse

### Instructions for MAC users only

#### 1. Download APP Workspace



or go to this link and click **Download Citrix Workspace app for MAC**

<https://www.citrix.com/downloads/workspace-app/mac/workspace-app-for-mac-latest.html>

**Download Citrix Workspace app for Mac**

(141.2 MB - .dmg)

## 2. Click Get Started

 Citrix Workspace



Securely access your favorite apps  
and services in one place and access  
them anytime on any device

[Get Started](#)

## 3. Enter address <https://citrix.cvhp.org>

To get started, enter your company  
email address or Store URL

 Email address or Store URL

Use smart card



[Continue](#)

#### 4. Enter your login and password

**\*Do not add @ CVHP at the end of your username\***

Enter your credentials

User name

Password

[Sign in](#)

#### 5. Check mark QVC\_CTX

You have access to multiple stores.  
Choose which one you'd like to connect.

QVC\_CTX



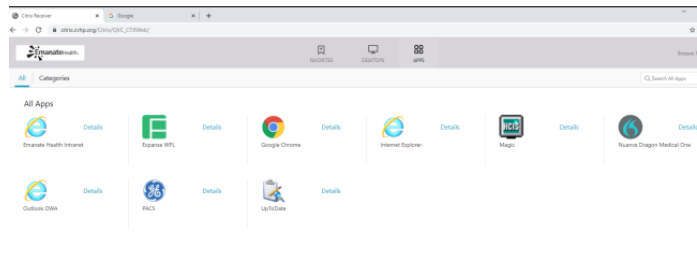
test

Apps

[Continue](#)

#### 6. Click on APPS and click on Expanse WPL

**\*\*\*Using the WPL APP eliminates installation of MESH to your device.**



#### 7. Enter your login and password

# QUV ADFS

Sign in with your organizational account

Sign in

**8. Complete the DUO Authentication when you launch Expanse**