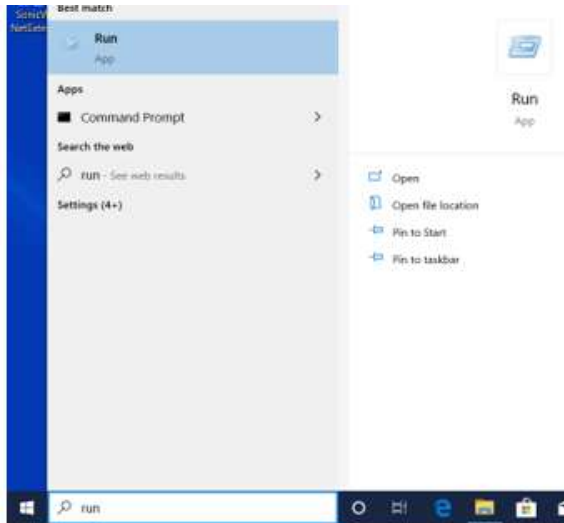


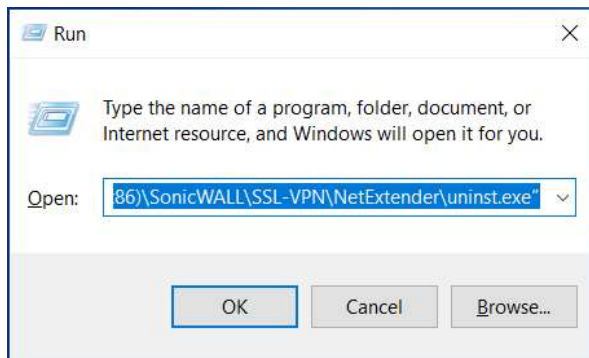
How to Update NetExtender

This is only for users who previously used Net Extender

1. In the Search bar search for “Run” and open the “Run” App

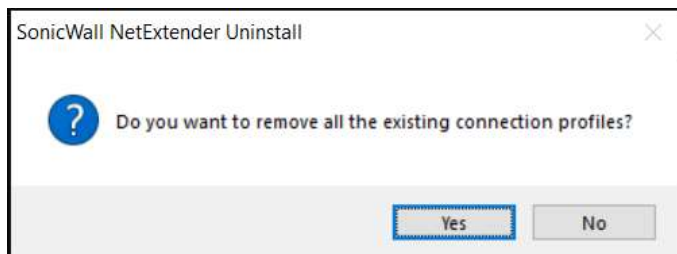


2. In the window that comes up copy in the following line of text
C:\Program Files (x86)\SonicWALL\SSL-VPN\NetExtender\uninst.exe



Then Select OK

3. A Dialog will pop up that asks “Do you want to remove all the existing connection profiles”
Select “Yes”



Then Wait for the uninstaller window to finish once done click "OK"

4. Open internet explorer and browse to sslvpn.lrhc.org
 - a. Sign in with LRHC credentials
5. Click on the "NetExtender" near the top / middle of the page

Welcome to the LRHC Virtual Office

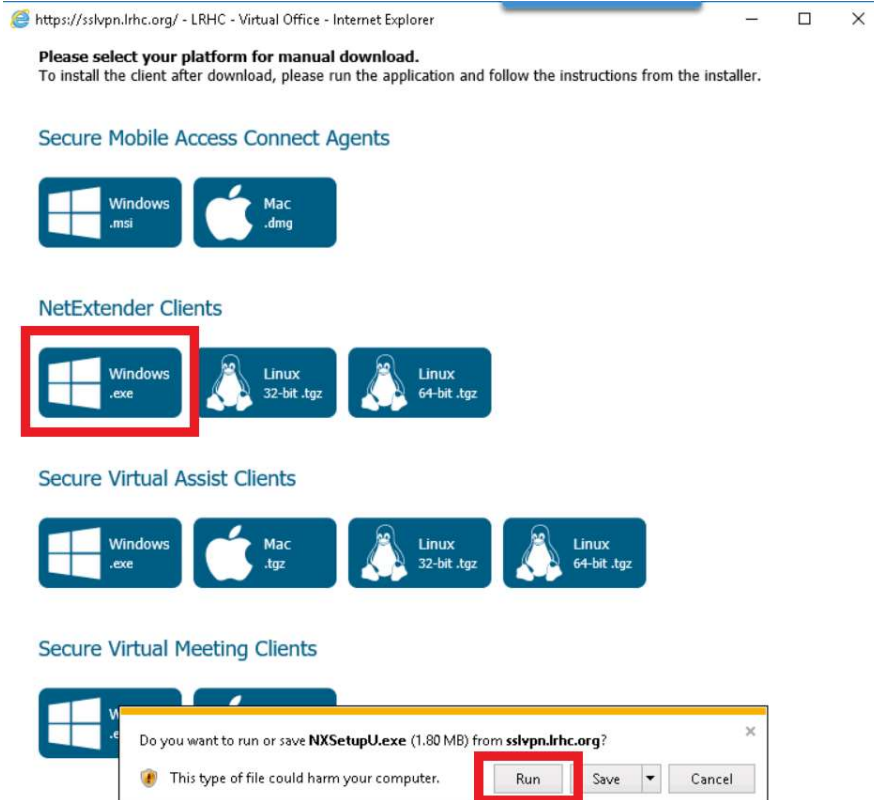
Virtual Office provides easy and secure remote access to the corporate network from anywhere on the Internet.

Click a pre-defined bookmark or create your own to securely access a corporate network resource.

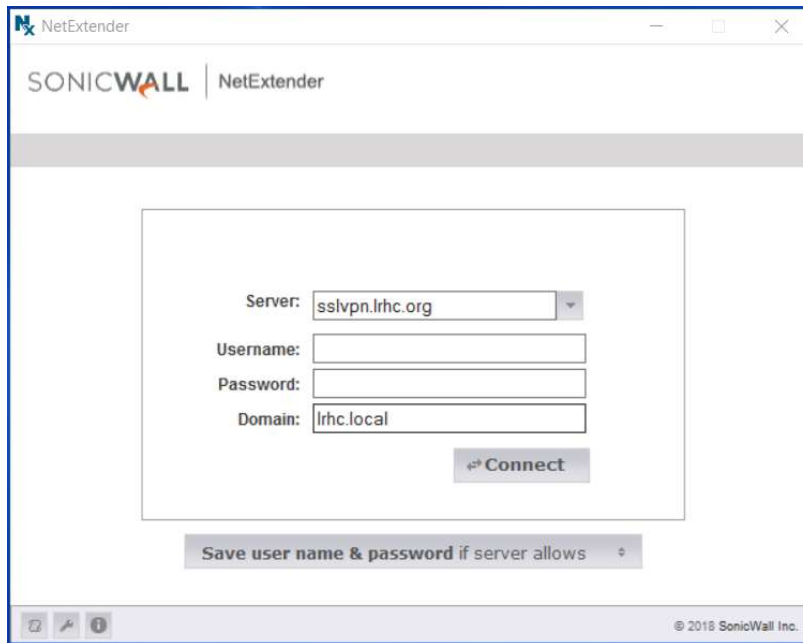
Launch NetExtender to create a secure network connection to the corporate network for full network access.



6. In the window that pops up select Download
7. In the next window select "Windows.exe" under "NetExtender Clients" then select run when it finishes downloading.



8. During install click next, then select "I accept the terms of the License Agreement" and select next, then select next and then select Install
 - a. Once its complete select Finish and then Restart your computer
9. Once your computer has turned back on, Open "NetExtender" and input the following information along with your credentials
Server name= sslvpn.lrhc.org
Domain name=lrhc.local



Click connect and it will try connect then may fail the first time fail with a Windows Remote Access Service Error.

Click close at the bottom and reboot your computer

After the computer reboots you will see an Nx icon on the desktop



Double click on this icon, enter your user name and password then choose connect

Once you are signed in you will be able to work as you normally would.