

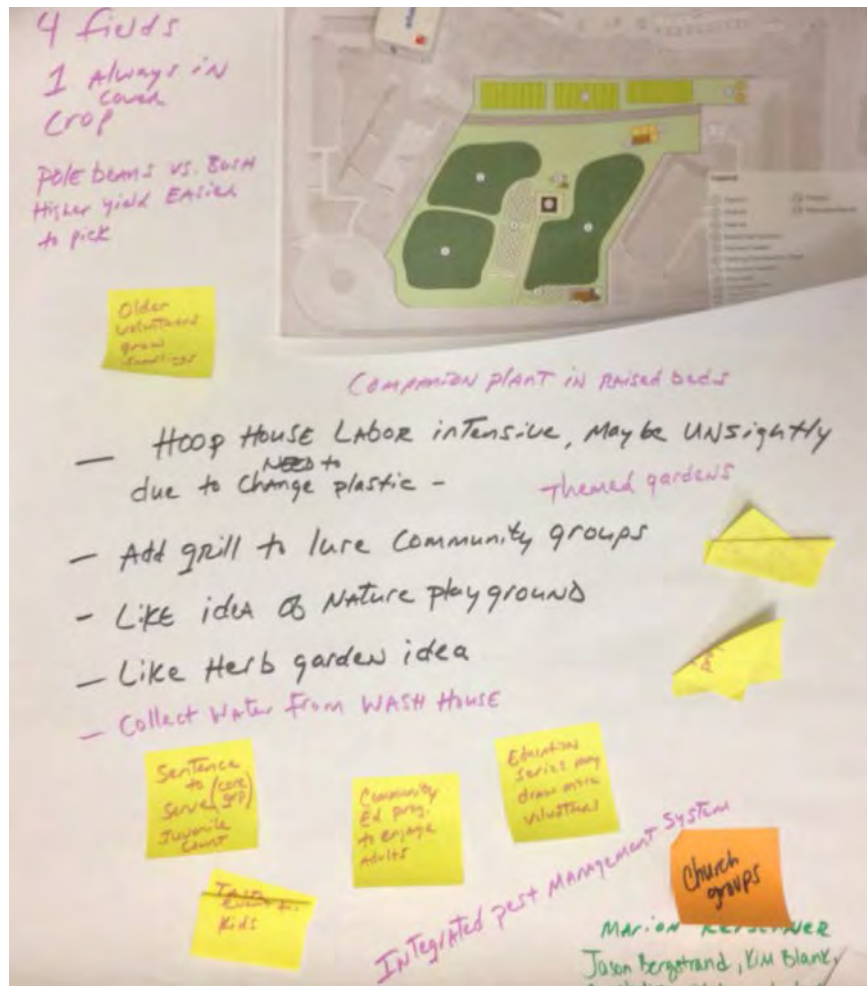
Section 2: Community Input

This section compiles information generated by the community in three volunteer panels.

Group 1: Volunteer Opportunities

Group Members

Marion Kerschner, Kim Blank
Jason Bergstrand, Abby Volden
Bev Norlin



Comments on Design

- Like the 4 separate fields
- Keep one of the 4 fields always in a cover crop
- Like the idea of pole beans compared to bush beans

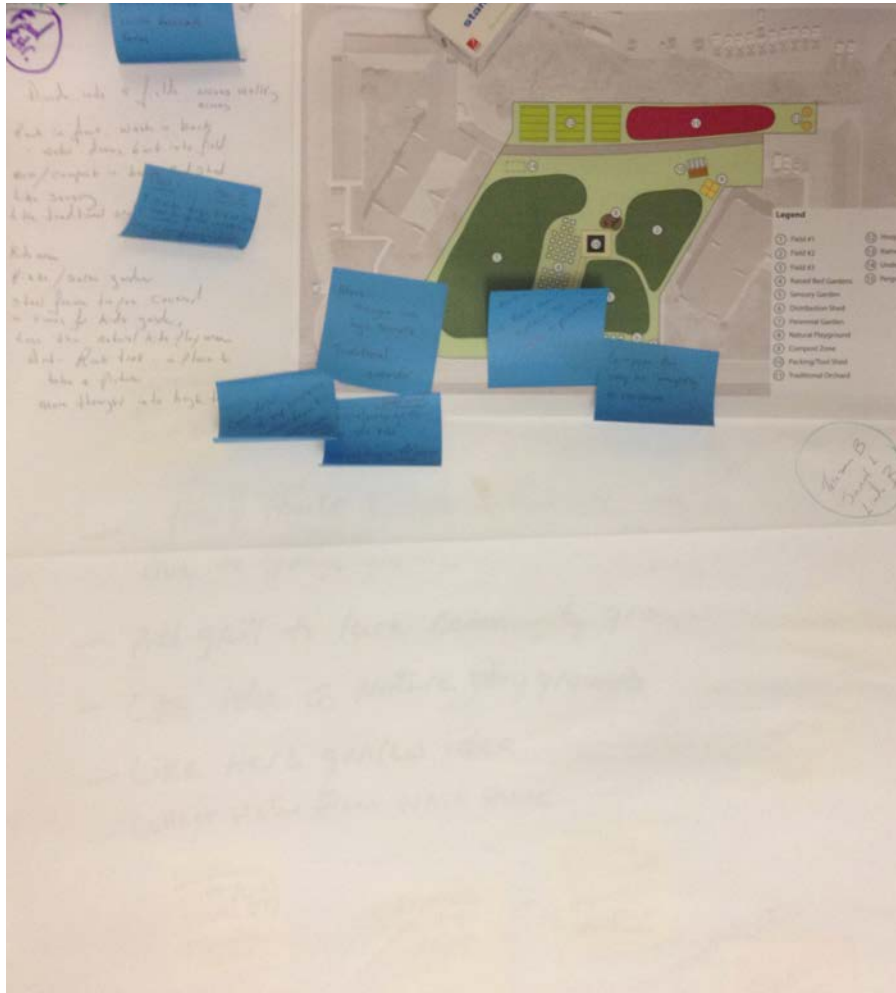
Volunteer Suggestions

- Companion plant in raised beds
- Add grill to lure community groups
- Generate themed gardens to draw interest
- Hoop houses might be too labor-intensive
- Contact church groups to recruit volunteers
- Education series might draw in helpers
- Juvenile court could use volunteer hours
- Community education program to engage adults
- Taste-testing for kids to learn about eating healthy
- Organize events around holidays such as Earth Day

Group 2: Food Distribution

Group Members

Teresa B., Linda B.,
Janet L.



November 6th Community Input

Comments on Design

- Like the 4 separate fields
- Likes the traditional orchard
- Likes the sensory garden
- Kids natural area is great idea
- Look at incorporating large art projects to get people to visit the garden
- Keep the compost behind shed out of sight

Food Distribution Suggestions

- Create events to get families involved
- Distribution bags to pick produce up in
- Cooler to extend shelf life
- Have food-shelf volunteers come pick up produce creating awareness of the garden

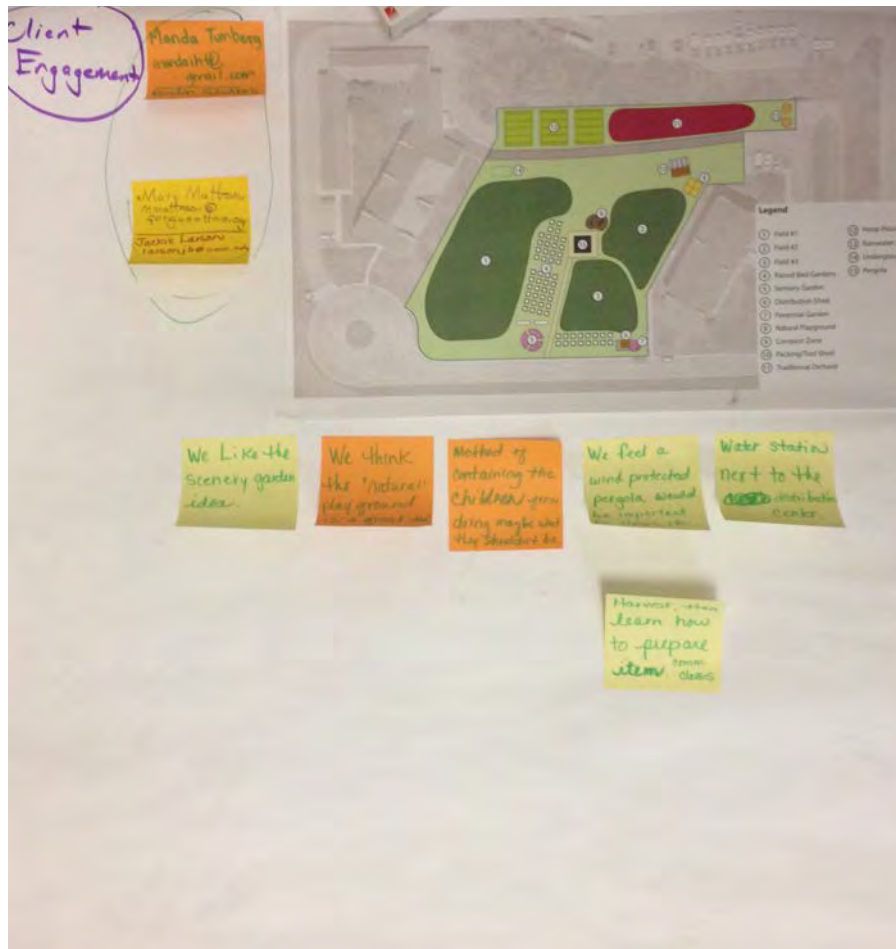
Group 3: Client Engagement

Group Members

Mary Matteson, Kristin Schultes
Jackie Larson, Manda Tumberg

Comments on Design

- Like the sensory garden
- Natural play area is a good idea to keep kids entertained



Client Engagement Suggestions

- Having a walled off pergola will help to create a space for community events
- Have a harvest event, where people can learn how to harvest, when to harvest and what to do with the harvest.
- Tying into the harvesting event, having some sort of cooking demonstration with fresh produce.

Group 4: Horticulture Issues

Group Members

Jenni Brause, Craig Winters,
Melissa O'Donnell



Comments on Design

- Keep compost away from Apartments
- No hoop houses
- 4 Fields make crop rotation easier
- Put sensory garden in this plan
- Natural playground is a good idea

Horticulture Suggestions

- More companion planting
- Limit amount of melons grown
- Use pole beans to increase yield
- Use row covers to prevent pests and weeds
- Limit heirloom tomatoes
- Use of cold-frames will extend growing season

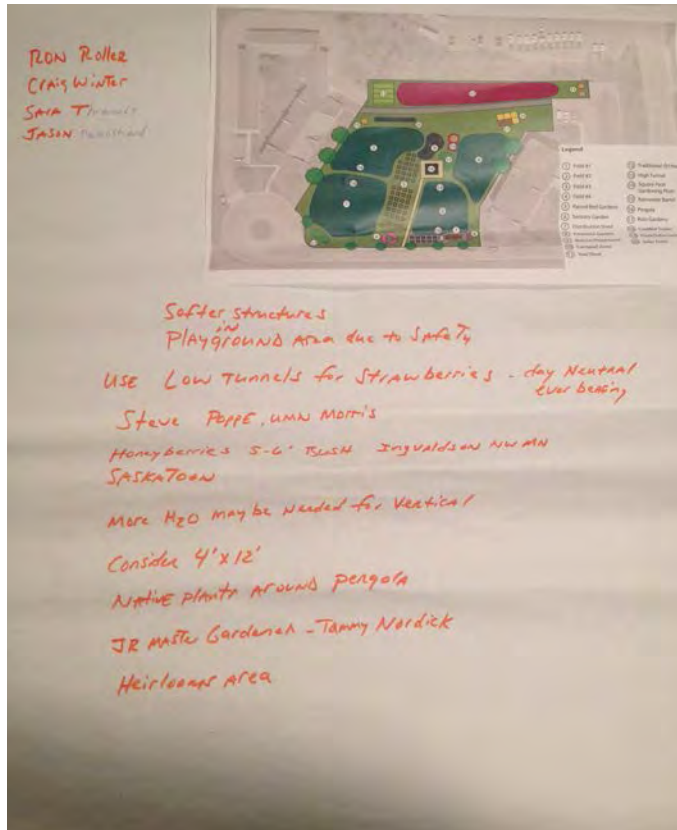
November 6th Community Input Pictures



Group 1 Members

Ron Rollar, Jason Bergstrand

Craig Winter, Sara Thronsdot

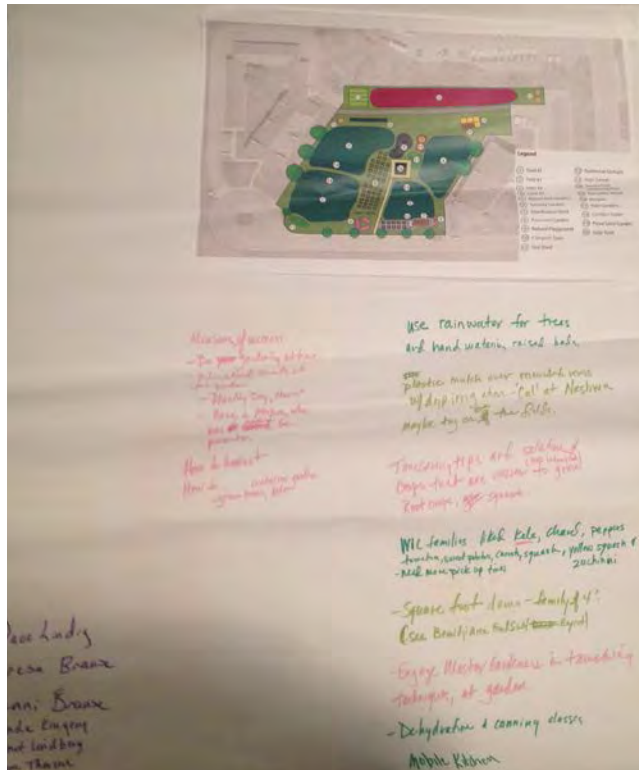


Comments on Design

- Softer structures in playground area to provide a safer play set for children
- Use low tunnels for strawberries
- More water may be needed for vertical gardening plant species
- Consider raised beds in a 4'x12' size. Allows for more space to grow particular plant species.
- Native plants could be used instead of rain gardens around the pergola
- Jr. Master Gardener program for getting children involved
- Create specific areas in the garden

Group 2 Members

Dave Lindig, Linda Kingery
 Teresa Brause, Janet Lindberg
 Jenni Brause, Diane Thorson



December 18th Community Input

Comments on Design

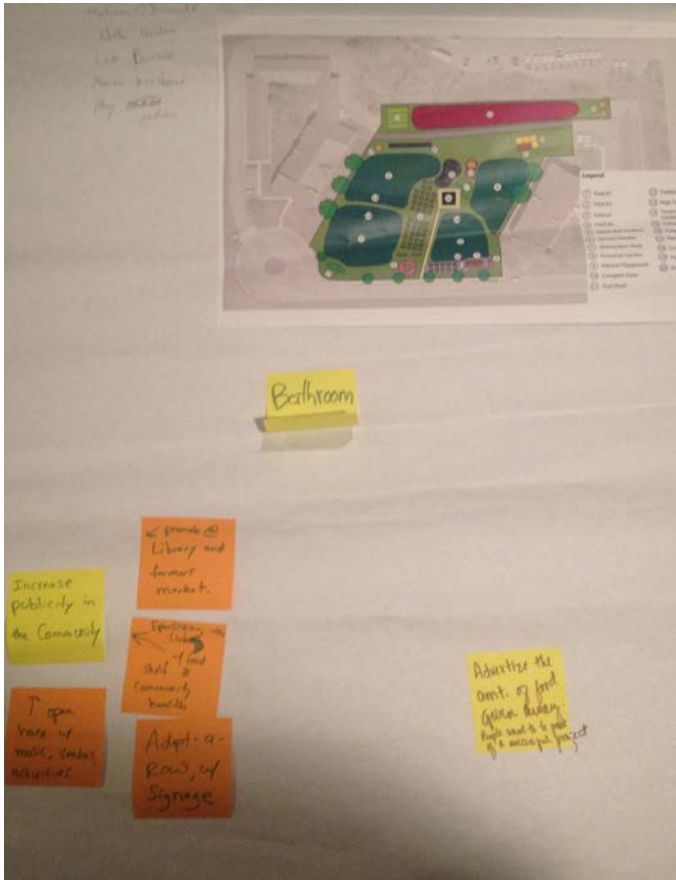
- Use rainwater for watering trees and raised bed gardens
- Plastic mulch over mounded rows with irrigation may be an option for the fields
- WIC families liked kale, peppers, tomatoes, sweet potatoes, carrots, squash, yellow squash and zucchini.
- Engage Master Gardeners in teaching techniques at the garden
- Dehydration and canning classes could be taught at the garden

Client Engagement Group Members

Melissa O'Donnell, Marion Kershner

Noelle Harden, Mary Matteson

Linda Bowhall



December 18th Community Input

Comments on Design

- Bathroom is needed
- Increase the publicity of the garden within the community
- Promote the LRTR garden at the library
- Conduct an open house with vendors to get people involved with the garden
- Adopt-a-row. Have companies and organizations adopt a row and have them manage that row from weeding to watering. Could make it a competition where they compete with other organizations to have the best row in the garden.
- Advertise the amount of food given away and produced, people want to be part of a successful project.

