

Celebrating Excellence Every Day

2011 Annual Report



A Letter From The President

At Mary Rutan Hospital, we have an unwavering commitment to provide the highest quality health care to the people we serve. To achieve this vision, we know we must move beyond what is expected of a community hospital, and that is why each and every day we strive to find new and better ways to meet the needs of our patients and our community.

In 2011, we identified and implemented cutting-edge technology to give our patients the earliest and most accurate diagnosis, as well as the most efficient and effective treatment. We forged new partnerships and affiliations that brought the highest level of care into our community setting. We pushed beyond programs found at most community hospitals to bring our patients the services they need to improve their health. We were also inspired to implement an entirely new service culture that is redefining the patient—and staff—experience at MRH.

Our efforts produced results as we achieved the highest level of overall patient satisfaction with a 97% approval rating. In addition, we earned re-accreditation by The Joint Commission. We continued to follow stringent standards set forth by the Society for Chest Pain Centers to remain an Accredited Chest Pain Center. We introduced digital mammography at the Ewing Crawfis Imaging Center and became one of the first seven organizations in Ohio to become a "Breast Imaging Center of Excellence." We invested \$1.5 million dollars to bring the latest and most sophisticated MRI unit to our community and were once again named to the Ohio Hospital Association's Best Practices List for our outstanding health care rankings on Quality Care Measures. We partnered with OSU Medical Center to offer our community advanced stroke care, through telemedicine, and utilized similar technology to partner with Children's Hospital to expand our in-house pediatric care.

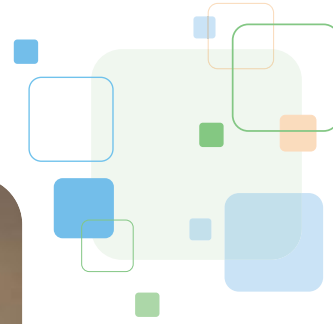
However, we are not resting on our success. In 2012 we will take our progress to a new level, as we implement a hospital-wide electronic medical record and clinical information system that will revolutionize how we deliver care to our patients. In addition, we will improve upon our organizational processes as we begin implementation of the ISO 9001 quality management system throughout our facilities.

Our commitment to innovation – to find new and better ways to serve you – propels us forward and will result in future achievements that will keep Mary Rutan Hospital on the forefront of the health care landscape.

As we reflect upon these accomplishments, we must acknowledge our staff, volunteers, board of directors, physicians and the community for their dedication and support as we enter our 93rd year of service to the community. It is because of them that we are able to continue to grow and achieve such a high level of success as a health care leader.

Amanda C. Goble

President & Chief Executive Officer



2011 BOARD OF DIRECTORS

Mary Rutan Hospital Board of Directors

Steve Austin
Dr. Tom Darrah
Chuck Earick
Jeff Garlock – *Vice Chair*
Rick Gildow
Art Harper
Nancy Knight
Don Leis
Tracy McPherson
Douglas Miller
Darin Olson – *Chair*
Mike Ritter
Jack Reser
Thomas Simon

Mary Rutan Health Association Board of Directors

Richard Abraham
Steve Austin
John Belser
Douglas Chamberlain
Dr. Tom Darrah
Chuck Earick
Rick Gildow
Dr. Harry Graber
Joan Haushalter
Nancy Knight – *Chair*
Don Leis
Tracy McPherson
Douglas Miller – *Vice Chair*
Darin Olson
Thomas Simon

Logan View Board

Richard Abraham
Vicki Elder
Linda Hilliker – *Chair*
Mark McIntyre
Mike Phillips
Jack Reser
Thomas Simon
Matthew Verbsky, DVM

Mary Rutan Foundation

Richard Abraham – *Chair*
Douglas Chamberlain
Chuck Earick
Deborah Ellis
Joan Haushalter
Nancy Knight
Michael Madden
Douglas Miller
Mary Montgomery
Patricia O'Connor
William Patterson
Sara Stahler

Administrative Leadership

Amanda C. Goble
President and CEO
Becky Nicholl
Vice President of Quality & Risk Management
Cheryl Brooks
Vice President of Compliance & Managed Care
Grant Varian, M.D.
Director of Medical Staff
Laura Miller
Vice President of Marketing & Communications
Marcia Davis
Vice President of Patient Services
Ronald Carmin
Vice President of Fiscal Affairs
Tammy Allison
Community Relations & COO of Mary Rutan Foundation
Tim Froebe
Vice President of Human Resources



2011 Financial Report

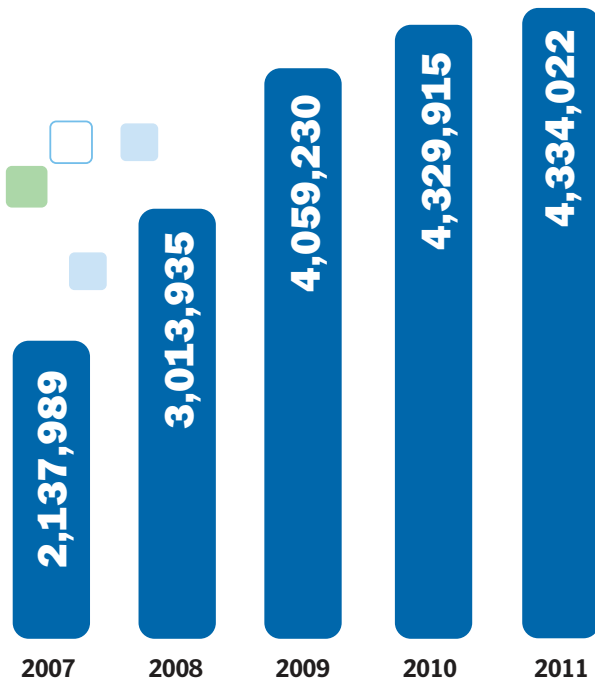
Fiscal Year Ending December 31, 2011

In 2011, Mary Rutan Hospital maintained a stable position, both financially and clinically, to meet community needs.

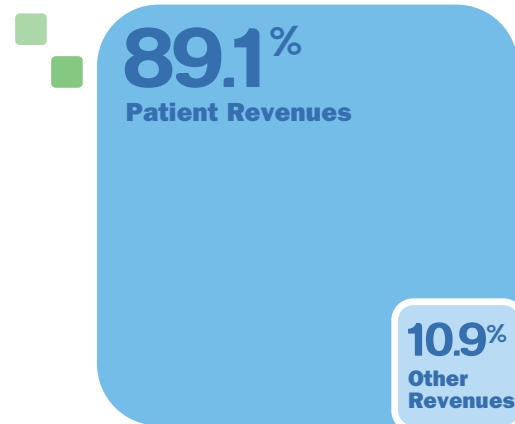
The hospital realized a positive financial performance, reporting a bottom line of \$2,294,421 for the fiscal year.

Mary Rutan Hospital was able to perform well financially, while continuing its policy of accepting all patients regardless of their ability to pay. The hospital provided a record \$4,334,022 in charity care during 2011.

CHARITY CARE CONTRIBUTIONS

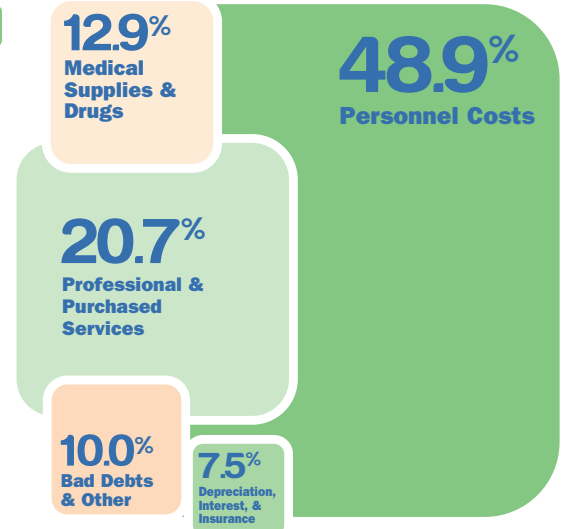


REVENUES AS A PERCENTAGE OF TOTAL PATIENT CARE AND OTHER REVENUES



TOTAL NET	
Patient Revenues.....	\$ 70,578,913
Other Revenues.....	\$ 8,673,792
Total Revenues.....	\$ 79,252,705

EXPENSES AS A PERCENTAGE OF TOTAL EXPENSES



Personnel Costs.....	\$ 37,645,924
Professional & Purchased Services.....	\$ 15,907,750
Medical Supplies & Drugs.....	\$ 9,925,034
Bad Debts & Other.....	\$ 7,665,064
Depreciation, Interest, Insurance.....	\$ 5,776,077
Total Expenses.....	\$ 76,919,849
Excess of Revenues Over Expenses.....	\$ 2,294,421

Superior Technology Upgrades Enhance Imaging Services

INDUSTRY'S MOST SOPHISTICATED MRI UNIT NOW AVAILABLE

The latest and most sophisticated fixed magnetic resonance imaging (MRI) unit is now available at MRH's Imaging Center. The new MRI, installed in late 2011, features the largest available clinical field-of-view, providing physicians exceptional images to read.

The unit, the largest open-bore MRI in the area, also provides patients greater comfort, particularly those who feel claustrophobic in smaller units. Deb Boyle, MRH's Director of Radiology, said, "With the addition of this new Toshiba MRI, Mary Rutan Hospital now has the largest opening, and highest quality, of any MRI unit in the area, fixed or mobile."

"The Vantage Titan system offers a significant increase in signal to noise ratio which results in better images," said Hassan Semaan, M.D., Mary Rutan Hospital's Neurological and Interventional Radiologist. "The large field of view is unique for this bore size and produces high-quality images without compromising overall image performance. In addition, the unit offers more room for patients and decreased noise, creating a better experience for the patient."

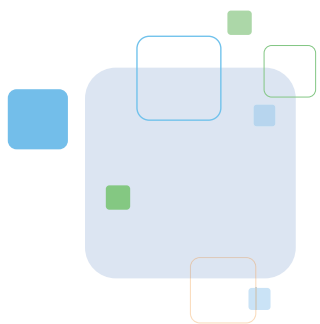
Because of the wide opening, this new Vantage Titan unit is perfect for claustrophobic patients, especially since many of all procedures can be performed feet first, meaning the patient's head can be kept outside the bore. The new unit will allow additional procedures to be conducted locally, so patients will no longer have to be referred outside of the community for

some of the more specialized studies. Now breast MRIs, expanded angiography, additional gallbladder and pancreatic studies, and enhanced orthopedic exams can all be expertly conducted with the new unit.

According to Deb Boyle, perhaps the most significant advancement with this MRI unit is Toshiba's Jet technology. "Using sophisticated state-of-the-art computer algorithms, Jet allows for improvement in image quality with motion compensation. Often, small movements by patients during an MRI test are unavoidable. With our previous unit, if there was significant patient motion, the image was often non-diagnostic (useless). Now, we can adjust not only for the unavoidable small movements, but often even for large movements. We worked hand-in-hand with Toshiba during installation and setup and the end result are images that are simply stunning."

The total cost for the new unit, installation and facility remodeling exceeds \$1.5 million, said Laura Miller, Vice President of Marketing for Mary Rutan Hospital. She added that the hospital will not increase exam charges for use of the new MRI machine, which replaces a unit that has served the community and MRH for 10 years. "We believe there will be a good return on this investment in better quality, enhanced studies, faster scans and the increased ability to serve more community members close to home."

The new unit also has Toshiba's patented Pianissimo technology, which dramatically reduces acoustic noise, the most significant cause of patient discomfort during an MRI exam, according to studies.



MRI
Toshiba
Vantage
Titan System



"With the addition of this new MRI... Mary Rutan Hospital now has the largest opening, and highest quality, of any MRI unit in the area, fixed or mobile."

Deb Boyle

Director of Radiology, Mary Rutan Hospital

Additional advantages to the new MRI unit:

Table flexibility: Serves patients with a table that lowers to less than 17 inches off the floor, offering greater access for pediatric and geriatric patients.

Arm rests: Conveniently located on both sides of the table, improving patient comfort.

Quicker processing: SPEEDER parallel processing supports faster scanning techniques with high-quality images.

Atlas Integrated Coil Technology: Integrated coils increase the speed of the imaging process during multiple exam requests.

Non-contrast MRA exams: Vantage Titan offers a safer alternative for performing rapid, high resolution MRAs (magnetic resonance angiograms) without using contrast agents. This helps to shorten exam time and increase patient comfort and safety. MRAs provide pictures of blood vessels inside the body.

Open view exams: The design of the machine allows patients' views to remain unobstructed during an exam, which significantly reduces the feeling of claustrophobia.

ADVANCED CT PROVIDES SUPERIOR PATIENT CARE WITH 50% LESS RADIATION

Installation has just been completed on the new Aquilion Premium 160-detector row scanner from Toshiba America Medical Systems, Inc. The advanced computed tomography (CT) system is used to evaluate and treat patients with improved clinical accuracy, while decreasing radiation exposure. The new system can scan any region of the body in just seconds, providing the essential information needed to evaluate patients and provide exceptional diagnostic accuracy in mere minutes.

In addition to faster CT scans, Mary Rutan Hospital expects to significantly increase its exam capacity. This means more patients

can be treated and referred for surgery or discharged from the hospital sooner. In an emergency room setting, when every second counts, the Aquilion160 scanner will allow physicians to quickly identify injuries to the internal organs and make a confident diagnosis.

"Logan County residents now have immediate access to the best CT technology available today," said Mandy Goble, President and CEO of Mary Rutan Hospital. "For trauma patients like auto accident victims, this may prove to be lifesaving technology due to the system's ability to deliver precise images of bones, organs and internal bleeding. For patients with blood clots, infections, and diseases like cancer, early diagnosis with the Aquilion Premium may result in a much earlier diagnosis and faster treatment," says Goble.

"The advantages of this scanner will be profound, in that it will be much faster and will result in 50% less radiation dose to the patient than our older system," said Director of Radiology Deb Boyle. "It will also enable us to offer CT brain perfusion studies, used to assess strokes, and to perform coronary CTA, used to assess blockages in the arteries to the heart, more quickly, with less discomfort for the patient." The new scanner will also cost less to operate and maintain than the current machine.

The Aquilion Premium is designed to offer physicians greater diagnostic capabilities by helping patients avoid more invasive medical procedures. The system delivers clinical images with multislice imaging technology that captures up to 160 anatomical "slices" in a single rotation. A computer constructs these "slices" into a 3-D image. In addition, the system's sensitivity and accuracy are enhanced with a process called isotropic scanning, which results in images that most accurately capture equal views and angles of internal structures. As a result, Toshiba's multislice technology captures precise images of the body's rapidly moving organs like the heart and lungs, which appear blurry when scanned by a traditional CT. Multislice imaging is also especially useful for examining patients who are unable to hold their breath, like trauma victims, acutely ill patients and young children.

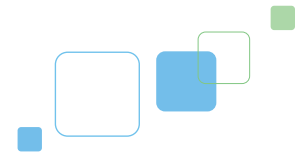


"Logan County residents now have immediate access to the best CT technology available today."

Mandy Goble

President & CEO, Mary Rutan Hospital

Mary Rutan Hospital Receives Recognition



QUALITY-BASED ACCREDITATION

Mary Rutan Hospital recently achieved national accreditation from DNV Healthcare, the newest and first Medicare-approved hospital accreditation program that integrates the ISO 9001 quality management system with the Medicare hospital standards. The DNV program requires the organization to evaluate the continuum of patient care throughout an entire health care system and take measured steps to improve when it is warranted.

"The DNV program is consistent with our long-term commitment to patient safety and overall quality," says Mandy Goble, President and CEO of Mary Rutan Hospital. "The ability to integrate the ISO 9001 quality management system with our clinical and financial processes is a major step forward."

DNV hospital accreditation addresses the demands of quality-driven hospitals that are dedicated to patient-centered care. As part of the accreditation process, DNV surveyors track the care of patients across various departments and facilities of Mary Rutan Hospital.

"The DNV program helps us identify opportunities and improve upon our organizational processes for continuous quality improvement. We look upon accreditation as a strategic business tool and as source of empowerment for our staff. The DNV program keeps us moving forward," says Goble.

Being accredited allows MRH to receive reimbursement for its patients covered by Medicare and Medicaid. The DNV accreditation program is authorized by the US Centers for Medicare and Medicaid Services and is the only program that integrates the ISO quality management system with Medicare's Conditions of Participation, the core requirements for hospitals set forth by the federal government.



CENTER OF EXCELLENCE

This past year, The Ewing H. Crawfis Imaging Center was named a "Breast Imaging Center of Excellence" by the American College of Radiology's Commission on Quality and Safety and the Commission on Breast Imaging, making it one of only seven such organizations in the Central Ohio area to receive this designation. After extensive review by the ACR, the center's consistent high quality performance for mammography, breast ultrasound and stereotactic breast biopsy officially earned the elite accreditation.



The accreditation represents the highest level of image quality and patient safety. It is awarded to a select few facilities meeting ACR Practice Guidelines and Technical Standards. Image quality, personnel qualifications, facility equipment, quality control procedures and quality assurance programs are assessed.

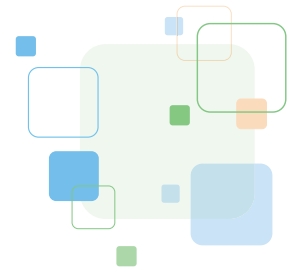
"Our commitment to breast health excellence is demonstrated by the recent accreditation of all of the related specialty areas by the American College of Radiology," explains Dr. Darlene Weyer, radiologist with Mary Rutan Hospital. "Proper diagnosis and effective treatment of a breast abnormality begins with accurate imaging. Ensuring that each mode of detection – mammography, ultrasound and biopsy – meets the standards of excellence set forth nationwide, this accreditation assures our patients and physicians of the accuracy, effectiveness and safety of the care we provide," said Dr. Weyer.

A Center of Excellence designation by the ACR signifies that the breast imaging program at the Ewing H. Crawfis Imaging Center has not only met mandatory accreditation requirements but has also voluntarily participated in a rigorous review process to ensure it has exceeded nationally set patient-care standards.

"For patients, the designation provides a quick way to identify the best mammography and breast imaging centers available," said Dr. Weyer. "It means patients in Logan County and the surrounding areas have access to the highest quality of diagnostic care. It means they can rely on us to utilize state-of-the-art equipment and the best people to help them through the process of getting the most accurate results possible."



Mary Rutan Hospital Celebrates Perfection



Administrators, directors and staff at Mary Rutan Hospital recently celebrated a milestone in their quest to be the best. The hospital was recently notified that it achieved 100% on all clinical care measures, which are considered to be indicators of quality care as set by the Centers for Medicare and Medicaid Services (CMS), which is part of the U.S. Department of Health & Human Services.

The measures, reported quarterly by each hospital, include national quality standards considered to be the best practices to improve patient outcomes. During the fourth quarter of 2011, the most current data available, Mary Rutan Hospital attained perfection in these important measures of quality care.

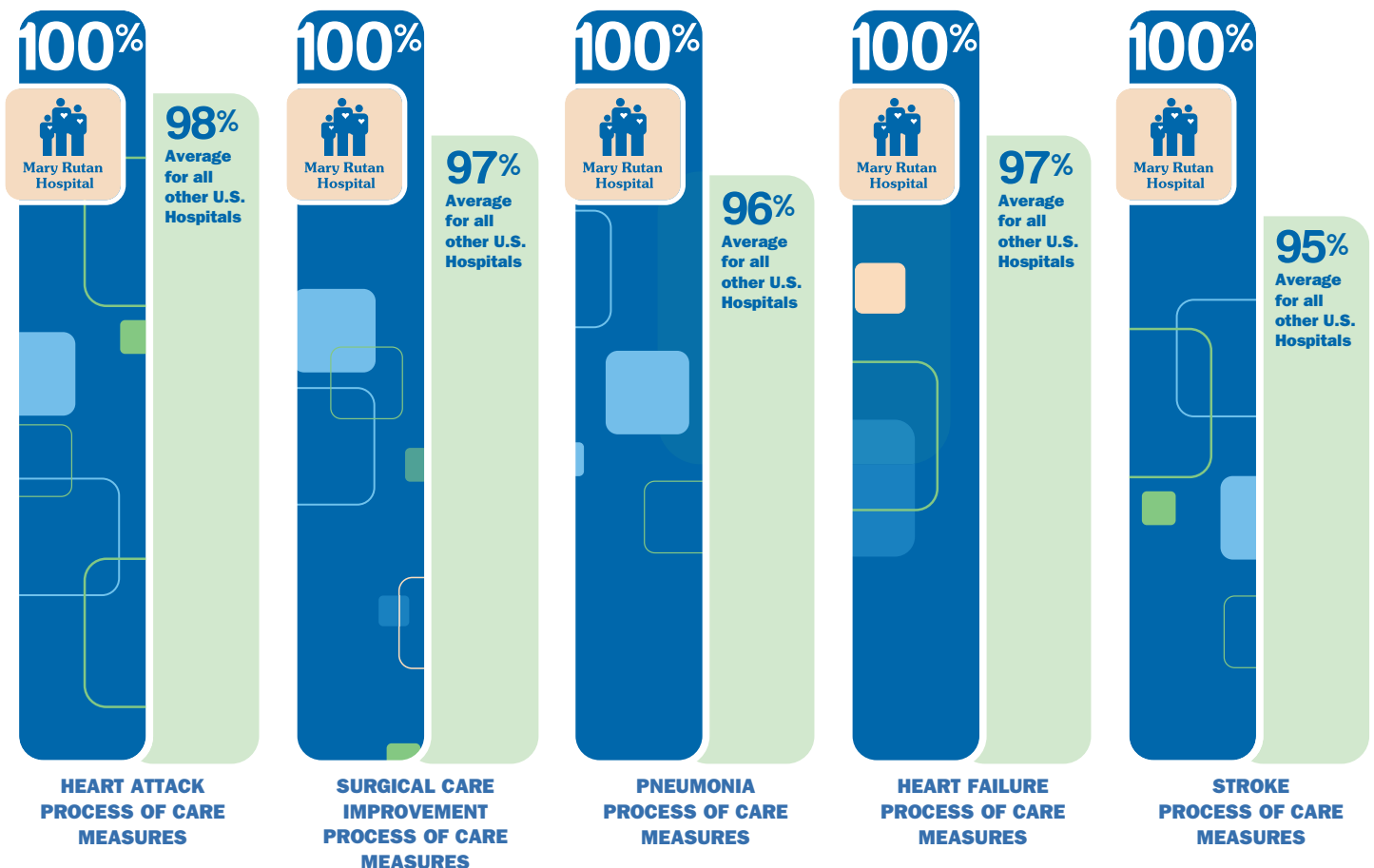
"The milestone is evidence of our staff and medical staff's ongoing commitment to assure safe and quality patient care, said Mandy Goble, CEO, Mary Rutan Hospital. "We are extremely

proud of our performance on these publicly-reportable quality metrics and believe that our community can place great confidence in our ability to provide high-quality care."

Becky Nicholl, Vice President of Quality at Mary Rutan Hospital, added, "It takes an extraordinary team effort each and every day to reach 100% on all quality measures across the board. Our doctors, nurses and staff have worked very hard to ensure that delivering the highest quality patient care possible is a top priority."

Mary Rutan Hospital has consistently performed far above the national and state averages since these quality measures began being reported publicly in 2005. This most recent accomplishment of 100% perfection across the board will again place MRH on the Ohio Hospital Association's Best Practices List.

Mary Rutan Hospital is pleased to share our most recently reported quality measures with our community. We hope you will share in the pride we feel and appreciate the progressive quality health care that Mary Rutan Hospital continues to provide as validated by the outstanding results seen below.



*As reported by Hospital Compare, a quality reporting agency for Medicare and Medicaid Services, 12/31/11.

New Partnership to Offer Advanced Stroke Care



Logan County area residents facing a potential or actual acute stroke will now benefit from a recently formed partnership between The Ohio State University Medical Center (OSUMC) and Mary Rutan Hospital (MRH). This alliance bolsters MRH's stroke services through around-the-clock access to The Ohio State University Medical Center's nationally ranked stroke experts via real-time, telemedicine-based technology.



"By collaborating with Mary Rutan Hospital, we come together to offer the best system of care to a stroke patient," says Dr. Eric Sauvangeau, Surgical Director of OSU Medical Center's Neurovascular Stroke Center. "Cooperation among the hospitals allows stroke patients to be treated beyond the regular timeframe, using advanced tools to dissolve or remove clots that cause stroke, and reverse the symptoms."

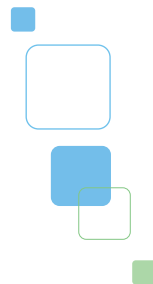
This Telectroke partnership provides a link between the emergency department team at MRH and the comprehensive team of stroke specialists at OSUMC. With the help of a secure, video-conferencing network, members of OSUMC Neurovascular Stroke Center are able to quickly perform virtual bedside neurological evaluations that allow them to examine patients, review brain images, and quickly select the best acute stroke treatments in collaboration with the MRH emergency department physicians.

"Time is critical in an acute stroke situation and having real-time 24/7 access to the OSUMC neurological team ensures that we are able to provide advanced stroke care to the residents of Logan County. This is a very exciting project that has the potential for a very positive impact on the outcome of stroke patients in our area," said Dr. Grant Varian, Medical Director at Mary Rutan Hospital.

Stroke is the third largest cause of death and a leading cause of serious, long-term disability in the United States. According to the American Stroke Association, about 700,000 Americans suffer a new or recurrent stroke each year. That means, on average, a stroke occurs every 45 seconds and about every three minutes someone dies of stroke.

"One of the things we can't treat is denial. If people sit at home and stoically wait out a stroke, that doesn't work. Calling 911 is so very important because we can have all the technology in the world, but if people are sitting in their homes and not getting to the hospital, it doesn't help them," said Dr. Varian.

When a suspected stroke patient arrives at Mary Rutan Hospital's Emergency Department, a "stroke alert" is activated at both Ohio State and Mary Rutan Hospital. This mobilizes a team of stroke experts who, through the use of telemetry and real-time testing and patient interview, can help the care team at Mary Rutan Hospital determine the best treatment option for the patient.



MINUTES MATTER...



STROKE WARNING SIGNS INCLUDE:

- Sudden numbness or weakness of the face, arm or leg, especially on one side of the body.
- Sudden confusion, trouble speaking or understanding.
- Sudden trouble seeing in one or both eyes.
- Sudden trouble walking, dizziness, loss of balance or coordination.
- Sudden severe headache with no known cause.

Exceeding Patient Expectations

Each year, more than 1,500 confidential mailed surveys are completed and returned to Press Ganey, a nationally recognized research group. The findings are then presented to our hospital and used to continuously improve the patient experience. You can see from our most recent score of 97%, we've been working very hard to offer our patients the best possible experience. We are very proud of the improvements that we've made over the past year and want to share this impressive result with our community.

"It is exciting to see our satisfaction scores rise over the past year. It means that our patients recognize our efforts to provide top-notch health care. With the help of Press Ganey, our efforts to provide exceptional care can be validated," says Mandy Goble, President and CEO of Mary Rutan Hospital.



*Percentage is based on responses of "good" and "very good," when asked about overall experience for combined inpatient and outpatient care. Calculated percentage reflects Press Ganey reported results for the 4th quarter 2011.

Outpatient

"The doctor and staff were wonderful. They were very efficient and careful with my care. We are blessed to have a hospital and staff such as MRH."



Inpatient Care

"I received wonderful attention and care. EVERYONE was interested in making my stay comfortable. I can't say enough about my great stay."



Surgical Department

"We experienced wonderful care given to our loved one. Mary Rutan is a gift for our community."

Emergency Department

"Exceptionally good experience. I was treated with care and compassion and was immediately taken into a comfortable room."



Family Birth Center

"We were amazed by the nurses in the FBC. They went above and beyond - so happy with our experience."

Environmental Services

"The room was spotless, pleasant and the cleaning staff were amazingly friendly. I love the newly remodeled rooms!"

Oncology Clinic

"We appreciate everything you do for everyone. You are exceptional people with caring hearts, we want to say thank you to all."

Over \$13.1 Million Committed to the Health and Wellness of the Communities We Serve

2011 COMMUNITY BENEFIT REPORT

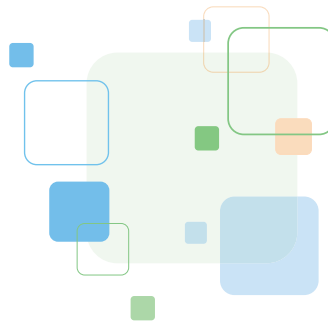
Each year, thousands of people seek medical treatment at Mary Rutan Hospital. Our staff is committed to improving the health and well-being of all those in Logan and surrounding counties. The programs and services we provide go beyond statistics and numbers, as we often serve those who do not have the means to pay for needed health care services.

As part of our mission, Mary Rutan Hospital provides a safety net for vulnerable populations who have no health insurance. In addition, we provide individuals with Medicare or Medicaid expert medical care and access to the latest medical technologies – despite the fact that these government programs offer fixed reimbursements that often do not fully cover the costs of care and treatment needed.

Mary Rutan Hospital offers a variety of free or low cost educational programs, support groups and health screenings each year. We provide a variety of direct health care services that are not profitable, but fulfill a great need in the community. In addition, we offer educational opportunities to physicians and health care professionals throughout the area. We remain active in community organizations and endeavors that benefit the community as a whole.

Many of these community benefits either would not or could not exist without the support and commitment of Mary Rutan Hospital. In 2011, these community benefits totaled \$13,147,455 and impacted the lives of many people throughout our community.

While we have enjoyed a long-standing tradition of providing these and other services to benefit our community, our role as an organization that provides these significant community benefits is not well understood. Increasingly, we are being asked to demonstrate our value and benefit to the community we serve. In response, Mary Rutan Hospital is taking a more planned, managed and organized approach to documenting the benefits we provide to our community. During the last year, we partnered with 22 community agencies and organizations to facilitate a formal community needs assessment. Once the data is compiled, we will work alongside these organizations to address identified areas of need and integrate community benefits into ongoing processes of planning, budgeting, implementation and reporting.



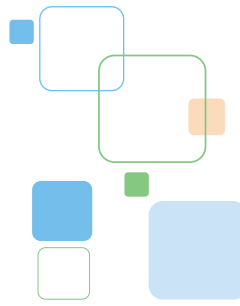
The following information provides a reflection of our commitment to Logan County and the individuals we serve, as it is embodied in our mission to provide progressive quality health care with a personal touch.

Charity Care & Financial Assistance

Mary Rutan Hospital provides comprehensive health care to all people, including those in financial need. In 2011, Mary Rutan Hospital provided \$6,056,600 in services to individuals in need through charity care and financial assistance programs.

Medicare and Medicaid Shortfalls

Government programs such as Medicare and Medicaid offer fixed reimbursements based on a patient's diagnosis. This most often does not account for the cost of the latest technology and treatment options that are available to give patients the best chances for recovery from an illness. Mary Rutan Hospital offers patients the best interventions available – no matter what reimbursement for the service might be. In 2011, 53% of our patient services were provided to beneficiaries of Medicare or Medicaid. This equated to 39,095 patient visits and resulted in reimbursement that was approximately \$6 million less than the cost of providing those services.



Health Professions Education

Mary Rutan Hospital is a major supporter of medical profession education. Student internships, clinical rotation, job shadowing opportunities and medical scholarships and loans help inspire future generations to consider and obtain careers in health care. In 2011, more than \$803,000 was invested in these endeavors.

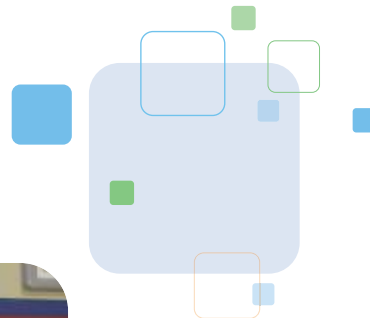
Cash and In-Kind Contributions

Each year Mary Rutan Hospital gives a portion of its operating margin to Mary Rutan Foundation. Together, the Foundation and Hospital offer grant dollars to a wide range of initiatives that impact community health and provide numerous health and wellness screenings and programs. Other donations are made to community organizations that improve the health and safety of the citizens of Logan County. In 2011, donations reached \$51,379.

Community Health Education and Outreach

In 2011, more than 25,700 people benefited from Mary Rutan Hospital health education programs, support groups

and community-based health screenings, totaling \$127,625. Education and outreach services are offered to the community at little or no cost so that cost does not discourage participation in programs and services that assist individuals in adopting a healthier lifestyle.



For further information about community health and wellness services or Community Benefits provided by Mary Rutan Hospital and Mary Rutan Foundation, please call (937) 599-7003.

With Sincere Appreciation and Gratitude to Our Many Contributors...

The Board of Directors of Mary Rutan Foundation would like to thank our generous benefactors, friends and volunteers for their support. We are truly grateful for gifts that enable the Foundation to support the critical programs and services of Mary Rutan Hospital. It is through these partnerships that we can make a lasting impact on the health care of people in our community.

The funds raised support initiatives that touch every area of the hospital from state-of-the-art equipment, medical scholarships and loans to health and wellness screenings and education. Each gift, small or large, makes a difference to the patients, families, physicians, staff and community of Mary Rutan Hospital. For this we extend our sincere appreciation and gratitude.

COMMUNITY HEALTH FUND

Tom & Tammy Allison
Andy & Laura Burton
Ronald Carmin
Marcia Davis
Vicki Fay
Amanda Goble
Gloria Hooper
Tom & Laura Miller

In Honor of Tammy Allison

Christie Barns
Vicki Fay
Nancy Harmon
Pam McBrien

CELEBRATE WOMEN

Medtronic
The Ohio State University
Medical Center

EMPLOYEE ASSISTANCE FUND

Sharon Bayliss
Chad & Olga Boberg
Shirley Borden
William & Cheryl Brooks
Leslie Buck
Ronald Carmin
Vicki Fay
Amanda Goble
Nancy Groves
Mary Jane Hensel
Gloria Hooper
Lisa Lay
Tom & Laura Miller

Barbara Moore
Lynn Myers
Becky Nicholl
Judy Ostermyer
Cynthia Pulfer
John & Lynn Reynolds
Bryan Ridings
Carissa Rose
Debra Schaffner
Winfred Stoltzfus, MD
Pamela Taylor
Dorothy Turner
Theresa VanderRoest

EQUIPMENT

Mary Rutan Hospital Guild

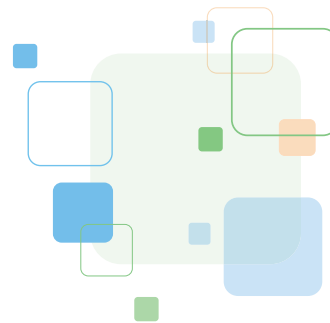
EWING H. CRAWFIS MEMORIAL EMPLOYEE SCHOLARSHIP FUND

Tom & Tammy Allison
William & Cheryl Brooks
Vicki Fay
Robert & Amanda Goble
Nancy Groves
Gloria Hooper
Tom & Laura Miller
Becky Nicholl
James Schwind
Linda Schwind
Winfred Stoltzfus, MD

FAMILY MEDICINE ACADEMIC FUND

Benjamin Logan Athletic Boosters

In Honor of Dr. Randall Longenecker
Oralea Pittman



GENERAL SCHOLARSHIP FUND

Jewell Berry
Ronald Carmin
Kathleen Fullenkamp
Amanda Goble
David & Tammy Gump
Gloria Hooper
Mike Kreglow
Tom & Laura Miller
Rosilynn Miller
Rotary-Kiwanis Golf Outing
Ellen Stevenson
Winfred Stoltzfus, MD

In Memory of Freda Gillespie Taylor

Tim & Susan Froebe
Lutheran Community Service, Inc.

In Memory of Patricia Fay Hurst

Barbara & Michael Trowbridge

In Memory of Roger Pratt

Tammy Allison
Cheryl Brooks
Ronald Carmin
Marcia Davis
Tim Froebe
Amanda Goble
Tammy Gump
Laura Miller
Becky Nicholl
Dr. Grant Varian

In Memory of Richard Cayot

Mary Rutan Hospital Care Coordination Staff

MEDICATION ASSISTANCE FUND

Tom & Tammy Allison
Robert & Christina Anderson
Anonymous
Sharon Bayliss
Jewell Berry
Leslie Buck
Andy & Laura Burton
Vicki Fay
Kathleen Fullenkamp
Amanda Goble
Robin Goff
Nancy Groves
Gloria Hooper
Tom & Laura Miller
Barbara Moore
Becky Nicholl
Peggy Patrick
Ellen Stevenson
Winfred Stoltzfus, MD
Pamela Taylor
Dorothy Turner
United Way of Logan County
Theresa VanderRoest
Theresa Vermillion
Pam Wagner
Kelli Zimmerly

In Honor of Mary Rutan Hospital Medical Staff

Mary Rutan Hospital

In Honor of Mary Rutan Hospital Board of Directors

Mary Rutan Hospital

In Honor of Mary Rutan Foundation Board of Directors

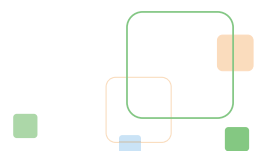
Mary Rutan Hospital

In Honor of Mary Rutan Health Association Board of Directors

Mary Rutan Hospital

In Honor of Logan View, Inc. Board of Directors

Mary Rutan Hospital



***In Memory of
Margaret "Pat" Coate***

Joe & Susan Ebbeler
Tom & Noma Fidago
Patricia Kauffman
Scott & Carmen LeVan
Mary Rutan Hospital
Laboratory Staff
John & Jane Miller
Janel M. Pequignot
Charlot Wade

***In Memory of
Anna Lee Godwin***

William & Cheryl Brooks
Butch & Peggy Brown
Ron & Candy Carmin
Richard & Kimberly Collum
Jerry & Lois Coons
Sue Crawfis
Marcia Davis
Tim & Susan Froebe
Philip Godwin Family
Rob & Mandy Goble
David & Tammy Gump
Nancy & Dick Harmon
Todd & Dana Heydinger
Jon & Cathie Hubbard
Thomas & Donna Insley
Wayne & Ann Jerviss
Lutheran Community
Service, Inc.

Mary Rutan Hospital
Maintenance Staff
Robert & Diana MacDonald
Scott & Nancy Moore &
Family

Carrie & Robert Reynolds
James & Theresa Vermillion
Kim & Tara Wagner

***In Memory of
B. Joan Simon***

Sue Crawfis

**LOGAN COUNTY
CANCER FUND**

Tom & Tammy Allison
Calvary Christian School
Ronald Carmin
Cindy Claypool
Estate of Rowena

M. Reames
Brandy Freyhof
Amanda Goble
Laura Miller
Lynn Myers
Springhills Presbyterian
Women
Bernice Stuck
The Richwood Banking
Company
United Way of Logan County
A.L. & Ann Verbsky
Joyce Zilles

***In Honor of
Mary Rutan Hospital
Medical Staff***

Mary Rutan Hospital

***In Honor of
Mary Rutan Hospital
Board of Directors***

Mary Rutan Hospital

***In Honor of
Mary Rutan Foundation
Board of Directors***

Mary Rutan Hospital

***In Honor of
Mary Rutan Health
Association Board of
Directors***

Mary Rutan Hospital

***In Honor of
Logan View, Inc. Board of
Directors***

Mary Rutan Hospital

***In Memory of
Brenda Blair***

Alana Robinaugh

***In Memory of
Michael Crouse***

Norma Metz Family

***In Memory of
Helen Drake***

Jean Ann Bushong

***In Memory of
Jimmy Dysert***

Todd & Joyce Gordon
Judith Grubbs
Heartland Automotive
Ed & Loris Henry
Brian & Lisa Lapp
Ohio Hi-Point Career Center
Wanda Salyer & Family

***In Memory of
Ronald Dean Farley***

Tony & Kim Broshes
Jack & Carol Ferryman
Tom & Nancy Smith
Sue & Dave Roland
Phyllis Young

***In Memory of
Herbert Fuson***

Jeanne Gamble
Elaine Hawkins Family
G. Russell & Lea Del Hurley
Patricia MacDonald
The Citizens Bank of
DeGraff

***In Memory of
Jeremiah Hoskins***

J. Keith Knoff

***In Memory of
Lisa Hirschfeld-Rubin***

Dick & Kay Abraham
Anthony & Laraine Centineo
Michael & Mary D'Onofrio

Brian Gillespie
Ronald & Judy Hadley
Dave & Linda Karibo
Lance & Anne Kesterson &
Family

Thomas & Patricia Maio
Jim & Linda McCoy
M.S. & D.L. Moore
Tom & Cindy Pulfer & Family
Mac & Carol Smith
Michael Walsh
Nathan & Becky Weber

***In Memory of
Daniel F. Johnson***

Steven & Molly Boysel
W. Harold & Alice Boysel

***In Memory of
Arthur "Doody" Knox Sr.***

Luther Community Residents

***In Memory of
Vicki Macer***

Thomas & Kathleen Deam

***In Memory of
Marie Machlamore***

Luther Community Residents

***In Memory of
Rick Nelson***

Byron & Janet Fullerton

***In Memory of
Marvin Nichols***

Ray & Cheryl Kramer

***In Memory of
Dick Powers***

Transportation Research
Center, Inc.

***In Memory of
Clyde "Joe" Reames***

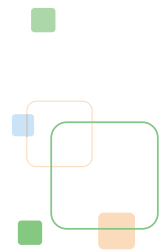
Celia Lange
Michelle Waddell Family

***In Memory of
Gerald Stierhoss***

Honda of America East
Liberty Plant

***In Memory of
Wilma VanHorn***

Royce & Deborah Day
Lee Deford
Michael & Kathryn Drennen
Judith Grubbs
Indian Lake Villa Residents
Karen Helms
Gloria Morris



***In Memory of
Betty Wolf***

Norma J. Beach

***In Memory of
Jane Younkman***

Ruby Smith

ONCOLOGY FUND

Belle Center United
Presbyterian Church
Missions Committee
A.L. & Ann Verbsky

***In Memory of
Donn Cost***

Robert & Mary Rackmales
Bernard & Norma Sweeney

**POWER UP
FOR FITNESS FUND**

General Mills Foundation

**ROY AND MIRAM METZ
MEMORIAL SCHOLARSHIP
FUND**

Marcia Davis

REACH OUT AND READ

Target

READ TO ME FUND

Peachtree Books & Co.

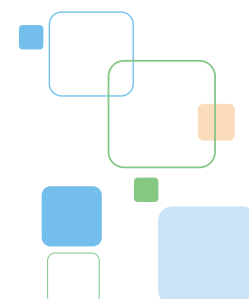
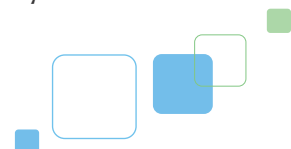
**RITA RIEDMILLER
MEMORIAL SCHOLARSHIP
FUND**

Richard Jay Roberts
Pamela Taylor

**ROOM RENOVATION
PROJECT**

Anonymous Donors
Anthony J. Beisler, MD, MBA,
FACS
Londa L. Davis and Robert
H. Davis, MD, PhD
Steve Haman, MD
Dr. Robert Lewis
Dr. Randall & Marla
Longenecker
Dr. Eric Schaub
Dr. Winfred & Willie Stoltzfus

CONTINUED ON NEXT PAGE



RUTH LYONS FUND

Ruth Lyons Children's Fund

UNRESTRICTED FUND

Jim Dailey
Margie Dunlap
Chuck & Choyce Earick
Robert Erwin
Mary Foulk
Betty Fulkerson
Sharon Hess
Thomas & Talma Heydinger
Nancy Johnson
Ruth Ann Kinney
David & Nancy Knight
Alberta Lambert
Margaret LaPorte
Joel & Donna Lehman
Harold & Barbara Marker
Kelly Lee-Marker
Dorothy A. Notestine
Patricia M. O'Connor
Betty Jean Park
Bill & MaryAnn Patterson
Winnie Pickering
Connie Regula
Chad & Jamie Ross
Mary E. Rostorfer
William & Margaret Shirk
Dwight Spencer
Cynthia E. Steiner
Lemert & Karen Swisher
Jim & Theresa Vermillion
Dr. & Mrs. A.L. Verbsky
Estate of Iva Lou Yoder

In Honor of Those in the Medical Profession

Pat & Deb Ellis

In Memory of Irene Clark

Honda of America East
Liberty Plant

In Memory of Ewing "Butch" Crawfis

Sue Crawfis

In Memory of Eleanor Donnelly

Jim & Janet Donnelly

In Memory of Bob Edgar Sr.

Dr. & Mrs. Matt & Ellen
Verbsky

In Honor of Dr. W. M. Finerty

Mary F. Montgomery

In Memory of Roberta M. Graber

Harry L. Graber

In Memory of C. H. Hertenstein

Mary Hertenstein

In Memory of Karl Morris

Sheryl Morris

In Memory of John F. Sowers

Joyce J. Sowers

In Memory of Ruth Tanger

Jim & Janet Donnelly

In Memory of Marty Varian

Jim & Linda Hilliker

IN-KIND DONATIONS

Dick & Nancy Harmon
Rath Information Systems
Wal-Mart Super Center

We have made every effort to properly recognize each of our valued donors. We apologize if we have omitted anyone. Please help us with corrections or omissions by calling the Foundation Office at (937) 599-7003.

Volunteers Make It Happen!

Our 125 active volunteers provide services throughout the hospital and at various community events. In 2011, our volunteers contributed just over 13,000 hours of volunteer service.

We thank all of our volunteers for their contributions to the health and well-being of our community. Recognized below are those volunteers who have volunteered 1,000 or more hours.

1,000 OR MORE HOURS

Katie Amidon
Martha Bayliss
Helen Cook
Susan Corwin
Beulah English
Wanda Fetters
Jean Fullerton
Barbara Kerrigan
Barbara Lee
Nina McPherson
Becky Meyer
Avalon Miller
Ginger Plikard
Connie Regula
Barb Rees

Cynthia Steiner
Pat Wallace
Lynda Wilkerson
Rose Mary Woods
Jean Zupp

2,000 OR MORE HOURS

Phyllis Brunson
Mary Foulk
Celia Hooley
Imogene Lenhart
Elsie Lucas
Janice Moore

3,000 OR MORE HOURS

Barb Allison

4,000 OR MORE HOURS

Dorothy Notestine
Wilma Skelly
Martha Stanley

5,000 OR MORE HOURS

Betty Hunt
B.J. Miller
Judy Verbsky



We invite you to become a volunteer at Mary Rutan Hospital. For more information contact Pam McBrien at (937) 651-6688.

Outstanding Service Recognized by Mary Rutan Foundation

For over 20 years, Mary Rutan Foundation has recognized deserving citizens or organizations that place service to humanity ahead of personal gain or recognition by making substantial contributions to the community and Mary Rutan Hospital. Today, the tradition continues. At the recent annual meeting of the Mary Rutan Health Association Ilene Heaton and Barbara Moore were recognized as the 2012 Meritorious Service Award recipients.

INTERNAL MERITORIOUS AWARD

Barbara Moore, Mary Rutan Hospital Director of Food Services, was selected as the internal meritorious service award recipient.

Some may question how much impact a food service department can have on the health care experience of patients and visitors to Mary Rutan. MRH's Food & Nutritional Services play an important role in patient recovery and well-being. Food service quality also influences the patients' satisfaction with their overall MRH experience. Promoting optimal nutrition leads to faster recovery and decreased length of stay.

Barbara Moore joined the Mary Rutan team in 2006. Since that time, she has made a tremendous impact on the hospital and her department. This quiet leader helps her employees find purpose and meaning in their work and is proactive in showing them how their actions contribute to better patient care. Under Mrs. Moore's leadership the Food and Nutrition staff has blossomed and grown to be one of the most cooperative, well respected departments in the hospital.

Some of the accomplishments during Mrs. Moore's tenure include the implementation of a new meal program – adjusting delivery times according to each patient's preference; initiating dietary "rounding" to assist patients with meal selections; and allowing patients to make meal selections at a time of their choice through the implementation of a special room service program. All of these efforts have resulted in better patient care, improved patient control over food choices, improved patient satisfaction, improved food temperatures and decreased food waste.

Mrs. Moore is an excellent professional role model and demonstrates an unflappable demeanor. No request is too large, too late, too problematic or too insignificant. Rather, she considers each and every dietary request, then quietly, effectively and efficiently works with her staff to deliver whatever is necessary, assuring quality product and quality service. Through her actions Mrs. Moore consistently fulfills the mission of the hospital by providing progressive quality health care with a personal touch, each and every day.



EXTERNAL MERITORIOUS AWARD

Recognized for her many contributions and selfless acts of service to the residents of Logan County, Ilene Heaton was selected as the 2012 External Meritorious Service Award Recipient. Beginning her career in the social services area, from 1975 through 1988, Mrs. Heaton worked in various agencies serving as a Rehabilitation Counselor for the visually impaired in Lima, a Program Manager for Logan County Residential Services and a Family Counselor for Logan County Drug and Alcohol Services. During this time, Mrs. Heaton was also active with the local United Way, serving as a volunteer for five years and as co-chair of the 1982 campaign with her husband Jerry.



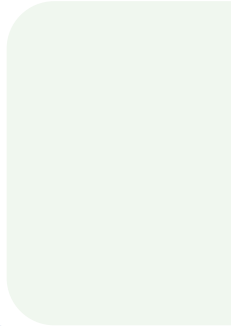
In June 1988, Mrs. Heaton was hired as the Executive Director of our local United Way. Initially, Mrs. Heaton's time was shared between Logan and Champaign counties. In 1996, she resigned the Champaign County position to devote more of her time to Logan County. During her 24-year tenure, Mrs. Heaton developed a "New Venture Fund," money set aside to address unmet needs in the community. Mrs. Heaton worked with community leaders to provide start-up grants for TriCare Hospice, Our Daily Bread, Loving Hands Adult Day Program, Family & Children First Council, Rachel's House, Mary Rutan Medicine Assistance, Don M. & Margaret Hilliker YMCA and Safe Haven. All of these later became United Way member agencies.

In addition, Mrs. Heaton implemented development of a Youth Allocations Committee. Since its inception, 140 teens have participated and \$82,000 has been awarded to numerous Logan County health and human services agencies, touching the lives of hundreds of youth in our community, not only through programming with area agencies, but in building strong leadership skills in the 140 youth that have served on the youth council.

Mrs. Heaton was instrumental in growing the United Way from 17 to 23 agencies and worked tirelessly alongside the many volunteers that she recruited to obtain over \$14 million in contributions during her 24 years as Executive Director.

In addition to her accomplishments at the United Way, Mrs. Heaton is an active participant and board member in other area organizations, serving for many years in Rotary, as a member of the Logan County Health Council, Mary Rutan Hospital's Institutional Review Board and as a board member of Logan County Children's Services.

We recognize Mrs. Heaton for these many accomplishments and her service to humanity and our community.



205 PALMER AVE. | BELLEFONTAINE, OH 43311 | (937) 592-4015

The 2011 Annual Report was published by the Marketing Department at Mary Rutan Hospital. For questions or comments, please call (937) 599-7036 or email us at lmiller@maryrutan.org.

