



Changing the definition of what  
a community hospital can be.

**Mary Rutan  
HOSPITAL**



**2017** COMMUNITY REPORT





## LETTER FROM OUR PRESIDENT

### WE'RE CHANGING THE DEFINITION OF WHAT A COMMUNITY HOSPITAL CAN BE

#### For Mary Rutan Hospital, 2017 was an exciting year.

We focused on redefining what a community hospital can be, as we planned and constructed the new Mary Rutan Health Center. And we built on the foundation of Mary Rutan Hospital's long-standing commitment to quality health care and satisfying patient care experiences.

Now, in 2018, you can experience the new definition of what a community hospital can be. At the Health Center, you will discover a new level of convenient access to Mary Rutan's progressive health care services and technology. In one location, we offer our community's first full-service, seven-day-a-week urgent care center, our region's most complete and advanced selection of therapy services, our state-of-the-art sports medicine facility, comprehensive occupational health services, and on-site laboratory, x-ray and pharmacy.

As we invested in facilities and technology, our caring health care team continued strengthening what truly defines Mary Rutan Hospital: our commitment to continually improving quality, safety and the experience we offer patients and their families.

#### We made major accomplishments in this regard in 2017:

- We earned ISO 9001 certification, with the guidance of DNV GL, a quality assurance and risk management provider. Certification to the ISO 9001 standard demonstrates the effectiveness of our quality management system in helping us consistently deliver quality, safe health care services for our patients.
- We received national recognition from the Leapfrog Group with an "A" Hospital Safety Score – a reflection of our unwavering focus on patients.
- Our Emergency Department, Family Birth Center, Therapy & Sports Medicine, Laboratory and Imaging Center all earned outstanding patient experience scores in 2017 – a result of patient experience initiatives implemented in 2017.

**Another success:** Participation in our Weight Management program exceeded projections. This is a clear sign that we are fulfilling another vital community need. To better meet this need, we have added staff and resources.

Looking ahead, we will continue to keep our eyes and ears directed to the changing health care needs of our community, so we can invest in services, technology and facilities that meet these needs and make our region a healthier place to live.

I thank our MRH team, our volunteers, our donors, our Board and our community for taking this journey with us over nearly 10 decades – and many years to come. To your health!

**Amanda C. Goble**  
President & CEO



*"Our community is blessed to have such a great hospital. Every person I came in contact with was extremely caring, knowledgeable and helpful."*



## Mary Rutan HOSPITAL



THIS IS  
**MARY**  
HOSPITAL  
*My Team*

## MARY RUTAN HOSPITAL LEADERS

### MARY RUTAN HOSPITAL BOARD OF DIRECTORS

Rick Hatcher – *Chair*  
Joeneé Purcell – *Vice Chair*

Scott Abraham  
Jeffrey Barrows, DO  
Paul Benedetti  
Doug Chamberlain  
Vicci Elder  
Rick Gildow  
Jeff Holycross  
Nancy Knight  
Don Leis  
Darin Olson  
Jack Reser  
Thomas Simon  
Matthew Verbsky, DVM

### MARY RUTAN HEALTH ASSOCIATION BOARD OF DIRECTORS

Jeff Holycross – *Chair*  
Scott Abraham – *Vice Chair*

Steve Austin  
Jeffrey Barrows, DO  
Paul Benedetti  
Doug Chamberlain  
Rick Gildow  
Rick Hatcher  
Joan Haushalter  
Mike Phillips  
Joeneé Purcell  
Jack Reser  
Scott Shellhaas  
Matthew Verbsky, DVM

## SENIOR LEADERSHIP MARY RUTAN HOSPITAL

### Amanda Goble, President & CEO

Mary Rutan Hospital

### Chad Ross, VP

Operations

### Grant Varian, MD

Medical Director

### Laura Miller, VP

Marketing & Communications

### Steve Brown, VP

Fiscal Services

### Tammy Allison, VP

Community Relations & Foundation

### Tammy Gump, COO

Logan View LLC

### Tom Denbow, VP

Physician Integration

### Vickie Crumley, VP

Human Resources

## Mary Rutan FOUNDATION BOARD MEMBERS

Joan Haushalter – *Chair*  
Sara Stahler – *Vice Chair*

Douglas Chamberlain  
Melody Couchman  
Deborah Ellis  
Nancy Knight  
Michael Madden  
William Patterson  
Joeneé Purcell





*“With the generous support of individuals, foundations and corporations, we have built a legacy for a healthy future.”*  
–Mandy Goble

## NEW MRH HEALTH CENTER SETS NEW STANDARD FOR A COMMUNITY HOSPITAL

Mary Rutan Hospital broke ground in 2017 to redefine what a community hospital can be.

And on February 12, 2018, patients began benefitting from this new standard of care, at the new Mary Rutan Health Center – a three-story, 75,000-square-foot facility, conveniently located for residents of Logan and surrounding counties, at the intersection of U.S. Highways 68 N. and 33.

### Convenience in One Location

For ultimate patient convenience, the new center brings together in one easily accessible location these state-of-the-art outpatient services:

- Our **community’s first full-service urgent care**, open seven days a week, 9 a.m.-8 p.m.
- **Comprehensive outpatient therapy services** – physical therapy, aquatic therapy, swallowing and voice therapy, occupational therapy and speech and language therapy – previously provided at other sites
- **Corporate health services**, including high quality work injury treatment, occupational testing and case management, previously provided at the hospital
- **Sports medicine**, including sports enhancement training, supported by a therapy pool, turf and court simulated training space and advanced training equipment
- **Laboratory and x-ray** machines available to urgent care and corporate health patients
- An on-site **pharmacy** for added patient convenience

“The new Mary Rutan Health Center transforms health care for our patients and community,” Mary Rutan Hospital President and CEO Mandy Goble says. “Our new urgent care is providing patients a convenient, cost-effective, quality alternative to emergency care for urgent, non-life-threatening illness and injuries. And the health center enhances patient experience with three times more space for our corporate health, therapy and sports medicine services. All in a single location.”



### Room to Grow

Plus, the new facility provides extra space for Mary Rutan to grow with changing health care needs of Logan County and the surrounding area.

The second floor includes a finished clinic ready for new physicians to set up practice. The third floor offers unfinished space that can be quickly completed for new services as Mary Rutan discovers opportunities and unmet community needs.

One such opportunity is a sports medicine orthopedic clinic that will be provided by orthopedics and sports medicine specialist Dr. Nicholas Peters. He will join Mary Rutan Hospital in August. Mary Rutan will continue to recruit more specialty providers to the Health Center.

“By increasing the region’s access to more specialists, patients and their family members can enjoy less travel time and expense, as well as the convenience of high quality, specialized care, in a patient-centered environment,” Chad Ross, Mary Rutan Hospital’s vice president of operations, says.

The Health Center – the largest of MRH’s 11 off-site locations – is invigorating the local economy, employing 125 medical professionals and support staff. About 30 of these positions are new jobs.

The 12-acre Northpointe Center development, on which the Health Center is built, offers further opportunity for economic growth. Mary Rutan is working with the Logan County Chamber of Commerce and local government leaders to explore development of a hotel, restaurants and retail businesses on the site.

### You Spoke. We Listened.

“The Health Center is a clear example of Mary Rutan Hospital staying attuned to the health care needs of our community,” Goble says. “This is just the latest chapter in Mary Rutan Hospital’s proud 99-year history of meeting the health and wellness needs of our community.”

Urgent care was one of the top areas of community need identified by people who completed the most recent Community Health Needs Assessment (CHNA), conducted by MRH and community partners.

Another need identified by the CHNA and addressed by the new Health Center: How to meet the growing demand for rehabilitation services. The MRH Physical Rehabilitation Center, designed to serve 70 patients a day, was straining to serve nearly 200 a day. And the center had to send patients to the YMCA for aqua therapy.

### Community Answers the Need, Too

As MRH responded to the community’s need for expanded health care services, the community has answered MRH’s call for financial assistance to fund the project.

About \$2.5 million has been raised through the hospital’s first major capital campaign in more than 10 years. An additional \$1 million has been committed from the Mary Rutan Foundation.

On the strength of the hospital’s operational performance, the remaining project costs are being covered through a combination of internal cash reserves and new debt.

**For a list of major donors to the Health Center capital campaign, turn to Page 12.**

“With the generous support of individuals, foundations and corporations, we have built a legacy for a healthy future,” Goble said.





## REECE'S TRIBE: THE MARY RUTAN HOSPITAL THERAPY TEAM

THERAPISTS BRING HOPE, SUPPORT, RESULTS FOR DEVELOPMENTALLY DELAYED TODDLER AND HIS PARENTS.

Reece Mustain is a two-and-a-half-year-old with a bubbly personality, a love for music, and Down syndrome.

When Reece walks into the Mary Rutan Health Center for speech, occupational and physical therapy, says his mom, Tiffany Mustain of

Kenton, "it's like an episode from (the TV show) 'Cheers.' Everyone knows his name. He owns the place. He waves and smiles and interacts very well with everyone. Reece loves his therapists."

The feeling is mutual. Ask any of Reece's therapists.

When first evaluated for feeding therapy, in December 2015 at two months old, Reece met developmental targets. And because of Tiffany and her husband Tom's efforts, Reece didn't require feeding therapy until late 2016.

But Tiffany and Tom became anxious as Reece began lagging behind the developmental milestones that they'd seen their three older children cross over. Eventually, Reece's therapy team eased their worries.

### Building Confidence

"Part of relaxing through the process comes from knowing that they are all doing everything that they can do for Reece," Tiffany said. "We are definitely more relaxed now, and I am confident that Reece is getting the best therapy services possible."

The Mustains have since seen Reece achieve many milestones. For instance, mastering gross motor skills, from rolling, to sitting, to standing, to walking.

"I think Tiffany was most excited in November 2017 when Reece took some of his first steps to her in the rehab center waiting room," remembers Carrie Robinson, PT, who teamed with Kristen Layman, PT, DPT, to help Reece during this time. "There were tears of joy from her as well as us."



Physical therapists are now working with Reece on climbing stairs, jumping, throwing, catching and kicking. And the entire team of speech, physical and occupational therapists is preparing him for the start of preschool next fall at Simon Kenton School in Kenton.

"I 100 percent credit his progress to his therapists," Tiffany says. "They are always on top of what he needs to do, how he needs to do it and making sure he actually does what he needs to do."

She adds that when he doesn't cooperate, "they are great at finding creative ways to get him to interact. They also remind us, as the parents, that it is often his timeline and not always our timeline."



## Mary Rutan Hospital THERAPY & SPORTS MEDICINE

*"We are definitely more relaxed now, and I am confident that Reece is getting the best therapy services possible." –Tiffany Mustain*

### Preparing for Preschool

When he started occupational therapy, Reece couldn't maintain grasp of objects. He's now making progress in coordinating both his arms and hands, building block towers, completing pre-writing skills, and working on self-help skills – paving the way to preschool.

In November, he graduated from feeding therapy, having achieved all age-appropriate milestones, such as self-feeding all types of food.

"At therapy they do a lot of hands-on teaching and always explain the steps that they are doing," Tiffany says. She adds that the therapists make themselves available outside of

appointments to answer questions and concerns.

"The staff members here are my friends, not just Reece's therapists. They all work together for Reece in and out of the office."

And the therapists appreciate the involvement of Reece's parents. Speech therapist Susan (Hawke) Johnson, MS, CCC-SLP, says, "Reece is engaging and super playful. He has an amazing set of parents that are super involved. I am always updated on what he is doing at home and anything new he is doing. This is important and allows us to build on the skills that are improving when Reece is not at the Health Center."

After Reece begins preschool, the Mustains will continue to bring Reece to therapy at the Mary Rutan Health Center, even though his school has physical and occupational therapists.

"The Mary Rutan Hospital Therapy and Sports Medicine staff is our tribe, our team, our people," Tiffany explains.



## MARY RUTAN FOUNDATION MERITORIOUS AWARD

## CHARLES EARICK HONORED FOR SERVICE TO COMMUNITY AND MARY RUTAN HOSPITAL

The Mary Rutan Foundation presented Charles R. Earick, a long-time community leader and volunteer, with the 2018 Meritorious Service Award at the Mary Rutan Health Association Annual Meeting in March.

For the last 27 years, the award has been given to an individual or group for substantial contributions to the health and well-being of the community – and for placing service to humanity ahead of personal gain or recognition.

Mr. Earick was honored for dedicated service and leadership in Logan County, including 26 years in various roles with Mary Rutan Hospital. His service has included:

- Logan View Board, 1988-1994
- Mary Rutan Health Association Board, 1994-2000, 2001-2007 and 2008-2014
- Mary Rutan Hospital Board of Directors, 1994-2000 and 2004- 2012, including service on the Finance Committee from 2005 to 2012, board vice chair in 2006 and 2007 and board chairman in 2007 and 2008
- Mary Rutan Foundation Board, 2000-2014, including chairman in 2012 and 2013

"Chuck epitomizes all there is in being a leader," said Mandy Goble, president and CEO of Mary Rutan Hospital. "While

-serving on all four of our boards over the course of 26 years, he brought a strong vision of what our organizations could and should be within our community. He wasn't afraid to get involved in whatever way it took to make it happen. I have always valued Chuck's passion, his balanced perspective, his sense of humor and, above all, his dedication to our community."

A native of Logan County, Mr. Earick returned to his hometown after college and military service, to work at Citizens Federal Savings and Loan, raise his family and serve his community. He has also provided volunteer service to the Hilliker YMCA, Green Hills Retirement Community, Logan County Community Growth Committee, Logan County Retention and Expansion Committee, Bellefontaine Downtown Business Partnership, the James Forsythe Milroy Foundation, the United Methodist Church and the Sloan Foundation.





# MARY RUTAN HOSPITAL OFFERING 3D MAMMOGRAPHY



Mary Rutan Hospital Crawfis Imaging Center now offers Low Dose Genius™ 3D Mammography™ exams from Hologic, a global leader in breast cancer detection. A first for Logan County and the region, 3D mammography helps detect breast cancer in its earliest stages and is superior to conventional digital mammograms.

In a conventional mammogram, overlapping tissue can hide breast cancers and normal breast tissue may appear abnormal, leading to unnecessary callbacks. Low Dose Genius™ 3D Mammography™ exams are an advanced type of digital mammogram that offer better cancer detection, fewer call backs, minimal compression time and greater peace of mind at a dose comparable to a conventional digital mammogram.

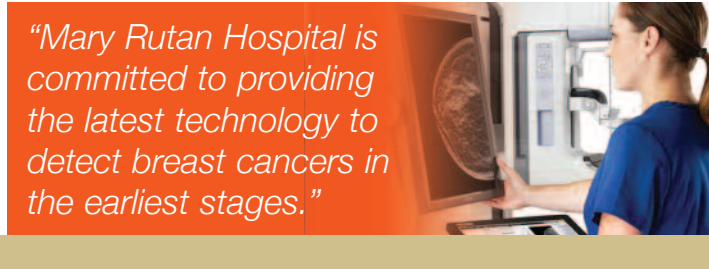
Large clinical studies have demonstrated the positive benefits of low dose 3D Mammography exams including:

- Earlier detection of small breast cancers that may be hidden in a conventional mammogram
- Greater accuracy in pinpointing size, shape and location of abnormalities
- Fewer unnecessary biopsies or additional tests
- Greater likelihood of detecting multiple breast tumors
- Clearer images of dense breast tissue
- Maintained 3D Mammography™ exam performance, at a 2D-like dose

"Mary Rutan Hospital is committed to providing the latest technology to detect breast cancers in the earliest stages, when treatment is most effective. By offering 3D mammography, we can more effectively pinpoint the size, shape and location of abnormalities. This leads to better detection and greater peace of mind for patients," said Julie Klopfenstein, director of radiology for Mary Rutan Hospital.

One in every eight women will develop breast cancer. If caught early, the five-year survival rate is almost 100%. There are various guidelines suggesting when women should start screening and how often they should be screened, but all medical groups agree that screening saves lives. The American College of Radiology recommends an annual screening mammogram beginning at age 40 and these are the guidelines nearly all insurance companies follow.

■ **For more information, or to schedule a 3D mammography exam, please contact Mary Rutan Hospital Crawfis Imaging Center at 937-592-1883.**



# MRH AGAIN RECEIVES AN 'A' HOSPITAL SAFETY GRADE



Mary Rutan Hospital is again one of a select few hospitals in the region to earn an "A" grade for keeping patients safe and meeting the highest health care safety standards in the U.S. This recognition comes from the Leapfrog Group, a national nonprofit health care organization that promotes quality, safety and transparency in the U.S. health care system.

The Leapfrog Group grades hospitals nationwide for their performance in preventing errors, infections and accidents that can harm patients.

"We are proud to receive an 'A' grade from the Leapfrog Group for the second straight time," said Mandy Goble, president and CEO of Mary Rutan Hospital. "These hard-earned grades are evidence of the outstanding efforts made by our clinical and

quality teams to improve patient safety and clinical quality throughout our organization."

"It takes consistent, unwavering dedication to patients to achieve the highest standards of patient safety," said Leah Binder, president and CEO of The Leapfrog Group. "An 'A' Safety Grade recognizes hospitals for this accomplishment. We congratulate the clinicians, board, management and staff at Mary Rutan Hospital for showing the country what it means to put patients first."

In assigning A, B, C, D and F grades to more than 2,600 U.S. hospitals, the Leapfrog Hospital Safety Grade program uses 27 publicly available, peer-reviewed hospital safety measures chosen and analyzed by a panel of top patient safety experts.

"Our primary focus is to achieve the highest level of safety and quality care for our patients. We continue to set the bar higher each time," said Dr. Grant Varian, medical director of Mary Rutan Hospital. "This year we focused on several initiatives to improve quality, safety and patient experience. This score is an excellent and welcome affirmation of the care patients expect and receive from Mary Rutan Hospital."

The honors from Leapfrog are the most recent in a long list of achievements for Mary Rutan Hospital. These include being recognized as one of the Top 100 Rural and Community Hospitals in the United States and achieving one of the highest value-based purchasing scores in Ohio, earning incentive payments for the quality of care Mary Rutan Hospital provides Medicare patients.

■ **Visit [hospitalsafetygrade.org](http://hospitalsafetygrade.org) for Mary Rutan Hospital's full Leapfrog grade and tips for staying safe in the hospital.**



# 2018 COMMUNITY EVENTS

## CLASSES

### BASIC LIFE SUPPORT PROVIDER CLASS

July 11th, 5:30 to 9:30 p.m.  
 August 1st, 8 a.m. to Noon  
 September 5th, 5:30 to 9:30 p.m.  
 October 3rd, 8 a.m. to Noon  
 November 7th, 5:30 to 9:30 p.m.  
 December 5th, 8 a.m. to Noon  
 Mary Rutan Hospital Crossroads Business Center, 21 Hunter Place, Bellefontaine

■ \$40 program fee includes instruction, AHA student workbook and course completion card.

Call (937) 599-7013 to register

### CREATING A HEALTHY ME

Trying to stick to a special diet or fitness regime can be tough. Consider learning how to make healthier lifestyle choices to accomplish your goals by participating in the Creating a Healthy Me class. This 8-week program is instructed by licensed professionals. Classes are held each Monday beginning September 10th, at 1 p.m. or 5:30 p.m.

Classes held at Mary Rutan Health Center

■ \$25 program fee includes health screening, weekly giveaways, class instruction and chance to win a FitBit.

Call (937) 599-7005 to register

### SOLID GROUND CLASSES

4-week fall prevention program  
 A new class begins October 10th, 10 a.m. or 1 p.m.

FREE Classes held at Mary Rutan Health Center

Call (937) 599-7005 to register

## EVENTS

### DIABETES SELF MANAGEMENT WELLNESS EVENT

Thursday, September 6th from 6 to 8 p.m.

Mary Rutan Hospital Crossroads Business Center, 21 Hunter Place, Bellefontaine  
 Call (937) 593-1236 for more information

### LOGAN COUNTY FAIR

Mary Rutan Hospital is pleased to offer these complimentary activities at this year's fair.

- Monday, July 9th – A Step in the Right Direction
- Tuesday, July 10th – Skin Cancer Screening
- Wednesday, July 11th – Volunteer FAQ's
- Thursday, July 12th – Eat a Rainbow
- Friday, July 13th – Blood Pressure Screening
- Saturday, July 14th – Body Mass Screening

All events will take place in the Mary Rutan Hospital Entertainment Tent from 11 a.m. to 1 p.m.

Call (937) 599-7005 or email [Christie.Barns@maryrutan.org](mailto:Christie.Barns@maryrutan.org) for more information.

### MEDICATION TAKE BACK

Keep our community safe and free of unused medication. Always dispose of unused or expired medications at a permanent drop box location or attend our Take Back event on October 27th from 11 a.m. to 1 p.m. at Mary Rutan Hospital under the canopy.

PERMANENT LOCATIONS IN LOGAN AND CHAMPAIGN COUNTY:

■ **COMING SOON... NEW LOCATION** at Mary Rutan Hospital

■ Logan County Sheriff's Office  
 284 Co. Rd. 32 S., Bellefontaine, 24 hrs/7 days a week/365 days a year

■ Russells Point Police Department  
 433 Orchard Island Rd.  
 9 a.m. to 4:30 p.m., Monday, Tuesday, Thursday & Friday

■ Champaign County Sheriff's Office  
 300 Miami Street, Urbana  
 8 a.m. to 4 p.m.

■ Saint Paris Police Department  
 357 W. Main Street, St. Paris  
 8 a.m. to 4 p.m.

■ Mechanicsburg Police Department  
 18 N. Main Street  
 8 a.m. to 4 p.m.

### WEEKLY FARMERS' MARKET

June through September

Located under the canopy at the hospital's main entrance, locally grown produce is available each Wednesday from noon until 3 p.m.

## SUPPORT GROUPS

### BREAST CANCER SUPPORT GROUP

July 10th, 7 p.m. to 8 p.m.

November 13th, 7 p.m. to 8 p.m.

Mary Rutan Hospital Crawfis Imaging Center

### CELIAC DISEASE SUPPORT GROUP

2nd Monday each month at 6:30 p.m.

Mary Rutan Hospital Crossroads Business Center, 21 Hunter Place, Bellefontaine  
 Call (937) 651-6428 for more information

### DIABETES SELF-MANAGEMENT SUPPORT GROUP

1st Thursday each month, September through May at 7 p.m.

Mary Rutan Hospital Crossroads Business Center, 21 Hunter Place, Bellefontaine

### LOGAN COUNTY BRAIN INJURY SUPPORT GROUP

4th Monday each month at 6:30 p.m.

Mary Rutan Hospital's North/South Conference Room  
 Call (937) 593-1236 for more information

### MENDED HEARTS SUPPORT GROUP

2nd Thursday each month,

September through May at 6 p.m.

Mary Rutan Hospital's North/South Conference Room  
 Call (937) 935-1747

Please visit the MRH website for updates and any additional events to be added throughout the year, at [www.maryrutan.org](http://www.maryrutan.org)



# COMMUNITY BENEFITS REPORT

## Fostering and Supporting a Healthier Community

A healthy community is one that continuously creates and improves both its physical and social environments, helping people to support one another in aspects of daily life and to develop to their fullest potential. It is a community designed and built to improve the quality of life for all people who live, work, worship, learn and play within its boundaries – where every person is free to make choices amid a variety of healthy, available, accessible and affordable options.

(Source: US Dept. of Health & Human Services Healthy People 2010 report)



# MRH INVESTS MORE THAN \$16.7 MILLION

In 2017, Mary Rutan Hospital invested more than \$16.7 million toward improving the health of our community through health education and prevention programs, screenings, and financial assistance for area residents with limited resources for health care.

This investment continues Mary Rutan Hospital's long-standing commitment to promote the health and well-being of Logan County area residents, within and beyond the walls of our hospital and health care facilities.

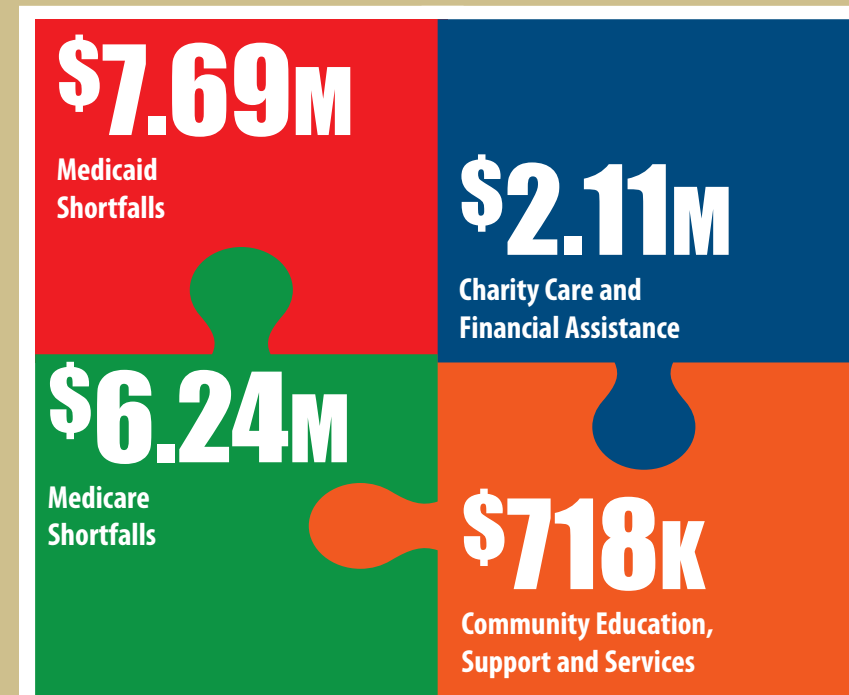
The community-minded health care professionals of Mary Rutan Hospital reach out to provide quality health care and wellness programs across a diverse population in schools, workplaces, neighborhoods and places of worship.

### Charity Care, Financial Assistance, Reimbursement Shortfalls

Mary Rutan Hospital provides comprehensive health care to all community members, regardless of financial circumstance. We preserve the dignity of all patients, making financial counselors available in the hospital and by phone to help with payment plans and to provide access to federal, state and local assistance programs.

## \$16.7 MILLION

MARY RUTAN HOSPITAL'S 2017 INVESTMENT IN COMMUNITY BENEFITS\*



\*Numbers are based on 2017 unaudited financial information.



In 2017, Mary Rutan Hospital provided charity care and financial assistance programs, as well as covering deficits created by Medicare and Medicaid payments that fell below the cost of care that we provided.

You may reach out to one of our financial counselors at any time, at 937-651-6446, for assistance. And you can find our financial assistance policies and application on the hospital website at [maryrutan.org/patients-financial-assistance](http://maryrutan.org/patients-financial-assistance).

### Community Health and Wellness Initiatives

Mary Rutan Hospital partners with more than 20 community agencies and organizations to address health and wellness needs and risks identified in Logan County's Community Needs Assessment and outlined in the Community Health Improvement Plan. The identified areas of need and risk include:



- Healthy living to prevent obesity
- Drug abuse (including opiates)
- Mental health
- Access to and awareness of health resources

Mary Rutan has dedicated funds and resources to promote healthier lifestyles through proper nutrition, physical activity and weight loss, delivering nearly 75,000 touch points of service to adults and children in Logan County. Examples include:

- The Creating a Healthier Me, Power-up 4 Fitness and Solid Ground Falls Prevention Program in which more than 900 youth and adults participated
- The Healthy Habits, Healthy You initiative, including the Winter Walking Program—Walk with a Doc in which 230 people participated through a partnership of MRH, the Bellefontaine Joint Recreation District, Indian Lake High School and Bellefontaine Elementary School
- Eight locally owned restaurants help diners make healthier meal selections by labeling healthier menu items with our Healthy Habits Healthy You CHOICE sticker
- Steve's Market & Deli in DeGraff and Urbana have joined this initiative by labeling Healthy CHOICE grocery items,

providing displays and hosting health screenings and educational sessions. Mary Rutan Hospital hopes to expand this initiative in 2018 in other independent grocery stores.

- 250 individuals participated in Mary Rutan Hospital's Weight Management Clinic. Besides losing weight, participants lowered their blood pressure by 5 to 10 percent in 12 weeks. Many reduced or eliminated their need for blood pressure medication and lowered other risk factors.

### Access to Health and Wellness Services

The opening of the community's first full-service urgent care at the new Mary Rutan Health Center, provides the community a lower cost, more accessible, 7-day-a-week option for care of injuries and illness not requiring emergency treatment.

Mary Rutan Foundation continues to fund the Call-A-Nurse Program, allowing Logan County residents to call with illness and health questions. The Foundation also supports the 211 Help Line to connect Logan County residents to available community resources.

### Community Building & Support

We believe in volunteering, supporting our community and collaborating with other organizations to improve the quality of life in the communities we serve. As a part of this commitment, Mary Rutan Hospital provides financial and in-kind support to area schools and nonprofit organizations. In addition, we encourage our employees and leadership team to volunteer in the community and provide professional support to area agencies and organizations. This contribution added up to more than \$466,263 in 2017.

### Education for Health Professionals

For many years Mary Rutan Hospital has been a major supporter of education for medical professionals, preparing future generations to begin careers in health care. In 2017, we invested nearly \$119,000 in student internships, clinical rotations, and medical scholarships and loans.

Visit the Mary Rutan Hospital website, [maryrutan.org](http://maryrutan.org) or call the Community Relations Department at 937-599-7003 for copies of the Logan County Community Needs Assessment, Community & MRH Health Improvement Plan or MRH financial assistance policies and applications.



WITH SINCERE GRATITUDE

Together We Can.... Thank You!

The gifts that you have shared in support of the Together We Can Capital Campaign contributed to a year of abundant generosity, enabling Mary Rutan Foundation to meet its campaign goal and to devote over \$3.2 million towards the construction and completion of the new Mary Rutan Health Center.

These gifts are an investment in the future of the health and wellness of our community. They bring improved access of care through the opening of the community's first full-service urgent care including x-ray, lab and retail pharmacy services. They bring new and expanded services for corporate health, therapy and sports medicine services, including an onsite therapy pool, along with room to grow and bring new and expanded service to meet the health and wellness needs of our community now and in the future.

We thank you for entrusting us with your gifts and for working with us to deliver our promise of providing progressive, quality health care with a personal touch. You've helped to improve the lives of those whom we are so privileged to serve.

TOGETHER WE CAN HEALTH CENTER CAPITAL CAMPAIGN

COMMUNITY DIVISION

Legacy Donor  
Honda of America Manufacturing, Inc.

Leadership Donor  
Mobile Instrument Service

Major Donor  
Thomas & Marker Construction Co.

Benefactor Donors  
Harold & Barbara Marker  
Mary Rutan Hospital Guild  
NEX Transport  
Quest Federal Credit Union  
Thompson, Dunlap & Heydinger

Special Donors  
Belltech Corporation  
C N A  
Citizens Federal Savings and Loan Association  
Liberty National Bank  
Robinaugh EMS, LLC  
Westfield Insurance

Friends Donors  
Duff's Quarry  
Ohio Ready Mix  
Shelly Chambers

BOARD DIVISION

Benefactor Donors  
Pat & Deborah Ellis  
The Simon Family

Special Donors  
Steve & Maureen Austin  
Mark & Joan Haushalter  
Darin & Jennifer Olson  
Ben & Sara Stahler

Friends Donors  
Scott & Julie Abraham  
Paul & Nancy Benedetti  
Doug & Patty Chamberlain  
Melody Couchman  
Vicci Elder  
The Gildow Family

Benefactor Donors  
Rick & Jill Hatcher  
Jeff & Lynda Holycross  
David & Nancy Knight  
Don & Sherry Leis  
Mike & Connie Madden  
Bill & Mary Ann Patterson  
Brian & Joeneé Purcell  
Jack & Heidi Reser  
Scott & Debbie Shellhaas  
Dr. & Mrs. Matt & Ellen Verbsky

MEDICAL STAFF DIVISION

Honor Roll Donors  
Robert & Londa Davis  
Clifton & Christine Hood  
Hassan Semaan  
Grant & Cheryl Varian

Campaign Investor Donors  
Anthony J. Beisler, MD, MBA, FACS

Evans & Kathleen Dixon  
Gregg Fulmer, MD

Campaign Contributor Donors

Dr. Roger G. Amigo  
Dr. & Mrs. Tom Darrah  
Steve Haman, MD  
Mr. & Mrs. William H. Malone II  
Ken & Doris Miller  
Dr. Eric Schaub  
Dr. Winfred & Willie Stoltzfus

EMPLOYEE GIFTS DIVISION

Honor Roll Plus Donors

Tom & Tammy Allison  
Denyse & Keith Bayliss  
Beach Speech Pathology Services, Inc.  
Alan & Joanna Burr  
Mike & Vickie Crumley  
Casey & Cheryl Eagy  
Bill & Vicki Fout  
Bradley & Janine Francis  
Rob & Mandy Goble  
Tammy & David Gump  
Jeremiah Haver, PTA  
Dan & Mitzi Hess  
Linda Hiltz  
Ed & Jan Houser-Golliday  
Joe, Kim, John & Emily Kirby  
Darrel & Julie Klopfenstein  
Mark & Kristen Layman and Family  
Scott & Carmen LeVan  
Mary B. LeVan  
Eric May  
Mike & Stephanie Mosbarger  
Kristopher & Christina Myers  
Siders Family  
Ted Patton  
Shannon M. Pickering  
Tom & Vicki Rapp  
Toni Hurley Reames and Children - Brittany Young, Dustin Roby and Marah Reames

The Reynolds Family  
The Chad & Jamie Ross Family  
Anita K. Salyer - In loving memory of Bertha J. Garland  
Jeff & Kim Sanford  
Todd & Jayne Shields and Family  
Carol Simpson  
Cindy & Jesse Smedley  
Michael and Kimberly Titus  
Jim & Theresa Vermillion  
Jonathan Willis - In honor of Eric & Kay Dudgeon  
Mike, Kristy, Lane & Clay Wisner  
Chad Yelton and Family  
Gavin, Kristen, Mullaney, Ethan & Liam Yoder  
Ron & Kelli Zimmerman

Honor Roll Donors  
Steve & Bonnie Allen  
Lori Arledge  
Jeffrey & Kristin Daniels  
Alina Bailey - In memory of Tandy Mullett

The Barns Family - Christie, Dalanie, Carlie & Addie  
Brian Zak

Chris & Tammy Burkhammer and Family - In memory of Barb Butler

Childs Family  
Holly Clifford  
Rebekah J. Dappert  
Tina & David Dauber  
Tom Denbow and Family  
Frank & Jessica Gliha  
Roger & Robin Goff  
Tige & Michelle Hamm  
Hannah Hartsel  
Jennifer Heminger  
Michael Hoehn  
Keri & Don Householder  
Misty Howkins  
Alysha Huebner  
Todd & Tammy Inskeep - In memory of Mary Lou Inskeep

Danielle Jenkins - In memory of Kenneth Hodge & Lawrence Chiles Jr.

Darrin & Sarah Leichty  
Nancy Groves-Leonard  
Alan & Kathy Luthman  
Rod & Shelly Miller  
Ben & Holly Miller  
Sandy Niese  
Brenda Richardson  
Carrie & Jim Robinson  
Kate Schmerge  
Mary Kay Smallcombe  
Brian & Abbey Sprang  
Diane Stuck  
Brooke Stump  
Jason & Katie Taylor  
Jeffrey & Pam Taylor  
Nicholas & Ashley Wood and Family  
Pete & Bobbi Kay Yarchak



Krista R. Liles  
Wendy Lyons  
Shirley Mifsud - In memory of Jon Weeks  
Tom & Laura Miller - In memory of Susan Miller & Mark Miller  
Betsy & Rick Moffett  
Adam T. Palmer  
Peggy Patrick  
Rick & Theresa Payne  
Charles Roberts - In memory of Bud & Lib Roberts  
Melissa Sinay  
Christine Smith  
Melissa Straker  
The Todd Family  
Theresa VanderRoest  
Pam Wagner  
Josh & Erin Watson  
Tabitha Werling  
Chancey B. Wick  
Trisha Wyatt

Campaign Contributor Donors

Michael Allen  
Rodney & Susan Allen  
Christopher & Jessica Anders and Family  
Kelly Armstrong  
Emily Bear  
Libby Behnke  
Dennis Bishop - In honor of Pam Craft  
Pamela Bolton  
Beth Born  
Dan & Barb Bowers  
Amber L. Brentlinger  
Steve & Mary Brown  
Brownlee Family  
Lucille Burden  
Genelle Burkhart  
McKenzie Callicoat  
Christine Castle  
Peter & Elisabeth Cheetham  
Nicki Clark  
Brittany Dallas  
Jayne Davis - In memory of Norma L. Davis  
Jennifer Dawson  
Doris Elkins  
John & Kayla Englehardt  
Chelsi Fielder  
Susan Fraber - In memory of Chuck Yelton - In Honor of Sandy Yelton  
Abbie Fullerton  
Kevin & Jaime Gariety and Family  
Suzanne Gillespie  
Cheryl Goetz  
Abigail Gompers, ATC, LAT  
Michael Grant  
Jessie Greavu  
Lindsey Hall  
Sharon Halter  
Nancy & Dick Harmon  
Hannah Hawke  
Katey Headley  
Alexandra Heffner  
Linda Hoover  
Lorie A. Hulbert  
Kathy Jarrahan  
John & Christine Kennedy  
Carrie Kline  
Kevin & Jan Knight

Campaign Investor Donors

Taylor T. Allison  
Anonymous - In memory of Lee Spriggs  
Terry & Susan Bay  
Steve & Lori Bowman  
The Brugler Family  
Johnna Cassell  
John & Angie Cira  
Jim, Kristy, Jay, Jack & Jamison Clement  
Tonya & Merle Coblentz  
Ms. Cindy Copeland  
Zerah, Brooxie, Zander, Cooper Crouch  
Karen Downing  
Melinda Floyd  
Katrina Geis  
Mollie Gibson  
Kathy Griffith  
Regan Guenther  
Nicole & Eric Hall  
Pam Harless  
Lulu Elizabeth Huffman  
Elsie Kearney  
Ben & Amy Keller  
Kathy & Scott Klopfenstein  
The Dave Kruse Family - In memory of Carolyn Kruse  
Lisa Lay

Ross & Kywana Koogler - In memory of Portia & Offitt Harless  
Kristen & Caleb Lang and Family  
Tiffany R. LeVan  
Erica Lewis  
Lianne Linet  
Adam T. Palmer  
Kayla Mansfield - In memory of Gregory Smith  
Andrea Markin  
Abby McKinney  
David T. McPherson  
Jillian Metz  
Julia Miller  
Barbara Moore  
Paige Moser  
Ashley Mummert  
Ryan Newland  
Scott & Lisa Nichols and Family  
Marian Nolan  
Nancy Osbun  
Beverly Oswalt  
Adelyn Passaro, MS, AT  
Randall Petersen  
Cathy Pool  
Janet Prickett  
Sandy & Steve Rabenstein  
Jocelyn Renkert  
Stacey Robinson  
Tiffany Rockhold  
Tricia Rayl  
Angela Rutan  
Judi Schinness  
Kerri Shields  
Shawn & Jennie Shutt - In honor of Dorwin Burke  
Mike & Karen Smith  
Christine Snider  
Joetta Spain  
Daphany Stover - In memory of Edith & Okey Havens  
Tony & Angela Stratton  
Clint & Anne Stuck and Family  
Taylor Terrill  
Niki Thomas  
Jessica Titus  
Casey Truesdale  
Kay Umstead  
Megan VanderRoest  
Melissa Wagoner - In memory of Richard Kappel  
Christine Ward  
Barb & Rick Weaver  
Pam Webb  
Brittany Whitt  
Ed & Shelly Wisner  
Candice Woods  
Carrie Yoder

Campaign Investor Donors

Taylor T. Allison  
Anonymous - In memory of Lee Spriggs  
Terry & Susan Bay  
Steve & Lori Bowman  
The Brugler Family  
Johnna Cassell  
John & Angie Cira  
Jim, Kristy, Jay, Jack & Jamison Clement  
Tonya & Merle Coblentz  
Ms. Cindy Copeland  
Zerah, Brooxie, Zander, Cooper Crouch  
Karen Downing  
Melinda Floyd  
Katrina Geis  
Mollie Gibson  
Kathy Griffith  
Regan Guenther  
Nicole & Eric Hall  
Pam Harless  
Lulu Elizabeth Huffman  
Elsie Kearney  
Ben & Amy Keller  
Kathy & Scott Klopfenstein  
The Dave Kruse Family - In memory of Carolyn Kruse  
Lisa Lay

MARY RUTAN FOUNDATION DONORS

CARDIOVASCULAR SERVICES

In Memory of Mary Foulk  
Sheryl Morris  
In Memory of Dick Knowlton  
Sheryl Morris  
In Memory of Carmen Sink  
Sheryl Morris

COMMUNITY HEALTH FUND  
Tammy & David Gump  
Heidi Terrill

CELEBRATE WOMEN/ GIRLS NIGHT OUT

Community Health & Wellness  
Partners of Logan County  
Hilliker YMCA  
Liberty National Bank  
Logan Acres  
Shine FM  
The Ohio State University Medical Center  
The Photo Booth

DR. HARRY GRABER MEDICAL CAREER EMPLOYMENT FUND

Tom & Tammy Allison  
Dr. Roger Amigo  
Jayne Davis  
Rob & Mandy Goble  
Dr. Harry & Kathleen Graber  
Jessica Stark-Neill  
Winfred Stoltzfus  
Pam Taylor

DWIGHT SPENCER MEMORIAL SCHOLARSHIP FUND

Bonnie Allen  
Tom & Tammy Allison  
Dr. Roger Amigo  
Tara & Rod Bair  
Vickie Crumley  
Jayne Davis  
Rob & Mandy Goble  
Stephanie Mosbarger  
Peggy Patrick  
James Schwind  
Linda Schwind  
Jessica Stark-Neill  
Winfred Stoltzfus  
Pamela Taylor  
Kelli Zimmerman

EMPLOYEE ASSISTANCE FUND

Tom & Tammy Allison  
Sharon Bayliss  
Tammy Butler  
Jayne Davis  
Tom Denbow  
Rob & Mandy Goble  
Tammy & David Gump  
Brenda Jennings  
Julie Klopfenstein  
Nancy Leonard  
Barri Manning  
Karen Mox  
Lisa Nichols  
Vicki Rapp  
Anita Salyer  
Stephani Stallard  
Jessica Stark-Neill  
Winfred Stoltzfus  
Pamela Taylor  
Trisha Wyatt  
Kelli Zimmerman

EWING H. CRAWFIS MEMORIAL EMPLOYEE SCHOLARSHIP FUND

Bonnie Allen  
Tom & Tammy Allison

Continued on next page



Sharon Bayliss  
Vickie Crumley  
Jayne Davis  
Rob & Mandy Goble  
Tammy & David Gump  
Nancy Leonard  
Stephani Stallard  
Jessica Stark-Neill  
Winfred Stoltzfus  
Pam Taylor

*In Memory of James Dailey*  
Sue Crawfis

*In Memory of Bess Montgomery*  
Jim & Linda Hilliker  
Rob & Diana MacDonald

**GENERAL SCHOLARSHIP FUND**  
Tammy & David Gump

**JON WEEKS MEMORIAL MEDICAL ASSISTANCE FUND**

North Main Car Wash, LLC  
Tom & Tammy Allison  
Anonymous  
Tonya Ashcraft  
Aspire Benefits, LLC  
Bruce & Lisa Bachmann  
Belle Printing  
Belletech Corporation  
Shawn & Anne Bogenrief  
Bow Wow Meow Pet Sitting  
Citizens Federal Savings and Loan

Dairy Queen  
David Dailey State Farm Insurance  
Randy & Patricia Diener  
Duff Quarry, Inc.  
Eichholtz, Daring & Sanford Funeral Homes

Hi Point Lanes, LLC  
Jim Hilliker  
Honda of Marysville  
Richard & Barbara Horn  
Houchin Auto & Truck  
Liberty Golf, Inc.  
Mary Rutan Hospital  
Nick Munday  
Music Center USA  
Ohio Ready Mix  
Dava Royer  
Spherion of Lima, Inc.  
Brian Stevenson  
Thomas & Marker Construction  
Venture Automation, Ltd.  
James & Cynthia Weeks  
Richard & Jane Weeks  
Joyce Zilles  
Zimmerman Realty, Ltd.

**MARILYN A. CARNES NURSING SCHOLARSHIP FUND**

*In Memory of Marilyn Carnes*  
Tom & Tammy Allison  
Joe & Marianne Antram  
Amy Armentrout  
Janice Atterholt  
Barb Bowers  
Carole Barrett  
Kress & Donna Barton  
Warren & Diana Baughman  
Jacqualin Baughman  
J.R. & Terri Bell

Viola Bishop  
Ron Black  
William & Carol Buchenroth  
Susan Butler  
Shelly Chambers  
City of Bellefontaine  
Lisa Conley  
Gary & Karen Contner  
Donald & Alice Cordrey  
Beverly Cramblett  
Marcia Davis  
Deb Downey  
Kelley Dyer  
Cheryl Eagy  
Pat & Deborah Ellis  
Noma & Thomas Fidago  
Pam & Larry Flora  
Fraternal Order of Police #60 Hi Point Lodge

John Galyk  
Rob & Mandy Goble  
Tammy & David Gump  
Dick & Nancy Harmon  
Matt & Krista Henry  
Lisa Hershberger  
Todd & Dana Heydinger  
Fred & Karen Hoffman  
Suzan Hooper  
Houchin Family  
Wayne & Ann Jerviss  
Jodie Jones  
Charles & Kimberly Kellenberger  
Brian & Billie Jo Kennedy  
Michelle & Don Klingler  
Greg & Linda Knight  
Larry & Jeanette Lambert  
Belva Lantz  
Lori Lehman  
Carmen & Scott LeVan  
James & Lisa Lewis  
Steve & Martha Marshall  
Mary Rutan Hospital Environmental Services  
Dannie & Amanda McAleer  
Dr. Erin McIntosh  
Mike & Nancy McGinnis  
Frederick & Kimberly Meek  
Shirley Mifsud  
Sheryl Morris  
Michael & Rebecca Nessler  
Glenn & Linnett Newland  
Northwest Therapy Services  
Mark Organ & Penny Mills  
Patricia & Dick Ortl  
Chuck & Linda Overly  
Jo Palmer  
Mary Parish  
Billy & Senora Parson  
Susan Pasco  
Abby Pence  
Jim & Judy Poss  
Cindy Pulfer  
Ronald & Merry Lu Pusey  
Tom & Vicki Rapp  
Nancy Reames  
Jayne Riggs  
Kathy & Steve Robinson  
Rick & Becky Robison  
Tara Rohr  
Doreen Rose & Joe Smedley  
Jim & Linda Schwind  
Rebecca Simmons

Philip & Bonnie Sponsler  
Fred & Vicki Thomas  
Sharon Thompson  
Howard & Sharon Traul  
Dr. Matt & Ellen Verbsky  
Pam Wagner  
Woodrow & Kimberly Wall  
Tony & Gina Waltzer  
Ramona Warner  
Kenneth Whisman  
Chris White  
Lisa Yoder  
Dr. Janet Zurovchak & Dr. Steven Grothaus

**MEDICATION ASSISTANCE FUND**

Tom & Tammy Allison  
Robert C. Anderson, MD  
Sharon Bayliss  
Jayne Davis  
Tom Denbow  
Rob & Mandy Goble  
Robin Goff  
Tammy & David Gump  
Linda Hoover  
Nancy Leonard  
Stephanie Mosbarger  
Angie Rutan, CNP  
Anita Salyer  
Cynthia Smedley  
Stephani Stallard  
Jessica Stark-Neill  
Winfred Stoltzfus  
Pamela Taylor  
United Way of Logan County  
Trisha Wyatt  
Kelli Zimmerly

**RITA RIEDMILLER MEMORIAL SCHOLARSHIP FUND**

*In Memory of Rita Riedmiller*  
Beatrice Riedmiller  
Richard Jay Roberts

**GENERAL UNRESTRICTED FUND**

Dr. Thomas & Christine Darrah  
Pat & Deborah Ellis



Michael & Deanna Reames  
Howard & Sharon Traul

*In Memory of Jim Carman*

The James B. Carman Family  
Marjorie Hittepole  
Dale & Velda Knief  
Vince & Karla Militello  
Virginia Myers  
Tom & Vicki Rapp  
Janet Spain and Family  
John & Joyce Thoma  
Peg Wohlgamuth

*In Memory of Alice Hughes*

Alberta Lambert  
Cliff Lambert  
Eldon C. Lambert

*In Memory of Larry Jolliff*

Roger & Robin Goff  
Grace Lytle

*In Memory of Robert "Moose" VanderRoest*

Jim & Linda Hilliker  
Rob & Diana MacDonald



## WITH SINCERE GRATITUDE

### Logan County Cancer Society, Inc.

The Logan County Cancer Society (LCCS) assists Logan County residents who have cancer or cancer-related illnesses and promotes education in cancer detection and treatment.

In 2017, the LCCS assisted nearly 240 individuals with the cost of medication, supplies, wigs, prostheses, transportation and emergency support, totaling more than \$165,000. This assistance would not be possible without the generous support of our many contributors and volunteers. We thank the following for their generosity:

### 2017 Logan County Cancer Donations

Tom & Tammy Allison  
William Armstrong  
Christie Barns  
Bellefontaine City Schools Employees  
Bellefontaine Intermediate School  
Chris Cartwright  
Vickie Crumley  
Jayne Davis  
Stephanie Dysert  
Janine Francis  
Dennis Fry  
David Gettys & Laurie Rigsby  
Amy Gilbert  
Hi Point Lanes, LLC  
Roxanne Hillard  
Rob & Mandy Goble  
Kelitha Hogue  
Linda Hoover  
Julie Klopfenstein  
Ladies Golf Assoc. Tee Off For A Cure  
Earl Luthman  
Barri Manning  
Stephanie Mosbarger  
Pink Soldiers  
Quest Federal Credit Union  
Richwood Bank  
Mark Schwieterman  
Steve & Kay Spath  
Stephani Stallard  
Jessica Stark-Neill  
Riverside High School Cheerleaders  
Steve Austin's Auto Group, Inc.  
Winfred Stoltzfus  
Bernice Stuck  
Pam Taylor  
Lance & Rebekah Troyer  
United Way of Logan County  
Christopher Winder  
Marilyn Wortman  
Trisha Wyatt  
Joyce Ann Zilles

*In Honor of Mark Ward*  
Chris & Alison Adams

*In Memory of Phil Black*  
Priscilla Moffitt

*In Memory of Keith Brautigam*  
Cindy Gildow  
Philip & Sheryl Godwin  
Jim & Donna Gross  
Donna Heminger  
James Nichols  
Dave & Janelle Shoffner & Family  
Robert & Karen Templeton

*In Memory of Mike Brown*  
Judith Risner-Gardner

*In Memory of Shirley Cloyd*  
Ronna Cloyd-Adams & Charles Adams  
Tom & Amy Friedl  
Bruce & Janice Larkin

*In Memory of Rodney Cook*  
C. A. Bray  
James & Jennifer Logan

*In Memory of Dr. John P. (Jack) Craig*  
Richard M. Craig

*In Memory of Margel Day*  
Grace Chapel  
John & Sandra Detwiler  
Jim & Jill Hoffman  
David & Becky Pennington  
Priscilla Moffitt  
Anna Thomas

*In Memory of Jane Guy*  
Judith Risner

*In Memory of Mike Harrod*  
Susan & Ray Brackney  
Ron & Peggy Eastman  
Ray Higginbotham  
Terry & Lucy Higginbotham  
Vern & Mary Ann Higginbotham  
Patrick & Patty Kratowicz  
Kevin & Susan Maddy  
Mary Rutan Hospital Lab Staff  
Sharon Morris  
Vicki Rapp  
Todd & Penny Ward  
Lisa Yoder

*In Memory of Leo Heminger*  
Leroy & Elinor Dowden  
Donna Mae Heminger  
Mrs. Sam (Mary) Yoder  
Phyllis Young

*In Memory of Gaylor Hooley*  
Priscilla Moffitt

*In Memory of Gary Hogue*  
Charles & Ruth Lamb

*In Memory of Adrian Huber*  
Judith Risner-Gardner

*In Memory of Shirley Kerr*  
Paul & Wilda Baughman  
Bill & Bonita Fraim  
John & Carol Kerr  
Betsa Marsh  
Warren & Cathy Palmer  
Mike & Maura Schleper  
Chuck & Vickie Strayer  
Doris E. Ward Prater & Deanna Y. Ward

*In Memory of Blanche Leininger*  
Patricia Allen  
Joe & Barbara Cramer  
Cynthia Lehman  
Michael & Jodie McLaughlin

*In Memory of Charles Lyons*  
Judith Risner-Gardner

*In Memory of Joyce McCafferty*  
Rebecca Simmons

*In Memory of Virginia K. McPherson*  
Larry & Phyllis Jerviss

*In Memory of Bessie Montgomery*  
Sue Crawfis

*In Memory of Delilah Nance*  
Sherri Crowder

*In Memory of Harry Page*  
Patricia MacDonald

*In Memory of Naome Pierce*  
Suzy & Greg Tapp

*In Memory of Pam Quay*  
Pearl & Barb Schertzer

*In Memory of Russell Rowe*  
Mel & Evelyn Allison  
Thomas & Latasha Griffin  
Beverly King  
Shirley Kress  
Raymond & Deborah Martinelli  
Jim & Naomi Robinson  
Rowe Logistics, Inc. Staff  
Marvin & Kay Rowe  
Steve Rowe  
Mark & Teresa Ward  
Susan & Leonard Young

*In Memory of Stephen Schramm*  
Riverside of Class of 1964

*In Memory of Peg Shirk*  
Ron & Diane Aller  
Anesthesia Associates of Lima, Inc.  
Anonymous  
Patricia Beard  
Gail Clark & Kathy Dougherty  
Carol & Bill Davis

Tim Hart  
Cale & Andrea Jacobs  
Joan Kelly  
M. Jeanne Loy  
Harold & Barbara Marker  
William & Karen Montgomery  
Robert & Joy Moon  
Barbara Newland  
Neal Oakley  
Sally Robb  
Elizabeth Russo  
Jayne Smith  
Steve Smith  
Elizabeth Stripe

*In Memory of Carl Taylor*  
Doug & Kathy Pugh

*In Memory of K. Edward Wagner*  
Tara Bair

*In Memory of Karen Wagner*  
Jerry & Patty Wagner

*In Memory of Donna Walker*  
Priscilla Moffitt

*In Memory of Phyllis Weidner*  
Anonymous  
Debbie Daniels (Grulick)  
Linda & Ken Harm  
Doug & Jodie Miller  
Rod & Dee Tinsley  
Charlie Williams

*In Memory of Vera Worrell*  
Priscilla Moffitt

*In Memory of Everett Yoder*  
Priscilla Moffitt

*In Memory of Patty Yoder*  
Priscilla Moffitt

Each year numerous community members support special events held throughout our community in support of the Logan County Cancer Society. We are thankful for their many contributions, support and increased awareness that they bring to this service. Their involvement and support has allowed us to expand our services to further provide assistance to Logan County residents with a cancer diagnosis or cancer-related illness in their time of need. What a tremendous gift to give.

**If you or someone you know needs financial support because of cancer or a cancer-related illness, please call the Logan County Cancer Society at 937-599-7022.**



**Indian Lake Cancer Walk**

Bob & Karen Blackburn  
Bowden Motors  
Bud's Marine, Ltd.  
Choice Properties  
Roderick Clark  
Fox Run - Curt Mallory  
Golf Cart World & More, Ltd.  
Doug & Dana Henry  
Honda Transmission Manufacturing  
Denise & David Kipker  
Liberty National Bank  
Larry & Sandy McKirahan  
Mr. Concrete  
Mike's Roofing & Construction - Mike & Jennifer Kimbler  
Quest Federal Credit Union  
Julie Schrader  
Shoffstall Funeral Home, Inc.  
Spend-A-Day Marina  
T&A Enterprises - Todd Kinninger  
Wallace Custom Building, LLC

**Lights of Love**

Scott & Julie Abraham  
All Around Awards  
Melvin & Evelyn Allison  
Frank Aultman  
Tara & Rod Bair  
Janet Beelman  
Jonathan & Kimberly Belcher  
Bellefontaine Dental Mark  
James & Kimberlee Berton  
Charles & Cinda Blair  
Edwin Boy, DDS and Todd Heydinger, DDS  
Deborah Boyle  
Thomas & Melanie Bremer  
Tami Brown  
Todd & Sherry Bumgardner  
William & Vanessa Bumgardner  
Tony & Apryl Burtchin  
Sue Campbell  
Garon & Martha Carmean  
Brigitte Carnes  
Lorene Carpenter  
Marie Carpenter  
Amy & Christopher Cartwright  
Susan Chapman  
Janice Chivington  
Citizens Federal Savings & Loan  
Cynthia & Richard Clark  
Althea Clayton  
Rebecca Collins  
Kathy Comer  
Ronald & Connie Comer  
Community Health & Wellness Partners of Logan County  
Cheryl & David Comstock  
Mary Contner  
Valerie Cost  
Cindee Cox

Norma Coyer  
Ralph & Keely Coyer  
Karol & Robert Cummings  
Penny & Steve Cummings  
Greg & Jennifer Dement  
Kevin Dick  
Tom & Patty Diener  
Frank & Victoria Dinovo  
James & Janet Donnelly  
Bonnie Doss  
Howard & Joyce Downing  
Duff Quarry, Inc.  
Margie Dunlap  
Chuck & Choyce Earick  
Eichholtz, Daring & Sanford Funeral Homes  
Carmel & John Elliott  
Yvonne Elliott  
Charles & Cindy Estep  
Andrea & Jeffrey Fay  
Virginia Fergus  
Roxann Fischer  
Jennifer Fitzgerald  
Jean Forsythe  
Jeanne Forsythe  
Gary & Patricia Furrow  
John & Haley Gibson  
Donna & Paul Gillespie  
Tom Gillespie  
Global Organic Alliance, Inc.  
Rob & Mandy Goble  
Steve & Robin Godwin  
Jeffrey & Angelina Graham  
A Floral Design Studio  
Tammy & David Gump  
Ron & Judy Hadley  
Charles & Sharon Hanger  
Phyllis Hartzler  
Cassandra Hassel  
Anne Heinlen  
Marvin & Lois Helfenstine  
Amy Henry  
Robert & Nora Hertenstein  
Karen Hesson-Brady  
Todd & Dana Heydinger  
High Point Home Health Ltd.  
Dale & Sue Hirschfeld  
Collen Hogue  
Marvin Horton & Melissa Belt  
Judith Householder  
Thomas Householder  
Don & Angela Hubbard, Jr  
Andrew & Deborah Hughes  
Suzanne Hylton  
Myron Jacobs  
Jeff Horney Insurance Agency, LLC  
Linda Jennings  
Jeanne Jensen  
Garry Johns  
Susan Johns  
Betty Kauffman  
Joan Kelly  
Donald Kenoyer  
Linda Kerns

James & Shirley King  
Scarlett Kinney  
David & Nancy Knight  
Shirley Kress  
Dan & Diane Krupp  
Brad Kunze  
Michael & Jamie Lange  
Levans Tax Service, Inc.  
Liberty National Bank  
Logan View, LLC  
Robert Lovett Jr.  
Patricia Lyons  
Gordon MacDonald  
Debra Makemson  
Sandra Mastilak  
Gerry McBrien  
William McCormick  
Patty Mihoci  
Melissa Miller  
James & JoAnn Mitchell  
Judith Montgomery  
George & Barbara Nease  
Caroline Notestine  
Thomas & Adrienne O'Connor  
Angel & Jeremy Payne  
Norma Peloquin  
Jackie Penrod  
Cynthia Phelps  
Peggy Pittman  
Robert Pool  
Jerry & Mary Porter  
Peggy Poulin  
Douglas & Kathy Pugh  
Teri Ransbottom  
Tom & Vicki Rapp  
Melanie Rees  
Valerie Rhoades  
Rosalyn Rinehart  
Russell & Vicki Rowe  
Mary Jill Royer  
Warren & Norma Rumer  
Russell Hogue Benefit Fund  
Beth & Richard Savage  
Gloria Schrand  
Jennifer & Andrew Schreiner  
Bertha Schwaderer  
James & Brooke Senter  
Mary Ann Settlemire  
Nancy & Shannon Sheeley  
Chuck Shepherd  
Paul Shoe  
Shirley Short  
Carol Skeen  
Dottie Skidmore  
Timothy & Kathleen Skidmore  
Diane Smith  
Nikki Smith  
John & Teresa Stevens  
Barbara Stewart  
Julie Storm  
Pat Stringer  
Howard & Irene Terry  
Margaret Thackery  
Teri Thomas  
Gary & Peggy Thompson

Janet VanHoose  
Albert & Betty Wagner  
Carol Wappelhorst  
Louise Weber  
Dorothy West  
June & Wayne Wickerham  
Clinton Williams  
Patricia Wolfe  
Greg & Maureen Yoder  
Mary Yoder  
Kelli Zimmerly  
Zimmerman Realty  
Janet Zurovchak

**Doors of Encouragement**

Adecco  
Krista & Eric Adelsberger  
Alan Galvez Insurance  
Melvin & Evelyn Allison  
Taylor Allison  
Tom & Tammy Allison  
Ashley Furniture  
Bangs LLC  
Becky Barger  
Jeffrey & Brenda Bartlett  
Amy Bechtel  
Janet Beelman  
Bellefontaine City Schools  
Bellefontaine Dental Mark  
Bellefontaine Elementary  
Bellefontaine Kiwanis Action Club  
Bellefontaine Middle School  
Bellefontaine Soccer Association  
Bellefontaine Storage



Kelly Dukowitz  
Charles & Choyce Earick  
Eichholtz Daring & Sanford Funeral Home  
Thomas & Karen Fogle  
Dustin Gardner  
Rodney & Nancy Gillman  
Girls Youth Softball Association  
Green Hills Community  
Gretna Brethren Church  
Kimberly Hadley  
Amy Hall  
Connie & Scott Hall  
Rose & Dale Haning  
Heiby Oil Company Inc.  
Jordan Henry  
Hi Point Lanes  
Jill Hill  
Wanda Hoffman  
Bret & Jessi Holcomb  
Honda Transmission Manufacturing  
Kevin Hoover

Humble Construction  
Barbara Hunt  
Hurley Farms  
Indian Lake Middle School  
Jennings Farley & Seeley Funeral Home  
Susan Johns  
Bill & Kelly Johnson  
Karen Jordan  
Randy & Joy Kelly  
Brian & Billie Kennedy  
Gregory & Amy Kiefer  
Shirley Kiggins  
David & Nancy Knight  
Gregory Knight  
Lee Surveying & Mapping Co. Inc.  
Liberty National Bank  
Logan Co Cancer Arresters  
Logan County Co-Op Power & Light Assoc.  
Logan County Solid Waste District  
Todd & Courtney Lones  
Janet Lowery-Hutchinson  
Mad River Title Agency  
Vickie Maier  
Sandra Mastilak  
Thelma Matthews - Cracked Pot Studio  
Middleburg United Methodist Church  
Midwest Express Inc.  
Jim & Joy Miller  
Kathleen Neer  
NEX Transport Inc.  
Caroline Notestine  
Ohio Fitness & Martial Arts  
Debra Orr  
David & Becky Pennington - Affordable Frames Plus  
Tim Peterson

Chasidy Pond  
Quest Federal Credit Union  
Shannon Quine  
Jack & Heidi Reser  
Richwood Banking Company  
Robinson Investments  
Chad & Jamie Ross  
RTC Industries  
Gloria Schrand  
Jennifer & Andrew Schreiner  
Shoffstall Funeral Home Inc.  
Spend-A-Day Marina  
Stanford Construction  
Robert Stansbery  
Steve Austin's Auto Group  
Stolly Insurance Group  
Bernice Stuck  
Sweet Aromas Coffee  
The Mixing Bowl  
Thomas & Marker Construction  
Teri Thomas  
Thompson, Dunlap & Heydinger  
Cindy Titus  
Janet Lowery-Hutchinson  
Mad River Title Agency  
Vickie Maier  
Sandra Mastilak  
Thelma Matthews - Cracked Pot Studio  
Middleburg United Methodist Church  
Midwest Express Inc.  
Jim & Joy Miller  
Kathleen Neer  
NEX Transport Inc.  
Caroline Notestine  
Ohio Fitness & Martial Arts  
Debra Orr  
David & Becky Pennington - Affordable Frames Plus  
Tim Peterson



Vivian Binkley  
Buckeye Spirit  
Todd & Sherry Bumgardner  
William & Vanessa Bumgardner  
Calvary Chrisitan School PTSF  
Marie Carpenter  
Candace Caudill  
Amber Chivington  
Citizens Federal Savings & Loan  
Paul & Debra Claassen  
Tobi Collins  
Community Health & Wellness Partners of Logan County  
Community Storage & Properties, Ltd.  
Herb & Kaye Couchman  
Jim Cox  
Barbara Culp  
Wendy Davis  
Desperados LLC  
Downtown Business Partnership Inc.



# FULL-SERVICE URGENT CARE

9 A.M. TO 8 P.M.  
7 DAYS A WEEK



Mary Rutan Hospital Urgent Care offers one location for treatment, lab tests, X-rays and prescription fills. Our compassionate, fully licensed medical team has many years of expert training in both urgent care and primary care.



**Mary Rutan Hospital**  
**URGENT CARE**

We see patients of all ages, starting as young as one month, for non-life-threatening illnesses and injuries:

#### ILLNESSES

- Bronchitis, pneumonia & asthma
- Ear, throat, eye & sinus infections
- Colds, flu & other viral illness
- Nausea, vomiting & diarrhea
- Rashes & allergic reactions
- Migraine headache



#### INJURIES

- Burns & wounds
- Sprains & strains
- Bone fractures
- Lacerations & abrasions



#### SERVICES

- Sports physicals
- Lab, X-ray & pharmacy

*Ask about our self-pay and prompt pay discounts.*

*Simply walk in.  
No appointment necessary.*



▶ **CONVENIENTLY LOCATED AT THE INTERSECTION OF U.S. HIGHWAYS 68 N & 33**

**1134 N. Main Street • Bellefontaine 937-651-6820**