

Developmental screenings

Decoding billing for developmental screening in the first three years of life (DEV-CH)



What are developmental screenings?

Developmental screenings are administered during each well-child visit at 9, 18, and 30 months of age. The screenings are intended to track language, movement, thinking, behavior, and emotional development. Screenings must include scoring and documentation using a standardized screening tool that meets criteria set forth by the American Academy of Pediatrics (AAP) and the Centers for Medicare and Medicaid Services (CMS).

Why proper coding matters

- ✓ **Close gaps in care** by conducting and coding CPT code 96110 for the DEV-CH screenings during each well-child visit.
- ✓ **Get paid** for the DEV-CH screening in addition to the well-child visit when coded for both.
- ✓ **Improve HEDIS quality rates** by submitting the proper codes in claims.

Coding quick reference

Code	Definition	Code system
96110	Developmental testing with interpretation and report.	CPT

Claims where modifiers are added to indicate standardized screening for a specific domain, such as social emotional screening via the autism screening (ASQ-SE), will not qualify for this measure.

How we calculate performance:

Children in the SCFHP population who had a claim with **CPT code 96110**

All children in SCFHP population



SCFHP HEDIS
quality rate

Use any of the following AAP-recommended tools to meet DEV-CH requirements:

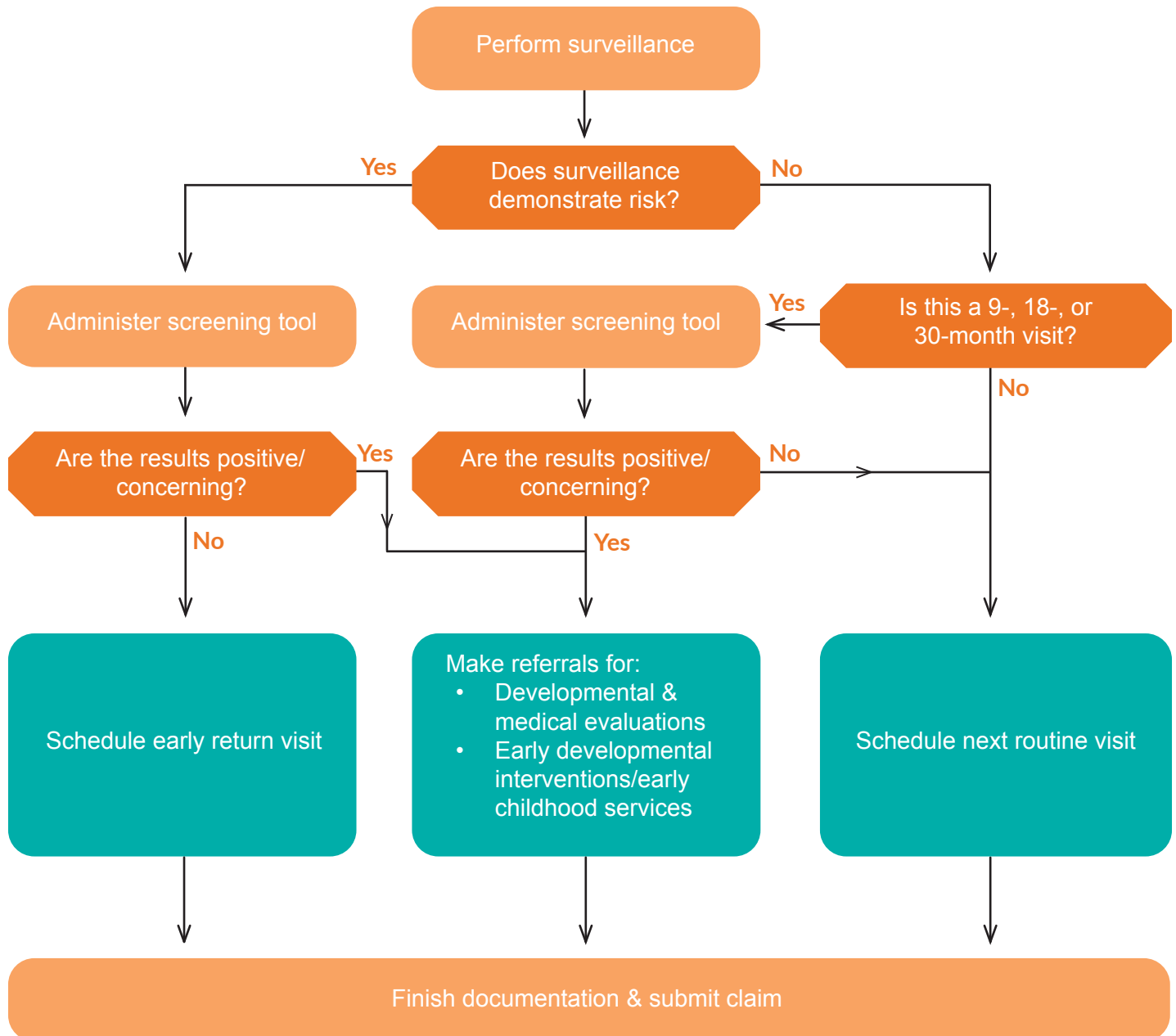
- Ages and stages questionnaire (ASQ) - 2 months to age 5
- Ages and stages questionnaire - 3rd edition (ASQ-3)
- Battelle developmental inventory screening tool (BDI-ST) - Birth to 95 months
- Bayley infant neuro-developmental screen (BINS) - 3 months to age 2
- Brigance screens-II - Birth to 90 months
- Child development inventory (CDI) - 18 months to age 6
- Infant development inventory - Birth to 18 months
- Parents' evaluation of developmental status (PEDS) - Birth to age 8
- Parents' evaluation of developmental status - Developmental milestones (PEDS-DM)

Additional guidance

AAP Bright Futures Pocket Guide: <http://bit.ly/AAP-BrightFutures>

40428

Below is a sample workflow indicating considerations for how developmental screening can be incorporated into a well-care visit.



Additional guidance

AAP Bright Futures Pocket Guide: <http://bit.ly/AAP-BrightFutures>