



## WHO'S IMPACTED?

Over **106,000** in Santa Clara County



**83,000** covered by SCFHP

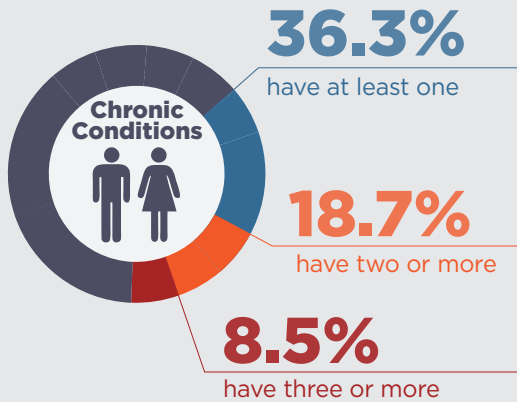
**MOST WERE UNINSURED PRIOR TO 2014**



Income between **100%** and **138%** of Federal Poverty Level (FPL)

For example, an adult in a family of four with an annual income between **\$24,300** and **\$33,534**

Many SCFHP Medi-Cal Expansion members require ongoing treatment:



### TOP 10 CHRONIC CONDITIONS #MEMBERS

TOP 10 CHRONIC CONDITIONS	#MEMBERS
Hypertension	14,079
High Cholesterol	10,658
Diabetes	8,580
Mental Health Conditions	4,278
Cardiovascular Disease	3,867
Chronic Liver Disease	3,293
Substance Use Disorder	2,867
Chronic Pain	2,713
Chronic Pulmonary Diseases	2,445
Cancer	1,442

## WHAT MIGHT REPEAL MEAN?

### CRITICAL HEALTH CARE AT RISK

- PREVENTIVE SERVICES
- PRESCRIPTION COVERAGE
- MENTAL HEALTH CARE
- SUBSTANCE ABUSE TREATMENT
- OUTPATIENT TREATMENT OF CHRONIC CONDITIONS



**An increase in expensive emergency visits** and preventable hospitalizations



**More severe end-stage complications**, such as amputation and dialysis



**Increases in homelessness, crime, and incarceration** due to unmanaged mental illness and substance abuse



**A disproportionate financial burden** on Santa Clara County safety net hospitals

### ECONOMIC IMPACT ON SANTA CLARA COUNTY

SCFHP pays **\$410 million** to providers each year for the care of Medi-Cal Expansion members, including:

- **\$221 million** to Hospitals & Facilities
- **\$89 million** to Physicians
- **\$62 million** to Pharmacies
- **\$38 million** to Other Providers