

Scoring Chart & Guidelines

Score Items (Z = 0, V = 5, X = 10, Concern = 5)  
Transfer the page totals and add them for the total score.  
Record the child's total score next to the cutoff.

TOTAL POINTS ON PAGE 1	30
TOTAL POINTS ON PAGE 2	40
TOTAL POINTS ON PAGE 3	25
TOTAL POINTS ON PAGE 4	30
TOTAL POINTS ON PAGE 5	0
<b>TOTAL POINTS</b>	<b>125.0</b>

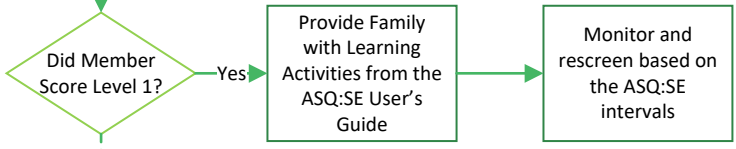
Questionnaire Interval	Monitoring Cutoff Score	Referral Cutoff Score	Child's ASQ:SE-2 Score
60 month	70.00	95.00	125.00

**ASQ:SE-2 SCORE INTERPRETATION AND RECOMMENDATION FOR FOLLOW-UP:** Review the approximate location of the child's total score on the scoring graphic. Then, check off the area for the score results below.

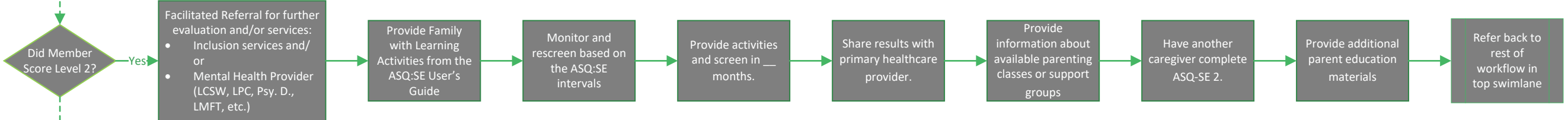


- The child's total score is in the  area. It is below the cutoff. Social-emotional development appears to be on schedule.
- The child's total score is in the  area. It is close to the cutoff. Review behaviors of concern and monitor.
- The child's total score is in the  area. It is above the cutoff. Further assessment with a professional may be needed.

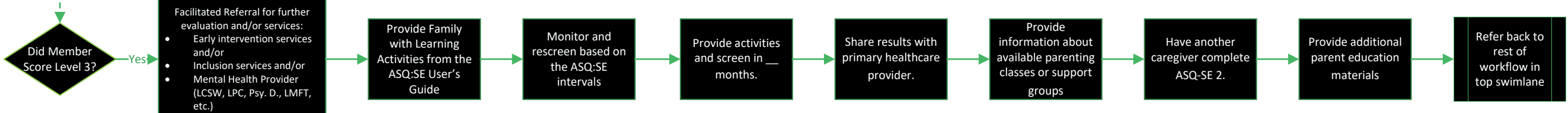
Score Level 1  
Indicates Typical Development



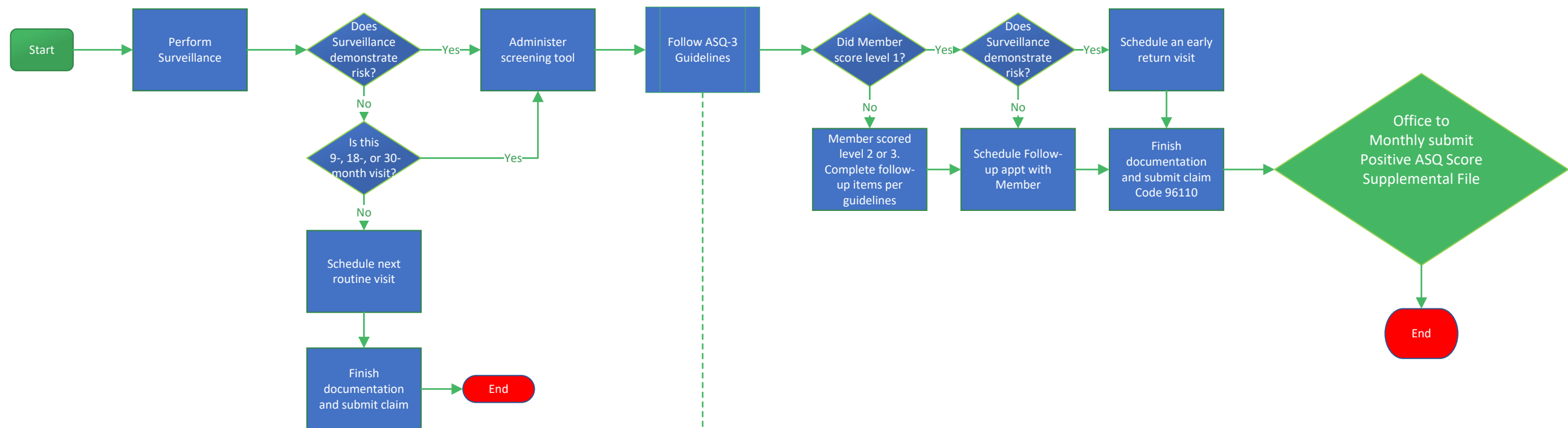
Score Level 2  
Indicates Need for Monitoring



Score Level 3  
Indicates Need for Further Evaluation



# ASQ-3 Developmental Workflow



Level 1: area,  
 Level 2: area,  
 Level 3: area.

## Scoring Example and Guidelines

**ASQ SCORE INTERPRETATION AND RECOMMENDATION FOR FOLLOW-UP:** You must consider total scores, overall responses, and other considerations, such as opportunities to practice skills, to determine appropriate follow-up.

If the child's total score is in the area, it is above the cutoff, and the child's development appears to be on schedule.

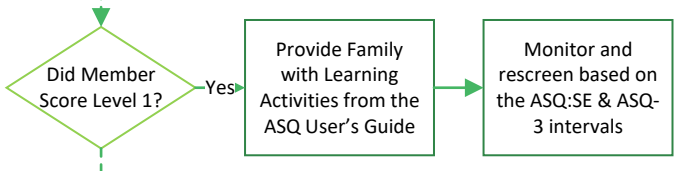
If the child's total score is in the area, it is close to the cutoff. Provide learning activities and monitor.

If the child's total score is in the area, it is below the cutoff. Further assessment with a professional may be needed.

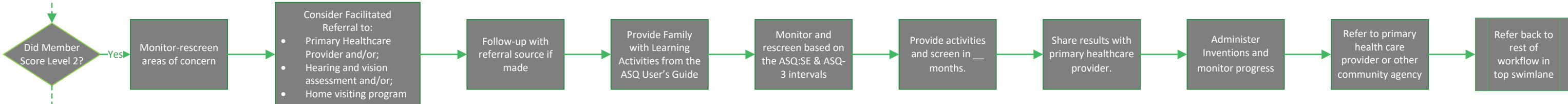
**SCORING RESULTS:**

Area	Cutoff	Total Score	0	5	10	15	20	25	30	35	40	45	50	55	60
Communication	27.93	45.00													
Gross Motor	30.68	40.00													
Fine Motor	35.39	25.00													
Problem Solving	16.71	30.00													
Personal-Social	32.53	30.00													

### Score Level 1 Indicates Typical Development



### Score Level 2 Indicates Need for Monitoring



### Score Level 3 Indicates Need for Further Evaluation

