

# Developmental screenings

Decoding billing for developmental screening in the first three years of life (DEV-CH)



## What are developmental screenings?

Developmental screenings are administered during each well-child visit at 9, 18, and 30 months of age. The screenings are intended to track language, movement, thinking, behavior, and emotional development. Screenings must include scoring and documentation using a standardized screening tool that meets criteria set forth by the American Academy of Pediatrics (AAP) and the Centers for Medicare and Medicaid Services (CMS).

## Why proper coding matters

- ✓ **Close gaps in care** by conducting and coding CPT code 96110 for the DEV-CH screenings during each well-child visit.
- ✓ **Get paid** for the DEV-CH screening in addition to the well-child visit when coded for both.
- ✓ **Improve SCFHP quality rates** by submitting the proper codes in claims.

## Coding quick reference

Code	Definition	Code system
96110	Developmental testing with interpretation and report.	CPT

Claims where modifiers are added to indicate standardized screening for a specific domain, such as social emotional screening via the autism screening (ASQ-SE), will not qualify for this measure.

## How we calculate performance:

Children in the SCFHP population who had a claim with **CPT code 96110**

All children in SCFHP population

=

**SCFHP**  
quality rate

## Use any of the following AAP-recommended tools to meet DEV-CH requirements:

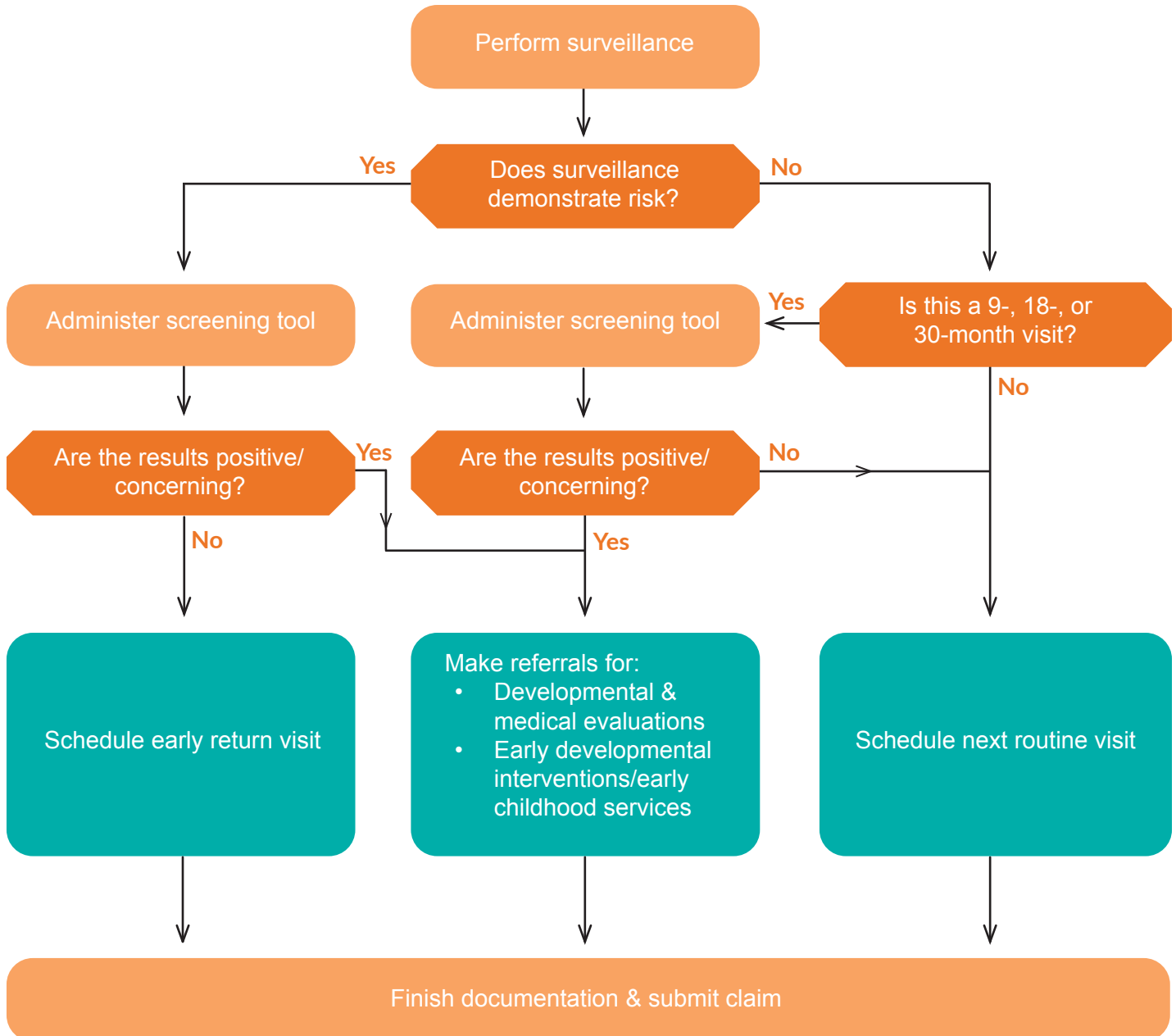
- Ages and stages questionnaire (ASQ) - 2 months to age 5
- Ages and stages questionnaire - 3rd edition (ASQ-3)
- Battelle developmental inventory screening tool (BDI-ST) - Birth to 95 months
- Bayley infant neuro-developmental screen (BINS) - 3 months to age 2
- Brigance screens-II - Birth to 90 months
- Child development inventory (CDI) - 18 months to age 6
- Infant development inventory - Birth to 18 months
- Parents' evaluation of developmental status (PEDS) - Birth to age 8
- Parents' evaluation of developmental status - Developmental milestones (PEDS-DM)

## Additional guidance

AAP Bright Futures Pocket Guide: <http://bit.ly/AAP-BrightFutures>

40428

Below is a sample workflow indicating considerations for how developmental screening can be incorporated into a well-care visit.



## Additional guidance

AAP Bright Futures Pocket Guide: <http://bit.ly/AAP-BrightFutures>