

NEWSBRIEF

Family Medicine Opens Morehead-North Location..... 3
 Medical Pavilion Construction Update..... 4

SCH Welcomes New Medical Staff6-7
 Camp Smile 10

PROUDLY INTRODUCING



St. Claire Regional Medical Center Proudly Introduces St. Claire HealthCare: More than just a Hospital, an Integrated Health System

St. Claire Regional Medical Center proudly launches St. Claire HealthCare and a new branding logo that incorporates all of its services and entities as one. “It’s time we recognize St. Claire Regional as more than a hospital,” says Mark J. Neff, SCH President/CEO. “And, what better way to brand St. Claire HealthCare than with a new logo. St. Claire Regional Medical Center will always be the core of St. Claire HealthCare, but we are so much more as we have grown to become an integrated healthcare system serving a population of over 160,000 people in 11 counties.”

“St. Claire HealthCare’s new logo represents integrated pieces that symbolize the advanced medicine that St. Claire provides partnered with our community to bring the best in healthcare to our region with the Sisters of Notre Dame’s cross at our very center,” says Neff. “Our commitment to providing the best possible healthcare with quality and compassion has never wavered in over 54 years, and our future is brighter than ever with the soon opening of the new Medical Pavilion.”

“St. Claire did not have a logo for the first 8 to 10 years, and then we engaged a graphic designer to come up with several possibilities,” said Sr. Mary Joell Overman, Sisters of Notre Dame and second St. Claire Administrator. “At the time we chose a simple design that reflected the founding group depicted by the Christian symbol, the cross and also its immediate service area with an Appalachia touch.”

over

"Today, as St. Claire Regional has become so much more than just a medical center and has advanced to a new level of care I think it is the right time we moved to a logo that mirrors our advancement, breadth of services and locations. And, I believe our new logo has done just that."

-Sr. Mary Joell Overman
Sisters of Notre Dame and second St. Claire Administrator

St. Claire HealthCare, a not-for-profit health system sponsored by the Sisters of Notre Dame - Covington Province, is dedicated to living its mission "To Proclaim God's Goodness through a Healing Ministry to the People of Eastern Kentucky." St. Claire HealthCare employs over 1,200 staff members including more than 100 medical providers representing 32 medical specialties. It includes the largest rural hospital in Northeastern Kentucky, 7 family medicine locations located within 5 counties, 3 multi-specialty physician practices, homecare services and operates 3 retail services including family medical supply, pharmacy and aesthetics. For more information about St. Claire HealthCare and its services visit www.st-claire.org.

Additional New St. Claire Logo Updates



St. Claire Family Medicine is proud to announce the opening of a **new location** on the northside of Morehead, formerly HealthPlus!

Wendy Fletcher
DNP, APRN

Tyler Elam
DO

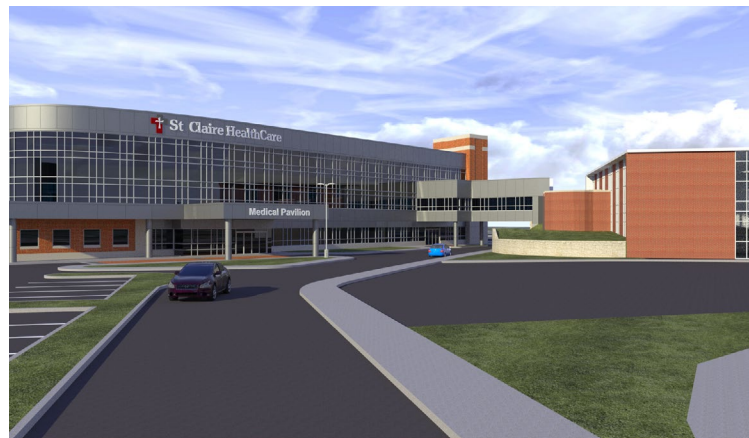
St. Claire Family Medicine
MOREHEAD - NORTH

255 Viking Dr. | Morehead, KY
(Located off KY 32 North, near Walmart)
Monday - Friday | 8 am - 5 pm
To schedule an appointment, call **606.784.2774**.

ST. CLAIRE MEDICAL PAVILION CONSTRUCTION UPDATE



Construction for St. Claire's new 81,000 square foot Medical Pavilion is still on track for completion by the end of this year and is expected to open early 2018. There are over 100 exam rooms in the design including cardiology, gastroenterology, surgery, internal medicine, neurology, orthopedics, pulmonology and urology. Also included is space for medical oncology, physical therapy, UK Women's Healthcare and radiology/ laboratory services.



ARCHITECT RENDERINGS



PROGRESS AS OF AUG. 31, 2017

ANNIVERSARY SALE

25% OFF YOUR ENTIRE PURCHASE!

NOW THRU SEPTEMBER 30
**Excludes wound care, HMR, supplements, and Skin Medica®.*

MOBILITY

CANES - WALKERS - ROLLATORS - POWERCHAIRS

ORTHOTIC INSOLES

Aetrex's amazing iStep technology is the industry's #1 foot scanning system, designed to deliver you maximum foot comfort and improved footwear in less than 30 seconds.

BIOFREEZE PAIN RELIEF

- Fast pain relief.
- Great for arthritis, neck and back pain, sore muscles and more.
- Apply Biofreeze right where it's needed and without any mess.

DR.'S REMEDY® ENRICHED NAIL CARE

Choose from more than 20 colors!

- Tea Tree Oil
- Garlic Bulb Extract
- Vitamin C & E
- Wheat Protein

WellnessMats®

- No-trip, ¾ beveled edge will never curl
- Anti-microbial, by design
- Puncture & heat resistant
- Easy to clean
- Stain & dirt resistant
- Safe & non-toxic (PVC-Free)

SCRUBS

LIFT CHAIRS

Sit, Recline, Lift or Stand All with the Touch of a Button!

More than 20 models available (many models in stock)

- 5 size options including XXL
- Over 40 fabric color options
- Heat and massage available
- Lifetime manufacturer warranty on Golden Technologies® lift mechanism
- Free delivery within a 50 mile radius

SHOES

Active • Everyday • Orthotic

Aetrex • Apex • Brooks • C&C Sweden
Reebok • Sanita • Softwalk

CUSTOMER APPRECIATION DAY

Join us for FREE grilled gourmet hot dogs and register to win more than \$2,500 in door prizes!

Friday, Sept. 22 • Noon - 5 PM

Including a power scooter, Brooks, C&C Sweden and Softwalk shoes, a screened canopy, zero gravity loungers, and much more!

www.st-claire.org | 606.784.2414
Located in the Morehead Kroger Shopping Center across from LOWE'S
Monday - Friday 8AM - 6PM | Saturday 10AM - 2 PM

No additional discounts, promotions or offers apply.

Like us on SCRfamilymedicalsupply

St. Claire HealthCare Welcomes New Medical Staff



Joshua "Cory" Bailey, MD
PAIN MANAGEMENT - MMS

Started:
August 2017
COM and Internship:
University of Louisville - Louisville, KY
Residency and Fellowship:
Mayo Clinic - Jacksonville, FL



Ashley E. Brown, MD
EMERGENCY MEDICINE

Started:
August 2017
COM:
University of Kentucky College of Medicine
RPLP - Morehead, KY
Residency:
University of Kentucky Emergency Medicine -
Lexington, KY



Marie Dennison, MD
FAMILY MEDICINE
MOREHEAD DOWNTOWN

Started:
August 2017
COM:
University of Louisville - Louisville, KY
Residency:
University of Kentucky, Rural Track -
Morehead, KY



Tyler Elam, DO
FAMILY MEDICINE
MOREHEAD-NORTH

Started:
August 2017
COM:
University of Pikeville College of Osteopathic
Medicine - Pikeville, KY
Residency:
East Tennessee State University Quillen
College of Medicine - Bristol, TN



Mohamed Elshayeb, MD
NEPHROLOGY

Started:
September 2017
COM:
Ain Shams University Teaching Hospitals -
Cairo, Egypt
Residency:
St. Joseph Mercy Hospital - Ann Arbor, MI
Fellowship:
University of Michigan Hospital -
Ann Arbor, MI



Lesley Jackson, MD
FAMILY MEDICINE
MOREHEAD-DOWNTOWN

Started:
September 2017
COM and Internship:
University of Kentucky College of Medicine
RPLP - Morehead, KY
Residency:
Self Regional Family Medicine Residency -
Greenwood, SC



Shea Lambirth, MD
IM/HOSPITALIST

Started:
September 2017
COM:
University of Kentucky College of Medicine
RPLP - Morehead, KY
Residency:
University of Vermont Medical Center -
Burlington, VT



Kristen Murphy, DO
FAMILY MEDICINE
OWINGSVILLE

Started:
August 2017
COM:
University of Pikeville College of Osteopathic
Medicine - Pikeville, KY
Residency:
St. Claire Regional Medical Center



Logan "William" Murphy, DO
FAMILY MEDICINE
FRENCHBURG

Started:
August 2017
COM:
University of Pikeville College of Osteopathic
Medicine - Pikeville, KY
Residency:
St. Claire Regional Medical Center



**Oliver "Thomas"
Newcomb, IV, MD**
UROLOGY, CRSS

Started:
August 2017
COM:
University of Louisville School of Medicine
Trover Rural Track - Louisville, KY
Residency:
University of Louisville - Louisville, KY



Wendy Fletcher, DNP, APRN
FAMILY MEDICINE
MOREHEAD-NORTH

Started:
September 2017
COM:
University of Kentucky - Lexington, KY
Texas Christian University - Fort Worth, TX



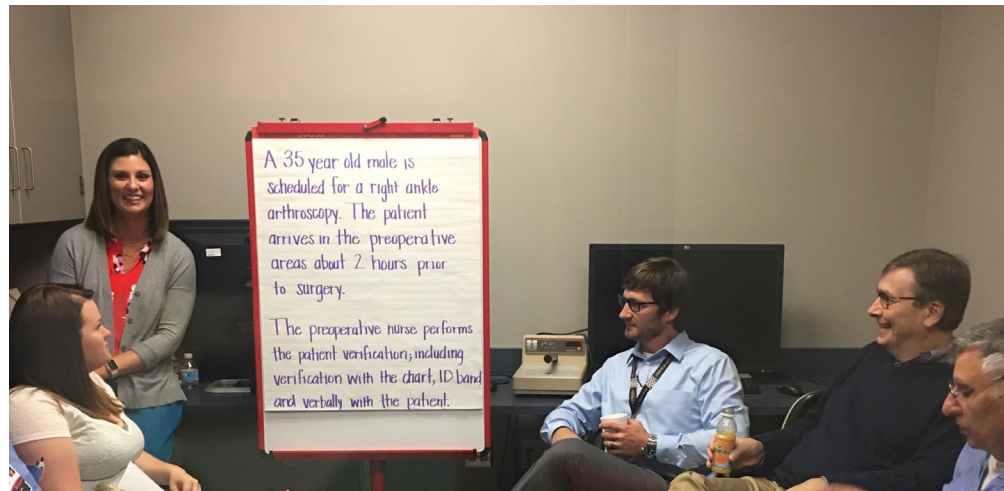
*"To proclaim God's goodness
through a healing ministry to
the people of Eastern Kentucky."*

- The St. Claire HealthCare Mission -



SCR's Surgical Services Staff completed Crew Resource Management training on August 7.

The use of crew resource management as taught by the Teamsteps program in the form of team training has been shown to improve outcomes in operating rooms. Evidence shows that operating room teams who undergo team training in crew resource management have better outcomes and safer units.



St. Claire Regional Welcomes New Staff

- | | | | |
|---|---|---|---|
| Judith S. Adams
Pharmacy | Ashleigh M Davis
Nursing Administration | Brittany H Ingles
Diagnostic Imaging | Felicia P Porter
TCU |
| Kacie N Antrobus
4th Floor Nursing | Kaylee L Davis
3rd Floor Central | Nicholas T Johnson
Float Dept.-Unit Secretary | Janessa A Ritchie
Cardiology |
| Joshua C Bailey
Pain Management | Marie A Dennison
FM- Morehead | Rachel E Johnson
Central Billing Office | Loretta L Ruse
Neurology |
| Veva G Bentley
FM- Owingsville | Jessica C Doyle
FM- Morehead | Sabrina D Johnston
Environmental Services | Christopher C Shields
Physical Therapy |
| Mary C Bishop
Family Medical Supply | Tyler J Elam
Family Medicine | Jasmine B Jones
Enviornmental Services | Shena L Skaggs
Internal Medicine |
| Brittany A Blair
Oncology | Wynetta J Fletcher
FM- Morehead North | Tonya M Justice
Laboratory | Annie C Spegal
Specialty Practices Administration |
| Shannon R Boggs
Pharmacy | Samuel A Gross
Emergency Department | Derrick N Kiser
Home Health | Regina A Vance
TCU |
| Cindy L Brown
Environmental Services | Regina R Hall
Nursing Administration | Gretchen J Lister
Central Billing Office | Glenn D Vanous
Infusion Services |
| Jessica N Buckler
4th Floor Nursing | Ashley R Helton
4th Floor Nursing | Nicolle J Manning
FM- Morehead North | Kelly E Ward
Speech Therapy |
| Victoria H Carroll
Diagnostic Imaging | Kara D Holbrook
4th Floor Nursing | Madison B McCoy
Environmental Services | Stacy E Wells
4th Floor Nursing |
| Krista L Clark
Central Billing Office | Terra L Hull
Specialty Practices Administration | Bobby L Meade
Infusion Solutions | Brittany L Wilson
Pain Management |
| Morgan N Clemons
3rd Floor North | Nathan D Hunt
Food Services | Oliver T Newcomb IV
Urologist | Keisha L Wright
Pain Management |



TCU had a successful Annual State Survey ending 8/17/17 with no deficiencies! Great Job TCU!



CAMP FOR CHILDREN
Who have Lost a Loved One

Camp SMILE (Sharing Memories in a Loving Environment) is a collaborative effort between St. Claire Regional Hospice and the Morehead State University Department of Nursing.

Camp Smile is offered to Children 7-17 years old who have suffered the loss of a loved one. The camp will be hosted from October 20-22, 2017 at Camp Lyons in Bath County. The campers will spend the weekend with bereavement counselors and they will be offering a variety of participatory activities to guide the children through understanding feelings of grief and loss. Campers will have access to archery, hiking, crafts and a free T-shirt.

Space is limited; applications will be screened to ensure target level of provided intervention. Camp Smile is available at no cost and is offered as a free community service! We receive no reimbursement; therefore, we depend on cash and in-kind donations.

To register visit www.st-claire.org/campSMILE or for more information contact Melanie Hurst, MSW, 606.783.6808 or mahurst@st-claire.org

Sharing Memories In a Loving Environment



UPCOMING EVENTS

C.E. Programs

Sept. 1 | Tumor Board

8-9 AM, SCR Teleconference Room
Credit: ACPE, Category 1 AMA, Nursing

Sept. 6 | Journal Club

Noon – 1 PM
SCR Library - Education Room
Credit: ACPE, Category 1 AMA

Sept.12 | BLS Check Off

1-4 PM
CHER 208
Register with KaSandra Hensley at kasandra.hensley@st-claire.org or ext. 6830.

Sept. 13 | Morbidity & Mortality

Noon – 1 PM
SCR Library - Education Room
Credit: ACPE, Category 1 AMA

Sept. 15 | Tumor Board

8-9 AM
SCR Teleconference Room
Credit: ACPE, Category 1 AMA, Nursing

Sept. 20 | Interdisciplinary Grand Rounds

Noon – 1 PM
SCR Library - Education Room
Credit: ACPE, Category 1 AMA

Sept. 22 | Lung Cancer and Smoking Cessation Symposium

9 AM – 2:40 PM
CHER 102
Credit: Category 1 AMA, Nursing
Pending Credit: CHES, RT, PT

Sept. 23 | Fall Pharmacy Forum

8 AM – 2:10 PM
SCR Library - Education Room
Credit: ACPE, Category 1 AMA

Nursing Professional Development Educational Offerings

To register, go to CareLearning: <http://intranet:9000/>

Sept. 5 | PALS Renewal

Registration: 8 AM, Class 8:30 AM – 4:30 PM
Sim Lab

Sept. 8 | BLS Skills Check-Off

8 AM – Noon (30 min. sessions)
Café A

Sept. 19 | BLS Skills Check-Off

8 AM – Noon (30 min. sessions)
Café A

Sept. 19 | Palliative Stroke Care Case Scenario

Noon - 1 PM
Sim Lab

Sept.20 | Orthopedic Nursing Care Class

10-11 AM
Sim Lab

Sept. 20 | Wound Care Pt. II

8-10 AM
Café D

Sept. 20 & 27 | Basic Dysrhythmia Two-Day Course

8:30 – 11 AM
Café D

Sept. 28 | Secure Recertification Training

8 AM – Noon
Café Rooms BCD

Sept. 28 & 29 | ACLS Full Two-Day Course

Registration: 8 AM, Class 8:30 AM – 4:30 PM
Sim Lab



Don't miss your chance
to participate in
St. Claire Foundation's
Golf Ball Drop Raffle
Thursday, Sept. 14!

Chances are \$10 each.
You don't have to be present to win.

Purchase chances online at www.st-claire.org/golfballdrop,
or by contacting the Foundation at 783-6512.
Your number(s) will be emailed to you. Be sure to save that email.

Proceeds from the raffle will go toward the new St. Claire Regional Medical Pavilion.
Golf Ball Drop Raffle chances are nonrefundable.

St. Claire Medical Center, Inc. – Charitable Gaming Exempt Organization #EXE0002007

 **St. Claire
HealthCare**
222 Medical Circle | Morehead, KY 40351

INTRODUCING
the new waterproof
GHOST 10 GTX
➔ **BROOKS**



25% OFF During our
Anniversary Sale!
See page 5 for details.

 **St. Claire
FAMILY
MEDICAL** ➔ **SUPPLY**

www.st-claire.org | 606.784.2414

Located in the Morehead Kroger Shopping Center across from LOWE'S
Monday - Friday 8AM - 6PM | Saturday 10AM - 2 PM

*No additional discounts, promotions or offers apply.

St. Claire HealthCare
NEWSBRIEF

**Have an article or event
to submit for the Newsbrief?**

Please send articles/information to be placed in the SCH
Newsbrief to SCRcommunications@st-claire.org.

View current and past Newsbriefs online!
www.st-claire.org/Newsbrief

Need a camera for an SCR Event?

The Marketing/PR Dept. has several
cameras available for loan.
Call ext. 6927 for more information.



Connect With Us!
SCRmedical



St. Claire HealthCare is a
sponsored ministry of the
Sisters of Notre Dame
Covington Province

