

# NEWSBRIEF

Congressman Rogers Recognizes Commitment to Rural Healthcare ..... 2  
 2017-2018 Medical Staff Officers ..... 3

Aesthetics Fall Sale ..... 4  
 Family Medical Supply Go Pink Event ..... 5

## Sr. Marla Monahan appointed St. Claire HealthCare Board Chair

Sr. Marla Monahan was recently appointed Board Chair for St. Claire HealthCare by Sr. Mary Ethel Parrott, Provincial for the Sisters of Notre Dame of Covington. Sr. Monahan has served on St. Claire HealthCare's Board for the past 12 years. This marks her second time being appointed Board Chair.



*"I am honored to be selected as Board Chair for St. Claire HealthCare. As a Sister of Notre Dame we value our mission and ministry with St. Claire because the heart of St. Claire's mission is to heal and proclaim God's goodness. Truly, a healing ministry is what St. Claire is all about, it's amazing medicine, close to home."*

*Sr. Marla Monahan, SND*

"Sr. Marla has a long association and valuable experience with St. Claire," says Sr. Parrott. "The Sisters of Notre Dame are focusing on our partnerships, and Sr. Marla's ability to relate to a variety of entities and personalities is remarkable. She has a great love for St. Claire and respect for the people there. She certainly feels very connected to St. Claire."

Robert G. Stevens will continue on the Board for the coming year as Past Chair. Stevens was originally appointed Board Chair in 2011, and became St. Claire Healthcare's first non-Sister of Notre Dame Board Chair.



Photo courtesy of Morehead State University

## Congressman Rogers Recognizes Commitment to Rural Healthcare

U.S. Representative Harold "Hal" Rogers (KY-05) and staff joined Mark J. Neff, St. Claire Healthcare President/CEO, and Dr. Jay Morgan, Morehead State University President, for a reception to honor the commitment of St. Claire HealthCare and Morehead State to rural healthcare.

"Throughout my career, I have worked to increase access to healthcare services, reduce the number of uninsured individuals and families and improve the overall health of people in southern and eastern Kentucky," said U.S. Representative Harold "Hal" Rogers (R-KY-05).



Photo courtesy of Morehead State University

Congressman Rogers is pictured (top) with Mark J. Neff, St. Claire HealthCare President/CEO; (bottom left) Dr. William Melahn, Chief Medical Officer/VP Medical Affairs; (bottom right) Linda Fultz, VP Quality & Resource Management.



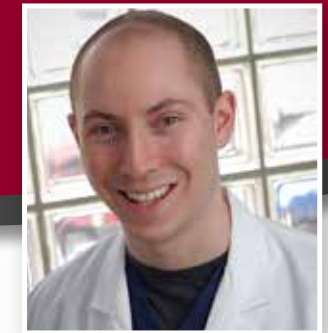
## 2017-2018 MEDICAL STAFF OFFICERS



**President & Chief of Staff**  
Mansha U. Kahloon, MD  
2016-2018



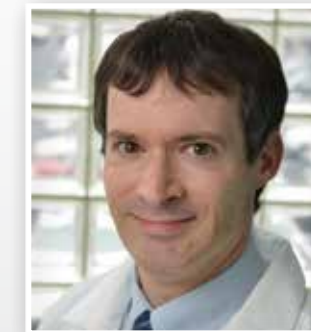
**Immediate Past President**  
William D. Lewis, MD



**Secretary-Treasurer**  
William Brandon Pace, MD



**Member-at-Large**  
Craig H. Burrows, MD



**Department of Medicine Chair**  
Stephen D. Damron, MD



**Department of Medicine Vice Chair**  
Amanda L. Ramey, DO



**Department of Surgery Chair**  
Corey B. Forester, MD



**Department of Surgery Vice Chair**  
Thadis C. Cox, MD

# Fall in Love with your SKIN again

Now thru Oct. 20



**BOTOX**<sup>®</sup>  
Cosmetic  
onabotulinumtoxinA injection

**Purchase 40 Units Get 10 FREE**

Plus receive 200 [x] pts  
Noticeable results within 24-48 hours!

**Juvéderm**<sup>®</sup>

Juvéderm<sup>®</sup> • Juvéderm<sup>®</sup> Ultra  
Volbella<sup>®</sup> • Vollure

**\$50** Off

Plus receive 200 [x] pts  
Immediate results that last up to 1 year!

**SkinMedica**<sup>®</sup>  
An Allergan Company

#1 medically dispensed, prescription-strength skin care system that can actually transform your skin.



**TNS Essential Serum | \$199**

Plus receive 100 [x] pts  
All-in-one skin rejuvenating treatment improves appearance of fine lines, wrinkles, skin tone and texture.



**TNS Recovery Complex | \$129**

Plus receive 50 [x] pts  
Clinically shown to reduce the appearance of skin discoloration and improve appearance of fine lines and wrinkles.



**TNS Eye Repair | \$69**

Plus receive 25 [x] pts  
Reduces the appearance of fine lines, wrinkles and dark circles while improving smoothness and hydration around the eyes.



**HAS Rejuvenating Hydrator | \$125**

Plus receive 100 [x] pts  
Rejuvenating hydrator that provides immediate smoothing in the appearance of fine lines and wrinkles and supports the skin's natural ability to replenish its own hyaluronic acid.



**Lytera 2.0 | \$125**

Plus receive 75 [x] pts  
Diminishes even the most stubborn discoloration, regardless of skin type or genetic makeup.

**Juvéderm**  
VOLUMA<sup>®</sup> XC  
Buy 1, Get  
**\$150** Off  
your second

Plus receive up to 600 [x] pts  
Immediate results that last up to 1-2 years!

**Chemical Peels**

**50%** Off  
limit one

Plus receive 50 [x] pts  
Improvement after 1 peel, compelling results after 5-6 peels!

Purchase a **Complete Skin Rejuvenation** pkg.

Get a **FREE Laser Hair Removal** small pkg. of your choice

Stop by to take advantage of our fall sale, or call **606.783.6760** to schedule a **FREE skin consultation.**

No additional discounts, promotions or offers apply. 9/17

Like us on @SCRAesthetics

**WOMEN'S IMAGING & AESTHETICS**

St. Claire HealthCare

## St. Claire HealthCare Welcomes New Staff

**Arley Avery**  
3rd Floor Central

**Tina M Fyffe**  
FM- Sandy Hook

**Shea P Lambirth**  
Hospitalist Physician

**Chasity J Rucker**  
Environmental Services

**Ty E Benedict**  
Food Services

**Peggy J Guilds**  
3rd Floor North

**Christopher A Maggard**  
Family Medical Supply

**Jessica A Shackelford**  
3rd Floor Central

**Bradi L Boden**  
Physical Therapy

**Christopher G Hobbs**  
Infusion Solutions

**Lindsay R McCane**  
Marketing & PR

**Elizabeth R Simmons**  
Environmental Services

**Zoe N Boggs**  
Float Dept. Unit Secretary

**Lesley M Jackson**  
FM Morehead-Downtown

**Evangeline G Meadows**  
Patient Access

**Chase A Toy**  
Information Technology

**Emily K Bradley**  
Infusion Solutions

**Charlene D James**  
Float Dept. Unit Sec

**Khang G Nguyen**  
Pharmacy

**Tamara D Ward**  
Anesthesia Professionals

**Brittany L Brown**  
ICU

**Jacob T Johnson**  
Physical Therapy

**Don L Parker**  
Infusion Solutions

**Zachary S Wolfe**  
Security Services

**Ginger W Clark**  
Nursing Professional Deve.

**Jessica D Johnson**  
Patient Access

**Melissa L Pennington**  
Emergency Department

**Amy T Zimmerman**  
Central Billing Office

**Corina M Duncan**  
Food Services

**Carlie M Kelley**  
Float Dept- Unit Secretary

**Julie A Perry**  
Patient Financial Services

**Mohamed A Elshayeb**  
Nephrology

**Joseph R Lacy**  
Pharmacy

**Heather L Phelps**  
Laboratory



Nurse leaders from St. Claire HealthCare recently attended the 13th Annual KONL Leadership Development Conference - Navigating Climate Change: Future of Healthcare and Nursing in an Ever-Changing Environment. The conference was focused on ongoing changes in healthcare policies and trends, to prepare Kentucky Nurse Leaders with the skills and tools to lead effectively.



# OCTOBER 2017 EDUCATIONAL OPPORTUNITIES

## C.E. Programs

### Oct. 4 | Journal Club

Noon - 1 PM, SCR Library - Education Room  
Credit: ACPE, Category 1 AMA

### Oct. 6 | Tumor Board

8-9 AM, SCR Teleconference Room  
Credit: ACPE, Category 1 AMA, Nursing

### Oct. 10 | BLS Check Off

1 - 4 PM, CHER 208  
Register with KaSandra Hensley at  
kasandra.hensley@st-claire.org or ext. 6830.

### Oct. 11 | Morbidity & Mortality

Noon - 1 PM, SCR Library - Education Room  
Credit: ACPE, Category 1 AMA

### Oct. 13 | Kentucky Rural Behavioral Health Symposium

8:30 AM - 4 PM, CHER 102  
Credit: Category 1 AMA, Nursing  
Pending: Social Work

### Oct. 18 | Interdisciplinary Grand Rounds

Noon - 1 PM, SCR Library - Education Room  
Credit: ACPE, Category 1 AMA

### Oct. 20 | Tumor Board

8 - 9 AM, SCR Teleconference Room  
Credit: ACPE, Category 1 AMA, Nursing

## Nursing Professional Development Educational Offerings

To register, go to CareLearning: <http://intranet:9000/>

### Oct. 4 | ACLS Renewal

Registration: 8 AM, Class: 8:30 AM- 4:30 PM  
Sim Lab

### Oct. 13 | Caring for the Weight Loss Patient CE Course

10 AM - Noon or 2 - 4 PM, Café D

### Oct. 13 | BLS Skills Check Off

8 AM - Noon (30 min. sessions), Café A

### Oct. 16 & 23 | Basic Dysrhythmia Two- Day Course

8:30 - 11:30 AM, CHER 310

### Oct. 17 | BLS Skills Check-Off

8 AM - Noon (30 Min sessions), Café A

### Oct. 17 | CATS Lecture Series- Afib & Stroke (Anticoagulants)

Noon - 1 PM, Sim Lab

### Oct. 18 | Orthopedic Nursing Care Class

10 - 11 AM, Café D

### Oct. 25 | Wound VAC

9 - 11 AM, Café D

### Oct. 26 & 27 | PALS Full Two-Day Course

Registration: 8 AM, Class: 8:30 AM - 4:30 PM  
Sim Lab

# EARLY DETECTION LEADS TO SURVIVAL

# go pink

Women's Health Event

THURSDAY, OCTOBER 19 • 9 AM TO NOON  
ST. CLAIRE FAMILY MEDICAL SUPPLY



Featuring  
**20% OFF**  
Valid Thursday, Oct. 19 only.

Shoes (Active, Everyday & Orthotic)  
Compression · Mastectomy Supplies · Lift Chairs  
Biofreeze · Rollators · Canes · Scrubs  
Accessories · Dr.'s Remedy Nail Polish · And More!

\*Some exceptions may apply. See store for details.



The first 100 women  
will receive a

**FREE**  
"GO PINK" T-SHIRT!



### FREE HEALTH SCREENINGS

No Appointment Necessary & No Fasting Required

- Ankle Brachial Index
- Blood Pressure
- Bone Density
- Cholesterol
- Dermascan
- Glucose
- Oxygen Saturation
- Pulse Rate

### EDUCATION & RESOURCES

- St. Claire Breast Cancer Prevention Education
- St. Claire Oncology Services
- American Cancer Society Look Good Feel Better Program
- UK HealthCare Markey Cancer Center

ENJOY FREE REFRESHMENTS



[www.st-claire.org](http://www.st-claire.org) | 606.784.2414

Located in the Morehead Kroger Shopping Center across from LOWE'S  
Monday - Friday 8AM - 6PM | Saturday 10AM - 2 PM

No additional discounts, promotions or offers apply.



# Dillard's

## Fall Sale!

October 5-6  
Cafe B, C & D

Cash · Checks · Credit Card  
Payroll Deduction

A portion of all sales benefit St. Claire Foundation's special programs.  
For more information call, 606.783.6797.



### ST. CLAIRE HOSPICE 2ND ANNUAL *Thanksgiving Food Drive*

OCTOBER 2 – NOVEMBER 13

Help St. Claire Hospice patients and their families during the holiday season.

Donations of non-perishable food items like canned vegetables, canned fruits, boxed desserts, boxed potatoes, etc., can be dropped off at the Hospice Office (201 Lyons Ave., Morehead).

Contact Amber Stamper, LSW, volunteer coordinator/social worker, at 606.783.6887 or [amber.stamper@st-claire.org](mailto:amber.stamper@st-claire.org) for more information.



# FLU SHOT DEADLINE

for St. Claire HealthCare Staff & Volunteers

October 31, 2017

Questions or concerns? Contact Employee Health:  
Irene Williams, RN (ext. 6649) or Dena Davis, LPN (ext. 6941)

## NEWSBRIEF

### Have an article or event to submit for the Newsbrief?

Please send articles/information to be placed in the SCH Newsbrief to [SCRcommunications@st-claire.org](mailto:SCRcommunications@st-claire.org).

View current and past Newsbriefs online!  
[www.st-claire.org/Newsbrief](http://www.st-claire.org/Newsbrief)

### Need a camera for a St. Claire event?

The Marketing/PR Dept. has several cameras available for loan.  
Call ext. 6927 for more information.



Connect With Us!  
SCRmedical



St. Claire HealthCare is a sponsored ministry of the Sisters of Notre Dame Covington Province

