

St. Claire Regional Medical Center

NEWSBRIEF

Extraordinary Staff doing Extraordinary Things.....	2	Register now for the 22nd Annual Golf Event.....	4
Online Appointment Request/Cancellation.....	3	Enroll / Re-enroll for Kroger Community Rewards.....	6

Welcome Cheryl McClain, MD

“I want to be an advocate for the patient’s health, and to strive to improve their health by working with other providers to ensure they are getting the quality care that they deserve.”

St. Claire Regional (SCR) is proud to welcome Cheryl McClain, MD, a board certified family physician and certified physician executive, as our new associate chief medical officer for primary care.

McClain comes to SCR with a wealth of experience, most recently as a family practitioner at the Lexington Clinic, where she also served on the board of directors. She has held a variety of medical leadership roles during her professional career, previously acting as the medical director for Jessamine County EMS and as head of sections for Jessamine Medical Center Family Medicine.

In her new role at SCR, McClain will work with physicians and advanced practice professionals in family medicine, internal medicine, pediatrics, behavioral medicine and hospice/palliative care. She says she hopes to use her leadership skills and passion for helping others to enhance the patient experience. “I want to be an advocate for the patient’s health, and to strive to improve their health by working with other providers to ensure they are getting the quality care that they deserve,” McClain says.

McClain adds that she is excited to have joined a patient-centered organization like SCR. “I just love this organization because SCR wants to do the right thing by the patient on an individual basis,” she says. “We meet them where they are and help them achieve their best health.”

McClain received her medical degree from the University of Kentucky, where she also completed her residency. In her spare time, she enjoys spending time with her husband outdoors, with a particular interest in riding and raising horses.

Extraordinary staff *doing* Extraordinary things

Truly living our mission...

Submitted by: Mindy Morris-Sexton

Pause for Applause is a program dedicated to recognizing those staff members who go above and beyond in living out the St. Claire Regional mission: "To proclaim God's goodness through a healing ministry to the people of Eastern Kentucky." Leadership and management of St. Claire Regional paused on Aug. 5 to honor and recognize Syed Ali, MD, (anesthesiologist), Randall Stevens, RN, Dena Davis, LPN, and Lydia Trimble, RN, for their commitment to both St. Claire Regional and our community.



Pictured from left to right: Syed Ali, MD, anesthesiologist; Linda Fultz, vice president of Quality and Resource Management; Mark J. Neff, President/CEO; Dena Davis, LPN; Randall Stevens, RN; Lerae Wilson, CNO, vice president of Patient Services; Riki Watts, director of Surgical Services.

While performing a pre-teaching in the parking lot to a patient who was anxious to enter the facility, Dr. Syed Ali, Randall Stevens and Dena Davis responded to a call for help, as an individual was found in cardiac arrest in their vehicle. Immediately, they started chest compressions and contacted the Emergency Department. Dr. Ali then jumped into the driver's seat of the car and drove it to the ambulance bay, where the ER staff could then assume care. These three staff members are admired for not just providing excellent patient care within our hospital walls, but for providing it outside of them, too.



Pictured from left to right: Linda Fultz, vice president of Quality and Resource Management; Angela Johnson, assistant nurse manager – 4C; Mark J. Neff, President/CEO; Lydia Trimble, RN; Lerae Wilson, CNO, vice president of Patient Services; Riki Watts, director of Surgical Services.

While providing care for an elderly woman, Lydia learned that her patient's sister was also admitted to our facility. The patient explained that she and her elderly sister are very close and speak two to three times daily. Lydia then took it upon herself to place her patient in a wheelchair and transport her to the other unit to visit with her sister. She is admired for providing total holistic care for her patient.

Amazing. Medicine. Close to Home.



You can now
REQUEST or CANCEL
an appointment online!

You can now request or cancel an appointment with a St. Claire Regional provider directly from our website!

To request an appointment, go to www.st-claire.org and click on the "Request Appointment" tab on the far right side of the navigation menu. The form is quick, easy and completely secure! Simply provide your personal information and a brief description of why you need an appointment. Your privacy is important to us, so we will never share your information with others. After submitting the form, a scheduler will contact you within 24 hours, Monday through Friday, to schedule an appointment that works for you.

Canceling an appointment is just as simple! From our homepage, place your mouse over the same "Request Appointment" tab and click "Cancellation." Fill out the accompanying form to cancel, or choose to have us contact you to reschedule your appointment for a more convenient time.

In the event of a true medical emergency, call 911 or go to the nearest hospital immediately. St. Claire Regional's Emergency Department is open 24 hours a day, seven days a week, to provide critical medical care when you need it most.



Join us Friday, Aug. 19, from 1-3 p.m. ONLY for a

SkinMedica® Pop-up Event!

In addition to our summer sale savings...

- ★ **Receive a FREE Full-sized Essential Defense** w/ every SkinMedica® purchase!
- ★ **Get a FREE Skin Consultation** from an Allergan SkinMedica® representative!
- ★ **Earn \$10 in SkinMedica® Cash** plus **100** points for every \$100 you spend on SkinMedica® products!

SkinMedica®
An Allergan Company

WOMEN'S IMAGING
& AESTHETICS
St. Claire Regional
Medical Center



It's not too late to register!

Sign your team up by August 25 to join in on the fun!

Don't have a team? Don't worry. Registration is available for individuals, too!

Visit www.st-claire.org/golf2016 to register and learn more.

Registration is still open for the 22nd Annual St. Claire Foundation Benefit Golf Outing, which will take place on Thursday, Sept. 8, at Eagle Trace Golf Course. The golf outing's proceeds support the St. Claire Charity Care Fund, which helps St. Claire Regional provide care to indigent patients and families.

"Last year, St. Claire Regional provided \$3.4 million, at cost, in charity and uncompensated care," St. Claire Foundation Executive Director Tom Lewis said. "The support we receive through our annual golf outing helps us continue to fulfill our mission of serving people regardless of their ability to pay."

The St. Claire Foundation Benefit Golf Outing is a shotgun scramble with teams of up to four people using a best-ball format. There will be morning and afternoon flights, and in each flight, there will be



The foundation's annual golf outing is popular among local and regional organizations alike, with golfers from across the state traveling to participate. "I cover half of the state of Kentucky with my business so I have been to a lot of golf scrambles, and there's just no event that is better than this one," Scott Poage with American Business Systems (ABS) said. "Our hospital is a huge part of our community," Poage added. "A lot of people like to complain and don't focus on the positive aspect of things, but if we didn't have St. Claire, it would be a huge loss. They not only do a lot for our community, but for all the counties around us." Poage is pictured here with his ABS team members during last year's outing.

awards for first, second and third place teams based on handicap, and a first place award for the team with the overall lowest score.

There will also be many door prizes, and participants will receive a buffet lunch and either breakfast or a boxed supper, depending on the flight in which they play. Larry Fannin Chevrolet-Buick-GMC will also sponsor a \$100,000 hole-in-one shootout at the conclusion of each flight. The four golfers whose tee shots are closest to the pins on Eagle Trace's four par-threes will get a chance to make a hole-in-one for \$100,000. In addition, all golfers will have a chance to win a prize, including a new car, if they make a hole-in-one during their round.

The Golf Ball Drop Raffle sponsored by Fleming-Mason Energy will also return for the 22nd annual event. During lunchtime, numbered golf balls will be dropped from a Fleming-Mason Energy bucket truck onto a target. The owner of the first ball into the hole (or nearest to it) will win half of the raffle pot, up to \$5,000. Chances are \$10 each and can be purchased online or mail-in entry form.

For more information or to request a brochure/registration form, contact Tom Lewis, St. Claire Foundation Executive Director, at 606.783.6512 or via email at telewis@st-claire.org, or visit www.st-claire.org/golf2016 to register online.

GOLF BALL DROP RAFFLE ENTRY FORM

To purchase chances, complete the entry form and return it, with payment, to:

St. Claire Foundation, 222 Medical Circle, Morehead, KY 40351.

Or you may buy chances online at www.st-claire.org/golfballdrop.

Online sales will close on Sept. 7 at noon EDT.

Name: _____

Daytime Phone: _____

Address: _____

City/ST/ZIP: _____

Email: _____

of Chances: _____

Payment (# of Chances x \$10): _____

Look Your Best This Summer.

Stop by to take advantage of our summer sale now through August 31, or call **606.783.6760** to schedule a **FREE skin consultation.**



BOTOX[®] —Cosmetic
onabotulinumtoxinA injection
\$9 per unit
Plus receive 200 **bd** pts

Juvederm[®]
\$50 off
any Juvederm Filler
Plus receive 200 **bd** pts

Juvederm[®]
VOLUMA[®] XC
Buy 1 get 50% off
your second
Plus receive 400 **bd** pts

Latisse[®]
(bimatoprost ophthalmic solution) 0.03%
Buy 2 get \$50 off
Plus receive 300 **bd** pts

Vitalize Chemical Peels
50% off 1
(limit 1 per customer)
Plus receive 50 **bd** pts

kybella[®]
(deoxycholic acid) injection 10 mg/mL

Save \$300
off your first session
Plus receive 400 **bd** pts








KYBELLA[®] is the first and only FDA-approved injectable treatment that contours and improves the appearance of moderate to severe fat below the chin, sometimes referred to as "double chin."

SkinMedica[®]
An Allergan Company

the #1 medically dispensed, prescription-strength skin care system that can actually transform your skin

Buy More, Save More on SkinMedica[®] Essentials

Purchase TNS Essential Serum +
1 more SkinMedica[®] Essential = Receive \$40 off
2 more SkinMedica[®] Essentials = Receive \$90 off
3 more SkinMedica[®] Essentials = Receive \$150 off

- 
TNS Essential Serum
100 **bd** pts
- 
TNS Recovery Complex
50 **bd** pts
- 
TNS Eye Repair
25 **bd** pts
- 
HA5
100 **bd** pts
- 
Lytera
50 **bd** pts



Don't forget, with every purchase you'll also earn **bd** points that turn into cash for future buys!

www.brilliantdistinctionsprogram.com

WOMEN'S IMAGING & AESTHETICS

St. Claire Regional Medical Center

Like us on **f**

Gift certificates available!

No additional discounts, promotions or offers apply with sale pricing.

GIVE WHILE YOU SHOP —

AND HELP US HELP OTHERS!

August is re-enrollment month!



**community
rewards**



St. Claire
FOUNDATION

Everyone enrolled to support
St. Claire Regional through
Kroger Community Rewards
MUST RE-ENROLL in the
program **EACH YEAR!**

RE-ENROLLMENT ENDS AUG. 31!

HOW TO ENROLL OR RE-ENROLL

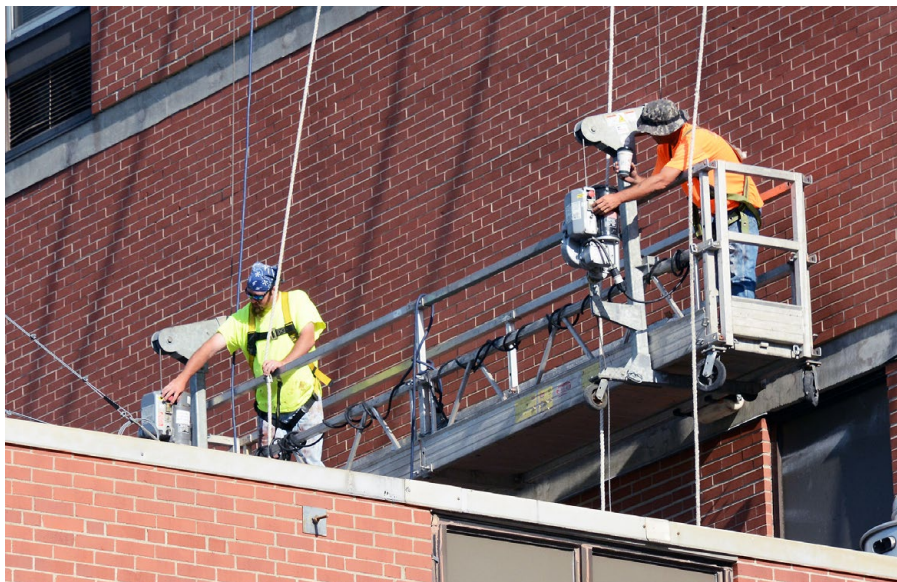
1. Register online at krogercommunityrewards.com
2. Have your Kroger Plus card handy when you register
(If you do not have a Kroger Plus card you can get one at
your local Kroger store)
3. Sign in or create an account
4. Click on "Enroll Now"
5. Enter the NPO number (35805) or the organization's name
(St. Claire Regional Medical Center) and click "Enroll"



Do you use your phone number at the register?

Call 800-576-4377 and select option 3 to enroll!

Medical center staining nears completion, *other projects to begin soon*



As the summer rolls on, so does SCR's facelift. Technicians with the Georgia-based company Nawkaw have spent the last several months staining the medical center's beige bricks to a dark red. With the majority of the main building complete, they have turned their attention to finishing the details. "They are going back and filling in some areas around the Emergency Department side of the building," St. Claire Regional Project Coordinator Joe Planck says.

Planck says unfortunate weather has slowed down the process, which is currently about 85 percent complete. "It's a little behind schedule," he says. "It's been a wet summer, which has made it difficult, but you can't control that."

After finishing the medical center, Nawkaw technicians will move forward with other staining projects on SCR's campus, including the Morehead Medical Specialists building adjacent to the hospital, and the Cancer Treatment Center building located on 2nd Street near the Center for Health, Education and Resources (CHER) Building. Planck says he hopes all projects will be finished by the fall.

When all staining is complete, the medical center, Morehead Medical Specialists building and Cancer Treatment Center will match the CHER Building and the new Medical Pavilion so SCR's campus will look cohesive.



A new roof structure for the former Morehead Clinic building is taking shape as St. Claire Regional prepares to renovate the entire structure. Next will be the staining of the white exterior brick on the smaller building to match the hospital's exterior coloring.
(Caption and photo by Cory Claxon, The Morehead News)

**“Proclaiming God’s goodness
through a healing ministry to the
people of Eastern Kentucky.”**

The Mission of St. Claire Regional

Anniversary Sale

Now - August 31



Model: PR-355
Color: Medium Autumn

Sit, Recline, Lift or Stand *all with the touch of a button*
Lift Chairs starting at \$499

- Over 20 models available (many models in stock)
- 5 size options including XXL
- Over 40 fabric color options
- Heat and massage available
- Lifetime manufacturer warranty on PRIDE® and Golden Technologies® lift mechanism
- Free delivery within a 50 mile radius

**POWER SCOOTERS
STARTING AT \$950**

- Multi-speed settings
- Modular design for easy serviceability
- Removable front canvas basket
- Lightweight for easy portability



Join us Friday, August 26
for Customer Appreciation Day!

● Register to win more than \$2,600 in door prizes!
Including, a power scooter, Asics and Brooks shoes, grill, canopy,
zero gravity lounger and lots more!

● Enjoy FREE grilled gourmet hot dogs! Noon - 6 pm

St. Claire Regional
FAMILY MEDICAL  **SUPPLY**



25%ff
ALL SHOES

Orthotic • Active • Everyday



ASICS • DR. COMFORT • APEX • BROOKS • AETREX • SANITA

25%ff
ALL CANES AND
ACCESSORIES



Stylish
BIFOCAL SUNGLASSES
AS LOW AS **\$10.50**



Top/Base Coat + Nail Color of Your Choice **\$20**
DR.'S REMEDY® NAIL CARE PRODUCTS

Tea Tree Oil • Garlic Bulb Extract
Vitamin C & E • Wheat Protein

CHOOSE FROM MORE THAN 20 COLORS



25%ff
BACK & JOINT
PAIN RELIEF

- Great for arthritis, neck and back pain, sore muscles and more
- Apply Biofreeze right where it's needed and without any mess
- Delivers fast pain relief



25%ff
ALL SCRUBS



SkinMedica®
An Allergan Company

the #1 medically dispensed,
prescription-strength skin care system
that can actually transform your skin

Buy More, Save More on SkinMedica® Essentials

Purchase
TNS Essential Serum +

- 1 more SkinMedica® Essential = Receive **\$40 off**
- 2 more SkinMedica® Essentials = Receive **\$90 off**
- 3 more SkinMedica® Essentials = Receive **\$150 off**



TNS Essential Serum



TNS Recovery Complex



TNS Eye Repair



HA5



Lytera

MONDAY - FRIDAY
8 a.m. to 6 p.m.

SATURDAY
10 a.m. - 2 p.m.

www.scrcfamilymedsupply.com | 606.784.2414
Located in the Morehead Kroger Shopping Center across from LOWE'S

Like us on

St. Claire Regional
FAMILY MEDICAL SUPPLY

No additional discounts, promotions or offers apply. 8/16



September 2016 Birthdays

9/1

Sharon Jean Gee ICU
 Robert Dean Hamilton Family Medical Supply
 Howard J McClain HIM
 Amber D Munday Respiratory Therapy
 2
 Vicki L Adkins Medical Group Admin
 Troy William Crossley PACU
 Fern Elaine Isaac Environmental Services
 Annette Sparks Home Health
 3
 Sara Rachel Fields Behavioral Health Unit
 4
 Christopher S Duff Information Services
 Kimberly S Hamilton Food Services
 5
 Geraldine A Crossley TCU
 Jessica Dawn Duncan Family Medicine
 Angela C Fryman CRSS
 Anthony J Looney 4th Floor Nursing
 Garrett M McGuire Infusion Solutions
 6
 Charli Anne Hamlin Food Services
 Debra A Hayes TCU
 Sharlet N Kidd CRSS
 Charlene Melzer FM - Morehead
 Donna Parker Food Services
 Devin Ryan Patrick Nursing Administration
 Libbie Larae Perry Patient Access
 Rachael N Rice Laboratory
 7
 Robin Camille Hale Behavioral Health Unit
 Glenna Kay Moore Environmental Services
 8
 Stephanie Laray Carter Pharmacy
 Tonya Joan Conley FM - Morehead
 Edith G Fields FM - Sandy Hook
 Sarah A Flynn Emergency Department
 Stephanie M Garvin Emergency Department
 9
 Charlotte Johnson Food Services
 Gloria J Riggs FM - Olive Hill
 10
 Elizabeth Marie Hobbs Infusion Solutions
 Leandra D Parker FM - Morehead
 Meleah Rae Roe Patient Access
 Sharon Wells Fulkerson Emergency Physicians
 11
 Karen Marie Hunt 4th Floor Nursing
 Jacob E Perry Cave Run General Surgery

12

Regina Sue Adams Home Health
 Carrie J Gross Emergency Department
 Lalona Lynn Hall HIM
 Kristi L Helton Telecare
 Alma B Krueger Environmental Services
 Rhonda Charlene Lewis Hospice
 Lainey Caitlin Mattox AHEC
 Michelle Lee Rayburn Nursing Administration
 Suzanne Russell AHEC
 Regina Marie Swim Family Medicine
 Ernest Watson Central Transport
 Rebecca A Winkleman TCU
 13
 Teretha Brooke Cole Emergency Department
 Heidi K McDaniel MMS Administration
 14
 Heather Dawn Burton 3rd Floor North
 Robin A Donehue 4th Floor Nursing
 Crystal D Gardner Central Billing Office
 Christopher S Taylor Facilities Management
 15
 Christa J Thompson Nursing Administration
 16
 Rosemary A Curtis Pathology
 Mary E Jessee Food Services
 Cara N Plank Cytology
 Kristina R Thompson TCU
 Cory G Yoder House Staff
 17
 Carmen M Corbin Patient Financial Services
 Anita Jo Harris Home Health
 Robin L Sorrell CRSS
 18
 Kara Nicole Given Home Health
 Crystal G Howard FM - Morehead
 Angela Dawn Johnson 4th Floor Nursing
 Cheryl A Whitt Counseling Services
 19
 Kristen Elaine Ginn Counseling Services
 Tiffany Nicole Pack Laboratory
 Billi Nell Prater Patient Financial Services
 Megan Jo Riggs Home Health
 Megan R Smallwood Emergency Department
 Geoffrey Co Sy Materials Management
 20
 Jarrod A Flora Home Health
 21
 Jeff Flannery Financial Services
 Kelsey Nicole King Float Dept - Unit Sec
 Kristen Prather Financial Services

22

Kimberly R Cundiff FM - Olive Hill
 Chad W Jaynes HIM
 Anissa Jewell Jenkins Home Health
 Shandy Marcus Karrick House Staff
 William D Thomas Emergency Department
 Jacqueline T Winkleman Home Health
 23
 Tosha Lea Bates Cave Run General Surgery
 Melissa Dawn Gilliam FM - Olive Hill
 Allison J Kelley 3rd Floor North
 Charlotte E Kinney 3rd Floor Central
 Tara R Mains Pharmacy
 David Francis Race Administration
 Molly J Turner Nursing Administration
 24
 Amy Jo Conley-Sallaz House Staff
 Mary Beth Cox Pharmacy
 Sheila Kay Psimer Laboratory
 Kristen Nichole Rowley Cave Run General Surgery
 David Stapleton Infusion Solutions
 25
 Jessica Blair Duvall HIM
 Jessica Kay Hatton FM - Morehead
 26
 Danielle N Morris Pharmacy
 27
 Matthew L Armitage Central Scheduling
 Khirsten A Brewer OPCC
 Paz T Brewer 3rd Floor Central
 Kimberly A Withrow FM - Owingsville
 28
 Tania Y Brockman CT Scan
 Edna R Gagliano Grants
 29
 Stanley Dale Burrey Environmental Services
 Dena Jo Davis Same Day Surgery
 Jacob Evan Fritz Speech Therapy
 Anna Ellen Johnson MMS Clinical Services
 Mitchell Kiser Emergency Department
 Debra Ann Neff Physical Therapy
 30
 Diane Michelle Cooper Infusion Solutions

Family Medical Supply sponsoring SCR running group



Running group members pictured are, from left: Debbie Neff, PT; Bryan Cardenas, PT; Katie Bloom, OT; Arica Conley, PT; Morgan King, OT; Amber Gregory, OT; Beth Reynolds, OT; Sean Kelsey; and Lauren Carney, PT.



Stop by FMS during the month of August to save 25% on all shoes, including Brooks, during our Anniversary Sale.

BROOKS

St. Claire Regional Family Medical Supply (FMS) is now the proud sponsor of its very own running group! The group, comprised of SCR Staff, will participate in the Hot Hot Hundred race on Saturday, Aug. 20, at Hutton-Loyd Tree Farm in Wallingford, Kentucky. One loop of the course is 6.2 miles with 1,460 feet of elevation gain and equal descent. Each member of the group will be competing individually in the 10K event. Group members will all be racing in Brooks running shoes from FMS.

Good luck, and Run Happy!



UPCOMING C.E. Programs

August 19 | Tumor Board

8:00 - 9:00 AM
SCR Teleconference Room
Credit: ACPE, Category 1 AMA, Nursing

August 23 | BLS Check Off

1:00 - 4:00 PM
CHER 208
Register with KaSandra Hensley at
kasandra.hensley@st-claire.org or ext. 6830.

August 26 | Breast and Ovarian Cancer Prevention: Risk Stratification and Management in Young Women

6:00 - 7:30 PM
CHER 102
Register online at: www.neahec.org/WomensHealth

September 2 | Tumor Board

8:00 - 9:00 AM
SCR Teleconference Room
Credit: ACPE, Category 1 AMA, Nursing

September 7 | Journal Club

12:00 - 1:00 PM
SCR Library - Education Room
Credit: ACPE, Category 1 AMA

September 14 | Morbidity & Mortality

12:00 - 1:00 PM
SCR Library - Education Room
Credit: ACPE, Category 1 AMA

Summer Linen Sale

Date: Thursday, August 18 | 7 am - 5 pm

Date: Friday, August 19 | 7 am - 3 pm

Location: Cafe D

Sherpa throws and blankets, quilt sets, comforter sets, memory foam pillows, sheet sets and more!

Cash • Checks • Credit Card • Payroll Deduction

All proceeds benefit the St. Claire Foundation Special Programs. For more information call 606.783.6797.

SkinMedica® Pop-up Event!

Date: Friday, August 19

Time: 1 - 3 pm

Location: St. Claire Regional Women's Imaging Center
Located on the first floor of the hospital

In addition to our summer sale savings...

★ **Receive a FREE Full-sized Essential Defense**
w/ every SkinMedica® Purchase!

★ **Get a FREE Skin Consultation**
from an Allergan SkinMedica® Representative!

★ **Earn \$10 in SkinMedica® Cash**
plus 100 points every \$100 you spend on SkinMedica® products!

For more information call 606.783.6760



222 Medical Circle • Morehead, KY 40351



St. Claire Regional is
a sponsored ministry of the
Sisters of Notre Dame
Covington Province

NEWSBRIEF

Have an article or event to submit for the Newsbrief?

Please send articles and/or information to be placed
in the SCR Newsbrief to michael.ash@st-claire.org

Visit the SCR web site at www.st-claire.org/newsbrief
to read past editions of the SCR Newsbrief

Need a Camera to Cover a SCR Event?

The Marketing/PR Dept. has several
cameras available for loan.

Contact Marketing at ext. 6927 for more information.



connect with us
SCRmedical



Join us Friday, August 26 for **Customer Appreciation Day!**

- Register to win more than \$2,600 in door prizes!
Including, a power scooter, Asics and Brooks shoes, grill, canopy,
zero gravity lounger and lots more!
- Enjoy **FREE** grilled gourmet hot dogs! Noon - 6 pm
- Take advantage of our Anniversary Sale!