

## St. Claire Regional Medical Center

**NEWSBRIEF**

SCR Offers Online Bill Pay.....	2	SCR Medical Library Open House.....	4
HA <sup>5</sup> Special Instant Rebate .....	3	Oh Baby! It's a Baby Shower.....	5

## St. Claire Regional, Morehead State University and UK College of Medicine Expand Rural Physician Leadership Program

As a direct response to the shortage of physicians across the Commonwealth of Kentucky, St. Claire Regional Medical Center (SCR), Morehead State University (MSU) and the University of Kentucky (UK) College of Medicine recently announced plans to expand the Rural Physician Leadership Program (RPLP) in Morehead. The expansion will not only significantly increase the number of medical students in the RPLP, it will also offer them the option to complete a three-year (year-round) medical education program.

SCR developed the RPLP jointly with the UK College of Medicine and MSU in 2012. Since then, 32 medical students have successfully graduated from the program. "Doing more to prepare for the shortage of rural healthcare providers only makes sense for us, as we have continued to be dedicated to the training of medical providers in our region since our doors opened," Mark J. Neff, SCR President/CEO, said.

*"We are proud to say that we have more than 50 years of experience in training medical students as a teaching affiliate of the University of Kentucky, and we look forward to many more."*

-Mark J. Neff, SCR President/CEO



Mark J. Neff, SCR President/CEO and MSU President Wayne D. Andrews at the press conference that was held on Feb. 18 announcing the expansion of the RPLP program.

*\*Photo courtesy of Morehead State University*

"Working with UK and St. Claire Regional through our Rural Physician Leadership Program is a win-win, not only for Morehead State University, but for our students and the communities we serve," MSU President Wayne D. Andrews said. "We are delighted to extend these working relationships to expand our reach in helping meet the needs of East Kentucky."

*continued on page 2*

# Rural Physician Leadership Program Expansion

*continued...*

During the press conference, Andrews elaborated on the importance of the program's expansion. "Too often, we have to go out of state to find physicians and bring them here. There's something wrong with that picture," Andrews said. "We need to make sure we can educate our medical students in a rural community and keep them in a rural community."

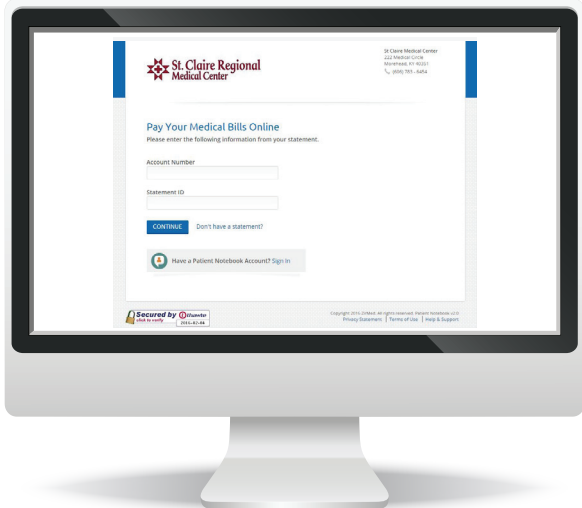
During the conference, David Saxon, longtime professor of biology at MSU, said the partnership with SCR isn't simply one of convenience. He recounted student stories about the quality of one-on-one attention they received while at SCR, and commended the hospital for its dedication to the program. "St. Claire Regional and the physicians over there wouldn't have been picked for this collaboration if they weren't very good physicians and very good teachers," he said. "We look forward to continuing our partnership with them. This is truly a great opportunity — not only for our students, but for the region."

In addition to building onto the existing RPLP in Morehead, the program will also expand to the western part of the state, bringing Western Kentucky University, King's Daughters Medical Center and The Medical Center at Bowling Green on board as early as 2018.



Rural Physician Leadership Program class of '15  
Front row: Kris Wolfe, Shanna Sharber, Ashton Nix and Katelyn Banks  
Back row: Eric Fleming, Michelle Smith, Kenisha Webb and Courtney Cundiff

# St. Claire Regional now offering online bill pay

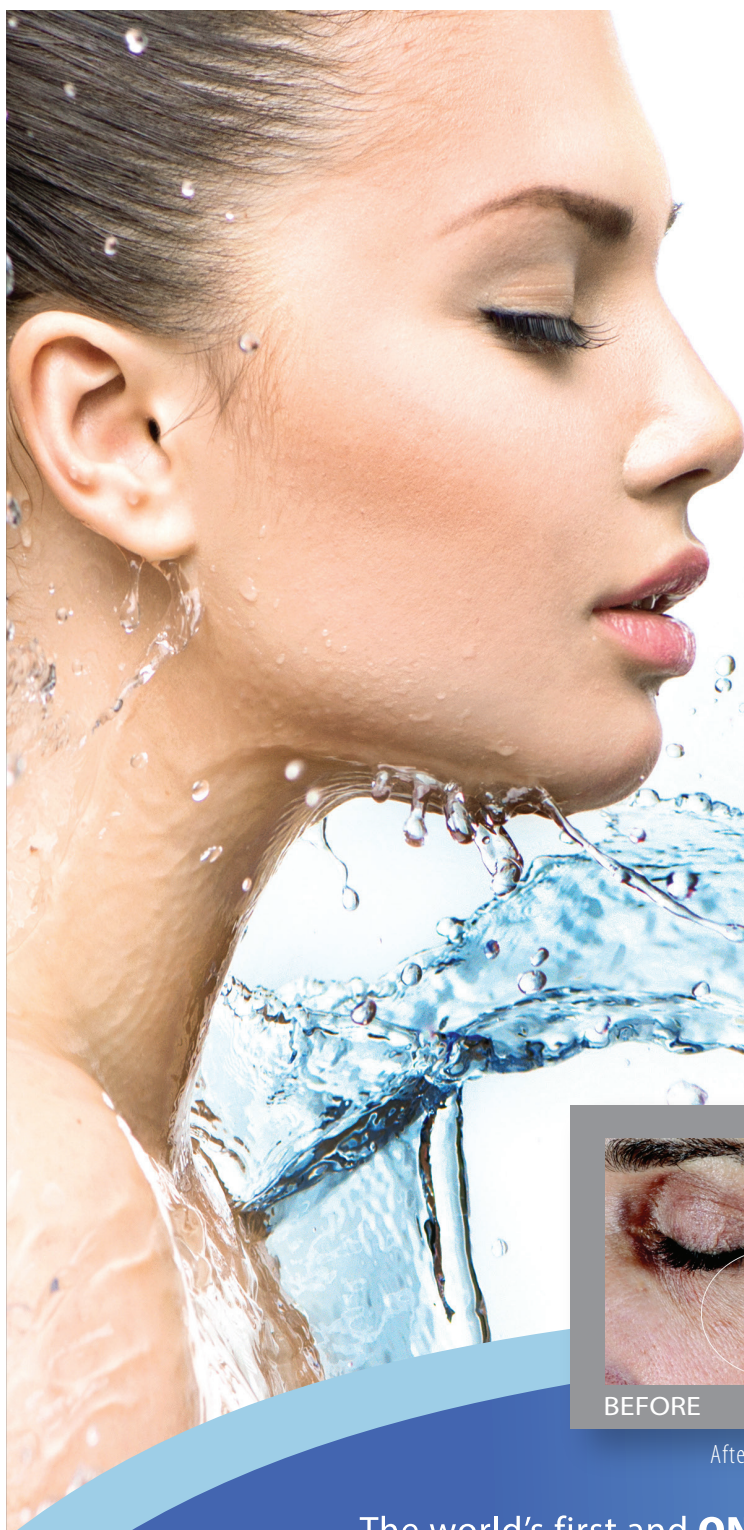


St. Claire Regional (SCR) is pleased to announce the addition of online bill pay for our patients. Online bill pay can be reached through MyHealth Patient Portal or from SCR's homepage at [www.st-claire.org](http://www.st-claire.org).

Paying your bill online is easy! Once you have reached SCR's Patient Notebook page, enter the account number and statement ID that appear on your bill. If you do not have a copy of your bill, you can review your information and a breakdown of charges through your MyHealth Patient Portal's billing function, or you may enter your patient information by following the "Don't have a statement?" link. Payments may be made with a debit or credit card, and there are no processing fees. Once your payment has been processed, you will receive an authorization code and a receipt via email (if applicable).

*Have a question? An SCR patient financial counselor will be happy to help you in answering any inquiries you might have about your bill. For assistance or additional information, call 606.783.6454.*





# Hydration never looked so good.

Smoother skin in just **15 minutes**.  
Healthy-looking, more hydrated skin in **8 weeks**.

**\$25**  
Instant Rebate  
while supplies last



After 8 weeks of use. Photos have not been retouched.



The world's first and **ONLY** rejuvenating hydrator that **INSTANTLY** smooths the appearance of fine lines and wrinkles! With continued use, HA<sup>5</sup> also supports the skin's natural ability to replenish its own hyaluronic acid for increased hydration and long-term skin health!



WOMEN'S IMAGING & AESTHETICS  
St. Claire Regional Medical Center

Located on first floor of St. Claire Regional Medical Center  
606.783.6760 | Gift Certificates Available



# St. Claire Regional Medical Library hosts open house to showcase recent remodeling

The St. Claire Regional Medical Library hosted an open house Thursday, Feb. 18, to show off recent renovations and updates. The makeover was a joint effort between SCR and the University of Kentucky College of Medicine. The newly refurbished space features a computer lab, R2 Digital Library, meeting/education rooms, medical journals, study areas and more! Artwork by local photographer Dean Hill is now on display, along with the SCR “Advancing Our Legacy” 50th anniversary photo. Stop by the library today to tour the updated facility! Regular business hours are Monday through Friday from 8 a.m. to 4:30 p.m.



**WOMEN'S IMAGING  
& AESTHETICS**

 St. Claire Regional  
Medical Center

**Get your  
*LEGS*  
ready for summer**

Try Sclerotherapy *now* through *April 15*  
for only **\$200 a session!**





Join Us for a Community Baby Shower

15<sup>th</sup> Annual

# Oh Baby! It's a Baby Shower

For Planning, Pregnant, New or Adopting Parents

**April 2, 2016** 10 AM - 1 PM  
Morehead Conference Center

### Featuring:

#### Informational Booths

Breast Feeding  
Dental Care  
Infant Care  
New Fathers  
Immunizations  
Pre-/Post-natal Education  
Financial Information  
Safety Issues  
Community Resources  
& many more!

#### Educational Sessions

Fit Pregnancy  
*Logan Murphy, DO*  
Muscle Aches & Pains of Pregnancy  
*Morgan King, MSOT, OTR/L*

Register by 11 AM to be eligible for  
**Door Prizes**

Enter for a chance to win a **FREE Sneak Peek Ultrasound**



[www.neahec.org/babyshower](http://www.neahec.org/babyshower)



**UKHealthCare**

Women's Health  
Obstetrics & Gynecology



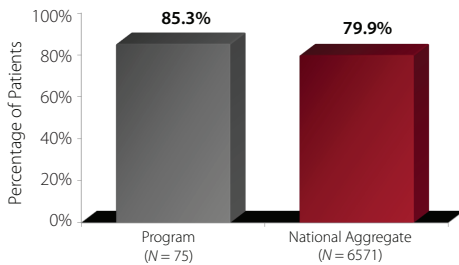
# St. Claire Regional Medical Center

St. Claire Regional Medical Center's Geriatric and Adult Inpatient Programs use the CQI+ Outcomes Measurement System to monitor outcomes for the change in clinical symptomatology and patient satisfaction. The program has been collecting data since 2014.

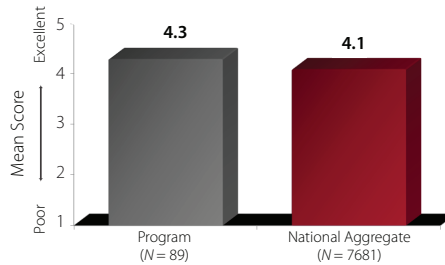
## How are we doing?

### Geriatric Inpatient Program

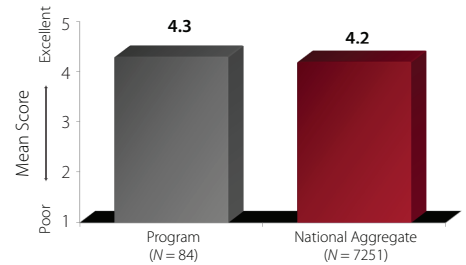
93 percent of St. Claire Regional Medical Center patients would recommend the program to family members or friends who needed similar treatment.



The program demonstrates a greater percentage of patients who rate their Length of Stay as 'About Right' compared to the National Aggregate.



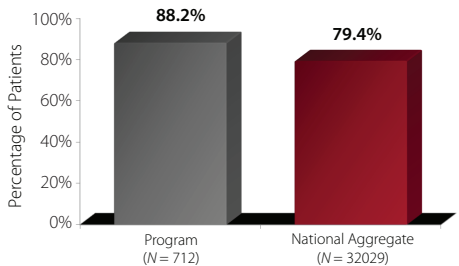
The program demonstrates greater Patient Satisfaction with Early Phase of Treatment compared to the National Aggregate. Patient satisfaction scores are measured on a scale from 1 (Poor) to 5 (Excellent).



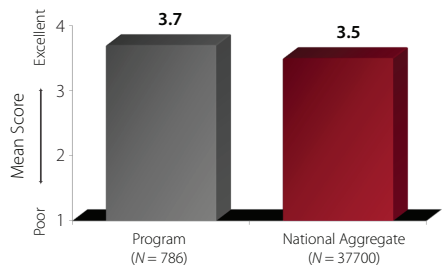
The program demonstrates greater Patient Satisfaction with Discharge from Treatment compared to the National Aggregate. Patient satisfaction scores are measured on a scale from 1 (Poor) to 5 (Excellent).

### Adult Inpatient Program

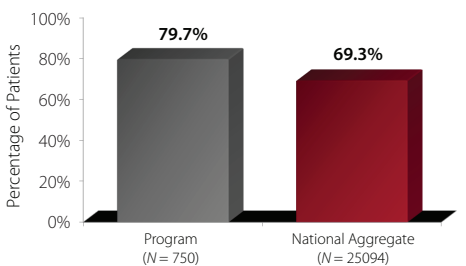
St. Claire Regional Medical Center's Patient Satisfaction with Quality and Early Phase of Treatment ratings were higher than 94 percent of other programs.



The program demonstrates a greater percentage of patients who rate their Length of Stay as 'About Right' compared to the National Aggregate.



The program demonstrates greater Patient Satisfaction with Helpfulness of Treatment compared to the National Aggregate. Patient satisfaction scores are measured on a scale from 1 (Made Things Worse) to 4 (Helped Me a Lot).



The program demonstrates a greater percentage of patients who Would Definitely Recommend the Program compared to the National Aggregate.



# St. Claire Regional Welcomes NEW STAFF

**Sharon Irene Allen - Kinney**

*FM - Sandy Hook*

**Alicia Renee Chambers**

*3rd Floor North*

**Dena Jo Davis**

*Same Day Surgery*

**Kara Wendellyn Elam**

*3rd Floor North*

**Amanda Lashae Francis**

*Patient Access*

**Billie Jo Hanshaw**

*Environmental Services*

**Jeet D Joshi**

*Counseling Services*

**Shane Travis Kiser**

*Surgery*

**Kimberly Ann Lewis**

*3rd Floor North*

**Cameron James Lynch**

*Central Transport*

**Charlene Melzer**

*FM - Morehead*

**Andrea Joann Mills**

*Health Information Management*

**Candace Renee Nickell**  
*Cave Run General Surgery*

**Terence William O'Neill**  
*MMS Clinical Services*

**Rebecca Marie Parker**  
*Nursing Administration*

**Stephanie Roshelle Riley**  
*Float Dept - Unit Sec*

**Ryann Nicole Roberts**  
*Infusion Solutions*

**Beverly Ann Stamper**  
*Cave Run Clinic Administration*

**Jacob Ethan Wells**  
*Food Services*



## UPCOMING C.E. Programs

### March 4 | Tumor Board

8:00 - 9:00 AM

SCR Teleconference Room

Credit: ACPE, Category 1 AMA, Nursing

### March 8 | Morbidity & Mortality

12:00 - 1:00 PM

SCR Library - Education Room

Credit: ACPE, Category 1 AMA

### March 16 | Interdisciplinary Grand Rounds

12:30 - 1:30 PM

SCR Library - Education Room

Credit: ACPE, Category 1 AMA

### March 18 | Tumor Board

8:00 - 9:00 AM

SCR Teleconference Room

Credit: ACPE, Category 1 AMA, Nursing

### March 22 | BLS Check Off

1:00 - 4:00 PM

CHER 208

RSVP with KaSandra Hensley at ext. 6830 or  
[kasandra.hensley@st-claire.org](mailto:kasandra.hensley@st-claire.org)

# NEWS & EVENTS



## Childbirth Classes\*

March 7 | 7-9 p.m.

## Breastfeeding Support Group

March 10 | 6-7 p.m.

For more information about these classes, call our Family Medicine location in Morehead at **606.784.3771**.

\*Childbirth classes are free to Family Medicine patients ONLY



222 Medical Circle • Morehead, KY 40351

# One Night ABOUT YOU

4<sup>th</sup> Annual



Your Health, Your Life, Your Well-Being  
A **FREE** Event Focused on Women

**Tuesday, April 19**  
Morehead Conference Center  
Health Screenings, Educational Sessions & Prize Drawings

For more information contact 606.783.6927  
St. Claire Regional Medical Center • UK HealthCare



St. Claire Regional is  
a sponsored ministry of the  
**Sisters of Notre Dame**  
Covington Province

## St. Claire Regional Medical Center **NEWSBRIEF**

### Have an article or event to submit for the Newsbrief?

Please send articles and/or information to be placed  
in the SCR Newsbrief to [michael.ash@st-claire.org](mailto:michael.ash@st-claire.org)

Visit the SCR web site at [www.st-claire.org/newsbrief](http://www.st-claire.org/newsbrief)  
to read past editions of the SCR Newsbrief

### Need a Camera to Cover a SCR Event?

The Marketing/PR Dept. has several  
cameras available for loan.

Contact Hannah Conn at ext. 6927 for more information.

