

St. Claire Regional Medical Center NEWSBRIEF

Breastfeeding, Newborn & Childbirth Classes.....3
Behavioral Health: How are we doing?.....4

FM Sandy Hook: Free Sports Physicals a Success.....6
September CE Events.....7

Tackling disaster preparedness SCR and MPD team up for Code Silver Drill

On Wednesday, Aug. 26, St. Claire Regional (SCR) participated in a Code Silver (active shooter) drill in coordination with local law enforcement officers from the Morehead Police Department (MPD). SCR staff members were informed of an impending drill but did not know the time or location the event would occur.

Just after 9 a.m. Nathan Adams, the MPD dispatcher playing the role of the shooter, entered the Human Resources' office on the seventh floor and demanded to see Travis Bailey, SCR vice president of administration. Unsatisfied with the response, Adams drew a simulated weapon, made his way to Bailey's office, closed the door and fired three simulated shots by shouting "bang, bang, bang!" Staff who observed the shooter were then required to follow SCR protocol to first notify others in the hospital of the emergency, and then react to protect themselves.

Following protocol, 911 was alerted of the drill scenario and the MPD Tactical Team arrived on scene to begin efforts to locate the shooter and secure the facility. They were equipped with ballistic gear and unloaded weapons to simulate the event as effectively as possible. The suspect was located and the seventh floor was searched and secured to conclude the drill.

continued on page 2



SCR Human Resources staff members Shirly Blair (left) and Wendy Jarrett (right) were caught off guard by the Code Silver drill that occurred at SCR recently. Staff members were aware a drill was impending, but not notified about the exact date, time or location. Nathan Adams, MPD dispatcher, played the role of the shooter during the drill.



**St. Claire Regional
Medical Center**

Check out our Facebook page to see more photos from the Code Silver Drill at www.facebook.com/SCRMedical.

continued from page 1

SCR held a similar drill at the end of July, but it only involved staff. David Race, MD, SCR medical director of disaster preparedness, had high hopes for the drill. “After the first drill, we learned so much,” Race said. “We know this drill, which more accurately simulated a real scenario, will help us even more to further update and streamline our policy.”

Gary Clarke, SCR disaster preparedness consultant, said, “So many things have changed since the policy was instituted. We want to make sure we are doing everything we can to keep staff and patients safe.”

Following the drill, a debriefing was held to gather feedback from police and SCR staff. Race and Clarke commended both groups for their efforts. “It was truly a real life scenario for the officers and an excellent opportunity for both of us. I think we learned a lot,” Clarke said. “This exercise has allowed us to think about how we shape our policy moving forward, and to make sure we are all on the same page.”

MPD Capt. Derrick Blevins said overall, the training was a success. “Very rarely do we get to practice something like this inside a building when there are people inside, so we want to thank you very much for inviting us,” he said. “It’s training for (SCR) but it’s training for us, too, and we take a lot from it.”

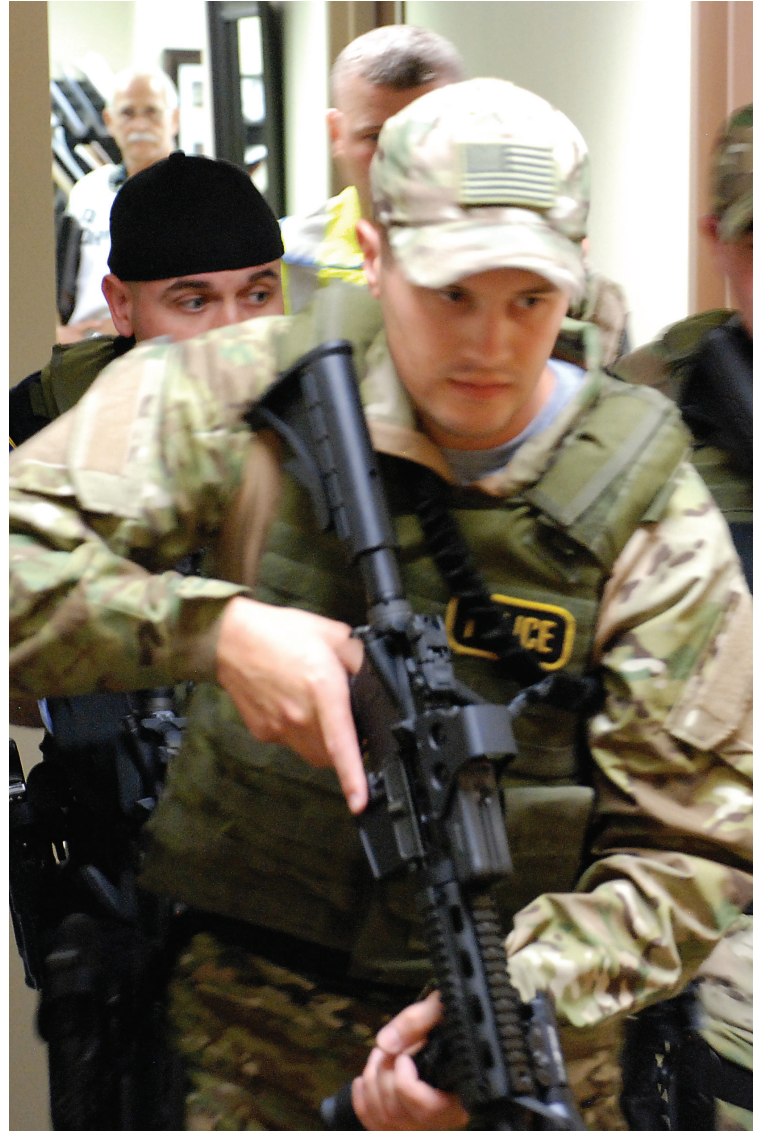
“At St. Claire Regional, we take preparation for disasters and other scenarios that may impact our patients, staff and visitors very seriously,” said Mark J. Neff, SCR President/CEO. “We want to make sure we are doing everything we can to not only provide quality healthcare, but also provide a safe environment.”

“We would like to thank the Morehead Police Department for partnering with us to make this possible,” Neff added.

SCR Emergency Text Notification System

In an emergency, this automated system allows SCR to text staff with important messages.

If you haven’t already,
Text the word **“Alert”** to **22300**
to begin receiving emergency text notifications.



The Morehead Police Department assisted St. Claire Regional in an active shooter drill Aug. 26. David Race, MD, SCR medical director of disaster preparedness, watches as MPD clears the hallway on the seventh floor of the hospital.



SCR staff and the MPD Tactical Team gather after the drill to discuss strengths and areas of improvement.



FREE Breastfeeding, Newborn & Childbirth Classes

Breastfeeding Classes

Join other expectant families to learn the benefits of breastfeeding and how to get started. Breastfeeding classes are offered from 6-8 p.m. on these dates:

- September 10
- October 8
- November 12
- December 10

Breastfeeding Support Group

Are you planning to or are you currently breastfeeding? Are you looking for or wanting to offer support and encouragement? Our breastfeeding support group is offered 6-8 p.m. on these dates:

- September 24

Newborn Care Classes

Babies don't come with instruction manuals! Join our Family Medicine Doctors for an overview of taking care of your newborn. Newborn care classes are offered from 6-8 p.m. on these dates:

- November 19

Childbirth Classes*

Get ready for what to expect and learn how to cope with labor and birth. For more information, call Betsy Meadows at 606-784-9890. Childbirth classes are offered in a series of four classes in a row on Mondays from 7-9 p.m. on these dates:

- September 14
- October 19

*Childbirth classes are free to Family Medicine patients ONLY
All other classes are free for all attendees



Offered by: **St. Claire Regional Family Medicine in Morehead**

on the 1st floor Center for Health, Education and Research (CHER)
across from St. Claire Regional

For more information contact Edna Gagliano at **606.783.7554**
or call our Family Medicine location in Morehead at **606.784.3771**.

SECOND ANNUAL GLOW & WALK RUN 5k 2015

Join us in our support of
Kentucky Organ Donor Affiliate

Pre-registration:

Prior to September 12th \$15.00

Registration:

September 13th through Race Day - \$20.00

Race Day registration 6:00pm - 7:00pm

Race begins at 7:15pm on October 3
at Jayne Stadium located on MSU's campus.

The first 50 participants to register will receive a race shirt.
Prizes, Refreshments and Goodies Bags available for all participants

Age Groups:

17 and under, 18-29, 30-39, 40-49, 50 and over.

Awards will be presented to the top three male & female finishers in each age group along with first overall male & female (no duplications of awards).

For questions email:

esgglowrun5k@gmail.com

Include Subject: 5k

or call 606.783.2461



St. Claire Regional Medical Center

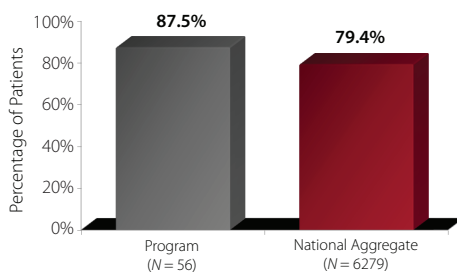
St. Claire Regional Medical Center's Geriatric and Adult Inpatient Programs use the CQI+ Outcomes Measurement System to monitor outcomes for the change in clinical symptomatology and patient satisfaction. The program has been collecting data since 2014.

How are we doing?

Geriatric Inpatient Program

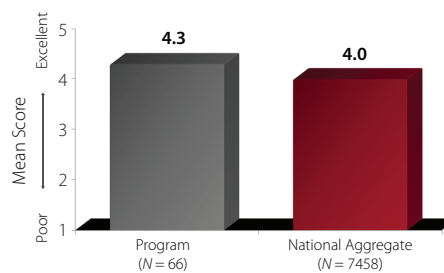
90 percent of St. Claire Regional Medical Center patients would recommend the program to family members or friends who needed similar treatment.

Percentage of Patient Rating Length of Stay as "About Right"



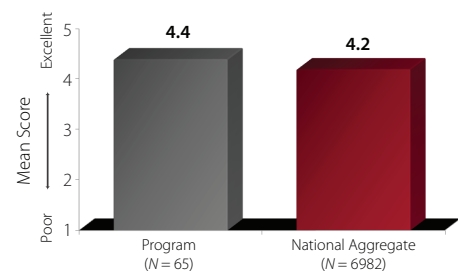
The program demonstrates a greater percentage of patients who rate their Length of Stay as 'About Right' compared to the National Aggregate.

Patient Satisfaction with Early Phase of Treatment



The program demonstrates greater Patient Satisfaction with Early Phase of Treatment compared to the National Aggregate. Patient satisfaction scores are measured on a scale from 1 (Poor) to 5 (Excellent).

Patient Satisfaction with Discharge from Treatment

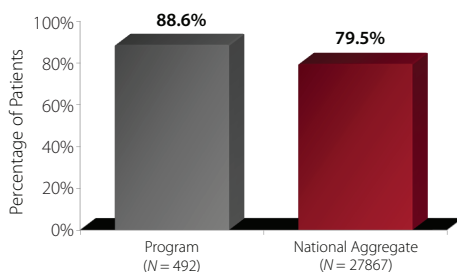


The program demonstrates greater Patient Satisfaction with Discharge from Treatment compared to the National Aggregate. Patient satisfaction scores are measured on a scale from 1 (Poor) to 5 (Excellent).

Adult Inpatient Program

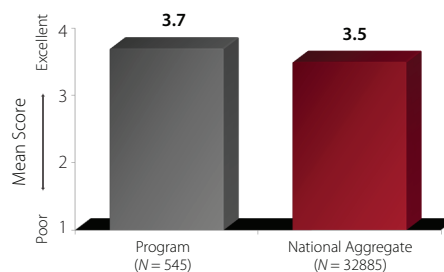
St. Claire Regional Medical Center's Patient Satisfaction with Quality and Early Phase of Treatment ratings were higher than 96 percent of other programs.

Percentage of Patients Rating Length of Stay as "About Right"



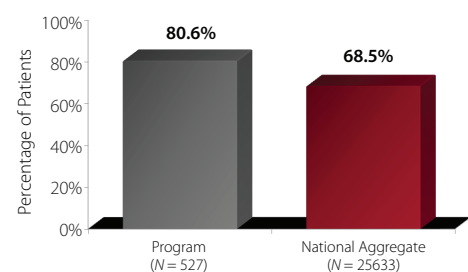
The program demonstrates a greater percentage of patients who rate their Length of Stay as 'About Right' compared to the National Aggregate.

Patient Satisfaction with Helpfulness of Treatment



The program demonstrates greater Patient Satisfaction with Helpfulness of Treatment compared to the National Aggregate. Patient satisfaction scores are measured on a scale from 1 (Made Things Worse) to 4 (Helped Me a Lot).

Percentage of Patients Who Would Definitely Recommend Program



The program demonstrates a greater percentage of patients who Would Definitely Recommend the Program compared to the National Aggregate.

March 10, 2015

Includes patients admitted from January 2014 to December 2014.

St. Claire Regional **Family Medicine**

SANDY HOOK

Provided over 100 free sports physicals

Submitted by: Donna Conkright, RN, clinic coordinator



Left to right, back row: Parker Banks, DO; Chad Gambrell, DO; Kristen Murphy, DO; William Murphy, DO; and Daniel McCarty (DO student)
Left to right, middle row: Alice Ferguson, CMA; Edith Fields, LPN; Vickie Cantrell, LPN; Twana Hatton, DO, Patricia Eldridge, RN; and Welma Henson, LPN
Left to right, front row: Khoi Tran, DO and Kathleen Harper, RT

A big thank you goes out to the clinic staff at St. Claire Regional Family Medicine - Sandy Hook for providing 104 free sports physicals on Tuesday, Aug. 11, to local students.

A special thanks goes out to the providers who took the day to help ensure the event to be a success. Those providers are, Twana Hatton, DO; Chad Gambrell, DO; Parker Banks, DO; Kristen Murphy, DO; William Murphy, DO; and Khoi Tran, DO.

SCR Women's Refresh Retreat: Celebrating its 12th year of worship and refreshment

Submitted by: Glenda Mays, retired SCR staff member



The women's retreat started in 2003 when two St. Claire Regional employees wanted to have a retreat for the women of SCR. They met with Sr. Marge, SCR's former director of mission integration, and a committee was formed to help create this event. The theme song was written by Dr. Mary Philips, SCR general surgeon, and titled "Refresh Our Hearts in Christ".

Every year a different theme is set for the event, but we always leave feeling refreshed. We always have a special guest speaker giving a rewarding presentation and the retreat committee puts on a skit. This year, we will be doing a "Christmas in October" theme, and Dr. Kimberly Williams, SCR's former vice president of medical affairs, will be our guest speaker.

The retreat is held at St. Joseph Heights Provincial House of the Sisters of Notre Dame in Covington. We take our meals with the Sisters of Notre Dame and there is always good food. It's very refreshing to hear the stories the sisters tell.

The tenth annual retreat was a tea party to thank the Sisters for having us at their convent. The retreat team served the Sisters and retreat ladies tea and desserts. Everyone had a party hat to wear.

Your invited!

**Join us on the evening of
Friday, Oct. 2 until Sunday, Oct. 4
at St. Joseph Heights in Covington, KY.**

More information to come or contact Sr. Marge Mouch
at 859.640.1440 or mmmouch@yahoo.com



Golf Ball Drop



Purchase your chance today!
You do not have to be present to win.

Thursday, Sept. 10, at 12:30 p.m.
Eagle Trace Golf Course

Sponsored by  **Fleming-Mason Energy**
A Touchstone Energy Cooperative

In conjunction with the 21st-annual
St. Claire Foundation Charity Golf Outing

Our fingers are crossed for a beautiful day at the 21st-annual St. Claire Foundation Golf Outing. Hopefully the only shower will be the sight of up to 1,000 golf balls raining down on a target during our Golf Ball Drop Raffle, sponsored by Fleming-Mason Energy.

At lunchtime, numbered golf balls will be dropped from a Fleming-Mason Energy bucket truck onto a target.

The owner of the first ball into the hole (or nearest to it) will win half of the raffle pot (up to \$5,000)! The rest of the proceeds will assist St. Claire Regional with preparations for a new medical office building to combine the healthcare providers and services of Cave Run Surgical Specialists and Morehead Medical Specialists.

Chances are \$10 each. Your number(s) will be emailed to you. Please keep that email. You need not be present to win. The winner will be notified. Chances are nonrefundable.

GOLF BALL DROP RAFFLE ENTRY FORM

To purchase chances, complete the entry form and return it, with payment, to: St. Claire Foundation, 222 Medical Circle, Morehead, KY 40351. Or you may buy chances online at www.st-claire.org/golfballdrop. Online sales will close on Sept. 9 at noon EDT.

Name: _____

Daytime Phone: _____

Address: _____

City/ST/ZIP: _____

Email: _____

of Chances: _____

Payment (# of Chances x \$10): _____

My check or cash is enclosed

I wish to pay with credit card

Credit Card #: _____

Exp. Date: _____

Name on Card: _____

St. Claire Regional Welcomes **NEW STAFF**

Tabitha Lynn Boone
Behavioral Health Unit

Khirsten A Brewer
3rd Floor North

Megan Renee Davis
3rd Floor North

LeeAnn Dawn Dotson
3rd Floor North

Jennifer Clay Gigenbach
Infusion Solutions

Morgan Danielle Ingles
Home Health

Brittany Danielle Jones
Environmental Services

Beth Ann Lambert
Nursing Administration

Chelsea Leigh Lawson
Family Medical Supply

Stephen Todd Loomis
Family Medical Supply

Amanda J McCormick
FM - Morehead

Magan Haley Meade
Behavioral Health Unit

Leandra D Parker
FM - Morehead

Katherine E Perry
Environmental Services

Nicole Amberly Price
3rd Floor North

Marcy Shah Puckett
Patient Access

Diana Michelle Rose
Emergency Physicians

Danielle R Sexton
4th Floor Nursing

Mohammed A Sheikh
ICU

Joshua Ethan Skaggs
Pharmacy

Ryan Dane Snowden
Cave Run General Surgery

Kiersten Nycole Thomas
ICU

Garrett B Webb
Security Services

Steven Douglas Wilson
Home Health



UPCOMING C.E. Programs

September 4 | **Tumor Board**

7:30 - 9:00 AM

SCR Teleconference Room

Credit: ACPE, Category 1 AMA

September 8 | **Morbidity & Mortality**

8:00 - 9:00 AM

SCR Library - Education Room

Credit: ACPE, Category 1 AMA

September 15 | **BLS Check Off**

1:00 - 4:00 PM

CHER 102C

RSVP with KaSandra Hensley at ext. 6830 or
kasandra.hensley@st-claire.org

September 16 | **Interdisciplinary Grand Rounds: "Metabolic Syndrome in Psychiatric Patients"**

12:30 - 1:30 PM

SCR- Educational Room

Credit: Category 1 AMA, ACPE

September 18 | **Tumor Board**

8:00 - 9:00 AM

SCR Teleconference Room

Credit: ACPE, Category 1 AMA

SAVE THE DATE!

NOVEMBER 7

TURKEY TROT 5K
MOREHEAD, KY



For more information on participation, volunteering or sponsoring the event,
contact Mary Horsley at 606.783.6476 or mahorsley@st-claire.org.



www.turkeytrotmorehead.com

NEWS & EVENTS

ROWAN CO. CARING & SHARING ALZHEIMER'S SUPPORT GROUP

Date: Monday, Sept. 7

Time: 6 - 7 p.m.

Location: Center for Health, Education and Research
1st Floor, 316 W. Second St., Morehead

For more information, contact Mary Horsley at 783.6476 or mary.horsley@st-claire.org

Rowan Co. Caring & Sharing meets the first Monday of every month at 6 p.m.

LOOK GOOD... FEEL BETTER

Date: Monday, Sept. 21

Time: 1 - 3 p.m.

Location: Outpatient Oncology Department, 3rd Floor

To RSVP, contact Regina Pettit at 783.6625

Look Good... Feel Better is a free program that helps women look their best during cancer treatment.

It's like a makeover for the spirit. And that's a beautiful thing. To learn more about Look Good... Feel Better or other American Cancer Society programs for patients, call 1-800-227-2345 or visit cancer.org.

ELECTRONICS SHOW

Date: Wednesday, Sept. 9 | 7 a.m. - 4 p.m.

Date: Thursday, Sept. 10 | 7 a.m. - 3 p.m.

Location: Café D

**Computers · Gaming Consoles · TV's
Cameras · Music Players · and More!**

Apple - Beats - Sony - Nintendo - Kindle - Fitbit
Michael Kors & Fossil Watches and many more items!

Payroll Deduction, Cash, Credit Cards



222 Medical Circle • Morehead, KY 40351



St. Claire Regional is a sponsored ministry of the

Sisters of Notre Dame
Covington Province

NEWSBRIEF

Have an article or event to submit for the Newsbrief?

Please send articles and/or information to be placed in the SCR Newsbrief to michael.ash@st-claire.org

Visit the SCR web site at www.st-claire.org/newsbrief to read past editions of the SCR Newsbrief

Need a Camera to Cover a SCR Event?

The Marketing/PR Dept. has several cameras available for loan.

Contact Hannah Conn at ext. 6927 for more information.

