

St. Claire Regional Medical Center

NEWSBRIEF

SCR Patient Safety Heroes	2	SCR Sponsors MSU vs EKU Game	6
Randy McCleese, New CHIME Board Member	4	Outstanding Performance Bedside Medication Verification	8

Randy McCleese,

→ Top 100 CIO's to Know

Randy McCleese, CHCIO, FCHIME, FHIMSS, SCR's VP of Information Services and CIO, is listed in "Becker's Hospital Review 100 Hospital and Health System CIO's to Know". The purpose is to recognize some of the most innovative and accomplished CIOs of hospitals and health systems across the country. Making this list is a huge honor and achievement. Becker's Hospital Review editorial team chooses who is on this list by reviewing the CIO's awards and their hospital or health system performance. Randy's profile was rated high enough to be considered among the most innovative and accomplished CIO's in the country. Randy is the newly appointed Board Chair of the College of Healthcare Information Management Executives (CHIME) (*See pg. 4*). Congratulations Randy from everyone at SCR for receiving such a well deserved honor of achievement.



Randy McCleese, CHCIO, FCHIME, FHIMSS, SCR's VP of Information Services and CIO

YOU CAN SEE THE FULL LIST ONLINE BY GOING TO
www.prweb.com/releases/2014/01/prweb11494810

November and December

Patient Safety Heroes

Submitted by Mindy Morris-Sexton

Courtney Hollingsworth, BSN, RN, Nurse Manager Cardiology Services/Diagnostic Imaging/ICU and Phelan Bailey, RN, Nurse Manager Emergency Department have been selected as the Kentucky Hospital Engagement Network's (K-HEN) Patient Safety Heroes for the months of November and December 2013.

The award is given to individuals that have performed at a high level of accountability and have been instrumental in one or more of the following areas:

- Uncovered new methods of quality improvement and patient safety
- Trained staff member(s) on the importance of patient safety
- Prevented harm from a patient at risk
- Other improvement activities that deserve recognition

Donna Meador, K-HEN Project Director, presented the awards during a reception held on January 15, 2014 at St. Claire Regional. Courtney received the award for her work with the Fall Prevention Campaign. Phelan received the award for his project regarding early recognition of Sepsis. Several members of St. Claire Regional's Leadership group, Management Forum, and members of Courtney and Phelan's families, were there to share in the celebration. Congratulations to both Courtney and Phelan for their success and hard work!



Courtney Hollingsworth, Nurse Manager Cardiology Services/Diagnostic Imaging/ICU; Donna Meador, K-HEN Project Director and Lerae Wilson, VP Patient Services/CNO



Phelan Bailey, Nurse Manager Emergency Department; Donna Meador, K-HEN Project Director and Lerae Wilson, VP Patient Services/CNO



*a lady never tells.
And neither will we.*

At St. Claire Regional Women's Imaging & Aesthetics, we understand that a beautiful woman is full of mystery and intrigue, never revealing her innermost secrets. And we want to keep it that way. That's why when you walk through our doors -- whether it's for Sclerotherapy, Botox®, Latisse®, Juvéderm® or one of our diagnostic imaging services -- you can rest assured discretion is always top of mind.

Our skilled aestheticians provide the latest therapies to erase the years of stress life throws our way. **Call or stop by to schedule your FREE consultation and see how we can help take you from now to "wow."**

606.783.6760

Located on first floor of St. Claire Regional Medical Center
Gift certificates available

.....

Special Kick-Off Pricing

Special Pricing Valid February 3 - February 28

BOTOX[®] Cosmetic -- BUY 20 units,
onabotulinumtoxinA GET 5 units free

Juvéderm[®] ULTRA PLUS XC **Latisse[®]**
dermatoprostaglandin analog *dermatoprostaglandin analog*

10% off Latisse[®], Juvederm Ultra[®] and Juvederm Ultra Plus[®]

.....

WOMEN'S IMAGING
& AESTHETICS



Randy McCleese

New CHIME Board Chair

Randy McCleese, CHCIO, FCHIME, FHIMSS, SCR's VP of Information Services and CIO, is now Board Chair of the College of Healthcare Information Management Executives (CHIME). CHIME is a multi-national healthcare organization dedicated to serving CIO's and other IT leaders and helping those in the field collaborate. He has been in CHIME since 1998 and has held nine positions within the organization before becoming board chair.

Randy was announced as the new board chair in the January-February edition of CHIME's magazine, "CIO Connection." The article was called Q&A with 2014 Board Chairman, Randy McCleese. In the article, Randy addresses many questions about CHIME, his new role with the organization and his views on the healthcare CIO profession. The first question McCleese addresses in the article is, what he would like to accomplish as chair?

"The healthcare industry is undergoing tremendous change. I want to make sure CHIME stays at the forefront and ensures that healthcare information technology is implemented effectively. At the same time, CHIME is also undergoing significant change and I look forward to leading the organization through the challenges facing us in the next year," said McCleese.

Randy McCleese,
CHCIO, FCHIME,
FHIMSS, SCR's VP of
Information Services
and CIO

Congratulations to Randy McCleese for being such an accomplished leader in the healthcare industry.

READ THE ENTIRE ARTICLE BY GOING TO
<http://www.cio-chime.org/cioconnection/january172014/index.html>

You're invited!

Join us in celebration for:

Thelma Johnson

Thelma is retiring with **32 Years** of
dedicated service.

Where: St. Claire Regional Cafeteria
222 Medical Circle, Morehead, KY 40351

When: February 21, 2014 from 2- 4 p.m.



**St. Claire Regional
Medical Center**

SCR SPONSORS

MSU vs EKU GAME

St. Claire Regional once again sponsored the MSU vs EKU double header basketball game which was held on January 11. As a part of this sponsorship, SCR provided 200 SCR staff members with 2 tickets each to the game and FREE MSU/SCR t-shirts were handed out to the first 500 people to attend. An additional 100 shirts were thrown into the crowd by MSU cheerleaders.

At the game, SCR had two tables set up at the front entrance marketing both CRSS Sports Medicine and SCR Family Medical Supply (FMS). Dr. Ched Crouse and Jamie Carver from CRSS Sports Medicine were present to speak to Eagle fans and pass out brochures and marketing cards about their services. Family Medical Supply also offered brochures filled with information on their products and a raffle for 4 twenty-five dollar gift certificates, but the main focus of FMS's marketing came during the third media time-out of the men's game.

As a part of the MSU game sponsorship, SCR marketing provided fan entertainment by hosting fun games during



both the men's and women's basketball games. During half-time of the women's game was a "Surgeon Dress and Shoot" contest. Four Eagle fan competitors were asked to dress in scrubs, hats, gloves and surgical masks and then run to the opposite end of the court and make a basket.

Fans laughed-out-loud as they watched the contestants struggle to quickly get dressed like surgeons and race for the first basket. The second competition occurred during the third media time-out of the men's game. This contest was "Which FMS mobile device is faster? The scooter vs powered chair?" Two brave Eagle fans raced across the court with a basketball in hand. The competitors had to race from one end of the court and back and then make a basket while on their powered mobile device. And, just to let you know, the power chair won the contest.

SCR's MSU game sponsorship is always a lot of fun and is a great way for SCR to market directly to our community. Any suggestions for future MSU game sponsorships are always welcome, email your ideas to valerie.campbell@st-claire.org.



St. Claire Regional
Medical Center



St. Claire Regional
FAMILY
MEDICAL SUPPLY



Cave Run
Sports Medicine
St. Claire Medical Group

Scrub SALE

MARCH
5 & 6

7:00 A.M. TO
7:00 P.M.

CAFES
C & D

SCRUBS

Landau • Smitten • Koi
Wonder Wink • Urbane
Orange • Ecko

SHOES:

Sanita • Brooks
Smitten

DIAGNOSTICS

Prestige • MDF
Littmann

**25%
OFF**

*EVERY Regularly
Priced Item*

Including Scrub Tops & Pants,
Diagnostic Tools, Shoes
& Accessories



50% OFF
& \$5.00
SCRUB BINS



Landau

urbane scrubs



St. Claire Regional
**FAMILY
MEDICAL** **SUPPLY**

Located just off I-64 at Morehead Exit 137 Kroger Shopping Center across from LOWE'S

For more information contact
Kimberle Mullins at Kimberle.Mullins@st-claire.org

606.784.2414 | 1.877.784.2414

Monday - Friday | 8 am - 6 pm

Saturday | 10 am - 2 pm

YOUR MEDICAL SUPPLIES



St. Claire Regional's **Family Medical Supply** is Now Offering **FREE Home Delivery** for the following medical supplies:

- Intermittent Catheters
- In and Out Catheters
- Ostomy Supplies
- Feeding Tube Supplies
- Gloves



Located just off I-64 at Morehead Exit 137 Kroger Shopping Center across from LOWE'S

606.784.2414
or 1.877.784.2414

Monday - Friday | 8 am - 6 pm
Saturday | 10 am - 2 pm

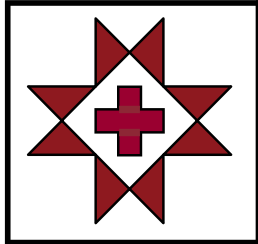
Outstanding Performance in Bedside Medication Verification

Submitted by Don Carpenter

The St. Claire Regional's Bedside Medication Verification (BMV) team would like to acknowledge the outstanding performance from everybody utilizing the bedside medication verification. Our scanning rates continue to climb and help increase our patient's safety here at SCR. Our scanning rates for medications and patients are reaching 97% and 98% respectively. These are fantastic rates and as we move forward into different areas of the hospital we continue to have great success due to the individual initiatives given by all the care givers. We want to recognize the top 3 staff members from the fourth quarter of 2013.

1st Place 100% Scan Rate	Tamera Crager 6th Center Nursing
2nd Place 99.95% Scan Rate	Kasey Lambert 3 Center Nursing
3rd Place 99.87% Scan Rate	Chanette Kiser ICU Nursing

These individuals have helped to ensure the safest patient care possible here at SCR and we invite you all to join us in congratulating them on their tremendous efforts. If you would like to contact the BMV team you can email us at BMV@st.claire.org.



SCR Staff Notice

Infection Control Standards

Due to the recent influx of Influenza in our region we want to remind all SCR staff to carefully follow all infection control practices.

Droplet Precautions are implemented for patients with suspected or confirmed influenza.

While patient is in the healthcare facility Droplet Precautions remain in effect for 7 days after illness onset or until 24 hours after the resolution of fever (without fever-reducing medications) and respiratory symptoms, whichever is longer.

Patient placement in a private room: when a single patient room is not available, consultation with infection control is recommended for possibility of cohorting patients.

Staff are required to don a facemask upon entering the patient's room. Remove the facemask when leaving patient's room, dispose of facemask in waste container and perform **hand hygiene**.

Hand Hygiene:

- Before and after patient contact or contact with the patient's environment, after removal of gloves or PPE. Hand Hygiene can be performed by use of soap and water or alcohol-based handrub. When hands are visibly soiled use soap and water.

During Aerosol-Generating Procedures:

- Staff are to adhere to standard precautions, including wearing gloves, a gown, and either a face shield that fully covers the front and side of the face or goggles.
- Staff are to wear N95 mask
- Family and visitors are not to be present during aerosol-generating procedures
- After aerosol-generating procedure environmental surface cleaning is required

If patients under Droplet Precautions requires movement or transport outside of the room:

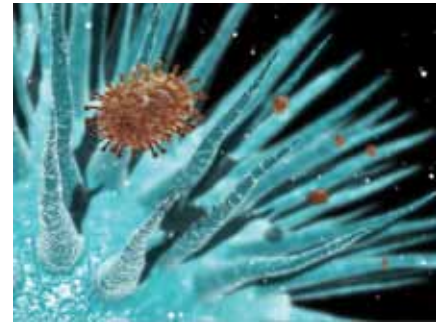
- Have patient wear a facemask, if possible and follow respiratory hygiene and cough etiquette and hand hygiene.
- Communicate with appropriate personnel before transferring patients to other departments in the hospital of suspected, probable, or confirmed influenza patient

Patients treated with antivirals still require the above mentioned guidelines during their hospital stay.

Modes of Transmission:

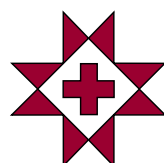
- Large-particle respiratory droplet transmission within 6 feet of patient
- Indirect contact transmission via hand transfer of influenza virus from virus-contaminated surfaces or objects to mucosal surfaces of the face (nose, mouth, eyes)
- All respiratory secretions and bodily fluids are potentially infectious

cdc.gov



Flu Virus: Spreading potentially lethal pathogens, influenza virus particles (brown) invade cilia (blue) in the airways of the human lung.

Image by Karsten Schneider/Science Photo Library



**St. Claire Regional
Medical Center**

ST. CLAIRE REGIONAL WELCOMES NEW STAFF

John Charles Atkins
Infusion Solutions

Jessica Dawn Ballard
Infusion Solutions

Emily Rebekah Caskey
Patient Access

Erica R. Coffee
Environmental Services

Michael Wade Collins
MMS Clinical Services

Brittany Nicole Cord
Behavioral Health Unit

Andrea Corrine Corkran
Clinical Nutrition

Susan Marie Craig
Behavioral Health Unit

Mary Anne Crum
Home Health

Mary Elizabeth Dailey
Patient Access

Denise Djassayor
Food Services

Helen Marie Donathan
Environmental Services

Cairee Ann Fannin
3rd Floor Central

Veronica Nicole Fannin
4th Floor Nursing

Megan Lea Gross
Physical Therapy

Sylvia Lynn Hedge
PACU

Eva Lisa Helton
MMS Clinical Services

Kenneth Sean Hensley
Physical Therapy

Elizabeth Marie Hobbs
Infusion Solutions

Lauren Nicole Holbrook
Float Dept - Unit Sec

Michelle Renae Howard
3rd Floor North

Karan Louise Jackson
Environmental Services

Wendy M Jarrett
Human Resources

Heidi Elaine Kerns
ICU

Beth A Lambert
Cave Run General Surgery

Miranda Lynn McClanahan
Float Dept - Unit Sec

Garrett Meredith McGuire
Infusion Solutions

Gannett Paul Monk
Infusion Solutions

Gregory Allan Nichols
Infusion Solutions

Corey Blake Pritchard
Emergency Department

Irene R Rooney
Anesthesia Professionals

Ronald Christopher Salyers
AHEC

Heather Nichole Schoulthies
4th Floor Nursing

Ada Susan Smith
Behavioral Health Unit

Jennifer Hope Stacy-Bonot
3rd Floor Central

Mary Lou Webb
Surgery

Harper M. Wells
Patient Access

Aleisha Noele White
Nursing Administration

Sharon Kaye Williams
Emergency Department

Galen Patrick Withrow
Security Services

Chase Nathanael Yarman
Laboratory



UPCOMING C.E. Programs

February 7 | Tumor Board

7:30 - 9:00 AM

TC Conference Room

Credit: ACPE, Category 1 AMA

February 11 | Morbidity & Mortality

8:00 - 9:00 AM

SCR Education Room

Credit: Category 1 AMA

February 11 | BLS Check Off

1:00 - 4:00 PM

CHER 102C

RSVP with KaSandra Hensley at ext. 6830 or

KNStone@st-claire.org

February 14 | NeKY RHIO Meaningful Use Survival Seminar

7:30 AM - 12:00 PM

Maysville Conference Center

Credit: Category 1 AMA

February 21 | Tumor Board

8:00 - 9:00 AM

TC Conference Room

Credit: ACPE, Category 1 AMA

February 21 | ACLS Renewal

8:00 AM - 4:30 PM

CHER 102D

RSVP with KaSandra Hensley at ext. 6830 or

KNStone@st-claire.org

February 28 | PALS Renewal

8:00 AM - 4:30 PM

CHER 102D

RSVP with KaSandra Hensley at ext. 6830 or

KNStone@st-claire.org

Spring SCRUBS

Now in Stock

*Come check out
our New Collections
At St. Claire Regional's
Family Medical Supply*

*New
50% Off
Markdowns*



St. Claire Regional
FAMILY MEDICAL SUPPLY

Located just off I-64 at Morehead Exit 137 Kroger Shopping Center across from LOWE'S

606.784.2414 | 1.877.784.2414

Monday - Friday | 8 am - 6 pm

Saturday | 10 am - 2 pm

For more information
contact Kimberle Mullins at
Kimberle.Mullins@st-claire.org



**St. Claire Regional
Medical Center**

222 Medical Circle • Morehead, KY 40351

Valentine Basket Auction & Bake Sale!

Date: Wednesday, February 7

Location: Café Room B

Time: 9 a.m. – 2 p.m.

For more information, contact
Danette Fyffe at ext. 5231
or Danette.Fyffe@st-claire.org



Meaningful Use Survival Seminar

Date: Friday, February 14

Location: French Quarter Inn | Maysville, KY

Time: 7:30 a.m. - Noon

Register online at <http://goo.gl/aGra1d>
or call NEKY RHIO at 1-855-385-2089
Maximum of 3.75 AMA PRA Category 1 Credit(s)

Family Medical Supply Scrub Sale

Date: Wednesday, March 5
and Thursday, March 6

Location: Cafe's C & D

Time: 7 a.m. – 7 p.m.

For more information, contact
Kimberle Mullins at 606.784.2414
or Kimberle.Mullins@st-claire.org



Have an article or event to submit for the Newsbrief?

St. Claire Regional Medical Center
NEWSBRIEF

Please send articles and/or information
to be placed in the SCR Newsbrief to
nick.bear@st-claire.org.

Visit the SCR web site at
www.st-claire.org/newsbrief to read
past editions of the SCR Newsbrief

NEED A CAMERA TO COVER A SCR EVENT?



The Marketing/PR Dept. has several cameras
available for loan. Contact ext. 6419 for more
information.