

St. Claire Regional Medical Center

# NEWSBRIEF

St. Claire Foundation Mystery Dinner Theater  
Alzheimer's Research Study

3  
4-5

SCR Welcomes New Staff  
C.E. Programs August

6  
7

## St. Claire Regional Shares Mission and Services with Visiting Sisters of Notre Dame



(Standing l to r) Sr. Maria Otmara Hemler, Sr. Maria Christina Drees, Sr. Maria Elisabeth Siegbert, Sr. Maria Elke Baumann, Sr. Maria Raphaeli Herberholt, Sr. Mary Margaret Agnes Hemmerle and Sr. Mary Joell Overman

St. Claire Regional recently shared how the hospital lives its mission with Sisters of Notre Dame from Germany and Rome. The international Sisters toured the hospital as part of their visit with the Sisters of Notre Dame Covington Province. The day at SCR was one of many stops on a month long tour of United States provinces including Los Angeles, CA; Covington, KY; Cleveland and Toledo, OH.

During their visit, SCR Leadership team members shared key information about the hospital's history, services and service region. Tom Lewis and Charlotte Lewis led the group on tours of the hospital and Center for Health, Education and Research following lunch.

The group of six visitors included retired social workers and teachers from the Coesfeld Province in Germany, the Secretary General from the Rome Province and a guide from the Covington Province. The Coesfeld Province holds special reverence as the founding congregation of Sisters of Notre Dame.

The Sisters of Notre Dame Covington Province have sponsored St. Claire Regional Medical Center since its opening in 1963. The medical center is one of many ministries supported by the Covington Province, others include the Uganda East Africa Mission and education programs throughout northern Kentucky. The Sisters of Notre Dame worldwide support a variety ministries in five continents and more than 20 provinces. To learn more about the ministries of the Sisters of Notre Dame visit [www.snd1.org](http://www.snd1.org).



CHECK OUT THE SCR NEWSBRIEF ONLINE AT [www.st-claire.org/newsbrief](http://www.st-claire.org/newsbrief)

# Betty Sanchez

## Recognized for Dedication as a Volunteer



submitted by: Regina Thompson

Betty Sanchez, SCR Auxiliary member, was recently honored by the Gateway Retired Senior Volunteer Program (RSVP) at their Volunteer Appreciation Dinner on July 16.

Betty has volunteered over 10,000 hours for RSVP, primarily at SCR. In addition to her award, Betty also received her 15 year pin. Many other SCR volunteers were honored for years of service for the appreciation dinner. Ada Botts, Charlotte Cox, Ann Fiel, and Thelma Johnson each received pins recognizing their 15 years of service. Receiving 10 years of service pins were Bonnie Bennett, Margaret Hamm, Margarete Partin, and Phyllis Roberts.

SCR is thankful to have so many dedicated volunteers. To learn about volunteering opportunities please contact Thelma Johnson 783-6517.

## Look Good...Feel Better

### It's like a makeover for the spirit.

Look Good...Feel Better is a free program that helps women look their best during cancer treatment. At Look Good...Feel Better sessions, experienced cosmetologists teach cancer patients beauty tips to help minimize the appearance-related side effects of chemotherapy and radiation. Good makeup application and a wig or turban can bring back your former appearance or create an entirely new one. In looking better, you'll experience renewed self-confidence and self-esteem.

It's like a makeover for the spirit. And that's a beautiful thing. To learn more about Look Good...Feel Better or other American Cancer Society programs for patients, call 1-800-227-2345 or visit [cancer.org](http://cancer.org).

**Wednesday, August 15**  
**1:00 p.m. - 3:00 p.m.**

**St. Claire Regional-Main Campus**  
**1st Floor Women's Imaging Center**  
**To RSVP, call: Risa Roe at 606.783.6760**



Look Good...Feel Better.



Personal Care Products Council Foundation



# St. Claire Foundation Mystery Dinner Theater Benefits TCU

submitted by: Tom Lewis

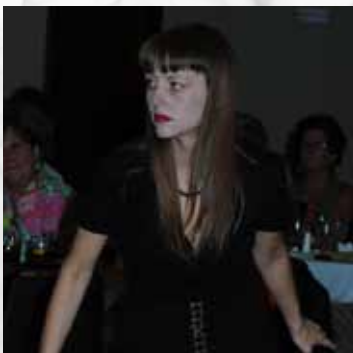
Murder. Mayhem. Superstitions.  
A touch of the supernatural.  
Amazing food. A great crowd.  
And a wonderful cause.

Those were the ingredients that made the fifth-annual St. Claire Foundation Mystery Dinner Theater, "The Curse of Devil's Gulch", a memorable evening ... knock on wood.

More than 100 people took part in the event on Friday the 13th of July at MSU's Adron Doran University Center. The event raised approximately \$10,000 to enhance St. Claire Regional's elder-care services through the remodeling of the Transitional Care Unit.



The cast of "The Curse of Devil's Gulch" (seated l to r) Shayla Menville, Dee Hamm and Lesley Lewis. (standing l to r) Matthew Rand, Jeff Lewis, Shea Poynter, Jason Allen and Tom Lewis.



The mysterious Ingrid Gates (Dee Hamm) glares at guests.



SCR President/CEO Mark J. Neff is forced to undulate around the room after being placed in a hypnotic trance.



Catfight! Grace Peabody (Lesley Lewis) takes offense when the mayor's wife, Helena Washington (Shea Poynter), suggests that she should leave Devil's Gulch.

# 265,000 Kentuckians are uncompensated Alzheimer's caregivers *Their Story is Important*

## Participate in a Research Study Focused on Alzheimer's/Dementia Caregivers

St. Claire Regional Memory Disorders Clinic and the Rowan County Caring & Sharing Support Group are participating in a research study focused on Alzheimer's caregivers in eastern Kentucky. Individuals wishing to take part in the research program can simply fill out a short questionnaire.

Individuals who care for loved ones with Alzheimer's/dementia are encouraged to attend the Rowan County Caring & Sharing Support Group. The group meets the first Monday of each month at 6:00 p.m. at the Center for Health, Education and Research (316 West Second St., Morehead) in room 102.

### Rowan County Caring & Sharing Support Group

**2012 Schedule:** August 6 • September 3  
October 1 • November 5 • December 3

**2013 Schedule:** January 7 • February 4 • March 4



For more information regarding the research study contact David Gross 606.783.6468

For more information regarding the SCR Memory Disorders Clinic or Support Group contact Mary Horsley 606.783.6476

St. Claire Regional is partnering with the University of Kentucky Center for Clinical and Translational Science to complete the research study. The first 100 participants receive a stipend.

# St. Claire Regional Hospice CAMP SMILE PROVIDES WEEK OF HEALING AND FUN



submitted by: Robin Franklin

St. Claire Regional Camp SMILE (Sharing Memories In A Loving Environment), a week long bereavement camp focused on helping children understand and accept the loss of loved ones, recently helped 31 children from the area. The importance of the camp is illustrated by an 8 year-old camper who explained, “Remembering Daddy sometimes makes me sad, but it makes me happy too.”

The campers participated in various counseling activities such as games, crafts and groups. These activities helped them explore, understand and cope with their recent loss and work through questions related to feelings and memories. In addition, the campers enjoyed fun filled afternoons swimming at Morehead State University.

“It is always an intense week; it was sad, it was hopeful and it was rewarding. It is rewarding to share their journey, be part of the process and provide an environment for healing,” said Melanie Hurst, MSW, social worker, St. Claire Regional Hospice and Palliative Care.

St. Claire Regional Hospice and Palliative Care works closely with MSU Nursing Department to provide Camp SMILE each year at no charge to participate. Thanks to the generous support this year each camper attended the camp free of charge, enjoyed afternoon swimming and was given a camp t-shirt and grief workbooks to take home. St. Claire Regional appreciates the many who participated in the yard sale, adopt-a-camper and raffle drawing fund-raising activities. As always, the support of fellow St. Claire Regional co-worker is an essential part of the success of the camp each year.

For more information on how to support or participate in next year’s St. Claire Regional Camp SMILE call (606) 783-6812.

# Nursing Leadership PROGRAM

An Overview of the  
Kentucky Board of Nursing Laws  
& the Kentucky Board of Nursing

**August 29, 2012**  
8:30 a.m. - 4:00 p.m.

**Center for Health Education  
& Research**  
Room 102 D

Approved by the Kentucky Board of  
Nursing for 7.2 Contact Hours

**For more information contact:  
Kassandra Stone at (606) 783-6830**

St. Claire Regional

# Welcomes New Staff

Anne C. Parada  
*Pharmacy*

Catherine L. Schwab  
*OPCC*

Christina Hatfield  
*Pharmacy*

Donna L. Raper  
*Family Medicine*

Elinor R. Nichols  
*3N*

Erika E. Hunt  
*Morehead Medical Specialists*

Kayla J. Kelley  
*Infusion Solutions*

Krista M. Childers  
*Rehabilitation Services*

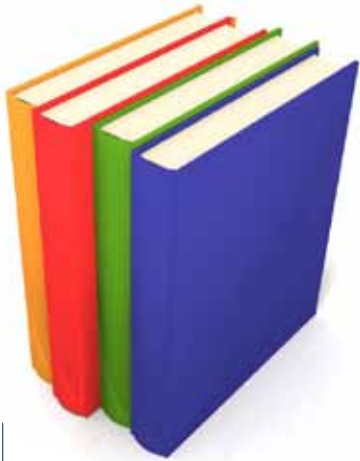
Misty D. Back  
*Nursing Administration*

Patricia C. Bentley  
*Infusion Solutions*

Thea K. McDavid  
*Women's Care*

Thomas J. Carver  
*Cave Run Surgical Specialists*

Whitney F. Jamison  
*ICU*



# UPCOMING C.E. Programs

**August 1 | Journal Club**

8:00-9:00 AM,  
SCR Education Room  
Credit: Category 1 AMA

**August 3 | Tumor Board**

8:30-9:00 AM,  
SCR TeleCare Conference Room  
Credit: ACPE, Category 1 AMA, Nursing

**August 7 | Ostomy Care**

9:00-11:00 AM & 1:00-3:00 PM,  
CHER 310  
Credit: Nursing  
RSVP with KaSandra Stone at ext. 6830 or  
KNStone@st-claire.org

**August 9 | Ostomy Care**

8:00-10:00 AM & 12:00-2:00 PM,  
CHER 310  
Credit: Nursing  
RSVP with KaSandra Stone at ext. 6830 or  
KNStone@st-claire.org

**August 14 | Morbidity and Mortality**

8:00-9:00 AM,  
SCR Education Room,  
Credit: Category 1 AMA

**August 15 | BLS Check Off**

1:00 - 4:00 PM,  
CHER 102ABC  
RSVP with KaSandra Stone at ext. 6830 or  
KNStone@st-claire.org

**August 16 | CPI Class: Non-Violent Crisis Intervention**

8:00 AM - 3:00 PM,  
CHER 102ABC  
Credit: Nursing  
RSVP with Mary Staton at ext. 6664 or  
MRStaton@st-claire.org

**August 17 | Tumor Board**

8:00 - 9:00 AM,  
SCR TeleCare Conference Room  
Credit: ACPE, Category 1 AMA

**August 29 | Nursing Leadership Program**

8:30 AM - 4:00 PM,  
CHER 102  
Credit: Nursing  
RSVP with KaSandra Stone at ext. 6830 or  
KNStone@st-claire.org

**August 30 & 31 | ACLS Healthcare Provider**

9:00 AM - 4:30 PM,  
CHER 102  
Credit: Nursing, Category 1 CME  
RSVP with KaSandra Stone at ext. 6830 or  
KNStone@st-claire.org

## *Look Good...Feel Better Program*

**Date:** August 15

**Time:** 1:00 p.m. to 3:00 p.m.

**Location:** St. Claire Regional Women's Imaging Center

To RSVP call (606) 783-6760

## *Rowan County Sharing and Caring Alzheimer's Support Group*

**Date:** Monday, August 6

**Time:** 6:00 p.m.

**Location:** Center for Health Education & Research,  
Room 102-C

For additional information, contact Mary Horsley,  
(606) 783-6476

## *Family Medical Supply Scrub Sale*

**Date and Time:** August 23 and 24  
7:00 a.m. to 6:00 p.m.

August 25  
7:00 a.m. to 4:00 p.m.

**Location:** Café D

25% Off Regular Price Items • 50% Off Previous Scrub  
Collections • \$5 Bins • \$90 Sanitas

For additional information call (606) 784-2414



222 Medical Circle • Morehead, KY 40351

Have an article  
or event to submit  
for the Newsbrief?

St. Claire Regional Medical Center  
**NEWSBRIEF**

Please send articles and/or information  
to be placed in the SCR Newsbrief to  
[jrobinson@st-claire.org](mailto:jrobinson@st-claire.org).

Visit the SCR website at  
[www.st-claire.org/newsbrief](http://www.st-claire.org/newsbrief) to read  
past editions of the SCR Newsbrief.

NEED A CAMERA TO  
COVER A SCR EVENT?



The Marketing/PR Dept. has several cameras  
available for loan. Contact ext. 6419 for more  
information.