

Dr. Clayton is Moving to SCR Outpatient Center	5
SCR Welcomes New Hires	9
Sarah Jane Howard Receives Ora L. Cline Award	10
Upcoming C.E. Programs	11

THURSDAY, JUNE 1, 2011

## The Joan Wells Nursing Excellence Award

submitted by: Mindy Morris

The Joan Wells Nursing Excellence Award serves as tangible recognition of the countless and vital contributions nurses make in support of furthering the mission of St. Claire Regional in the areas of patient care, teaching, research and public service. This year two outstanding nurses were the recipients of the \$1,000 monetary reward.

Award winner, Loyal Lewis, is a registered nurse for SCR HomeCare and has been a SCR staff member for 29 years. Evelyn Harr, also awarded, is a registered nurse on 3 North and has been a SCR staff member for 30 years.

The winners were selected from 10 nominees, representing various areas of care throughout the medical center. Each nominee received a \$250 reward in recognition of their hard work and dedication. This year's winners and nominees, along with one invited guest, are also invited to attend the annual Kentucky Nursing Excellence Recognition Banquet held in Louisville, KY. *(continued pg 2)*



Evelyn Harr, RN



Loyal Lewis, RN

## The Joan Wells Nursing Excellence Award

*(continued from pg 1)* Every year prior to the annual Nurses' Week Celebration each nursing unit is encouraged to nominate one registered nurse for recognition who exemplifies the following criteria: demonstrates excellence in clinical nursing practice; exhibits special qualities of caring and compassion; expresses a commitment to the teaching of nursing students and health care professionals and demonstrates a dedication to lifelong learning and professional development.

Congratulations to each nominee and our two winners this year!



Erika Jent  
3 Central



Sarah Brown  
4th Floor



Carolyn Hardeman  
TCU/IRU



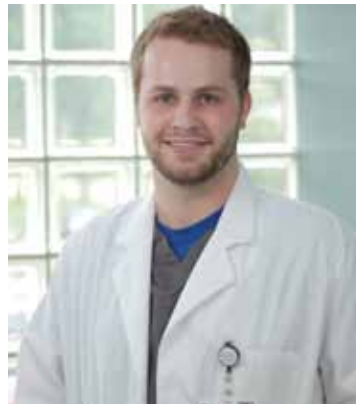
Bonnie Bausch  
OPCC



Lori Crouch  
Family Medicine



Gene Dehart  
Mental Health Unit



Phelan Bailey  
Emergency Department



Barb Corbin  
ICU

# SCR Conducted a **CODE YELLOW** Disaster Drill



Greg Bausch, VP/Chief Operations Officer, served as the Incident Commander and Donna Besant served as HICS Recorder during the disaster drill.



Nursing staff on 5th floor practice emergency evacuation techniques during the disaster drill by using one another for stand-in patients.

On May 18, St. Claire Regional (SCR) conducted a Code Yellow disaster drill to test response and preparedness in the event of a natural disaster or emergency. The drill was conducted in conjunction with a national level, week-long disaster exercise organized by the Central U.S. Earthquake Consortium. SCR was called to actively participate during day 3 of the drill. SCR was given a 7.7 magnitude earthquake scenario, which had allegedly occurred along the New Madrid Fault. SCR received communication from Kentucky Emergency Management officials detailing the situation and notifying SCR that 150 – 200 patients would be transferred to the region. All medical centers were requested to assess their patient capacity and their capability to establish alternate care sites for additional patients.

As the on-call administrator, Dr. Greg Bausch, Vice President/Chief Operations Officer, fulfilled the responsibilities of Incident Commander. The Hospital Incident Command System (HICS) team worked quickly to gather information on patient census, clinical staff availability and on-hand supplies. Local alternate care sites were identified and SCR staff members along with Morehead-Rowan County EMS personnel conducted patient evacuation exercises.

Bausch stated that this was a very good drill and that he felt SCR section and unit leaders had managed the scenario provided by emergency management very effectively.

SCR conducts disaster drills regularly to insure steps are outlined and working efficiently in the case of an emergency situation. Following each drill a debriefing session identifies areas of success and those where actions can be streamlined. More information about SCR's disaster plan can be found on SCR's intranet under Administration > Disaster Plan.

# “Letters From Home” Recognition Dinner

submitted by: [Julie Stephens](#)

May 3rd, 2011 marked the 10th Annual “Letters From Home” recognition dinner. The Northeast Area Health Education Center (AHEC) recognized 25 individuals from our region who have been accepted into medical school. These students will be attending University of Kentucky College of Medicine, University of Louisville School of Medicine, Pikeville College School of Osteopathic Medicine, Marshall University School of Medicine or Lincoln Memorial University School of Osteopathic Medicine in the fall.

In the program, Dr. Brandy Fouch from Mt. Sterling Pediatrics provided the students “words of inspiration” as they begin their journey in medical school. SCR Medical staff and other physicians from the Northeast AHEC region provided insight and advice to students to guide them in their educational experience. The evening ended with each individual student being recognized and presented with a personalized medical dictionary.

The “Letters From Home” program is a mechanism for staying in touch with students during their medical education



Left to Right Back Row: Matthew Whittaker, Erin Adams, Joey Wilder, Brittany Moore, Josie Maione  
Left to Right Front Row: Courtney Cundiff, Andrea Breaux, Nicholas Collins, Courtney Speck, Joshua Bryant

through dinners at the colleges, quarterly emails and mailing updates. This provides encouragement for them to

return back home for clinical rotations as well as return to practice when they complete their education.



The new wall color helps provide patients a calm environment.



New televisions help lengthy oncology treatments pass by.

## SCR Oncology Renovations

submitted by: [Libby Fannin](#)

When patients are facing difficult challenges, we want to promote a warm, caring and safe environment. As a result of generous giving, patients are enjoying more comfortable beds, reupholstered recliners, flat screen TVs, freshly painted walls and new décor.

The oncology staff, along with Dr. Lim, express their deepest appreciation for improvements in the oncology unit.

Thank you SCR and faithful supporters of St. Claire Foundation and Oncology Fund. Your support demonstrates your deep commitment to our work and

to the patients who benefit from our services. We also want to thank our environmental staff, who work diligently to keep the unit looking nice and clean.

There is no way to fully express our gratitude for your loyalty. We, the Oncology staff, are inspired by the dedication and generosity of those who answer the call for improvement, to better meet the needs of our patients, families, and visitors.

# Open House & Free Health Screening

## at St. Claire Regional Outpatient Center

submitted by: Regina Thompson

St. Claire Regional Outpatient Center offered an Open House and Free Community Health Screening on May 2, 2011. Those who attended enjoyed refreshments, door prizes and tours of the state-of-the-art facility.

Participants had an opportunity to receive a variety of health screenings including: balance and posture in the physical therapy department; a complete sleep health assessment in the SCR Sleep Center. In the advanced wound care department ankle-brachial indexes were offered and skin lesion evaluations were provided by Shelly Irving, PA-C and Peggy Ballard, PA-C. Dr. Clarence Clayton also offered private consultations for those who had questions or concerns about their feet.

Other screenings offered were blood glucose and cholesterol levels, blood pressure, pulse and oxygenation checks. Samples of HMR food products were available as well as information on the SCR Weight Management Program. SCR Family Medical Supply also provided sample styles of new therapeutic footwear and assessed feet for orthotic needs.

Thanks to all who volunteered and to the community for supporting the successful event.



SCR Diagnostic Imaging provides a ABI screening to test for peripheral arterial disease



Dr. Clayton, SCR podiatrist, examines a participant's foot.



Clarence Clayton, DPM

## Dr. Clarence Clayton Moves to SCR Outpatient Center June 6

Beginning June 6, Dr. Clarence Clayton, SCR podiatrist and foot surgeon, will see patients at the SCR Outpatient Center. Patients can schedule appointments for Monday afternoons, Tuesday and Wednesday. Dr. Clayton will continue to see patients the first Wednesday of each month at SCR Family Medicine—Olive Hill.

For more information or to schedule an appointment please call (606) 783-6950.

SCR Emergency Department participates in

# April Arrive Alive: Mock Crash

at Rowan County Senior High School

submitted by: [Regina Thompson](#)

Mock Crash is a massive community collaboration with Rowan County Senior High School (RCSHS) and other community resources to teach teenagers an important life lesson before it happens to one of them. The Mock Crash event is a pre-prom activity to demonstrate that if you are intoxicated, you or someone you love could be hurt or killed in an accident.

In the recreation, two wrecked cars were placed in student parking. Several RCSHS students portrayed victims and were strewn about the crash site. While the student body walked outside to view the mock crashed cars the Rowan County Sheriff's Office, Kentucky State Police, Morehead and MSU Police, Fire Department, Coroner's Office, PHI and EMS arrived at the school.

One student, Clay Johnson, played an intoxicated driver. As he saw the police in the distance, he started tossing beer bottles and cans out of the vehicle "to hide evidence". One prom guest, played by Chase Messer, laid motionless on the trunk of the car. Chase Messer's, "lifeless" body was covered by a body bag and placed inside the Coroner's van. He would not attend this year's prom.

Officers give Clay a field sobriety

test, which he failed. The officer cuffed and placed him in the cruiser to take him to jail as he watched his friends try to survive.

The elaborate simulation included use of hydraulic 'jaws-of-life' to pry open vehicles to remove injured students. Student actors were transported from the scene. Hailey McCormick was life flighted from the scene by PHI, Evan Lowe, Josh Kazee and Traci Stevens were transferred to the mock SCR emergency room in the RCSHS Gym. Traci Stevens died from injuries sustained in the mock crash. Evan Lowe was also life flighted from mock SCR ER and Josh Kazee was treated and released. Traci Stevens' mother, played by Krista Hayslip, arrived at the mock SCR ER, to hear the staff tell her Traci died as a result of the injuries she sustained in the DUI accident. It was an extremely emotional time and was described by one attendee "you could have heard a pin drop in a gym with hundreds of kids in it".

Carol Turner, Youth Service Center Coordinator at RCSHS stated "This year was the best yet, students and faculty alike are still talking about this event. Thank you to the SCR staff for making Mock Crash even more realistic".



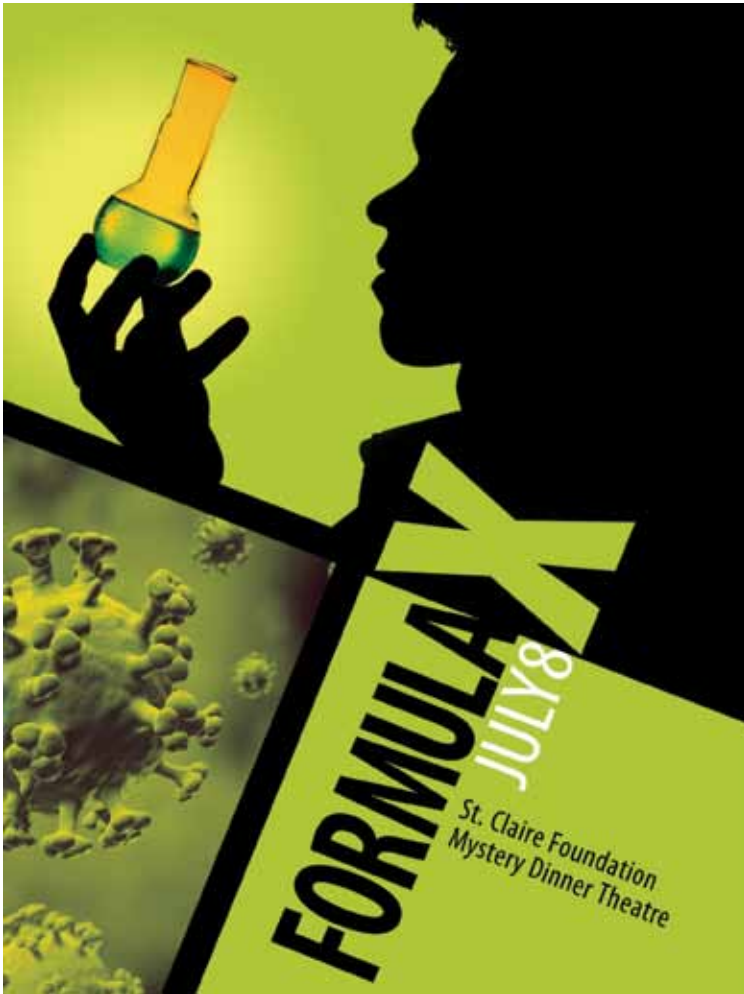
The Mock Crash staged two wrecked cars in student parking and several RCSHS students portrayed victims at the crash site.



SCR emergency department staff set up a mock emergency department and treated 'crash victims' in RCSHS gymnasium



Dr. Caren Daniels; Nick Hammonds, RN, Dir. Of Critical Care Services; Amander Hester, RN; Janet Helvey, ED Tech; Timmy Smallwood, ED Tech; MSU Nursing Students treat patients during the Mock Crash at RCSHS.



## St. Claire Foundation Signature Event

July 8 • 6:30 p.m.

Everyone is invited to attend the 2011 St. Claire Foundation Signature Event. This year the Mystery Dinner Theater will perform "Formula X" and proceeds will assist with completion of St. Claire Regional's new Women's Imaging Center.

Individual general admission seats are \$100 per seat and "Friends of St. Claire" tables with preferred seating for eight people are \$1,000 per table

To purchase your tickets or for more information please contact, Tom Lewis at 783-6511.

## Construction Update



Renovations to accommodate the new Women's Imaging Center are nearing completion and digital mammography equipment is scheduled to arrive and be installed on June 13.



Although the new cardiac catheterization lab will not be used at full capacity for another month, procedures are now being performed in the new area when needed.

# SCR HomeCare Celebrates 40th Anniversary

St. Claire Regional (SCR) HomeCare has been a leading provider of home health services including nursing, rehabilitation and personal care since 1971. Over the past 40 years, SCR HomeCare has taken the mission of SCR – to proclaim God’s goodness through a healing ministry to the people of eastern Kentucky – directly to patient’s homes. Just three counties were served when SCR began home health services, but today SCR HomeCare proudly serves more than 600 patients across an 8 county service region which includes Bath, Carter, Elliott, Fleming, Lewis, Menifee, Montgomery, and Rowan counties.

SCR’s HomeCare is dedicated to working with patients, their families, physicians and home health caregivers to speed recovery from illness or injury and avoid unnecessary

hospitalization. Personalized care plans are made for each patient based on their individual needs and trained staff provides care, instruction and support to family members.

“The role of any home health agency is to assist the patient in reaching their highest level of independence,” says Carolyn Taylor, SCR HomeCare director. “However, our dedicated home health professionals take special pride in caring for our patients because they are also our neighbors.”

SCR HomeCare is licensed and certified by Medicare and Medicaid as well as accredited by the Joint Commission. For more information on SCR HomeCare services please contact (606) 784-8403 or visit [www.st-claire.org](http://www.st-claire.org).



St. Claire Home Care nurse, Cindy McKenzie, pictured with patient Kaylan Hunt are enjoying some time together following a routine home health visit.



Maddeline Beddow the patient seated. Standing to her side from left to right: Marsha Horsley, home health aide and Debbie Blankenship, RN.



Betty Burton the patient seated. In the back from left to right: Melanie Barker, RN, Tammy Helton, RH and Pina Perry, Home Health Aide.



# SCR Works to Improve Patient Care

submitted by: Lerae Wilson, RN

Improvements were recently made in nursing to better align services, improve SCR processes and create a seamless continuum of care for our patients.



Nick Hammond, RN

Nick Hammonds, RN, was recently named Director of Critical Care Services for SCR. Nick will now oversee nursing care in the emergency department, intensive care unit, nursing components of the cardiac catheterization lab and the pre and post catheterization areas.

Nick brings 13 years of nursing experience to his new role, including experience as a med/surg and emergency department nurse, nursing coordinator, as well as 7 years as a flight nurse for PHI. Nick has proven to be a vital asset to SCR and will help improve the standard of care provided to our patients.

In addition, Courtney Hollingsworth, BSN, RN, has been promoted to Nurse Manager. Courtney will supervise nursing care in radiology, heart catheterization and vascular lab, and the pre and post catheterization area.



Courtney Hollingsworth, RN

Please welcome Nick and Courtney to their new roles at SCR.

## St. Claire Regional *Welcomes* NEW STAFF

Jennifer C. Akers  
Home Health

Karen H. Allen  
MMS Administration

Jennifer L. Bellamy  
TCU

McKenna Rhea Conley  
Float Dept - Unit Sec

Sarah A. Flynn  
Emergency Department

Angela M. Forman  
Radiology

Carrie J. Gross  
Cardiology

Melisa Ann Kennedy  
Nursing Administration

Keri Louise Knoeferl  
Nursing Administration

Sherry S. Lyons  
Home Health

Mikia Sue Madden  
Surgery/Same Day Surgery

Kayla R. Miller  
Emergency Department

Shannon L. Moore  
Home Health

Savanna T. Moore  
Nursing Administration

Latoshia Nicole Morris  
Cave Run General Surgery

Nora Michelle Rudd  
Patient Access

Leah Karen Sargent  
Mental Health Unit

Charlotte L. Spencer  
Environmental Services

Laken L. Stevens  
Patient Access

Justin Welch  
Family Medical Supply

Tia E. Wells  
Nursing Administration

# Sarah Jane Howard Receives 2011 Ora L. Cline Award



Dr. Kimberly William, SCR VP of Special Projects and Chamber of President; Sarah Jane Howard holding the Ora L. Cline Award and son of the late Ora Cline.



Sarah Jane Howard working with volunteer staff at the People's Clinic in Morehead.

Sarah Jane Howard, director of the People's Clinic, recently received the 2011 Ora L. Cline Award at the Morehead-Rowan County Chamber of Commerce annual banquet. Sarah Jane has spent over 40 years serving our community's medical needs.

She began her career at St. Claire Hospital in 1971. After joining the Morehead Clinic in 1976, she helped Dr. Richard Carpenter develop a cardiac rehabilitation program for patients. In 1999, the cardiac rehab program was moved to St. Claire Regional and Sarah Jane continued to serve as director. Sarah's empathy for patients help cultivate their desire to stick with the rehabilitation process.

After serving cardiac patients for close to 30 years Sarah began to consider retirement. It was at this time that Dr. Enawgaw Mehari shared his vision

of providing free healthcare for the uninsured of Rowan County. In 2005, the People's Clinic opened its doors with an all-volunteer staff and Sarah Jane serving as director. The clinic is open one day a week from 10:00 am - 7:00 pm and provides a variety of services including dentistry. To date the People's Clinic has served over 2,000 patients.

The Ora L. Cline Award is the most prestigious award designated by the chamber. It is presented to a caring, supportive, community-minded person with perseverance and patience that has helped make our community a better place to live, work and visit.

## SCR Staff Members Graduate from Morehead-Rowan County Chamber of Commerce Leadership Academy

Debbie Neff, PT and Julie Stephens, AHEC student services coordinator, recently graduated from the Morehead-Rowan County Chamber of Commerce Leadership Academy.

The Chamber of Commerce Leadership Academy is designed to promote and develop informed business and

community leaders among citizens of Morehead and Rowan County. The program gives emerging leaders an inside view of Morehead and Rowan County. Through fast-paced sessions, participants explore issues with key decision makers, develop a network of contacts and join the fast track to effective community

service. Participants are introduced to community experts as well as the most compelling issues that face our city and county today.

Each class of 12 selected participants, which represent a large cross-section of the community, attend full-day programs each month from September through May.



Debbie Neff, PT



Julie Stephens

For more information on the Leadership Academy please contact Tracy Williams at (606) 784-6221.



# Northeast AHEC UPCOMING C.E. Programs

**FATHER'S DAY**  
June 6 - June 18

*Special*

**\$529<sup>99</sup>**  
MSRP: \$740<sup>00</sup>  
Pride® Model: LC-105  
Color: Cocoa

**SAVE 20%**  
All Lift Chairs\*  
\* including custom orders

- Over 20 models available (many models in stock)
- 5 size options including XXL
- Over 40 fabric color options
- Heat and massage available
- Lifetime manufacturer warranty on PRIDE® lift mechanism

**FREE DELIVERY**  
Within a 50 mile radius

Visit Our Store for Many Great Gifts for Dad!

Register to win a FREE Father's Day Gift Basket (\$50 value)

**BIOFREEZE**  
BUY ONE  
GET ONE  
**\$2 off**

Back & Joint  
Pain Relief

**REACHING AIDS**  
**10% off**  
Plus FREE Shoe Horn  
with purchase

Reach or pick up virtually anything without straining your back, hands or knees

**20% off SHOES**

Aetrex • Brooks • Landau • Orthofeet

Certified therapeutic shoe fitters on staff to provide the best shoe to fit your need.

**STORE HOURS**  
Monday - Friday 8:00 am - 5:00 pm  
Saturday 10:00 am - 2:00 pm

St. Claire Regional  
**FAMILY MEDICAL SUPPLY**  
Kroger Shopping Center across from LOWE'S

- JUNE 16**      **ACLS Instructor Course**  
9:00 am - 4:30 pm  
CHER Building  
RSVP with Loretta Burchett at ext. 6830 or laburchett@st-claire.org
- JUNE 24**      **CHF Update**  
presented by Dr. Weaver  
12:00 pm - 1:00 pm  
CHER Building  
RSVP with Brian Buelterman at ext. 6453 or blbuelterman@st-claire.org
- JULY 8**        **ACLS Renewal**  
9:00 am - 4:30 pm  
CHER Building  
RSVP with Loretta Burchett at ext. 6830 or laburchett@st-claire.org
- JULY 27**      **SCR Multidisciplinary Case Conference**  
presented by Dr. Weaver  
12:00 pm - 1:00 pm  
SCR Café D  
RSVP with Brian Buelterman at ext. 6453 or blbuelterman@st-claire.org
- JULY 27 & 28**      **ALSO Course**  
CHER Building  
7:45 am - 4:00 pm  
RSVP with Loretta Burchett at ext. 6830 or laburchett@st-claire.org

## *Step Out Diabetes Walk*

**Date:** June 4

**Location:** Keeneland Race Track,  
Lexington, KY

SCR will be participating in the event, if you are interested in joining the team contact Sherry Adkins at 606.783.6702

## *Diabetes Support Group*

**Date:** June 14

**Location:** Clinical Nutrition Department  
SCR Second Floor

This month the discussion will focus on "Traveling with Diabetes". For more information please contact 606.783.6702

## *Relay for Life — Rowan County*

**Date:** June 25

**Location:** McBayer Elementary School

**Time:** 6:30 p.m.

For more information on SCR sponsored health screening event or to participate on the SCR team please contact, Regina Thompson at ext 6859

## *FMS Father's Day Sale*

**Date:** June 6 - June 18

**Location:** SCR Family Medical Supply

**Open:** M - F 8:00 p.m. - 5:00  
Saturday 10:00 am - 2:00 pm

Visit the store for many great gifts for Dad.



222 Medical Circle • Morehead, KY 40351



## NEED A CAMERA TO COVER AN EVENT?

The Marketing/PR Dept. has several cameras available for loan. Contact ext. 6419 for more information.

Please send articles and/or information to be placed in the SCR Newsbrief to [jlrobinson@st-claire.org](mailto:jlrobinson@st-claire.org).

NEXT DEADLINE: June 7