

St. Claire Regional Medical Center NEWSBRIEF

SCR Welcomes RPLP Class of 2013	2	SCR Welcomes New Staff	7
SCR Staff Discounts	2	SCR Continuing Education Events	8

Randy McCleese, SCR Chief Information Officer, Featured in Healthleaders Media Magazine

St. Claire Regional's Chief Information Officer, Randy McCleese, was recently featured in a series of articles discussing the many aspects of implementing a health information exchange in the September 2011 edition of HealthLeaders magazine. An excerpt from the article "HIEs: So Many Choices, So Many Questions" from page 48 is below.

HIEs: So Many Choices, So Many Questions

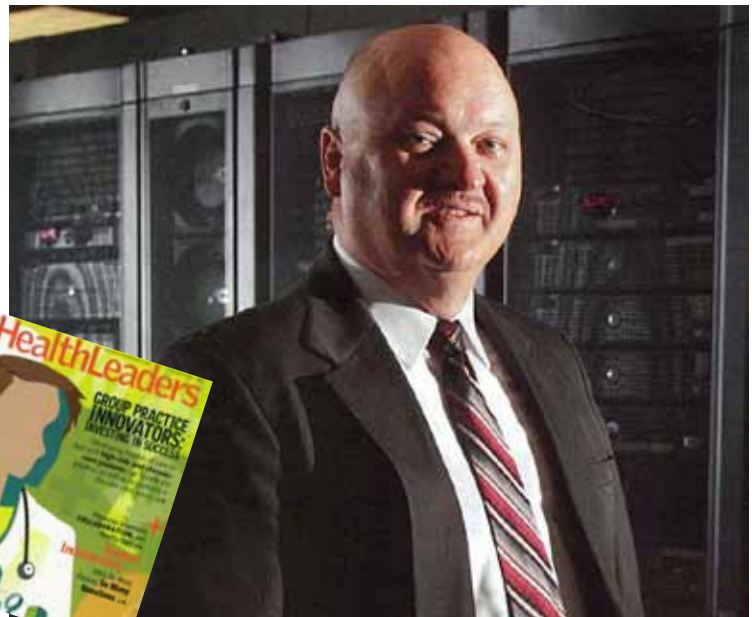
There are different models for health information exchanges and each comes with pros and cons that leaders must consider.

The cost and benefits of joining a health information exchange is not entirely clear yet, partly because there are several business models to choose from and no one knows for sure which will emerge as the winning choice. Even so, chances are good you may have to make a decision soon.

HIEs are sprouting up fast, says Randy McCleese, FHIMSS, CHCIO, vice president of information systems and CIO at St. Claire Regional, Morehead, KY. McCleese was a member of the work group that developed the guidelines for the regional extension centers

that offer technical assistance, guidance, and information on best practices to support healthcare providers' efforts to become meaningful users of electronic health records. McCleese also is on the board of directors of the Northeast Kentucky Regional Health Information Organization, a nonprofit that works with the Kentucky HIE.

Essentially a way for providers to share patient information efficiently and securely, the goal of an HIE is promoting the improvement of health quality, safety and efficiency through



the adoption of electronic health records. Unfortunately, a significant number of the HIEs across the country will not achieve long-term viability because they lack a sustainable business model, McCleese says. There are three models for HIEs, different in the way they store patient data:

- Centralized, in which patient data is stored in a central depository.
- Decentralized or federated, which provides organizational control of the health care record and provides the framework for data sharing capability, but the data is

not stored centrally.

- Hybrid, a cross between a centralized and decentralized architecture, which provides an interface engine for providers in the HIE to communicate. Patient data may be physically stored and managed in a central location, but it's separated so that it is controlled only by the organization contributing the data.

The Kentucky HIE is a decentralized or federated system.

SCR Welcomes New RPLP Class

submitted by Julie Stephens

On August 1, 2011, the UK College of Medicine Rural Physician Leadership Program (RPLP), in collaboration with St. Claire Regional (SCR) and Morehead State University, welcomed seven new students to the Morehead area. The RPLP is designed to increase the number of physicians who will address the shortage of physicians in the rural areas of the Commonwealth.

The students spent their first two years of medical school at UK's main campus in Lexington for basic science education with the rest of the medical students. They will complete

their last two years of medical school, their clinical years, at the Morehead satellite campus. They will primarily spend their time at SCR, but will also use the Northeast AHEC's community-based faculty to aid in clinical education. While completing their final two years in Morehead they will also attend classes at Morehead State University College of Business and Public Affairs for a curriculum based on community health.

RPLP CLASS OF 2013:

Nathan Hudson
Hometown: South Shore, KY



(left to right) Crystal Norgren, Katrina Winkler, Shea Poynter, Nathan Hudson, Miranda Smith, Lesley Jackson, Katherine Johnson

Shea Poynter
Hometown: Cave City, KY

Lesley Jackson
Hometown: Lexington, KY

Miranda Smith
Hometown: Sandy Hook, KY

Katherine Johnson
Hometown: Summerville, SC

Katrina Winkler
Hometown: Richmond, KY

Crystal Norgren
Hometown: Boulder, CO

New Nurse Managers Named for 3North and 3Center

submitted by LaRae Wilson, RN



Selena Mynhier, RN, 3Center Nurse Manager and Charlene Blevins, RN, 3North Nurse Manager.

It is my pleasure to announce that Charlene Blevins, R.N. has accepted the position of Nurse Manager for 3North and Selena Mynhier has accepted the position of Nurse Manager for 3Center. Charlene has been at SCR for 15 years. Charlene began her career at SCR as an LPN on 3Center in 1996. She furthered her professional development by attaining a Registered Nurse degree from Morehead State University in 2005. Charlene served as a Nursing Coordinator with SCR from 2006 to 2008 and most recently has been a charge nurse in the ICU. Charlene began serving in her new role Tuesday, September 6th.

Selena Mynhier, R.N., has been a PRN staff nurse in the SCR Emergency Department since 2007. Along with her ED experience, Selena also has ICU and Telemetry experience, as well as experience working in a Trauma 1 Center in Orlando, Florida. She currently works full time at Central Baptist where she serves as a charge nurse. Selena began serving in her new role Monday, September 19th.

UK
UNIVERSITY OF
KENTUCKY
College of Health Sciences
PHYSICIAN ASSISTANT PROGRAM



STAFF DISCOUNTS

- ✓ Sam's Club
- ✓ Cell Phone Carriers
- ✓ Local Restaurants
- ✓ Gym Memberships and more!

Find a full list of new SCR STAFF DISCOUNTS on the SCR Intranet

www.mc.uky.edu/healthsciences
An Equal Opportunity University

National Physician Assistants Week
October 6-12

submitted by Drema Perkins

St. Claire Regional Family Medicine would like to recognize the Family Medicine Physician Assistants for their service and dedication to our patients.



Andy Edie, PA-C



Kimberly Bromagen, PA-C

St. Claire Regional Hospice A “We Honor Veterans” Partner

submitted by: Robin Franklin

It may surprise many people to learn that 25 percent of those who die every year in the U.S. are Veterans. To help provide care and support that reflect the important contributions made by these men and women, St. Claire Regional Hospice has become a national partner of We Honor Veterans, a pioneering campaign developed by National Hospice and Palliative Care Organization in collaboration with the Department of Veterans Affairs.

As a We Honor Veterans Partner, St. Claire Regional Hospice will implement ongoing Veteran-centered education for their staff and volunteers to help improve the care they provide to the Veterans they proudly serve. The nation is seeing many of the Veterans who served in World War II and Korea pass away—and the number of deaths of Vietnam Veterans is beginning to rise.

By recognizing the unique needs of our Veterans who are facing a life-limiting illness, St. Claire Regional Hospice is better able to accompany and guide Veterans and their families toward a more

peaceful ending. And in cases where there might be some specific needs related to the Veteran’s military service, combat experience or other traumatic events, St. Claire Regional Hospice will find tools to help support those they are caring for.

“All hospices are serving Veterans but often aren’t aware of that person’s service in the armed forces,” said J. Donald Schumacher, NHPCO president and CEO. “Through We Honor Veterans we are taking a giant step forward in helping hospice and palliative care providers understand and serve Veterans at the end of life and work more effectively with VA medical facilities in their communities.”

“America’s Veterans have done everything asked of them in their mission to serve our country and we believe it is never too late to give them a hero’s welcome home. Now it is time that we step up, acquire the necessary skills and fulfill our mission to serve these men and women with the dignity they deserve,” says Robin Franklin, Director, St. Claire Regional Hospice.

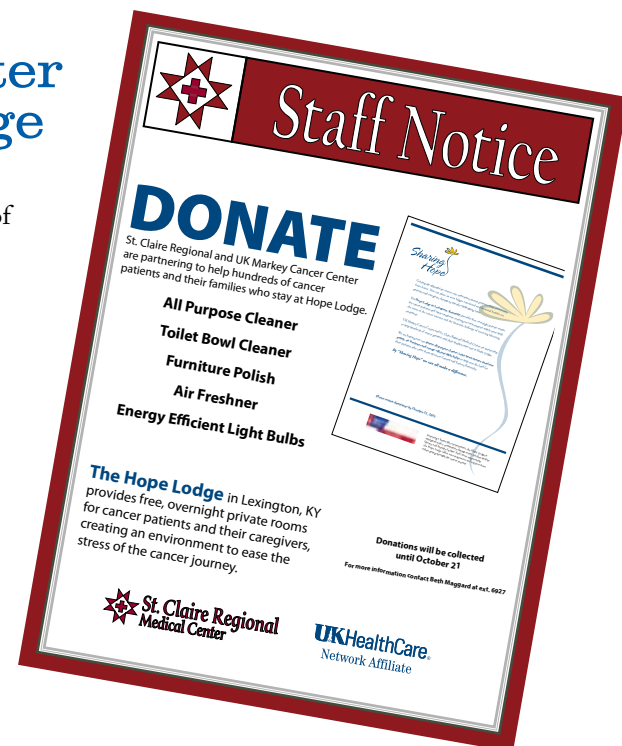


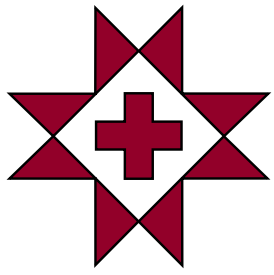
SCR and UK Markey Cancer Center Partner to Support the Hope Lodge

St. Claire Regional and UK Markey Cancer Center are partnering to help hundreds of cancer patients and their families who stay at the Hope Lodge in Lexington, KY. We are collecting janitorial and maintenance items to assist with the daily living needs of the lodge. Specifically we are collecting: All Purpose Cleaner, Toilet Bowl Cleaner, Furniture Polish, Air Freshener and Energy Efficient Light Bulbs. We have placed a collection box at the hospital’s information desk at our main entrance for any donations.

The Hope Lodge provides free, overnight private rooms for cancer patients and their caregivers, creating an environment to ease the stress of the cancer journey. The Hope Lodge accepts patients from central and eastern Kentucky and is easily accessible to all of the outpatient cancer treatment facilities in the Lexington area.

Donations will be collected until October 21, for more information contact Beth Maggard at ext. 6927





St. Claire Regional Medical Center

MEDICAL STAFF OFFICERS 2011-2012



President and Chief of Staff
Amy Conley, MD



Immediate Past President
Stephen D. Damron, MD



Secretary-Treasurer
Charles E. Crouse, MD



Member-at-Large
Craig D. Butler, MD



Department of Surgery,
Chair
O. Thomas Newcomb, MD



Department of Surgery,
Vice-Chair
Syed Ali, MD



Department of Medicine,
Chair
Craig H. Burrows, MD



Department of Medicine,
Vice-Chair
Punnaivanam Ravisankar, MD



Credentials/Bylaws,
Chair
William Lewis, MD

During the Month of October All SCR Women

SCR staff, age 35 and older are eligible to receive one

SCREENING MAMMOGRAM* CO-PAY WAIVER

Waivers are available in SCR Human Resource Department

• This coupon is good for one FREE CO-PAY on a Screening Mammogram only. Any further diagnostic services require payment. *ORIGINAL CERTIFICATES ACCEPTED - NO COPIES*

St. Claire Regional A Gourmet Success at 1st Annual Autumn Arts and Eats Festival



Adam Skirboll prepares seared tuna.



Mike Montes dipping delicious apples in rich caramel



Sister Marge enjoys her gourmet caramel apple



Kimberly Mullins, (left) Dr. Clayton (middle) and Amanda Ramey (right) offer foot health information for 5K runners.

The smell of fall surrounded guests as they walked from booth to booth sampling sweet treats and various art works from the region at the 1st Annual Autumn Arts and Eats festival in Morehead. St. Claire Regional (SCR) participated with a booth set up on the heart of Main Street, aside many other local vendors participating in the festival.

SCR displayed outstanding gourmet talent while gathering an impressive number of ticket sales. Seared tuna, cooked to perfection accompanied gourmet caramel

apples, provided a unique twist on traditional festival treats earning SCR "Best Dessert" and "Best Overall Food." SCR is also proud to announce that we took in approximately 1,087 tickets and received \$125 in prize monies for a grand total of \$1,212. The community showed such support, SCR has decided to give back by donating 100% of their proceeds to Rowan County Christmas.

SCR staff members made this event a huge success by dedicating their time and talent to support the festival. A huge "Thank

You" goes out to Food Services staff Mike Montes, Adam Skirboll, Rebecca Wells and Rico Strode who provided the savory flavors served from the SCR booth. SCR Marketing staff Valerie Campbell, Matt Watts and Gina Thompson distributed hand sanitizers and coloring books to fair patrons.

Dr. Clayton, SCR Podiatrist along with Amanda Ramey and Kim Mullins, SCR Family Medical Supply Sales Representatives, provided valuable information on foot health.

MENTAL ILLNESS AWARENESS WEEK

October 2 - 8, 2011

submitted by: [Julia Neill](#)

October 3-7 is National Mental Illness Awareness Week. The purpose of this event is to increase awareness about mental illness and decrease the stigma often associated with having a mental illness. This week-long event also includes National Depression Screening Day.

According to the Centers for Disease Control and Prevention, depressive disorders affect approximately 18.8 million American adults or about 9.5 percent of the U.S. population in a given year. Depression can manifest differently depending on age, gender and other social factors.

“One of the main myths about depression is that it is normal among certain populations. The truth is that depression isn’t, and shouldn’t be, a normal part of life for anyone, regardless of their situation,” said Julia Neill, LCSW, St. Claire Counseling. “Our screenings help people become more aware of the signs and symptoms of this condition and the importance of seeking help before a problem becomes serious.”

This year, free mental health screenings will be offered to SCR employees through our intranet site. Employees can complete the screening and print out their results to share with either their primary care provider or one of the qualified mental health staff at St. Claire Counseling.

Employee Assistance Program

One benefit available to all SCR staff is our Employee Assistance Program. This program offers mental health and substance abuse services for employees and/or family members. As a staff member, you are entitled to six visits with a mental health therapist at no cost to you. Appointments with a psychiatrist are not included and you will be responsible for your regular co-pay. Many issues can be resolved in six sessions or less. Further services can be provided using your insurance company’s mental health benefits.

Reminder: Please take the opportunity to participate in National Depression Screening Day by going on the SCR Intranet to complete your own screening and score it yourself.

Free Depression Screening on the SCR Intranet

- Access the SCR Intranet
- Click Departments
- Scroll down to St. Claire Counseling
- Click on St. Claire Counseling
- Click National Depression Screening Day (NDSD)
- After Reading Directions Close (NDSD) window
- Under Documents click National Depression Screening Day
- Open NDSD Adult Screening Form and print to complete
- Click NDSD Scoring Instructions for tallying your results.

Please feel free to make a copy of your test and contact St. Claire Counseling at (606)783-6805, if you would like to discuss your results with a therapist.

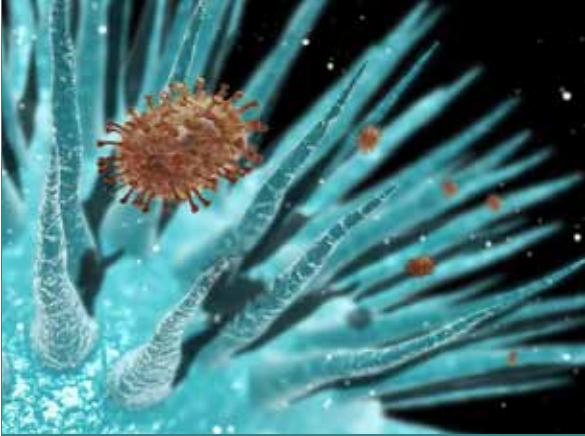
Remember, completing this survey does not take the place of a professional evaluation. As always, suicidal thoughts are considered a psychiatric emergency requiring immediate attention. Please go to your nearest emergency room or contact your healthcare provider if you are having suicidal thoughts.

Mental Illness Changing Attitudes
Awareness Week Changing Lives



October 2-8, 2011

It is once again flu season



Spreading potentially lethal pathogens, influenza virus particles (brown) invade cilia (blue) in the airways of the human lung.

submitted by: Irene Williams,

References: "Take time to get a flu vaccine."

September 15, 2010. Accessed online at www.cdc.gov

Employee Health has started the "Flu Shot Campaign" for all St. Claire Regional staff. All staff receive a flu shot through Employee Health free of charge! You will be seeing Irene Williams, Employee Health Nurse, coming to each floor with the "Flu Shot Cart".

When staff receive their flu shot, they will also receive a gift as a "Thank You" for protecting their patients, their family and their self from the flu. At this time, the staff will also be entered in a drawing to win one of several prizes. This year, the sooner you get your flu shot, the more chances you have of winning a prize.

Remember: Influenza is a contagious respiratory disease that can lead to serious complications, hospitalization, or even death. Anyone can get the flu, including healthy adults and can spread it to family, patients, co-workers, and friends. The best way to protect against influenza is to get a flu vaccine every flu season!

If you have any questions or concerns, notify Irene, Employee Health Nurse, at ext. 6649.

National Housekeeping Week September 11 – 17, 2011.

submitted by: Glenda May

SCR Environmental Services consists of 63 employees. Mike Montes, director, has been with SCR for ten years and David Hatcher, manager, has been with SCR one year. Mike and David are both Aramark employees.

Fifteen of our employees have been with St. Claire Regional over fifteen years; Viola Goodman—33 years; Glenda May—30 years; Retha Davis—21 years; Debbie Griggs and Trella Easterling—19 years; Wanda Pennington—17 years; Shirley Fultz and Debbie James—16 years and Charlie Rister—15 years,

Viola Goodman has been here the longest and Shane Smith is the newest member of our team. We want to welcome Shane aboard and congratulate Viola on her 33 years of dedicated service.

A big "Thank You" goes to the entire staff for the wonderful job they do for St. Claire Regional now and over the years.

In celebration of Environmental Services Week the SCR Environmental Service staff enjoyed a cookout, competed in a cornhole tournament and received a gift of appreciation. Door prizes were won by Alberta Wells and Tina York. The team of Sharon Johnson and Linda Kidd and the team of Anna Ratliff and Amy Stevens won the cornhole tournament. Each winner received a \$25.00 Walmart gift card.



Cornhole tournament winners:



Cornhole tournament winners:



SCR Physicians Evaluate Meditech

Many SCR physicians recently attended an evaluation/education session on Meditech/LSS electronic record. Valuable and informative feedback will continue to make the Meditech transition as smooth as possible.

St. Claire Regional

Welcomes NEW STAFF

Shawn W. Ballard
Nursing Administration

Katayoun Behbahani
Hospitalist Physician

Taylor M. Blakeman
Cave Run General Surgery

Kacie D. Bledsoe
Library

Stephanie D. Corbin
Emergency Department

Jenny L. Curtis
Nursing Administration

Joseph R. Dawson
Environmental Services

Linda K. Gilliam
Environmental Services

April D. Harding
Emergency Department

Joseph A. Hedge
TCU

Dawnita K. Lewis
Podiatry

Allie J. Lyons
Pharmacy

Lisa M. McCreary
Occupational Therapy

Katie L. McLaughlin
Pharmacy

Oscar S. Smith
Environmental Services

Crystal L. Surface
3rd Floor Central

Jaime J. Wagoner
FM - Morehead

Kimberly A. Withrow
FM- Owingsville



Northeast AHEC UPCOMING C.E. Programs

Oct 7 | Tumor Board

7:30 am - 9:00 am

SCR TeleCare Conference Room

Credit: Category 1 AMA, Nursing

Oct 11 | Morbidity and Mortality

8:00 am - 9:00 am

SCR Administrative Board Room

Credit: Category 1 AMA

Oct 11 | Trauma in Pregnancy

12:00 pm - 1:00 pm

CHER 102D

Credit: Nursing, Category 1 AMA

Oct 21 | Tumor Board

8:00 am - 9:00 am

SCR TeleCare Conference Room

Credit: Category 1 AMA, Nursing

Oct 21 | Tumor Board

8:00 am - 9:00 am

St. Clare TeleCare Conference Room

Credit: Category 1 AMA, Nursing

Oct 25 | Emerging Trends in Oral Anticoagulation

12:00 pm - 1:00 pm

CHER Rm102

Credit: ACPE, Category 1 AMA, Nursing

Oct 26 | Multidisciplinary Case Conference

12:30-1:30 PM

CHER 102D

Credit: ACPE, Category 1 AMA, Nursing

RSVP with Brian Buelterman
at ext. 6453 or blbuelterman@st-claire.org

Diabetes Support Group

Date: October 11

Time: 6:00 p.m.

Location: Clinical Nutrition Dept. located on the 2nd floor at SCR

Topic: "Being Prepared for a Disaster When You Have Diabetes"

For more information, call 606-783-6702

Breast Cancer Support Group

Date: October 18 (Every 3rd Tuesday)

Time: 5:30 p.m.

Location: SCR Rm. 266, past the Chapel on the 2nd floor

For more information please contact Judy Ramsey at ext. 6735

Turkey Trot for for a Cure to Support the Alzheimer's Association

Date: November 5

Time: Register - 8:00 am, Race Time - 10:00 am

Location: Morehead City

Early Bird Deadline: Monday, October 17th

T-shirt guaranteed to all who register prior to early deadline!

Early Bird fee Adults: \$20 Kids (4-12): \$10 3 & Under: FREE

Entry Fee after October 18th & Race Day

Adults: \$25 Kids (4-12): \$15

Register Online at

www.surveymonkey.com/s/TurkeyTrot2011



222 Medical Circle • Morehead, KY 40351



NEED A CAMERA TO COVER A SCR EVENT?

The Marketing/PR Dept. has several cameras available for loan. Contact ext. 6419 for more information.

Please send articles and/or information to be placed in the SCR Newsbrief to jilrobinson@st-claire.org.

NEXT DEADLINE: Oct. 11