

GROWING OUR MEDICAL STAFF



Syed Ali, M.D.

St. Claire Regional welcomes Syed Ali, M.D., a board certified Anesthesiologist to our Medical Staff.

Dr. Ali earned his medical degree at Gulbarga University in India. He completed his internship at the University of Kentucky Medical Center and completed his residency and a critical care anesthesiology Fellowship at Washington University Medical Center.

Dr. Ali says that after living and working in and around Lexington, he always wanted to find a smaller community where he could make a difference in people's lives. "Morehead is a place I can see myself fitting in really well. Not only is it family friendly, it offers a wealth of great health care at St. Claire Regional", says Ali.

In Dr. Ali's personal time he enjoys indoor and outdoor activities with his family including cycling, walking and swimming. He also likes to play basketball and tennis.

Please join us in welcoming our new anesthesiologist to St. Claire Regional and our region.



Michael Anstead, M.D., FCCP

Michael Anstead, M.D., FCCP, Pediatric and Adult Pulmonary Medicine physician with UK Healthcare began offering Pediatric Sleep & Pulmonary services at the St. Claire Regional Outpatient Center in May. Dr. Anstead is Board Certified in Internal Medicine, Pediatrics, Pulmonology, Critical Care, and Sleep Medicine.

Dr. Anstead completed his undergraduate degree at the University of Kentucky College of Medicine. He completed his internship and residency in Internal Medicine and Pediatrics at the University of Kentucky College of Medicine where he also served as Chief Resident and completed a Fellowship in Pulmonary and Critical

Care. He has provided care for children and adults with respiratory and sleep problems at the University of Kentucky Medical Center since 1997.

"Working with the St. Claire Regional Sleep Lab is a great opportunity", says Dr. Anstead. "SCR's sleep lab is the only sleep lab in Eastern, KY that is fully accredited and will do sleep studies for younger children and those that may seem medically fragile." Dr. Anstead also says that he enjoys the opportunity to work with SCR providers as well as being able to provide convenience to our communities by seeing patients in Morehead.

Dr. Anstead is now scheduling and accepting new patients at the St. Claire Regional Outpatient Center. To schedule an appointment, or for more information, please call 606-783-6866.

Amazing. Medicine. Close to Home.

ST. CLAIRE REGIONAL WRAPS UP 2010 FUNDRAISING CAMPAIGN WITH NEW RECORD

Submitted by: Tom Lewis

In spite of a struggling economy, St. Claire Regional Medical Center's 2010 Fundraising Campaign still reached a new milestone.

As of June 30 – the end of SCR's fiscal year – the campaign had received more than \$224,000 in gifts and pledges. That was 6.4 percent more than St. Claire Regional's 2009 fundraising campaign received, according to Roger Russell, SCR Vice President of Development.

“Not even the worst economic downturn since the Great Depression could stymie the generosity of our community, our staff, our physicians and our volunteers,” Russell said. “The St. Claire Foundation board and staff are humbled by the commitment to our mission displayed by our supporters.”

The theme for the 2010 SCR campaign was The HeART in Healing. “Our supporters have once again demonstrated the size of their hearts through their unsurpassed giving,” said Susan Victor, who chairs the St. Claire Foundation Annual Support Committee. “To set a new fundraising record this year is nothing short of remarkable, and it's because our supporters are remarkable.”

Russell credited the Annual Support Committee for its leadership in coordinating this year's fundraising campaign.

St. Claire Regional Medical Center is a 159-bed regional referral center with nearly 1,300 employees and a medical staff of nearly 100 physicians representing more than 30 medical specialties. SCR offers a variety of regional services, including five family medicine clinics, an outpatient center in east Morehead, an eight-county home health and hospice program, St. Claire Regional Family Medical Supply in the Morehead Kroger Center and the state's largest clinical telemedicine network site. A not-for-profit hospital, St. Claire Regional is sponsored by the Sisters of Notre Dame in Covington, Ky.

The St. Claire Foundation is the fundraising arm for SCR. To make a contribution to the Foundation, call (606) 783-6512, email Russell at rdRussell@st-claire.org or visit www.st-claire.org and click on the “Foundation” link.



SCR AND MSU STAFF ATTENDED CHER OPEN HOUSE - JULY 9TH



Dr. Humkey gives SCR staff members a guided tour of the new SCR Family Medicine – Morehead facility.



SCR and MSU staff enjoy refreshments in the CHER lobby.

CENTER FOR HEALTH, EDUCATION AND RESEARCH DEDICATION & RIBBON CUTTING CEREMONY

Friday, August 27, 2010

Ceremony 1:00 p.m.

Center for Health, Education and Research



*You're
Invited*

Amish Shadow Quilt Raffle



This quilt was donated by a Hillsboro man in appreciation for the services that St. Claire Regional provided to a member of his family. It is on display in window of the old registration area on the first floor.

Proceeds to benefit the
St. Claire
Charity Care Fund

Tickets: \$1 each or 6 for \$5

**Tickets may be purchased in the SCR Gift Shop or the
St. Claire Foundation House.**

Winner to be drawn on Friday, August 27.

*A message
from []*



ELECTRONIC MEDICAL RECORDS AT SCR – ADVANCING CLINICAL EXCELLENCE

Submitted by: Randy McCleese

This is the first in a series of communications regarding the installation of electronic medical records in the acute care environment at St. Claire Regional. St. Claire Regional began looking at electronic medical records (EMR) several years ago and is now beginning the implementation process.

The federal government has recognized the value of electronic medical records for several years. President George Bush created the Office of the National Coordinator (ONC) for Health Information Technology via an executive order during his State of the Union speech in 2004 when he called for most Americans to have an EMR by 2014. The ONC has been saddled with the responsibility of coordinating the Federal government's healthcare information technology.

President Obama and Congress ramped up the nation's move toward electronic medical records when the American Recovery and Reinvestment Act (ARRA) was passed and signed in February 2009. ARRA contained an

important section known as the Health Information Technology for Economic and Clinical Health (HITECH) act which provided several billion dollars of incentive funding for healthcare to adopt and meaningfully use certified electronic medical records.

The HITECH Act contained explicit language about meaningful use and certification of electronic medical records and required the Department of Health and Human Services Center for Medicaid and Medicare Services (CMS) and the Office of the National Coordinator to propose regulations on these items by the end of 2009. The law contains separate language for hospitals and eligible professionals (non-hospital based physicians, NP's, etc). The two agencies proposed regulations for both areas in December 2009 and the proposals were published in the Federal Register in January 2010 with a provision for a 60-day comment period. After the 60-day period ended in March 2010, the two agencies reviewed more than 2000 comments and proposed the final regulations in July 2010.

HITECH requires healthcare organizations to use EMR's in a manner that allows the healthcare providers to electronically and securely share a patient's record with other providers/hospitals. Additionally, the law requires that quality measures be submitted to governmentally agencies in an electronic format.

Our next communication will focus on the dates associated with the law and the federal government's requirements of healthcare organizations to meet the meaningful use and certification criteria.

If you have any questions regarding the ARRA/HITECH and SCR's response, please contact Randy McCleese at jrmccleese@st-claire.org or (606) 783-6560 or Scott Liley at cslilley@st-claire.org or (606) 783-6411.

HIGHLIGHTING OUR CHAMPIONS

Submitted by: Tracy Stewart

The following comments are from SCR patients that completed our Press Ganey patient satisfaction surveys in June.

You're No. 1; it couldn't have been better.

You have a good hospital and everyone I talked with couldn't have been nicer.

The doctors, staff, nurses and everyone treated us like we wanted to be treated. There's no need for improvement!

The staff at the St. Claire Regional Family Medicine–Frenchburg was very helpful; they are all great!

I'm very satisfied with my doctor (Dr. Alikar); he has done more for me than any other doctor I've ever seen.

My inpatient experience was very good; everything was great. Every person I had contact with was excellent.

Overall, the treatment and service at the hospital were very good.

Everything was great!



SPOTLIGHT – Tom Hedge

Submitted by: Janie Waltz

Tom Hedge is a valuable person at St. Claire Regional. He has been a Materials Management Specialist for 5 years, managing inventory for 3-N and ICU. When you meet him in the hallway he will call you by name and this comes with a smile; as he asks how you are. The more you see of Tom the more you will come to understand how kind and helpful he is. Those that have the privilege to work with him will say “He is always pleasant and caring about his job and his co-workers.”

“Tom is an asset to St. Claire Regional because of his work ethic and kind manner” Thank you Tom for all you do, and who you are!

Now Open EVENINGS & WEEKENDS

SCR Family Medicine specializing in care
for your entire family – *specializing in you.*

The new state-of-the-art SCR Family Medicine
facility located on W. Second Street in the
Center for Health, Education and Research is open

Monday thru Friday

8:00 a.m. - 8:00 p.m.

Saturday

9:00 a.m. - 12:30 p.m.

WALK-IN SERVICE

The SCR Family Medicine
Express service has moved
from Battson's Drug to
the new facility.



 St. Claire Regional
Family Medicine

MOREHEAD

To schedule an appointment
at the Morehead location
call 606.784.3771

AUGUST BIRTHDAYS

Donnie R Berry	Laboratory	8/1	Robin Cox	Infusion Solutions	8/17
Judson Brewer	Primary Care Administration	8/1	Casey Lane James	Food Services	8/17
Becky Lynn Burton	Food Services	8/1	Alisca Rene Musser-Elliott	Physical Therapy	8/17
Georgia Vaughn Ensor	Hospice	8/1			
Carolyn A Moore	FM - Olive Hill	8/1	Lisa Adkins	TCU	8/18
Teresa J Swartz	FM- Owingsville	8/1	Kayla Michelle Gray	Respiratory Therapy	8/18
Donna S Thornsberry	Environmental Services	8/1	Jeffrey Hughes	Sleep Lab	8/18
Gurbir S Dhaliwal	Hospitalist Physician	8/2	Barbara Ann Graham	3rd Floor Central	8/19
Wanda S Porter	Emergency Department	8/2	Ricky D Lewis	Security Services	8/19
Krista Lynn Staton	Float Dept - Unit Sec	8/2	Ashley Pettit	Home Health	8/19
			Greta J Poe	3rd Floor North	8/19
Charlie Matthew Cantrell	Respiratory Therapy	8/3	Stacy Lynn Triplett	Radiology	8/19
Brian Lea	Hospitalist Physician	8/3			
Brandon Charles Adkins	Security Services	8/4	Lisa Johnson	Laboratory	8/20
Kimberly Jean Dagnan	Cave Run General Surgery	8/4	Ashley Orr	3rd Floor North	8/20
Elizabeth Louise Kissinger	Human Resources	8/4	Sheree Dawn Walker	Emergency Department	8/20
Thomas E Lewis	Development	8/4			
Jodie Ann Conn	Homemaker II	8/5	Lee Ann O'Bryan	Radiology	8/21
Cathy C Galloway	Infusion Solutions	8/5	Donna L Sloan	Environmental Services	8/21
Lois J. Vice	Nursing Administration	8/6	Candy Arvizo	FM - Morehead	8/22
			Penny Pyle Littleton	Wound Care/Hyperbaric	8/22
Chelsea Hopson	Marketing and PR	8/7	Blair McKinney	Patient Financial Services	8/22
Lisa N Adkins	Central Billing Office	8/8	Joseph E Easter	Environmental Services	8/23
Kimberly Y Bromagen	FM- Owingsville	8/8	Ashley D Perry	Radiology	8/23
Suanne Stokes Bushong	Radiology Physicians	8/8			
Tammy Renee Hatfield	Outpatient Care Center	8/8	Jay Michael Burton	Cave Run General Surgery	8/24
Carol Lynn Kelsey	ICU	8/8	Rebekah Gibbs	Health Information Management	8/24
Marcia Lynn Nolen	3rd Floor North	8/8	Theresa L Hanshaw	FM - Olive Hill	8/24
Sally C Taylor	Patient Access	8/8	Lori Beth Hylton	Mental Health Unit	8/24
			John C McDavid	Emergency Department	8/24
			Katrina Glen Wallace	SPD	8/24
Lucille K Trimble	FM - Frenchburg	8/9	Matthew G Lewis	Radiology	8/25
			Deborah Lynn Maddix	ICU	8/25
Phelan D. Bailey	Emergency Department	8/10	Carolyn Jean Taylor	Home Health	8/25
Craig H Burrows	FM - Morehead	8/10			
Jeanne F Cleves	Nursing Administration	8/10	Deborah L Griffin	Cave Run General Surgery	8/26
Brenda Kay Evans	FM - Olive Hill	8/10	Evelyn Oney	Environmental Services	8/26
Pina Mae Perry	Homemaker II	8/10	Matilda Ruth Porter	Homemaker II	8/26
			Derrick W. Stowers	Infusion Solutions	8/26
Kimberly Fay Bailey	Surgery/Same Day Surgery	8/11	Francis Sue Weaver	Emergency Department	8/26
Brittany Barker	Patient Access	8/11			
Robin Renae Conley	Hospice	8/11	Donna Marie Besant	Administration	8/27
John Goins	Emergency Department	8/11	Brenda Kay Cundiff	Surgery/Same Day Surgery	8/27
Tabatha Lynn Harmon	Laboratory	8/11	Mamie Doss	Environmental Services	8/27
Erma C Hollingsworth	Outpatient Care Center	8/11	Carrie Emmons	Home Health	8/27
Russell M Ingram	Patient Access	8/11	Lori Ann Gulley	3rd Floor North	8/27
Delena R Peters	Nursing Administration	8/11	Anita Maria Hughes	Home Medical Equipment	8/27
Madgelene D Plank	Homemaker II	8/11	Ronald C Salyers	Information Services	8/27
Rebecca S Stamper	Radiology	8/11	Linda L Tackett	FM - Olive Hill	8/27
			Matthew Ian Watts	Marketing and PR	8/27
Jacqueline R. Durham	Occupational Therapy	8/12			
Diana Lynn Helton	Nursing Administration	8/12	Marsha Lynn Bond	Food Services	8/28
Glenda J May	Environmental Services	8/12	Theresa Marie Burton	Patient Access	8/28
			Regina D Porter	Home Health	8/28
Helen J Boggs	Rehab Unit	8/13	Alberta A Wells	Environmental Services	8/28
Shirley Jean Crawford	Float Dept - Unit Sec	8/13			
Tina Louise Davis	Environmental Services	8/13	Tina J Black	Food Services	8/29
Patricia A Gardner	Laboratory	8/13	Jennie K Crouch	ICU	8/29
James H Hamric	Mental Health Unit	8/13	Rudolph Donald Leue	Surgery/Same Day Surgery	8/29
Rose Marye Prust	Float Dept - Unit Sec	8/13	Kimberle Mullins	Home Medical Equipment	8/29
Raphael Rucker	ICU	8/13	Heather Thompson	3rd Floor North	8/29
Dianna Lynn Trusty	Food Services	8/13	Carolyn F Wells	Mental Health Unit	8/29
Kandi Ginn	Nursing Administration	8/14	Julia Berry Flannery	AHEC	8/30
Rhonda Gale Riley	Float Dept - Unit Sec	8/14	Liegh Ann Moore	Nursing Administration	8/30
Ashley Dawn Thompson	Environmental Services	8/14	Casey Lynn Razor	Radiology	8/30
David A Burns	Pharmacy	8/15	Christy B Moore	TCU	8/31
Pamela A Compton	Homemaker II	8/15	Wilrecus L. Strode	Food Services	8/31
Kara R Skaggs	Nursing Administration	8/15	Alice Michelle Thomas	Laboratory	8/31
			David W Victor	Cave Run General Surgery	8/31
Gregory J Bausch	AHEC	8/16	Mandy S. Webb	3rd Floor Central	8/31
Shalimar Miller	4th Floor Nursing	8/16			
Yvonne O. Taul	4th Floor Nursing	8/16			
Heather B Wilburn	Laboratory	8/16			
Stephen A Williams	Radiology Physicians	8/16			

ST. CLAIRE REGIONAL TCU PATIENT CELEBRATES 94TH BIRTHDAY

Submitted by: TCU

No one wants to be in the hospital on their birthday, but for one St. Claire Regional (SCR) patient being in the hospital didn't hamper the day. On July 16th, Betty Pedrick, celebrated her 94th birthday at a special gathering planned by the Transitional Care Unit staff.

"I'm just glad I made it to 94. I have had the happiest birthday that I could possibly have had while a patient," says Betty, when asked about how she felt about being in the hospital on her special day.

The day before Betty's birthday she told the nursing staff that she wanted to have a big party- complete with karaoke. Her nurse that day, Lisa Earlywine, LPN decided to make the request a reality. Luckily, Lisa, who is also a Zumba instructor, had recently purchased a sound system complete with a karaoke system. "I went home that night and had my husband figure the system out. I came to work early that morning and set it up," Lisa, SCR LPN, said.

Patients receiving rehabilitation on the SCR Transitional Care Unit participate in at least two daily activities and Betty's birthday was no exception. Two additional patients joined in the festivities along with Betty's family and TCU staff. The party goers enjoyed playing BINGO and singing



Betty Pedrick, (front center) celebrates her 94th birthday with TCU staff and her family

some oldies.

"The smile on her face, and the face of everyone involved is why we do what we do", said Carolyn Hardemon, RN.

For more information regarding the St. Claire Regional Inpatient Rehabilitation Unit call, 606-783-6650.

SCR FAMILY MEDICAL SUPPLY LIVE REMOTE BROADCAST DURING OUR ONE-YEAR ANNIVERSARY



Mark J. Neff, SCR President/CEO talks to Jeff Ray with WIVY/WKCA about SCR Family Medical Supply's dedication to healthy living.



Clarence Clayton, DMP talks to Jeff Ray with WIVY/WKCA about foot health during the live remote at SCR Family Medical Supply



2010 Golden Reel Video Contest

SCR is looking for creative teams to produce videos relating to customer service issues and service recovery within their departments. They will be judged, and an awards ceremony for the casts and crews of each project will be held on Oct. 29.



2009 Golden Reel Winner 🎬 **"The Devil Almost Made Me Do It"**
Cast & Crew (L-R): Shirley Crawford, Remona Gooding, Megan Lowe, Holly McGlone, Pam Evans, Kathy Mays, Angela Craft and Madison Craft.

PRIZES

Category winners will be honored at the awards ceremony. The overall winner will receive a trophy and \$500 to split among themselves OR for the in-house cause of their choice.

CATEGORIES

- Drama/Soap Opera
- Comedy
- Reality
- Sci-Fi/Fantasy

REQUIREMENTS

Completed videos must be submitted in MPEG format.

VIDEO CONTENT

Must be rated G or PG and must pertain to customer service. It should run no longer than 15 minutes.

DEADLINE

October 4. (Please submit entries on DVD or jump drive to Janie Waltz in the Patient Representatives Office.)

FOR MORE INFORMATION

Contact Janie Waltz at ext. 6591 or Tom Lewis at ext. 6511.



**St. Claire Regional
Medical Center**

JULY IS INTERNATIONAL GROUP B STREP AWARENESS MONTH

Submitted by: Charlotte Kinney

July is International Group B Strep Awareness Month. Group B Strep (GBS) is the most common cause of sepsis (blood infection) and meningitis (infection of the fluid and lining around the brain) in newborns. GBS is a frequent cause of newborn pneumonia and is more common than other, more well-known, newborn problems such as rubella, congenital syphilis, and spina bifida.

About half of the cases of GBS disease among newborns happen in the first week of life (“early-onset disease”), and most of these cases start a few hours after birth. Sepsis, pneumonia (infection in the lungs), and meningitis (infection of the fluid and lining around the brain) are the most common problems.

Premature babies are more at risk of getting a group B strep infection, but most babies who become sick from GBS are full-term. GBS disease may also develop in infants one week to several months after birth (late-onset disease). Meningitis is more common with late-onset group B strep disease. Only about half of late-onset group B strep disease among newborns comes from a mother who is a group B strep carrier; the source of infection for others with late-onset group B strep disease can be hard to figure out. Late-onset disease is slightly less common than early-onset disease.

Women should get a screening test late in pregnancy to see if they carry group B strep. If the test comes back positive, they should get antibiotics through the vein

(IV) during labor. If a woman has had a previous baby who got sick with group B strep disease, or if they had a urinary tract infection (bladder infection) during this pregnancy caused by group B strep, they also need to get antibiotics through the vein (IV) when labor starts.

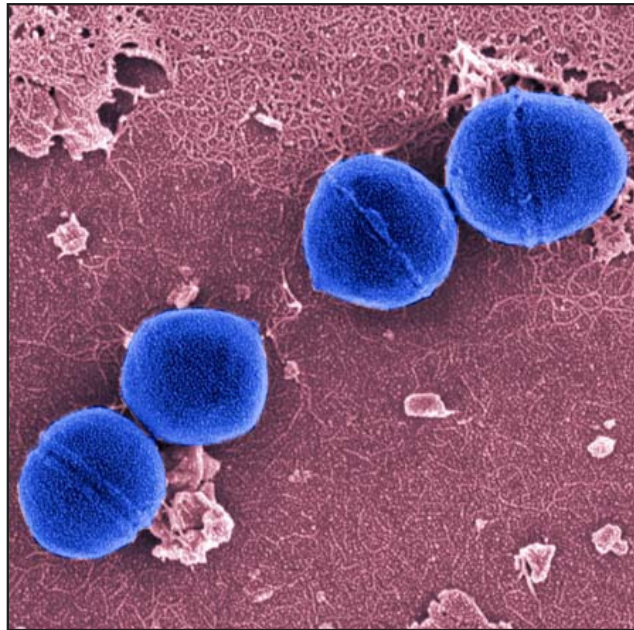
Most pregnant women have no symptoms when they are carriers for group B strep bacteria. Sometimes, group B strep can cause bladder infections during pregnancy or infections in the womb during labor or after delivery.

Being a carrier (testing positive for group B strep, but having no symptoms) is quite common. Around 25% of women may carry the bacteria at any time. This doesn't mean that they have

group B strep disease, but it does mean that they are at higher risk for giving their baby a group B strep infection during birth.

Finding the GBS bacteria does not mean that that a woman is not clean, and it does not mean that they have a sexually transmitted disease. The bacteria are not spread from food, sex, water, or anything that they might have come into contact with. The bacteria can come and go naturally in the body.

Reference: Centers for Disease Control and Prevention





HMR Diets are Affordable and Effective

Losing Weight and Gaining Health Can Help You Save Money!

Save on food costs

The cost of HMR foods along with fruits and vegetables has been found to, on average, reduce dieters' weekly food expenses.

In a recent survey, over 90% of participants on the HMR® Program reported saving money on food while on the diet (HMR Survey, 2008).

"Before HMR, I was on more than 16 medications, including 150 units of insulin a day. After losing weight with HMR, I'm down to just 4 medications, and I'm off my insulin completely. I feel much better and I'm saving over \$3,500 a year on prescriptions."

~ Sam M, lost 125 lbs.*

Save money on medication costs

In a recent published study of 118 HMR patients who lost over 100 lbs. (Am J of Clin Nutr 2007;86:301-307)

- ✓ Medication doses were reduced in all patients
- ✓ 100% of patients on medications for abnormal cholesterol/triglycerides were discontinued
- ✓ 67% of patients on medications for high blood pressure (hypertension) were discontinued
- ✓ 73% of patients on medications for diabetes were discontinued

Prevent medication costs

In a recent study of 351 HMR patients who were pre-hypertensive and lost an average of 37 lbs.

- ✓ 94.3% remained medication-free at follow-up (average 2.7 years)

In a recent study of 175 HMR patients who had pre-diabetes and lost an average of 47 lbs.

- ✓ 98% remained medication-free at follow-up (average 2.6 years)

Real lifestyle change and medically significant weight loss are possible with the HMR Program!

*HMR Program average weight loss

Healthy Solutions® Diet 35-40 lbs.

HMR at Home® program options:

Self-directed diet kits 15-20 lbs.

With weekly phone support 25-30 lbs.

SCR Staff save \$72 on new membership

FREE informational sessions beginning every half hour

July 21st 12:00 p.m. - 4:00 p.m. and July 30th 7:00 a.m. - 12:00 p.m.

Cafe' B



FREE FOOT HEALTH CONSULTATIONS & free health screenings



Clarence Clayton, DPM

Cave Run Surgical Specialists, Podiatrist
will provide FREE foot health consultations
including orthotic & diabetic screening as
well as shoe and insole fitting

ENJOY FREE REFRESHMENTS

Health Screenings

Blood Pressure
Cholesterol
DermaScan Facial Sun Damage
Glucose
Oxygen Saturation Screenings
Pulse Rate



WEDNESDAY
AUGUST 4th

9:00 a.m. - 12:00 p.m.

St. Claire Regional Family Medical Supply
located in the Kroger Shopping Center across from Lowes



Dedicated to Healthy Living

No appointment necessary
For more information please contact,
Amanda Ramey at 606.784.7068

**Amazing • Medicine
Close to Home**

UPCOMING EVENTS

BLOOD CANCER THERAPIES

Presented By: Dr. Hayslip

Date: June 29

Time: Dinner 5:00 p.m. - 5:30 p.m.
Presentation 5:30 p.m. - 8:30 p.m.

Location: SCR Cafe' D

For more information contact Brandi Poskas at
bcposkas@st-claire.org

FREE HEALTH SCREENINGS Healthy Living Series Event

Date: August 4

Time: 9:00 a.m. - 12:00 p.m.

Location: SCR Family Medical Supply

For more information please contact Amanda Ramey at
606.784.2414

CENTER FOR HEALTH, EDUCATION AND RESEARCH DEDICATION AND RIBBON CUTTING

Date & Time: August 27
1:00 p.m.

Location: CHER Building

BOOKS ARE FUN

Date & Time: August 9
9:00 a.m. - 5:00 p.m.

August 10th
7:00 a.m. - 3:00 p.m.

Location: SCR Cafe' A & B

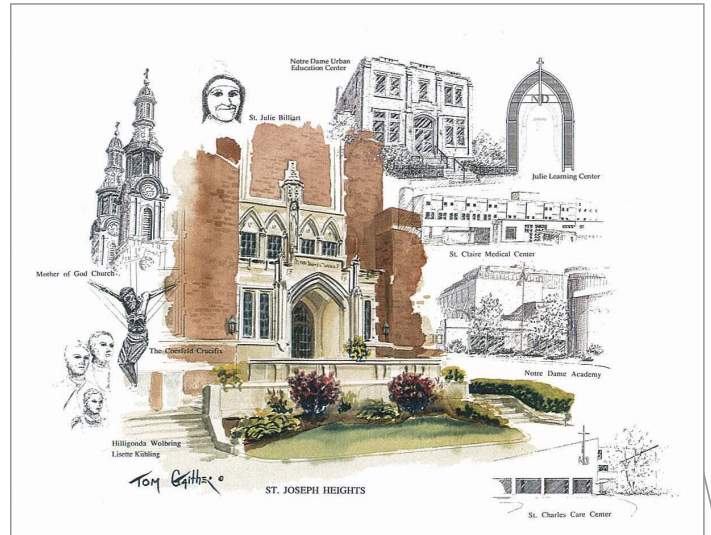
HOME DECOR & PURSE SALE

Date: August 30 - 31

Time: 7:00 a.m. - 6:00 p.m.

Location: SCR Cafe' A & B

SISTERS OF NOTRE DAME THANK SCR FOR HOSPITALITY



Dear Mark, Sister Marge, & Staff,
Wow, what a day we had on Wednesday! You could not have done one more thing to make it such a perfect day. From our welcoming to our departure your kindness and thoughtfulness was so evident. The gourmet lunch, the special presentation, the guided tours of CHER, then more refreshments - all made us feel so special. Your ministry at St. Claire is so vibrant - just like each of you. Your dedication and commitment to the mission at St. Claire is so evident. We are so proud to be partners with you. May our Good God continue to bless what you do for Him and His people.
Blessings to you,
Sister Dennise