

NEWSBRIEF

2018 Foundation Scholarship Recipients..... 2

St. Claire Foundation Annual Golf Outing 3

SCH Retail Pharmacy Benefits for SCH Staff..... 5

Aesthetics One Day Event 6

Matera Recently Named St. Claire Family Medicine Maternity Care Director

Submitted by Cheryl McClain

Elizabeth Matera, MD, was recently appointed St. Claire HealthCare's new Family Medicine Maternity Care Director.

Our strategic plan is to grow St. Claire's obstetric services and continue to strive toward providing an excellent hands-on rural obstetric track for the Family Medicine Residency Program. Key components of this plan are to increase the number of deliveries at St. Claire Regional Medical Center as well as improving collaboration with the UK HealthCare's obstetric program by developing a cohesive team approach in taking care of our patients.

Utilizing our diverse approach with providers from St. Claire Family Medicine, Midwifery and UK OB/GYN, we can deliver a wide variety of care and patient experiences. Individually, these providers deliver great care, but by working as a team we hope to elevate this to excellent patient care and patient experience, making St. Claire the regional choice for deliveries.

Matera has been with St. Claire since 2014 providing family medicine and OB services. She is enthusiastic about women's care, and will be working closely with all members of SCH obstetric services, while continuing to provide family medicine services in Olive Hill.

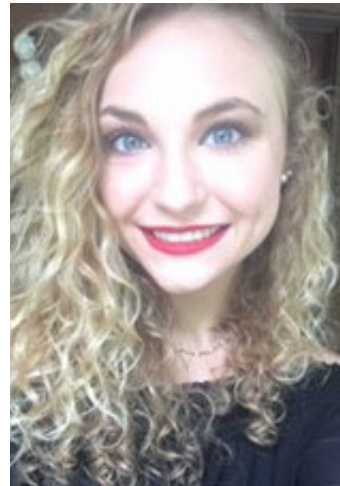
Please join us in welcoming her into her new role as Maternity Care Director.



Elizabeth Matera, MD

ST. CLAIRE FOUNDATION

2018 SCHOLARSHIP RECIPIENTS



BAYLEE AKERS - Salt Lick, KY
Richard J. Bausch Family Scholarship - \$1,000 Award

Akers was the 2018 Bath County High School valedictorian and is beginning her college career at Morehead State University this fall. She said her family has been impacted greatly by drug addiction, and her career goal is to become a psychiatric nurse practitioner who works with substance abuse victims.

"I hope to reach out to those who have lost their way to substance abuse and help pull them out of this path of self-destruction. My goal is to help them become the parent that they need to be, the citizen and productive member of society they have the potential to be."



MAKAYLA REYNOLDS - Morehead, KY
Richard J. Bausch Family Scholarship - \$1,000 Award

Reynolds is beginning her freshman year at Morehead State University this fall through the Rowan County Early College Academy. She has been a St. Claire HealthCare volunteer for two years and is striving to become a mental health counselor.

"In Appalachia, there are not enough mental health professionals or facilities to serve all the people that desperately need counseling and medication management. My long-term goal is to open a practice in Rowan County."



HANNAH SKAGGS - Salyersville, KY
Sister Mary Jeannette Wess Scholarship - \$750 Award

Skaggs is a junior at the University of Pikeville. A pitcher on the U-Pike softball team with a perfect 4.0 grade point average, she intends to go to medical school and would eventually would like to join Doctors Without Borders in order to reach people around the world who are in desperate need.

"In my life, my calling is helping people. I think the best way I could help is to become a doctor. My profession could serve others in Appalachia because I plan to stay in the region."



**SCH Staff,
 We Need Your Help!**

The St. Claire Foundation Golf Outing is one of our biggest fundraisers of the year and we need your help to make this year's outing the best yet!

All SCH staff are welcome to participate individually or by sponsoring a team, but we're also asking for your help encouraging vendors you work with to participate in this great day of golf, fun and food!

The outing will be held Thursday, Sept. 13 at Eagle Trace Golf Course.

All proceeds benefit the St. Claire Charity Care Fund which helps us continue providing care to those in our communities who are most in need.

The registration deadline is Aug. 30.

For more information or to register online, visit www.st-claire.org/golf2018 or call **783.6512**.



Win up to \$5,000!

*Chances are \$10 each.
 You don't have to be present to win.*

Purchase chances online at www.st-claire.org/golfballdrop, or using the registration form below. Your number(s) will be emailed to you. Be sure to save that email!

Proceeds from the raffle will benefit SCH's new inpatient rehab therapy gym and training space.

Golf Ball Drop Raffle chances are nonrefundable.

St. Claire Medical Center, Inc. - Charitable Gaming Exempt Organization #EXE0002007

ENTRY FORM

Return with payment to:
 St. Claire Foundation
 222 Medical Circle • Morehead, KY 40351

Name: _____

Daytime Phone: _____

Address: _____

City: _____

State/ZIP: _____

Email: _____

of Chances: _____

Payment (# of Chances x \$10): _____

Calling All St. Claire Young Professionals!

St. Claire HealthCare is proud to sponsor a team in the 2nd Annual YPA Kickball Tournament on Saturday, Sept. 22 and we need you on our team! To sign up or for more information, contact Beth Reynolds at Elizabeth.Reynolds@st-claire.org.



All proceeds from the tournament will go directly to the Kentucky State Police's program, Shop With a Trooper. This program provides a Christmas shopping experience for children who come from families experiencing economic challenges, while building trusting relationships with law enforcement in our area. Last year's tournament raised \$3,000.

A branch of the Morehead-Rowan County Chamber of Commerce, the mission of the Morehead Young Professionals Association is to connect career minded individuals for professional, leadership, civic, personal and social development through engagement in opportunities which also influence and impact the growth and well being of the Morehead Community.



AUGUST 2018 EDUCATIONAL OPPORTUNITIES

C.E. Programs

August 17 | Tumor Board

8:00 - 9:00 AM, SCR Library - Education Room
Credit: Category 1 AMA, Nursing

August 21 | BLS Check-Off

1:00 - 4:00 PM, CHER 208
Register with KaSandra Hensley at kasandra.hensley@st-claire.org or ext. 6830.

Nursing Professional Development Educational Offerings

To register, email kayla.harrison@st-claire.org

August 21 | CATS Lecture Series "Stroke Case Scenarios"

Noon - 1:00 PM, Café A
Credit awarded: CME, CNE

August 29 | PCA Competency Session 1

8:00 AM - Noon, Café D

August 30 | How to Survive the First Year of Nursing School

8:30 AM - 12:30 PM, Café D
Credit awarded: CNE

August 23 | Secure Recertification Training

8:00 AM - Noon, CHER 102
Credit awarded: CNE

August 28 | Basic Dysrhythmia Course

9:00 AM - 4:00 PM, Sim Lab
Credit awarded: CNE

August 30 & 31 | PALS Full Two-Day Course

Registration: 8:00 AM, Class 8:30 AM - 4:30 PM, Sim Lab
Credit awarded: CME, CNE

The Sim Lab is located in the St. Claire/UK Education Annex (previously Morehead Medical Specialists), immediately on your right through the main entrance.



Are you taking advantage of SCH's Retail Pharmacy staff discounts?

- **All staff enrolled with SCH's Humana Insurance Plan receive a discount on prescription copays.**
Copay discounts are only available for staff members. We would love to fill your family members' prescriptions; however, they are not eligible for staff only discounts.
 - SCH staff with SCH's Humana Green & Blue Insurance Plans receive a 25% discount off prescription copays.
 - SCH staff with SCH's Humana Red Insurance Plan receive a 25% discount off prescription copays up to a maximum of \$15.
- **We offer price matching with local competitors, such as Wal-Mart.**
For example, If you were to fill a 90 day prescription for levothyroxine, you would pay \$20 for the prescription via mail order. With our price match offer, you would pay \$10 for a 90 day prescription.
- **In many cases, with medications that fall into the higher copay tiers, our pharmacy may be able to assist you in finding additional coupons from the manufacturer that will further reduce your cost.**
- **We also offer our staff special pricing on some common medications that are no longer covered by our insurance.**
For example, loratadine can be purchased with a prescription for \$10 for a 90 day supply while cetirizine is currently \$24 for a 90 day supply.

PAYROLL DEDUCTION is also available for prescription copays.

Payroll deduction cannot be used for OTC (over-the-counter) products.

We now have two retail pharmacy locations for your convenience!

Questions? Simply stop by or call our friendly retail pharmacy staff.

St. Claire Regional Medical Center
606.780.5400

Monday - Friday | 7 am - 7 pm
Saturday - Sunday | 9 am - 5 pm

Medical Pavilion
606.780.5550

Monday - Friday | 9 am - 5 pm
Saturday - Sunday | Closed

Fall into Fabulous Skin

One Day Only Sale

Friday, August 24



SkinMedica
An Allergan Company

#1 medically dispensed, prescription-strength skin care system that can actually transform your skin



\$399
MSRP \$520

Award Winning System
Get award-worthy skin with our most celebrated products

- *TNS Essential Serum* (1.0 oz.)
- *HA5* Rejuvenating Hydrator (2.0 oz.)
- *Lytera* 2.0 Pigment Correcting Serum (2.0 oz.)



\$345
MSRP \$475

Everyday Essentials System
Our daily must-haves for optimal results

- *TNS Essential Serum* (1.0 oz.)
- *Retinol Complex 0.25 (1.0 oz.)
- *HA5* Rejuvenating Hydrator (2.0 oz.)
- *Essential Defense Mineral Shield Broad Spectrum SPF 35 Sunscreen (1.85 oz.)



\$145
MSRP \$292

SKINMEDICA'S REGIMEN
Engineered for men's skin to provide age defense and daily damage restoration.

- *Facial Cleanser (6oz)
- *HA5* Rejuvenating Hydrator (1.0 oz.)
- *Recalibrate (For Men) (1.85oz)
- *Essential Defense SPF 47 (1.85oz)

BUY 2
Vitalize or Rejuvenize Chemical Peels
for only **\$249** & GET 1 Vitalize Peel FREE
SAVE \$200

Latisse
(bimatoprost ophthalmic solution) 0.03%
5-mL kit
only **\$119**
MSRP \$179

10% off
All SkinMedica® Products*
*Excludes Advertised Packages

50% off all LASER packages

Skin Rejuvenation

Our non-surgical skin rejuvenation laser services treat the appearance of **Fine Lines & Wrinkles, Sagging Skin, Dark Spots, Acne or Acne Scarring.**

Hair Removal

Our Syneron Candela® laser is safe and effective on all skin types and can be used to remove hair from the **Chest, Back, Face, Stomach, Underarms and Feet.**

St. Claire Aesthetics

Located on the first floor of the Medical Center

Connect with us!

Sale offers cannot be combined. No additional discounts, promotions or offers apply. 8/18

606.783.6760
Call to schedule your FREE skin consultation!



SEPTEMBER 2018

Sept. 1 Sharon J. Gee Robert D. Hamilton Howard J. McClain Amber D. Munday	ICU Family Medical Supply Health Information Mngt. Respiratory Therapy	Haley L. Evans Carrie J. Gross Lalona L. Hall Kristi L. Helton Alma B. Krueger Rhonda C. Lewis Regina M. Percino Suzanne Russell Rebecca A. Winkleman	Nursing Administration Emergency Department Family Medicine Express Telecare Environmental Services Hospice Family Medicine AHEC TCU	Kristen Prather Janessa A. Ritchie	Financial Services Pain Management
Sept. 2 Vicki L. Adkins Troy W. Crossley Christopher M. Hall Charles A. Logan II Don L. Parker Annette Sparks	Medical Group Admin. Outpatient Infusion Srvc. Retail Pharmacy Food Services Infusion Solutions Home Health	Sept. 13 Kristi M. Gooding Teretha B. Johnson Jackie L. King	FM - Morehead Emergency Department TCU	Sept. 22 Sarah J. Campbell Kimberly R. Cundiff Chad W. Jaynes Shandy M. Karrick William D. Thomas	Gastroenterology - MG FM - Olive Hill Health Information Mngt. THC Emergency Department
Sept. 3 Sara R. Fields Selina B. Prater	Emergency Department FM - Morehead	Sept. 14 Heather D. Burton Robin A. Donehue Crystal D. Gardner Jennifer L. Hopkins Christopher S. Taylor Madeline M. Wilson	3rd Floor North Nursing Administration Central Billing Office Laboratory Facilities Management 3rd Floor North	Sept. 23 Tosha L. Bates Melissa D. Gilliam Charlotte E. Kinney Angelina M. Klein Tara R. Mains David F. Race Amy R. Riddle Jessica A. Shackelford	Urology - MG FM - Olive Hill 3rd Floor Central Family Medical Supply House Staff Administration Marketing and PR Nursing Administration
Sept. 4 Christopher S. Duff Kimberly S. Hamilton Gloria J. P'Simer	Information Technology Food Services Central Billing Office	Sept. 15 Charlotte L. Hargrave Christina L. Mathiasen Melissia A. Perry	4th Floor Nursing Laboratory 3rd Floor Central	Sept. 24 Amy J. Conley-Sallaz Mary B. Cox Christy L. Falkner Evangeline G. Meadows Sheila K. Psimer Kristen N. Rowley David Stapleton	FM - Morehead Retail Pharmacy Food Services Patient Access Laboratory Urology - MG Infusion Solutions
Sept. 5 Angela C. Fryman	Family Medicine	Sept. 16 Rosemary A. Curtis Mary E. Jessee Cara N. Plank Kristina R. Thompson Cory G. Yoder	Pathology Food Services Cytology TCU THC	Sept. 25 Jessica B. Duvall Jessica K. Hatton Gregory R. McCarty	Health Information Mngt. FM - Morehead Family Medical Supply
Sept. 6 William J. Adkins Debra A. Hayes Sharlet N. Kidd Dylan A. Lambert Charlene Melzer Devin R. Patrick Libbie L. Perry Rachael N. Rice	Information Technology TCU Central Billing Office Marketing and PR FM - Morehead 3rd Floor North Patient Access Laboratory	Sept. 17 Carmen M. Corbin Robin L. Sorrell	Patient Financial Services Central Scheduling	Sept. 26 Alexandria J. McClain Danielle N. Morris	ICU Pharmacy
Sept. 7 Melissa K. Arnett Lauren A. Bates Sabrina M. Henderson	PCTE 3rd Floor Central Environmental Services	Sept. 18 Vernon R. Crum Chasity J. Hobbs Crystal G. Howard Angela D. Johnson Andrea L. Jude Erica S. Lyons	Environmental Services Specialty Practices Admin. FM - Morehead 4th Floor Nursing Environmental Services Emergency Department	Sept. 27 Matthew L. Armitage Khirsten A. Brewer Paz T. Brewer Rachel N. Milner Emily B. Puckett Kimberly A. Withrow	Patient Access OPCC 3rd Floor Central Pediatrics 3rd Floor Central FM - Owingsville
Sept. 8 Edith G. Fields Sarah A. Flynn Stephanie M. Garvin Kelly L. McHugh	FM - Sandy Hook Emergency Department Emergency Department Diagnostic Imaging	Sept. 19 Kristen E. Ginn Tiffany N. Pack Billi N. Prater Megan J. Riggs Megan R. Smallwood	Counseling Services Laboratory Patient Financial Services Home Health Surgery	Sept. 28 Tania Y. Brockman Edna R. Gagliano Shelli R. Knipp Amanda B. Lewis	CT Scan Family Medicine Express Home Health Pharmacy
Sept. 9 Chelsea L. Baker Christopher G. Hobbs Charlotte Johnson Gloria J. Riggs	Financial Services Infusion Solutions Food Services FM - Olive Hill	Sept. 20 Jarrod A. Flora Nicolette E. Kuzman	Home Health Speech Therapy	Sept. 29 Jacob E. Fritz Anna E. Johnson Mitchell Kiser Debra A. Neff	Speech Therapy Internal Medicine - MG Emergency Department Physical Therapy
Sept. 10 Elizabeth M. Hobbs Kristi R. Melek Leandra D. Parker	Infusion Solutions ICU FM - Morehead	Sept. 21 Abby L. Anderson Jeff Flannery Jill P. Grier Brandi L. Martin	Respiratory Therapy Financial Services Nursing Professional Dev. Internal Medicine - MG	Sept. 30 Diane M. Cooper Rachel E. Johnson Loretta L. Ruse	Infusion Solutions Central Billing Office Neurology - MG
Sept. 11 Jacob E. Perry Julie A. Perry	General Surgery Patient Financial Services				
Sept. 12 Michelle L. Brown	Nursing Professional Dev.				

Bereavement Support

A bereavement support group meets the first Monday of each month. Meetings are free and open to anyone dealing with loss.

Monday, Aug. 27 @ 5 p.m.

St. Claire Hospice (201 Lyons Ave., Morehead)

Contact Tiffany Fannin, LSW, at 783-6808 for more information.



222 Medical Circle | Morehead, KY 40351

free CHILD DEVELOPMENT CLASSES
DESIGNED FOR PARENTS AND CAREGIVERS

Early Literacy Skills

For Newborns to Age 6

Help your child develop early reading skills.

Tuesday, Aug. 29 · 6-7 PM

Rowan County Public Library - Community Room



Next Surgical Weight Loss Seminar

Aug. 30 | 6 - 7 PM | CHER Building

Join us for a **FREE** weight loss seminar to learn more about how St. Claire HealthCare Surgical Weight Loss can help you!

Register online at www.st-claire.org/surgicalweightloss or call 606.356.4814.

You can also email jessica.copher2@st-claire.org for more information.

Need a camera for a St. Claire event?

The Marketing/PR Dept. has several cameras available for loan.

Call ext. 6927 to reserve a camera for your event.



NEWSBRIEF

Have an article or event to submit for the Newsbrief?

Please send articles/information to be placed in the SCH Newsbrief to SCHcommunications@st-claire.org.

View current and past Newsbriefs online!
www.st-claire.org/Newsbrief


Connect With Us!



St. Claire HealthCare is a sponsored ministry of the **Sisters of Notre Dame** Covington Province