



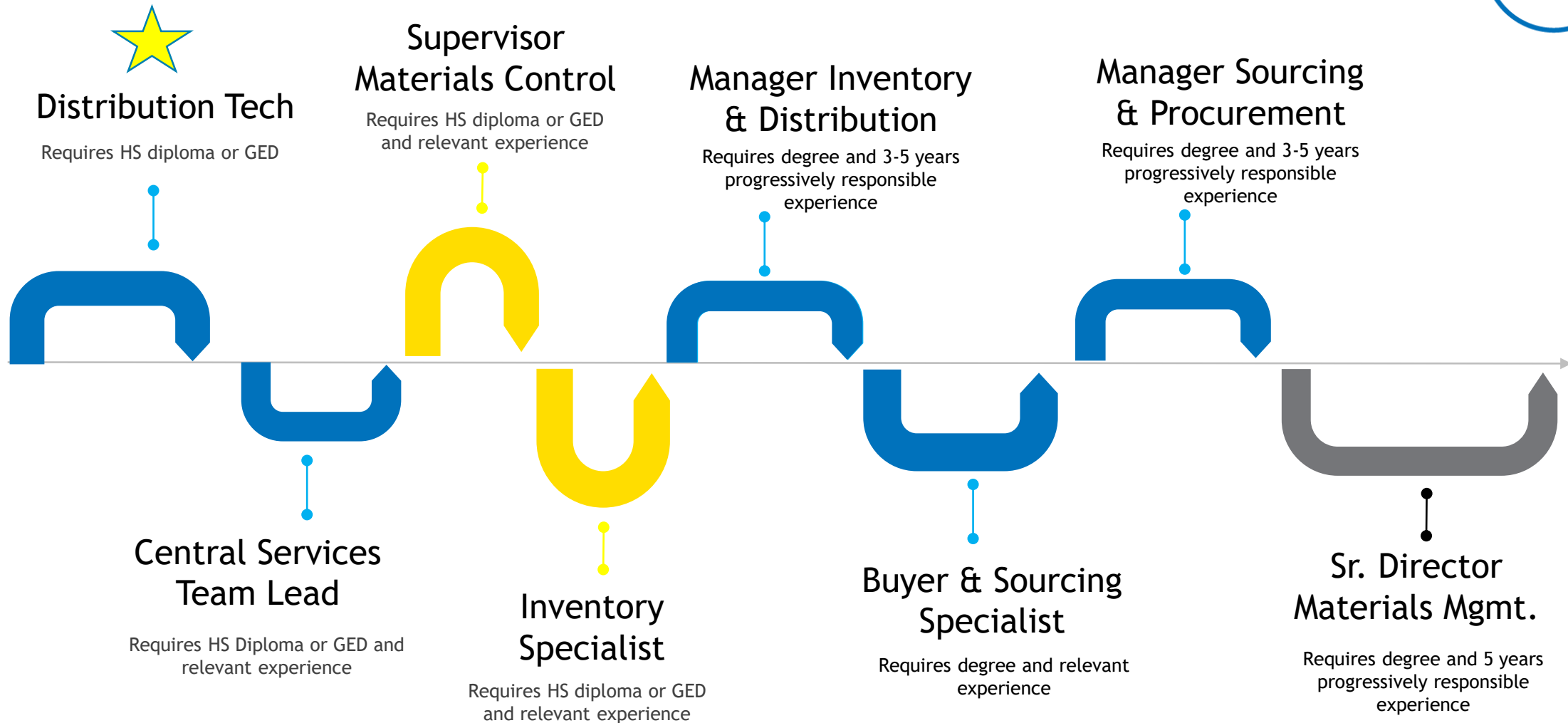
Interested in a Healthcare Career

but direct patient care is not for you?

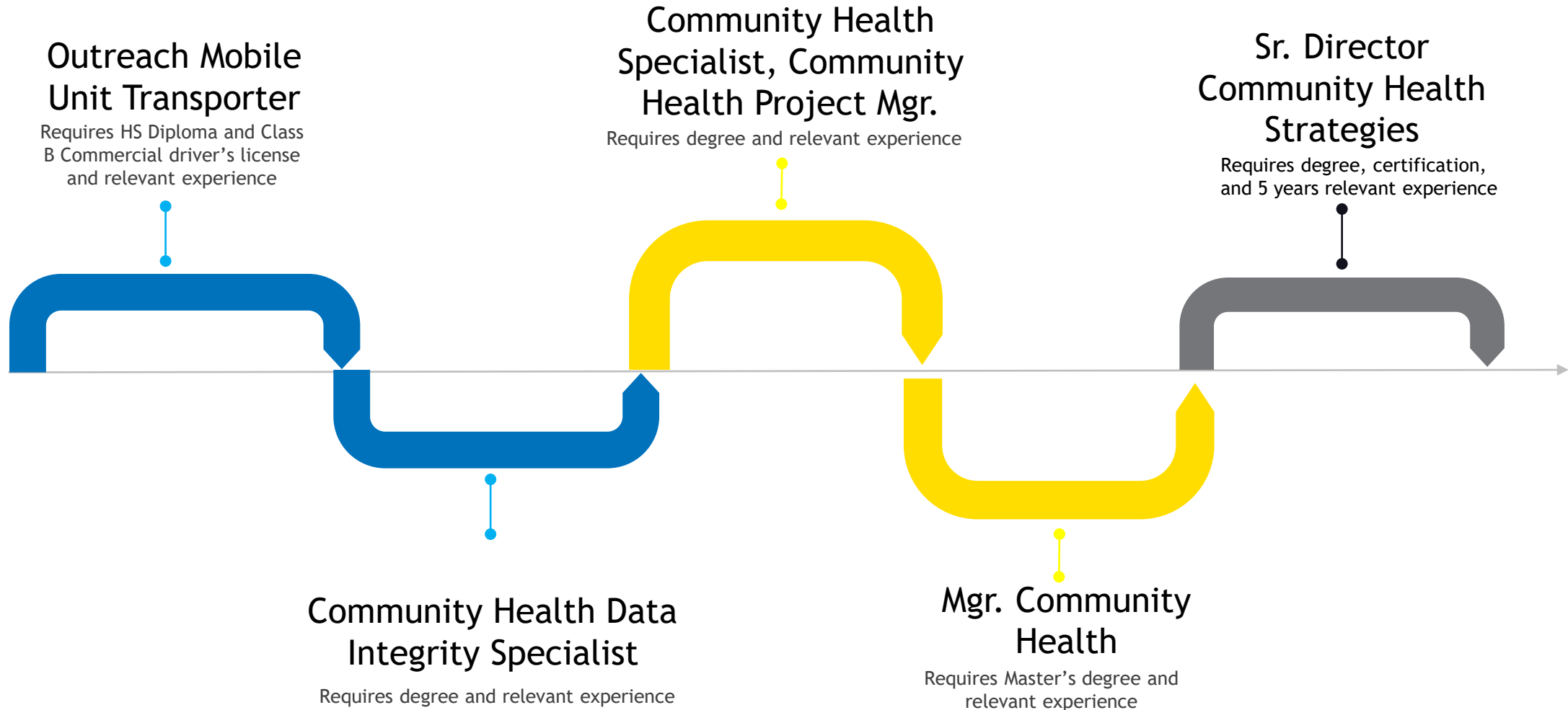
Check out all the career opportunities
that University Health has for you!



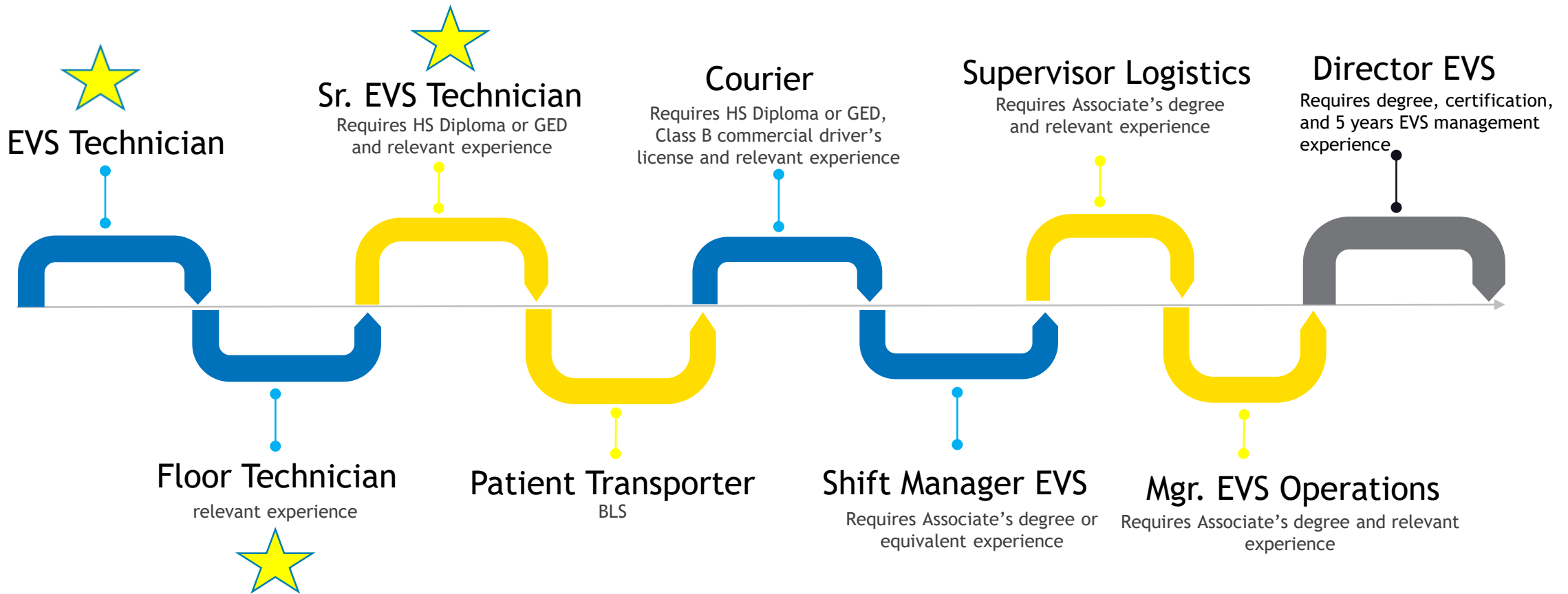
Central Service & Corporate Purchasing



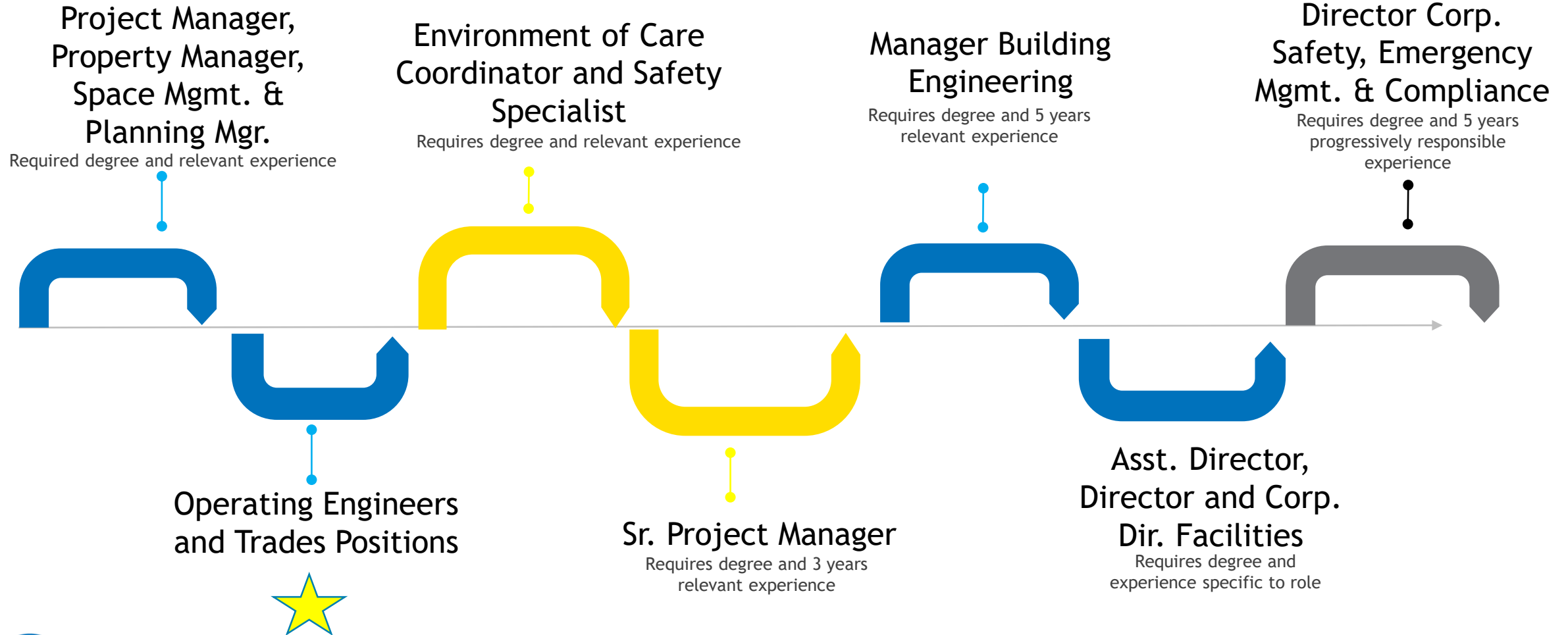
Community Health Education



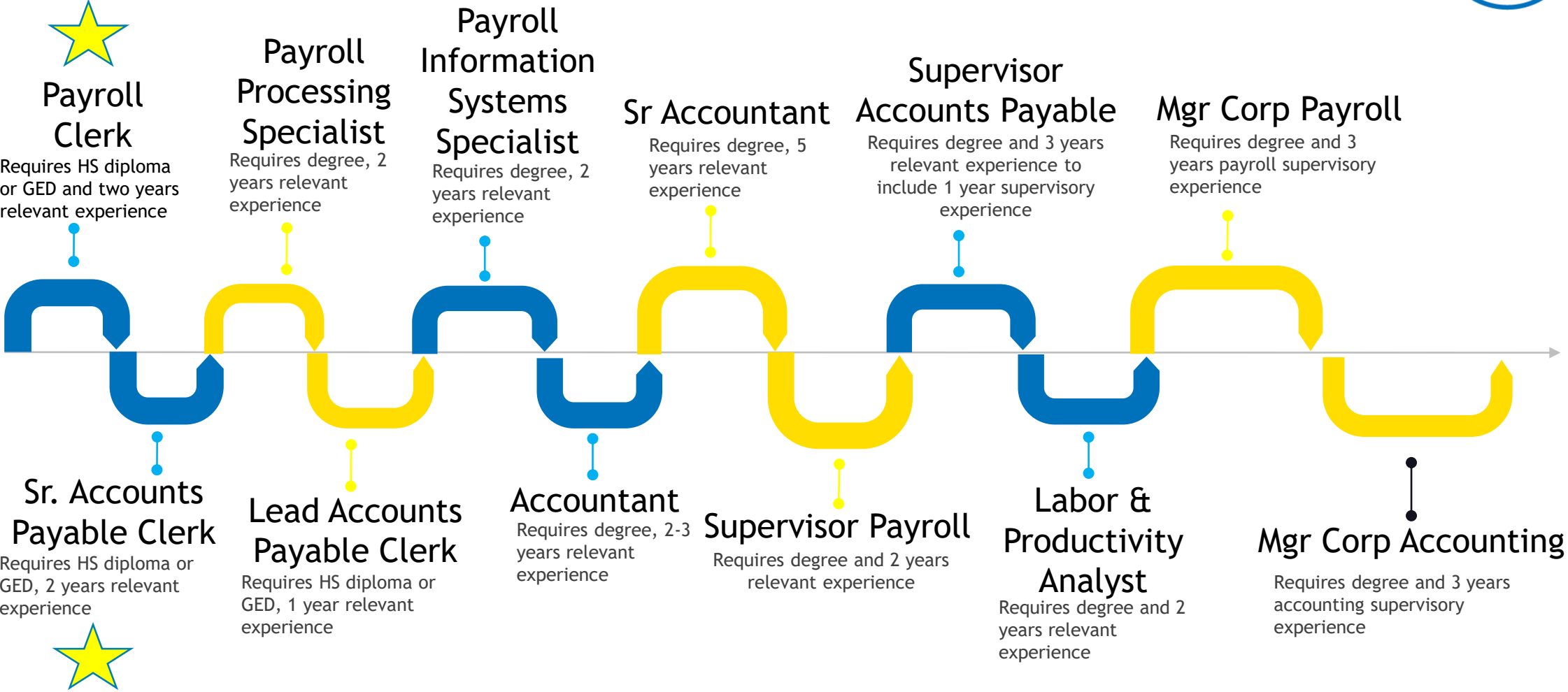
EVS



Facilities



Finance



Food Service, WIC & Clinical Nutrition



Food Service Specialist

Requires HS diploma or GED

Supervisor Food Service

Requires HS diploma or GED and relevant experience

WIC Dietitian

Requires degree from ADA approved institution, registry eligible, license

Supervisor WIC

Requires degree and relevant experience

WIC

Breastfeeding Counselor

Requires HS Diploma or GED and WIC participant

WIC Nutritionist

Requires HS diploma or GED and relevant experience

Clinical Dietitian

Requires degree from ADA approved institution, registry eligible, license

Various Director levels for assigned area

Requires degree and progressively responsible relevant experience

Guest Services



**Customer Experience
Ambassador, Guest
Services Patient Rep**

Requires HS diploma or GED and
relevant experience

Lead Patient Liaison

Requires Associate's degree and 5
years experience

**Sr Director Corp
Guest Services**

Requires Master's degree and 5
years progressively responsible
relevant experience

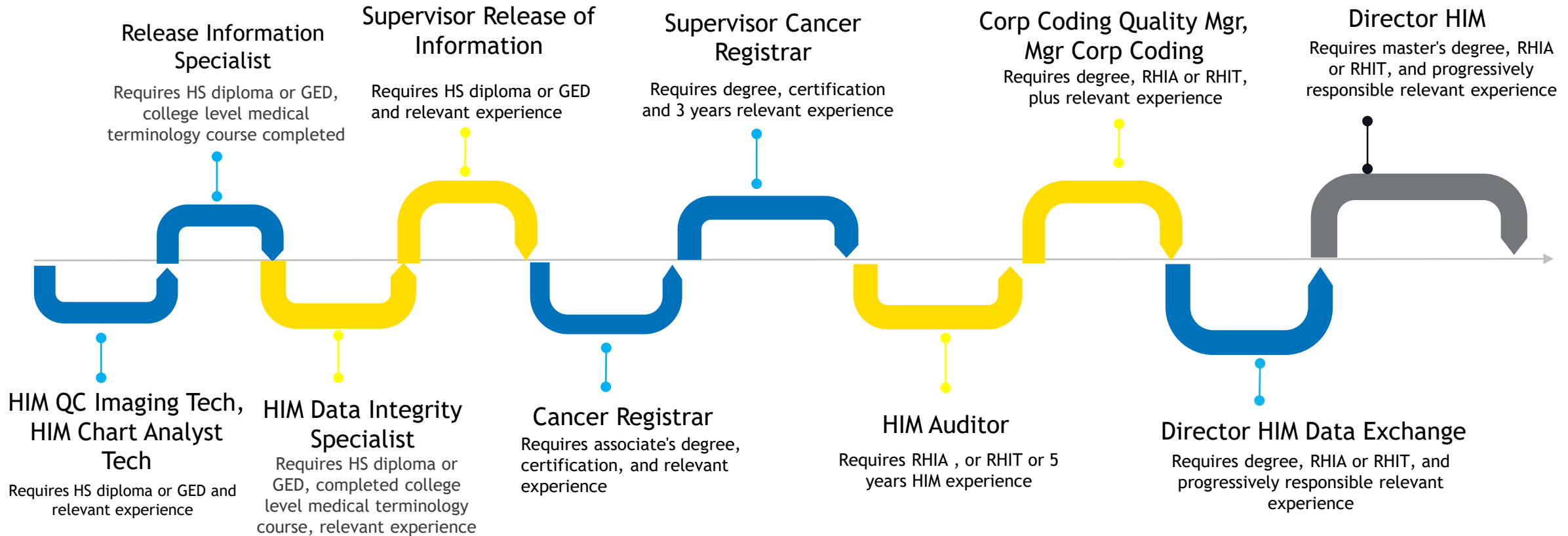
Patient Liaison

Requires associates degree

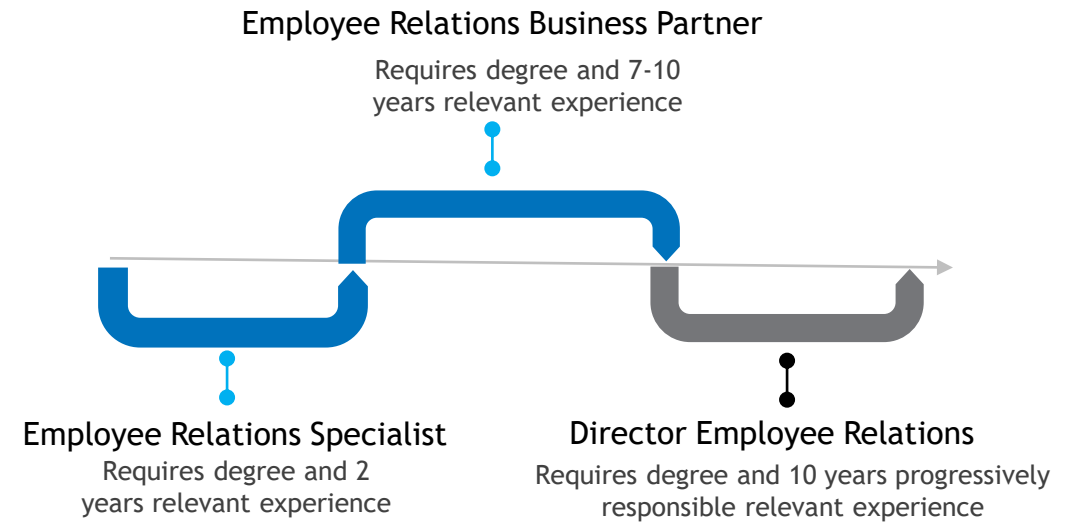
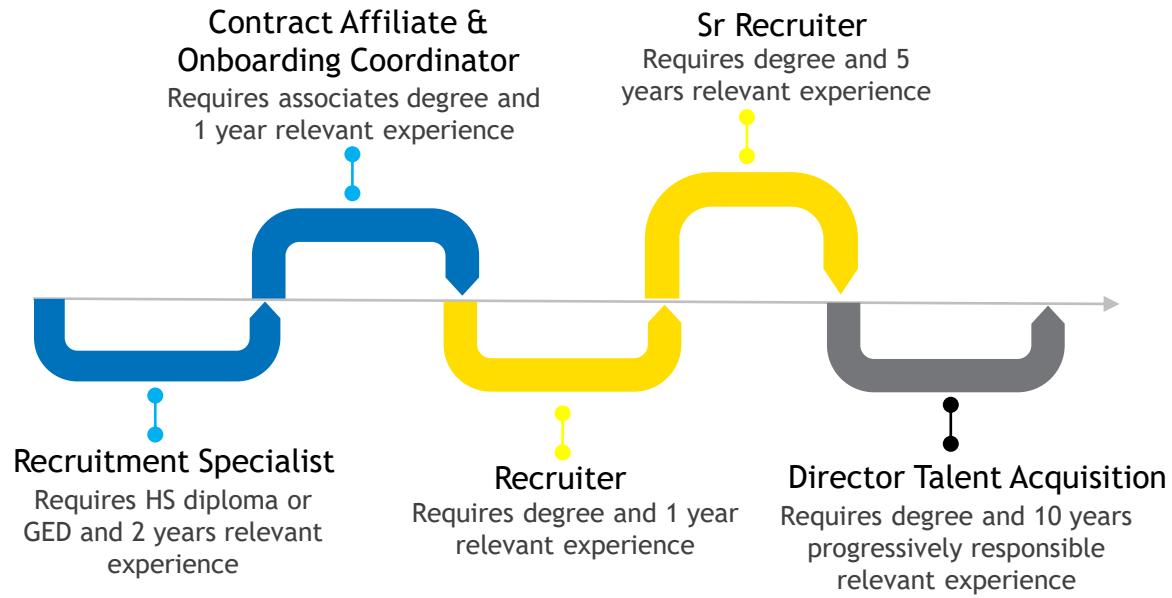
**Mgr LW Guest Services,
Corp Mgr Guest Services**

Requires degree and 3 years relevant
experience plus 3 years supervisory experience

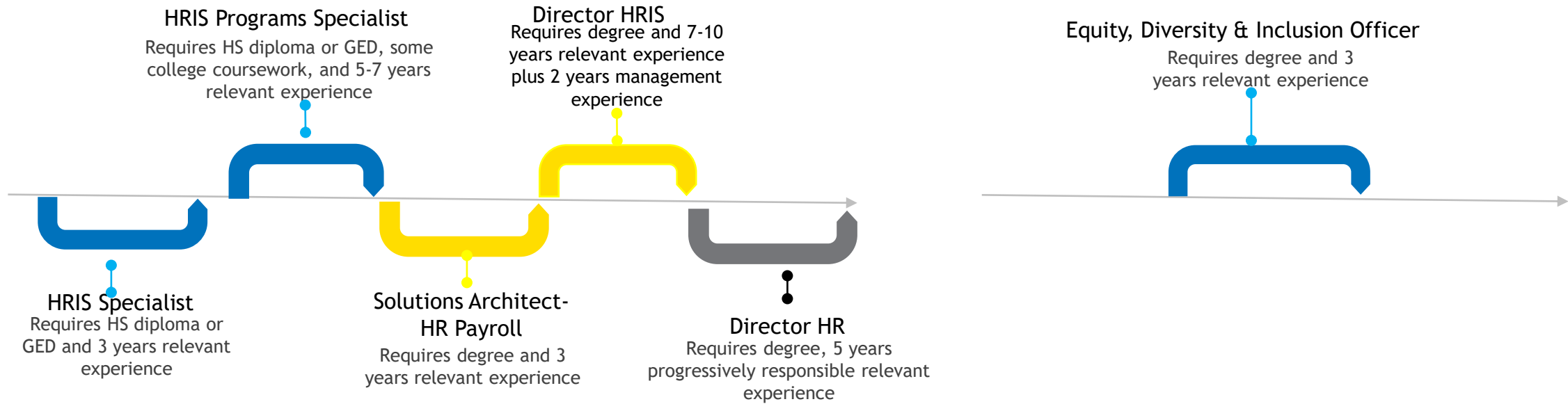
HIM



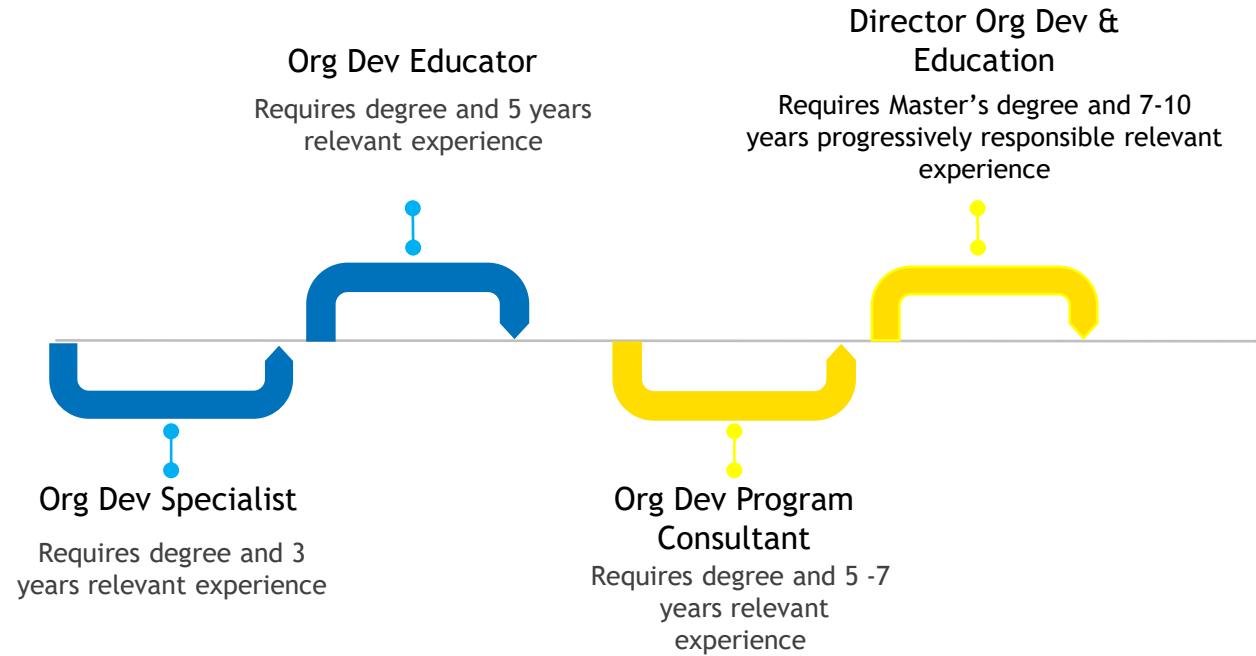
Human Resources



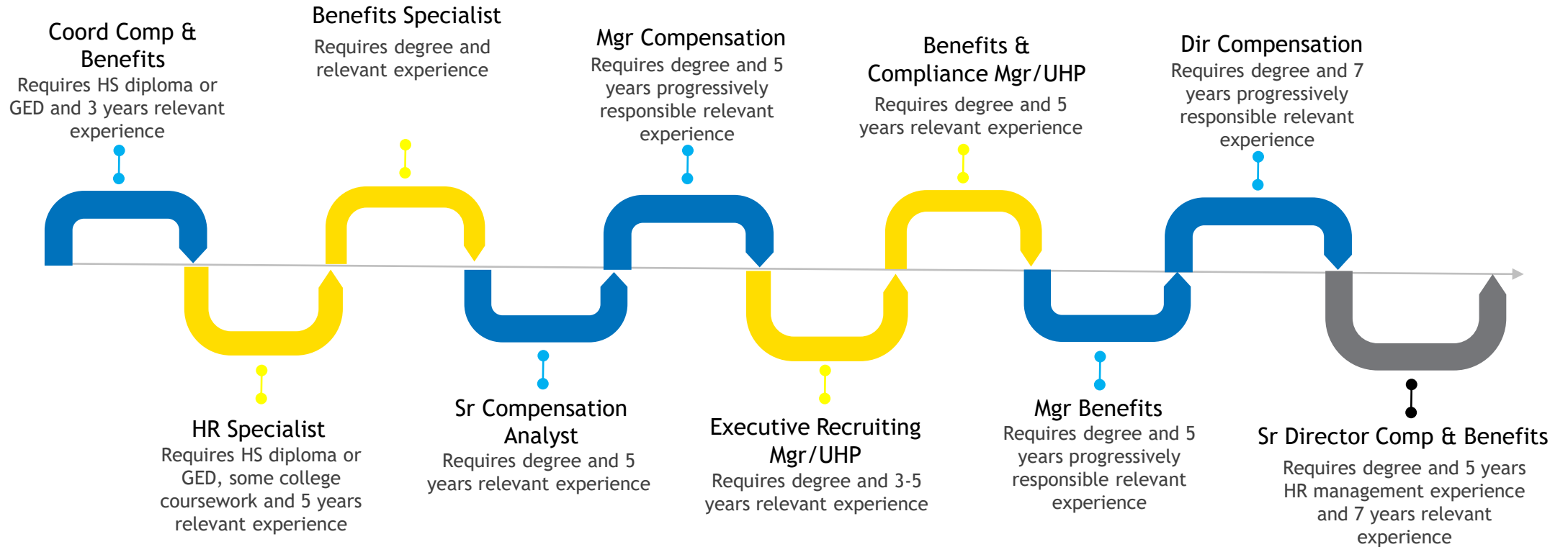
Human Resources (cont.)



Human Resources (cont.)



Human Resources (cont.)



Interpreting Services



Medical Interpreter

Requires HS diploma or GED, medical interpreter experience, fluency in language hired, Bridging the Gap

Healthcare Navigator

Requires degree and relevant experience

System Director Interpreting Services

Requires graduate degree, 3 years progressively responsible relevant experience

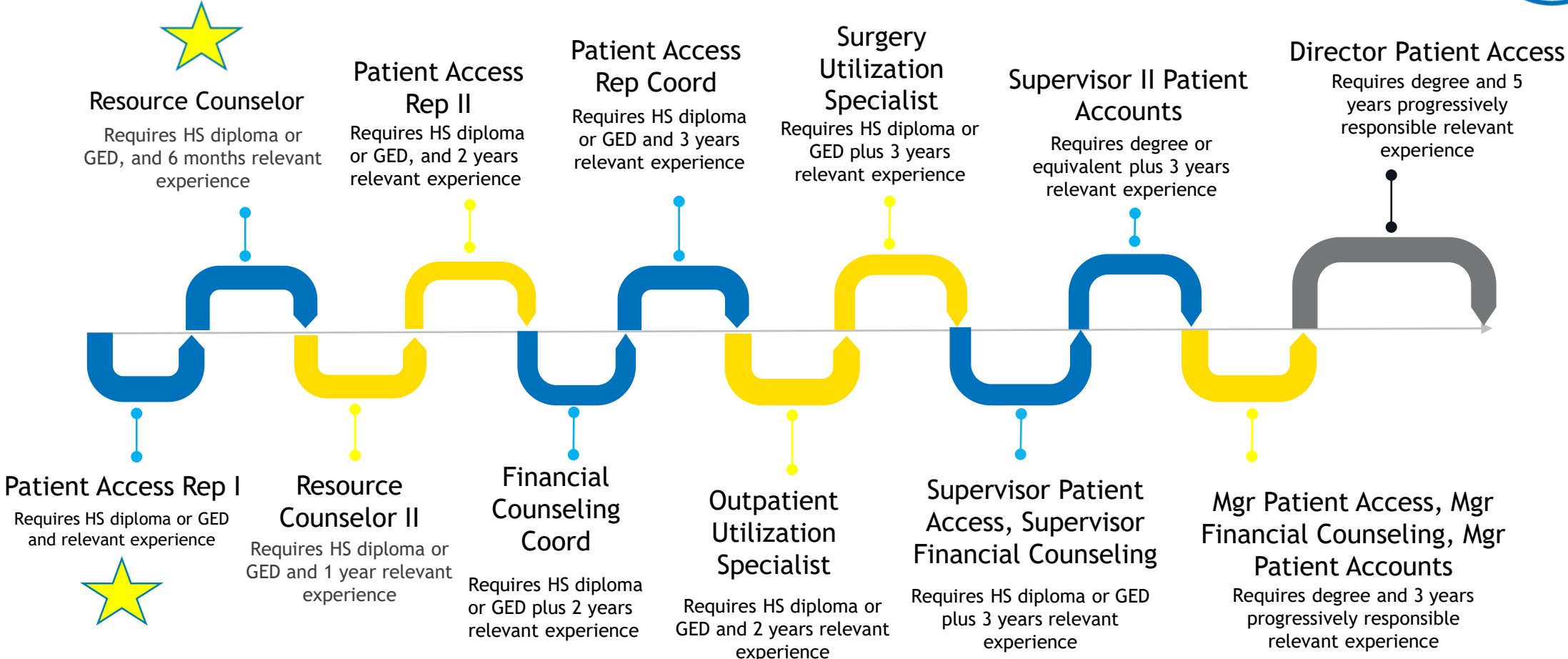
Translator

Requires degree and 3 years relevant experience

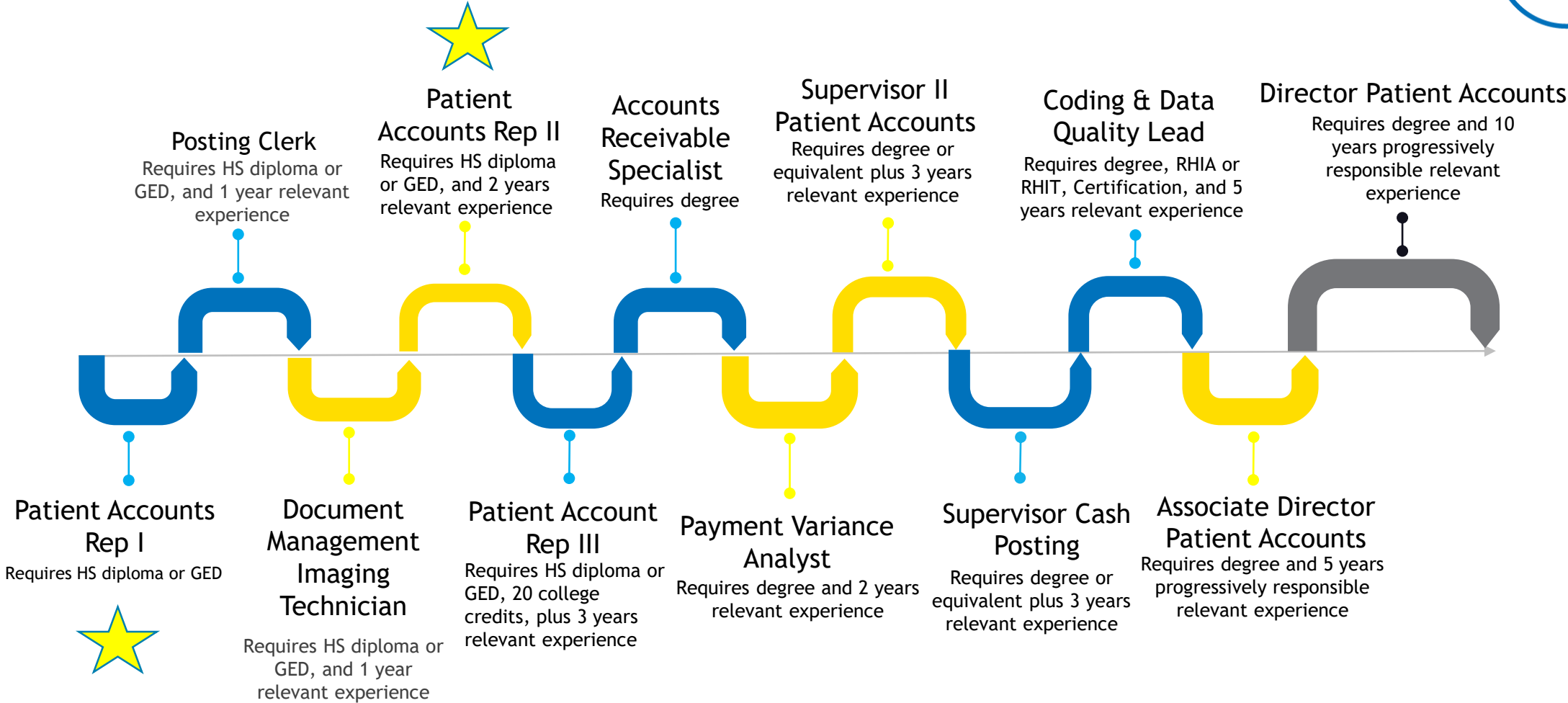
Cultural Healthcare Navigator

Requires Associate's degree, medical interpreter experience and Bridging the Gap

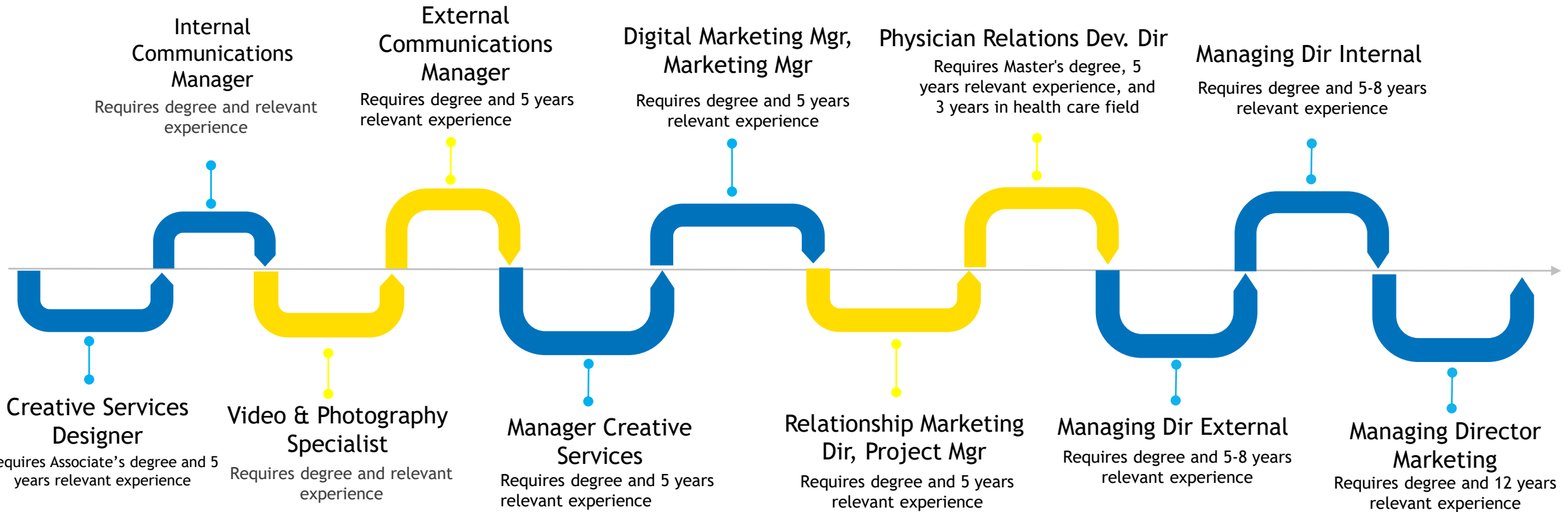
Patient Access



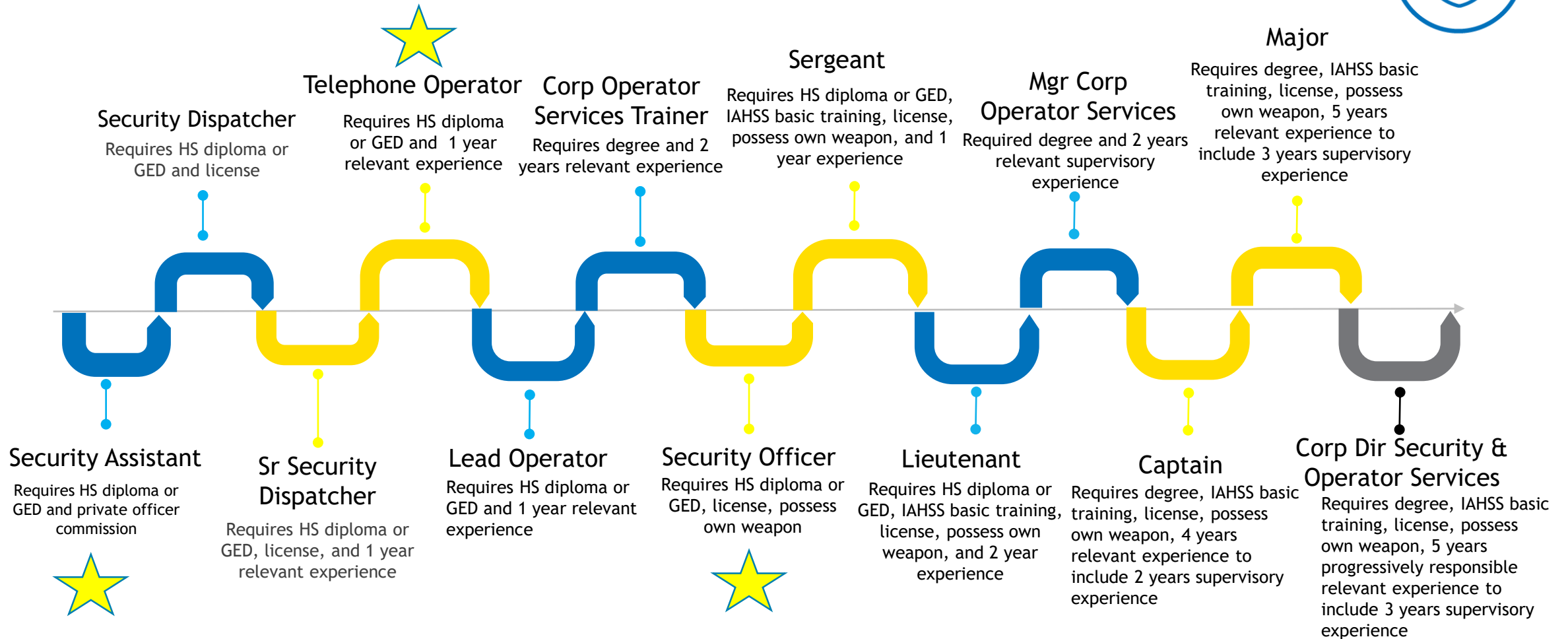
Patient Accounts



Public Relations



Security

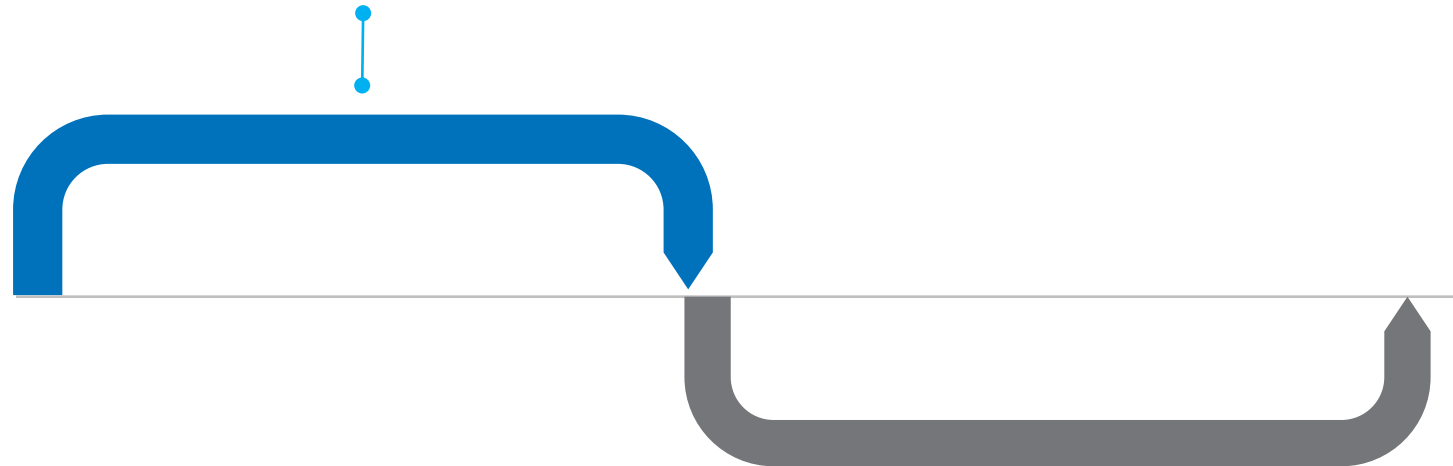


Spiritual Care



Staff Chaplain, Palliative Care Chaplain

Requires a Master's degree in divinity, board certified, completion of level II CPE, and relevant experience



Director Spiritual Care

Requires a Master's degree in divinity, board certified, completion of 4 units of Clinical, Pastoral Education, and 5 years progressively responsible relevant experience

**To view open positions, please visit our career site:
[Apply at UNIVERSITY HEALTH!](#)**

**If you do not see a position you are interested in, click on
“Introduce Yourself” to share your contact information
and interests with the Talent Acquisition team.**

*Still uncertain about where your skills would
be most useful, contact University Health to set up a
FREE career coaching session!*

