

ROCKBOOK-1560



Windows



IP65



GPS



Camera



Dual-battery



Fingerprint



NFC



4G/5G



WIFI



Bluetooth



Performance

- 12th Gen Intel Core™ i5/i7 processor

- Intel® Iris® Xe Graphics eligible

- Support Windows 11/10 OS

Communication

- Highspeed Wi-Fi6

- Support M.2 interface 5G/4G selection

- Bluetooth 5.1 for higher transfer speeds

Function

- 15.6-inch FHD, Optional touch screen, Backlit Keyboard

- Rich interfaces and extended function can meet various needs

- 4850mAh/11.55V+1300mAh/11.1V dual battery, Large battery support hot-swappable

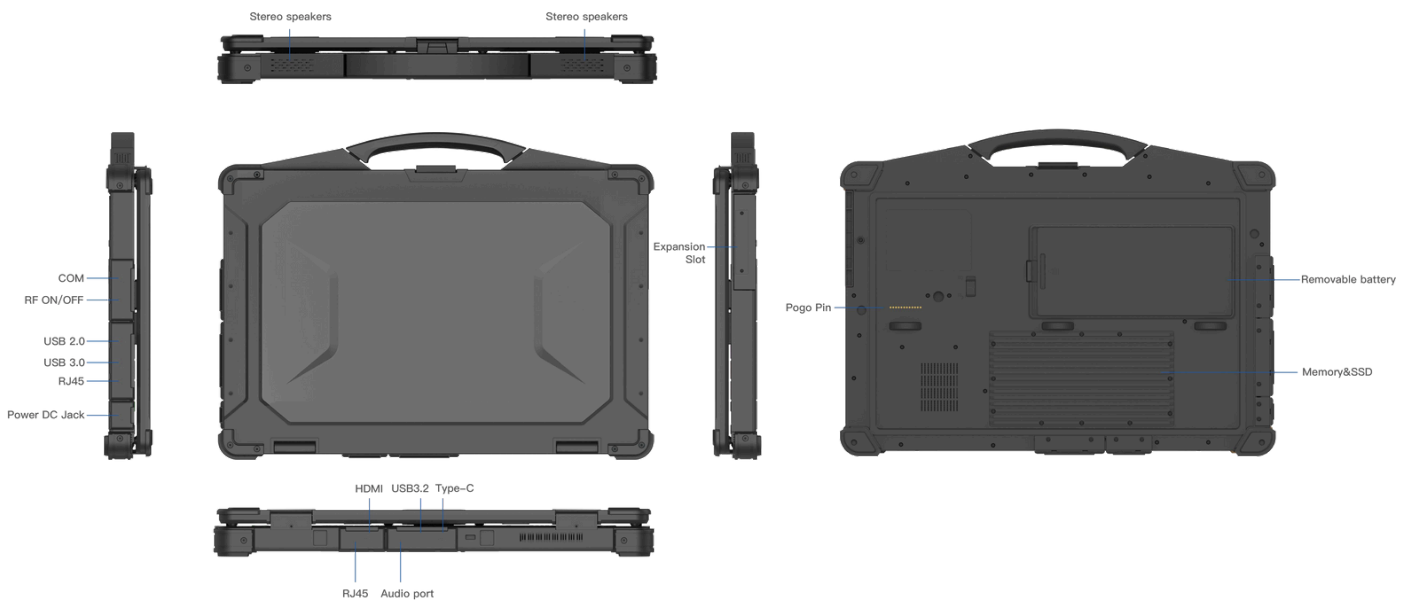
Reliability

- Press fingerprint identification

- IP65 high protection level, 1.22m fall resistant

- In accordance with MIL-STD-810H

Product Six Views



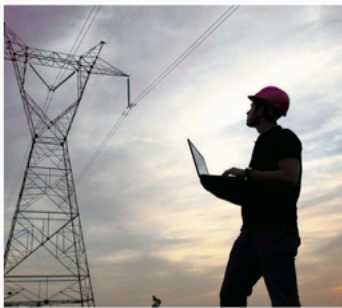
Specification Parameter

Basic parameters	
Dimension	407*305.8*45.5mm
Weight	TBD
Device Color	Black
LCD	15.6 inch FHD 16:9, 1920x1080, 1000 nits
Touch Panel	Optional 10 point G+G capacitive touch screen Corning® Gorilla® Glass
Camera	Front 5.0MP
I/O	USB3.2 *1, USB3.0 *1, USB2.0 *1,TYPE-C, Support Thunderbolt 4 HDMI 2.0a mini *1, SIM *1, TF *1, DB9 (RS232) *1、RJ45 *2, 3.5mm Standard Earphone Jack *1, DC19V/3.78A Power port *1 Anti-theft Lock Slot *1, Right-side Cooling Vent *1 Left-side expansion slot, optional M.2-2280 PCIe interface *1, supports SSD; Optional: M.2, E-KEY, PCIe interface *1 for custom modules. Optional: 12PIN Pogo Pin (USB & charging) *1
Power	AC100V ~ 240V, Output DC 19V/3.78A 71.82W
Battery (Built-in)	
Capacity	11.1V/1300mAh
Type	Built in Li_polyment,battery loadable
Endurance	1.5hrs (Default 50% volume, 200 lumens brightness, playing 1080P HD video)
Battery (Hot-swappable)	
Capacity	11.55V/4850mAh
Type	Li_polyment, removeable battery
Endurance	7.5hrs (Playing 1080P HD video, Conditions: System in balance mode, 320 lumens, 70 dB at 10cm, WiFi and Bluetooth turned off.)

Performance parameter	
CPU	Intel® Core™ i5-1235U/i7-1255U
OS	Windows 11/10
RAM	16GB/32GB
ROM	256GB SSD
Communication	
WIFI	WiFi 6, 802.11a,b,d,e,g,h,i,k,n,r,u,v,w,ac,ax
Bluetooth	BT5.1 Transmission distance: 10m
2G/3G/4G (Optional)	4G(Optional M.2 European standard) LTE-FDD: B1/3/5/7/8/20/28, LTE-TDD: B38/40/41
5G (Optional)	5G optional M.2, 5G NR: NSA n1/ 2/ 3/ 5/ 7/ 8/ 12/ 13/ 14/ 18/ 20/ 25/ 26/ 28/ 29/ 30/ 38/ 40/ 41/ 48/ 66/ 70/ 71/ 75/ 76/ 77/ 78/ 79/ SA n1/ 2/ 3/ 5/ 7/ 8/ 12/ 13/ 14/ 18/ 20/ 25/ 26/ 28/ 29/ 30/ 38/ 40/ 41/ 48/ 66/ 70/ 71/ 75/ 76/ 77/ 78/ 79 LTE, LTE-FDD B1/ 2/ 3/ 4/ 5/ 7/ 8/ 12/ 13/ 14/ 17/ 18/ 19/ 20/ 25/ 26/ 28/ 29/ 30/ 32/ 66/ 71 LTE-TDD B34/ 38/ 39/ 40/ 41/ 42/ 43/ 48, LAA B46, UMTS WCDMA B1/ 2/ 4/ 5/ 8/ 19
GNSS	Supports single GPS or single glonass, default GPS
Reliability	
Operate Temperature	-20 °C ~ 60 °C
Store Temperature	-30 °C ~ 70 °C
Humidity	95% Non-Condensing
Rugged Feature	IP65 certified, MIL-STD-810H certified
Drop Height	1.22m
Data Collection	
NFC	Optional
Fingerprint	SPI fingerprint (power on login)
Keyboard	US Layout Keyboard with Backlight

Application Range

Various modules and accessories can be selected to meet customers' application in various industries.



Power Maintenance



Equipment Testing



Automobile Manufacturing



Energy Industry