

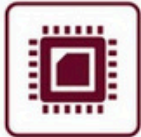
ROCKBOARD-COM-TYPE6

COM Express Module

Type 6 COM express Basic Module motherboard based on the Intel® Coffee Lake H platform, with onboard Intel i7-9850HL/i7-9850HE/i3-9100HL processor, QM370 chipset and Intel® UHD Graphics630 integrated graphics card. With two DDR4 2666MHZ SO-DIMM memory slots, it supports up to 64GB. It has strong computing capability and rich port types, which are widely used in automation, electricity, communication, transportation, medical treatment and other fields.



Product Features



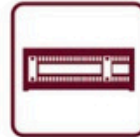
9th Gen processor



Dual-channel DDR4 memory slot



Supports independent display of 3 channels



Multiple PCIe signals

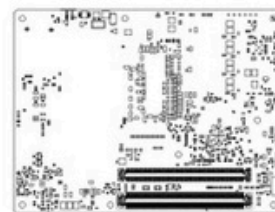
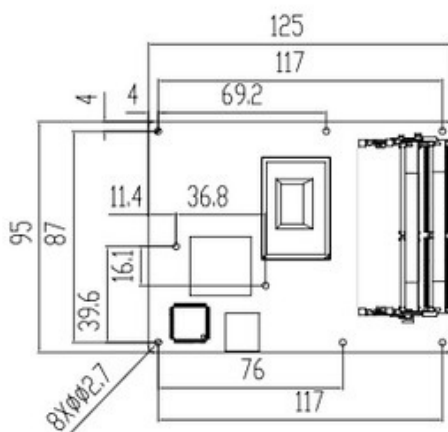


Supports wide temperature range of -40°C~+85°C



Wide voltage power supply (8.5V~16V)

Product Dimensions Drawing



Product Specifications

Item	Description
Version	COM Express® basic, Type 6
Processor	Intel® Core™ i7- 9850HE/i7-9850HL/i3-9100HL
Chipset	QM370
System Memory	2x SO-DIMMs DDR4, single slot of maximum 32 GB 2133/2400/2666 MHz UP to 64GB (non-ECC)
Storage Configuration	4*SATA3.0
Display Signal	3 x DDI channel (standard configuration: 3*DP++, VGA, DVI and other displays can be configured), 1*eDP
USB Signal	4*USB2.0/4*USB3.1
LAN Signal	1-channel 10/100/1000Mbps Ethernet
Sound Card Configuration	1*HDA
Other Port Signals	2-channel serial ports, 8*GPIO (4*GPI/4*GPO), I2C, LPC and SMBus
Bus Expansion	4*PCIEx1, 1*PCIEx4, 1* PCIe x16 (1* PCIe x16 can be divided into 2 * x8 or 1* x8+2*x4)
Power Supply	Adopt a single 12V power supply or 5VSB plus 12V dual power supply, supporting S0, S1 and S5, and AT/ATX working mode. The single power supply can support wide voltage 8.5V~16V input
Operating temperature	i39100HL-01:0°C~+60°C; i79850HE-01:-40°C~+85°C;
Storage <<temparture	(-40) °C~ (+85) °C
Product Dimension	125mm * 95 mm
Operating Systems	Windows10 ,Linux(Ubuntu)

Ordering Information

Model No	Description
TYPE6-i7-9850HE	COM Express Basic Type6 module/QM370 chipset/onboard Intel Core i7-9850HE 2.7GHz CPU/ 2x SO-DIMMs DDR4 slots/3*DP++/1*eDP / 4*SATA/ 1 x Gigabit LAN port/4*USB3.1/4*USB2.0/2*serial port/1*HAD/ 4 x PCIEx1/ 1 x PCIEx4/ 1 x PCIe x16/ -40°C~+85°C
TYPE6-i7-9850HL	COM Express Basic Type6 module/QM370 chipset/onboard Intel Core i7-9850HL 1.9GHz CPU/ 2x SO-DIMMs DDR4 slots/3*DP++/1*eDP / 4*SATA/ 1 x Gigabit LAN port/4*USB3.1/4*USB2.0/2*serial port/1*HAD/ 4 x PCIEx1/ 1 PCIEx4/ 1 x PCIe x16/0°C~+60°C
TYPE6-i7-9850HL-WD	COM Express Basic Type6 module/QM370 chipset/onboard Intel Core i7-9850HL 1.9GHz CPU/ 2x SO-DIMMs DDR4 slot/3*DP++/1*eDP / 4*SATA/ 1 x Gigabit LAN port/4*USB3.1/4*USB2.0/2*serial port/1*HAD/ 4 x PCIEx1/ 1 x PCIEx4/ 1 x PCIe x16/-40°C~+85°C
TYPE6-i3-9100HL	COM Express Basic Type6 module/QM370 chipset/onboard Intel Core i3-9100HL 1.6GHz CPU/ 2x SO-DIMMs DDR4 slots/3*DP++/1*eDP / 4*SATA/ 1 x Gigabit LAN port/4*USB3.1/4*USB2.0/2*serial port/1*HAD/ 4 x PCIEx1/ 1 x PCIEx4/ 1 x PCIe x16/0°C~+60°C
TYPE6-HTSNK	Including heat-conducting plate, CPU heat sink, etc.
TYPE6-BCKPLN	Part No. of backplane