



Santorino

 OPEBI IKEJA | 18yrs Lease



CCTV Surveillance



Water Heater



Solar Inverter



Smart Lock



Electric Fence Wire



POP Ceiling



Ample Car Park

2-Bedroom Apartment

₦65M | ROI: 7M

3-Bedroom Apartment

₦75M | ROI: 10M



www.kindomfirmpropertiesng.com

Welcome to Santorino Opebi

– The Epitome of Luxury and Comfort

“Nestled in the prestigious Awuse Estate, a sought-after enclave in Opebi, Ikeja, Santorino redefines the concept of hospitality, with its exquisitely designed apartments.”

A Haven of Elegance and Sophistication

Every detail of Santorino has been thoughtfully curated to offer guests a five-star experience. From the elegant interiors to the cutting-edge design, each apartment is a masterpiece of luxury. Our apartments are equipped with:

Top-Tier Security

Located within the gated Awuse Estate, Santorino promises peace of mind with 24/7 estate security and state-of-the-art surveillance systems. This serene environment, home to expatriates and high-profile individuals, ensures the utmost privacy and safety.

Prime Location

Santorino's strategic location offers easy access to the city's finest landmarks and attractions, including:

- Sheraton Hotel, Third Mainland Bridge, and Murtala Mohammed International Airport.*
- Maryland Mall, Shodex Garden, and Lateef Jakande Park.*
- Top-tier dining options like Cold Stone, Domino's Pizza, and The Place.*

Experience Santorino

Step into Santorino Opebi and immerse yourself in a world of luxury, comfort, and impeccable design. Here, every stay is an unforgettable journey into elegance.

2BEDROOM APARTMENT **3 Month** Payment Plan

INITIAL DEPOSIT **50%**

1st Month	₱10,833,333
2nd Month	₱10,833,333
3rd Month	₱10,833,333

3BEDROOM APARTMENT **3 Month** Payment Plan

INITIAL DEPOSIT **50%**

1st Month	₱12,500,000
2nd Month	₱12,500,000
3rd Month	₱12,500,000

Santorino

LANDMARK

Maryland Mall

showdex Garden

3rd Mainland bridge

Lateef Jakande Park

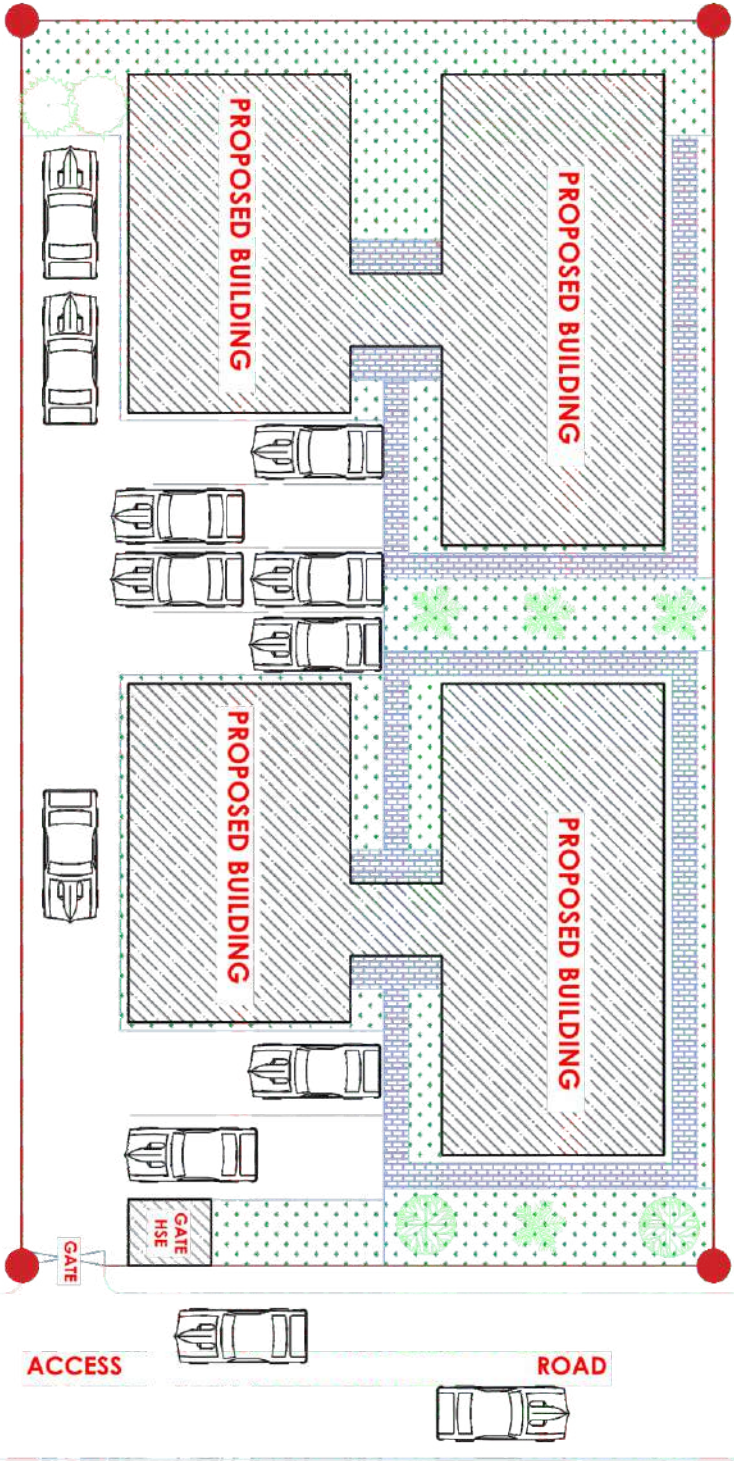
Sherston Hotel

Domino's Pizza

Cold Stone

*Muritala mohammed
International airport*





SITE LAYOUT



GROUND FLOOR PLAN

**THREE BEDROOM
WITH BO
(1 UNIT)**

**2 BED WITH
(2 UNITS)**

STUDIO NINETY
ARCHITECTS AND PROJECT MANAGER
jms@studio90.com
07060454032



**THREE BEDROOM
WITH BQ
(1 UNIT)**

GROUND FLOOR PLAN

STUDIO NINETY
 ARCHITECTS AND PROJECT MANAGER
 jimohab.dulalae@yareo.com
 07060454032



**2 BED FLAT
(2 UNITS)**

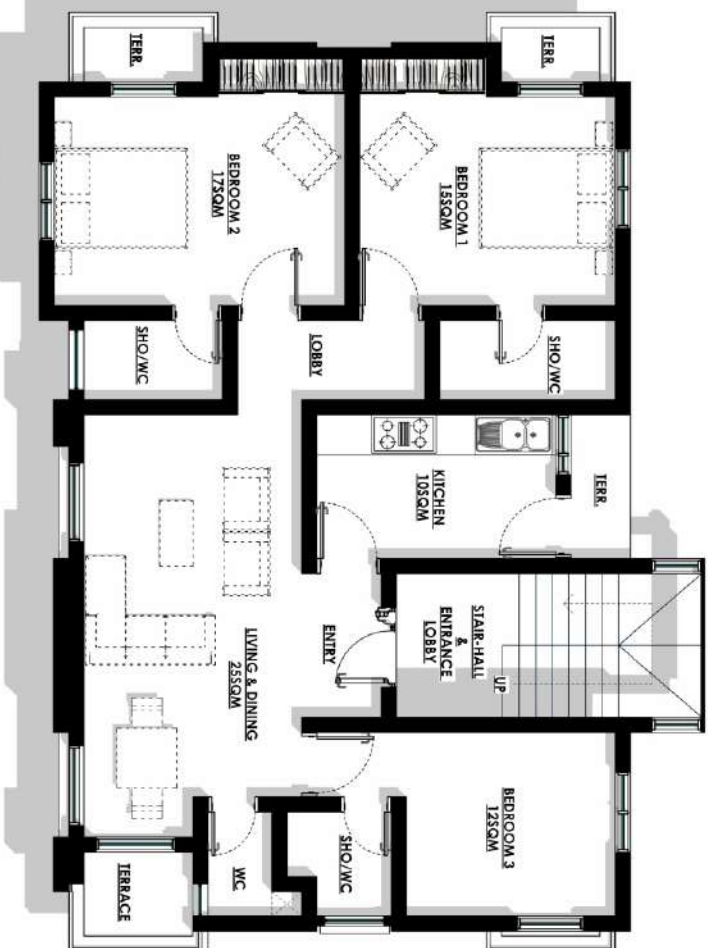
GROUND FLOOR PLAN

STUDIO NINETY
 ARCHITECTS AND PROJECT MANAGER
 jnn@studio90.com
 07060454032



TYPICAL FIRST-THIRD FLOOR PLAN

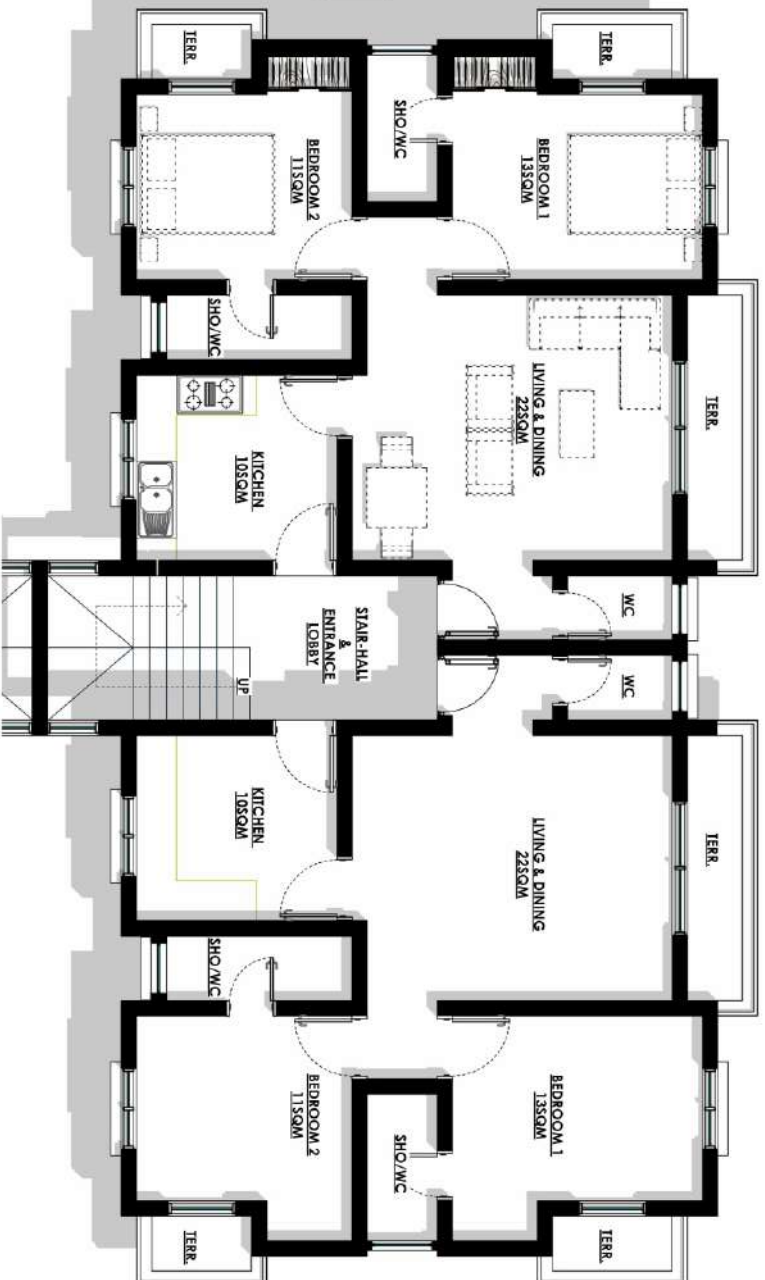
STUDIO NINETY
 ARCHITECTS AND PROJECT MANAGER
 jmn@studioninety.com
 07060454032



**THREE BEDROOM FLAT
(1 UNIT)**

TYPICAL FIRST-THIRD FLOOR PLAN

STUDIO NINETY
 ARCHITECTS AND PROJECT MANAGER
 jnrachadulibes@yahoo.com
 07060454032



TYPICAL FIRST-THIRD FLOOR PLAN
2 BED FLAT (2 UNITS)

STUDIO NINETY
 ARCHITECTS AND PROJECT MANAGER
 jinohishidelle@vnhoo.com
 07060454032



ELEVATION 1

Santorino



CCTV
Surveillance



Water
Heater



Solar
Inverter



Smart
Lock



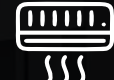
Electric
Fence Wire



POP
Ceiling



Ample
Car Park



AC

kingdomfirmproperties.com

