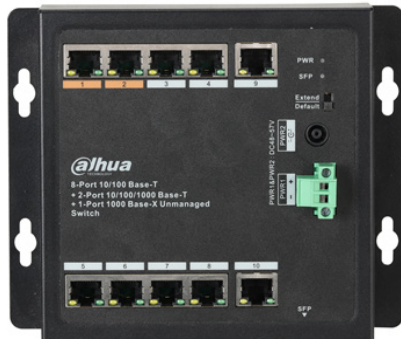


PFS3111-8ET-96-F

11-Port Switch with 8-Port PoE



Technical Specification

Model	DH-PFS3111-8ET-96-F
Ethernet Port	8*RJ45 10/100M (PoE) 2*RJ45 10/100/1000M (uplink) 1*SFP 1000M (uplink)
PoE Power Consumption	Port1≤60W, Port2≤60W, Port3~8≤30W, total power≤96W
PoE Protocol	IEEE802.3af, IEEE802.3at, Hi-PoE
Switching Capacity	13.6Gbps
Packet Forwarding Rate	5.65Mpps
Packet Buffer Memory	2Mb
Application Humidity	10%~90%
Power	DC 48-57V
Lightning Protection	Common Mode 4KV Differential Mode 2KV
Working Temperature	-30°C~65°C
Dimension(W×D×H)	158mm x130mm x25mm

Accessories

Model	
PFT3950	1.25G 850nm,500m,LC, Multi-mode
PFT3960	1.25G 1310/1550nm,20km,LC, Single-mode
PFT3970	1.25G 1550/1310nm,20km,LC, Single-mode

Features

- Layer-two Unmanaged PoE Switch
- Conforms to IEEE802.3, IEEE802.3u and IEEE802.3X standards
- MAC auto study and aging, MAC address list capacity is 8K
- Conforms to IEEE802.3af and IEEE802.3at power supply standard. Port 1 and 2 support Hi-PoE 60W power supply
- Adopts metal structure
- High protection grade, supports common mode 4KV, differential mode 2KV
- Supports DC 48V-DC 57V power supply and dual power backup
- Supports -30°C~65°C operating temperature
- Supports two types of transmission modes, which are Default and Extend. Default mode is standard Ethernet mode with transmission bandwidth of 100 Mbps and supports transmission distance up to 100M via CAT6. Extend mode is long distance transmission mode with transmission bandwidth of 10 Mbps and supports transmission distance up to 250M via CAT6. This function only supports port1-4

Dimensions (mm)

