

Outdoor IR Bullet Network Camera

MODEL: VIGI C330I



H.265+

2/3/4MP



Human & Vehicle
Classification



Smart Detection



IP67 Weatherproof



Built-In Microphone



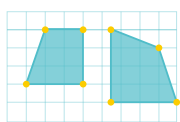
Remote Monitoring

// Human & Vehicle Classification

Intelligently distinguishes humans and vehicles from other objects, so you receive more accurate event notifications.



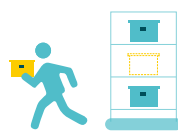
// Smart Detection



**Intrusion
Detection**



**Line-Crossing
Detection**



**Object Removal
Detection**



**Object Abandoned
Detection**



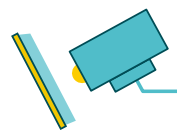
**Region Entering
Detection**



**Region Exiting
Detection**



**Motion
Detection**



**Camera
Tampering**

// SmartVid



Smart IR

Keeps objects from being under-rendered when far away or overexposed when close to camera at night.



Wide Dynamic Range

Adjusts for lighting contrast to minimize shadowing effects and renders images true to life.



3D DNR

Removes abnormal pixelation to provide clearer video and eliminate distortion.

// Specifications

Camera			
Product Model	VIGI C320I	VIGI C330I	VIGI C340I
Image Sensor	1/3" Progressive Scan CMOS	1/2.8" Progressive Scan CMOS	1/3" Progressive Scan CMOS
Slow Shutter	Yes		
Min. Illumination	Color: 0.01 Lux; 0 Lux with IR		
Day & Night Mechanism	IR Cut Filter		
Day/Night Switch	Unified/ Scheduled/ Auto		
Lens			
Focal length	2.8 mm/4 mm/6 mm	2.8 mm/4 mm/6 mm	2.8 mm/4 mm/6 mm
Aperture	2.8mm: F2.2 4mm: F2.0 6mm: F2.0	2.8mm: F2.2 4mm: F2.0 6mm: F2.0	2.8mm: F2.2 4mm: F2.0 6mm: F2.0
Focus	Fixed		
FOV	2.8mm: 88.2°/48.6°/106.5° (H/V/D) 4mm: 75.2°/40.8°/88.3° (H/V/D) 6mm: 49.8°/27.6°/57.7° (H/V/D)	2.8mm: 97.8°/52.9°/117.9° (H/V/D) 4mm: 82.8°/44.5°/98.1° (H/V/D) 6mm: 54.5°/30.0°/63.2° (H/V/D)	2.8mm: 88.8°/48.9°/106.5° (H/V/D) 4mm: 75.2°/40.8°/88.3° (H/V/D) 6mm: 49.8°/27.6°/57.7° (H/V/D)
Lens Mount	M12	M12	M12
DORI Distance	2.8 mm: Detect: 45 m (149 ft) Observe:19 m (62 ft) Recognize: 9 m (30 ft) Identify: 5 m (15 ft) 4 mm: Detect: 60 m (198 ft) Observe: 25 m (83 ft) Recognize: 12 m (40 ft) Identify: 6 m (20 ft) 6 mm: Detect: 91 m (297 ft) Observe: 38 m (124 ft) Recognize: 18 m (59 ft) Identify: 9 m (30 ft)	2.8 mm: Detect: 49 m (161 ft) Observe: 20 m (67 ft) Recognize: 10 m (32 ft) Identify: 5 m (16 ft) 4 mm: Detect: 65 m (214 ft) Observe: 27 m (89 ft) Recognize: 13 m (43 ft) Identify: 7 m (21 ft) 6 mm: Detect: 98 m (321 ft) Observe: 41 m (134 ft) Recognize: 20 m (64 ft) Identify: 10 m (32 ft)	2.8 mm: Detect: 60 m (197 ft) Observe: 25 m (82 ft) Recognize: 12 m (39 ft) Identify: 6 m (20 ft) 4 mm: Detect: 80 m (262 ft) Observe: 33 m (109 ft) Recognize: 16 m (52 ft) Identify: 8 m (26 ft) 6 mm: Detect: 120 m (394 ft) Observe: 50 m (164 ft) Recognize: 24 m (79 ft) Identify: 12 m (39 ft)
Angle Adjustment (Manual)			
Range	• Pan: 0° to 360° • Tilt: 0° to 90° • Rotation: 0° to 360°		

Illuminator			
IR LED	<ul style="list-style-type: none">• Quantity: 2• Range: 50m• Wavelength: 850nm		
White LED	N/A		
Illuminator On/Off Control	Auto/Scheduled/Always on/Always off		
Video			
Max. Resolution	2MP (1920 × 1080)	3MP (2304 × 1296)	4MP (2560 × 1440)
Main Stream	Frame Rate: 1fps, 5fps, 10fps, 15fps, 20fps, 25fps, 30fps Resolution: 1920x1080, 1280x960, 1280x720	Frame Rate: 1fps, 5fps, 10fps, 15fps, 20fps, 25fps, 30fps Resolution: 2304x1296, 2048x1280, 1920x1080, 1280x720	Frame Rate: 1fps, 5fps, 10fps, 15fps, 20fps, 25fps, 30fps Resolution: 2560x1440,2304x1296, 2048x1280, 1920x1080, 1280x720
Sub-Stream	Frame Rate: 1fps, 5fps, 10fps, 15fps, 20fps, 25fps, 30fps Resolution: 704x576, 640x480, 352x288, 320x240	Frame Rate: 1fps, 5fps, 10fps, 15fps, 20fps, 25fps, 30fps Resolution: 704x576, 640x480, 352x288, 320x240	Frame Rate: 1fps, 5fps, 10fps, 15fps, 20fps, 25fps, 30fps Resolution: 640x480, 352x288, 320x240
Bit Rate Control	CBR, VBR		
Video Compression	<ul style="list-style-type: none">• Main Stream: H.265+/H.265/H.264+/H.264• Sub-Stream: H.265/H.264		
H.264 Type	High Profile		
H.264+	Main Stream Supported		
H.265 Type	Main Profile		
H.265+	Main Stream Supported		
Video Bit Rate	<ul style="list-style-type: none">• Main Stream: 256 Kbps to 4 Mbps• Sub-Stream: 64 Kbps to 512 Kbps		
Image			
Image Settings	<ul style="list-style-type: none">• Mirror• Brightness• Contrast• Saturation• Sharpness• Exposure• WDR• White Balance• Prevent Overexposure to Infrared Light• HLC Adjustable by Client Software• Rotation(90°/270°)		

Image Enhancement	BLC/3D DNR/HLC/SmartIR
Wide Dynamic Range	DWDR
SNR	≥ 52 dB
Image Parameters Switch	Yes
Privacy Mask	Up to 4 Masks
ROI	1 Region
OSD Setting	Yes
Audio	
Audio Communication	N/A
Audio Input	Yes
Audio Output	N/A
Audio Compression	Yes
Audio Sampling Rate	8KHz
Environment Noise Filtering	Yes
Audio Bit Rate	64 Kbps(G.711 alaw)
Network	
Protocols	TCP/IP, UDP, ICMP, HTTP, HTTPS, DHCP, DNS, RTSP, NTP, UPnP, SSL/TLS, FTP/SFTP, RTP, IPv4, IPv6 (VIGI C320I does not support IPv6), ARP
ONVIF	Yes
API	Open Network Video Interface (Profile S)
Security	Password Protection, HTTPS Encryption, IP Address Filter, Digest Authentication
Simultaneous Live View	3 Main Streams & 3 Sub-Streams
Cloud	Yes
Client	VIGI App, VIGI Security Manager, VIGI NVR, Web
Web Browser	<ul style="list-style-type: none"> • Google Chrome® 57 and above • Firefox® 52 and above • Safari® 11 and above • Microsoft® Edge 91 and above
Alarm and Event Management	
Smart Event	<ul style="list-style-type: none"> • Human & Vehicle Classification • Intrusion Detection • Line-Crossing Detection • Region Entering Detection • Region Exiting Detection • Object Abandoned/Removal Detection • Abnormal Sound Detection • People Detection • Vehicle Detection

Basic Event	<ul style="list-style-type: none">• Motion Detection• Video Tampering Detection• Exception (Illegal Login)		
Alarm Linkage	Message Push		
Linkage Method	N/A		
Output Notification	Message Push		
Interface			
Network Interface	1 RJ45 10/100M Self-Adaptive Ethernet Port		
Alarm	N/A		
Reset Button	N/A		
Power	DC Power Port (VIGI C320I does not have DC power port)		
On-board Storage	N/A		
Built-in Microphone	Yes; Records Anything Going on within a 15-ft Radius of the Camera		
Built-in Speaker	N/A		
Audio	N/A		
General			
Operating Temperature	-30–60 °C		
Power Supply	PoE (802.3af/at, class 0)	12V DC ± 5%, 5.5mm Coaxial Power Plug PoE (802.3af/at, class 0)	12V DC ± 5%, 5.5mm Coaxial Power Plug PoE (802.3af/at, class 0)
Power Consumption	PoE: class 0	12V DC: Max 5W PoE: class 0	12V DC: Max 5W PoE: class 0
Ingression Protection	IP67		
Material	Plastic		
Product Dimensions	78.5 × 188.03 × 71.55 mm (3.09 × 7.40 × 2.82 in)		
Certification	CE/BSMI/VCCI/ONVIF		