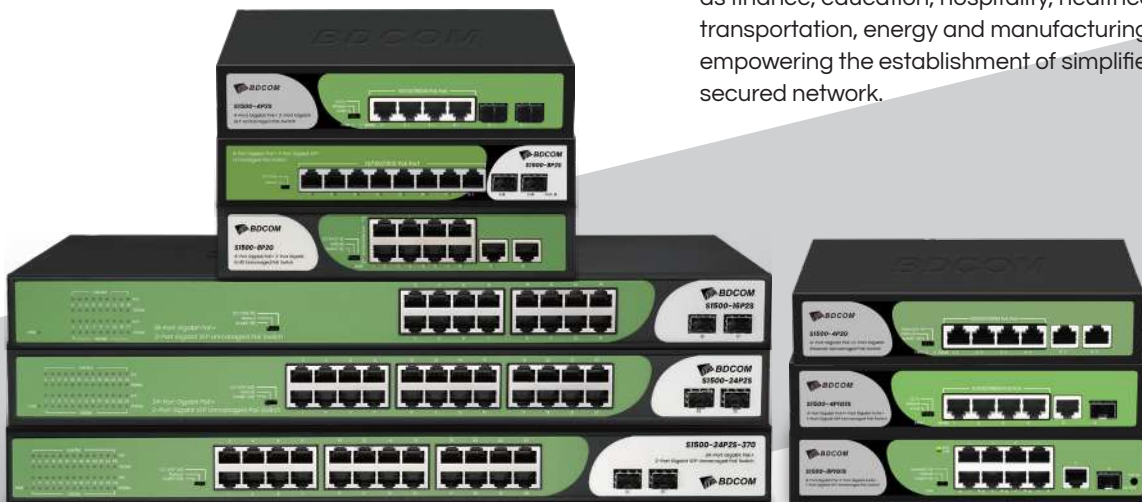


S1500-P Series

Overview

BDCOM S1500-P Series is a multi-functional unmanaged full-gigabit PoE switch with large buffer capacity. The product is primarily applied in access layer of CCTV and WLAN. BDCOM S1500-P Series PoE switches include nine models: S1500-4P2S, S1500-4P2G, S1500-4P1G1S, S1500-8P2S, S1500-8P2G, S1500-8P1G1S, S1500-16P2S, S1500-24P2S, S1500-24P2S-370, catering to the needs of different-scale deployments in multiple industries such as finance, education, hospitality, healthcare, transportation, energy and manufacturing, empowering the establishment of simplified and secured network.



CCTV-Mate

Highlights

Switching Features

- Non-blocking switching architecture, and line-speed forwarding of all ports
- Large buffer design, ensures smooth playback of high-definition videos
- Supports IEEE802.3x full-duplex flow control and Backpressure half-duplex flow control
- Multi-functional DIP modes to meet various networking requirements

Practicability

- Plug and play
- LED indicators to show working status

PoE Features

- Compliant with IEEE802.3af/at standards, with a maximum PoE power of 30W per port
- High-power PoE power supply, supporting full load 802.3af on all ports
- Intelligent standard 48V PoE, negotiating power supply based on terminal type
- Supports short-circuit protection and overcurrent protection

Reliability

- Integrated professional lightning protection circuit, with high-level lightning protection
- Built-in high-quality PoE power supply, ensuring safe and stable PoE output
- Compliant with CE and FCC safety standards

Model

S1500-4P2S



- 4-Port Gigabit PoE+ 2-Port Gigabit SFP
- Built-in AC power supply
- DIP mode:
 - Default - Standard operating mode
 - CCTV – 3 to 4 port extension
 - VLAN – 1 to 4 port isolation
- Dimensions (WxDxH): 200x118x44mm

S1500-4P2G



- 4-Port Gigabit PoE+ 2-Port Gigabit RJ45
- Built-in AC power supply
- DIP mode:
 - Default - Standard operating mode
 - CCTV – 3 to 4 port extension
 - VLAN – 1 to 4 port isolation
- Dimensions (WxDxH): 200x118x44mm

S1500-4P1G1S



- 4-Port Gigabit PoE+ 1-Port Gigabit RJ45 + 1-Port Gigabit SFP
- Built-in AC power supply
- DIP mode:
 - Default - Standard operating mode
 - CCTV – 3 to 4 port extension
 - VLAN – 1 to 4 port isolation
- Dimensions (WxDxH): 200x118x44mm

S1500-8P2S



- 8-Port Gigabit PoE+ 2-Port Gigabit SFP
- Built-in AC power supply
- DIP mode:
 - Default - Standard operating mode
 - CCTV – 7 to 8 port extension
- Dimensions (WxDxH): 200x161x44mm

S1500-8P2G



- 8-Port Gigabit PoE+ 2-Port Gigabit RJ45 Built-in AC power supply
- DIP mode:
 - Default - Standard operating mode
 - CCTV – 7 to 8 port extension
 - VLAN – 1 to 8 port isolation
- Dimensions (WxDxH): 200x118x44mm

S1500-8P1G1S



- 8-Port Gigabit PoE+ 1-Port Gigabit RJ45 + 1-Port Gigabit SFP
- Built-in AC power supply
- DIP mode:
 - Default - Standard operating mode
 - CCTV – 7 to 8 port extension
- Dimensions (WxDxH): 200x161x44mm

Model

S1500-16P2S



- 16-Port Gigabit PoE+ 2-Port Gigabit SFP
- Built-in AC power supply
- DIP mode:
 - Default - Standard operating mode
 - CCTV – 9 to 16 port extension
 - VLAN – 1 to 16 port isolation
- Dimensions (WxDxH): 440x204x44mm

S1500-24P2S



- 24-Port Gigabit PoE+ 2-Port Gigabit SFP
- Built-in AC power supply
- DIP mode:
 - Default - Standard operating mode
 - CCTV – 17 to 24 port extension
 - VLAN – 1 to 24 port isolation
- Dimensions (WxDxH): 440x204x44mm

S1500-24P2S-370



- 24-Port Gigabit PoE+ 2-Port Gigabit SFP
- Built-in AC power supply
- DIP mode:
 - Default - Standard operating mode
 - CCTV – 17 to 24 port extension
 - VLAN – 1 to 24 port isolation
- Dimensions (WxDxH): 440x280x44mm

Specifications

Item	S1500-4P2S	S1500-4P2G	S1500-4P1G1S
Switching capacity	12Gbps	12Gbps	12Gbps
MAC	2K	2K	2K
Buffer size	448Kb	448Kb	448Kb
PoE Port	4 Gigabit	4 Gigabit	4 Gigabit
Uplink RJ45	/	2 Gigabit	1 Gigabit
Uplink SFP	2 Gigabit	/	1 Gigabit
Dimensions (mm)	200x118x44	200x118x44	200x118x44
PoE budget	≤60W	≤60W	≤60W
Item	S1500- 8P2S	S1500-8P2G	S1500-8P1G1S
Switching capacity	20Gbps	20Gbps	20Gbps
MAC	2K	2K	2K
Buffer size	448Kb	448Kb	448kb
PoE Port	8 Gigabit	8 Gigabit	8 Gigabit
Uplink RJ45	/	2 Gigabit	1 Gigabit
Uplink SFP	2 Gigabit	/	1 Gigabit
Dimensions (mm)	220x161x44	220x161x44	220x161x44
PoE budget	≤110W	≤110W	≤110W
Item	S1500-16P2S	S1500-24P2S	S1500-24P2S-370
Switching capacity	36Gbps	52Gbps	52Gbps
MAC	8K	8K	8K
Buffer size	4Mb	4Mb	4Mb
PoE Port	16 Gigabit	24 Gigabit	24 Gigabit
Uplink RJ45	/	/	/
Uplink SFP	2 Gigabit	2 Gigabit	2 Gigabit
Dimensions (mm)	440x204x44	440x204x44	440x280x44
PoE budget	≤180W	≤280W	≤370W
PoE standard	802.3af/at, maximum output of 30W per port		
Power supply	Built-in AC: 100~240V, 50/60Hz		
Working mode	VLAN mode, Default mode, CCTV mode		
Environment requirements	Operating temperature/humidity:0°C-50°C, 10%-90% non-condensing Storage temperature/humidity: -40°C-70°C, 5%-95% non-condensing		
Fan	Fanless		
Lightning protection	4KV		

Ordering Information

S1500-4P2S	4-Port Gigabit PoE+ 2-Port Gigabit uplink SFP Unmanaged PoE Switch, DIP function, built-in AC220V power supply; PoE budget 60W, desktop/rack-mounted installation
S1500-4P2G	4-Port Gigabit PoE+ 2-Port Gigabit uplink RJ45 Unmanaged PoE Switch, DIP function, built-in AC220V power supply; PoE budget 60W, desktop/rack-mounted installation
S1500-4P1G1S	4-Port Gigabit PoE+ 1-Port Gigabit uplink RJ45 + 1-Port Gigabit uplink SFP Unmanaged PoE Switch,DIP function, built-in AC220V power supply; PoE budget 60W, desktop/rack-mounted installation
S1500-8P2S	8-Port Gigabit PoE+ 2-Port Gigabit uplink SFP Unmanaged PoE Switch, DIP function, built-in AC220V power supply; PoE budget 110W, desktop/rack-mounted installation
S1500-8P2G	8-Port Gigabit PoE+ 2-Port Gigabit uplink RJ45 Unmanaged PoE Switch, DIP function, built-in AC220V power supply; PoE budget 110W, desktop/rack-mounted installation
S1500-8P1G1S	8-Port Gigabit PoE+ 1-Port Gigabit uplink RJ45 + 1-Port Gigabit uplink SFP Unmanaged PoE Switch,DIP function, built-in AC220V power supply; PoE budget 110W, desktop/rack-mounted installation
S1500-16P2S	16-Port Gigabit PoE+ 2-Port Gigabit uplink SFP Unmanaged PoE Switch, DIP function, built-in AC220V power supply; PoE budget 180W, desktop/rack-mounted installation
S1500-24P2S	24-Port Gigabit PoE+ 2-Port Gigabit uplink SFP Unmanaged PoE Switch, DIP function, built-in AC220V power supply; PoE budget 280W, rack-mounted installation
S1500-24P2S-370	24-Port Gigabit PoE+ 2-Port Gigabit uplink SFP Unmanaged PoE Switch, DIP function, built-in AC220V power supply; PoE budget 370W, rack-mounted installation