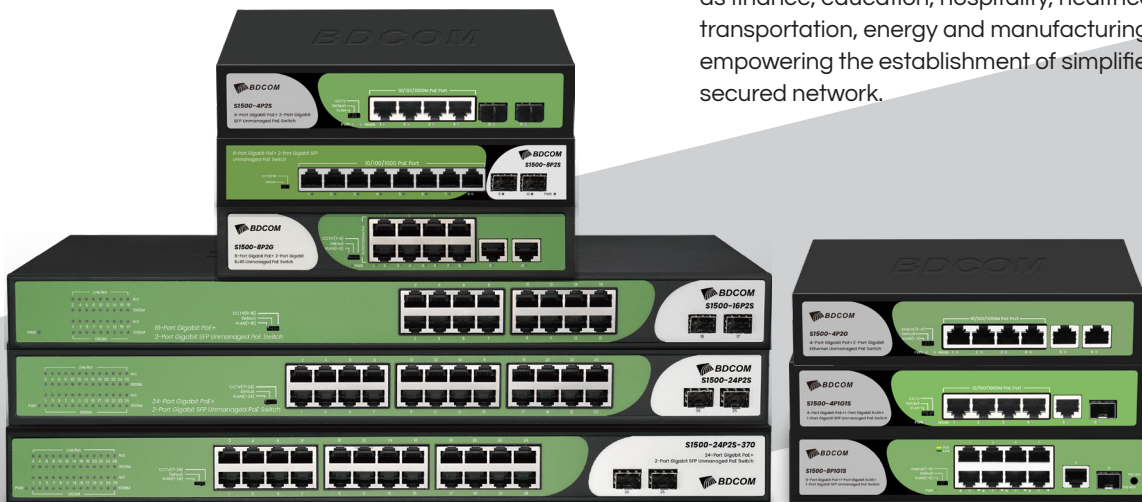


S1500-P Series

Overview

BDCOM S1500-P Series is a multi-functional unmanaged full-gigabit PoE switch with large buffer capacity. The product is primarily applied in access layer of CCTV and WLAN. BDCOM S1500-P Series PoE switches include nine models: S1500-4P2S, S1500-4P2G, S1500-4P1G1S, S1500-8P2S, S1500-8P2G, S1500-8P1G1S, S1500-16P2S, S1500-24P2S, S1500-24P2S-370, catering to the needs of different-scale deployments in multiple industries such as finance, education, hospitality, healthcare, transportation, energy and manufacturing, empowering the establishment of simplified and secured network.



CCTV-Mate

Highlights

Switching Features

- Non-blocking switching architecture, and line-speed forwarding of all ports
- Large buffer design, ensures smooth playback of high-definition videos
- Supports IEEE802.3x full-duplex flow control and Backpressure half-duplex flow control
- Multi-functional DIP modes to meet various networking requirements

Practicability

- Plug and play
- LED indicators to show working status

PoE Features

- Compliant with IEEE802.3af/at standards, with a maximum PoE power of 30W per port
- High-power PoE power supply, supporting full load 802.3af on all ports
- Intelligent standard 48V PoE, negotiating power supply based on terminal type
- Supports short-circuit protection and overcurrent protection

Reliability

- Integrated professional lightning protection circuit, with high-level lightning protection
- Built-in high-quality PoE power supply, ensuring safe and stable PoE output
- Compliant with CE and FCC safety standards

Model

S1500-4P2S



- 4-Port Gigabit PoE+ 2-Port Gigabit SFP
- Built-in AC power supply
- DIP mode:
 - Default - Standard operating mode
 - CCTV – 3 to 4 port extension
 - VLAN – 1 to 4 port isolation
- Dimensions (WxDxH): 200x118x44mm

S1500-4P2G



- 4-Port Gigabit PoE+ 2-Port Gigabit RJ45
- Built-in AC power supply
- DIP mode:
 - Default - Standard operating mode
 - CCTV – 3 to 4 port extension
 - VLAN – 1 to 4 port isolation
- Dimensions (WxDxH): 200x118x44mm

S1500-4P1G1S



- 4-Port Gigabit PoE+ 1-Port Gigabit RJ45 + 1-Port Gigabit SFP
- Built-in AC power supply
- DIP mode:
 - Default - Standard operating mode
 - CCTV – 3 to 4 port extension
 - VLAN – 1 to 4 port isolation
- Dimensions (WxDxH): 200x118x44mm

S1500-8P2S



- 8-Port Gigabit PoE+ 2-Port Gigabit SFP
- Built-in AC power supply
- DIP mode:
 - Default - Standard operating mode
 - CCTV – 7 to 8 port extension
- Dimensions (WxDxH): 200x161x44mm

S1500-8P2G



- 8-Port Gigabit PoE+ 2-Port Gigabit RJ45 Built-in AC power supply
- DIP mode:
 - Default - Standard operating mode
 - CCTV – 7 to 8 port extension
 - VLAN – 1 to 8 port isolation
- Dimensions (WxDxH): 200x118x44mm

S1500-8P1G1S



- 8-Port Gigabit PoE+ 1-Port Gigabit RJ45 + 1-Port Gigabit SFP
- Built-in AC power supply
- DIP mode:
 - Default - Standard operating mode
 - CCTV – 7 to 8 port extension
- Dimensions (WxDxH): 200x161x44mm

Model

S1500-16P2S



- 16-Port Gigabit PoE+ 2-Port Gigabit SFP
- Built-in AC power supply
- DIP mode:
 - Default - Standard operating mode
 - CCTV – 9 to 16 port extension
 - VLAN – 1 to 16 port isolation
- Dimensions (WxDxH): 440x204x44mm

S1500-24P2S



- 24-Port Gigabit PoE+ 2-Port Gigabit SFP
- Built-in AC power supply
- DIP mode:
 - Default - Standard operating mode
 - CCTV – 17 to 24 port extension
 - VLAN – 1 to 24 port isolation
- Dimensions (WxDxH): 440x204x44mm

S1500-24P2S-370



- 24-Port Gigabit PoE+ 2-Port Gigabit SFP
- Built-in AC power supply
- DIP mode:
 - Default - Standard operating mode
 - CCTV – 17 to 24 port extension
 - VLAN – 1 to 24 port isolation
- Dimensions (WxDxH): 440x280x44mm

Specifications

| Item | S1500-4P2S | S1500-4P2G | S1500-4P1G1S |
|--------------------------|--|-------------|-----------------|
| Switching capacity | 12Gbps | 12Gbps | 12Gbps |
| MAC | 2K | 2K | 2K |
| Buffer size | 448Kb | 448Kb | 448Kb |
| PoE Port | 4 Gigabit | 4 Gigabit | 4 Gigabit |
| Uplink RJ45 | / | 2 Gigabit | 1 Gigabit |
| Uplink SFP | 2 Gigabit | / | 1 Gigabit |
| Dimensions (mm) | 200x118x44 | 200x118x44 | 200x118x44 |
| PoE budget | ≤60W | ≤60W | ≤60W |
| Item | S1500- 8P2S | S1500-8P2G | S1500-8P1G1S |
| Switching capacity | 20Gbps | 20Gbps | 20Gbps |
| MAC | 2K | 2K | 2K |
| Buffer size | 448Kb | 448Kb | 448kb |
| PoE Port | 8 Gigabit | 8 Gigabit | 8 Gigabit |
| Uplink RJ45 | / | 2 Gigabit | 1 Gigabit |
| Uplink SFP | 2 Gigabit | / | 1 Gigabit |
| Dimensions (mm) | 220x161x44 | 220x161x44 | 220x161x44 |
| PoE budget | ≤110W | ≤110W | ≤110W |
| Item | S1500-16P2S | S1500-24P2S | S1500-24P2S-370 |
| Switching capacity | 36Gbps | 52Gbps | 52Gbps |
| MAC | 8K | 8K | 8K |
| Buffer size | 4Mb | 4Mb | 4Mb |
| PoE Port | 16 Gigabit | 24 Gigabit | 24 Gigabit |
| Uplink RJ45 | / | / | / |
| Uplink SFP | 2 Gigabit | 2 Gigabit | 2 Gigabit |
| Dimensions (mm) | 440x204x44 | 440x204x44 | 440x280x44 |
| PoE budget | ≤180W | ≤280W | ≤370W |
| PoE standard | 802.3af/at, maximum output of 30W per port | | |
| Power supply | Built-in AC: 100~240V, 50/60Hz | | |
| Working mode | VLAN mode, Default mode, CCTV mode | | |
| Environment requirements | Operating temperature/humidity:0°C-50°C, 10%-90% non-condensing Storage temperature/humidity: -40°C-70°C, 5%-95% non-condensing | | |
| Fan | Fanless | | |
| Lightning protection | 4KV | | |