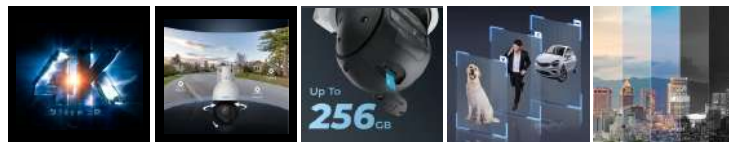


Reolink

REOLINK P840 SMART 4K PTZ POE SECURITY CAMERA WITH 5X OPTICAL ZOOM



Overview

Why Reolink P840 ?

The Reolink P840 is a 4K PTZ (Pan-Tilt-Zoom) PoE (Power over Ethernet) security camera designed to provide comprehensive surveillance with high-resolution imaging and versatile features

High-Resolution Imaging

5X Optical Zoom

Two-Way Audio Communication

Pan and **Tilt** Capabilities

Auto Tracking

Color Night Vision

Smart Home Integration

Flexible Storage Options

Weatherproof Design

Time Lapse stunning time-lapse videos through

4K

4K Resolution

See every detail with this 4K battery camera, whether you're monitoring your home, yard, or business.



AI Analysis

The algorithm analyzes significant movement patterns, ensuring that you receive alerts. motion detection; person detection; vehicle detection; animal detection



Color Night Vision

Equipped with spotlights, it delivers full-color live feeds day and night. Black & white night vision supported by IR LEDs is also available.



Auto-Tracking

Automatically pan 355°, tilt 50° to focus on the moving target



Two-Way Audio

Real-time communication with built-in mic & speaker.



Time Lapse

Watch long-term processes like birthdays, plant growth, and construction in an enjoyable short video

Pan, Tilt & ZOOM 360° Big Coverage



Flexibel Storage Options

microSD Card
Up to
256GB



Works with
Reolink NVR/FTP/NAS
24/7
Recording

5x 3D Optical Zoom

16X
5x Optical Zoom

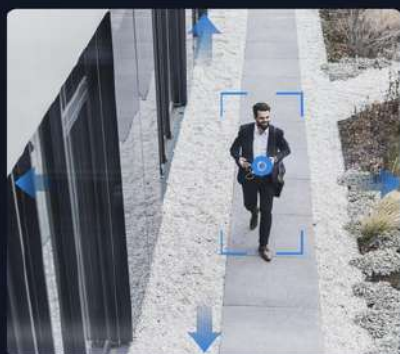
3D
3D Zoom



Auto Tracking & Preset Points

1.4°-90°/s
Pan (Horizontal)

1.4°-56°/s
Tilt (Vertical)



4K Colorful Videos Day & Night



Weatherproof Design



Smart Person / Vehicle Animal Detection



Video & Audio

Image Sensor

1/2.8" CMOS sensor

Resolution

3840x2160 (8 megapixels)
@25fps

Lens

f=2.7-13.5mm/Max. F1.6

Video Compression

H.264/H.265

Zoom

5x Optical zoom

Field of View

Horizontal: 100°-31°
Vertical: 55°-17°

Infrared Night Vision

Up to 60 meters(196ft); LED:
7pcs/Max 5.5W/850nm (Auto-
switching with IR-cut filter)

Color Night Vision

With spotlights:
2pcs/4w/4000K (Adjustable)

Frame Rate

Main stream: 2fps - 25fps
Sub stream: 4fps - 15fps

Code Rate

Main stream: 2048Kbps -
8192Kbps (default: 6144Kbps)
Sub stream: 64Kbps - 512Kbps
(default: 512Kbps)

Audio

Two-way audio

Pan&Tilt

PT Angle(Max.)

Pan: 360°, Tilt: 90°

Pan Speed

1.4°-90°/s (configurable)

Tilt Speed

1.4°-56°/s (configurable)

Preset Points

Supports 1 guard position &
up to 64 preset positions

Patrol

Supports 1 patrol; up to 16
presets per patrol

Power-off Memory Function

Supports

Auto Tracking

Yes

Interface

Power Port

DC power port

Ethernet Ports

One 10M/100Mbps; RJ45

SD Card Slot

Supports Max. 512GB
microSD card

Reset Button

YES

Audio In/Out

Built-in microphone and
speaker

Software

Browsers Supported

Edge, Chrome, Firefox, Safari

OS Supported

PC: Windows, Mac OS;
Smartphone: iOS, Android

Protocols & Standards

HTTPS, SSL, TCP/IP, UDP,
HTTP, IPv4, UPnP, RTSP, RTMP,
ONVIF, SMTP, NTP, DHCP,
DNS, DDNS, FTP, P2P

User Access

Max. 20 users (1 admin & 19
users); Max. 12 simultaneous
streams (2 main & 10
substreams)

Other Features

Smart Alarm

Motion detection; person
detection; vehicle detection;
animal detection

Recording Modes

Motion-triggered recording
(default); Scheduled recording,
24/7 recording

Time Lapse

YES

Smart Home Compatibility

Google Assistant

Power

PoE

IEEE 802.3at, 48V, active

DCDC

12V=2A, <24W

Working Environment

Operating Temperature

-10°C~50°C (14°F~126°F)

Operating Humidity

10% ~ 90%

Weatherproof

IP66

Mechanical

Dimensions

373*177*140mm (Ceiling
Mount)

Weight

2.34kg

Warranty

Limited Warranty

2-year limited warranty. For
support, visit
<https://support.reolink.com/hc/en-us/>.



- 1 . Bracket
- 2 . Daylight Sensor
- 3 . Lens
- 4 . 7 IR LEDs

- 5 . Spotlight
- 6 . Reset Button
- 7 . microSD Card Slot
- 8 . Speaker

- 1 . Power
- 2 . Network
- 3 . Waterproof Lid