

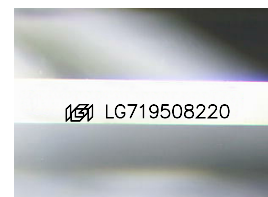
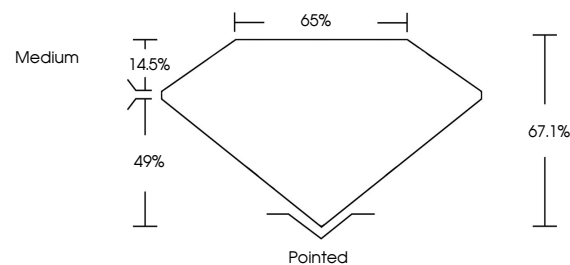


ELECTRONIC COPY

LABORATORY GROWN DIAMOND REPORT

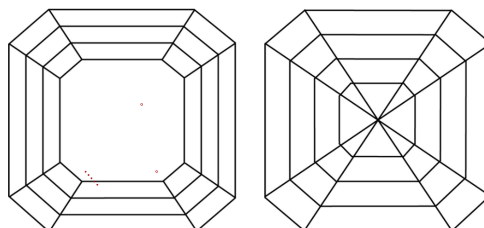
LG719508220
Report verification at igi.org

PROPORTIONS



Sample Image Used

CLARITY CHARACTERISTICS



KEY TO SYMBOLS

Red symbols indicate internal characteristics.
Green symbols indicate external characteristics.

COLOR

D E F G H I J Faint Very Light Light

CLARITY

IF VWS¹⁻² VS¹⁻² SI¹⁻² I¹⁻³

Internally Flawless	Very Very Slightly Included	Very Slightly Included	Slightly Included	Included
------------------------	--------------------------------	---------------------------	----------------------	----------

LABORATORY GROWN DIAMOND REPORT



June 24, 2025

IGI Report Number **LG719508220**Description **LABORATORY GROWN DIAMOND**

Shape and Cutting Style **SQUARE EMERALD CUT**

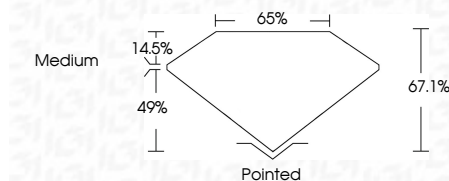
Measurements 5.69 X 5.66 X 3.80 MM

GRADING RESULTS

Carat Weight **1.10 CARAT**

Color Grade	D
-------------	---

Clarity Grade VS 1



ADDITIONAL GRADING INFORMATION

Polish **EXCELLENT**Symmetry **EXCELLENT**Fluorescence **NONE**Inscription(s) LG719508220

Comments: This Laboratory Grown Diamond was created by Chemical Vapor Deposition (CVD) growth process.
Type IIa



June 24, 2025	GI Report No LG719508220	1.10 CARAT	D	Vs 1	67.1%	65%	Medium	Pointed	EXCELLENT	EXCELLENT	NONE	lg81 LG719508220	Comments: The Laboratory Grown Diamond was created by Chemical Vapor Deposition (CVD) growth process. Type IIG
	SQUARE EMERALD CUT	4.67 x 5.65 x 3.80 MM	Carat Weight	Color Grade	Clarity Grade	Depth	Table	Girdle	Culet	Pash	Symmetry	Fluorescence	



THIS DOCUMENT WAS PRODUCED WITH THE FOLLOWING SECURITY MEASURES: SPECIAL DOCUMENT PAPER, INK SCREENS, WATERMARK, BACKGROUND DESIGNS, HOLOGRAM AND OTHER SECURITY FEATURES NOT LISTED AND DO EXCEED DOCUMENT SECURITY INDUSTRY GUIDELINE