

FOR LEASE

ATLANTIC  
COMMERCIAL  
REAL ESTATE  
BROKERAGE



Harrisville Road Exit

Molson

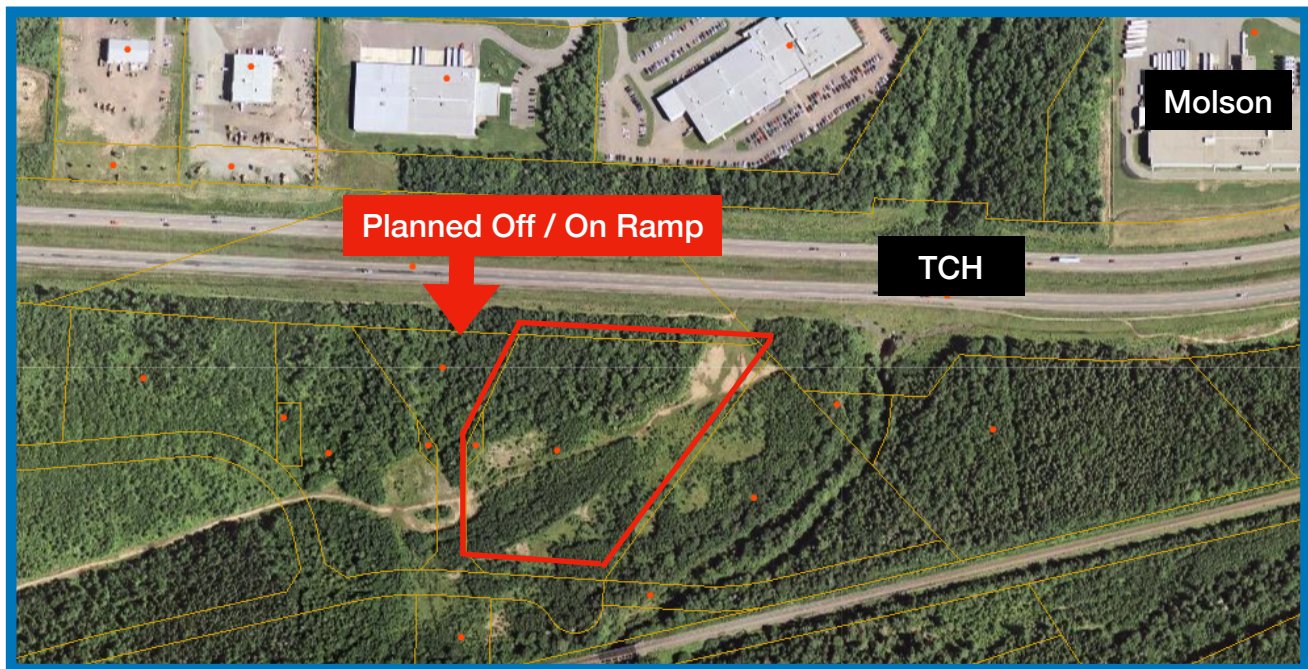
TCH

TIM LYONS  
MANAGING DIRECTOR

Mobile: (506) 295-5400

653 St. George Blvd  
Suite 450  
Moncton, NB E1E-2C2  
Tel: 506-295-5400  
[Tim.Lyons@acreb.ca](mailto:Tim.Lyons@acreb.ca)  
[www.acreb.ca](http://www.acreb.ca)

## COMMERCIAL BUILDING LOT - Moncton, NB



## PRIME COMMERCIAL LOCATION

- |          |                                  |
|----------|----------------------------------|
| Address  | • 300 De Fiedmont St. Moncton NB |
| Lot Size | • ~ 8 acres                      |
| Zoning   | • Highway - Commercial           |
| PID #    | • 70640545                       |

### Potential Uses

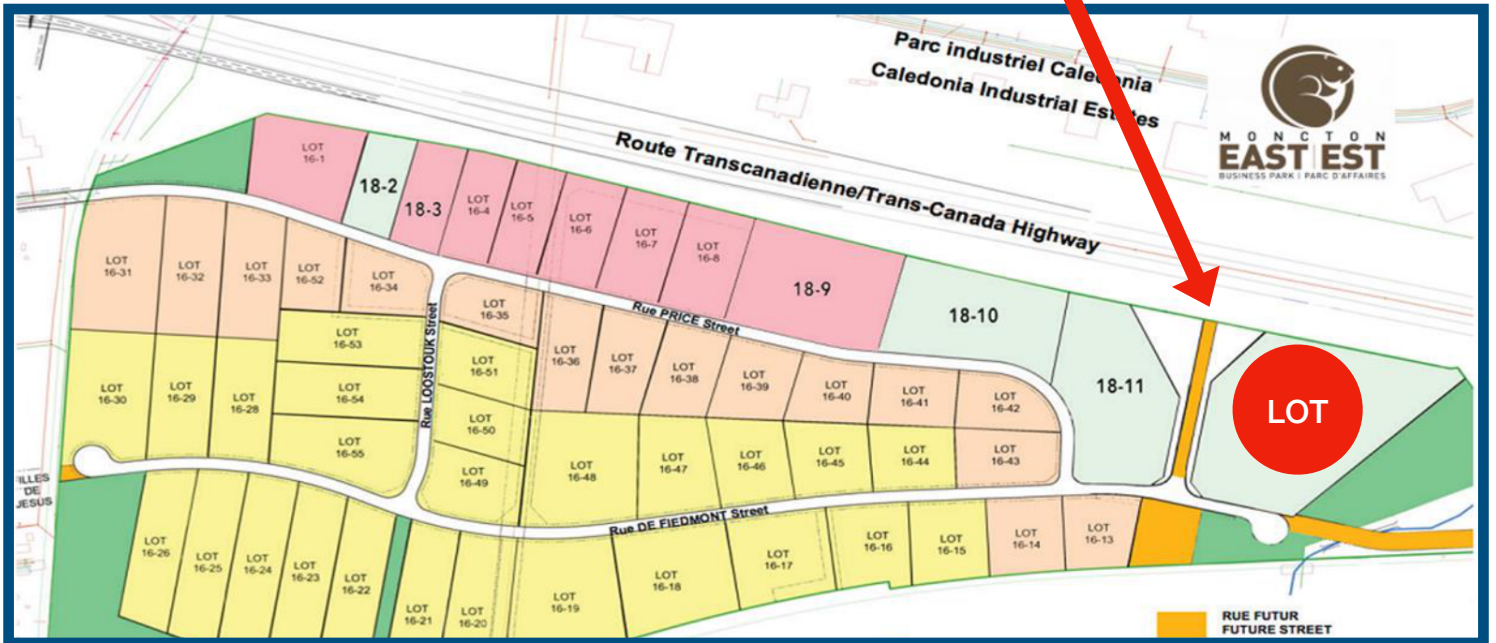
- |               |                 |
|---------------|-----------------|
| Hotel / Motel | Vehicle Service |
| Gas Station   |                 |
| Restaurant    |                 |







Site of future  
off/on-ramp to TCH



## TIM LYONS

Managing Director | Mobile: 506-295-5400

653 St. George Blvd.  
Suite 450  
Moncton, NB E1C 2C2

Tel: 506-295-5400  
sales@acreb.ca  
www.acreb.ca

**ATLANTIC  
COMMERCIAL  
REAL ESTATE  
BROKERAGE**

