

TECHNICAL SPECIFICATIONS



dr. phillips center

FOR THE PERFORMING ARTS

STEINMETZ HALL

Dr. Phillips Center for the Performing Arts

155 East Anderson Street.

Orlando, FL 32801

Main Office (407) 839 0119 (M-F 8:30A-5:30P)

Box Office (844) 513-2014

Table of Contents

<u>GENERAL CONTACT INFORMATION</u>	<u>3</u>
<u>MAP & DIRECTIONS</u>	<u>4</u>
<u>TRUCK, BUS & VEHICLE PARKING</u>	<u>5</u>
<u>LOADING DOCK INFO</u>	<u>6</u>
<u>STEINMETZ HALL CONFIGURATIONS</u>	<u>7</u>
<u>SEATING INFORMATION AND CAPACITY</u>	<u>8</u>
<u>SEATING OVERVIEW AND CHARTS</u>	<u>9</u>
<u>STAGE SPECIFICATIONS</u>	<u>17</u>
<u>ORCHESTRA PIT / EQUIPMENT</u>	<u>18</u>
<u>ORCHESTRA RISERS</u>	<u>19</u>
<u>CENTERLINE SECTION DRAWING</u>	<u>20</u>
<u>RIGGING SPECIFICATIONS / OBSTACLES</u>	<u>21</u>
<u>HANGING PLOT / LINE SCHEDULE</u>	<u>22</u>
<u>SOUND AND COMMUNICATIONS</u>	<u>25</u>
<u>LIGHTING INFORMATION</u>	<u>29</u>
<u>LIGHTING EQUIPMENT</u>	<u>30</u>
<u>STEINMETZ HALL REP PLOT - PROSCENIUM</u>	<u>32</u>
<u>STEINMETZ HALL REP PLOT - CONCERT</u>	<u>33</u>
<u>DRESSING ROOM / GREEN ROOM INFORMATION</u>	<u>34</u>
<u>BACKSTAGE MAPS</u>	<u>35</u>

Contacts at the Dr. Phillips Center for Performing Arts

PRODUCTION STAFF

Production Team	productionmanagement@drphillipscenter.org
-----------------	--

STAGE LABOR – I.A.T.S.E. Local 631

The Dr. Phillips Center for the Performing Arts employs members of I.A.T.S.E. Local 631 for all productions in Steinmetz Hall, except Hair and Make-Up, which is Local 798. For further information, please contact Production Management for labor rates and work rules.

Head Carpenter	sh.carp@drphillipscenter.org
Head Electrician	sh.lighting@drphillipscenter.org
Head Audio	sh.audio@drphillipscenter.org
Head Flyman	sh.flyman@drphillipscenter.org
Head Props	sh.props@drphillipscenter.org
Head Wardrobe	sh.wardrobe@drphillipscenter.org

ADDITIONAL CONTACTS INFORMATION

Guest Services Team	fohadvance@drphillipscenter.org
Food and Beverage Team	foodbeveragemanagement@dpc.org
Security Team	security@drphillipscenter.org

Map and Directions

The Dr. Phillips Center is conveniently located in Downtown Orlando and can be reached by several routes.

Address

155 East Anderson Street
Orlando, FL 32801

The Dr. Phillips Center is conveniently located in Downtown Orlando and can be reached by several routes.

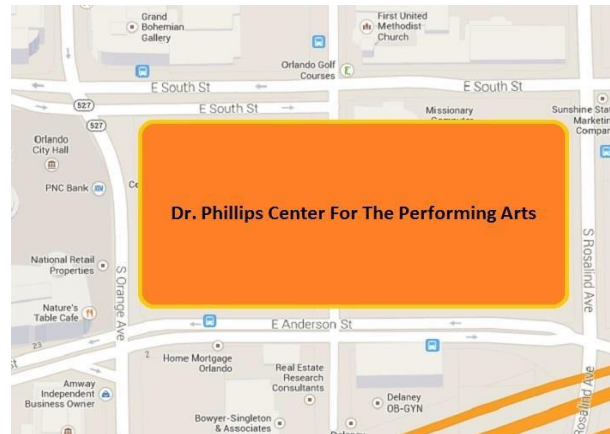
Driving Directions from I-4:

Coming From the West on I-4:

- Take I-4 East to South Street (Exit 82B)
- (Exit curves right)
- Right onto South Street
- Right onto Orange Avenue

Coming From the East on I-4:

- Take I-4 West
- Exit #82C Anderson Street
- Left on Anderson Street
- Left onto S. Rosalind Avenue



Driving Directions from 408 (East-West Expressway):

Coming Eastbound on 408 (East-West Expressway):

- 408 East to I-4 East – toward Daytona Beach (Exit 10A)
- Take the Anderson Street exit (Exit 82C)

Coming From the West on 408 (East-West Expressway):

- 408 West to the Rosalind Avenue exit (Exit 11A)
- Turn Left onto South Street

Trucks going to Loading Dock:

From S. Orange Avenue turn Left onto E. Anderson Street and then turn second left onto S. Rosalind Avenue. The entrance to the lot is on your left. Push the buzzer to contact guard. Identify yourself and a guard will let you enter.

General Parking Instructions:

(If traveling South on S. Orange Ave., Turn Right onto South Street then follow the directions below)

- Turn Left onto Boone Avenue
- Turn Right into the City Commons Parking garage (across the street from City Hall). This garage charges a fee.

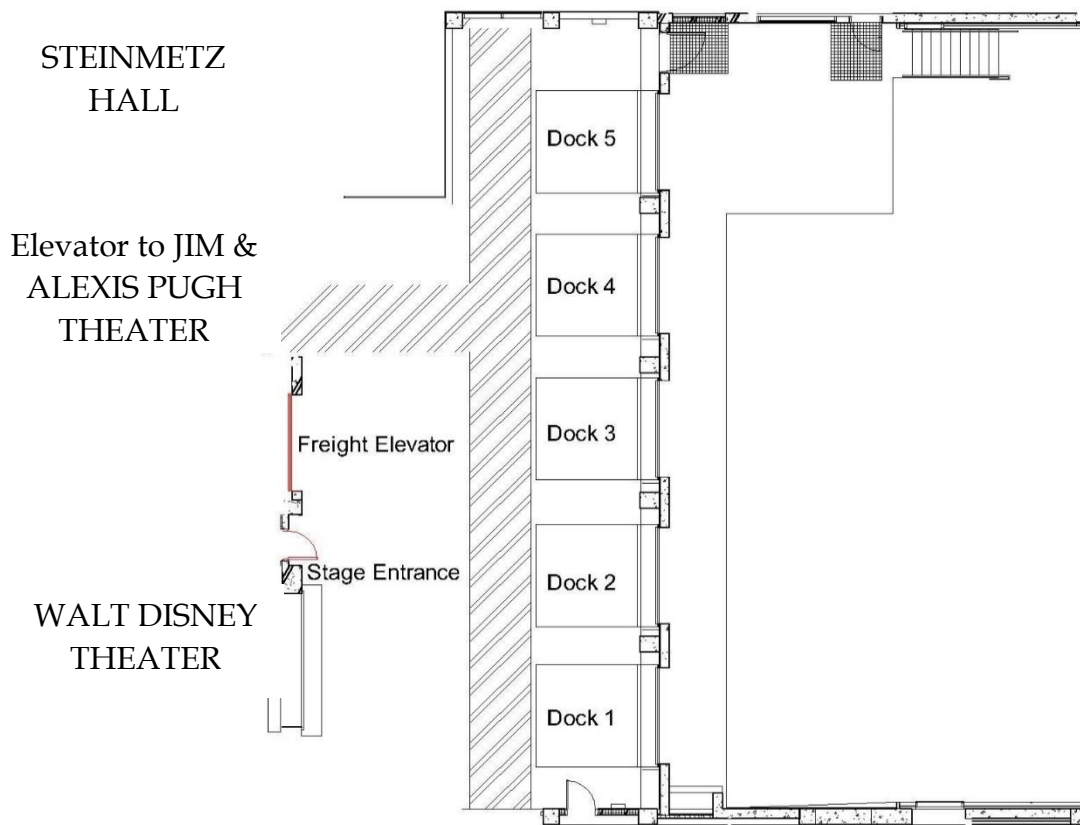
Truck, Bus, and Vehicle Parking

Truck and Bus parking on site is limited. Please inquire with DPC Production Manager prior to arrival. There is only parking available directly backstage for 2 production vehicles. However, parking is available for other cars in the parking garages located across the streets from the theater. All parking arrangements must be discussed with a Production Manager prior to the event for necessary passes and badges.



Loading Docks

The loading docks are located in the rear of the building off South Rosalind Ave. There are five loading bays. The Loading Docks are 4' high and all have deck levelers. The doors are 8'w x 12'h with 2,668 square feet of receiving area. Doors from receiving area to the stage are 13' W x 16'H. A 50a shore power connection is available at Bay 1 and Bay 5. Only 2 bays may be occupied after load-in, with confirmation during the Advance Call.



Steinmetz Hall Configurations

Below is a brief synopsis of the various configurations Steinmetz Hall can provide.

The **STAGE** House has two configurations –

- **Proscenium**: A 50'w x 44'h portal separates the Stage from the House. The stage itself is 55' deep and with a grid 110' overhead. Multiple line-sets allow scenery, lighting, and other elements to fly in and out of view.
- **Concert**: Two 10'-6" deep towers are inserted between the "cassette" and the facility walls connecting to the House. In this configuration it is possible to walk a circle on each tier level. There is the potential for seating (audience or cast) on the Grand and Center Tiers on the towers as well as the cassette. [Typically, the speaker arrays would be removed (left & right are flown out into storage). A PA system remains usable for curtain speeches and general announcements.

HOUSE Levels:

- **Orchestra Level**: This level is made of up twenty risers that move on Gala lifts. Generally seating rows on these risers are accessible from Doors 1-4. The risers and rotating seating create flexibility, and much confusion. Rows start at AAA and continue to O.
- **Orchestra Terrace**: This is fixed seating on the ground floor and includes rows P-U.
- **Grand Tier**: This is the next level up, accessible from Doors 5 & 6 on the second floor as accessible from the elevator.
- **Center Tier**: This is the middle seating level accessible from Doors 7 & 8 on the third floor as accessible from the elevator.
- **Upper Tier**: This is the top seating level accessible from Doors 9 & 10 on the fourth floor.

Seating Information and Capacity

(MAXIMUM Seating Capacity is 1764 Seat (See seating map on following pages)

Orchestra*

AAA – CCC (small extension/pit)	78
AA – BB (large extension/pit)	57
A – O	373
P – U	292
Boxes 3 & 4	12

Upper Tier

A – H (including “gallery” seats)	372
-----------------------------------	-----

Grand Tier

A – D	182
Boxes 5 – 14	44
A – B, Chorus/ Cassette	94

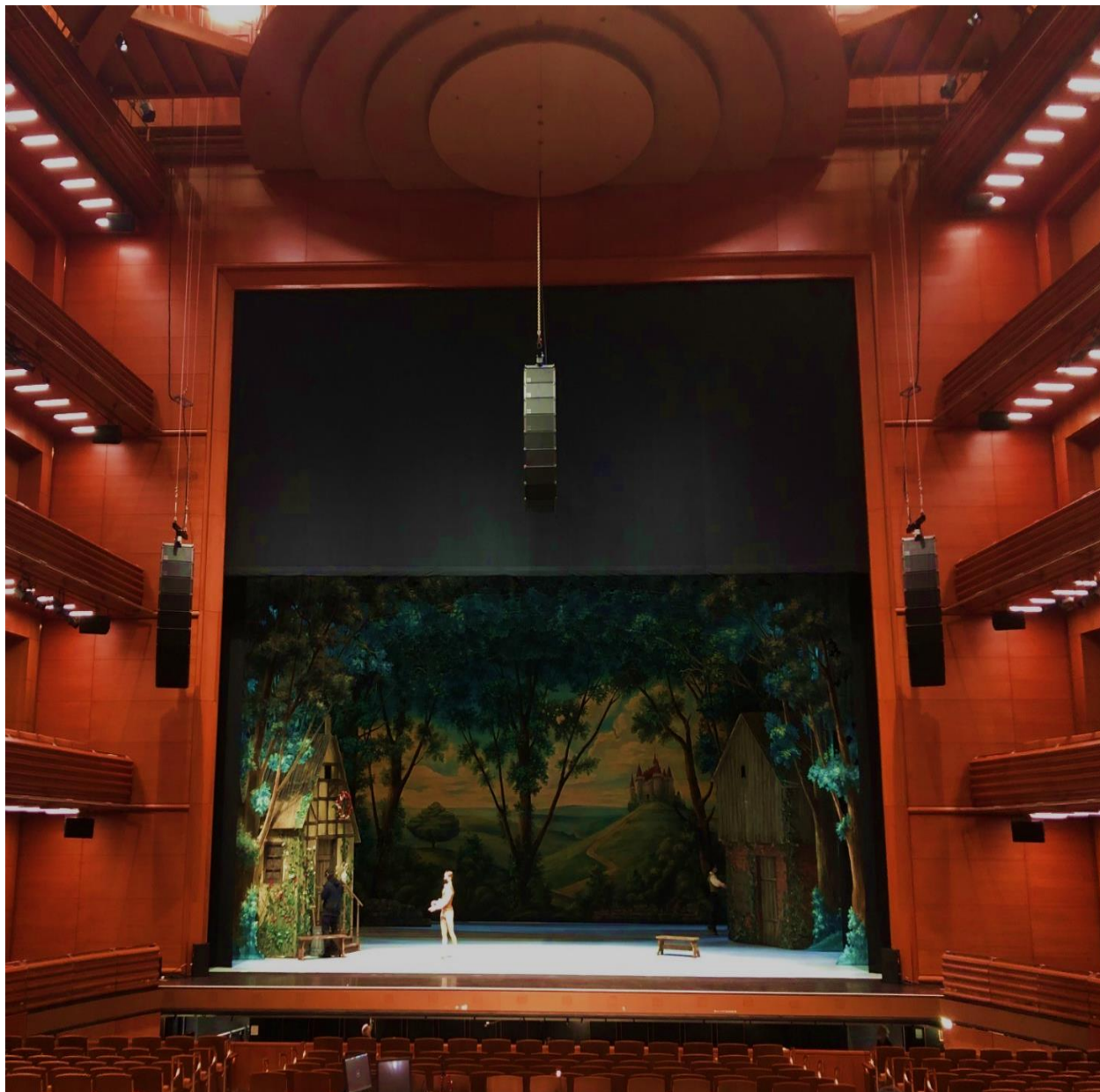
Center Tier

A – D	182
Boxes 5 – 14	44
A – B, Chorus/ Cassette	34

The **Orchestra Level** seating has multiple, designed configurations -

- **Full Seating:** All seats are up and in a tiered fashion - rows AAA, BBB, CCC, AA, BB and A-O. The front seating row is AAA. A short knee wall sits in front of this row with front-fill speakers in the face of the stage that are usable for sound reinforcement. Row AAA seats 1 & 101 (House Left) and 114 & 2 (House Right) may be removed to provide space to install steps from the House directly to the stage. [Notice prior to load-in is required to make this change.]
- **Small Extension:** The first three rows of seats – AAA, BBB & CCC – are flipped under the risers and the risers are brought to the stage level. The first row of seating in this configuration is row AA with a tall knee wall in front of the stage; there are no front-fill speakers installed. Direct House-Stage stairs are not easily achieved.
- **Large Extension:** The first five rows of seats – AAA, BBB, CCC, AA and BB – are flipped under the risers and the risers are brought to the stage level. The first row of seating in this configuration is A with a tall knee wall in front of the stage; there are no front-fill speakers installed. Row A seats 1 & 101 (House Left) and 114 & 2 (House Right) may be removed to provide space to install steps from the House directly to the stage. [Notice prior to load-in is required to make this change.]
- **Small Pit:** Similar to Small Extension from a seating perspective, the first three rows are lowered below the House seating level for use by an orchestra/band. A short knee wall is installed in front of the first row, AA, that allows view of the orchestra. A 40% open house shroud is available to be placed over the pit.
- **Large Pit:** Similar to Large Extension from a seating perspective, the first five (5) rows are lowered for use by an orchestra/band. A short knee wall is installed in front of the first row, A, that allows view of the orchestra. A 40% open house shroud is available to be placed over the orchestra.

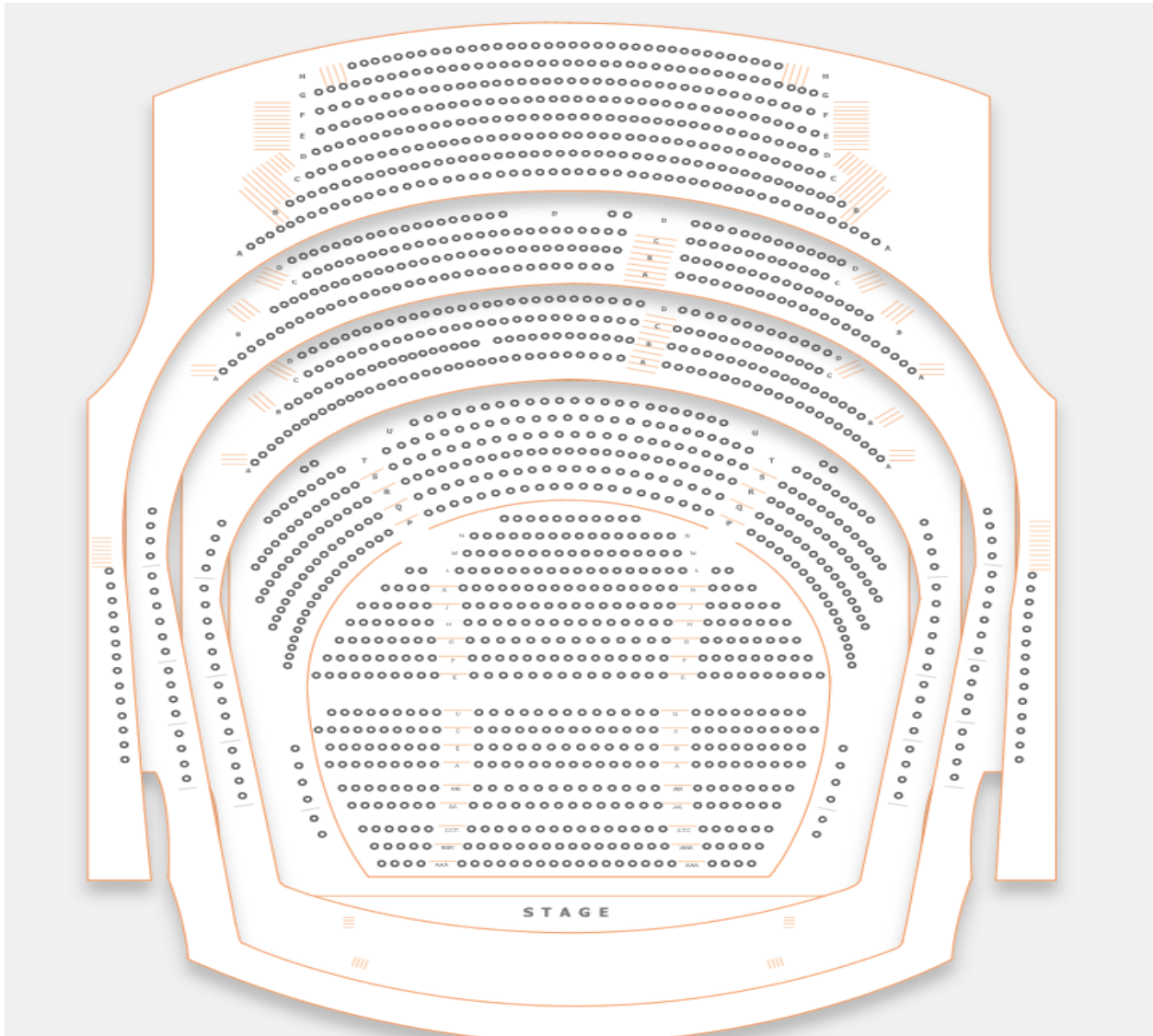
Proscenium Configuration



Above is a view of Steinmetz Hall in Proscenium Configuration with Small Pit. This picture is taken from the center of Row P of the Orchestra Terrace.

Seating Overview

Proscenium Configuration with Full Seating

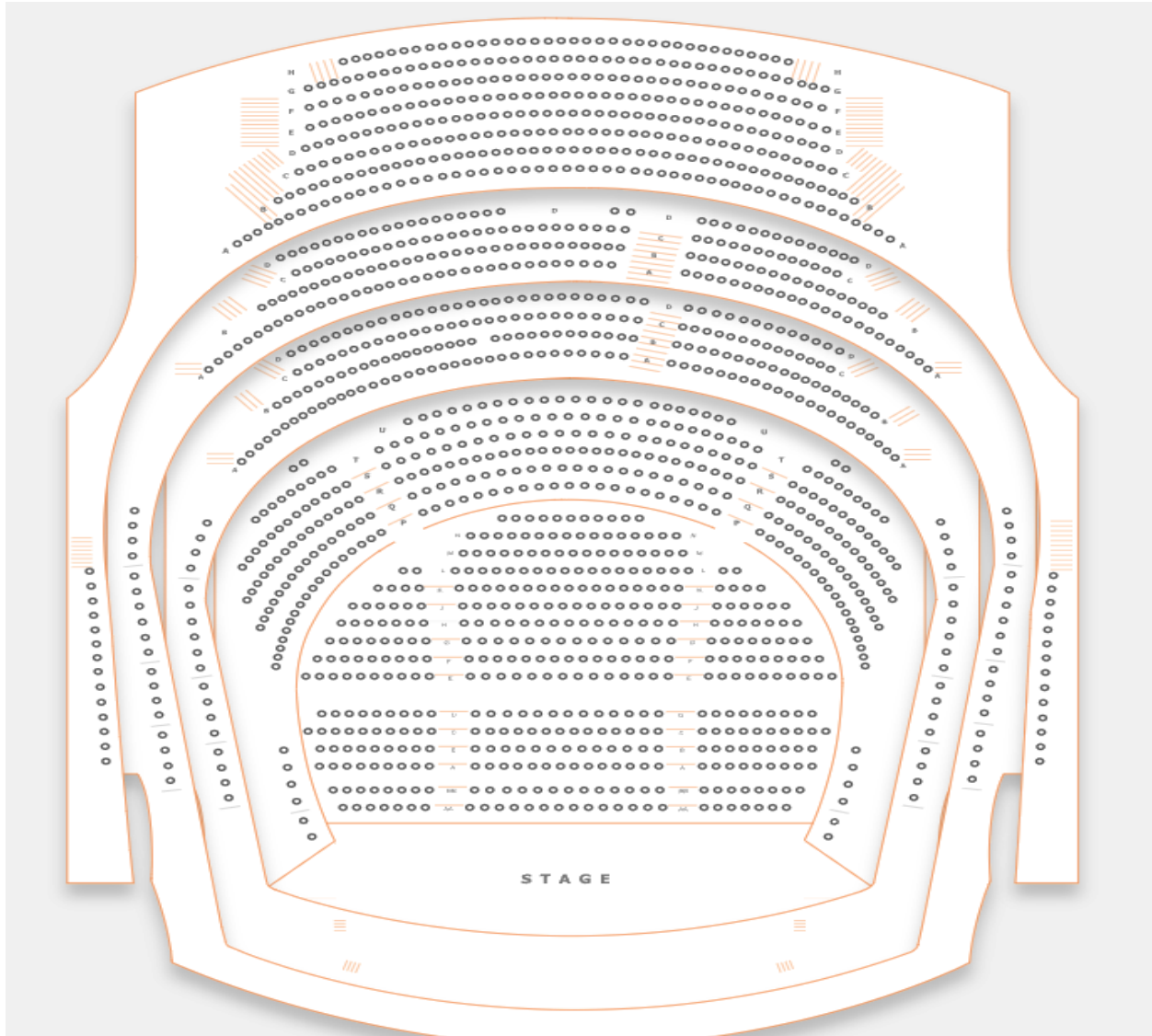


(Boxes 5, 6, 15 & 16 are not available)

The use of Speakers and/or Lighting Boom positions make the boxes on Center and Upper Tier unusable

Seating Overview

Proscenium Configuration with Small Extension or Pit



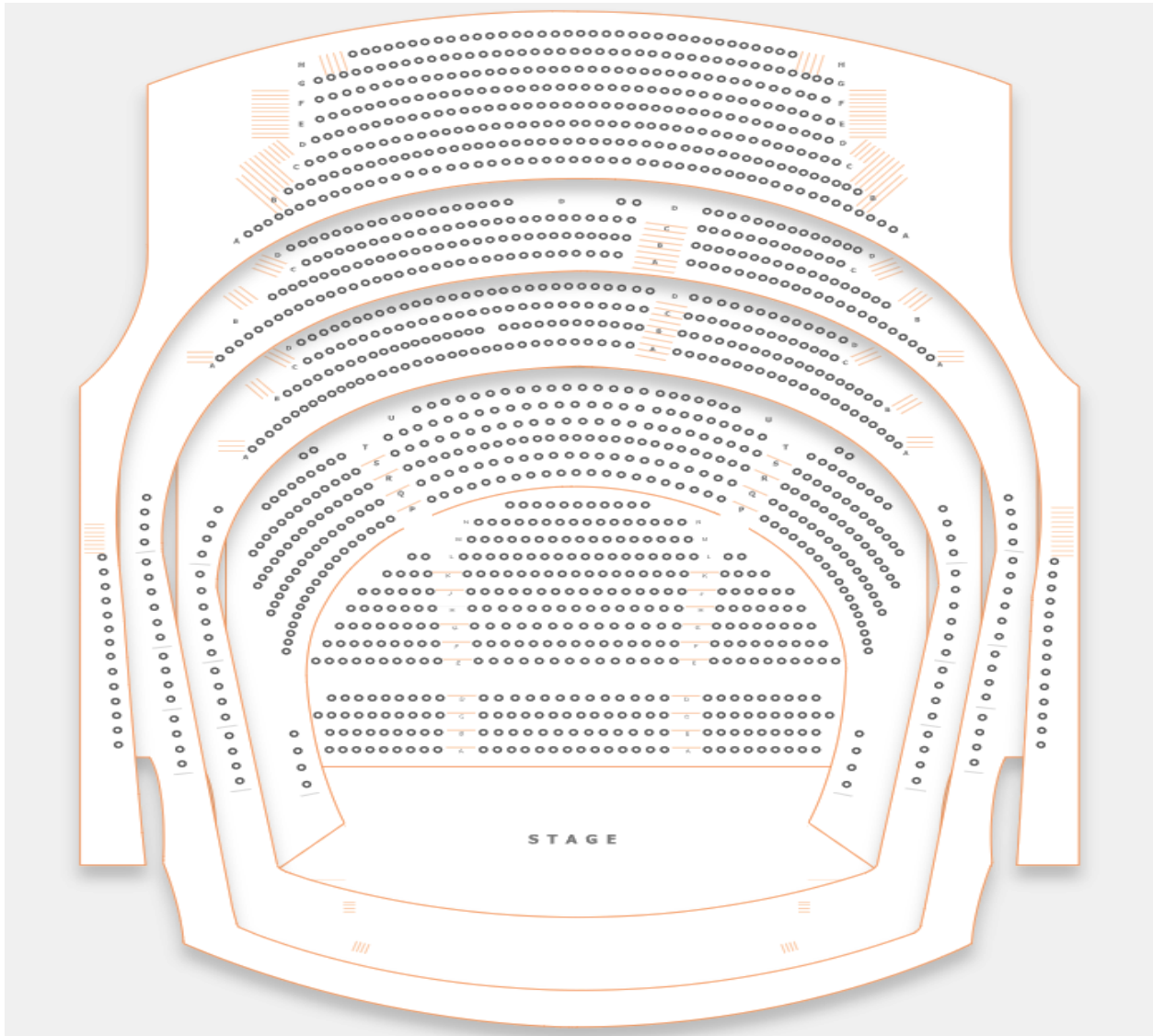
(Rows AAA, BBB, CCC are not available or shown)

(Boxes 5, 6, 15 & 16 are not available)

The use of Speakers and/or Lighting Boom positions make the boxes on
Center and Upper Tier unusable

Seating Overview

Proscenium Configuration with Large Extension or Pit



(Rows AAA, BBB, CCC, AA & BB are not available or shown)

(Boxes 1, 2, 5, 6, 15 & 16 are not available)

The use of Speakers and/or Lighting Boom positions make the boxes on Center and Upper Tier unusable.

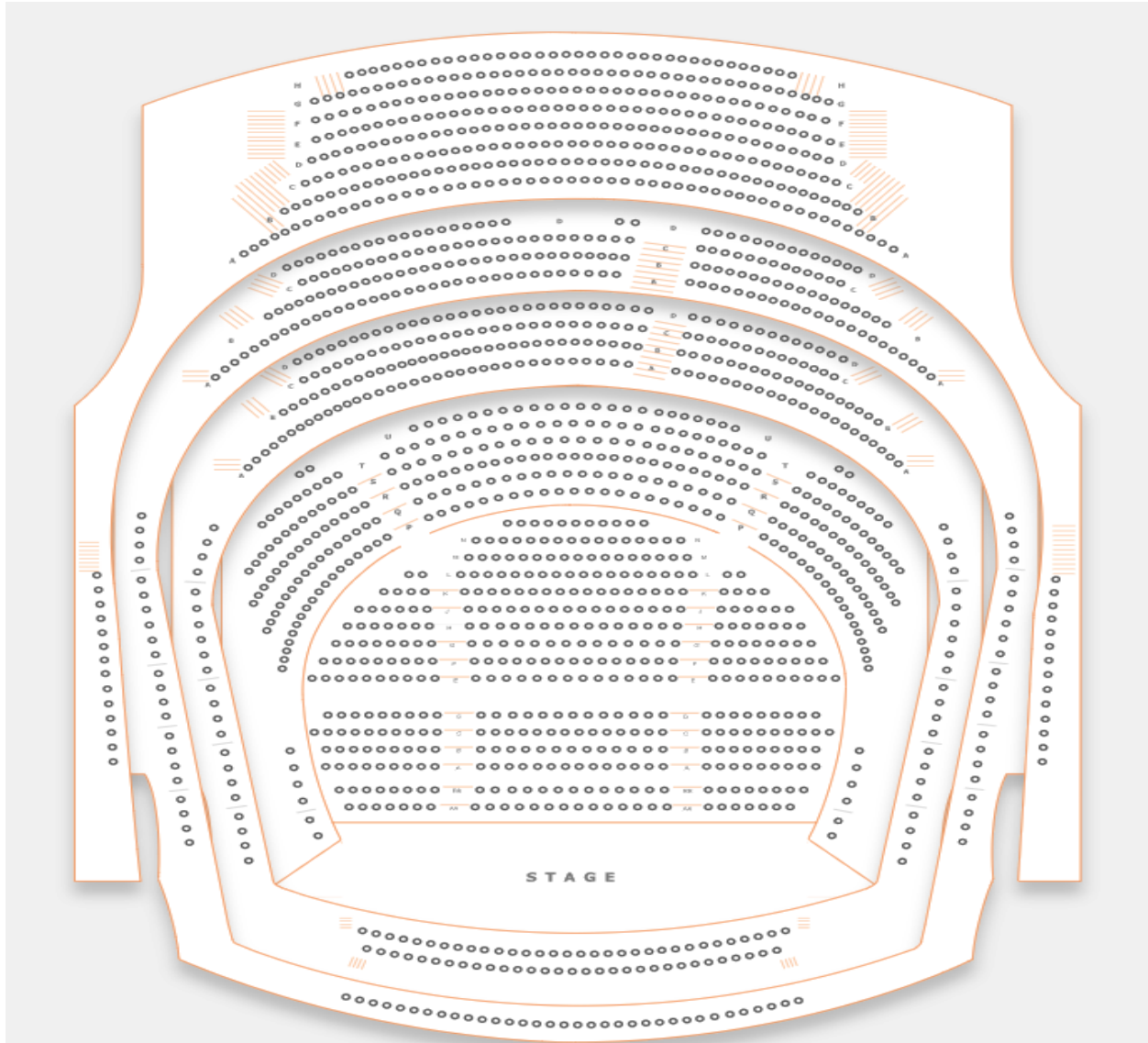
Concert Configuration



Above is a view of Steinmetz Hall in Concert Configuration with Large Extension. This picture is taken from the center of the Grand Tier.

Seating Overview

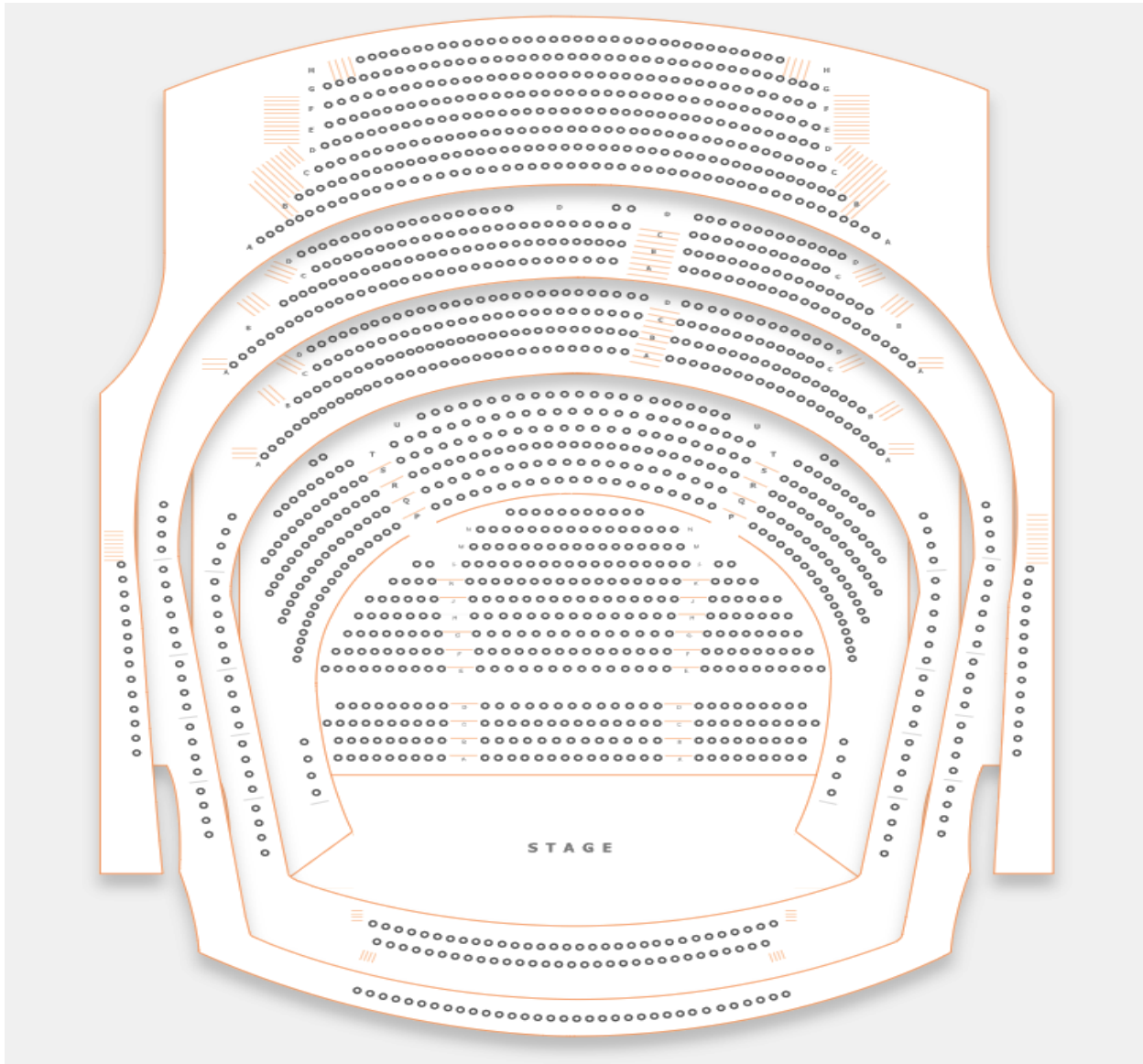
Concert Configuration with Small Extension



(Rows AAA, BBB, CCC are not available or shown)

Seating Overview

Concert Configuration with Large Extension

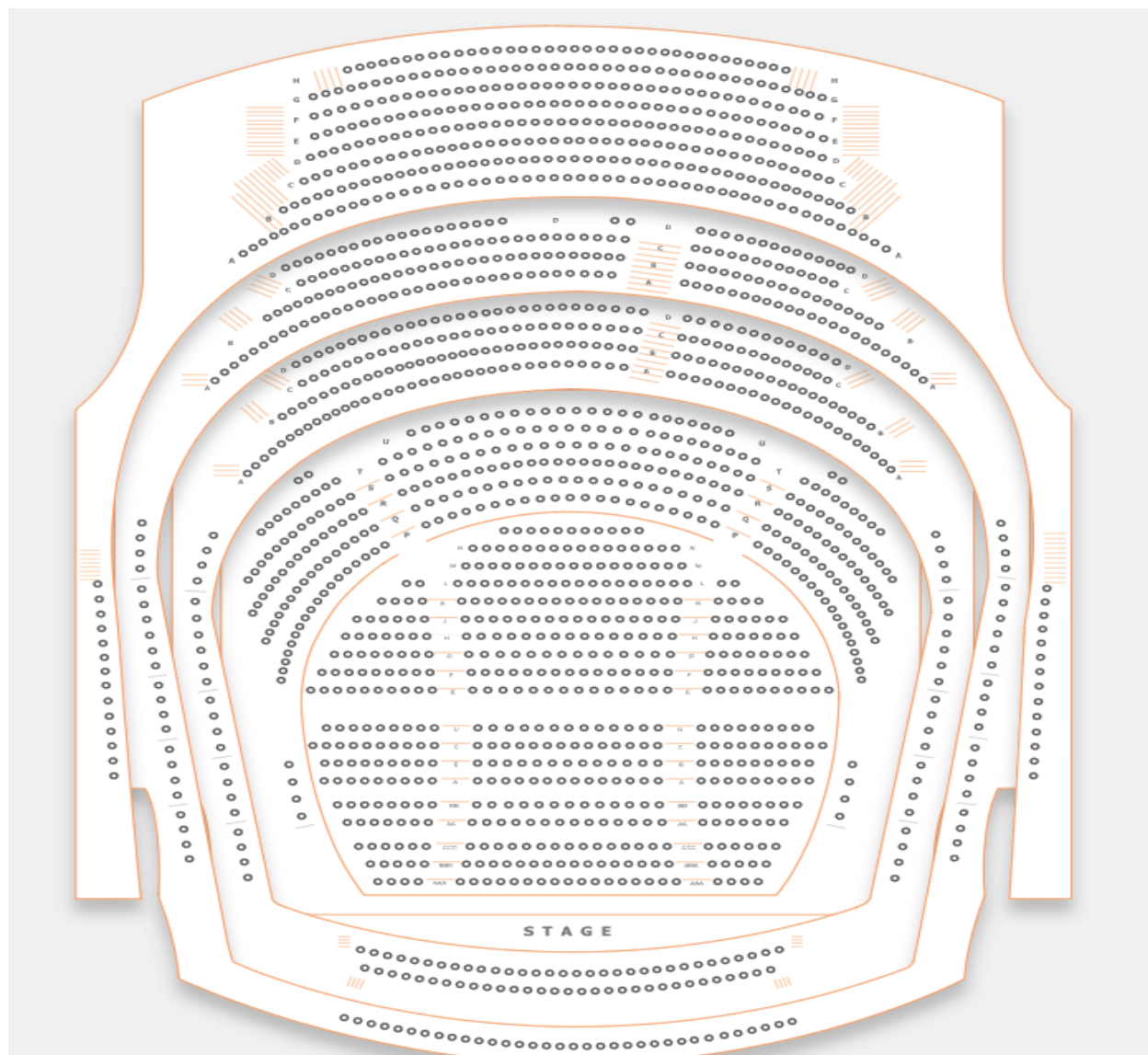


(Rows AAA, BBB, CCC, AA, and BB are not available or shown)

(Boxes 1 and 2 are not available)

Seating Overview

Concert Configuration with Full Seating



(All seats are available, maximum capacity)

Stage Specifications

STAGE FLOOR is a semi sprung floor with double layer tongue and groove plywood on aluminum sleeper over rubber blocks and finished with 1" tongue and groove oak. The rubber blocks are surrounded by a steel channel which limits over-decompression. Any damage to floor incurred by a production must be restored. No nails or screws may be drilled into the stage floor.

Stage Floor Configurations

HEIGHT OF GRID UNDERSIDE	110'
HEIGHT OF PROSCENIUM OPENING	44'
WIDTH OF PROSCENIUM OPENING	50'
HEIGHT OF GALLERIES	
Operating Pin Rail SR	Stage Level
Wing Clearance under SL and SR Galleries	36' 6"
Upper Operating Pin Rail SR	41'
Clearance under Upstage Catwalk (US of line set 100)	75'
Upper Loading Gallery	95'
DEPTH OF STAGE (from Plaster Line)	55'
WIDTH OF STAGE	148'
Width of stage (center to SR)	53'
Width of stage (center to SL)	55'
Width of stage left wing	40'
CENTER STAGE TO UPPER PIN RAIL SR	50'
CENTER STAGE TO UPPER PIN RAIL SL	48' 9"

Thrust Configurations

APRON (from Plaster Line)	5' 2"
(from House Curtain)	7' 2"
LARGE EXTENSION (from Plaster Line)	22' 1"
(from House Curtain)	25'
SMALL EXTENSION (from Plaster Line)	15' 1"
(from House Curtain)	22' 2"
HEIGHT OF STAGE (seating level to stage level)	3' 6"

Orchestra Pit

The Orchestra Pit can be configured into two sizes. In a full pit configuration, the pit consists of the first 5 rows – AAA, BBB, CCC, AA and BB. In a small pit configuration, the pit consists of only the first 3 rows – AAA, BBB, and CCC. The levels of risers can be individual adjusted. The pit CANNOT move with people in the pit.

A 40% open PVC – based scrim is available for both size configurations as a cover.

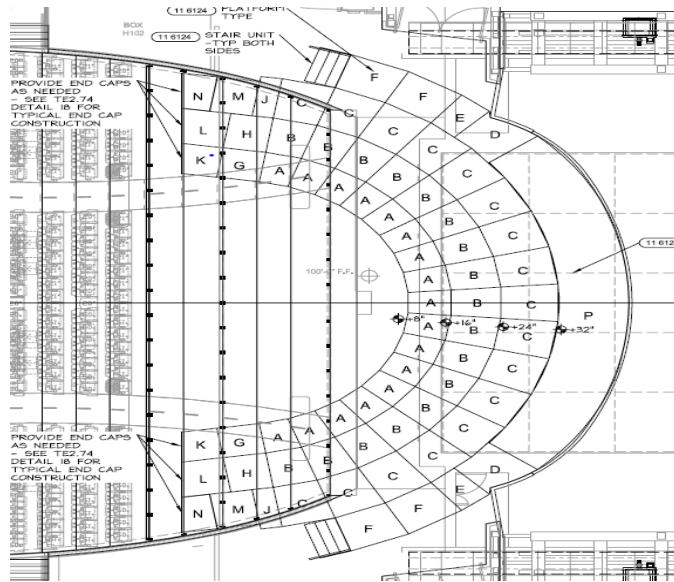
LARGE PIT Opening (Stage edge to DS pit wall)	16' d
Overall Dimensions including pit under-hang	24' x 52'
Approximate Capacity of Musicians	55 Musicians
SMALL PIT Opening (Stage edge to DS pit wall)	10' d
Overall Dimensions including pit under-hang	18' x 52'
Approximate Capacity of Musicians	30 Musicians
DEPTH OF PIT (seating level to stage level)	8' 6"

Orchestra Equipment (Ratstands)

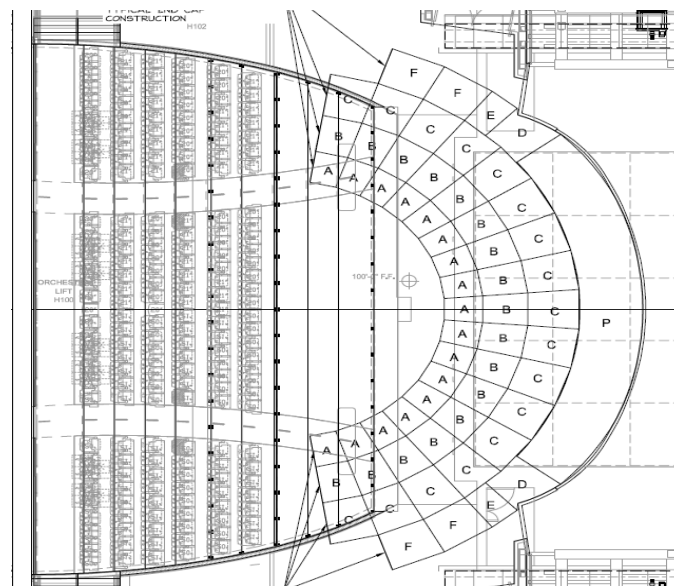
Musician Chairs	100
Bass Stools	10
Music Stands	110
Music Stand Lights (dimmable)	110
Conductor Podium	1
Conductor Stands	2
Conductor Chair	1

Orchestra Risers

Available risers are designed to fit in the arc of the cassette in Concert. The “P” riser is fixed at 32” in height. Standard legs of 8”, 16”, 24” and 32” exist for all other decks.

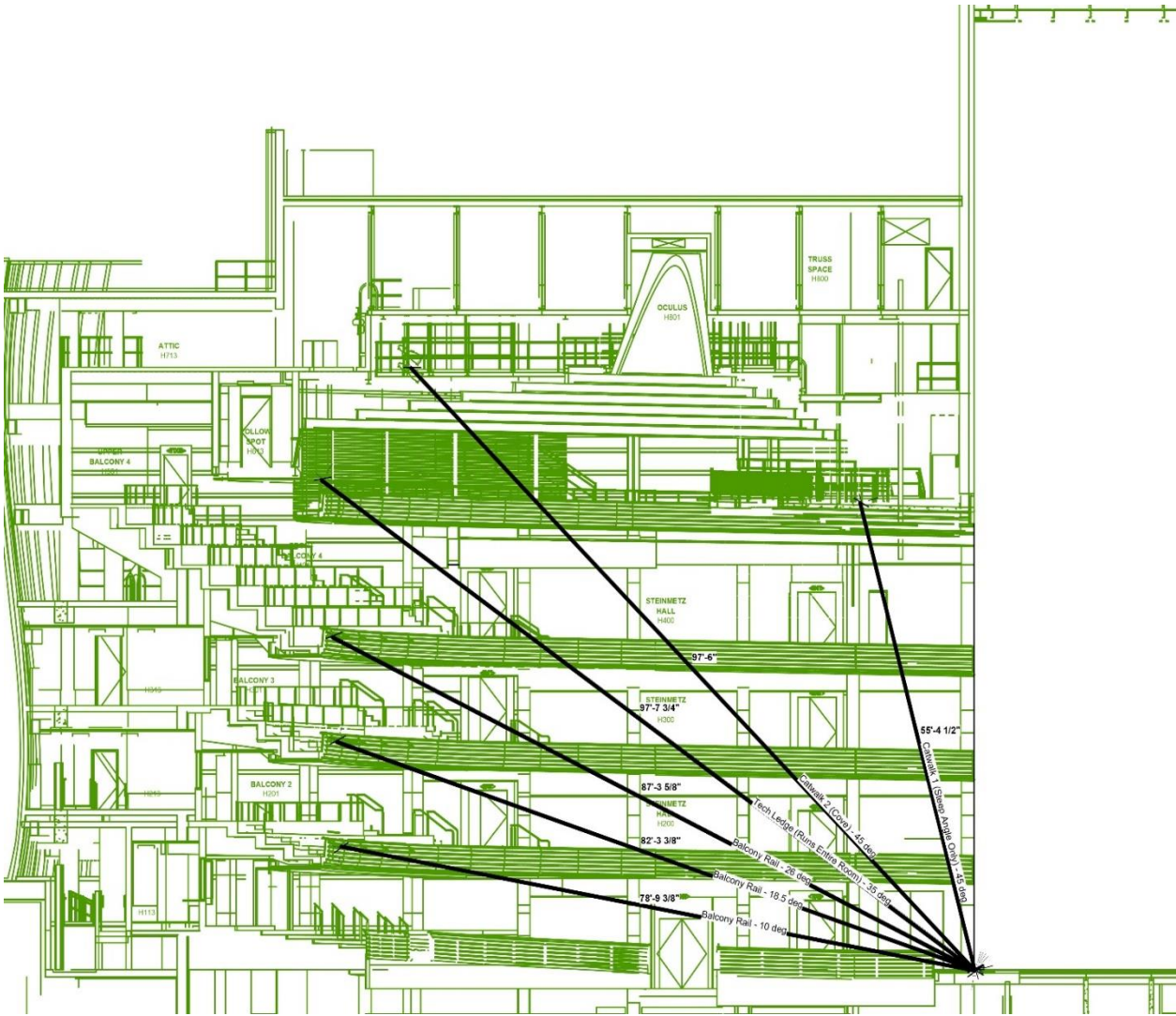


Risers for Large Extension



Risers for Small Extension

Steinmetz Hall: Center Line Section



Rigging Specifications

Steinmetz's counter-weight system is single purchase, under-hung, with (84) line sets currently installed and two operating positions; one position is located on stage level and the second located 36'6" above the Stage Right Deck.

The Grid is walkable on Gridiron Channel Deck; wells are located at 0'0", 10', 20', and 30' left and right of center.

Number of Available Line Sets: 83-line sets at 6" and 12" on center (see line set schedule)

Grid Height	110'
Pipe Travel	103'
Max Live Load Weight	# 2,000
Total Weight Available	# 35,000
Length of Battens	66' (extensions available)
1.25 Ton, 32 FPM Chain Motors	20
½ Ton, 32 FPM Chain Motors	8

Obstacles

- Line set #2 is the house curtain and is permanent as a guillotine. It cannot be removed or transferred to a different position.
- There are 1' gaps from downstage to upstage located every 9' beginning at 4'6"-5'6"
- There are line set positions marked as "Future" that are currently not installed (see line set schedule.)

Soft Goods Inventory

Description	Unit	Height	Width
House Curtain (100% Fullness)	1	45'	65'
Borders	8	12'	66'
Legs	8 (Pair)	34'	15'
Flat Panels (Blackout)	4	34'	30'
Traveler (100% Fullness)	2 (Pair)	34'	34'6"
Scrim (Blue Sharkstooth)	1	34'	66'
Scrim (Black Sharkstooth)	1	34'	66'
Plastic Cyc (White PVC)	1	38'	66'
Cyc (White Leno Filled)	1	38'	66'
Flat Panels	8	34'	14'
Side Tabs	4	34'	20'

Line Schedule

Non-permanent hangs are subject to change and verification during advance. All the dimensions below were taken from the plaster line, the downstage side of the portal. The portal is 12" deep.

Line #	Position	House Hang	Notes	Weight
1	2' 0"	Valance		
2	2' 6"	House Curtain	Permanent	
Unavailable				
4	3' 6"	Border #1		
5	4' 0"	Legs #1		
6	4' 6"			
1' - 0" Spreader Gap				
8	5' 6"			
9	6' 0"			
10	6' 6"			
11	7' 0"			
12	7' 6"			
13	8' 0"			
14	8' 6"			
15	9' 0"			
16	9' 6"	Border		
17	10' 0"	Legs		
18	10' 6"			
19	11' 0"			
20	11' 6"			
21	12' 0"			
22	12' 6"			
23	13' 0"			
24	13' 6"			
1' - 0" Spreader Gap				
26	14' 6"			
27	15' 0"			
28	15' 6"			
Unavailable				
30	16' 6"	Border		
31	17' 0"	Legs		
32	17' 6"			

Line #	Position	House Hang	Notes	Weight
33	18' 0"			
34	18' 6"			
Unavailable				
36	19' 6"			
37	20' 0"			
38	20' 6"			
Unavailable				
40	21' 6"			
41	22' 0"			
42	22' 6"			
1' - 0" Spreader Gap				
44	23' 6"	Border		
45	24' 0"			
46	24' 6"	Legs		
Unavailable				
48	25' 6"			
49	26' 0"			
50	26' 6"			
51	27' 0"			
52	27' 6"			
53	28' 0"	Mid Stage Black		
54	28' 6"			
55	29' 0"			
56	29' 6"			
57	30' 0"			
58	30' 6"			
59	31' 0"			
60	31' 6"	Border		
1' - 0" Spreader Gap				
62	32' 6"	Legs		
Unavailable				
64	33' 6"	Black Scrim		
65	34' 0"			
66	34' 6"			
67	35' 0"			
68	35' 6"	Cyc Electric		

Line #	Position	House Hang	Notes	Weight
69	36' 0"			
70	36' 6"			
Unavailable				
72	37' 6"			
73	38' 0"			
74	38' 6"	Border		
Unavailable				
76	39' 6"	Legs		
77	40' 0"			
78	40' 6"	Cyc		
1' - 0" Spreader Gap				
80	41' 6"	Rear Projection Screen		
81	42' 0"			
82	42' 6"	Flat Panel Blackout		
Unavailable				
84	43' 6"			
85	44' 0"			
86	44' 6"			
Unavailable				
88	45' 6"			
89	46' 0"			
90	46' 6"			
91	47' 0"			
Unavailable				
93	48' 0"			
94	48' 6"			
95	49' 0"			
96	49' 6"			
1' - 0" Spreader Gap				
98	50' 6"			
99	51' 0"			
100	51' 6"	Full Black		

Sound and Communications

When Steinmetz Hall is in Concert Configuration, with the Cassette in, the Hall is acoustically reflective and has achieved an N-1 Rating. Most performances in Concert configuration are recommended to perform without amplification, though a House system exists for curtain speeches and basic speech. If a production does choose to reinforce and amplify, monitor wedges are NOT recommended as the sound reflects off the Cassette and creates multiple issues in clarity and intelligibility."

Speaker Configuration

Steinmetz Hall has a D&B V-Series line array system, three flown arrays Left and Right. D&B E8 and E12 speakers provide fill for seating located in the towers, cassette, Grand, Center, and Upper Tiers. The D&B E8 front fills, service the first few rows of seating in the orchestra when NO extension is used and are housed in a continuous cavity along the front of the stage.

Main Arrays: The primary speaker system consists of three D&B V-Series line arrays. The Left and Right line arrays each have seven V12 Series and two V8 Series speakers each and flown downstage of the proscenium.

Sub Configuration: Sub-woofers are D&B SL-GSUB (four available). These can be located beneath the stage in the orchestra pit or on stage level in front of the proscenium arch.

Patching: All systems are available for individual discrete patching at mix positions as well as DSL and DSR patch points.

Audio Power: Audio Power is provided through a K -13 transformer delivering clean isolated power to all audio and video locations throughout the theater. The following locations are available company tie ins.

- 200 amp 3 phase company switch at DSL
- Four 20 amp receptables available DSR, DSL, USL, and USR

Sound Mix Positions

There are two mixing positions available. Please discuss all seat holds for mixing positions with Production or Event Staff prior to tickets going on sale.

- **SOUND BOOTH:** Located in the rear of the orchestra terrace approximately 95' from the downstage edge of the apron. This position is in an enclosed booth, under a balcony, that has a window that can open. It is approximately 18'w X 8'd, with a 30" counter against the window wall. The booth is located behind row U, with the window behind seats 113-116. A cable run from DSL or DSR through the basement and up into the booth is approximately 225'.
- **IN HOUSE SOUND MIX LOCATION:** Approximately 62' from the downstage edge of the apron to the back of the Orchestra level – replacing part of rows N & O (N108 -114 and O108-113). The floor is sunken but allows view over seated guests in row M ahead and view of patrons in row P over the consoles and operator. This is an exposed position, so console lighting, height of consoles, and activity is visible by patrons. The width of this position is 11'. This position is generally on Production Hold. Prior arrangement must be made with Production staff prior to ticket sale if position is desired. The cable run is approximately 175' down through the basement to DSL or DSR.

Front of House Console

X-SD12-96-W-WS-ST	DiGiCo SD 12-96 Control Surface – MADI & Multi-Mode Optics ST. Connections: MADI x 2, Optics x 1, Internal Waves Card Connectors: BNC, OpticalCon
X-WAVES-SD12	DiGiCo SD 12-96 SD -Waves Card (Internal SD Waves Card. Factory Fit)
X-WAVES-EX2	External Extreme DiGiCo Waves package
MGB-P	DiGiCo DiGi-Grid MGB 112/128 Ch @48kHz
SD Rack	2 DiGiCo SD Racks - MADI & Multi-Mode Optics ST. Connections: MADI x 2, Optics x 1 Connectors: BNC, OpticalCon Both have 56 inputs, 1 has 8 outputs, the other has 24 Analog and 16 AES Outputs
SD-Mini Rack	8 AES Inputs and 8 AES Outputs MADI & Multi-Mode Optics ST. Connections: MADI x 2, Optics x 1 Connectors: BNC, OpticalCon

Monitor Console / Stage Monitors / Side Fills / Amplifiers

One 56-Channel Analog Split with 3 available 56-Channel Fan Outs			
6	D&B M4	Monitors	15" Stage Monitor
4	D&B M6	Monitors	12" Stage Monitor
2	D&B V7P	Side Fills	2 x 10", 1 x 8 cone 3-way passive point source speaker
2	D&B V10P	Side Fills	2 x 8" 2-way passive point source speaker
2	D&B V Sub	Side Fills	Cardioid Sub, 18" front 12" rear
2	D&B D20	Amplifiers	4 Channel 1600 W 4 Ohm
1	D&B D80	Amplifiers	4 Channel 4000 W 4 Ohm

Recording / Playback / Effects

1	Denon	DN-500CB SD/USB Recorder
1	Tascam	DA-3000 SD Recorder
1	Apple	Mac Mini with Q-Lab Video
1	Sony	UBP-X 1000ES Blu-Ray
1	Atomos	Shogun Studio Dual Recorder

Video

3	Panasonic	AW-UE100 PTZ Camera (mounted on Gallery Tier Rail)
1	Panasonic	AV-UHS500-PJ Production Switcher
4	Blackmagic	Smart Video Hub 12G 40x40
1	Apple	iMac 27" with Q-Lab Video and Audio
2	Yamaha	HS-5 (Control Room Monitors)

Microphones

2	Earthworks	FM - 500 / HC
1	Earthworks	PianoBar Mic System
4	Crown	PCC - 160 Boundary Mic
1	Shure	Beta 52A Kick Drum Mic
9	Shure	SM 58
12	Shure	SM 57
6	Shure	Beta 56 A Drum Mic
8	Shure	MX184 Lav Mic
8	Shure	Mx185 Lav Mic
1	Shure	VP88 Stereo Mic
6	Sennheiser	MD421
2	ElectroVoice	RE20
2	Mitek	MIK - C7e Large Diaphragm Condenser
1	Mitek	MIK - 201 2 - ch Mic Preamp
4	DPA	4006A Omnidirectional Small Diaphragm Condenser
4	DPA	4011A Cardioid Small Diaphragm Condenser
3	DPA	4099 Instrument Mic with Universal Clip
12	DPA	4088 Directional Headset Mic
17	DPA	4061 Lavalier Microphones

Wireless Mic System

4	Shure	AD4Q Axient Digital 4 Channel Mic Receivers
1	Shure	ATX630 Axient Antenna Distribution System
16	Shure	ADX1 = G57 WLX Mic Transmitter
8	Shure	ADX2 / K8: G57 Handheld Transmitter, KSM 8 Capsule
4	Shure	SM86 Wireless Capsule
8	Shure	Beta 58A Wireless Capsule
4	Shure	Beta 87A Wireless Capsule

Direct Boxes / Interface

1	Radial	JDV Active DI Box
4	Radial	JDI Duplex DI Box
4	Radial	JDI Passive DI Box
1	Radial	ProAV 2 Multi-media DI Box
1	Motu	8D Interface

Backstage Communications

1	Clear Com	HelixNet Digital Intercom System
1	Clear Com	Freespeak II Wireless Intercom System
16	Clear Com	HelixNet Belt Pack
1	Clear Com	LQ - R - 2W4 - 4W4 Interface (portable)
8	Clear Com	Freespeak II Belt Pack
12	Clear Com	CC - 110 Single - Muff Headset
8	Clear Com	CC - 400 Double - Muff Headset

Lighting Information

Control

The lighting control booth is at the back of the Grand Tier, on the 2 nd floor	
1	ETC Eos Ti 24k Console
1	ETC GIO @5
653	ETC Sensor Dimmers

Power Distribution

Stage	
1	200A DSL Camlock Connection with Isolated Ground
2	400A DSL Camlock Connection
1	200A USR Camlock Connection

Pin Rail	
3	400A Lower SL Pin Rail Camlock Connection
1	100A Pin and Sleeve 3 Phase SL Upper Pin Rail
1	100A Pin and Sleeve 3 Phase SR Upper Operator Bridge

Grid	
1	100A Pin and Sleeve 3 Phase USL Grid
1	100A Pin and Sleeve 3 Phase USR Grid
1	100A Pin and Sleeve 3 Phase SL Forestage Grid
1	100A Pin and Sleeve 3 Phase SR Forestage Grid

Basement	
2	400A Lower SL Pin Rail Camlock Connection
1	100A Pin and Sleeve Arbor Pit
1	200A Trap Room Camlock Connection

Video Booth	
4	L6 - 30

Lighting Equipment

Followspots

3	Lycian 1295 3K Follow spots located in spot booth 100' from stage at a 32 degree angle
---	--

Conventional

14	19° 750w Source Four Ellipsoidal Spots
35	26° 750w Source Four Ellipsoidal Spots
50	36° 750w Source Four Ellipsoidal Spots
25	750w ETC Source Four Par with lens options, VN, N, M, W

LED

8	ChromaQ Colorforce II 72 LED Strip Lights
24	ETC Desire Fresnel
5	19° Lustr 3 w/XDLT Lens
12	26° Lustr 3 w/XDLT Lens
18	36° Lustr 3 w/XDLT Lens
20	ColorSource Cyc Units
10	SolaFrame Theater Fixtures

Cable, adaptors, side arms, etc. are available for the above instruments. Please note that the SolarFrame Theater fixtures above may be utilized in their current rep plot positions, but they are not able to be moved to other positions.

In addition to the above fixtures, we have the following fixtures in the building inventory that are moveable around the plot, available at an extra cost, and are subject to availability.

14	HES SolaFrame Theater
24	HES SolaPix 19"

Dimensional Information

Downstage Edge to Tier 1 Rail	83' - 5" at 6° angle
Downstage Edge to Tier 2 Rail	85'-6" at 14° angle
Downstage Edge to Tier 3 Rail	89'-2" at 22° angle
Downstage Edge to Tier 4 Rail	96' at 30° angle
Downstage Edge to Tech Level Rail	98'-4" at 41°
Downstage Edge to Spot Booth	103' at 32° angle
Curtain Line to Lighting Booth	112'

Lighting Equipment

Hanging Restrictions

- Balcony rails cannot support moving fixtures or projectors. Rails may only be used for traditional mounting with a clamp attached to the factory provided yoke. No accessories to cantilever fixtures away from the pipe.
- Unistrut positions in the space can support 20lbs a foot. It cannot accommodate any moving fixtures or cameras.

Fixture Restrictions

- If your show is to be unamplified in the concert room configuration, we have a restriction on lighting instruments that can be utilized in the room. Please reach out to the production lighting supervisor for a up to date list of approved lighting fixtures.
- Moveable room elements do not contain dimmable circuits. Fixtures should be DMX controlled on relay or constant power.

Boom Box Information

- The Box Boom lighting positions are shown on the following plan and the center-line drawing is on page # 24 .
- Please keep in mind due to the location and fall protection needed, modifying this structure can take 3-5 hands an hour for each location. If these locations are to be utilized, labor will need to reflect this.

Front of House

- Steinmetz Hall has a complete front of house system that includes complete front and high-side lighting systems. Refer to the plot to see types and locations. If the FOH fixtures are to be moved or utilized elsewhere, the rig must be restored on the loadout.

Dressing Room / Wardrobe /Green Room Information

Dressing Rooms

Dressing rooms are located at level 2, stage level, and basement level. All rooms are equipped with showers, toilets, mirrors, and chairs. Each dressing Room is also equipped with the capability for hard-wired internet.

Dressing Room	Number of People	Dimensions
Level 2		
Room 2A	10-12 persons	18'W x 14'L
Room 2B	2-4 persons	10'W x 11'L
Room 2C	10-12 persons	18'W x 14'L
Room 2D	2-4 persons	14'W x 10'L
Stage Level		
Room A	2-4 persons	10'W x 11'L
Room B	2-4 persons	10'W x 11'L
Room C	2-4 persons	10'W x 11'L
Room D	Visiting Production Office	9'W x 22'L
Basement Level		
Room Chorus 1	18-20 persons	12'W x 36'L
Room Chorus 2	18-20 persons	12'W x 36'L
Room Musicians 1	12 persons	16'W x 19'L
Room Musicians 2	12 persons	16'W x 23'L

Wardrobe Room

There is a dedicated Wardrobe room located on level 2.

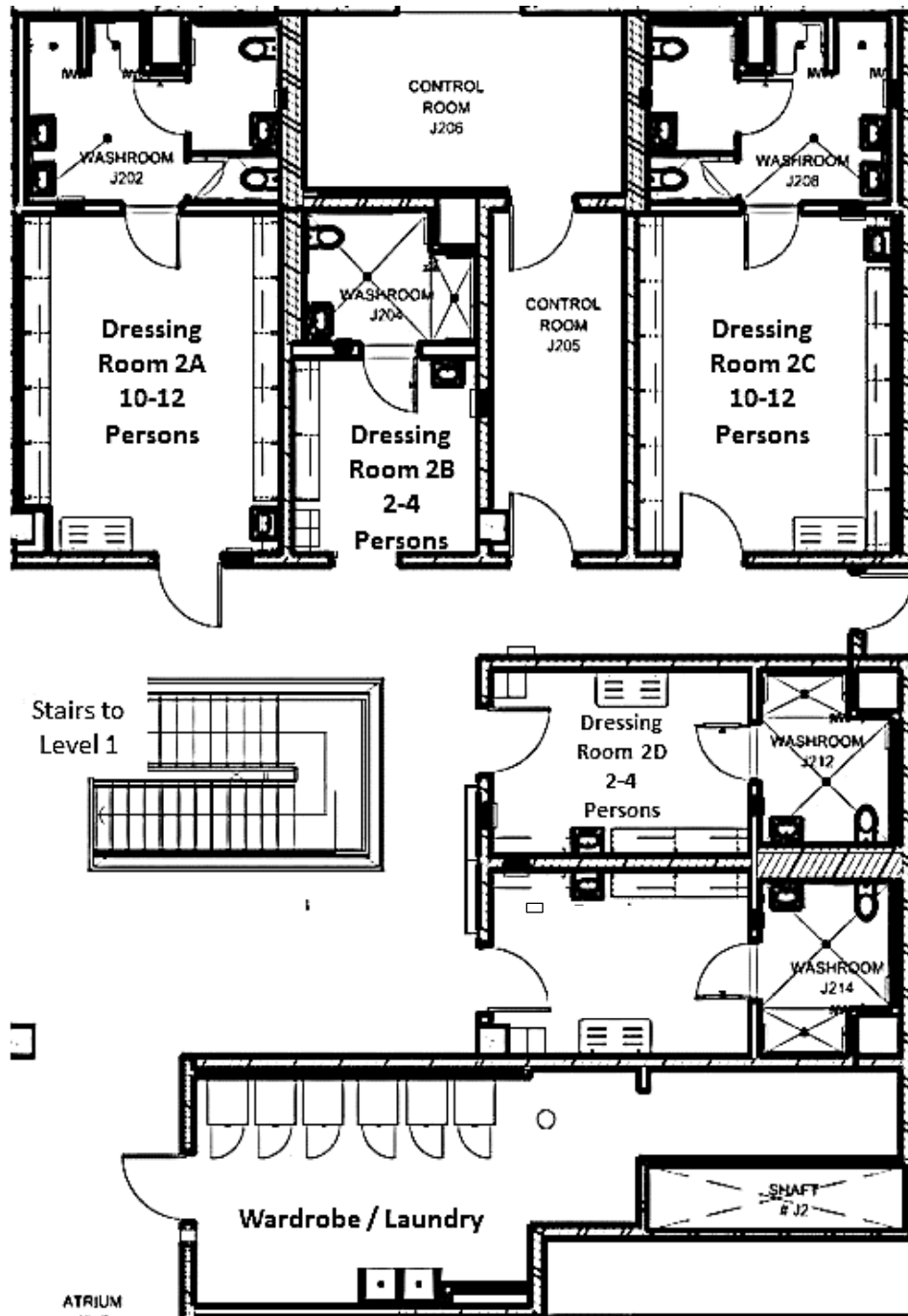
Laundry Room

The laundry room is located on level 2. Three washers and three dryers are on hand. A double sink is also available.

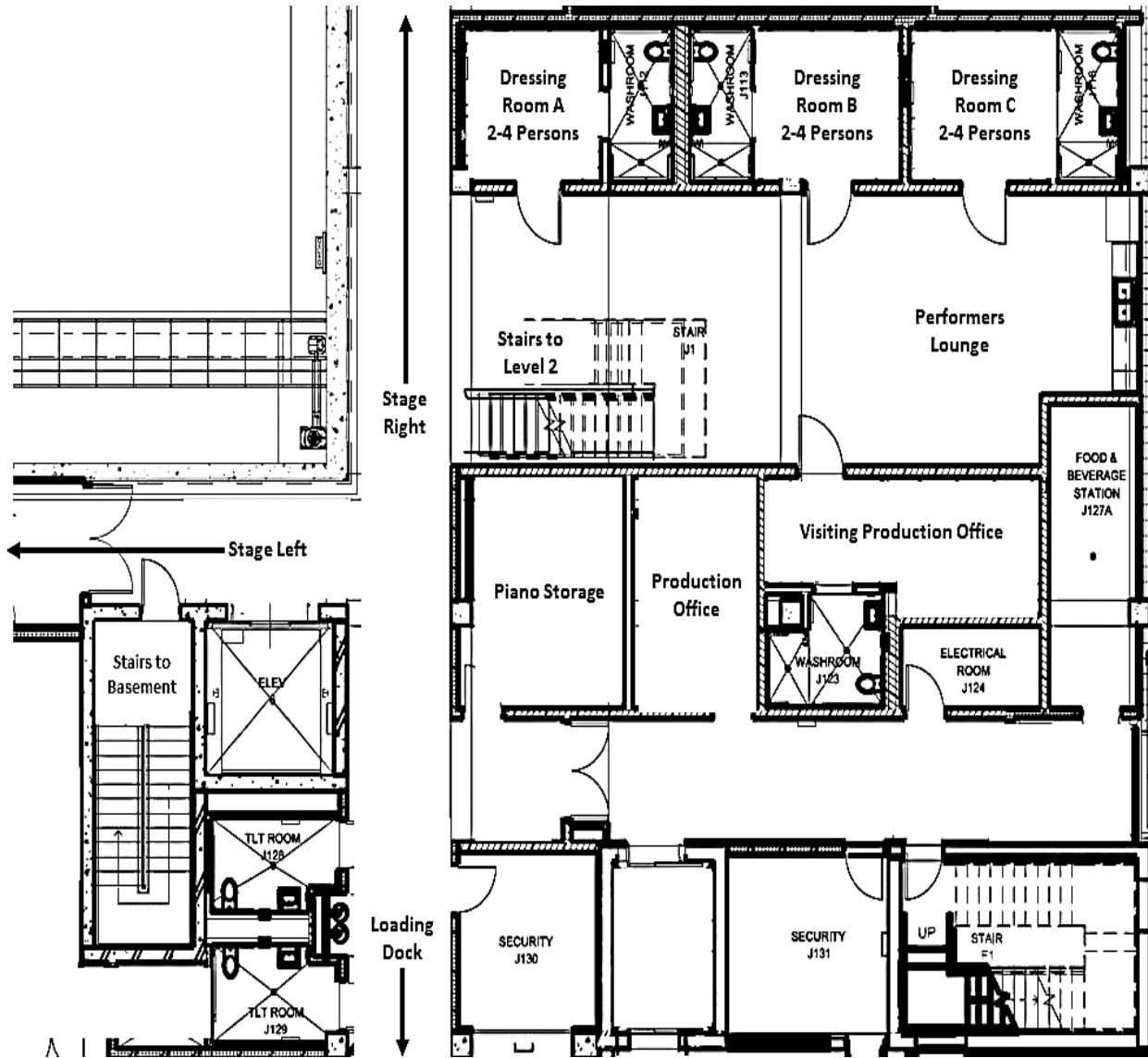
Green Room / Performer's Lounge / Catering Room

The Steinmetz Hall Green room is located on stage level and measures 17'W x 15'L. It holds a small kitchen area with a microwave, coffee maker, sink, and refrigerator. The stage level dressing rooms are located off the green room.

Backstage Map - Level 2



Backstage Map - Level 1 / Stage Level



Backstage Map - Basement Level

