

# TECHNICAL SPECIFICATIONS



dr. phillips center

FOR THE PERFORMING ARTS

## WALT DISNEY THEATER

Dr. Phillips Center for the Performing Arts

155 East Anderson Street.

Orlando, FL 32801

Main Office (407) 839 0119 (M-F 8:30A-5:30P)

Box Office (844) 513-2014

## Table of Contents

<u>GENERAL CONTACT INFORMATION</u>	<u>3</u>
<u>MAP &amp; DIRECTIONS</u>	<u>4</u>
<u>TRUCK, BUS &amp; VEHICLE PARKING</u>	<u>5</u>
<u>LOADING DOCK INFO</u>	<u>6</u>
<u>BUILDING PLAN ORCHESTRA LEVEL</u>	<u>7</u>
<u>BUILDING PLAN MEZZANINE LEVEL</u>	<u>8</u>
<u>SEATING INFORMATION</u>	<u>9</u>
<u>SEATING CHARTS</u>	<u>10</u>
<u>STAGE SPECIFICATIONS</u>	<u>13</u>
<u>ORCHESTRA PIT / STAGE THRUST INFORMATION</u>	<u>14</u>
<u>CENTERLINE SECTION DRAWING</u>	<u>15</u>
<u>RIGGING SPECIFICATIONS / OBSTACLES</u>	<u>16</u>
<u>HANGING PLOT / LINE SCHEDULE</u>	<u>17</u>
<u>OVER HOUSE RIGGING ACCESS</u>	<u>20</u>
<u>SOUND AND COMMUNICATIONS</u>	<u>21</u>
<u>LIGHTING INFORMATION/EQUIPMENT</u>	<u>25</u>
<u>GREENROOM/WARDROBE INFORMATION</u>	<u>27</u>
<u>BACKSTAGE MAPS</u>	<u>28</u>

## Contacts at the Dr. Phillips Center for Performing Arts

### PRODUCTION STAFF

Production Team	<a href="mailto:productionmanagement@drphillipscenter.org">productionmanagement@drphillipscenter.org</a>
-----------------	--

### STAGE LABOR - I.A.T.S.E. Local 631

The Dr. Phillips Center for the Performing Arts employs members of I.A.T.S.E. Local 631 for all productions in Walt Disney Theater, except Hair and Make-Up, which is Local 798. For further information, please contact Production Management for labor rates and work rules.

Head Carpenter	<a href="mailto:wdt.carp@drphillipscenter.org">wdt.carp@drphillipscenter.org</a>
Head Electrician	<a href="mailto:wdt.lighting@drphillipscenter.org">wdt.lighting@drphillipscenter.org</a>
Head Audio	<a href="mailto:wdt.audio@drphillipscenter.org">wdt.audio@drphillipscenter.org</a>
Head Properties	<a href="mailto:wdt.props@drphillipscenter.org">wdt.props@drphillipscenter.org</a>
Head Flyman	<a href="mailto:wdt.rigging@drphillipscenter.org">wdt.rigging@drphillipscenter.org</a>
Head Wardrobe	<a href="mailto:sh.wardrobe@drphillipscenter.org">sh.wardrobe@drphillipscenter.org</a>
BA Local #631	<a href="mailto:ba@iatselocal631.com">ba@iatselocal631.com</a>

### ADDITIONAL CONTACTS INFORMATION

Guest Services Team	<a href="mailto:fohadvance@drphillipscenter.org">fohadvance@drphillipscenter.org</a>
Food and Beverage Team	<a href="mailto:foodbeveragemanagement@dpc.org">foodbeveragemanagement@dpc.org</a>
Security Team	<a href="mailto:security@drphillipscenter.org">security@drphillipscenter.org</a>

### PRODUCTION OFFICE TELEPHONE NUMBERS

The Walt Disney Theater is equipped with an office space for touring acts. There are two total phone lines available for use and can be patched as needed in the office.

Production Phone #1	VM 0000	407.992.1799
Production Phone #2	VM 0422	407.992.1798

## Map and Directions

The Dr. Phillips Center is conveniently located in Downtown Orlando and can be reached by several routes.

### Address:

155 East Anderson Street  
Orlando, FL 32801

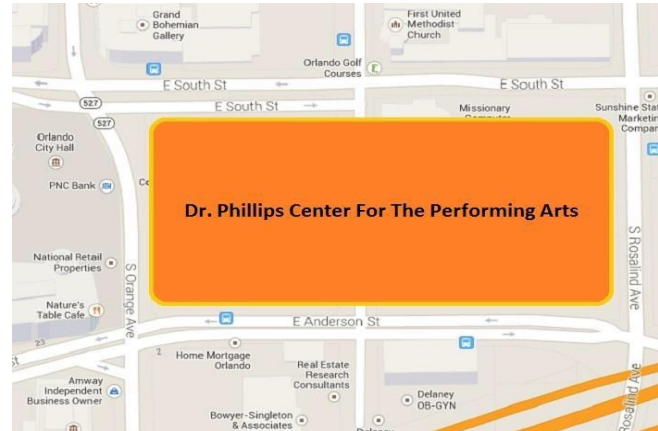
### **Driving Directions from I-4:**

#### Coming From the West on I-4:

- Take I-4 East to South Street (Exit 82B)
- (Exit curves right)
- Right onto South Street
- Right onto Orange Avenue

#### Coming From the East on I-4:

- Take I-4 West
- Exit #82C Anderson Street
- Left on Anderson Street
- Left onto S. Rosalind Avenue



### **Driving Directions from 408 (East-West Expressway):**

#### Coming Eastbound on 408 (East-West Expressway):

- 408 East to I-4 East - toward Daytona Beach (Exit 10A)
- Take the Anderson Street exit (Exit 82C)

#### Coming From the West on 408 (East-West Expressway):

- 408 West to the Rosalind Avenue exit (Exit 11A)
- Turn Left onto South Street

### **Trucks going to Loading Dock:**

From S. Orange Avenue turn Left into E. Anderson Street and then turn second left onto S. Rosalind Avenue. The gate entrance to back-stage lot is on your left. Push the buzzer to contact guard. Identify yourself and a guard will let you enter.

### **General Parking Instructions:**

*(If traveling South on S. Orange Ave., Turn Right onto South Street then follow the directions below)*

- Turn Left onto Boone Avenue
- Turn Right into the City Commons Parking garage (across the street from City Hall). This garage charges a fee.

*(If traveling East on South Street, Turn Right into the City Commons Parking Garage just before the South Street / Boone Ave. Intersection)*

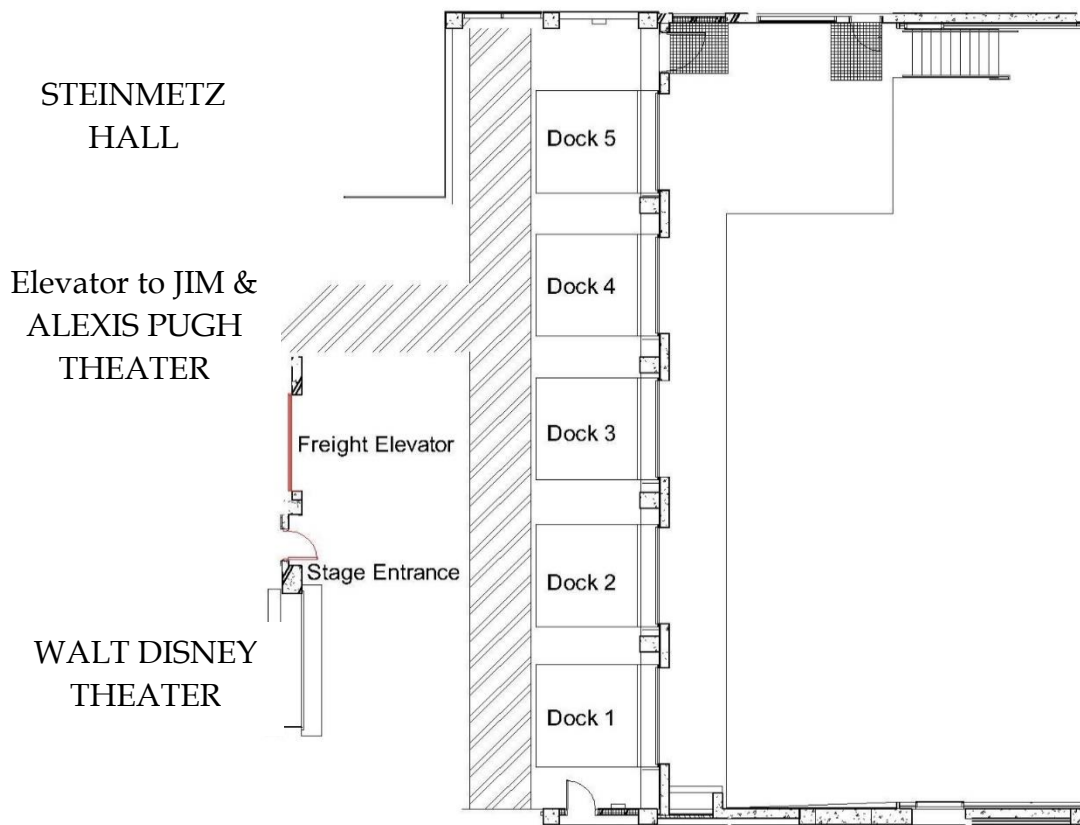
## **Truck, Bus, and Vehicle Parking**

Truck and Bus parking on site is limited. Please inquire with DPC Production Manager prior to arrival. There is only parking available directly backstage for 2 production vehicles, however, parking is available for other cars in the parking garages located across the streets from the theatre. All parking arrangements must be discussed with a Production Manager prior to the event for necessary passes and badges.

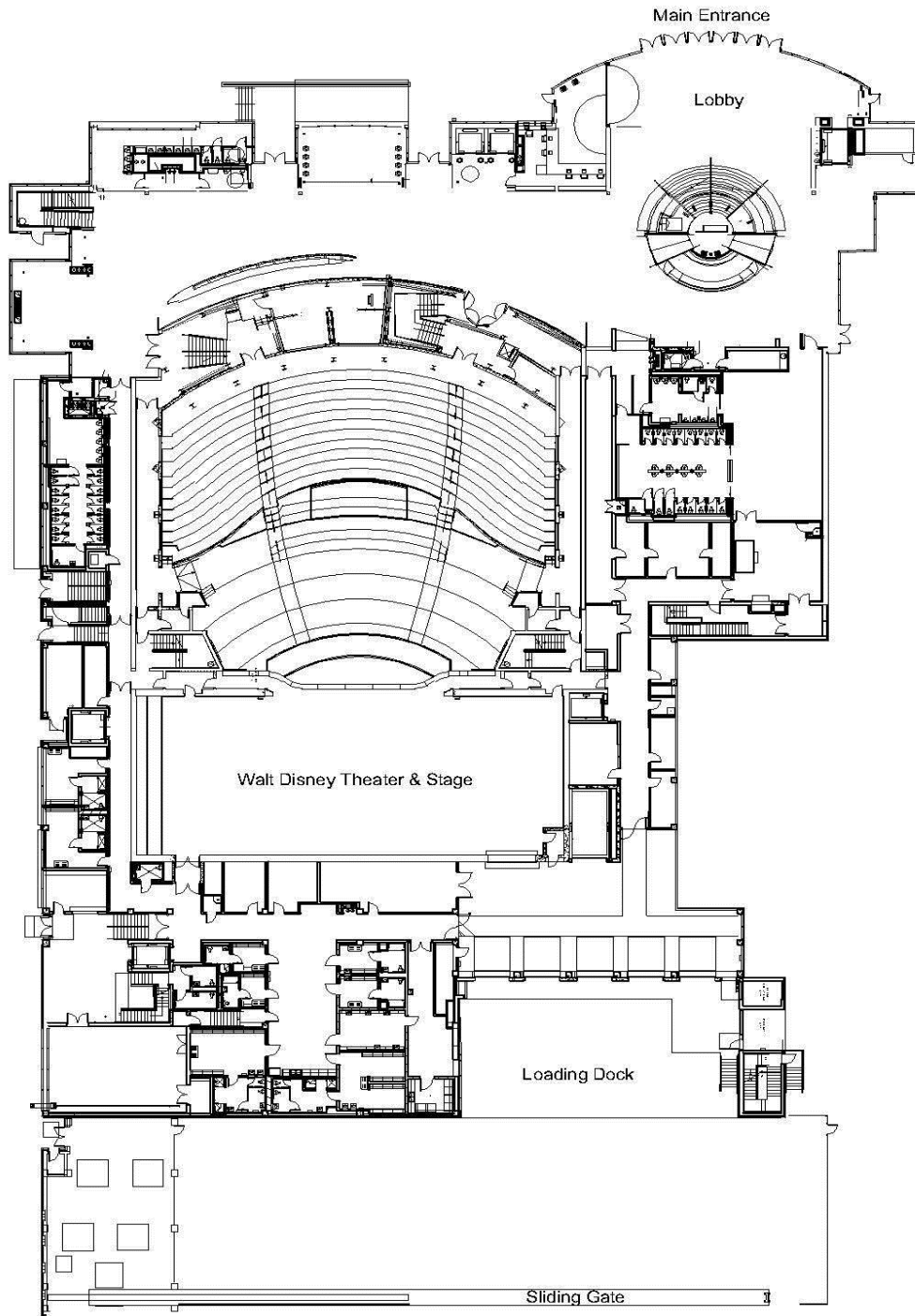


## Loading Docks

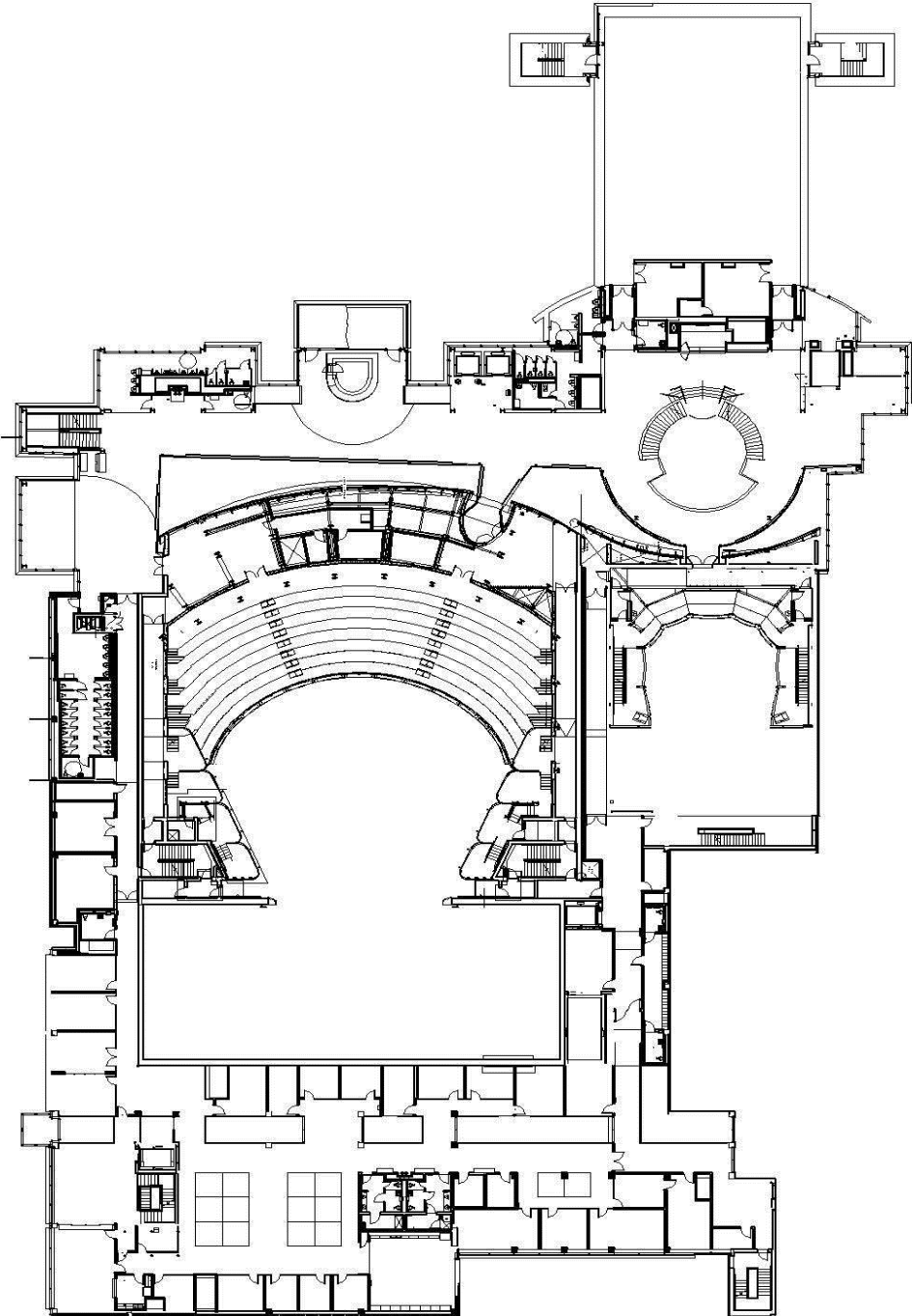
The loading docks are located in the rear of the building off South Rosalind Ave. There are five loading bays. The Loading Docks are 4' high and all have deck levelers. The doors are 8'w x 12'h with 2,668 square feet of receiving area. Doors from receiving area to the stage are 13' W x 16'H. A 50a shore power connection is available at Bay 1 and Bay 5. Only 2 bays may be occupied after load-in, with confirmation during the Advance Call.



# Building Plan Orchestra Level 1



**Building Plan Mezzanine Level 2**





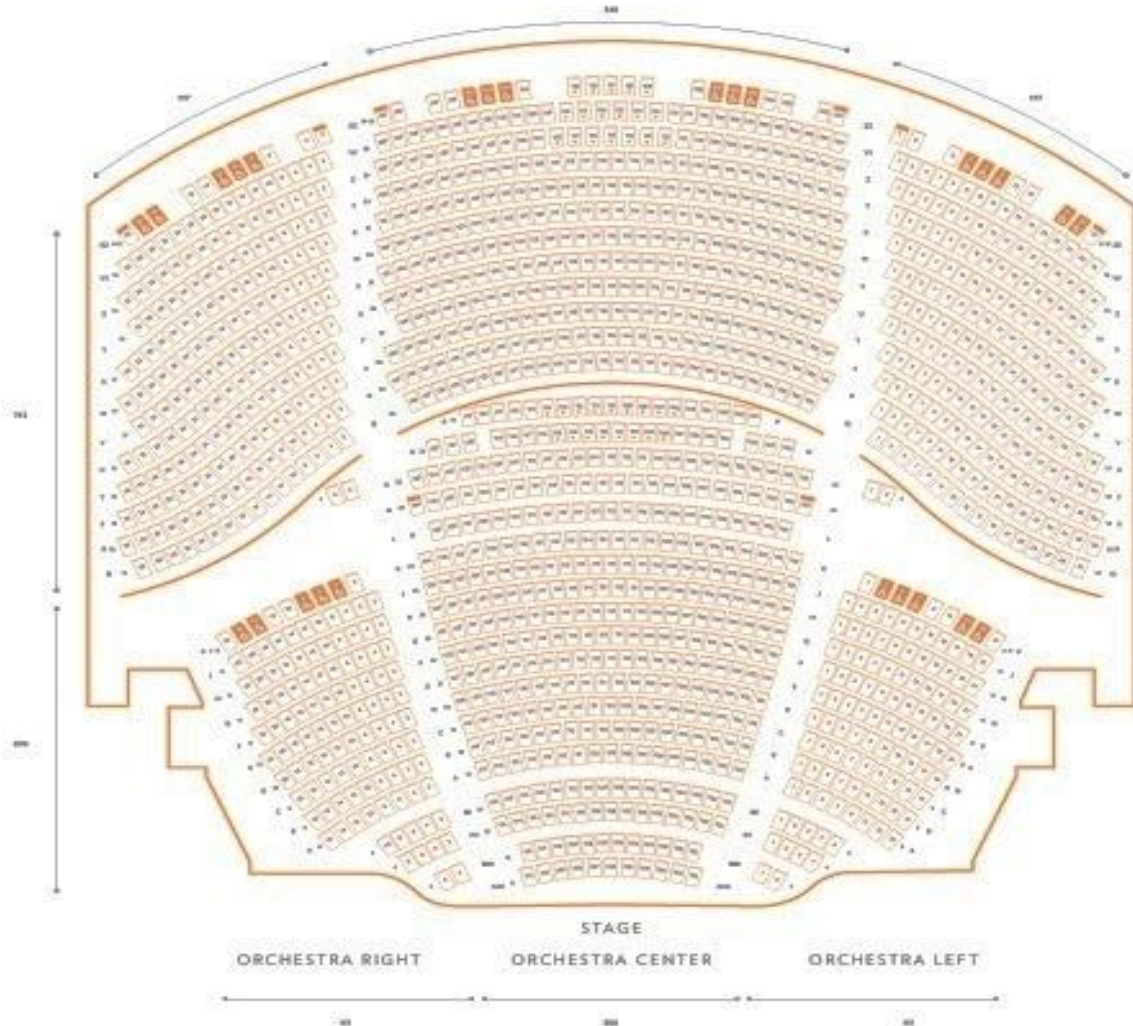
## Seating Information and Capacity

(MAXIMUM Seating Capacity is 2734 Seats (See seating map on following pages))

<b>Orchestra Level - 1400 Seats Total</b>		
Orchestra Level Pit 1	Rows AAA - BBB	27 Seats
Orchestra Level Pit 2	Rows AA - BB	49 Seats
Orchestra	Rows A - P	532 Seats
Orchestra Terrace	Rows Q - ZZ	743 Seats
Total Complete Orchestra	AA- ZZ	1324 Seats
Half Pit Configuration	Removable Rows AAA - BBB	27 Seats
Full Pit/ Full Thrust Configuration	Removable Rows AAA - BB	76 Seats
<b>Mezzanine Level - 580 Seats Total</b>		
Mezzanine Level	Row A - J	560 Seats
Mezzanine Box Seats	Boxes A, B, C	20 Seats
<b>Balcony Level - 803 Seats Total</b>		
Balcony Level	Rows A - M	775 Seats
Balcony Box Seats	Seats Box A, B, C, D	28 Seats



# Seating Charts - Orchestra

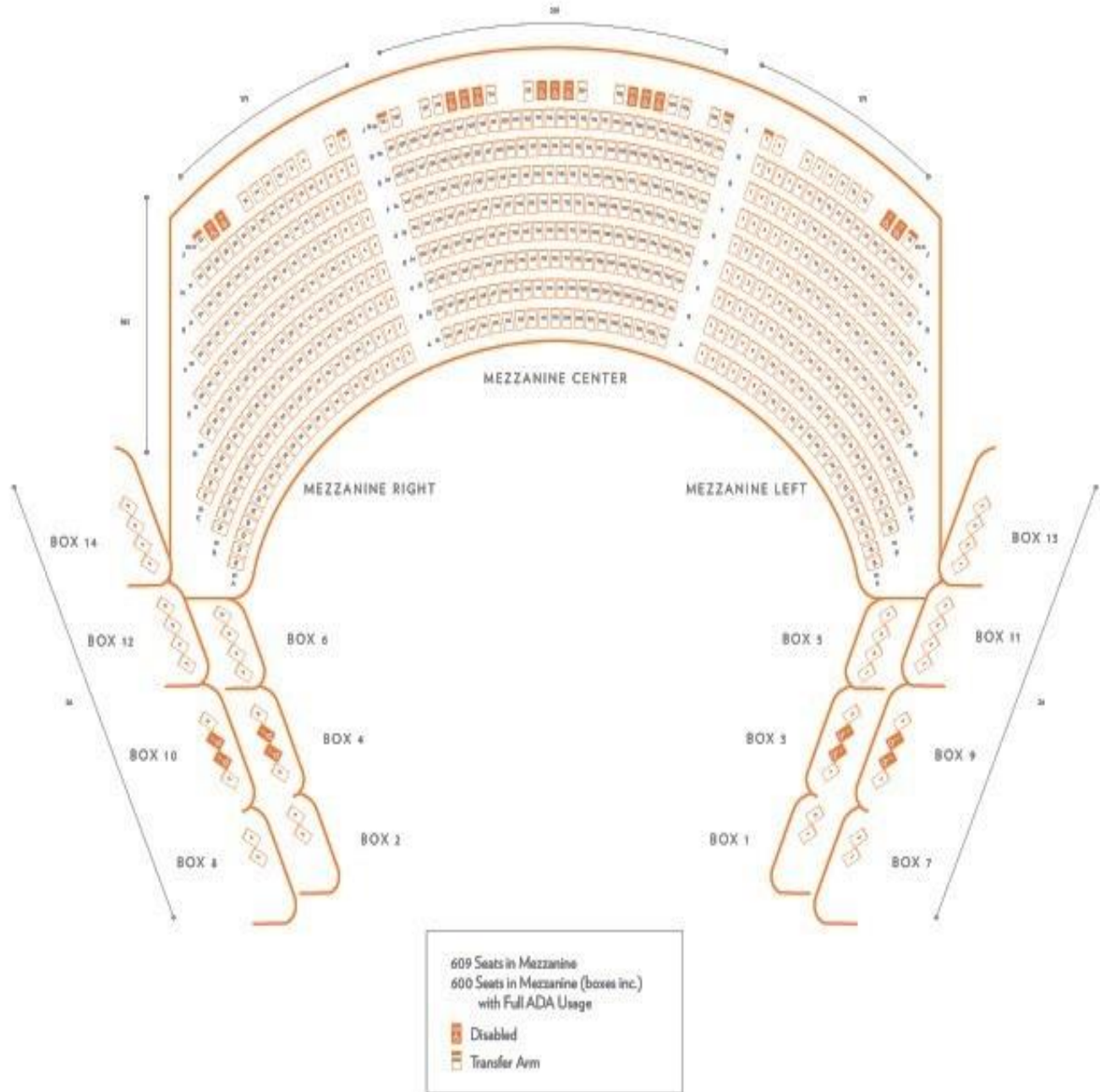


1348 Seats in Orchestra  
1338 Seats in Orchestra  
with Full ADA Usage

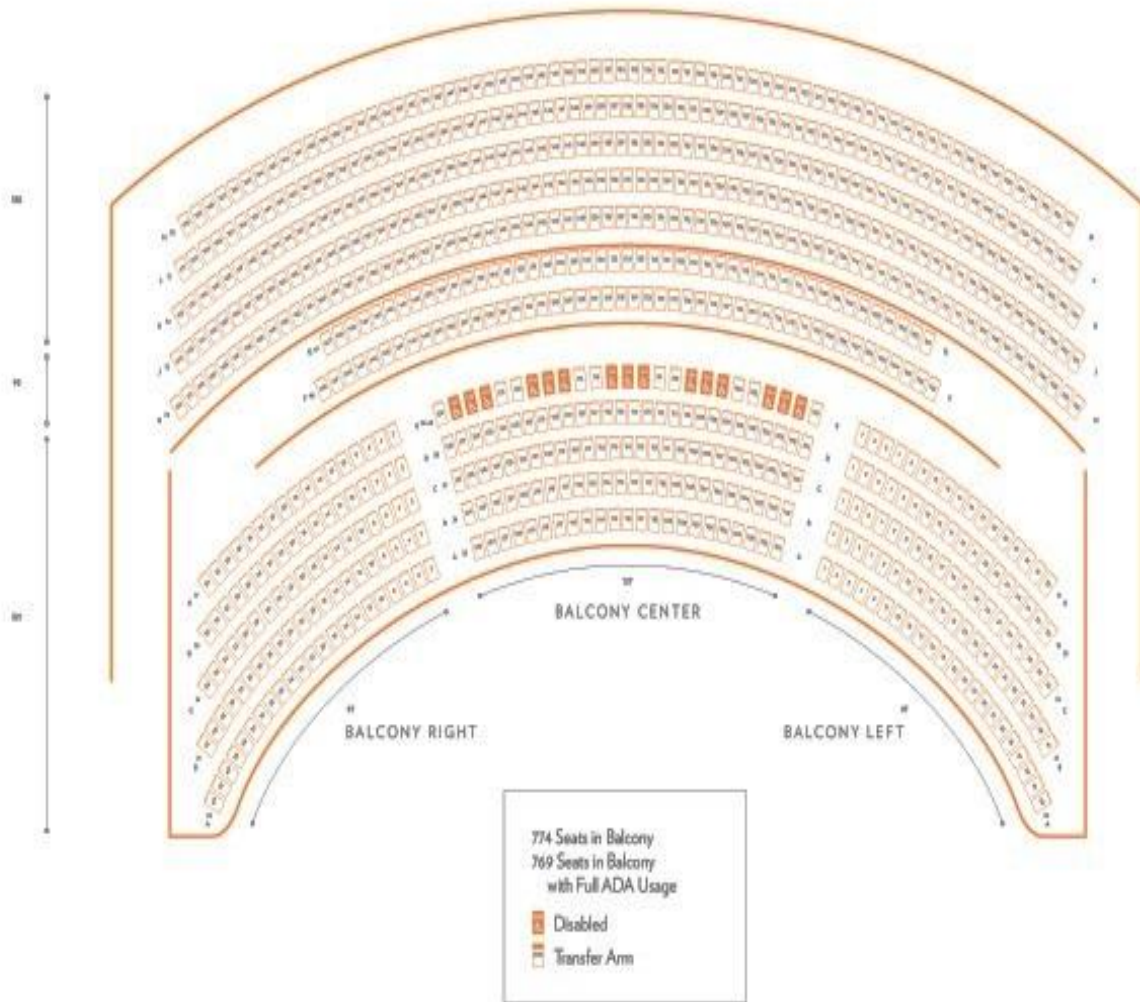
- Disabled
- Transfer Arm
- Removable for Broadway Mixer

Full Theater Capacity:  
2731 Seats  
2708 Seats with Full ADA Usage

## Seating Charts - Mezzanine



## Seating Charts - Balcony



## Stage Specifications

The Stage Floor is a semi sprung floor with double layer tongue and groove plywood on aluminum sleeper over rubber blocks and finished with black masonite. The rubber blocks are surrounded by a steel channel which limits over-decompression. Any damage to floor incurred by a production must be restored. Both thrust configurations are curved; measurements given are along the centerline.

### Stage Floor Configurations

<b>HEIGHT OF GRID UNDERSIDE</b>	81'
<b>HEIGHT OF PROSCENIUM OPENING</b>	32'
<b>WIDTH OF PROSCENIUM OPENING</b>	50'
<b>HEIGHT OF GALLERIES</b>	
Upper Loading Gallery	71' 7"
Pin Rail SR	41' (Catwalk is 36')
Operating Gallery/ Pin Rail SL	41' (Catwalk is 36')
Clearance to Underside of catwalks	36' 6"
Upstage catwalk	None
<b>DEPTH OF STAGE (from Plaster Line)</b>	50'
<b>WIDTH OF STAGE</b>	125'
Width of stage (center to SR)	59' 6"
Width of stage (center to SL)	65' 6"
<b>CENTER STAGE TO UPPER PIN RAIL SR</b>	46' 6"
<b>CENTER STAGE TO UPPER PIN RAIL SL</b>	52' 6"
<b>SIDE MASKING TABS UP TO DOWN</b>	48' off CL

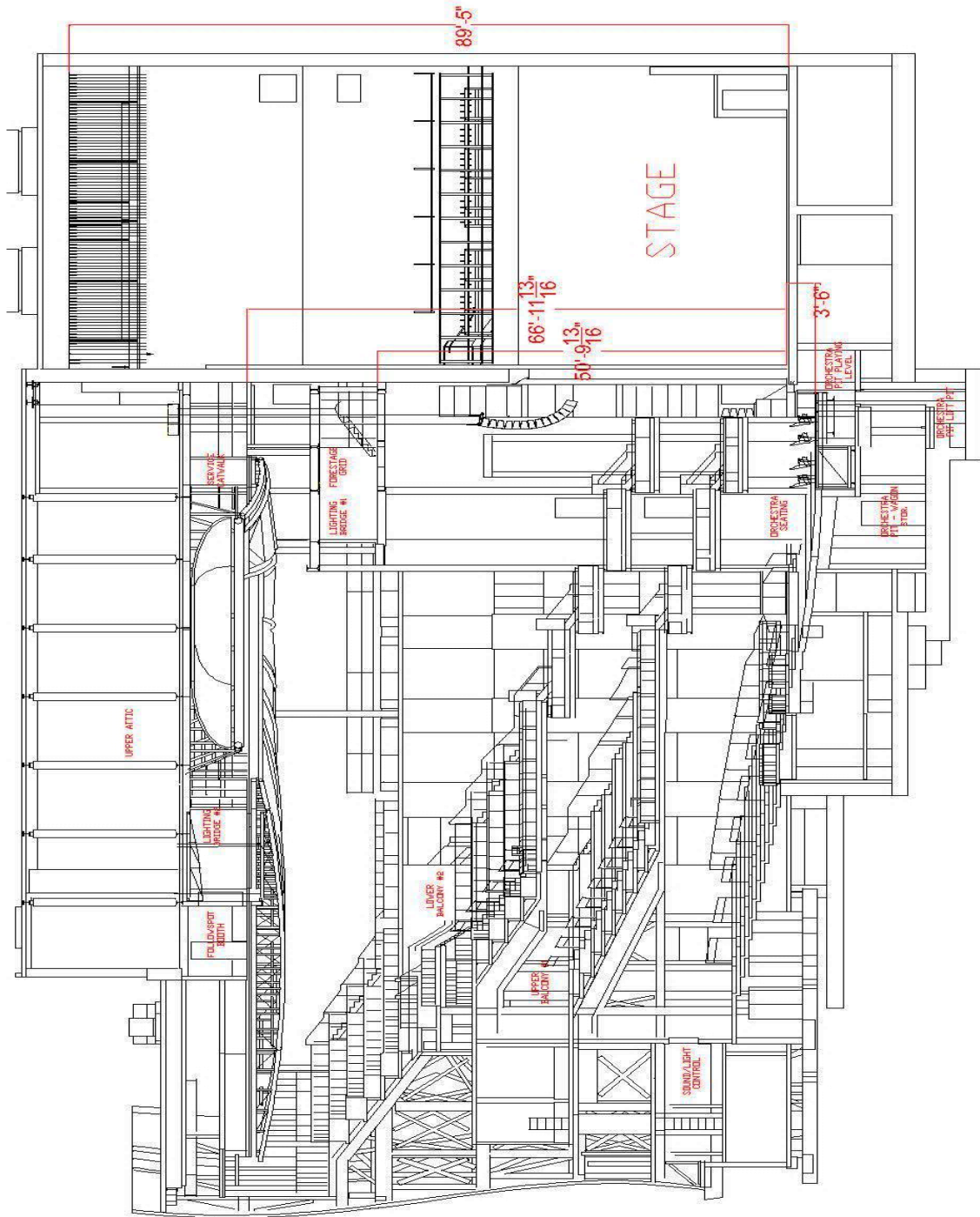
## Orchestra Pit / Stage Thrust

The Orchestra Pit has two pits; Pit 1 is a Serapid-lift, and Pit 2 is not moveable but can have 2 rows of seating added on wagons. The pit can be configured as Full Seating, Half Seating, Stage Level Thrust, Full Pit, or Half Pit. The Pit under hang is 5'.

### Thrust Configurations

<b>APRON</b> (from Plaster Line)	4' 1"
(from House Curtain)	6' 4"
<b>LARGE EXTENSION</b> (from Plaster Line)	19' 10"
(from House Curtain)	22' 4"
<b>HEIGHT OF STAGE</b> (Seating level to stage level)	3' 8"
<b>FULL PIT Opening</b> (Stage Edge to DS Pit Wall)	16' d
Overall Dimensions (including Pit Under-Hang)	21' 6" x 53' 6"
Approximate Capacity of Musicians	55 Musicians
<b>HALF PIT Opening</b> (Stage Edge to DS Pit Wall)	9' d
Overall Dimensions (including Pit Under-Hang)	14' 6" x 43'
Approximate Capacity of Musicians	30 Musicians
<b>HEIGHT OF PIT</b> (Pit Level to Stage Level)	8' 6"

# Walt Disney Theater



## Rigging Specifications

Counterweight System is a single purchase under-hung with 90 hand operated line sets and two operating positions available. One position is located on Stage Level and the second position is located 36' above the stage left deck.

The Grid is walkable on Gridiron Channel Deck; wells are located at 0', and 10', 20', and 30' left and right of center.

Number of Available Line Sets: 90-line sets at 6" on center (see line set schedule)

Grid Height	81' to underside
Travel Distance	75' (from 4' pipe in position)
Max Live Load Weight	2,000 lbs.
Total Weight Available	88,500 lbs.
Length of Battens	66' (extensions available)
1 Ton, 16 FPM Chain Motors	8
½ Ton, 32 FPM Chain Motors	8

### Obstacles

- Line set #3 is the motorized house curtain and operates of 360 feet per minute, minimum 10 feet per minute. The curtain is in two halves with a three foot overlap. It is located 2' 6" upstage from the plaster line. The House Curtain is permanent and cannot be removed or transferred to a different position.

### Soft Goods Inventory

Description	Unit	Height	Width
House Curtain	1	36'	65'
Borders	6	15'	66'
Legs (Sets L&R)	6	34'	14'
Split Black Drape (100% Fullness)	2	34'	35'
Scrim (Black Sharkstooth)	1	34'	66'
White Seamless Cyc (White Leno Filled)	1	38'	66'
Flat Panels	1	30'	50'
Side Tabs	12	34'	5'
Side Tabs	6	34'	9'



## Line Schedule

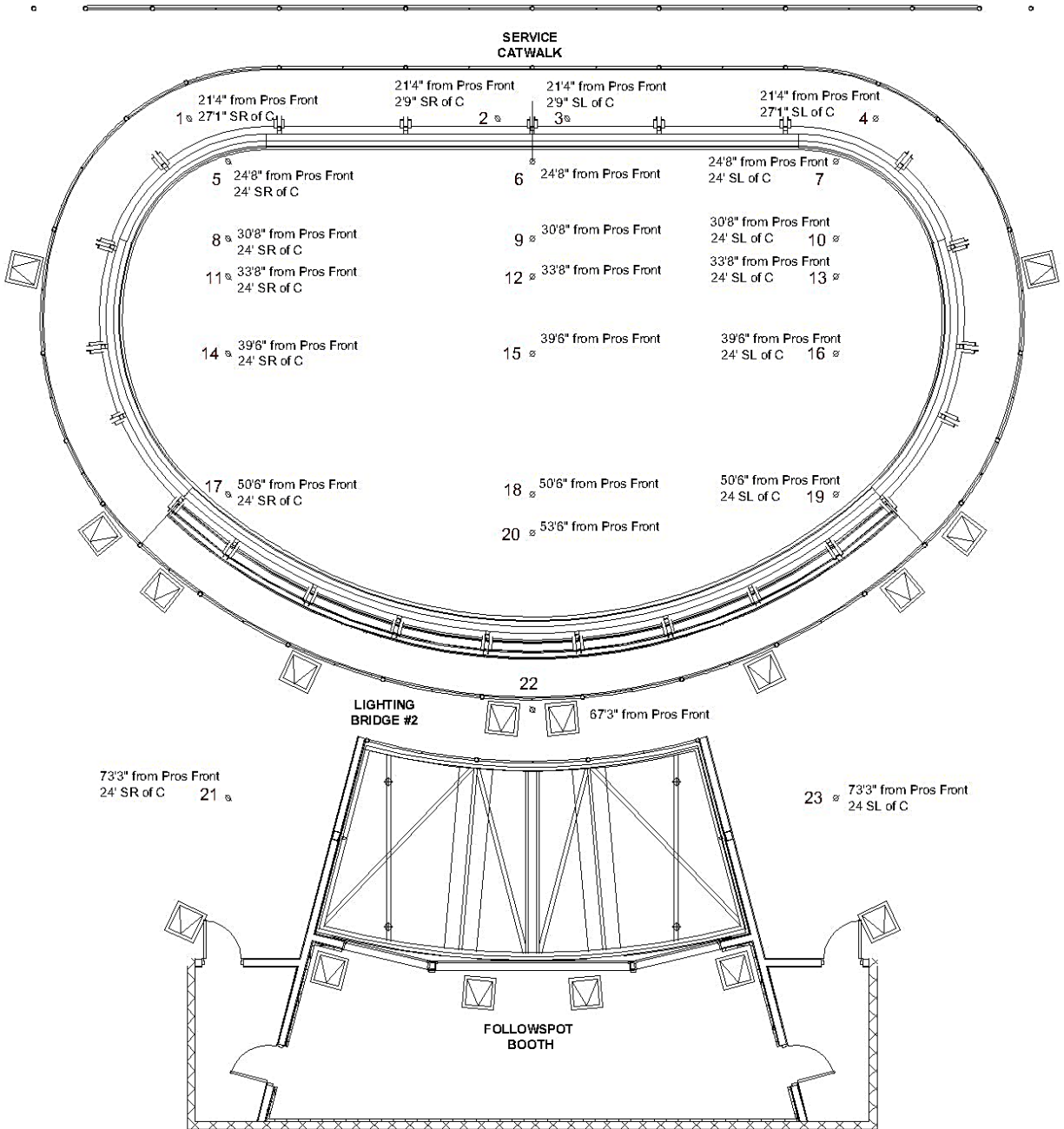
Line #	Position	House Hang	Notes	Weight
All Dimensions Below are Taken from the Plaster Line				
1	1' 1"	Masking (Border)		
2	1' 7"	Masking (Legs)		
3	2' 6"	Main Curtain (Royal Blue)	Permanent/ Automated/Guillotine only	
4	3' 4"		Can foul with the Main	
5	3' 10"			
6	4' 4"			
Spreader Gap				
7	5' 4"			
8	5' 10"			
9	6' 4"			
10	6' 10"			
11	7' 4"			
12	7' 10"			
13	8' 4"	Border #1		
14	8' 10"	SL Leg #1		
15	9' 4"	SR Leg #1		
16	9' 10"			
17	10' 4"			
18	10' 10"			
19	11' 4"			
20	11' 10"			
21	12' 4"			
22	12' 10"			
23	13' 4"			
24	13' 10"			
25	14' 4"			
Spreader Gap				
26	15' 4"	Border #2		
27	15' 10"	Legs #2		
28	16' 4"			
29	16' 10"			
30	17' 4"			
31	17' 10"			

Line #	Position	House Hang	Notes	Weight
32	18' 4"			
33	18' 10"			
34	19' 4"			
35	19' 10"			
36	20' 4"			
37	20' 10"			
38	21' 4"			
39	21' 10"	Border #3		
40	22' 4"	Legs #3		
41	22' 10"			
42	23' 4"			
43	23' 10"			
44	24' 4"			
Spreader Gap				
45	25' 4"			
46	25' 10"			
47	26' 4"			
48	26' 10"			
49	27' 4"			
50	27' 10"			
51	28' 4"			
52	28' 10"			
53	29' 4"			
54	29' 10"			
55	30' 4"			
56	30' 10"			
57	31' 4"			
58	31' 10"			
59	32' 4"			
60	32' 10"			
61	33' 4"			
62	33' 10"			
63	34' 4"			
Spreader Gap				
64	35' 4"			

**Line #                      Position                      House Hang                      Notes                      Weight**

65	35' 10"	Border #5		
66	36' 4"	Legs #5		
67	36' 10"			
68	37' 4"			
69	37' 10"			
70	38' 4"			
71	38' 10"			
72	39' 4"			
73	39' 10"			
74	40' 4"			
75	40' 10"			
76	41' 4"			
77	41' 10"			
78	42' 4"			
79	42' 10"			
80	43' 4"			
81	43' 10"			
82	44' 4"			
Spreader Gap				
83	45' 4"			
84	45' 10"			
85	46' 4"			
86	46' 10"			
87	47' 4"			
88	47' 10"			
89	48' 4"			
90	48' 10"	Full Stage Blackout w/Fullness		
91	49' 4"	Cue Light Cable Cross-Over	House Power for Cue Lights	

# Over House Rigging Access Holes From Above Ceiling



# Sound and Communications

## Speaker Configuration

The Walt Disney has a D&B Q - Series line array system, three flown arrays Left/ Right/ Center. D&B E6 delay speakers provide fill for seating located under the Mezzanine and Balcony overhangs. The front fills service the first few rows of seating in the lower orchestra and are housed in a continuous cavity along the front of the stage.

**Main Arrays:** The primary speaker system consists of three D&B Audiotechnik line arrays. The Center has thirteen QI speakers and one Q7 speaker, flown center of the proscenium opening and the sideline arrays have ten QI speakers each flown left and right in front of the proscenium 28 feet from the center line.

**Sub Configuration:** Sub-woofers consisting of D&B Audiotechnik B2 speakers are grounded stacked (two per side).

**Patching:** All systems are available for individual discrete patching at mix positions as well as DSL and DSR patch points.

**Audio Power:** Audio Power for the Walt Disney Theater is provided through a K -13 transformer delivering clean isolated power to all audio and video locations throughout the theater. The following locations are available company tie ins.

- 200 amp 3 phase company switch at DSL
- Four 20 amp receptables available DSR, DSL, USL, and USR

## Sound Mix Positions

There are two mixing positions available. Please discuss all seat holds for mixing positions with Production or Event Staff prior to tickets going on sale.

- **IN FRONT OF SOUND BOOTH:** Located in the rear of the orchestra level approximately 98' from stage and is 10' d and up to 12' w. The Cable run is approximately 250'.
- **ALT MIX - SOUND MIX LOCATION:** Located in the rear of the orchestra level approximately 112' from the stage. This position is in a sound booth under a balcony that has a window that can open and is approximately 19'd x 27'w (located behind rows ZZ, seats 101-127 on seating map). The Cable Run is approximately 250'.

**Front of House Console**

X-SD10-W-WS-OP	DiGiCo SD 10 Control Surface – MADI & Multi-Mode Optics ST. Connections: MADI x 2, Optics x 1, Internal Waves Card Connectors: BNC, HMA Optical
X-WAVES-SD10	DiGiCo SD 12-96 SD -Waves Card (Internal SD Waves Card. Factory Fit)
X-WAVES-HORIZON	Waves Horizon Bundle License
MGB-P	DiGiCo DiGi-Grid MGB 112/128 Ch @48kHz
SD Rack	2 DiGiCo SD Racks - MADI & Multi-Mode Optics ST. Connections: MADI x 2, Optics x 1 Connectors: BNC, HMA Optical Both have 56 inputs, 1 has 16 Analog outputs, the other has 8 Analog Outputs

**Monitor Console / Stage Monitors / Side Fills**

One 56-Channel Analog Split with 3 available 56-Channel Fan Outs			
8	Meyer UM100	Monitors	15" Self-Powered Monitor Wedge
2	Meyer UPQ	Side Fills	Self-Powered, Two-Way loudspeaker

**Recording / Playback / Effects**

1	Marantz	PMD570 Compact Flash Player
1	Tascam	CD01UPRO CD player
1	Apple	Mac Mini with Q-Lab

## Microphones

3	ADK	S51 Large Diaphragm Condenser
2	AKG	C414 Large Diaphragm Condenser
2	AKG	535B Condenser Vocal Microphone
1	AKG	D112 Kick Drum Microphone
1	CAD	GXL2200 Large Diaphragm Condenser
2	Crown	PZM Boundary Mic
3	Crown	GLM100 Miniature Electret Condenser Microphone
4	DPA	4011A Cardioid Small Diaphragm Condenser
4	DPA	4006A Omnidirectional Small Diaphragm Condenser
2	DPA	4099 Instrument Mic with Piano Magnet Mount
1	Electrovoice	635A35
1	Electrovoice	EVC090
1	Electrovoice	US690 Console Mount Mic
2	Neewer	NW700 Large Diaphragm Condenser
6	Sennheiser	MD421
4	Sennheiser	E835 Vocal Microphones
7	Shure	Beta 58A
10	Shure	SM57
15	Shure	SM58
2	Shure	SM61
7	Shure	SM81
2	Sterling Audio	S50

## Wireless Mic System

4	Shure	AD4D Axient Digital 2 Channel Mic Receivers
8	Shure	AD1 = G57 WLX Mic Transmitter
8	Shure	AD2 / K8: G57 Handheld Transmitter, Beta 87 Capsule
8	Shure	WL 185 Lavalier Microphones for AD1 Transmitter

## Direct Boxes / Interface

6	BSS	AR-133 Active DI Box
2	Countryman	FET85 Passive DI Box
2	Radial	Pro D1 Passive DI Box
4	Radial	ProD2 Stereo Passive DI Box

### Backstage Communications

1	Clear Com	PS-704 four channel power supply
1	Clear Com	RM-704 four channel remote rack station
20	Clear Com	RS-601 wired belt pack (single channel)
8	Clear Com	RS-602 wired belt pack (two channels)
8	Clear Com	KB-702 Speaker Station
20	Clear Com	CC - 95 Single - Muff Headset
8	Clear Com	CC -25 Single - Muff Lightweight Headset
8	Clear Com	HS-6 Handset
1	Clear Com	Tempest Wireless Base Station
3	Clear Com	4 Channel Wireless Belt Packs

### Radio Channels Frequencies

Channel 1	476.375 MHz
Channel 2	476.850 MHz
Channel 3	479.450 MHz
Channel 4	479.900 MHz
Channel 5	477.200 MHz
Channel 6	477.200 MHz
Channel 7	478.400 MHz
Channel 8	478.950 MHz



## Lighting Information

### Control

1	ETC Eos Console 2 Monitors
1	ETC Gio@5 Console
690	ETC Sensor Dimmers

### Front of House Transfer Panel

TBD	DMX in transfer available through board
-----	---

### Followspots

3	Lycian 1295 3K follow spots located in spot booth 113' from stage at a 38 deg. angle
---	--

### Power Distribution

4	400 Amp disconnect S/R Upper Rail
1	400 Amp disconnect S/R/US Wall Stage Level
2	200 Amp disconnects: (1) - DSR, (1) - USL
2	400 Amp Shore Power Panel (Loading Dock)
3	100 Amp disconnects (Hubble): Grid (USR/USL/DSL)
1	100 Amp disconnects (Hubble): Forestage Grid SL
16	20 amps circuits located on each corner of the stage
2	30 amp circuits available on mezzanine

### Dimensional Information

Plaster line to Mezzanine rail	74' at 12° angle
Plaster line to Spot Booth	113' at 38° angle
Plaster line to Lighting Bridge 1	56' at 69° angle 20' from the stage plaster line Height: 50'
Plaster line to Lighting Bridge 2	96' at 45° angle 69' from stage plaster line Height: 69'
Curtain line to center of Alternate Sound Mixing Position	98'
Curtain line to Lightning Booth	112'

## Walt Disney Theater Lighting Equipment

Equipment Inventory	Fixtures Installed in FOH and Onstage Mobile Booms	Fixtures Available for Onstage Lighting Plot
5 degree Source Four Ellipsoidal Spots	3	
10 degree Source Four Ellipsoidal Spots	44	12
14 degree Source Four Ellipsoidal Spots	33	
19 degree Source Four Ellipsoidal Spots	48	19
26 degree Source Four Ellipsoidal Spots	14	40
36 degree Source Four Ellipsoidal Spots	32	40
50 degree Source Four Ellipsoidal Spots	1	20
Rama Selecon 7"7 - 56 degree Fresnel 1000w		35
Arena Selecon 10"8 - 60 degree Fresnel 2000w		20
ETC Source Four PAR		60
PAR 64s (please ask about lamps available)		40
Altman focusing CYC 3 cell units		39
HES SolaFrame Theater		4

Top hats, donuts, barn doors, cable etc. are available for above instruments. Please note that the HES SolaFrame Theater fixtures above may be utilized in their current rep plot positions, but they are not able to be moved to other positions.

In addition to the above fixtures, we have the following fixtures in the building inventory that are moveable around the plot, available at an extra cost, and are subject to availability.

14	HES SolaFrame Theater
24	HES SolaPix 19"

## Dressing Room / Wardrobe / Green Room Information

### Dressing Rooms

All except two single dressing rooms and the two large chorus dressing rooms are located off the green room upstage in the Actors Ally. All rooms are equipped with showers, toilets, mirrors, and chairs. Each dressing room is also equipped with the capability for a hard wired internet. Rooms A & B are the Star/Soloist dressing rooms and are located stage left outside of the theater. The two large chorus dressing rooms are located on the next floor down under the stage. See the dressing room maps on the following pages for locations.

Dressing Room	Number of People	Dimensions
<b>Stage Level</b>		
Room A Star D/R	1 person	10'W x 20'L
Room B Star D/R	1 person	10'W x 17' 6"L
Room C	3-4 persons	9'W x 9' 7"L
Room D	3-4 persons	7' 3"W x 10' 7"L
Room E	10-12 persons	14' 6"W x 22'L
Room F	10-12 persons	10'W x 11' 4"L
Room G	3-4 persons	10'W x 11' 4"L
Room H	3-4 persons	18'W x 19' 5"L
<b>Basement Level</b>		
Room Chorus B1	18-20 persons	23' 10" W x 28'L
Room Chorus B2	18-20 persons	11'W x 33'L
Room Chorus B3	10-12 persons	17'W x 23'L

### Wardrobe Room

There is a dedicated Wardrobe room located at the Dr. Phillips Center for minor repairs.

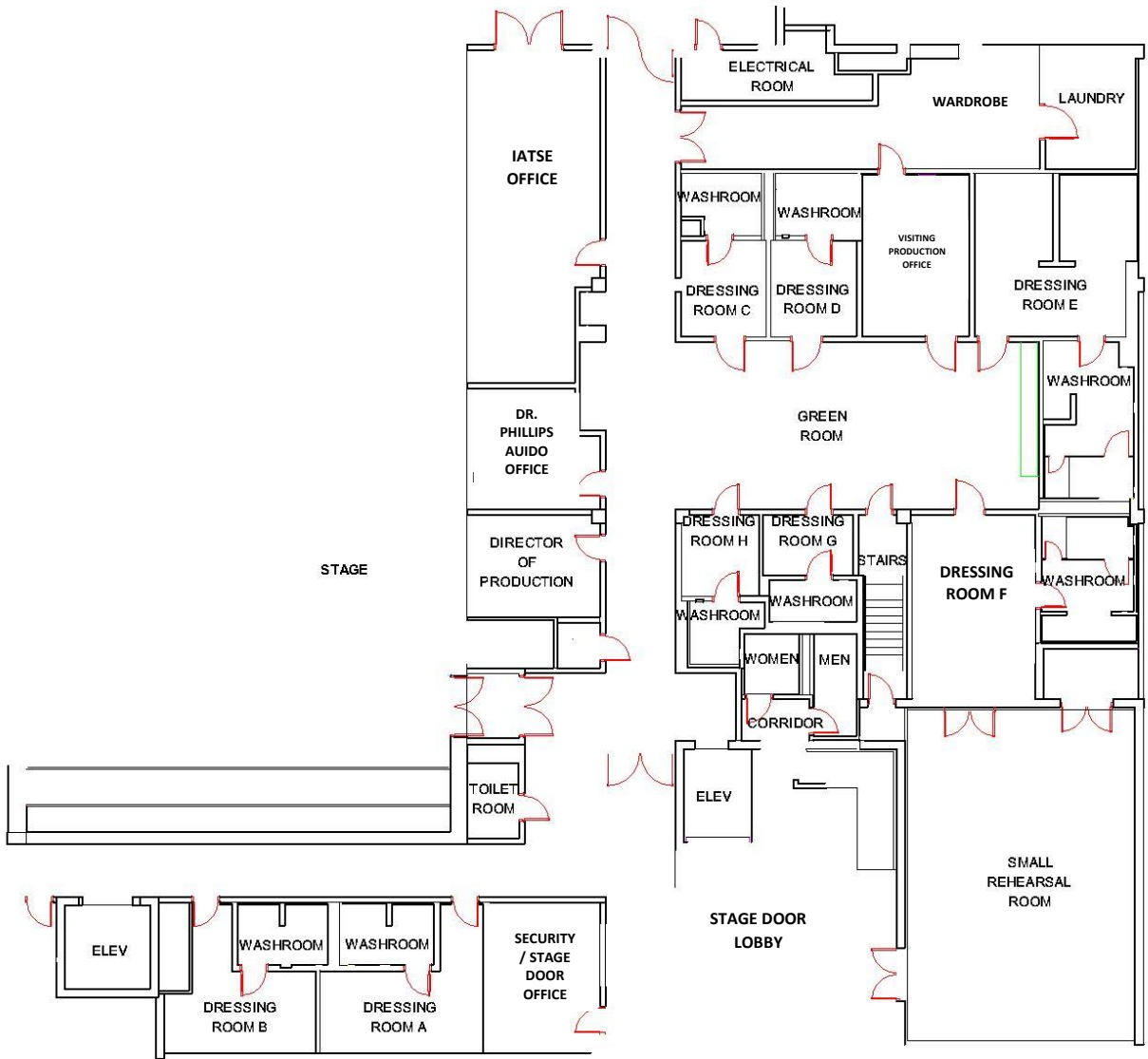
### Laundry Room

The center has one laundry room to facilitate both theaters. It is located onstage level adjacent to the dressing rooms. Three washers and three dryers are on hand as well as a double sink.

### Green Room / Performer's Lounge / Catering Room

The Walt Disney Theater Green room is located on stage level and measures 43' 6" x 20' and holds a small kitchen area with a microwave, coffee maker, sink, and refrigerator.

# 1st Floor Backstage Map of the Walt Disney Theater



Basement Floor Backstage Map of the Walt Disney Theater

