

# TECHNICAL SPECIFICATIONS



dr. phillips center

FOR THE PERFORMING ARTS

## ALEXIS AND JIM PUGH THEATER

Dr. Phillips Center for the Performing Arts

155 East Anderson Street.

Orlando, FL 32801

Main Office (407) 839 0119 (M-F 8:30A-5:30P)

Box Office (844) 513-2014

## Table of Contents

<u>GENERAL CONTACT INFORMATION</u>	<u>3</u>
<u>MAP &amp; DIRECTIONS</u>	<u>4</u>
<u>TRUCK, BUS &amp; VEHICLE PARKING</u>	<u>5</u>
<u>LOADING DOCK INFO</u>	<u>6</u>
<u>SEATING INFORMATION</u>	<u>7</u>
<u>SEATING PLAN</u>	<u>8</u>
<u>STAGE SPECIFICATIONS</u>	<u>11</u>
<u>HOUSE SPECIFICATIONS</u>	<u>12</u>
<u>CENTERLINE SECTION DRAWING</u>	<u>13</u>
<u>RIGGING SPECIFICATIONS / OBSTACLES</u>	<u>14</u>
<u>HANGING PLOT / LINE SCHEDULE</u>	<u>15</u>
<u>RIGGING STEEL AND CATWALKS</u>	<u>16</u>
<u>SOUND AND COMMUNICATIONS</u>	<u>17</u>
<u>AUDIO EQUIPMENT LIST</u>	<u>20</u>
<u>LIGHTING INFORMATION AND EQUIPMENT</u>	<u>21</u>
<u>DRESSING ROOM INFORMATION</u>	<u>22</u>

# Contacts at the Dr. Phillips Center for Performing Arts

## PRODUCTION STAFF

Production Team	<a href="mailto:productionmanagement@drphillipscenter.org">productionmanagement@drphillipscenter.org</a>
-----------------	--

## STAGE LABOR

The Alexis and Jim Pugh Theater is a non-union facility. All shows and events will require at least one house technician to be present when anyone not affiliated with the Dr. Phillips Center for the Performing Arts is present in the theater.

To reduce the risk of injury or damage on stage or off stage, sole operators of the fly system are to be DPC technicians unless instructed otherwise by the managers of the Alexis and Jim Pugh Theater.

## ADDITIONAL CONTACTS

Guest Services Team	<a href="mailto:fohadvance@drphillipscenter.org">fohadvance@drphillipscenter.org</a>
Food and Beverage Team	<a href="mailto:foodbeveragemanagement@dpc.org">foodbeveragemanagement@dpc.org</a>
Security Team	<a href="mailto:security@drphillipscenter.org">security@drphillipscenter.org</a>

## Map and Directions

The Dr. Phillips Center is conveniently located in Downtown Orlando and can be reached by several routes.

**Address**

Stage Door:  
155 East Anderson Street  
Orlando, FL 32801

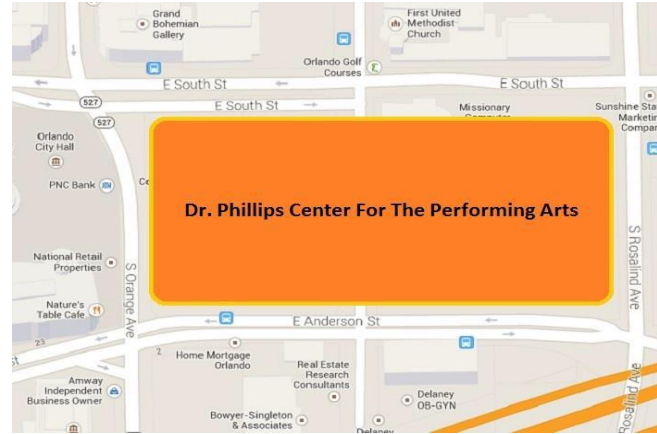
**Driving Directions from I-4:**

**Coming From the West on I-4:**

- Take I-4 East to South Street (Exit 82B)
- (Exit curves right)
- Right onto South Street
- Right onto Orange Avenue

**Coming From the East on I-4:**

- Take I-4 West
- Exit #82C Anderson Street
- Left on Anderson Street
- Left onto S. Rosalind Avenue



**Driving Directions from 408 (East-West Expressway):**

**Coming Eastbound on 408 (East-West Expressway):**

- 408 East to I-4 East – toward Daytona Beach (Exit 10A)
- Take the Anderson Street exit (Exit 82C)

**Coming From the West on 408 (East-West Expressway):**

- 408 West to the Rosalind Avenue exit (Exit 11A)
- Turn Left onto South Street

**Trucks going to Loading Dock:**

From S. Orange Avenue turn Left into E. Anderson Street and then turn second left onto S. Rosalind Avenue. The gate entrance to back-stage lot is on your left. Push the buzzer to contact guard. Identify yourself and a guard will let you enter.

**General Parking Instructions:**

*(If traveling South on S. Orange Ave., Turn Right onto South Street then follow the directions below)*

- Turn Left onto Boone Avenue
- Turn Right into the City Commons Parking garage (across the street from City Hall). This garage charges a fee.

*(If traveling East on South Street, Turn Right into the City Commons Parking Garage just before the South Street / Boone Ave. Intersection)*

**Truck, Bus, and Parking**

Truck and Bus parking on site is limited. Please inquire with DPC Production Manager prior to arrival. There is only parking available directly backstage for 2 production vehicles, however, parking is available for other cars in the parking garages located across the streets from the theatre. All parking arrangements must be discussed with a Production Manager prior to the event for necessary passes and badges.



## Loading Docks

The loading docks are located in the rear of the building off South Rosalind Ave. There are five loading bays. The Loading Docks are 4' high and all have deck levelers. The doors are 8'w x 12'h with 2,668 square feet of receiving area. Doors from receiving area to the stage are 13' W x 16'H. A 50a shore power connection is available at Bay 1 and Bay 5. Only 2 bays may be occupied after load-in, with confirmation during the Advance Call. Every person entering the building via any entrance will be subject to security screening.

The stage access to the Alexis and Jim Pugh Theater is found on the second floor, accessible via our freight elevator.

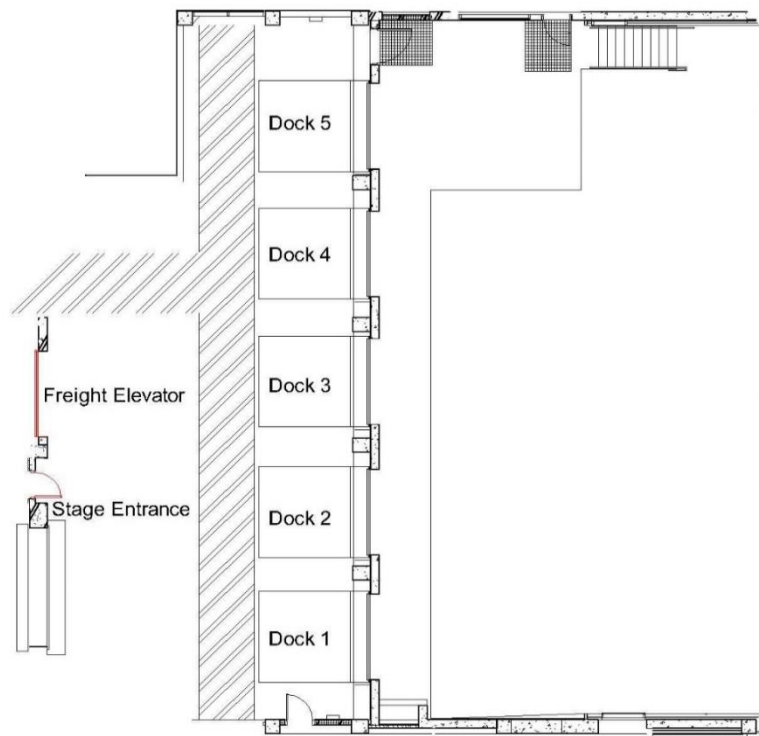
- The elevator door dimensions are 6' 10" w X 10' h, matching the load in entrance for dimension.
- The freight elevator dimensions are: 9' 9" w X 20' d
- The smaller passenger elevator dimensions are: 5' 5" w X 8' 3" d X 9' 6" h (door width is 4' 6")



STEINMETZ  
HALL

Elevator to JIM &  
ALEXIS PUGH  
THEATER

WALT DISNEY  
THEATER



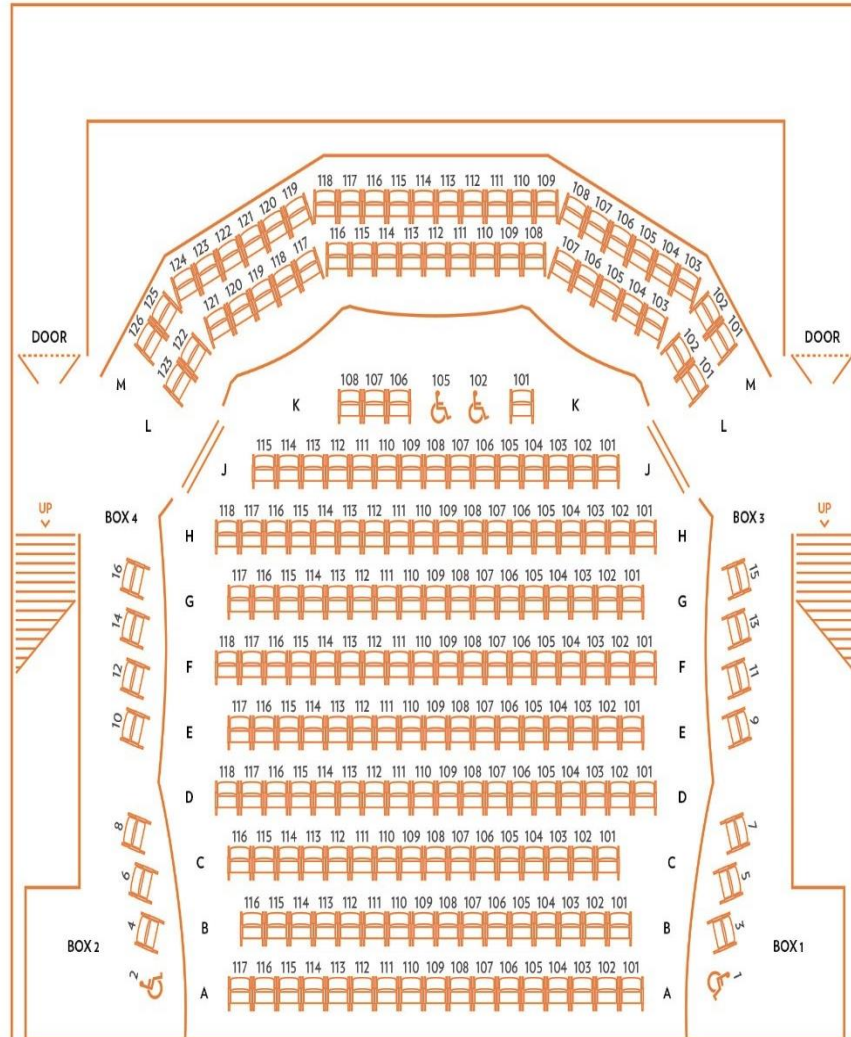
## Seating Information and Capacity

(MAXIMUM Seating Capacity is 294 Seats (See seating map on following pages))

<b>Lower Orchestra Level - 225 Seats Total</b>	
Rows A - M	225 Seats
<b>Upper Balcony Level - 69 Seats Total</b>	
Upper Level Rows A - B	69 Seats
<b>Cabaret Style - 249 Seats Total</b>	
Rows A - M	Seats



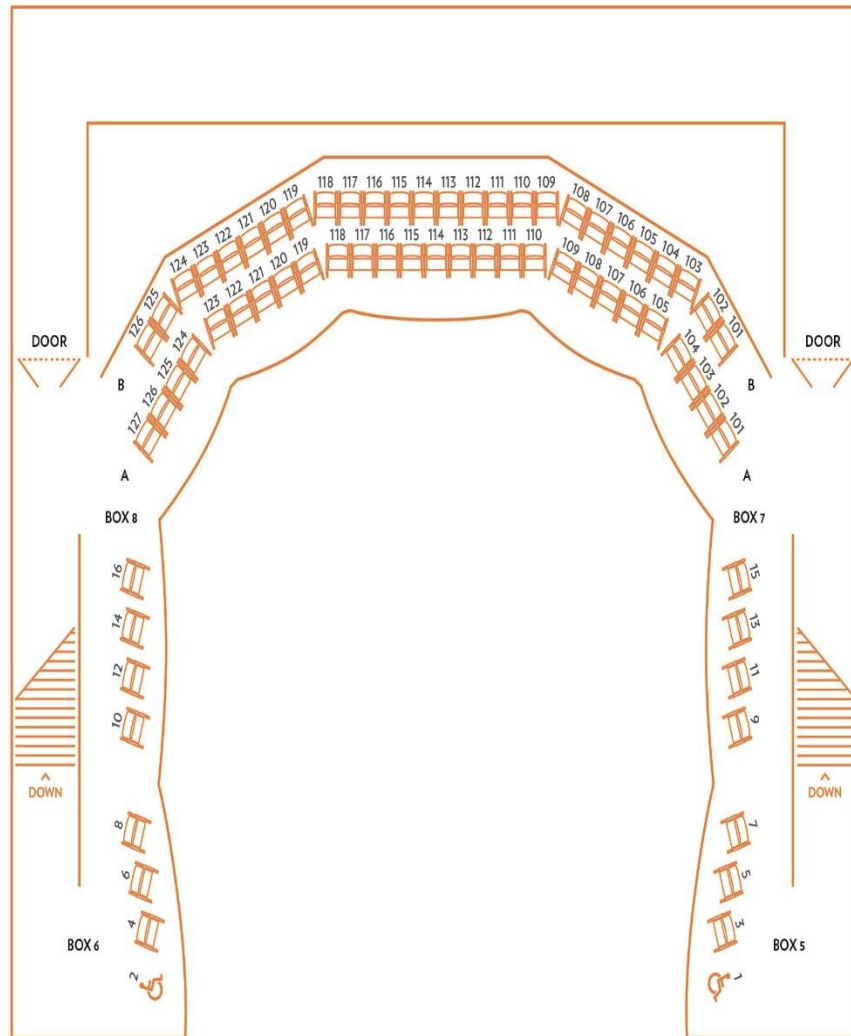
# Seating Plan Standard Layout



225 Seats in Main Level  
 223 Seats in Main Level with Full ADA Usage  
<sup>000</sup>  
 Wheelchair Positions  
 Full Theater Capacity:  
 294 Seats  
 292 Seats with Full ADA Usage

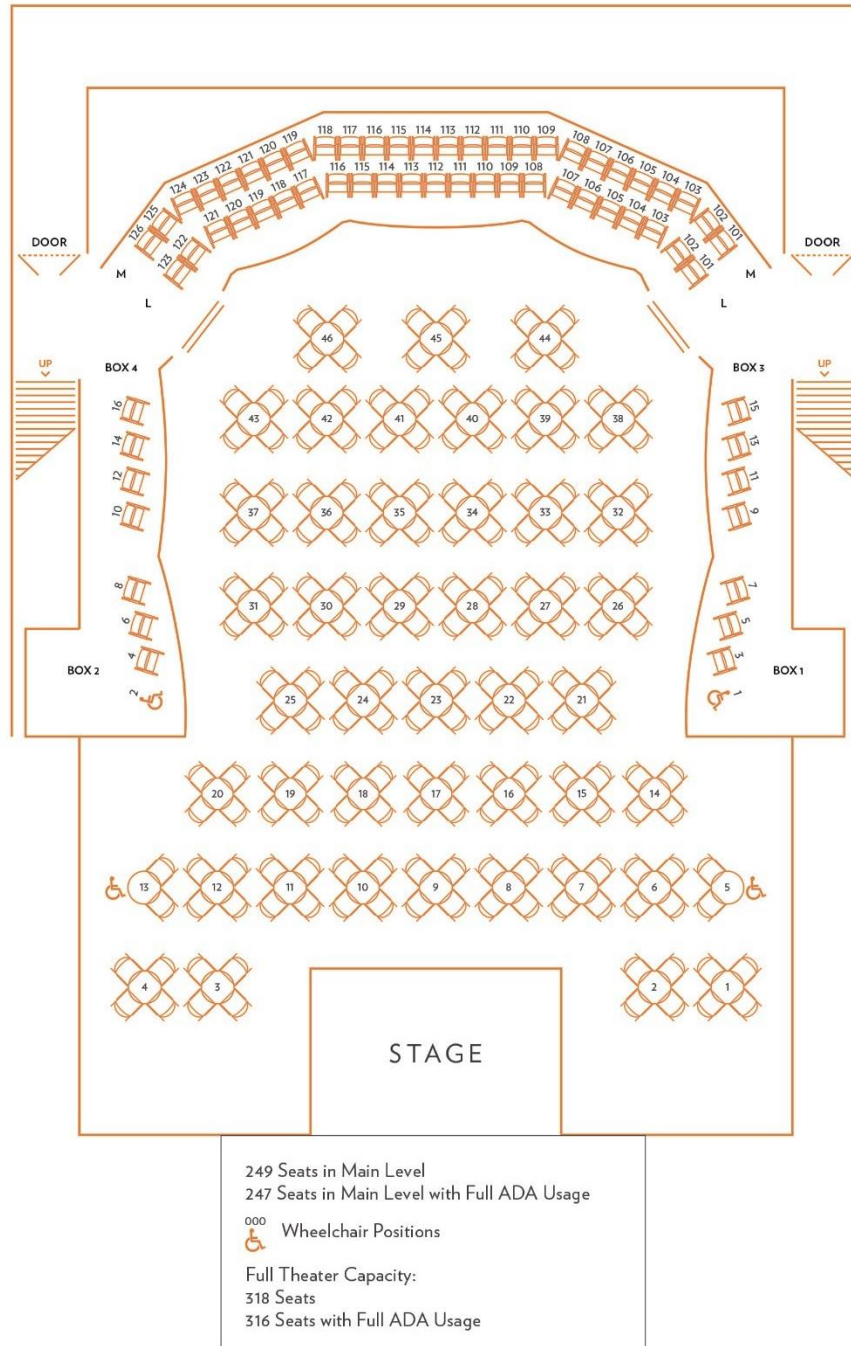


# Seating Plan Balcony Layout



69 Seats in Gallery Level  
000 Wheelchair Positions  
♿

# Seating Plan Cabaret Layout



## Stage Specifications

The Stage Floor is a semi sprung floor with double layer tongue and groove plywood on aluminum sleeper over rubber blocks and finished with black masonite/benelux. The rubber blocks are surrounded by a steel channel which limits over-decompression. Any damage to floor incurred by a production must be restored by the production.

### Stage Floor Configurations

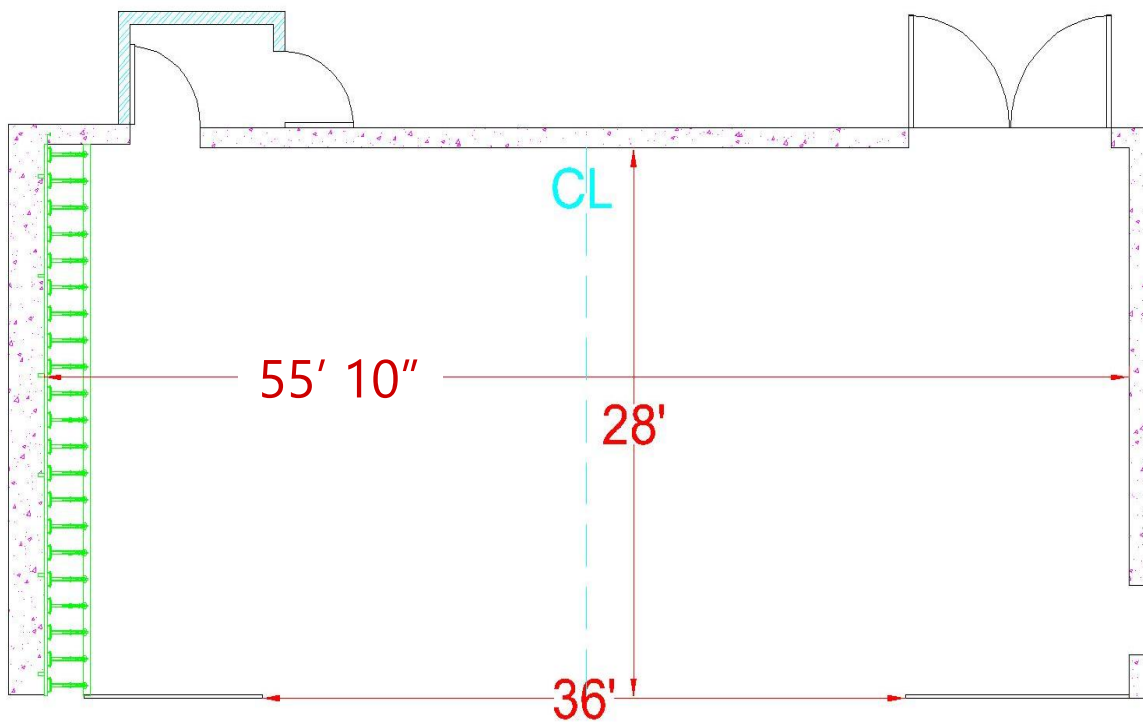
<b>HEIGHT OF GRID UNDERSIDE</b>	36' 4"
<b>HEIGHT OF PROSCENIUM OPENING</b>	17'
<b>WIDTH OF PROSCENIUM OPENING</b>	36'
<b>HEIGHT OF GALLERIES</b>	
Upper Loading Gallery	27' 6"
Operating Gallery/ Pin Rail SR	Stage Floor Level
Clearance to Underside of catwalks	27'
Upstage catwalk	None
<b>DEPTH OF STAGE (from Plaster Line)</b>	27'
<b>WIDTH OF STAGE</b>	55' 10"
Width of Proscenium Opening	36'
Width of Opening of Main Curtain	28' 8"
Flys Lock Rail Working Area SR	4' 2"
Width of stage (center to SR)	26' 10"
Width of stage (center to SL)	29'
<b>CENTER STAGE TO CATWALK SR</b>	24'
<b>CENTER STAGE TO CATWALK SL</b>	24'
<b>MANUAL SIDE MASKING TABS UP TO DOWN</b>	25' 10" off CL

## House Specifications

The Orchestra Floor is a semi sprung floor with double layer tongue and groove plywood on aluminum sleeper over rubber blocks and finished with black masonite/benelux. The Orchestra Floor uses a manual scissor lift system, which configures the room to different seating layouts. (see seating maps on previous pages). Any damage to floor incurred by a production must be restored by the production. Fog, Haze, and Open Flame are not permitted in the theater without permitting and fire watch personnel. Fees Apply. Requests must be made 21 days prior to the first performance.

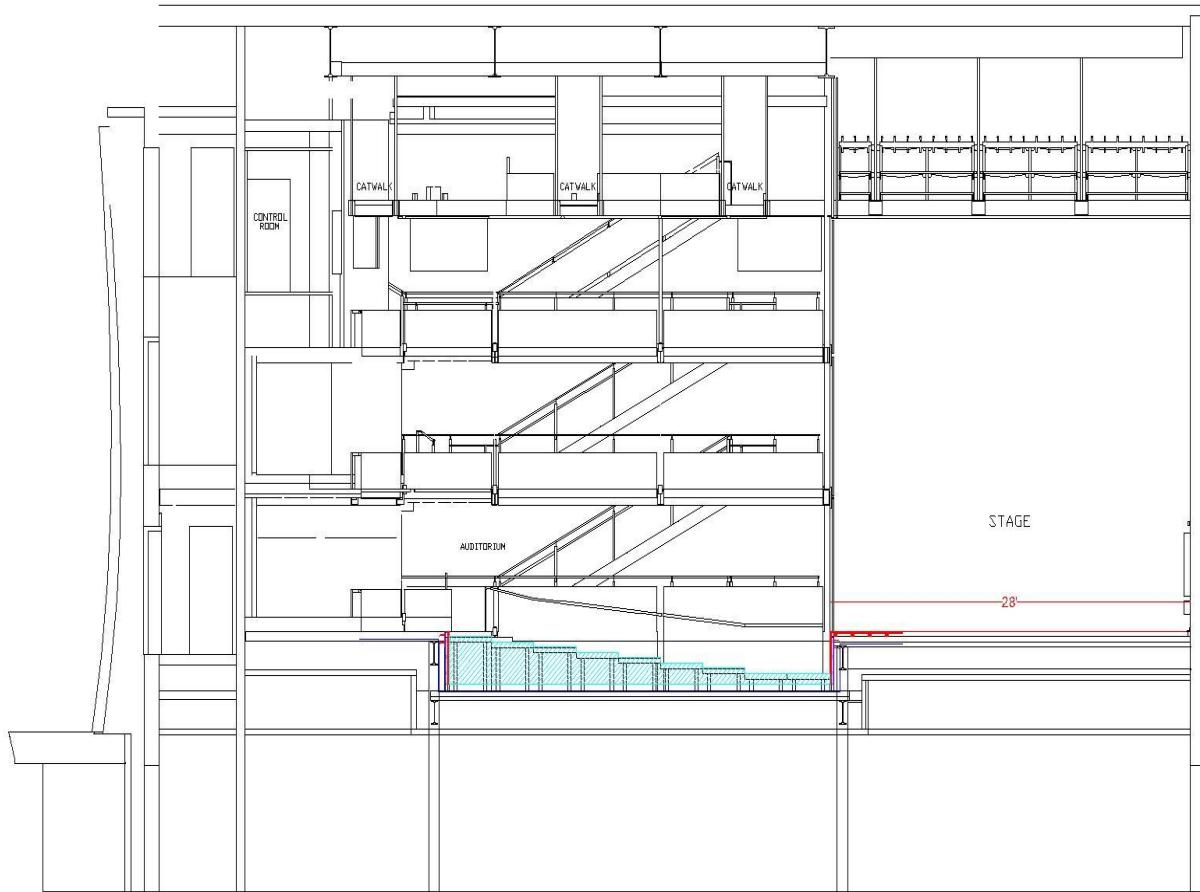
## Stage Area Plan

Alexis & Jim Pugh Theater  
Stage



# Centerline Section

## Alexis & Jim Pugh Theater Centerline Section



## Rigging Specifications

Counterweight System is a single purchase under-hung with 21 hand operated line sets with a stage level operating positions available.

There is no Grid in the Pugh Theater, and all the flying lines are under - hung.

Number of Available Line Sets: 21 line sets 16" on Center.

Grid Height	36' 4" to underside
Travel Distance	30' 4" (from 4' pipe in position)
Max Live Load Weight	1,000 lbs.
Total Weight Available	12,600 lbs.
Length of Battens	40'

### House Curtain

- The Main House Curtain is a split traveler with a three-foot overlap operated from SR. It is located 1' 10" upstage from the plaster line.

### Soft Goods Inventory

Description	Unit	Height	Width
House Curtain (white)	1	28'	45' 8"
Borders	1	10'	40'
Borders	1	8'	40'
Legs (pair)	1	24' 6"	8'
Legs (pair)	2	24' 6"	11'
Split Black Drape	2	24'	43'
White Leno Filled Scrim Cyc	1	30'	40'

## Line Schedule

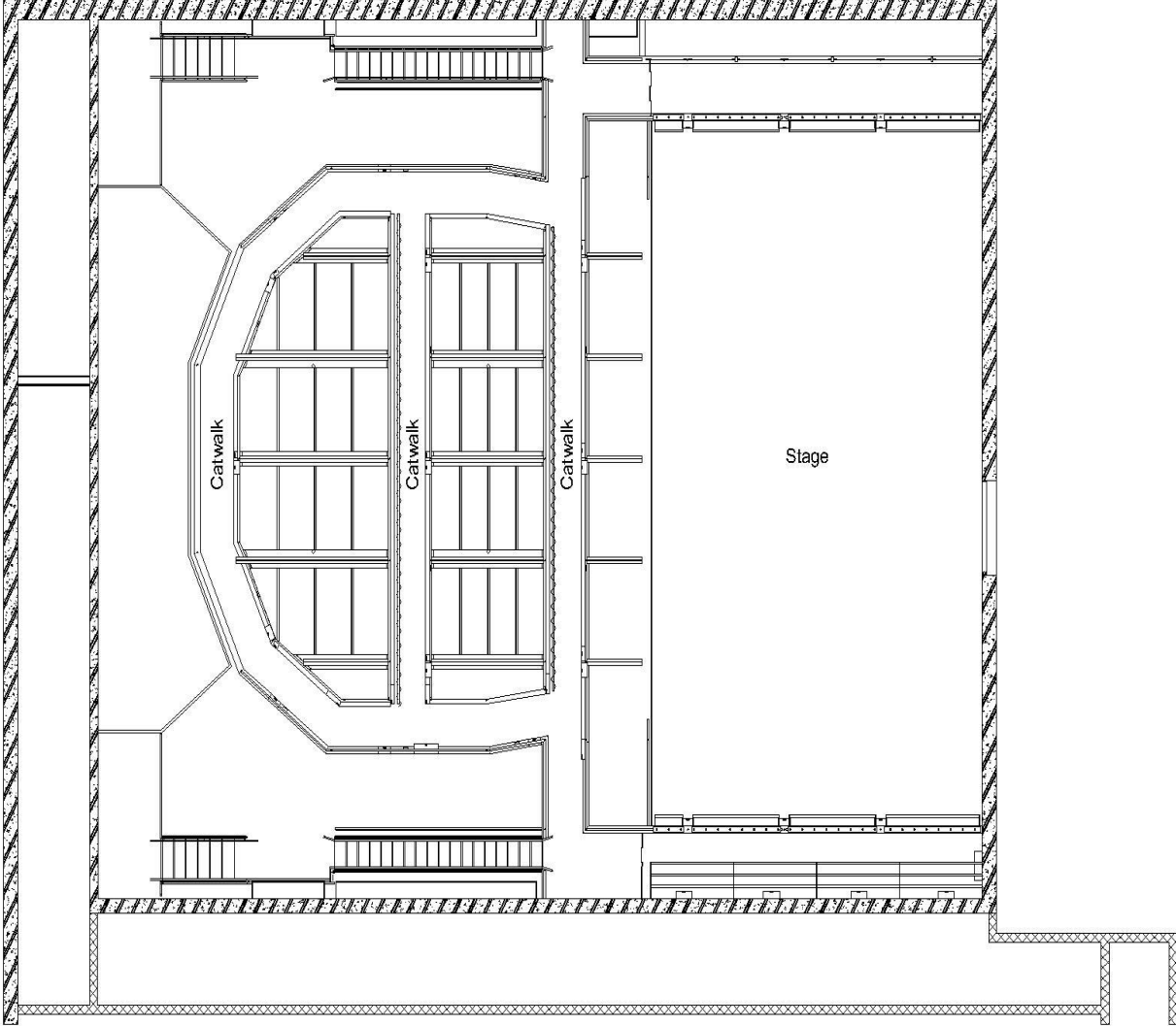
Alexis and Jim Pugh Theater

- 21 Line Sets (single Purchase / Stage Locking Rail)
- No Fire Curtain
- No Grid / Loft Blocks Mounted to I - Beams at 35'h

Line #	Position	House Hang	Weight	Brick #
1	6"	Header	570 lbs	19
2	1' 10"	Main Curtain	750 lbs	25
3	3' 2"	Overhead Stage Monitors	60 lbs	2
4	4' 6"	1st Electric	690 lbs	23
5	5' 10"	LED Lx	180 lbs	6
6	7' 2"	1st Legs	60 lbs	2
7	8' 6"			
8	9' 10"	Border #1	60 lbs	2
9	11' 2"	2nd Legs	60 lbs	2
10	12' 6"	2nd Electric	690 lbs	23
11	13' 10"			
12	15' 2"	Border #2	60 lbs	2
13	16' 6"	Screen	90 lbs	3
14	17' 10"	Mid-Stage Traveler with Track	420 lbs	14
15	19' 2"			
16	20' 6"	Border #3	60 lbs	2
17	21' 10"	3rd Electric	690 lbs	23
18	23' 2"			
19	24' 6"	Cyc Lights	330 lbs	6
20	25' 10"	Upstage Traveler with Track	420 lbs	14
21	27' 2"	Cyclorama	90 lbs	3

Rigging Steel and Catwalks

Alexis & Jim Pugh Theater  
Rigging Steel & Catwalks





## Sound and Communications

### Front of House

The in house audio system consists of left-right speakers each made up of Meyer Sound UPQ-1P loudspeakers, 2 Meyer Sound UPQ-1P loudspeakers and 1 UP Junior loudspeaker to complete the center channel cluster, with Meyer Sound 500-HP subwoofers (stage left and stage right). All Meyer Sound speakers are self-powered through internal amplification, while London BLU series processing handles audio networking for the main system.

The system is also configurable to amplify passive speakers with 16 channels of amplification by 2 QSC CX168 8- channel amplifiers. Inputs are located on all audio patch panels throughout the theater with Speakon connections.

### Front of House Console

- Yamaha CL5

### Mix Position

There are 2 mixing positions available. **All seat holds for mixing positions must be discussed with Programming and Production Staff prior to tickets going on sale.**

- Control Booth – Located in the rear of the 3<sup>rd</sup> level approx. 48’ from the stage.
- House Mix – Located in the rear, orchestra level (underneath first balcony) approx. 41’ from stage. **This mix position requires the removal of 11 seats. Please see image below:**



## **Power**

Audio power for the Pugh Theater is provided through a K-13 transformer delivering clean isolated power to all audio and video locations throughout the theater. Power locations include: all floor pockets, SL, SR, upstage, HL, HR, balcony ceilings, catwalk, and tech booth.

## **Patching**

Individual discrete patching is available in all mix positions as well as DSL and DSR patch points. Analog audio, digital audio, BNC video and Clear-Com party lines are available patches on stage boxes. Main patching is done through a Dante networking system. This is done through the Yamaha Rio 3234 D2 stage rack. There is also a Yamaha Rio 1608 D2 stage rack available for more patch points. The 1608 D2 stage rack has the capability of floating wherever any patch points need to be made.

## **Communication**

Clear Com 4 channel intercom system with wired connections and 5 wireless Tempest 900 belt packs. Wired Coms can be positioned at any audio patch point in the theater, including the control booth, spotlight, amp room, wings (including the fly rail) and stage manager position.

## **Stage Manager Console - Stage Availability**

The console is equipped with rack video monitors that show full view of stage, 4-channel Clear Com station and paging to dressing rooms. A shotgun microphone feeds program audio from the house into dressing rooms speakers to provide monitoring from backstage.

## **Audio Equipment List:**

### **Wireless Microphone System**

1	SHURE UA845UWB Antenna Distribution system
3	SHURE AD4Q Axient Digital 4 Channel Microphone Receiver
1	SHURE AD600 Axient Digital Spectrum Manager
1	SHURE AD610 Showlink Access Point
8	SHURE ADX1:G57 Wireless Belt Pack Transmitter
8	SHURE MX184 Supercardioid Lavalier Microphone
8	SHURE ADX2/K9:G57 Wireless Handheld Transmitter, KSM9 Capsule
2	SHURE SBRC Rackmount Battery Charger Chassis
4	SHURE SBM910 Battery Charger Module: SB910 Battery
4	SHURE SBM920 Battery Charger Module: SB920 Battery
16	SHURE SB910 Belt Pack Rechargeable Battery
16	SHURE SB910 Handheld Rechargeable Battery
2	SHURE PA805SWB Passive Antenna (470-952MHZ)

### **Additional Microphones Available**

2	AKG C414 XLS
1	AKG D112
6	CROWN PCC-160
2	DPA 4006 ***
2	DPA 4011 ***
2	DPA 4021
2	EARTHWORKS SR77
11	SHURE SM57
10	SHURE SM58
13	SHURE BETA 58A
1	SHURE SM63
1	SHURE 55sh
6	SENNHEISER MD421 11

### **DI**

2	RADIAL PRO D2 STERO DI
1	WHIRLWIND PCDI
2	COUNTRYMAN FET85
3	BSS AR-133 ACTIVE DI

### **Additional Items Available**

2	Anchor Audio 2-way speaker monitors
2	Tascam CD500B CD players
1	Tascam SS CDR200 CD player/burner
2	8 Ch. Sub Snake
1	8 Ch. In 4 Ch. Out Sub Snake

## Lighting Information

Alexis and Jim Pugh theater is a fully LED lit theater that contains a lighting rig that can light up any type of show that comes into the space, the room contains the fixtures below and does not have any loose inventory. Any additions will require a rental, and any adjustments may require a lighting call. Our Lighting Plot is also available upon request.

### Control

1	ETC Eos TI Console
1	ETC ION Classic
288	ETC Sensor Dimmers

### Followspots

2	Robe T11 Profiles with Follow Spot Handles located on 3 <sup>rd</sup> level on either side of the booth
---	---

### Alexis and Jim Pugh Theater Lighting Equipment

30	ETC ColorSource Par Deep Blue
12	HES Lonestar
Upper Cyc	ETC ColorSource Cyc
Lower Cyc	ETC ColorSource Linear Deep Blue
6	50 degree ETC Lustr 3 w/XDLT barrel
20	36 degree ETC Lustr 3 w/XDLT barrel
22	26 degree ETC Lustr 3 w/XDLT barrel
8	19 degree ETC Lustr 3 w/XDLT barrel

In addition to the above fixtures, we have the following fixtures in the building inventory that are moveable around the plot, available at an extra cost, and are subject to availability.

14	HES SolaFrame Theater
24	HES SolaPix 19"

### Dimensional Information

Plaster line to 2 <sup>nd</sup> Tier Rail	35' at 19° angle
Plaster line to Catwalk 1	28' at 79° angle
Plaster line to Catwalk 2	33' at 56° angle
Plaster line to Catwalk 3	43' at 37° angle
Curtain line to center of Alternate Sound Mixing Position	41'
Curtain line to Lightning Booth	48'

# Dressing Room / Wardrobe / Green Room Information

## Dressing Rooms

There are two key code lock Dressing Rooms available for the Pugh Theater unless alternative arrangements are made with Production to utilize the Walt Disney Theater Dressing Rooms, which are subject to availability.

## Dressing Room Plan

Dressing Room	Number of People	Dimensions
Room Pugh 1	6 persons	10'W x 20'L
Room Pugh 2	6 persons	10'W x 17' 6"L

